

# Knowledgebase Article

---

## Run a program under Administrator privilege

© Copyright 2001-2012 EMCO Software

## Run a program under Administrator privilege

In this tutorial we will show you how to execute a program under another user rights to gain more access if you don't have it from your current user logon.

Some of our programs require Administrator rights to the remote computer to perform correctly, and the most common support questions we get are because the user that is using our product's does not have the required privilege needed for the program to perform the way it should be!.

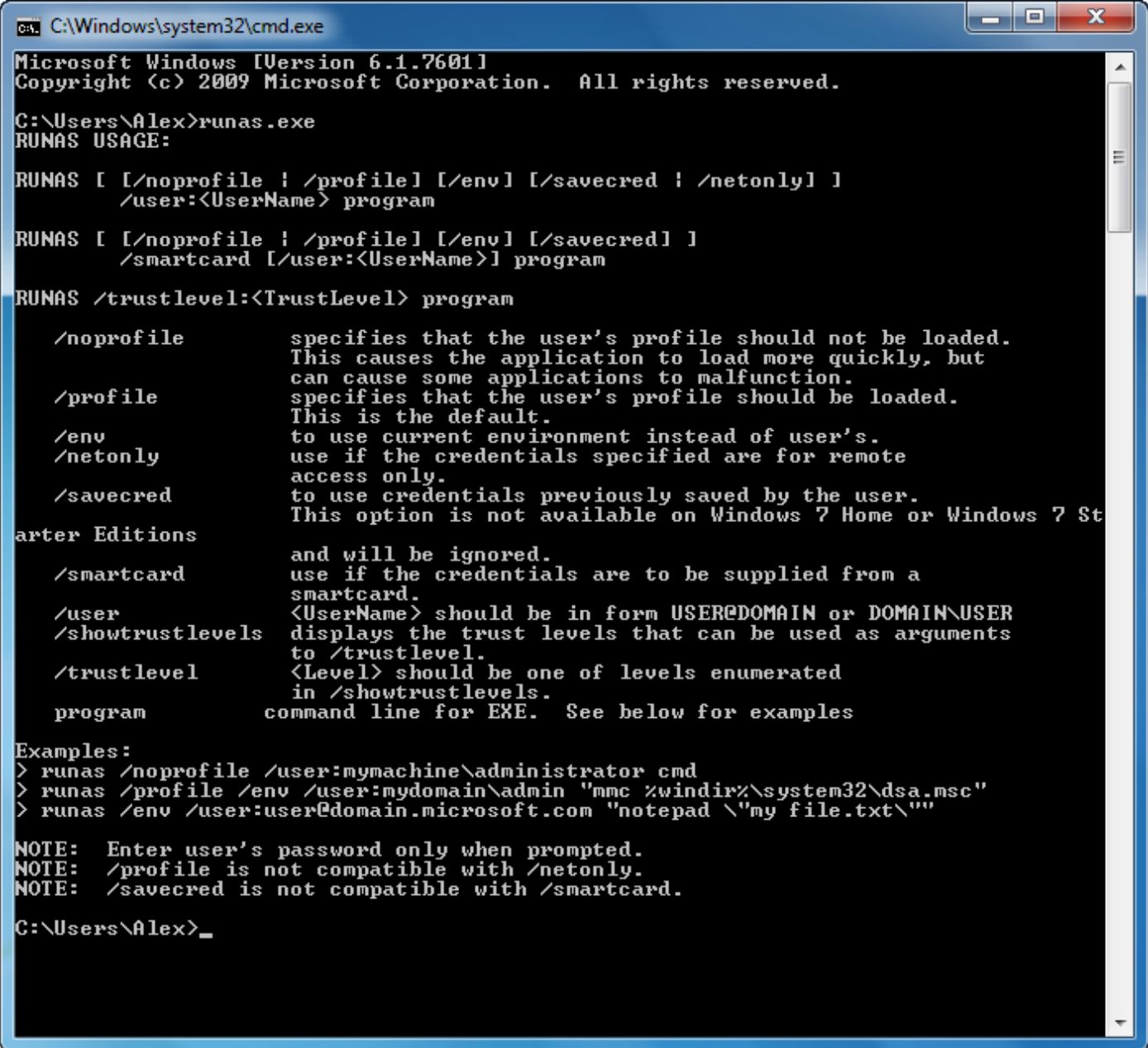
### **About the RunAs feature**

The RunAs feature allows you to run any program under another user account rights. Think about it... if you are not a full member of the Administrator group on the computer you are logged into and have a need to run a program as the administrator user you can use the RunAs feature any time you want. But of course you need to know the password for the administrator or the user you want to use for the RunAs function.

There are many ways to use and access the RunAs feature, and we will write about two of them here in this short tutorial.

## Using RunAs from the command line, Cmd.exe

From the screenshot below you can see how we access this feature easily by writing just the RunAs.exe as the filename into the Cmd.exe dialog.



```
C:\Windows\system32\cmd.exe
Microsoft Windows [Version 6.1.7601]
Copyright (c) 2009 Microsoft Corporation. All rights reserved.

C:\Users\Alex>runas.exe
RUNAS USAGE:

RUNAS [ [/noprofile | /profile] [/env] [/savecred | /netonly] ]
        /user:<UserName> program

RUNAS [ [/noprofile | /profile] [/env] [/savecred] ]
        /smartcard [/user:<UserName>] program

RUNAS /trustlevel:<TrustLevel> program

        /noprofile           specifies that the user's profile should not be loaded.
                           This causes the application to load more quickly, but
                           can cause some applications to malfunction.
        /profile             specifies that the user's profile should be loaded.
                           This is the default.
        /env                 to use current environment instead of user's.
        /netonly             use if the credentials specified are for remote
                           access only.
        /savecred            to use credentials previously saved by the user.
                           This option is not available on Windows 7 Home or Windows 7 St
arter Editions
        /smartcard           and will be ignored.
                           use if the credentials are to be supplied from a
                           smartcard.
        /user                <UserName> should be in form USER@DOMAIN or DOMAIN\USER
        /showtrustlevels     displays the trust levels that can be used as arguments
                           to /trustlevel.
        /trustlevel          <Level> should be one of levels enumerated
                           in /showtrustlevels.
        program              command line for EXE. See below for examples

Examples:
> runas /noprofile /user:mymachine\administrator cmd
> runas /profile /env /user:mydomain\admin "mmc %windir%\system32\dsa.msc"
> runas /env /user:user@domain.microsoft.com "notepad \"my file.txt\"

NOTE: Enter user's password only when prompted.
NOTE: /profile is not compatible with /netonly.
NOTE: /savecred is not compatible with /smartcard.

C:\Users\Alex>_
```

All about the RunAs command from Microsoft web site.

<http://technet.microsoft.com/en-us/library/bb490994.aspx>

Another good reference site about Commands from Microsoft.

### Command-line reference A-Z

<http://technet.microsoft.com/en-us/library/bb490890.aspx>

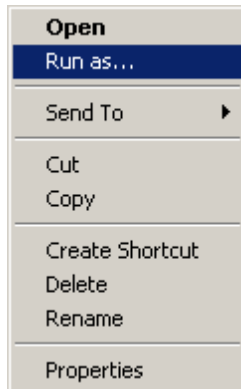
Good hint if you need to run it from a logonscript or just from any remote cmdline utility on the market today that can execute programs remotely.

```
%systemroot%\system32\runas.exe
```

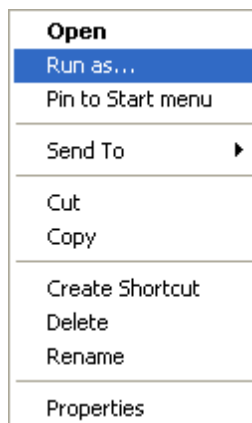
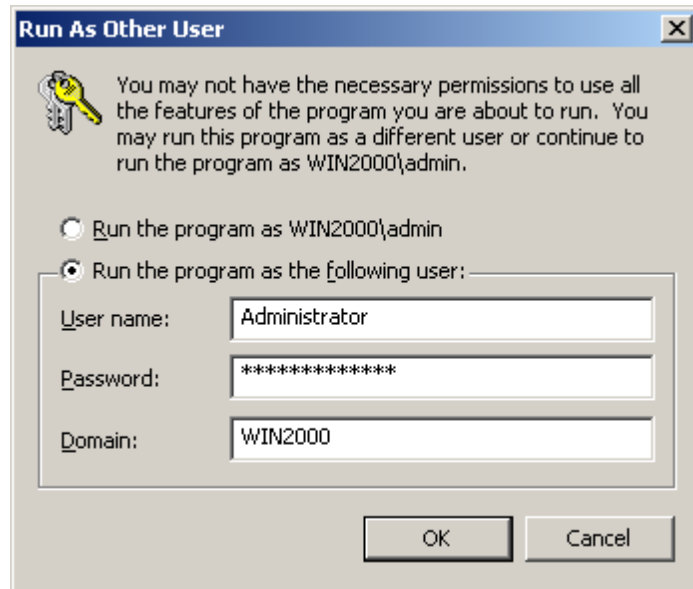
## Using RunAs from right click on a program .exe file

The most used method and easiest to use is, execute the RunAs command by right click on a program file by holding down the SHIFT key and select RunAs menu item. After the click you will get a dialog that popup where you can enter your user info.

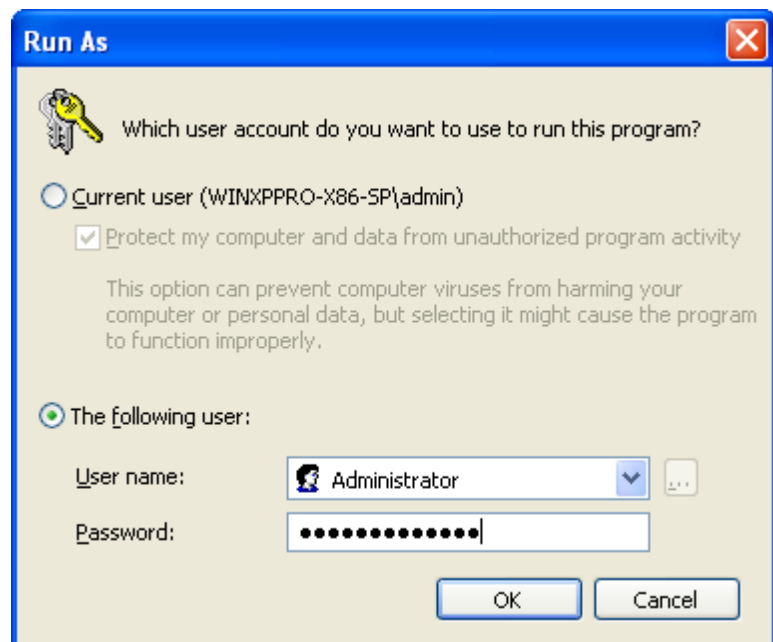
Screenshot of the **Run As** dialog

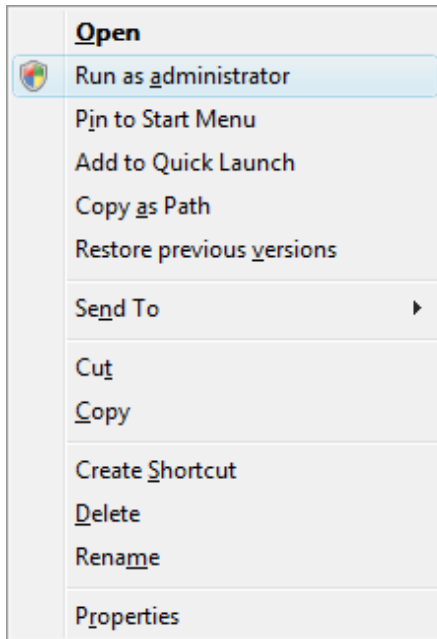


2000

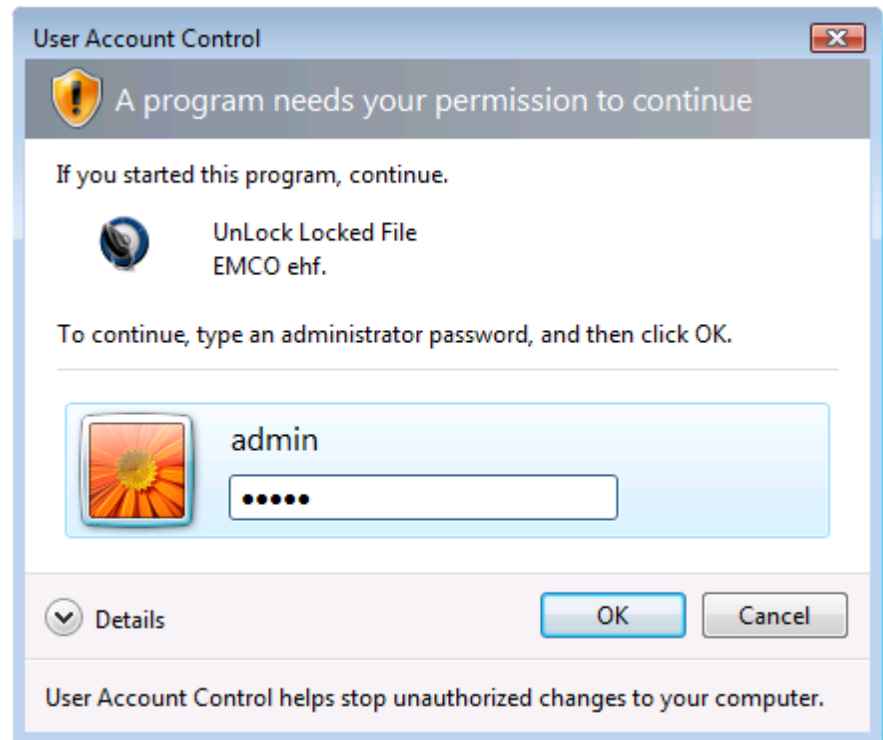


2003 or XP

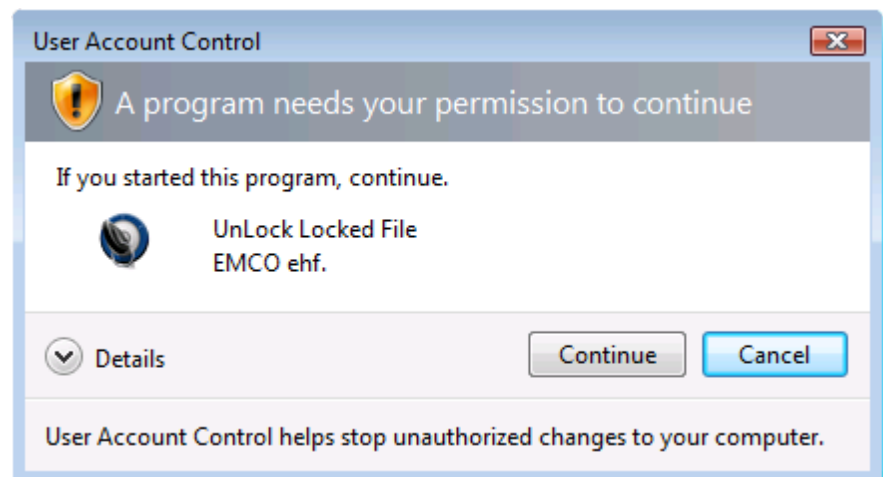




2008 or VISTA



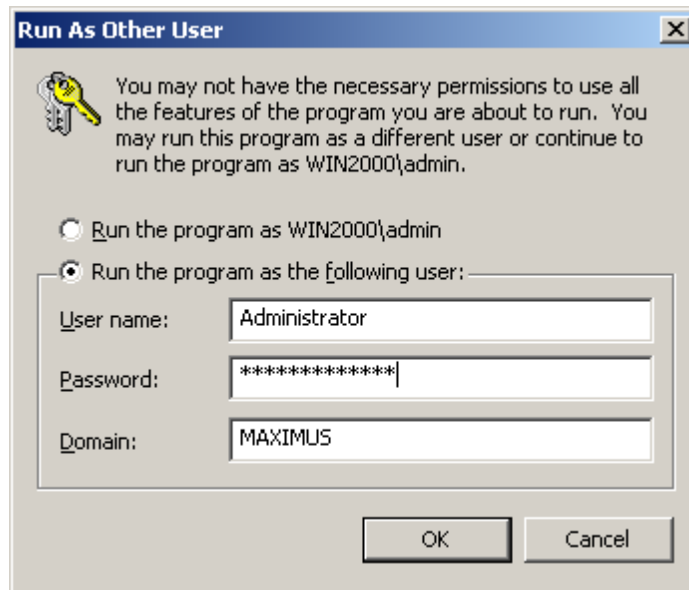
You will see this window if the account you are using has lack of permissions




You will see this confirmation dialog if the UAC is active

From this dialog you can enter your user informations you want to use. But note that you can only use account that you know the password for and if using a user account from another domain you need to have a Trusted relationship to that domain from yours domain.


We will also show you a example where you can use Administrator account locally on another remote computer if your comptuers are only a member of a workgroups not domains. For that to work you will need to change the **Domain:** field info. Let's say you want to run the program.exe as the Administrator user on a computer that have the name **MAXIMUS** then you will enter the **MAXIMUS** name to the domain field of the **Run As** dialog. See screenshot.



Next write Administrator to the **User name:** field and password into the **Password:** Field. Next click then **OK** button and the program.exe file will be run as the Administrator user from the **MAXIMUS** and the process has exactly the same rights as the Administrator user account on the **MAXIMUS** computer.

 WORKGROUP computers does not have the same security as domain computers. For our programs (Emco products) is best to run them as the Domain Administrator user or from a user account that is a member of the Domain Admin group in your domain.

For a workgroup computers it is best to run the program's from a user account that also exists in the administrator group on the remote computer's.

 The password must also match for this to work.