

Auto Update in EventLog Audit Pro

EMCO EventLog Audit Professional comes up with a new and exciting feature of auto update which enables the automatic updating of the scan data for selected machines. So you no longer need to update each machine manually, just configure it to auto update and forget it, EventLog Audit Professional will handle the rest.

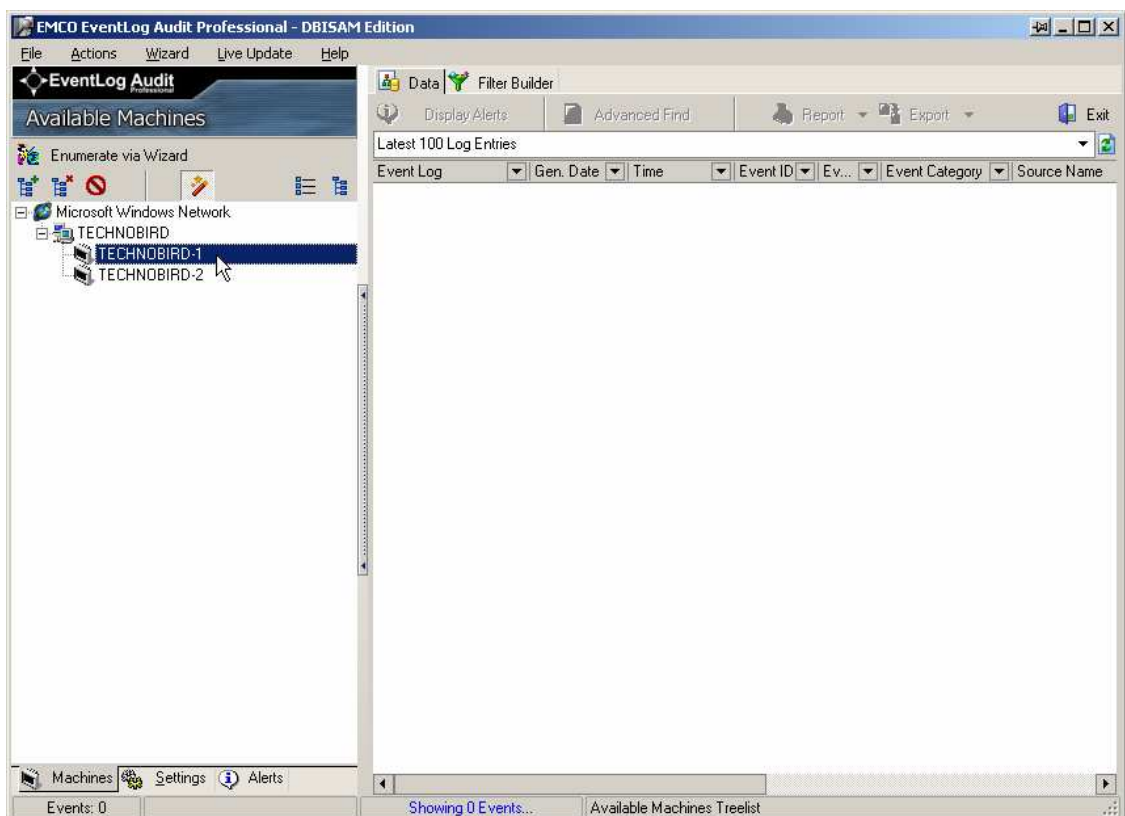
EMCO EventLog Audit provides three ways to auto update the scan data for selected machines.

WAY I

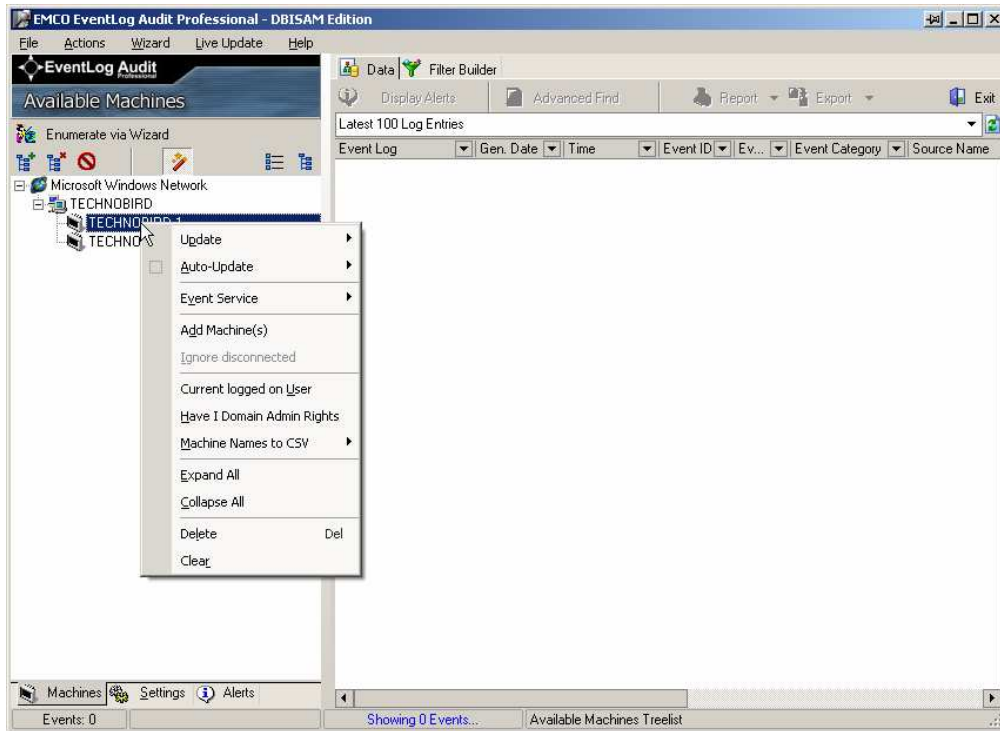
To put machines on auto update:

To put machines on auto update perform the following steps:

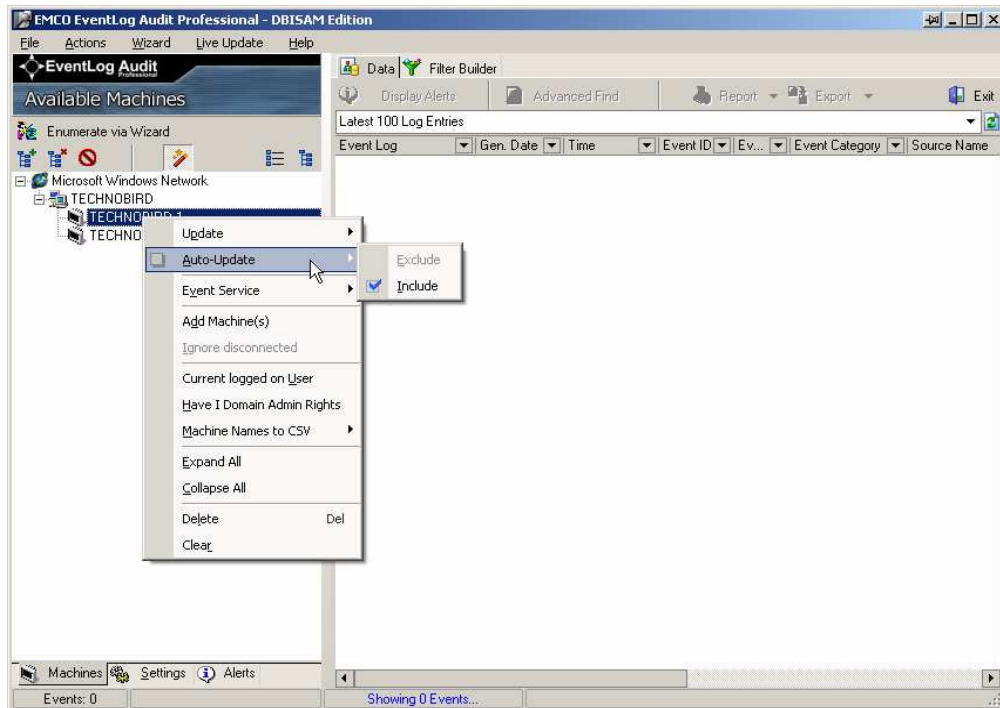
1. Press the **Ctrl** key and click the machines that you want to put on auto update.



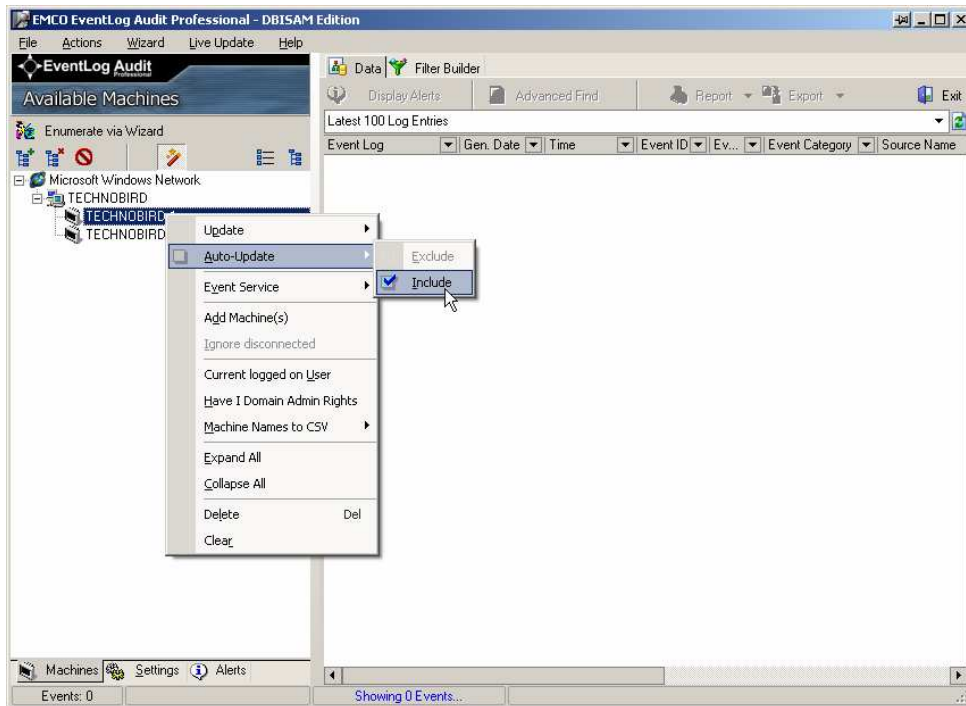
2. **Right click** any of the selected machines a **Popup** menu will appear on the screen.



3. Move to **Auto Update** menu item another popup menu will appear on the screen.



- Click the **Include** menu item from the popup menu.



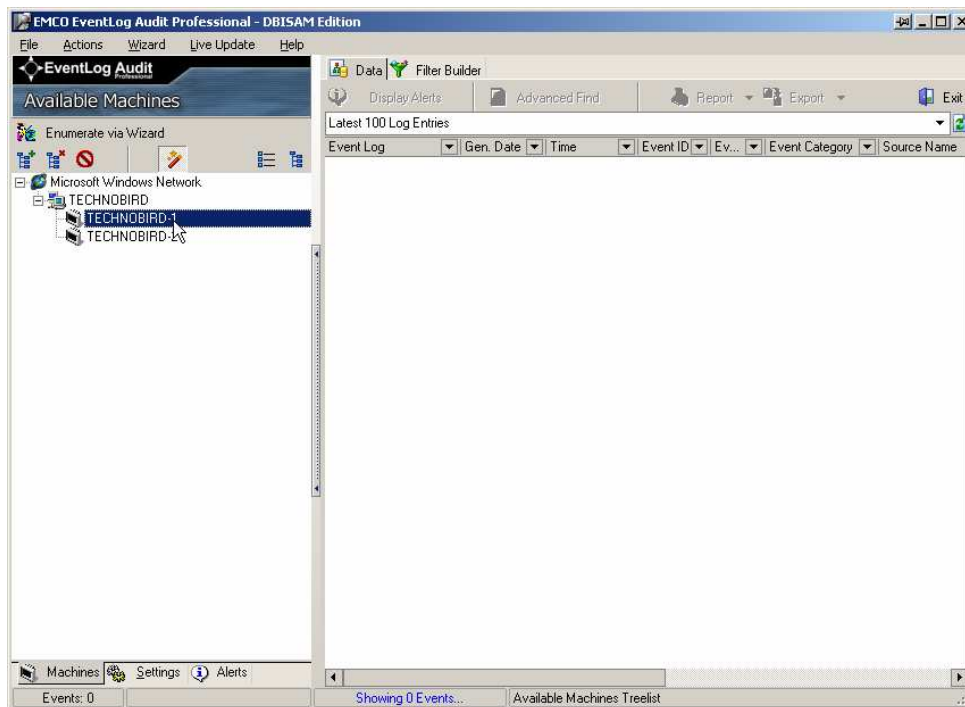
- You are done now this machine will be updated automatically.

WAY II

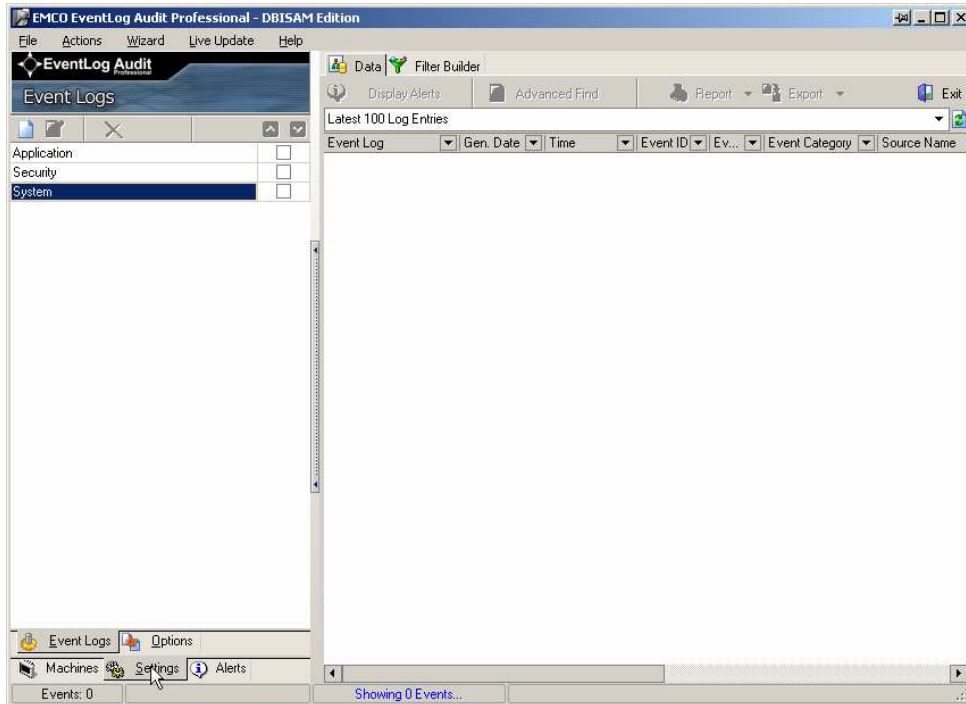
To put machines on auto update:

To put machines on auto update perform the following steps:

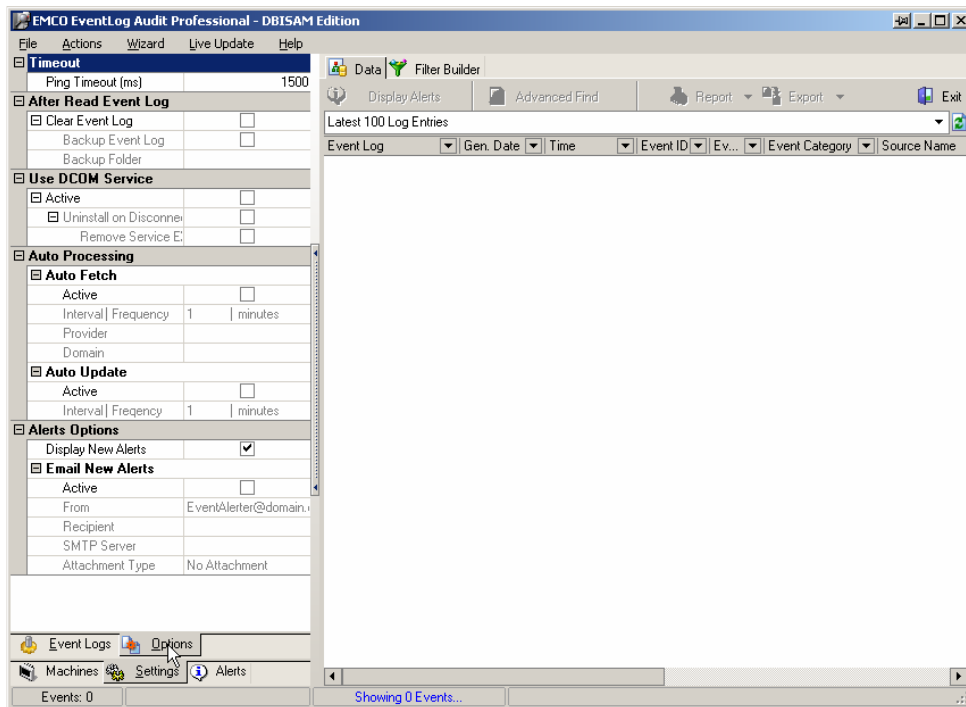
1. Press the **Ctrl** key and click the machines that you want to put on auto update.



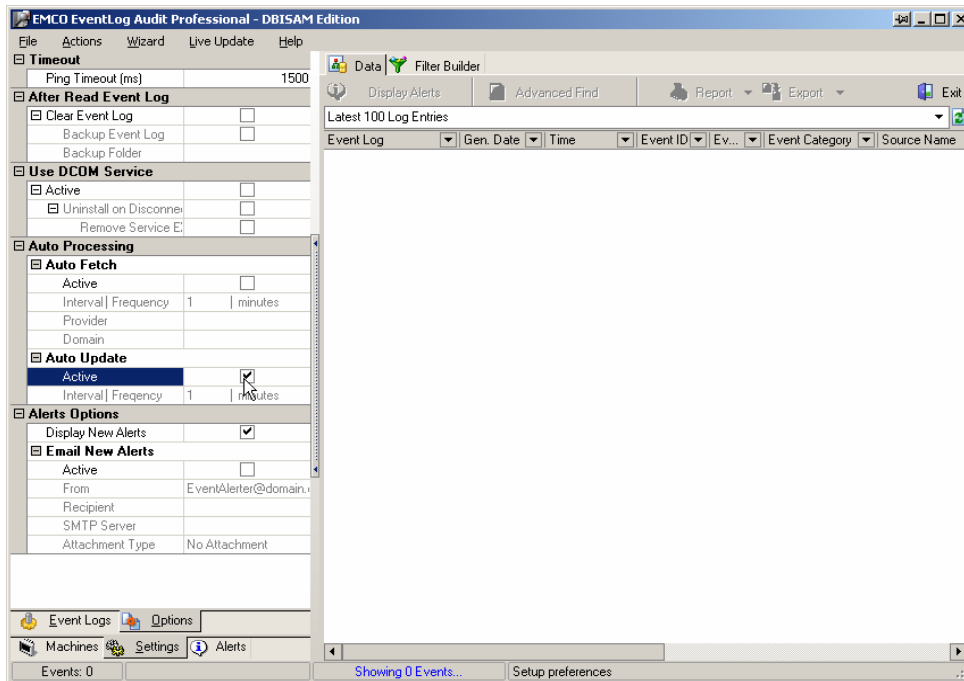
2. Switch to **Settings** Tab.



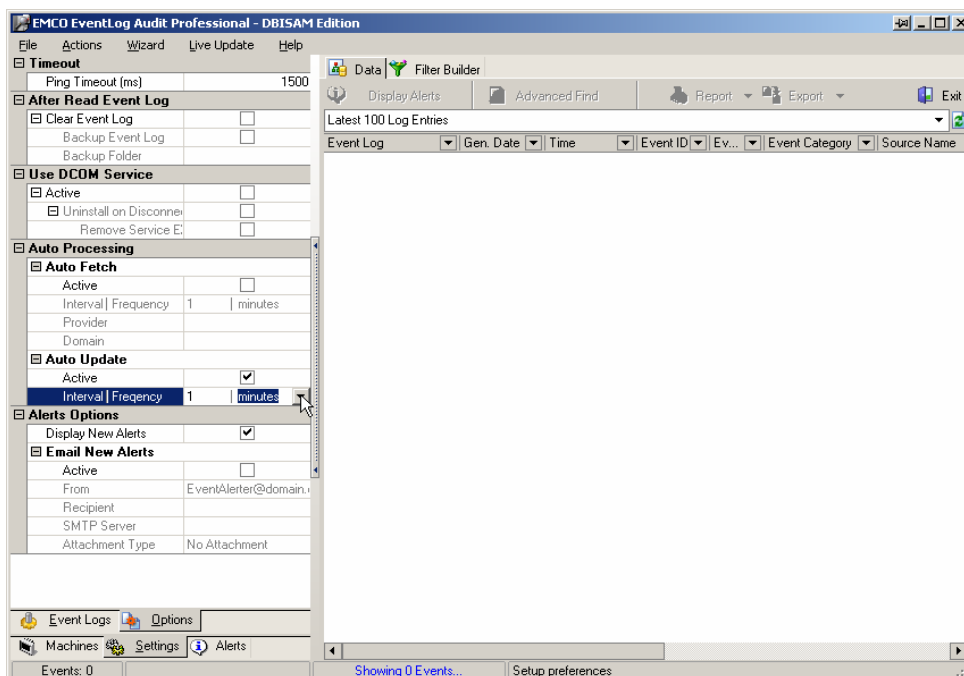
3. Now switch to **Options** sub Tab under **Settings** Tab.



4. Check the **Active** item under **Auto Update** item.



5. Select the **Frequency** after which you want machines to be updated automatically.



6. You are now done the selected machines will be updated automatically.