

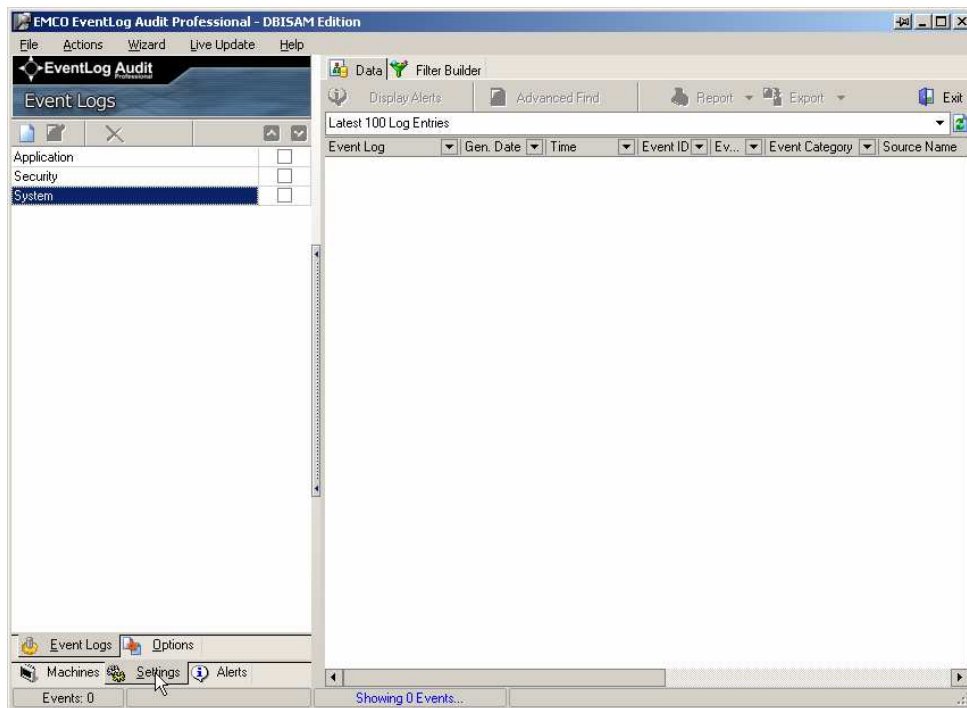
Built-in Scheduler for Auto Fetch

EMCO Event Log Audit Pro enables you to set the built-in scheduler to fetch the newly added machines automatically after a specified interval. This will automatically check for the newly added machines available on the specified domain.

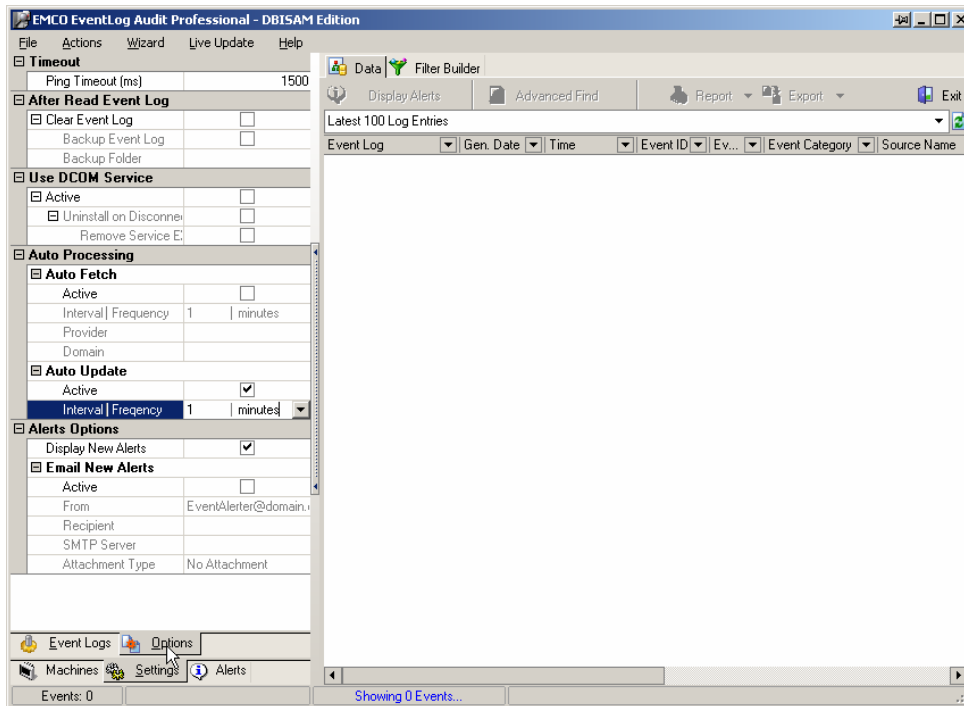
To set built-in scheduler for auto fetch:

To set built-in scheduler for auto fetch perform the following steps:

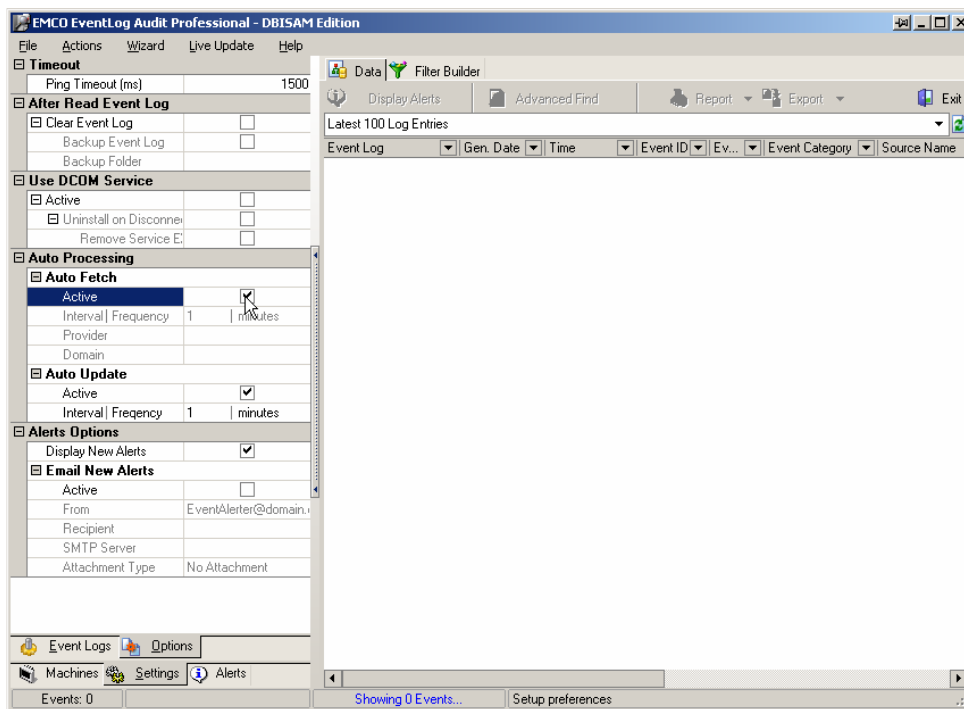
1. Click the **Settings** Tab shown on the lower left corner of the Event Log Audit Pro.



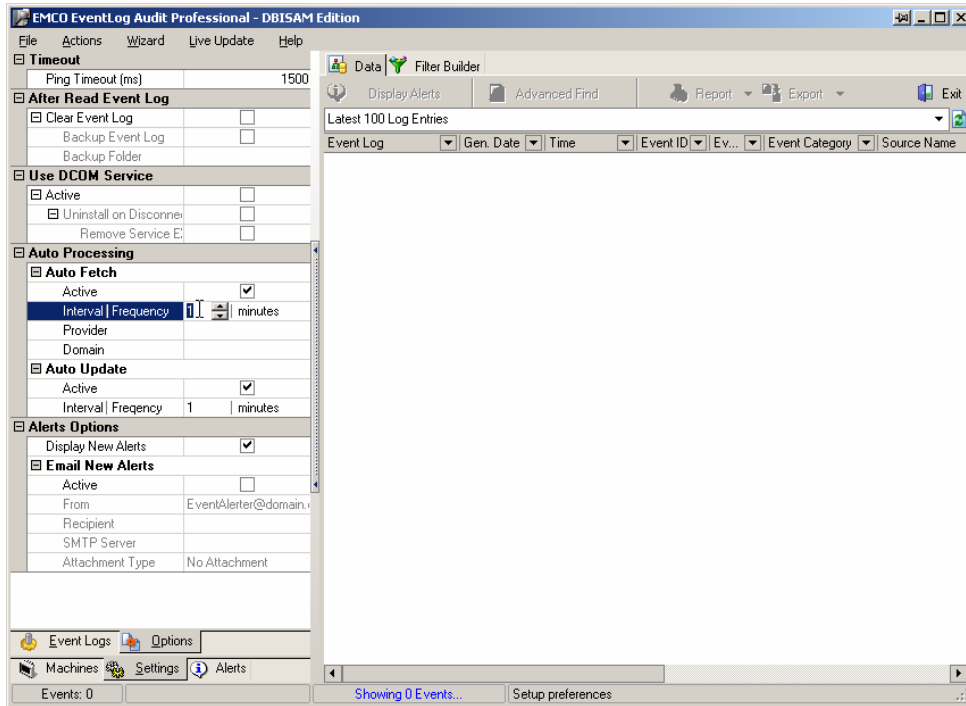
2. Click the **Options** Tab.



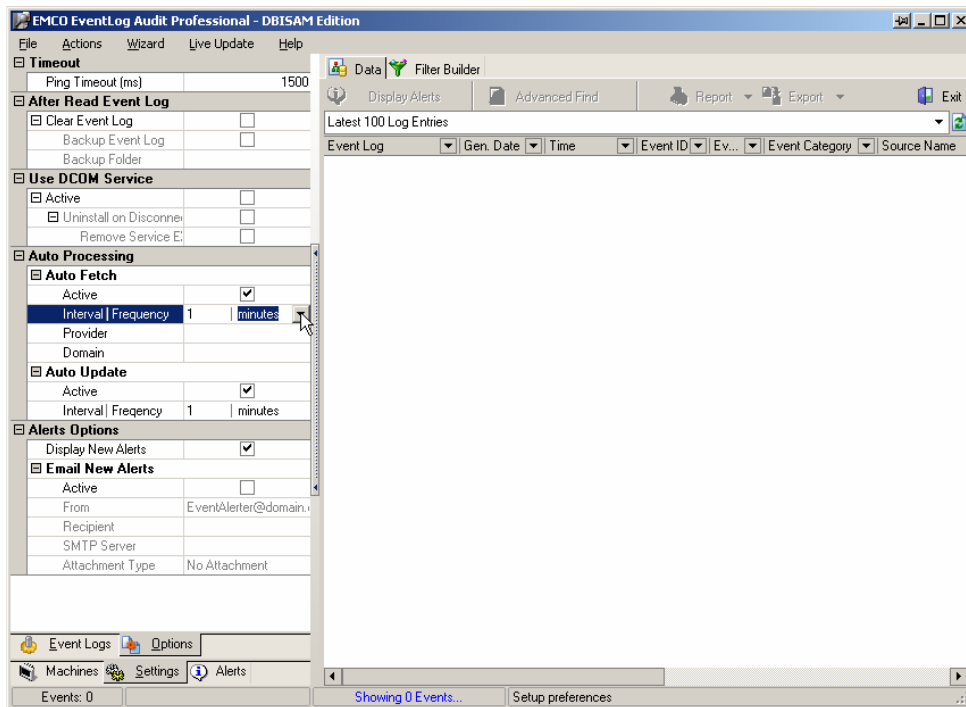
3. Check the **Active** checkbox under the **Auto Fetch**



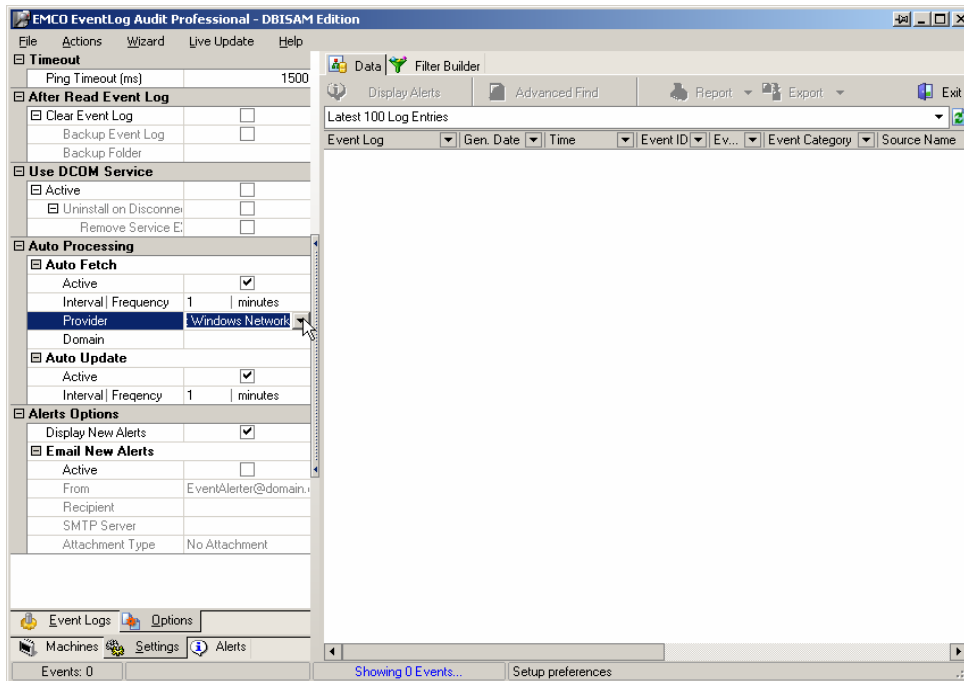
- Type the interval after which you want to repeat the scan, in the **interval** box.



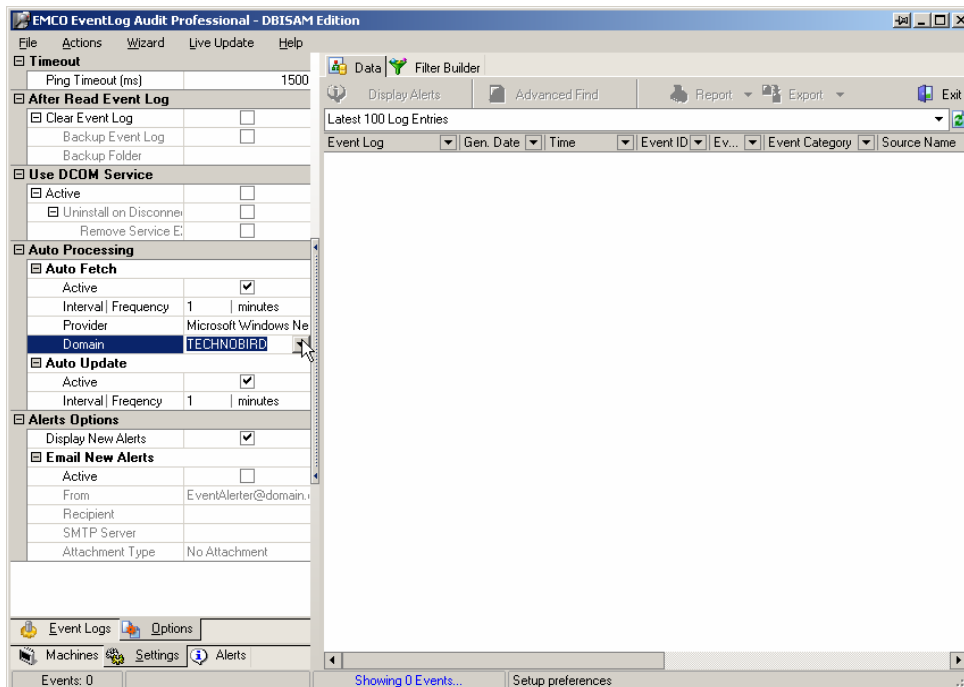
- Select the frequency from the drop down list.



- Select the Provider of your network from the **Network Provider** dropdown list.



- Select the domain from the **Domain** drop down list.



This will continuously check for the newly added machines after the specified interval.