

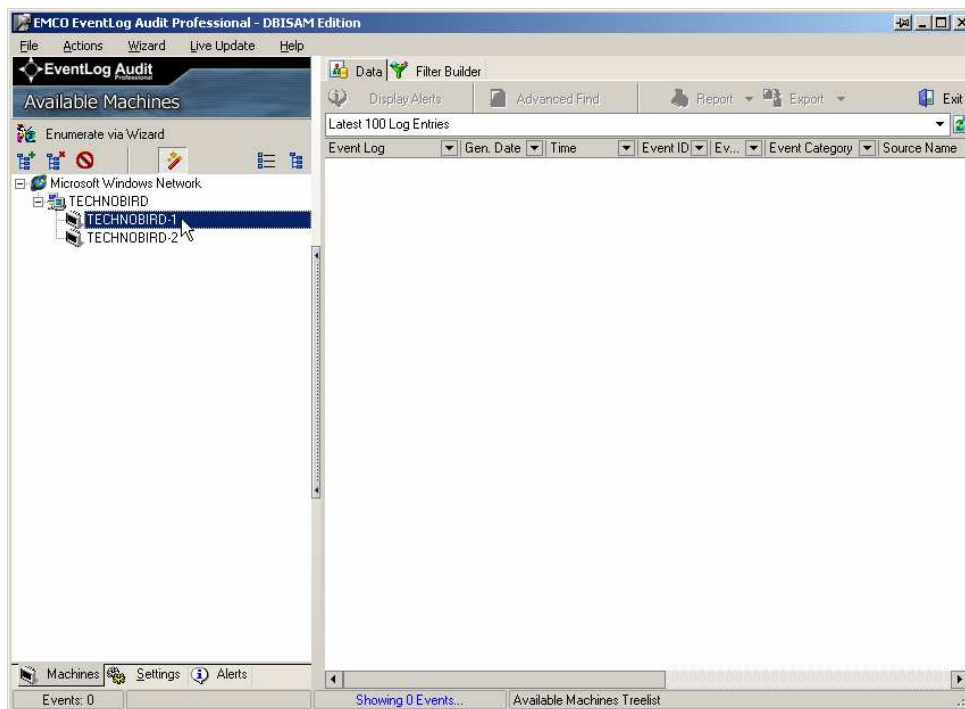
Built-in Scheduler for Auto Update

EMCO Event Log Audit Pro enables you to set the built-in scheduler to update the events log automatically after a specified interval. This will automatically check for the new events log available on machines.

To set built-in scheduler for auto update:

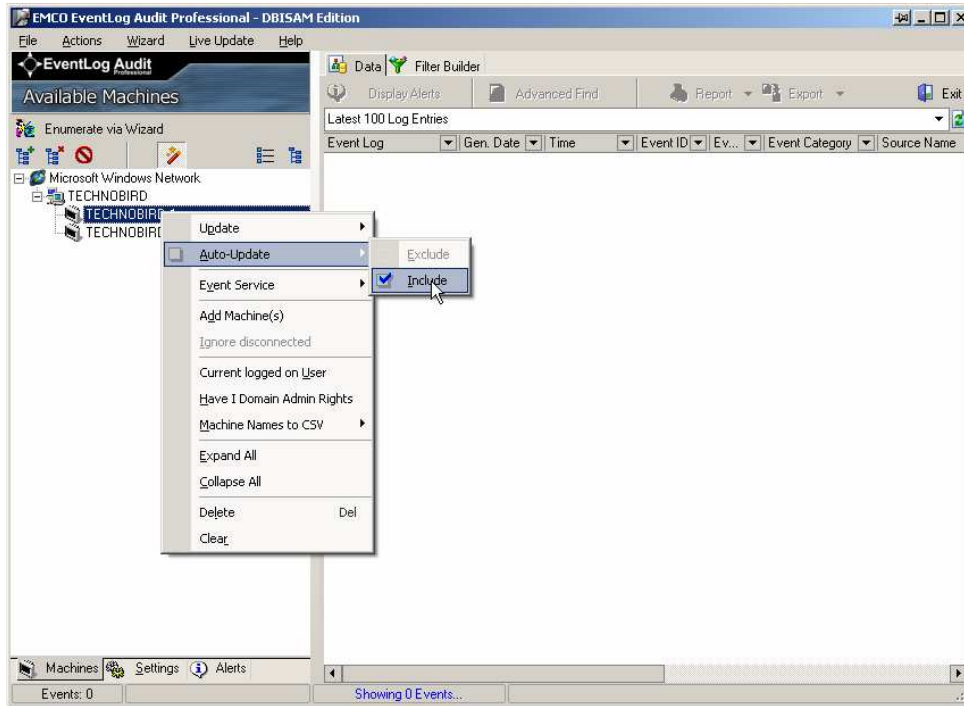
To set built-in scheduler for auto update, perform the following steps:

1. Press the **Ctrl** key and keep it pressed and click the machines that you want to include in the auto update.

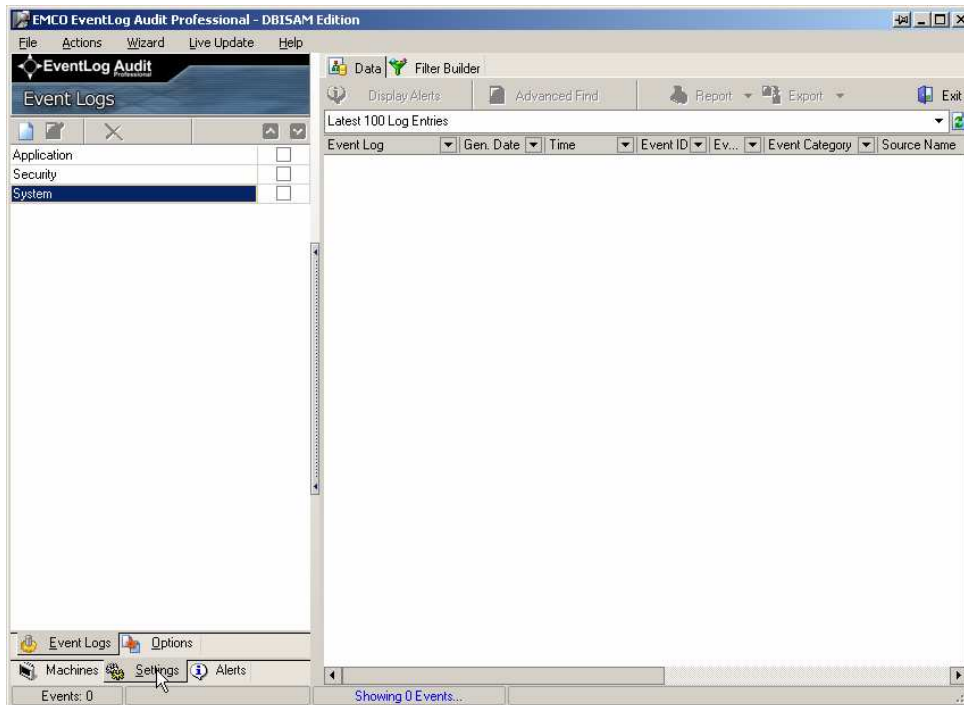


2. Right click any of the selected machines a popup menu will appear.

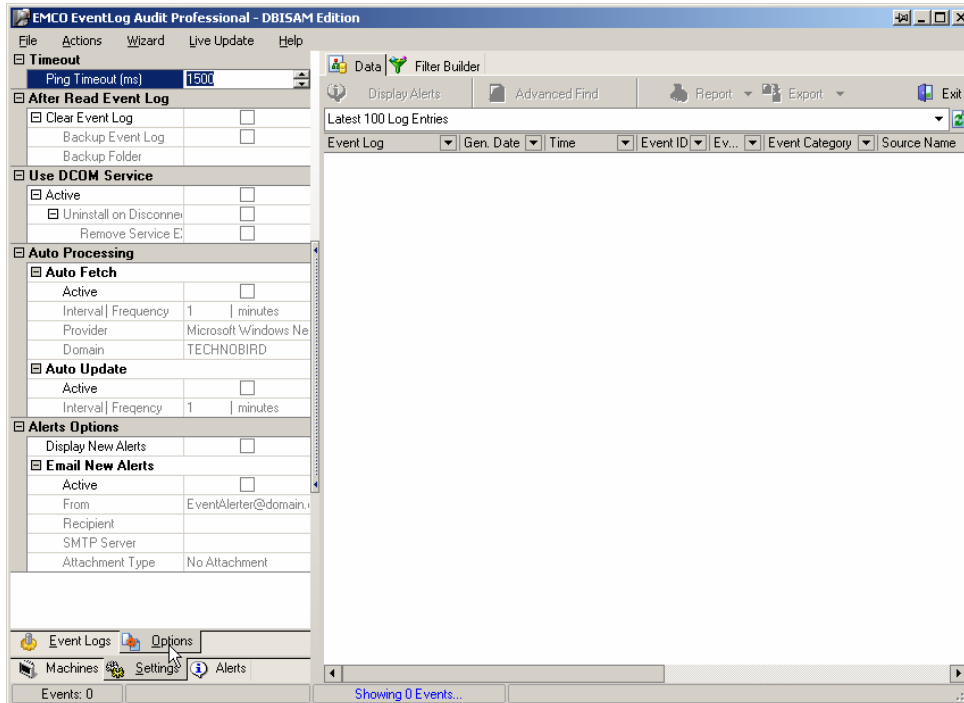
3. Move the mouse pointer to **Auto Update** menu option, another popup menu will appear. Click the **Include**.



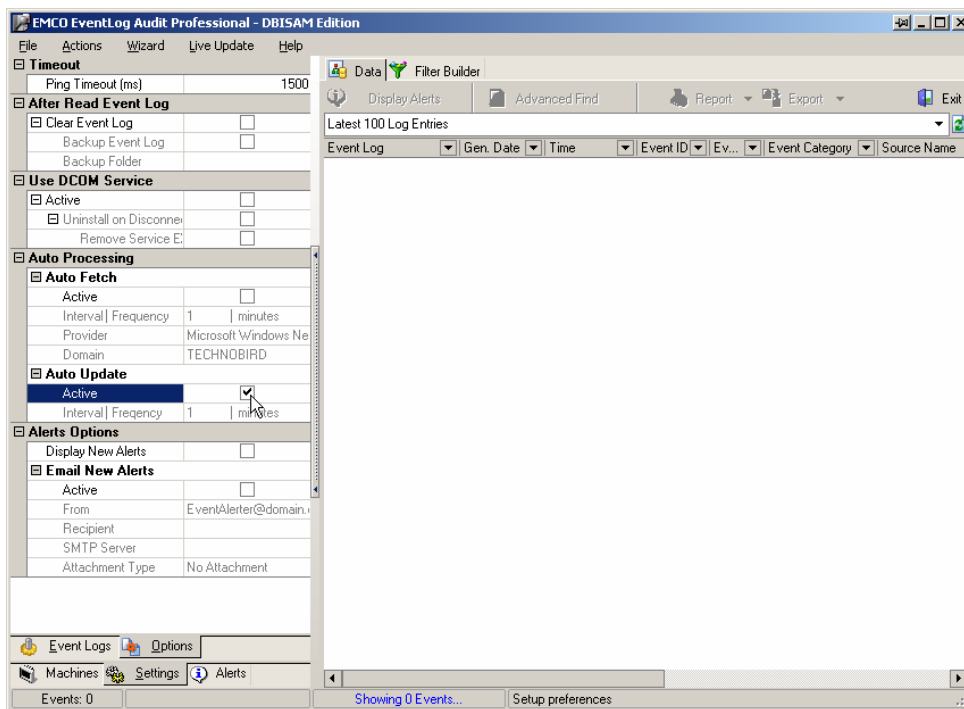
4. Click the **Settings** Tab shown on the lower left corner of the Event Log Audit Pro.



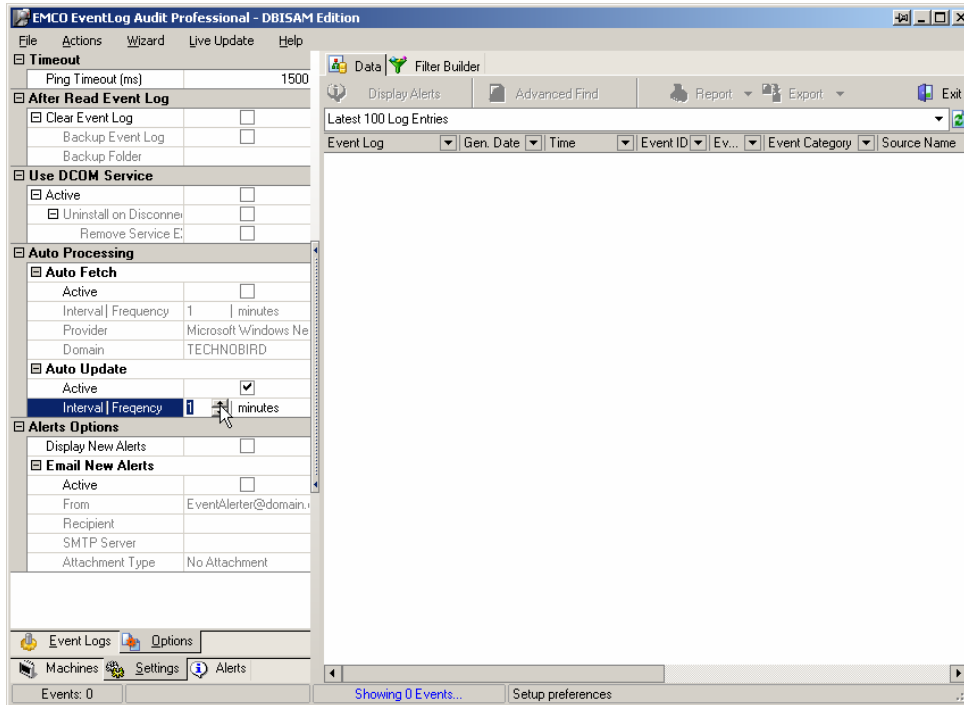
5. Click the **Options** Tab.



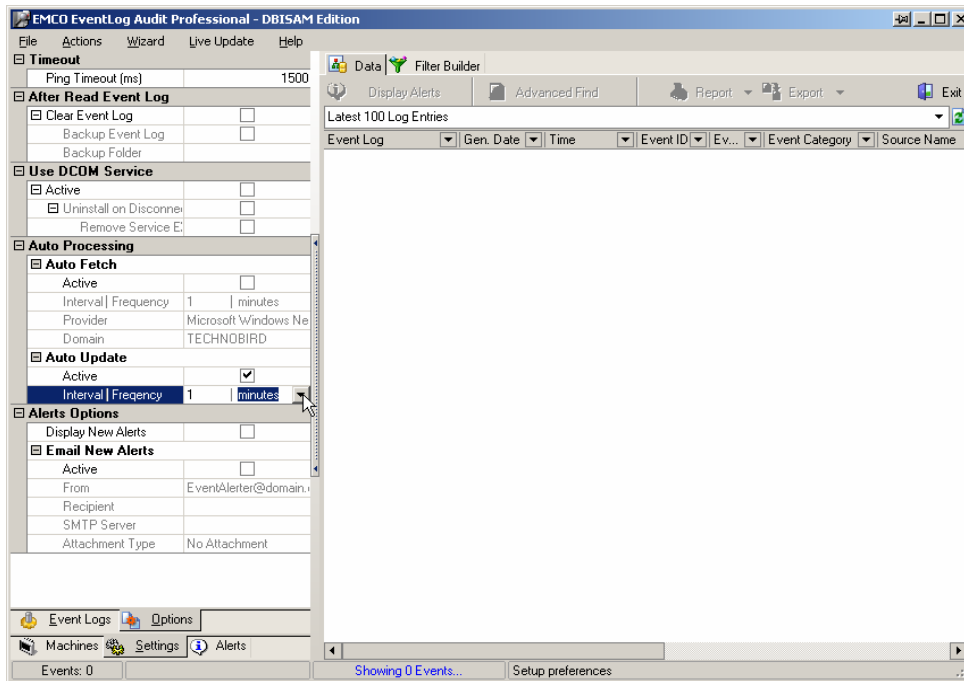
6. Check the **Active** checkbox under the **Auto Update**



- Type the interval after which you want to repeat the scan, in the **interval** box.



- Select the frequency from the drop down list.



This will continuously check for the new events log after the specified interval.