

## Running ELA Pro on a Machine having WinXP SP2

This tutorial will guide you on running EventLog Audit Professional. For this you will have to configure Firewall on a machine on which you want to install EventLog Audit Professional. Windows XP service Pack 2 comes up with a built in firewall to minimize the chance of attacks on your machine.

To run **EMCO EventLog Audit Professional** on your machine perform the following steps:

1. Install **EMCO EventLog Audit Professional** on your machines.
2. Configure Firewall on your machines( Please see the next session for more information about configuring Firewall on your machine)

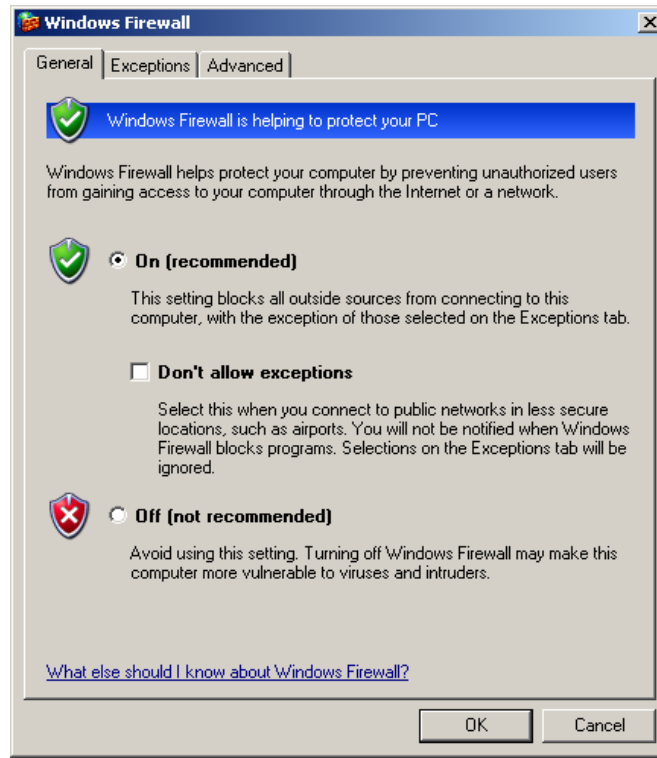
## Configuring Firewall

To configure **Firewall** on your machines perform the following steps:

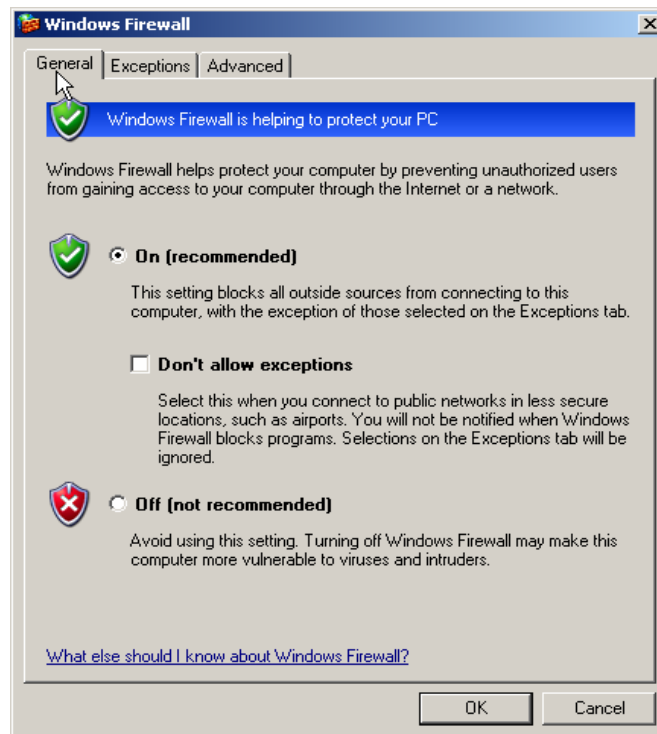
3. Move to **Control Panel**.
4. Double click the **Windows Firewall** icon located in the **Control Panel** to launch the Windows Firewall applet.



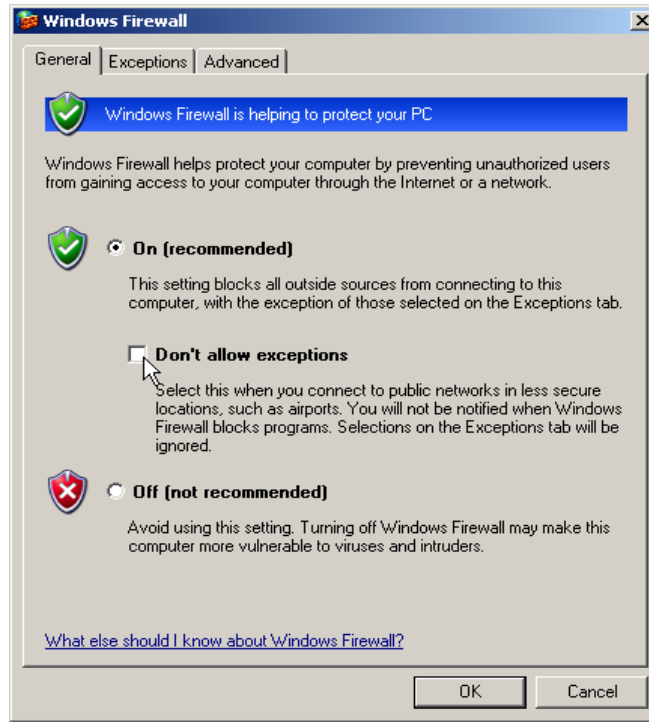
5. **Windows Firewall dialog box** will appear on the screen.



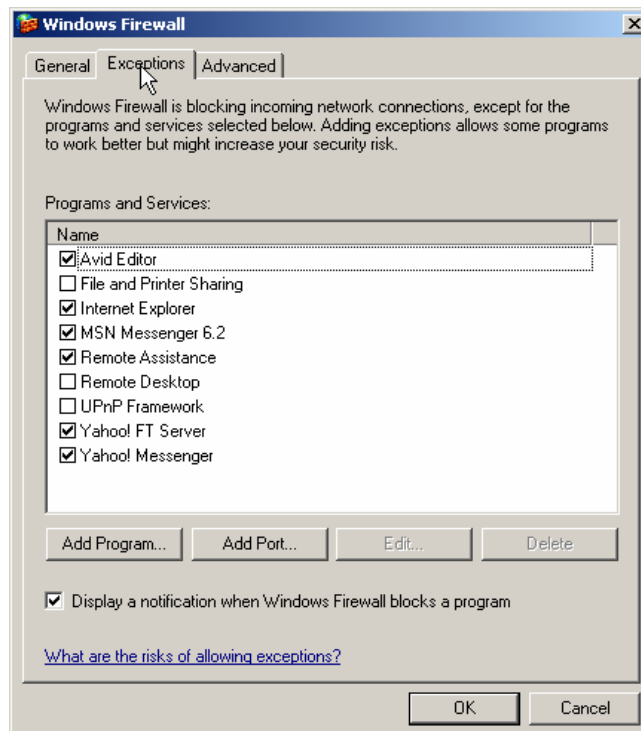
6. Switch to the **General Tab**.



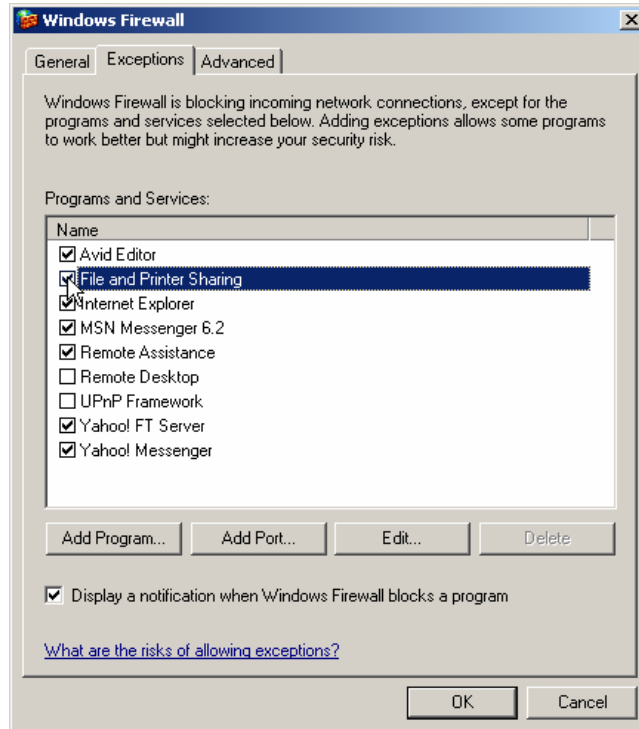
- If Firewall is turned on; make sure **Don't allow exceptions** check box is unchecked.



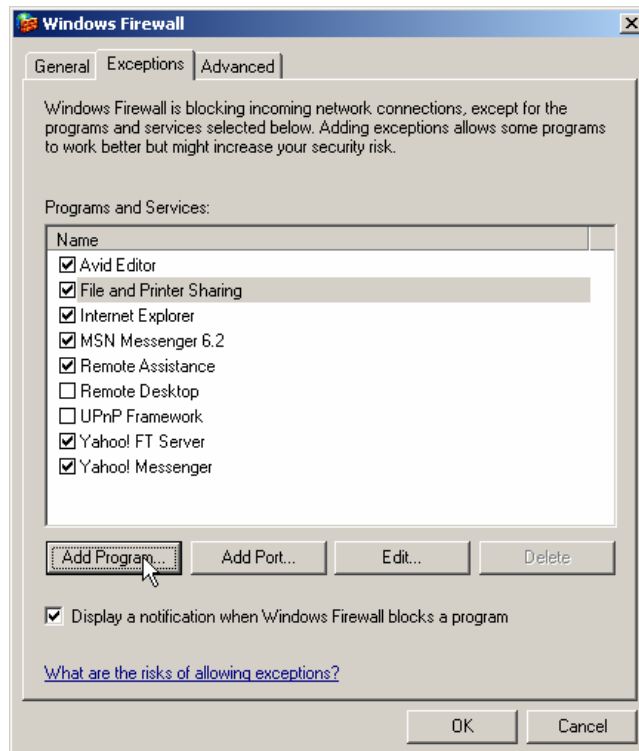
- Switch to **Exceptions** tab.



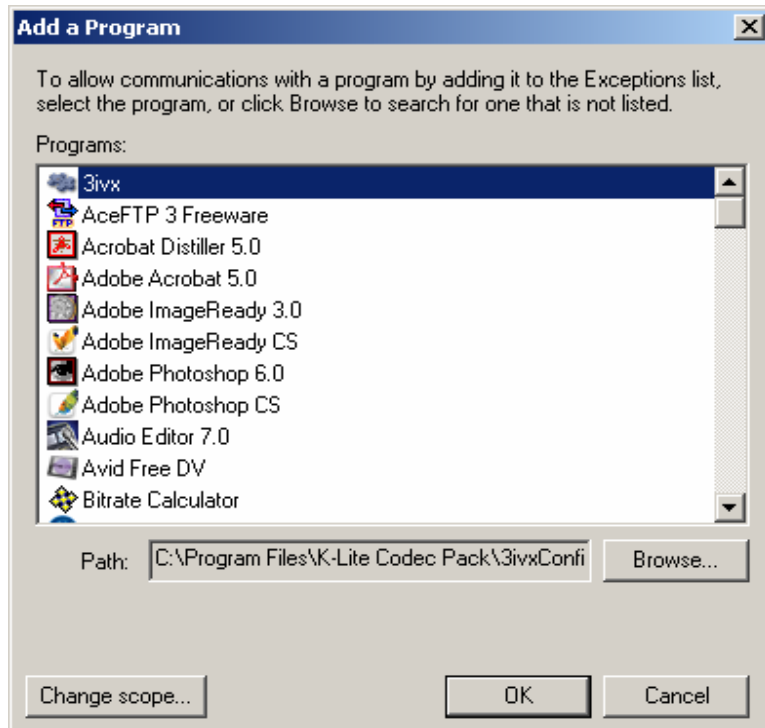
9. Check the **File and Printer Sharing** checkbox.



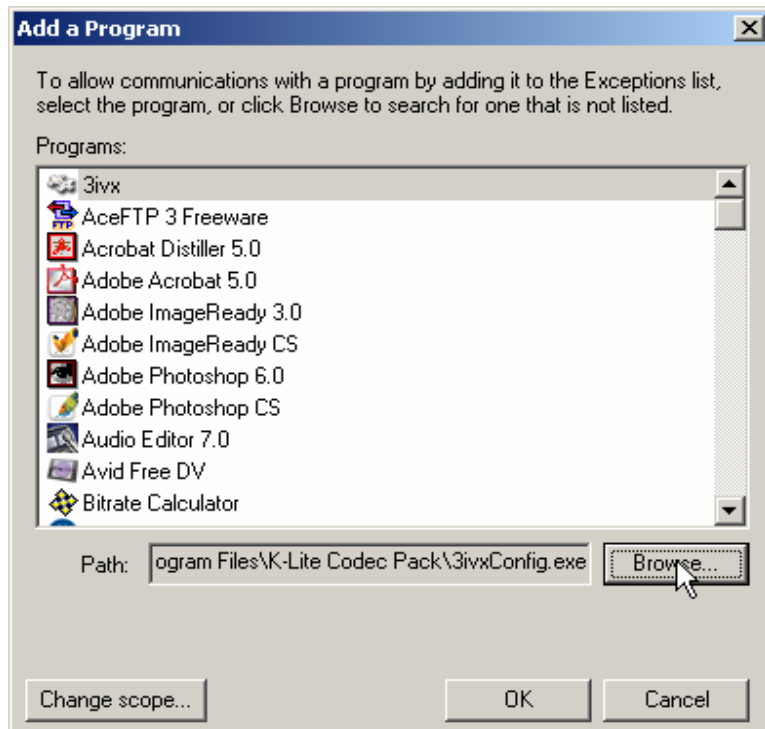
10. Click the **Add Program** button.



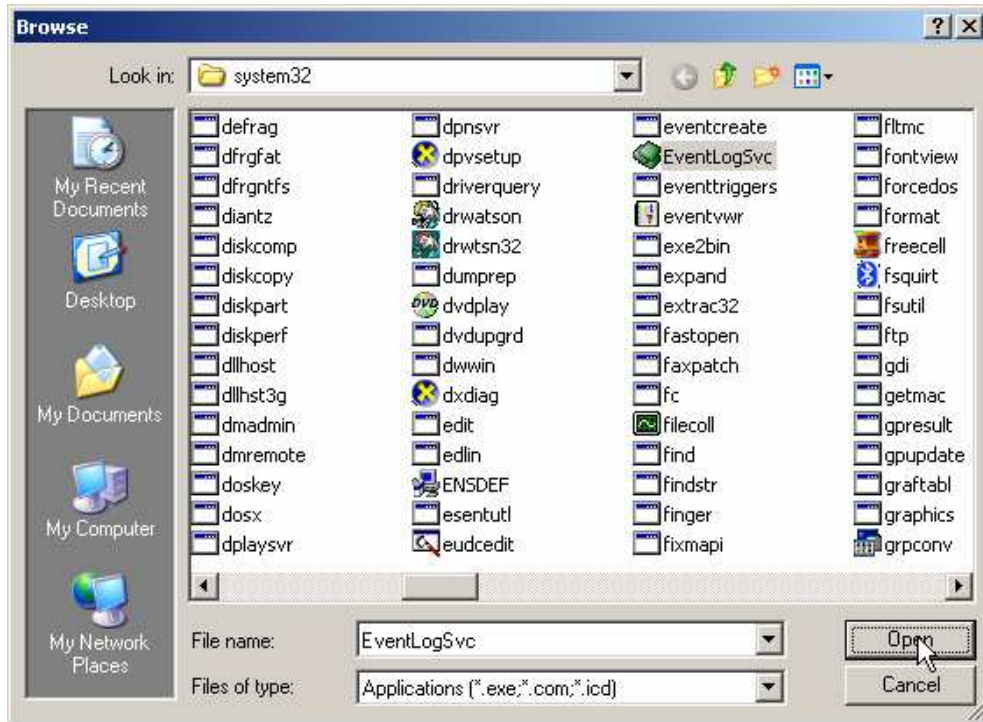
11. **Add Program** dialog box will appear on the screen.



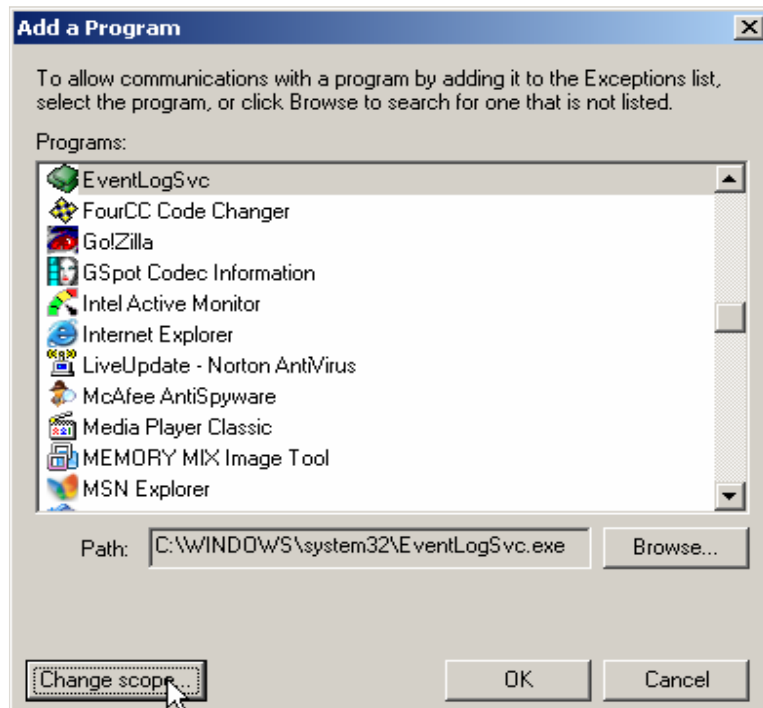
12. Click the **Browse** button.



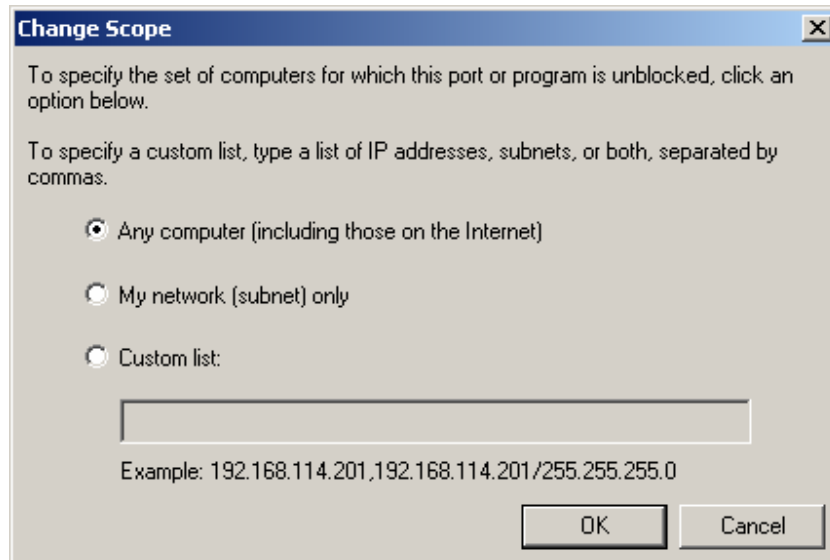
13. **File open** dialog box will appear on the screen.
14. Locate the **EventLogSvc.exe** in **%SYSTEM32%** and click **Open** button.



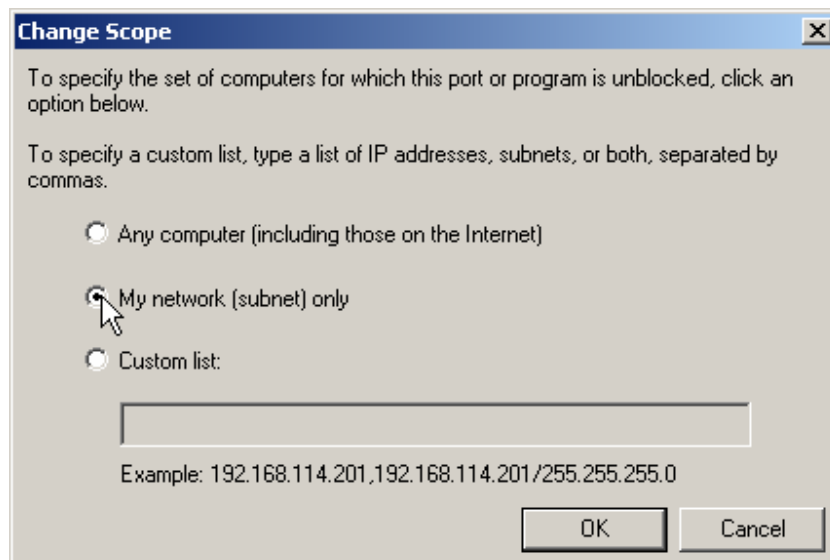
15. Click **Change Scope** button.



16. **Change Scope** dialog box will appear on the screen.

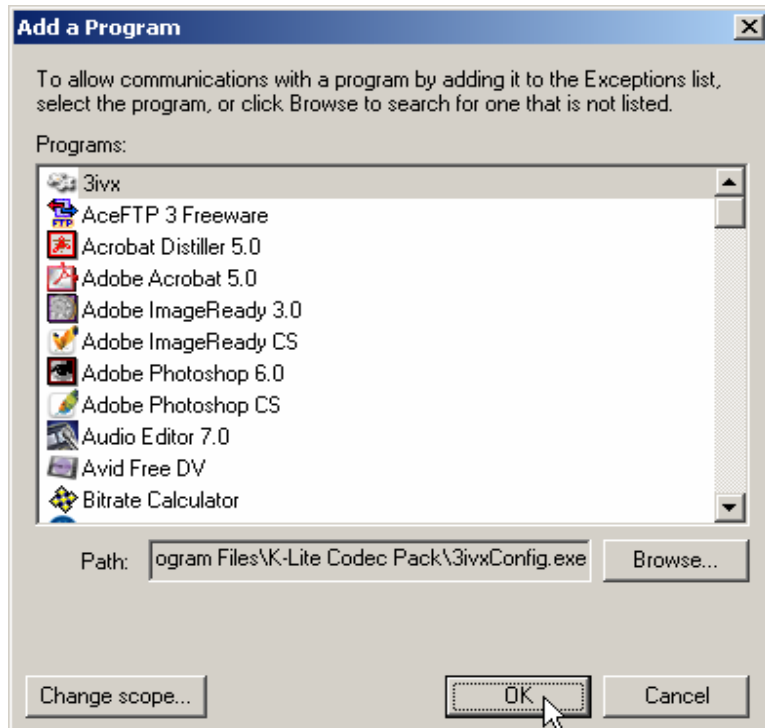


17. Click the **My network (subnet) only** radio button.

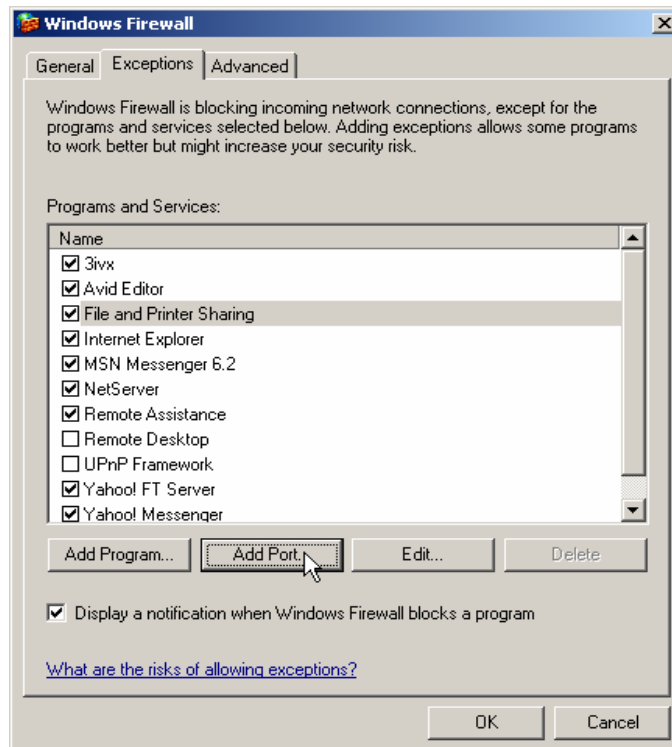


18. Click **OK** button.

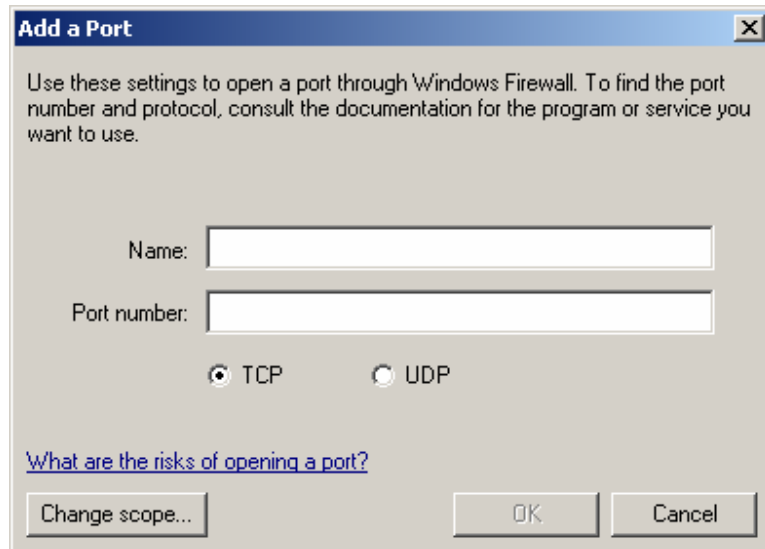
19. Click **OK** again in Add a Program dialog box.



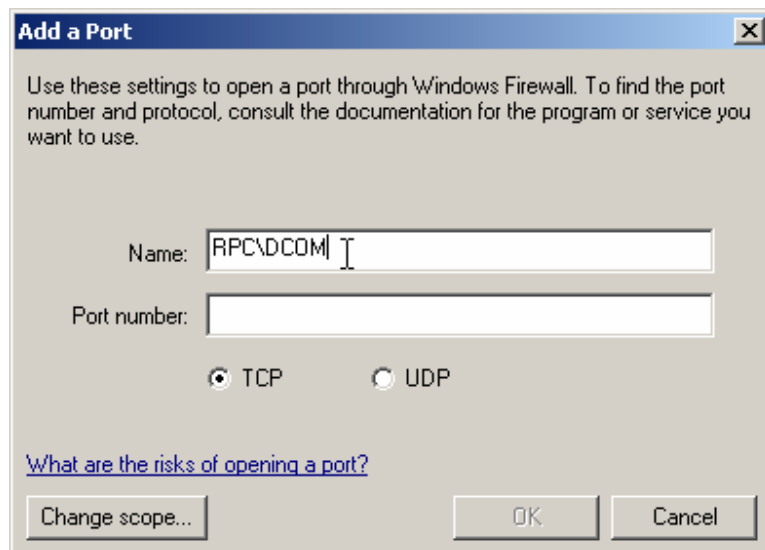
20. Click **Add Port** button.



21. **Add a Port** dialog box will appear on the screen.



22. Type **RPCDCOM** in the **Port Name** textbox.



23. Type 135 in the **Port Number** textbox.

**Add a Port** [X]

Use these settings to open a port through Windows Firewall. To find the port number and protocol, consult the documentation for the program or service you want to use.

Name:

Port number:

TCP     UDP

[What are the risks of opening a port?](#)

24. Click **TCP** radio button to select it.

**Add a Port** [X]

Use these settings to open a port through Windows Firewall. To find the port number and protocol, consult the documentation for the program or service you want to use.

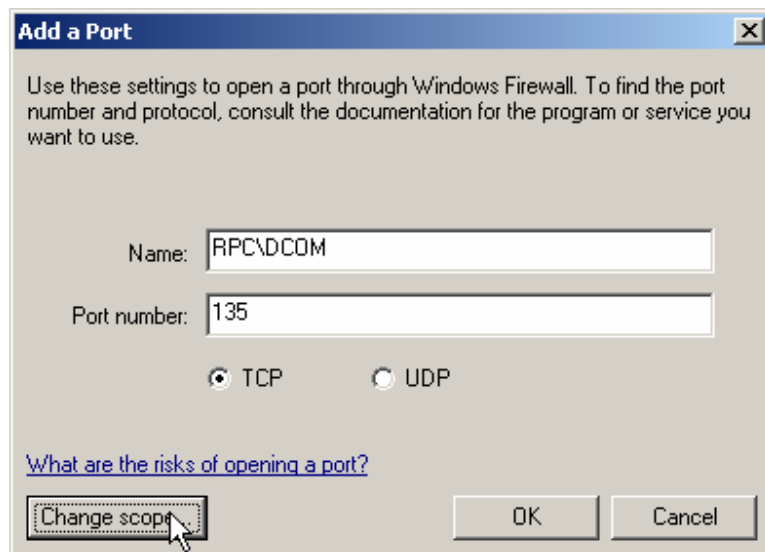
Name:

Port number:

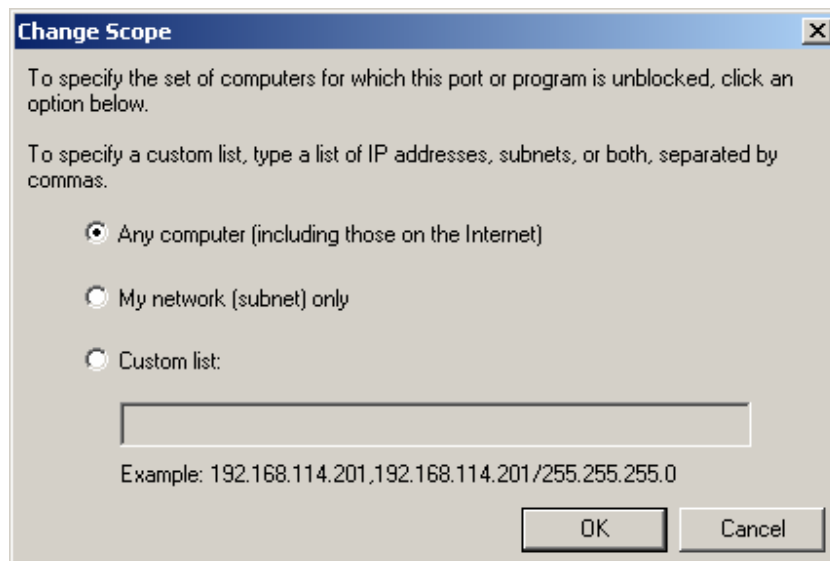
TCP     UDP

[What are the risks of opening a port?](#)

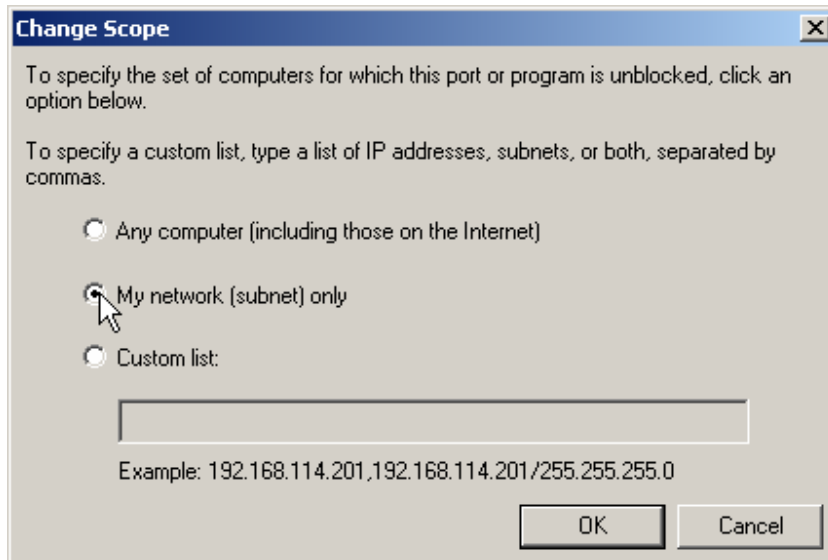
25. Click **Change Scope** button to set the scope of this port.



26. **Change Scope** dialog box will appear on the screen.



27. Click the **My network (subnet) only** radio button.



28. Click **OK** button.

29. Please repeat the steps from **20** to **27** to add the following ports as well:

- a. 136
- b. 139
- c. 445

30. Click **OK** button again in **Add a Port** dialog box.

31. Click the **OK** button in the Windows Firewall dialog box.

32. You are now ready to run **EventLog Audit Professional** on this machine.

If you still face some problems while running EMCO EventLog Audit Professional; please see the system requirements mentioned at [http://www.emco.is/eventlog\\_auditpro/requirements.html](http://www.emco.is/eventlog_auditpro/requirements.html) to make sure that your machine is capable of running EMCO EventLog Audit.