

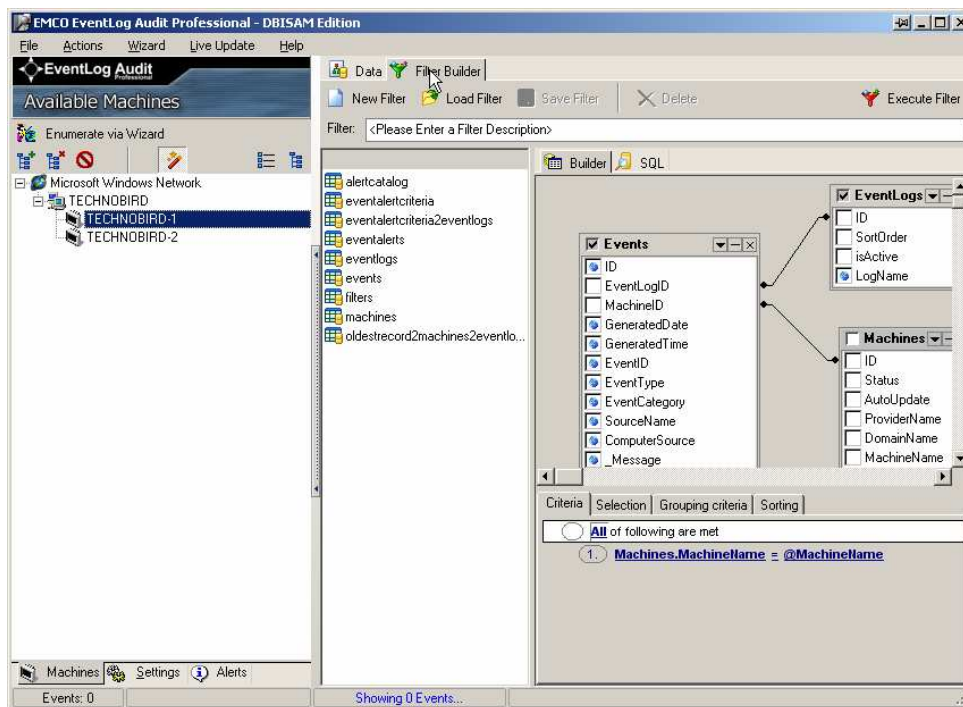
## Using Query Builder

New EMCO EventLog Audit Professional comes up with a powerful visual Query builder that enables you to define SQL queries more easily in record time. So, if you are not a SQL expert you can use utilize the powers of EventLog Audit Professional's powerful Query builder the SQL code will be automatically generated.

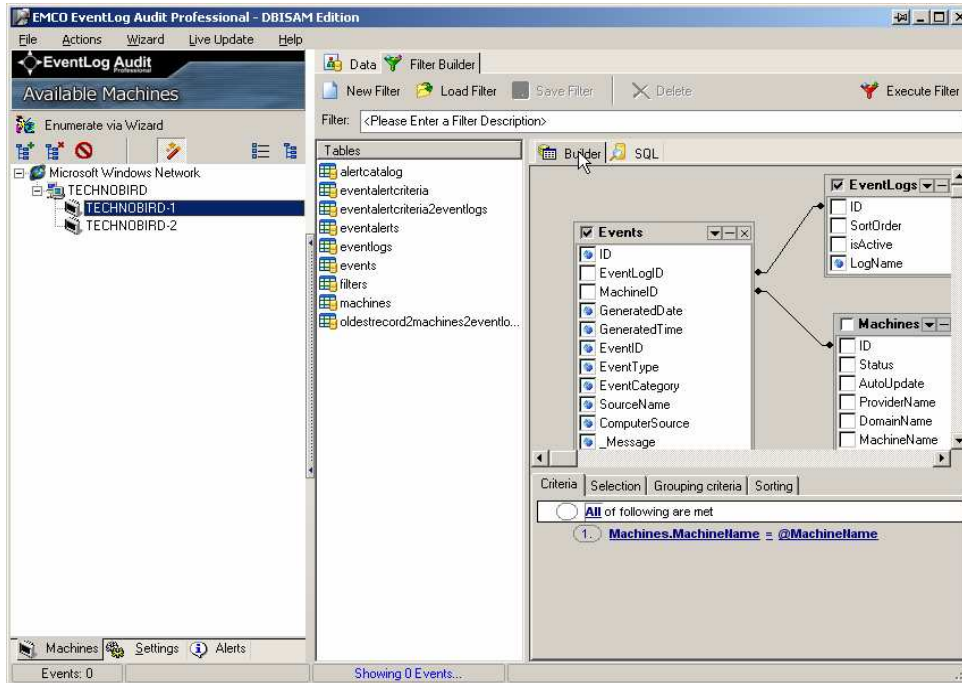
### To create a SQL query:

To create SQL query perform the following steps:

1. Click the **Filter Builder Tab**.

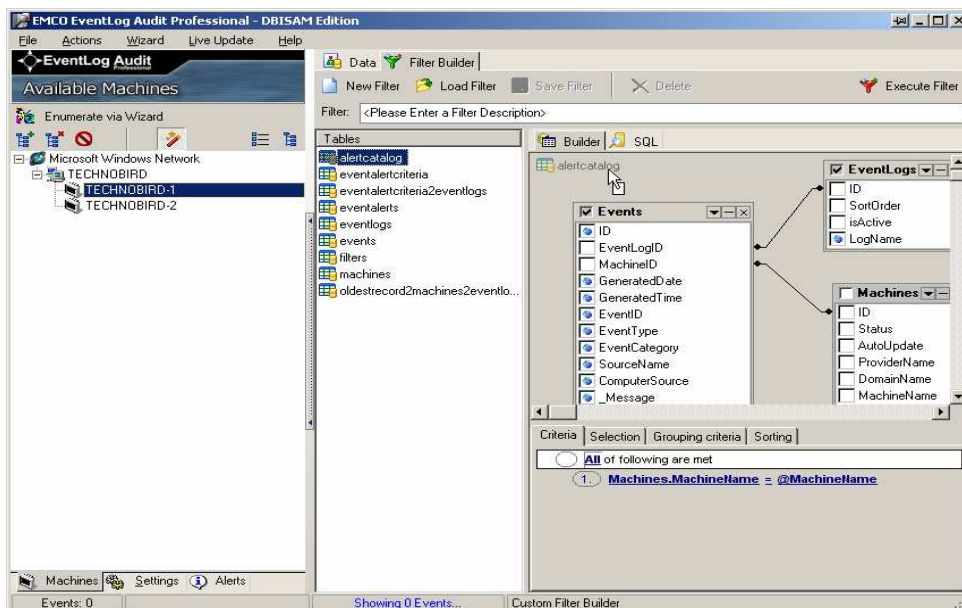


2. Click **Builder Tab** to switch to the visual query builder of ELA Pro.

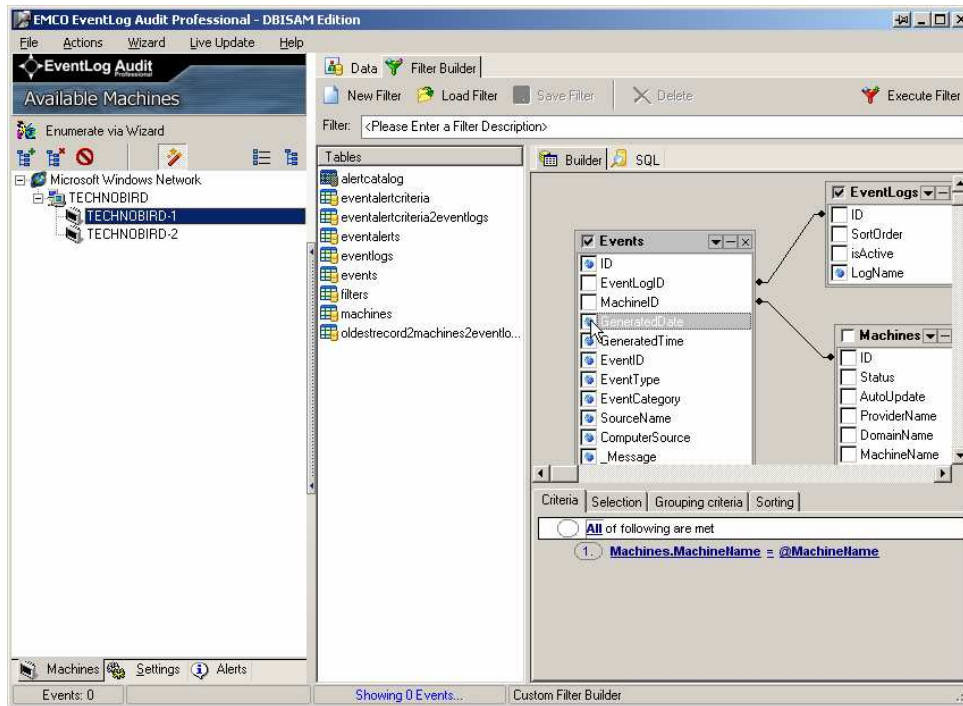


3. Add Tables from Tables Tab shown on the left of the Builder tab. You can add the tables through the following ways:

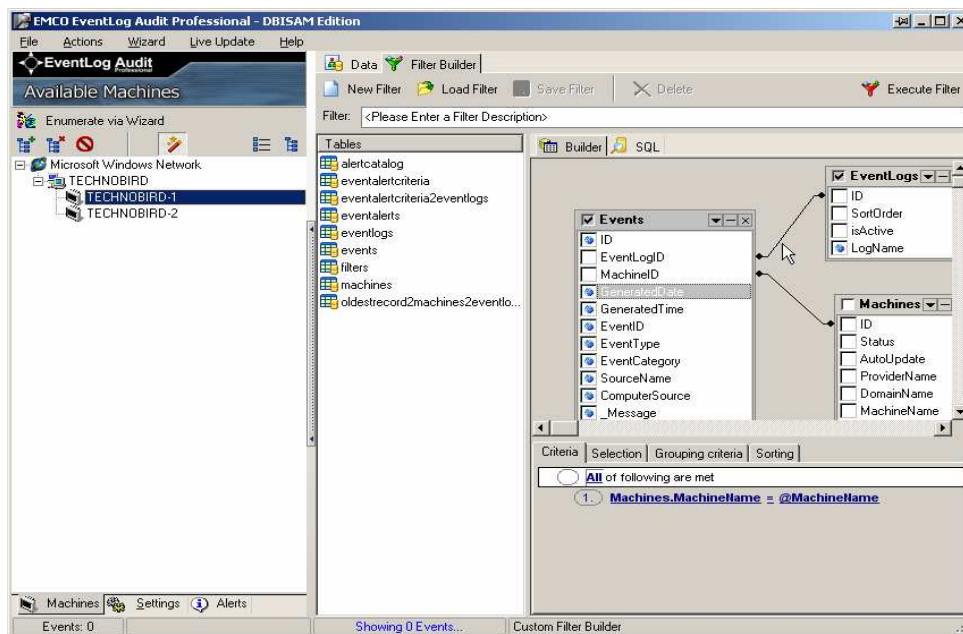
- ✧ Drag the tables from the Table Tab and Drop them to the Builder Tab
- ✧ Double click the Table name on the Table Tab and the Table will be added to the Builder Tab.



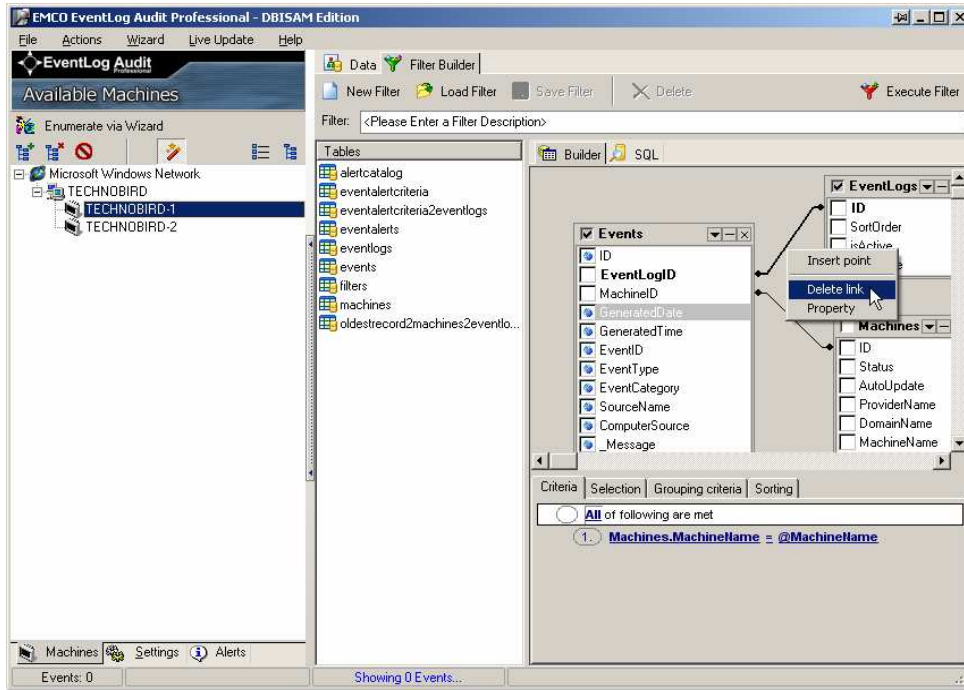
4. Check the fields of each table that you want to include in the data retrieval from a particular table.



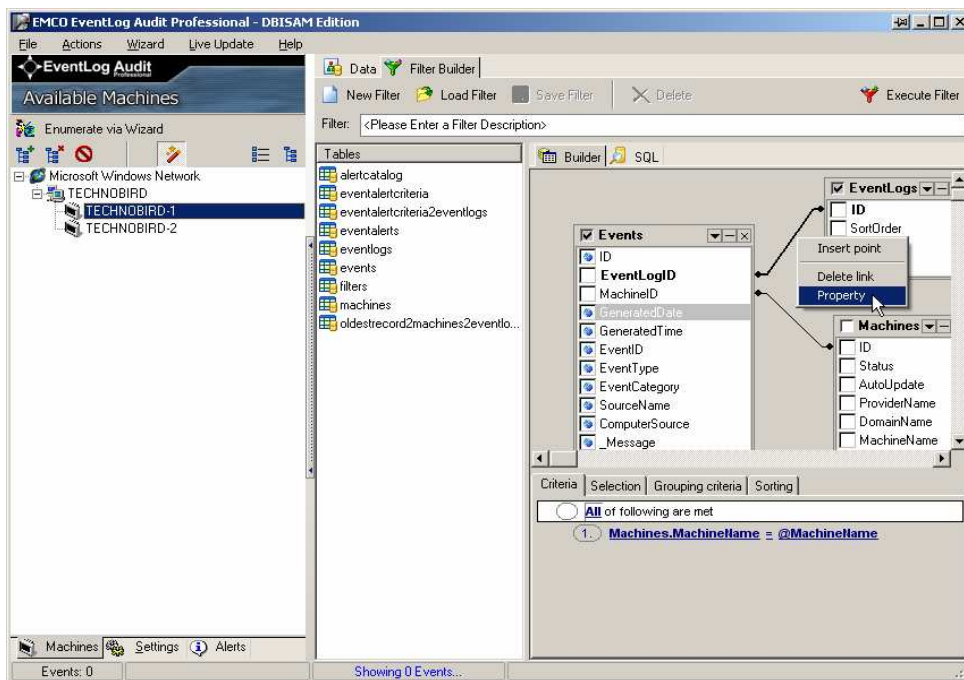
5. Now create the relationships between the tables by selecting an attribute of a table and drag it to the table with which you want to create the relation and drop it to that particular attribute with which you want to link it.



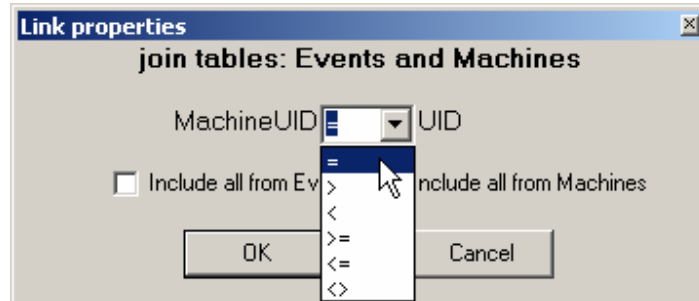
- If you want to remove a relationship, just right click on that link and click the **Delete Link** from the popup menu.



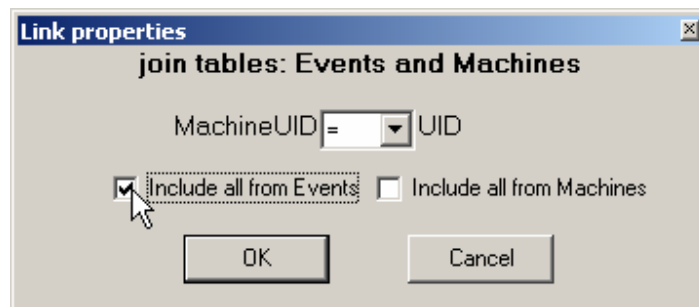
- Right click on a link to set its properties, it will display a popup menu click the **Properties** menu item. A link properties dialog box will appear.



- Select the required evaluation statement from the drop down list.

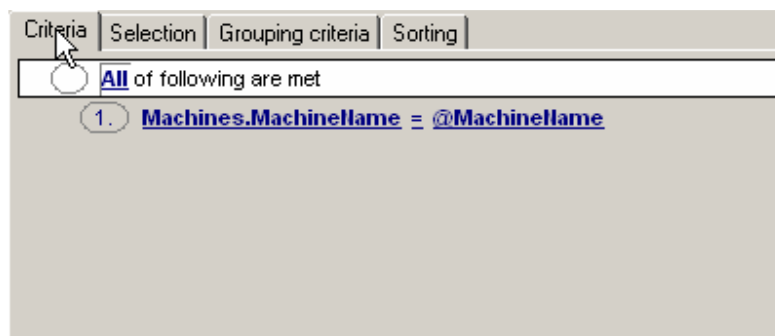


- If you want to include all records from the Tables check their respective Checkboxes.

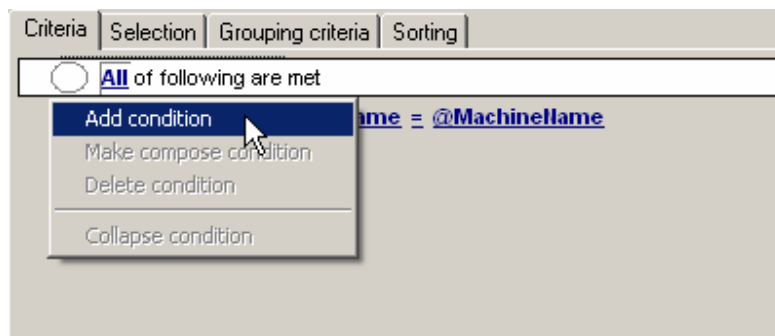
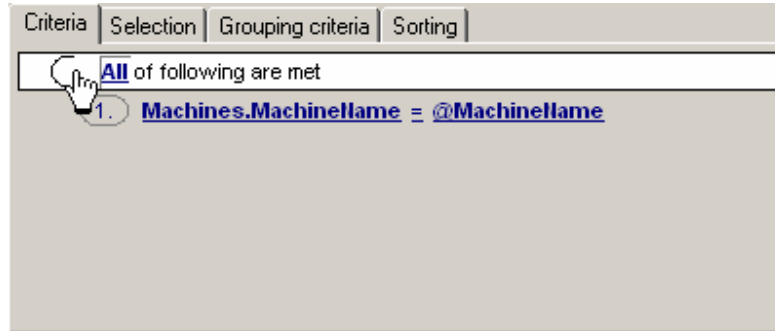


- Click **OK** button.

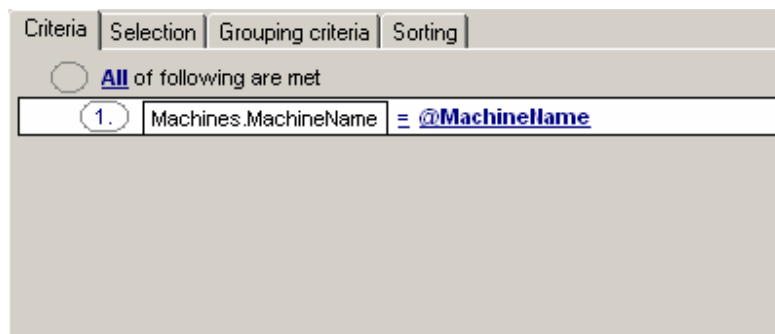
- Now to create search criteria, select the **Criteria Tab** shown below the builder area.



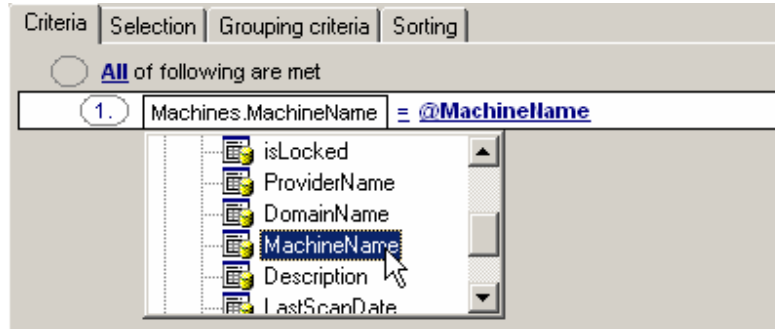
12. Click the Circle shown on the left, a popup menu will appear, select the **Add Condition** menu option.



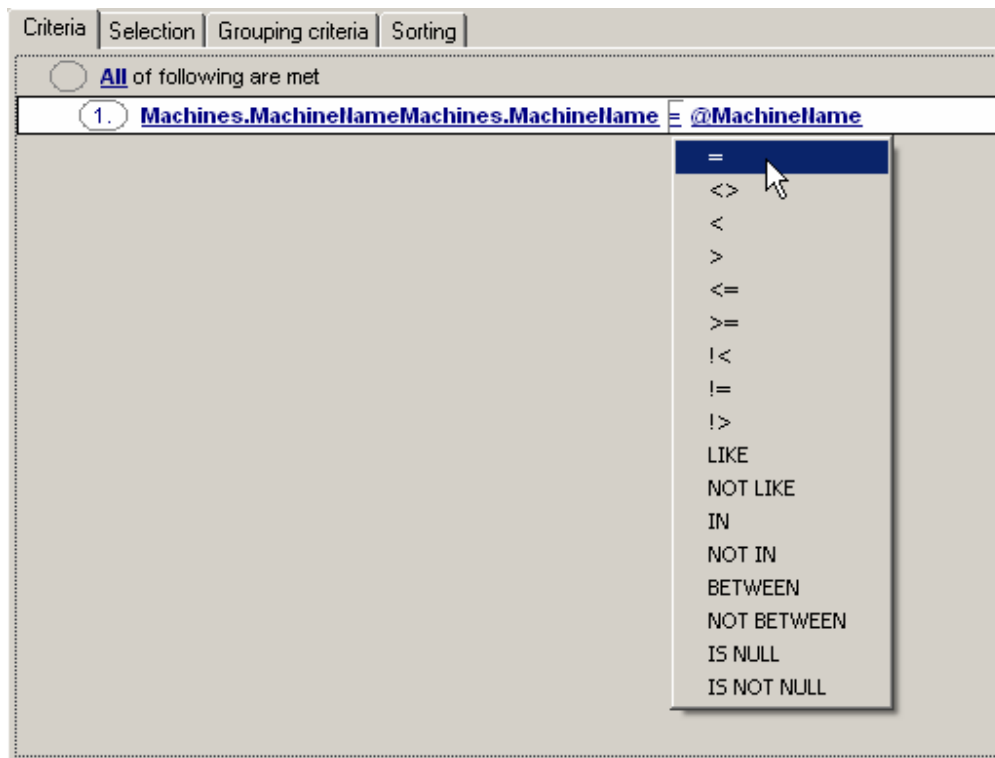
13. New condition will be added to the condition area Click the left side of the new condition to add the attribute to it.



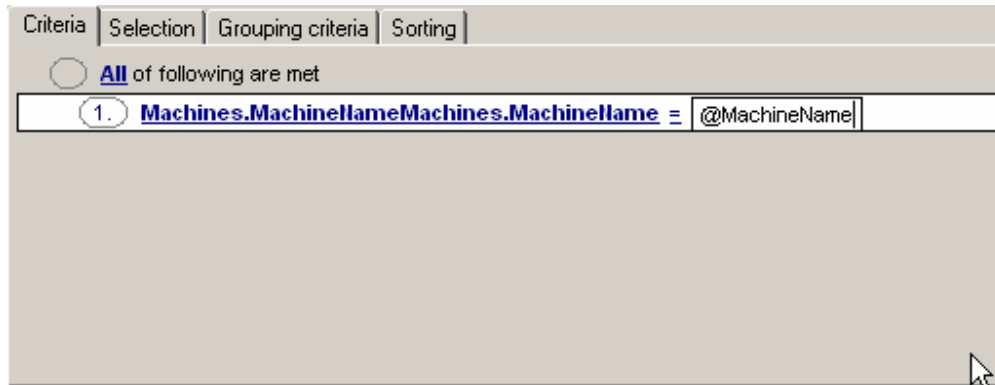
14. You can either type the field name in the textbox or you can press **Shift+ Enter** Key, a popup tree will appear showing the Tables and their attributes you can select the required attribute from the Popup Table Tree.



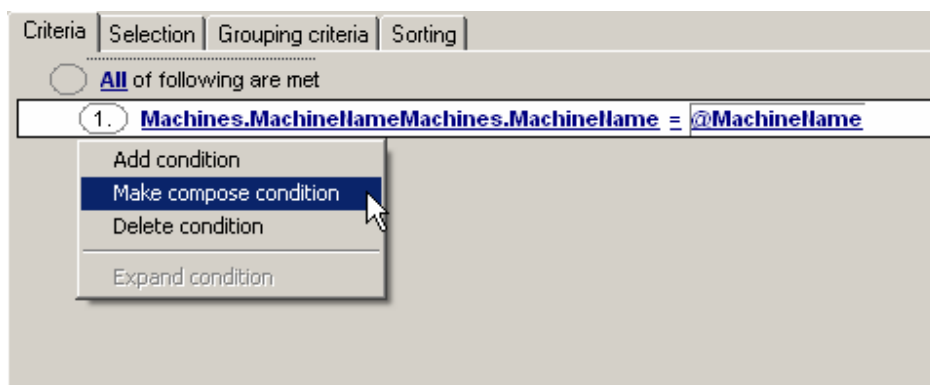
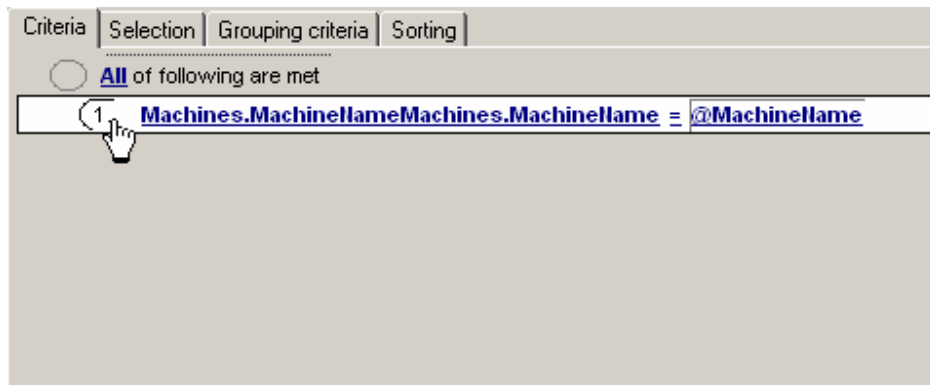
15. Now click Evaluation statement a popup menu will appear select the required evaluation statement from the popup menu.



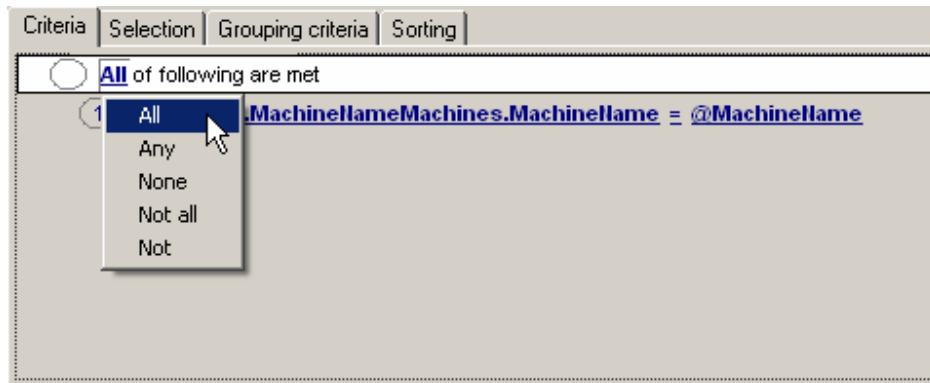
16. Click the right side of the new condition to add the other attribute to it.



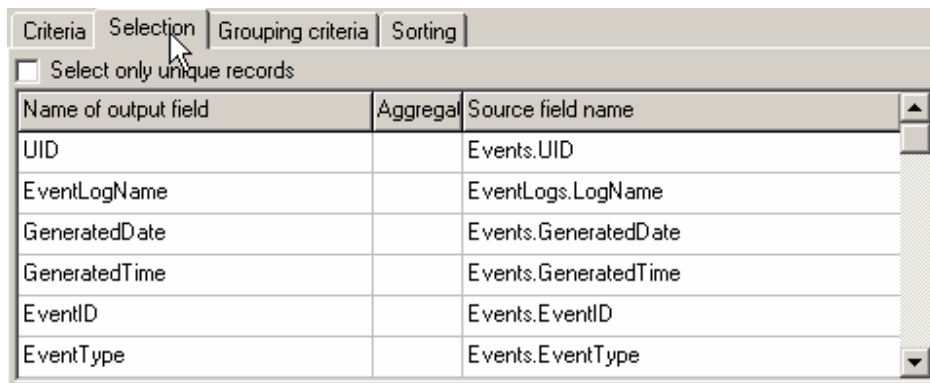
17. To make a Composite condition click the Circle shown on the left of the condition that you want to make the composite condition. A popup menu will appear now select the **Make Composite Condition** from the popup menu.



18. You can specify the evaluation criteria for the composite condition, to do so click the **Evaluation Statement** in the composite condition, a pop up menu will appear select the required condition from the pop up menu by default it will be set to **ALL** which means that all of the sub conditions must be true to continue in a particular composite condition.



19. Click the **Selection Tab** shown on the right of the **Criteria Tab** to specify a selection condition.



20. You will see three columns here. First columns shows the **Name of the Output Field**, second column will show the **Aggregate** function and third column will show the **Source Field Name**.

21. Double click the **Name of the Output Field** column and type the Name of the output field.

Name of output field	Aggregat	Source field name
UID		Events.UID
EventLogName		EventLogs.LogName
GeneratedDate		Events.GeneratedDate
GeneratedTime		Events.GeneratedTime
EventID		Events.EventID
EventType		Events.EventType

22. Double click the **Aggregate** column to select the required aggregate function from the dropdown list.

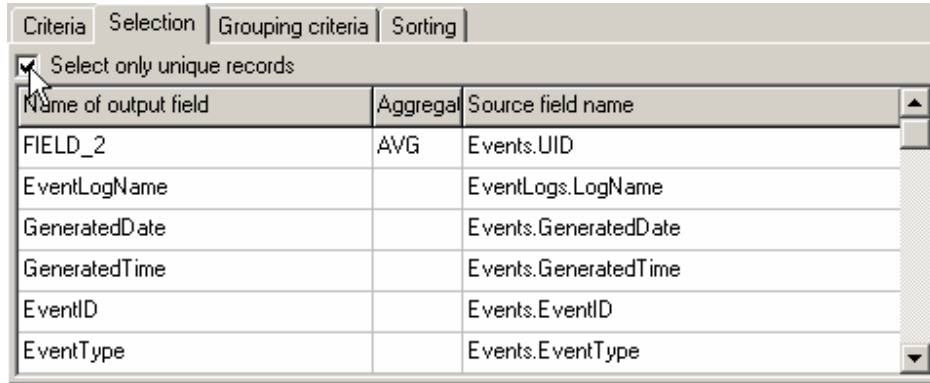
Name of output field	Aggregat	Source field name
UID		Events.UID
EventLogName	AVG	EventLogs.LogName
GeneratedDate		Events.GeneratedDate
GeneratedTime		Events.GeneratedTime
EventID		Events.EventID
EventType		Events.EventType

23. Double click the **Source Field Name** and select the source field from the source field dropdown list.

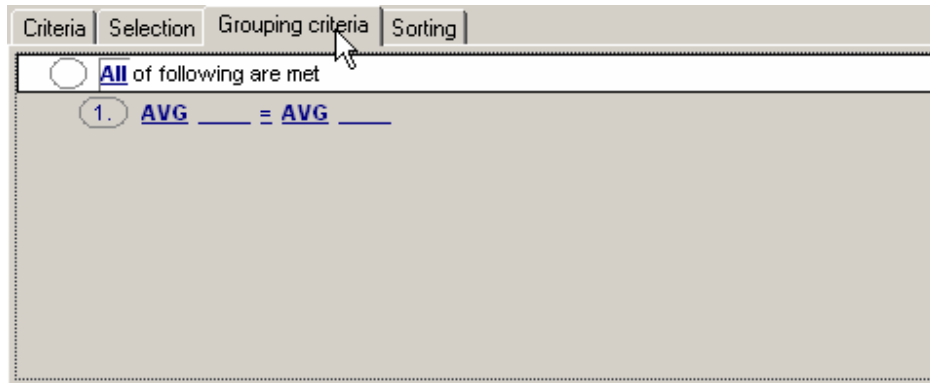
Name of output field	Aggregat	Source field name
FIELD_2	AVG	Events.UID
EventLogName		Events.UID
GeneratedDate		Events.EventLogUID
GeneratedTime		Events.MachineUID
EventID		Events.GeneratedDate
EventType		Events.GeneratedTime
		Events.EventID
		Events.EventType
		Events.EventCategory

24. Continue steps 16, 17 and 18 to add more selection conditions.

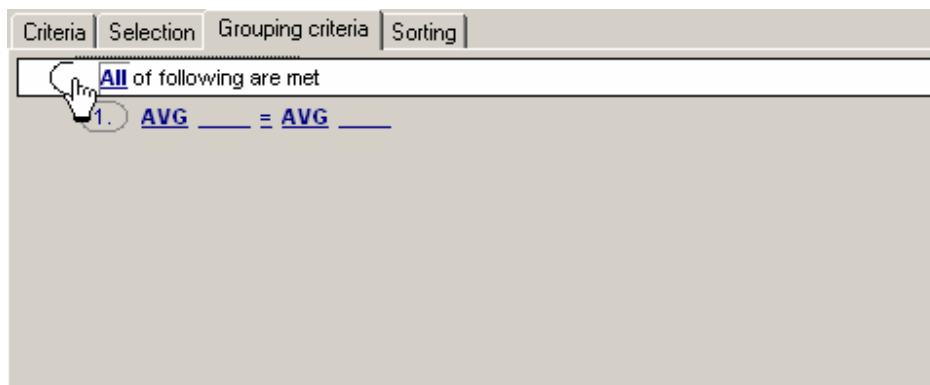
25. To select only unique records check the **Select Only Unique Records** checkbox.

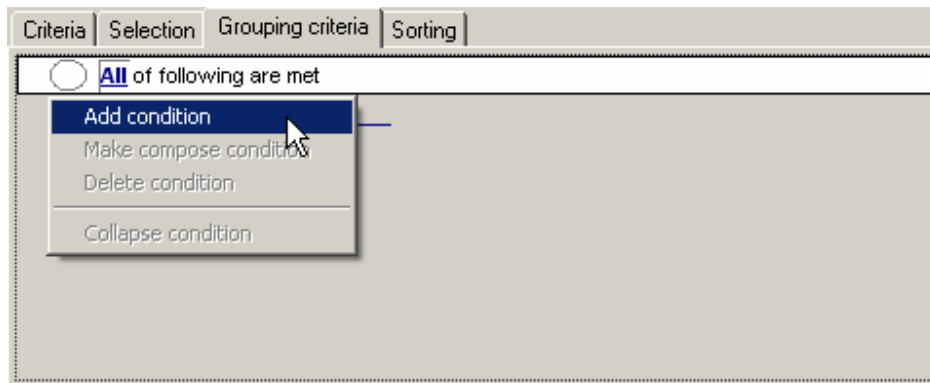


26. Click on the **Grouping Criteria Tab** shown on the right of the **Selection Tab**.

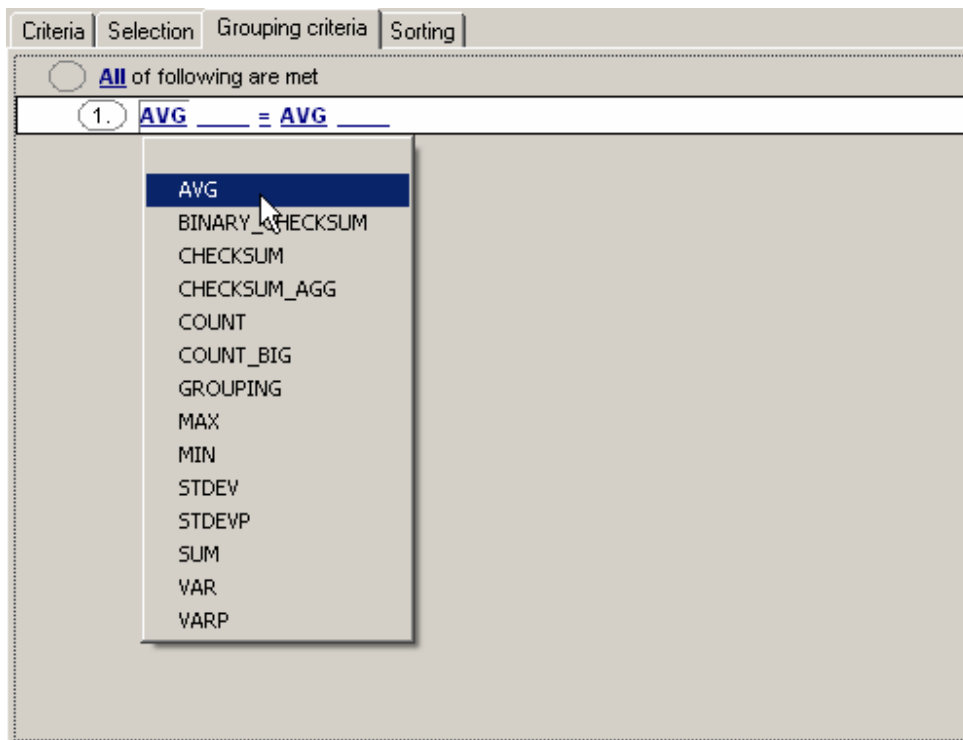


27. Click the Circle shown on the left, a popup menu will appear select **Add Condition** from the popup menu.

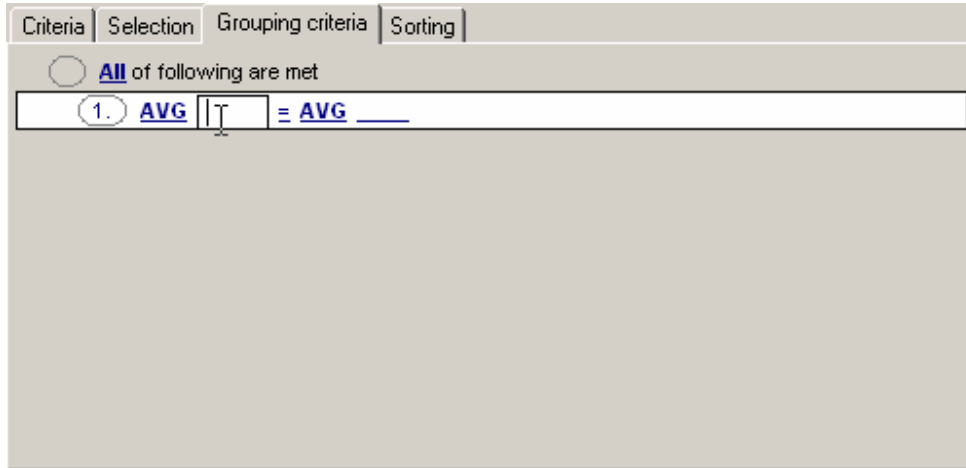




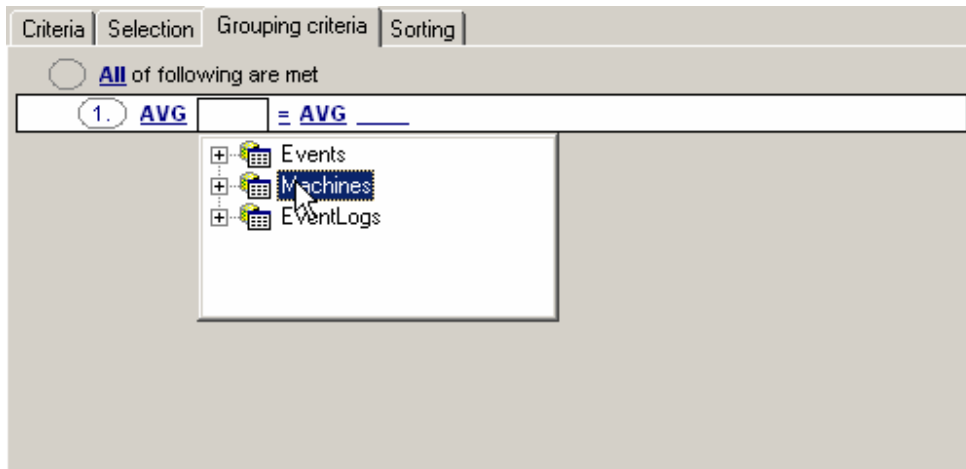
28. Click the first field, a popup menu will appear, select the required function from the popup menu.



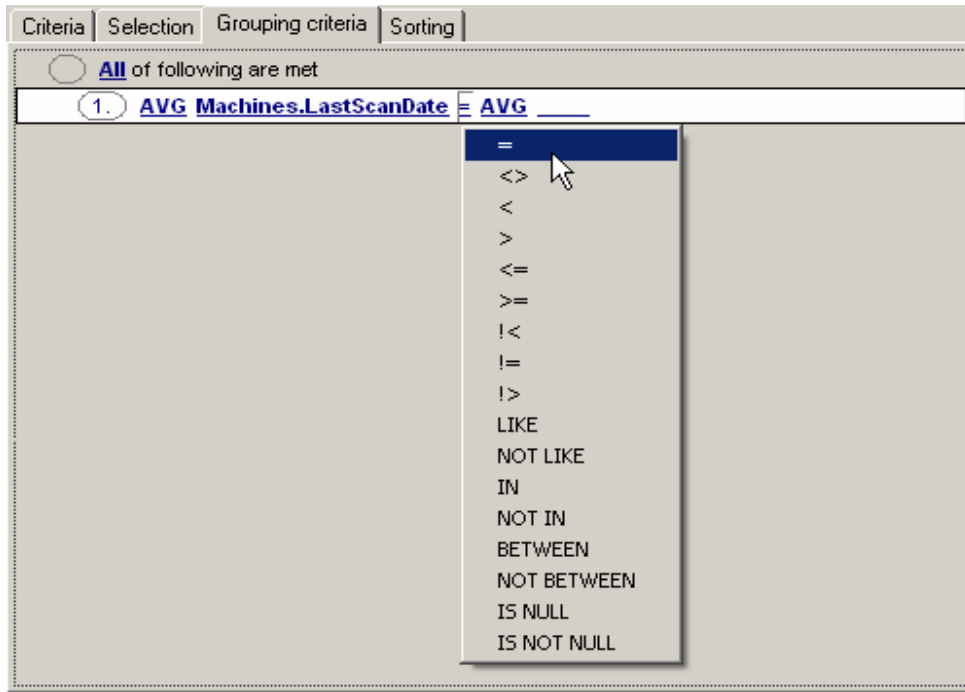
29. Now click the second field to add the attribute to it.



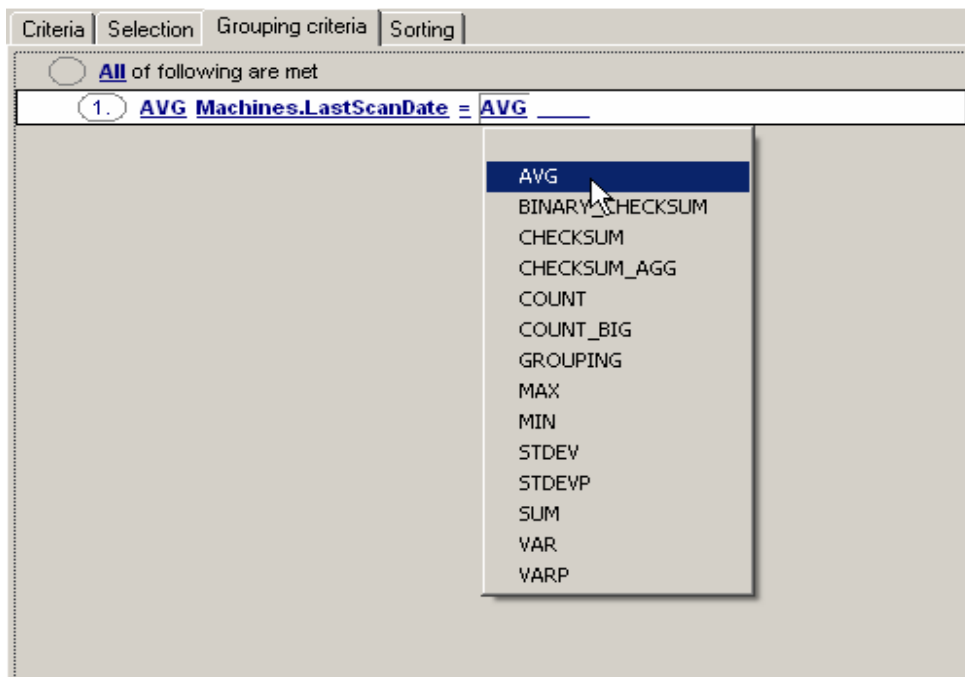
30. You can either type the field name in the textbox or you can press **Shift+ Enter** Key, a popup tree will appear showing the Tables and their attributes you can select the required attribute from the Popup Table Tree.



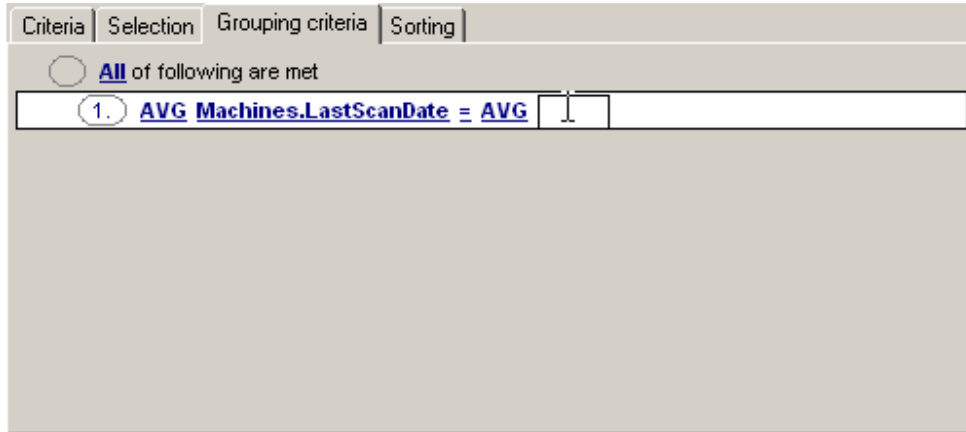
31. Click the **Evaluation condition**, a popup menu will appear, select the required evaluation condition from the popup menu.



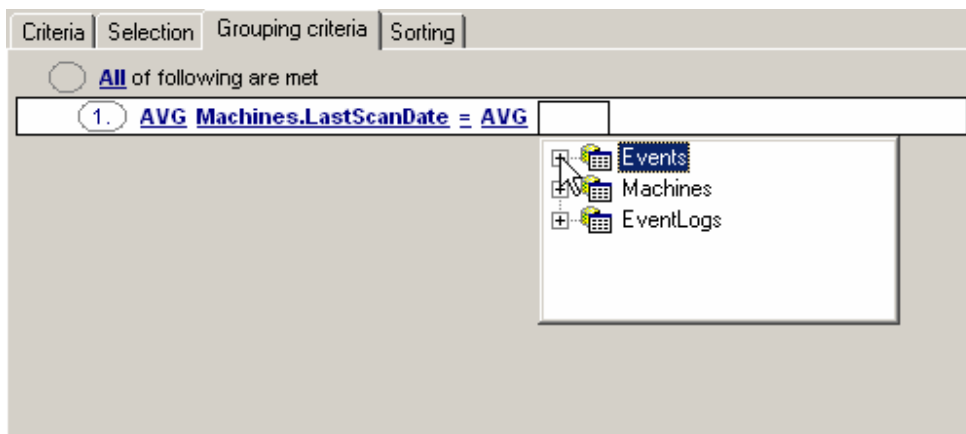
32. Click the next field, a popup menu will appear, select the required faction from the popup menu.



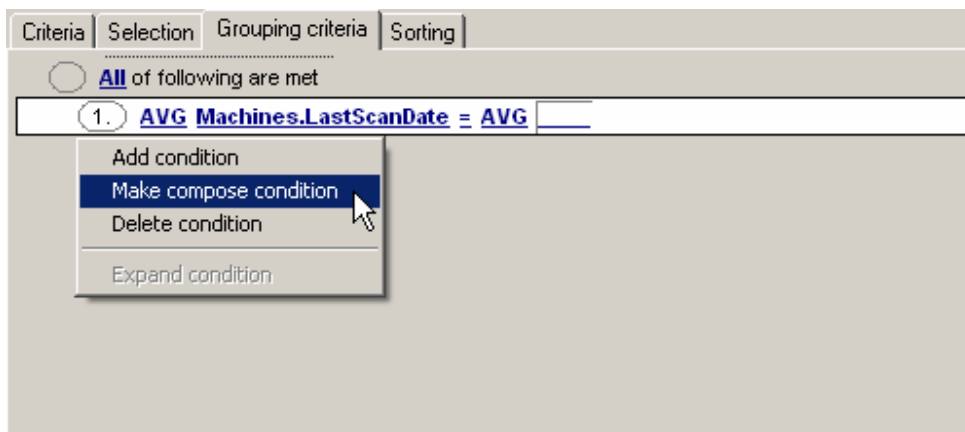
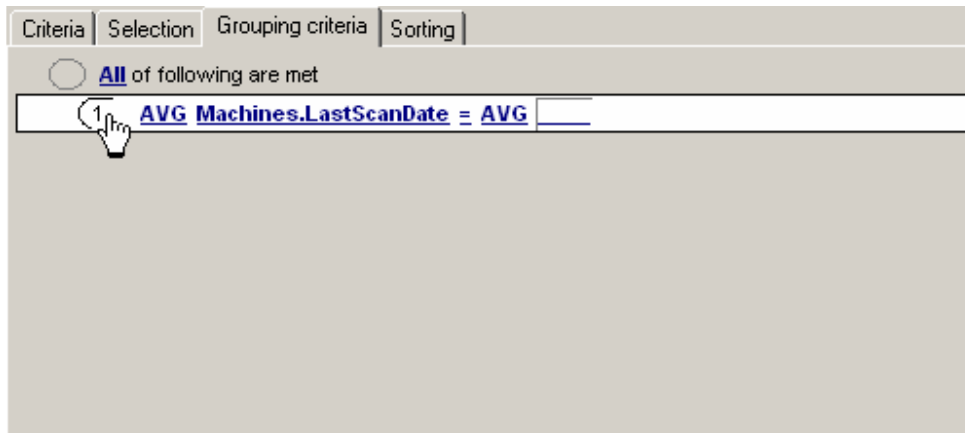
33. Now click the last field to add the attribute to it.



34. You can either type the field name in the textbox or you can press **Shift+ Enter** Key, a popup tree will appear showing the Tables and their attributes you can select the required attribute from the Popup Table Tree.



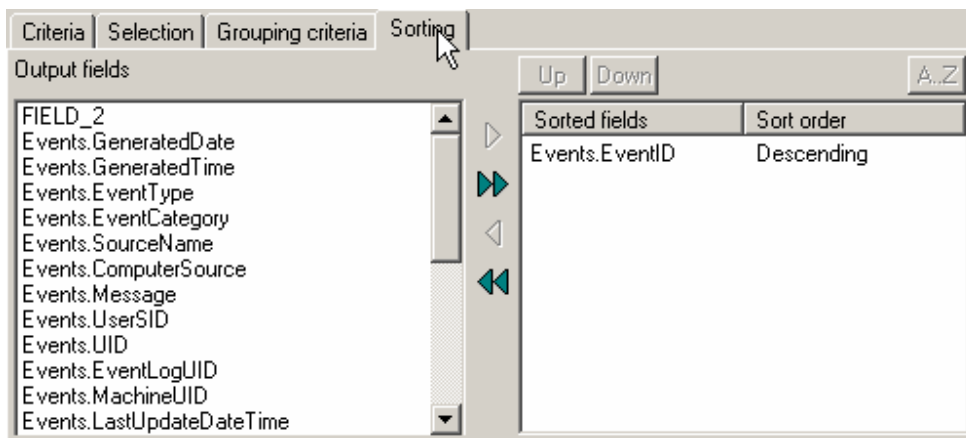
35. To make a **Composite condition** click the **Circle** shown on the left of the condition that you want to make the composite condition. A popup menu will appear now select the **Make Composite Condition** from the popup menu.



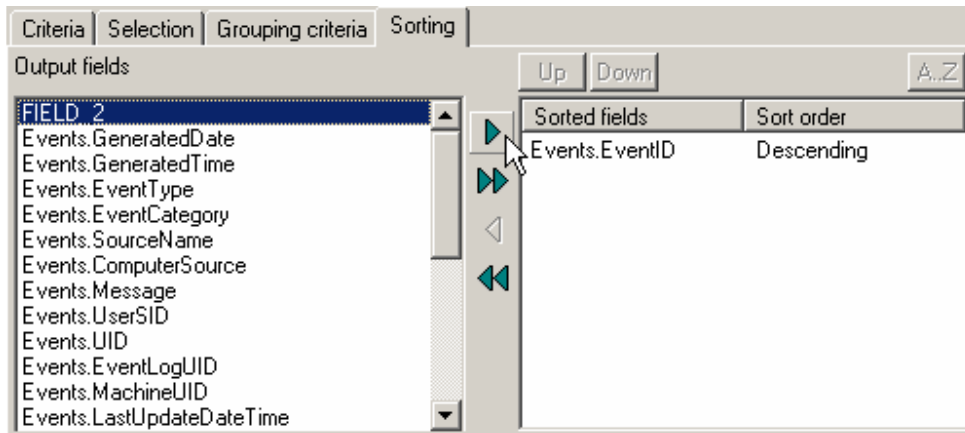
36. You can specify the evaluation criteria for the composite condition, to do so click the **Evaluation Statement** in the composite condition, a pop up menu will appear select the required condition from the pop up menu by default it will be set to **ALL** which means that all of the sub conditions must be true to continue in a particular composite condition.



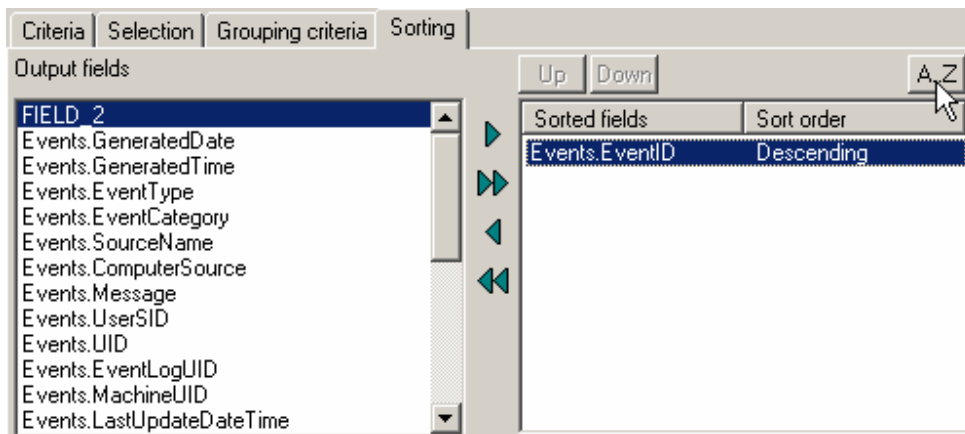
37. Click the **Sorting Tab** shown on the right of the **Grouping Criteria**.



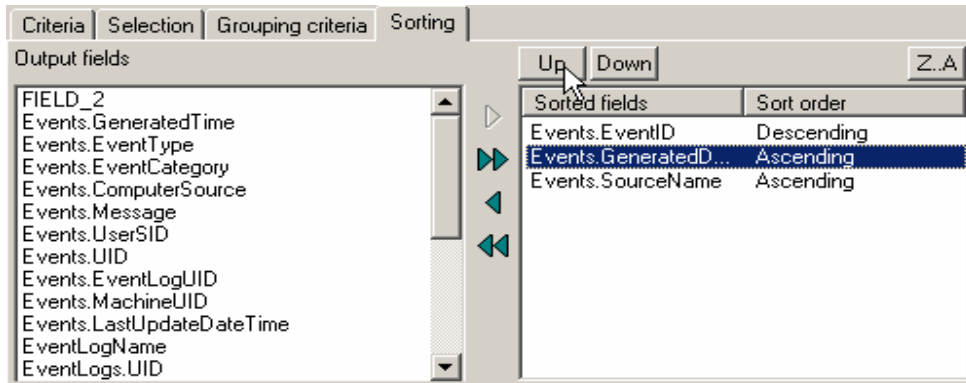
38. To add sorting criteria to the output field, select the required field from the **Output Fields** column and click > or double click the field name on the **Output Fields** columns, the field will be added to the column on the right.



39. To specify a sorting method select the column and click the **A-Z** button to sort in the ascending order or **Z-A** to sort in descending order.

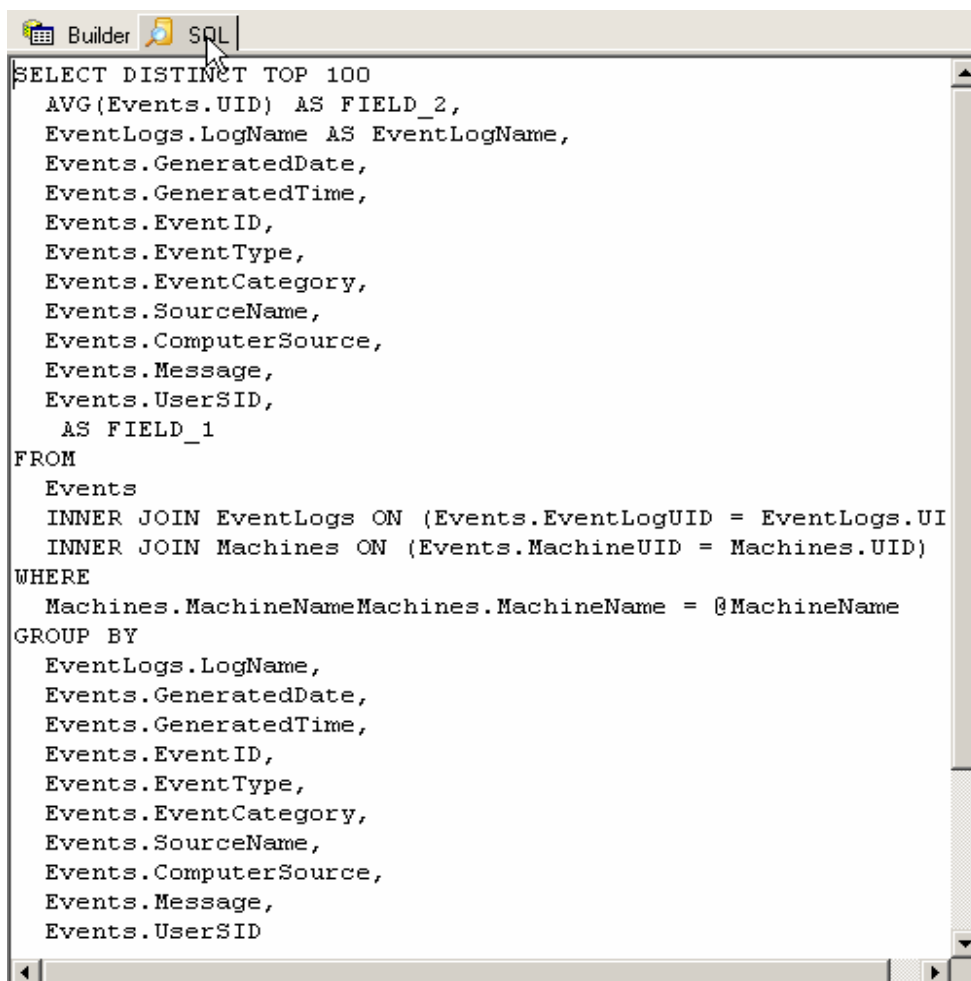


40. You can use **UP** and **DOWN** button to move a selected field up or down.



41. Repeat steps 31, 32, 33 to applying sorting criteria to more fields.

42. The SQL code will automatically generated to view the SQL code click the **SQL Tab**. Here you can edit the SQL code manually.



43. Click the **Execute Filter** button shown on the upper right corner of Filter Builder Tab.

