

Knowledgebase Article

Capturing Data with MSI Package Builder

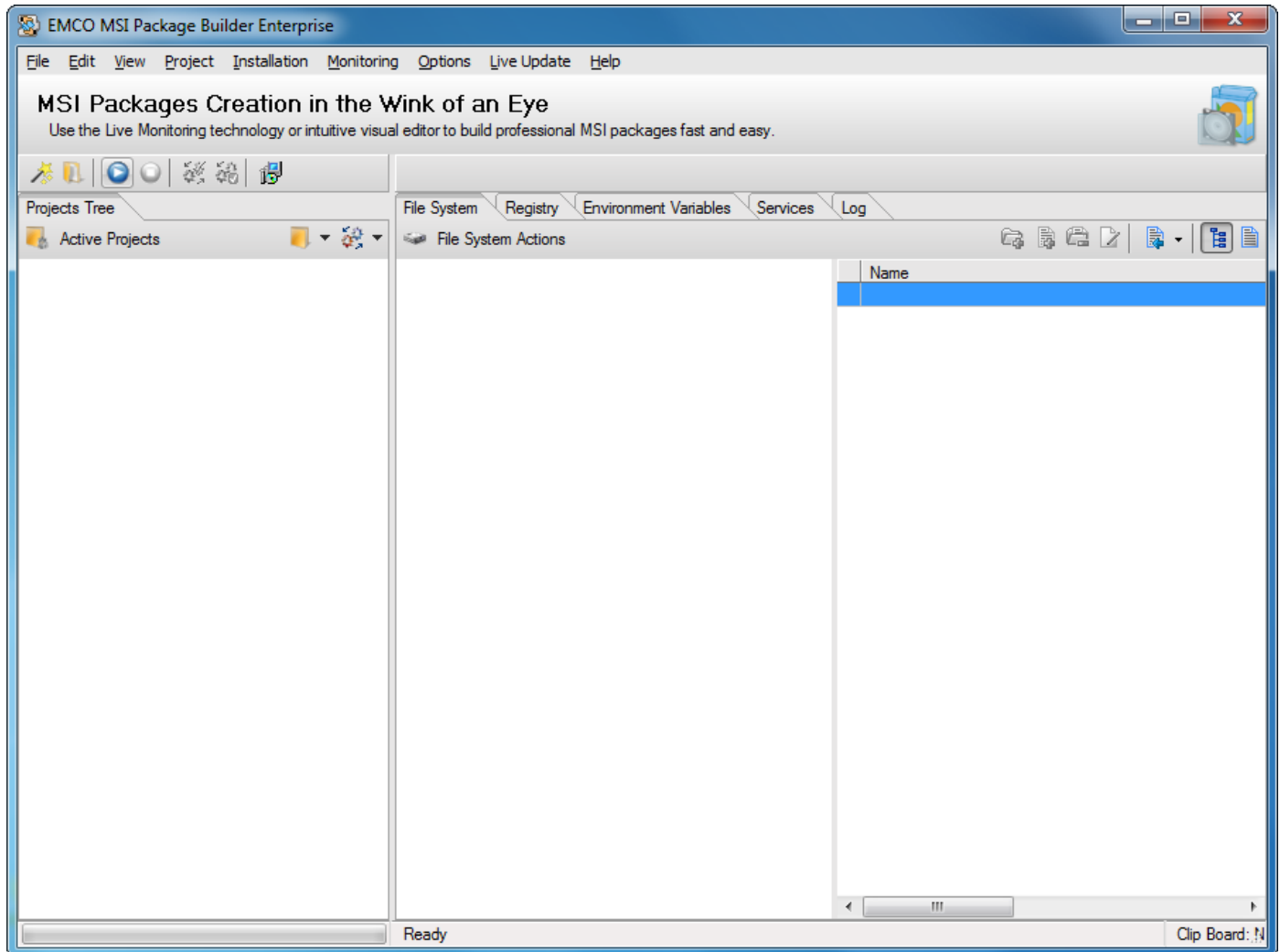
© Copyright 2001-2012 EMCO Software

Capturing Data with MSI Package Builder

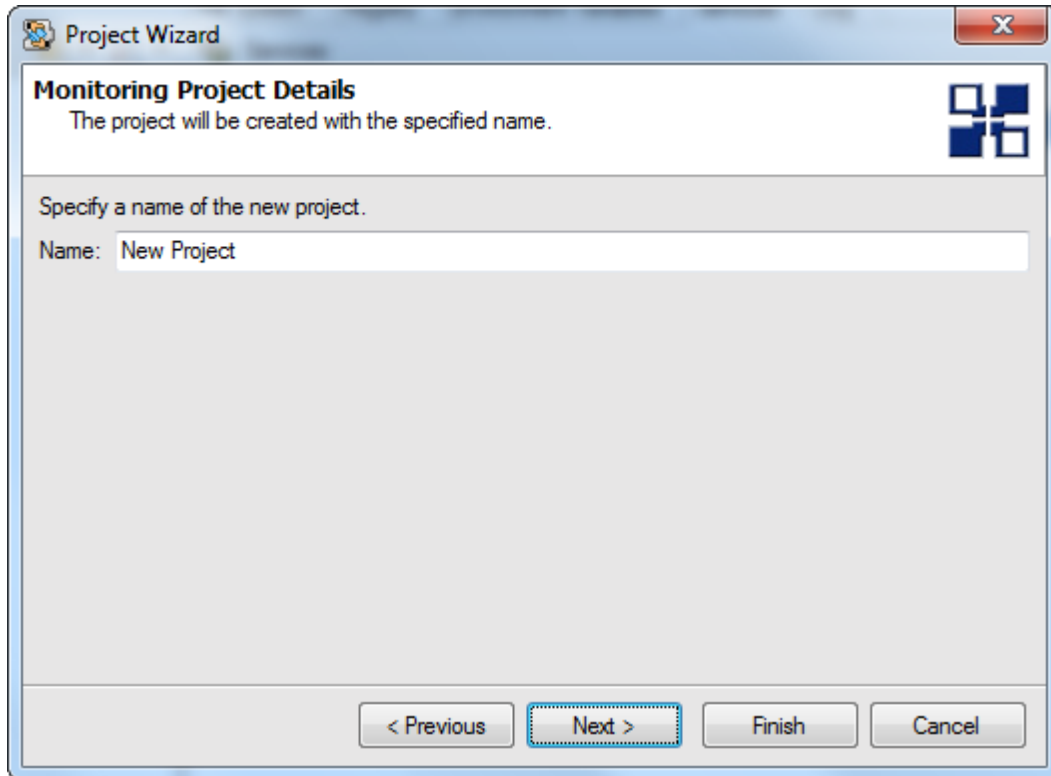
EMCO MSI Package Builder allows you to capture the installation files and registry setting from an existing MSI installation and build your custom installations based on it.

To capture an installation in EMCO MSI Package Builder, perform the following steps:

1. Click Start Monitor Icon shown button located in the tool bar.

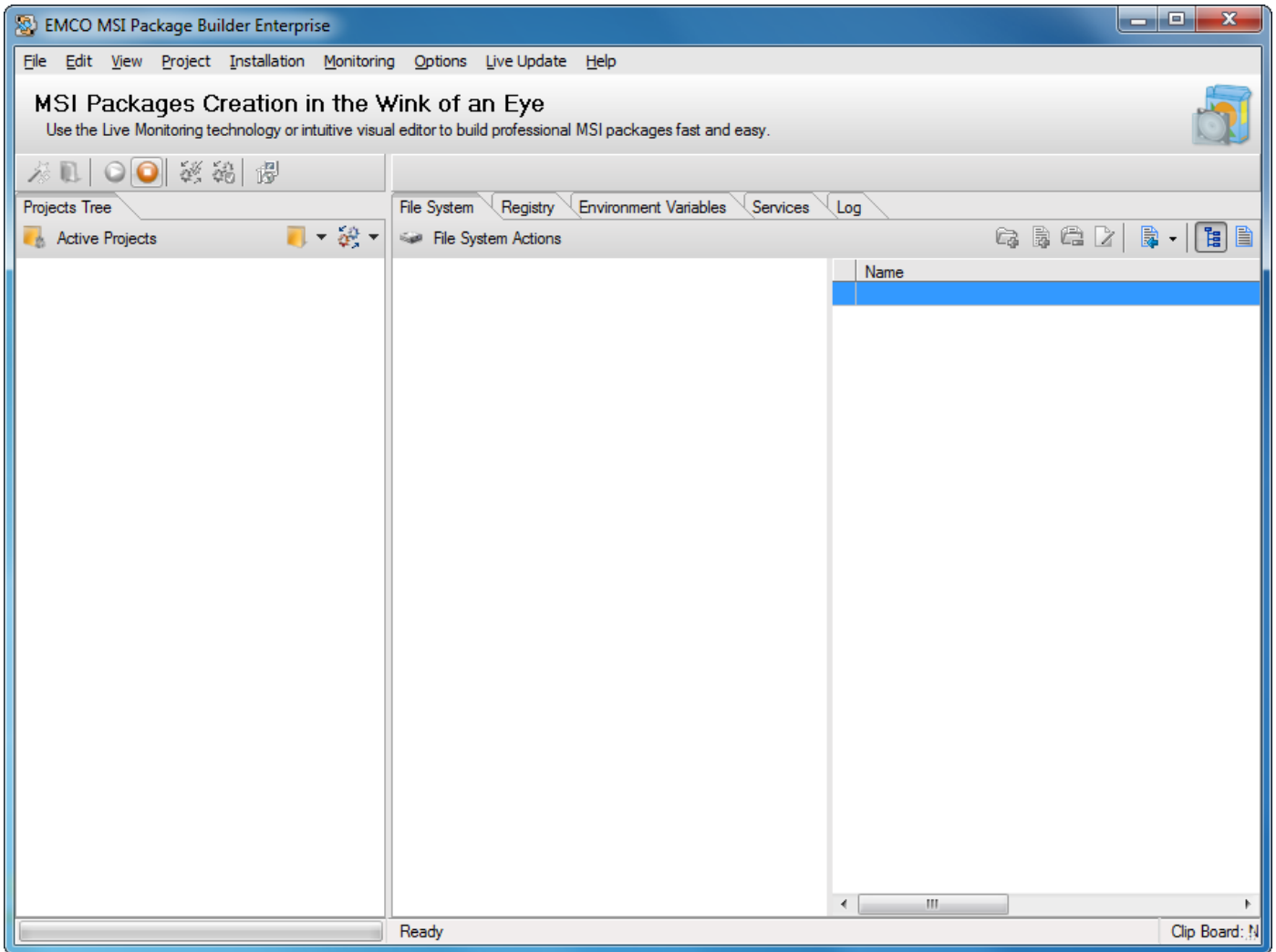


2. New Project Name dialog appears on the screen.
3. Type in the name of your new project in the New Name field.

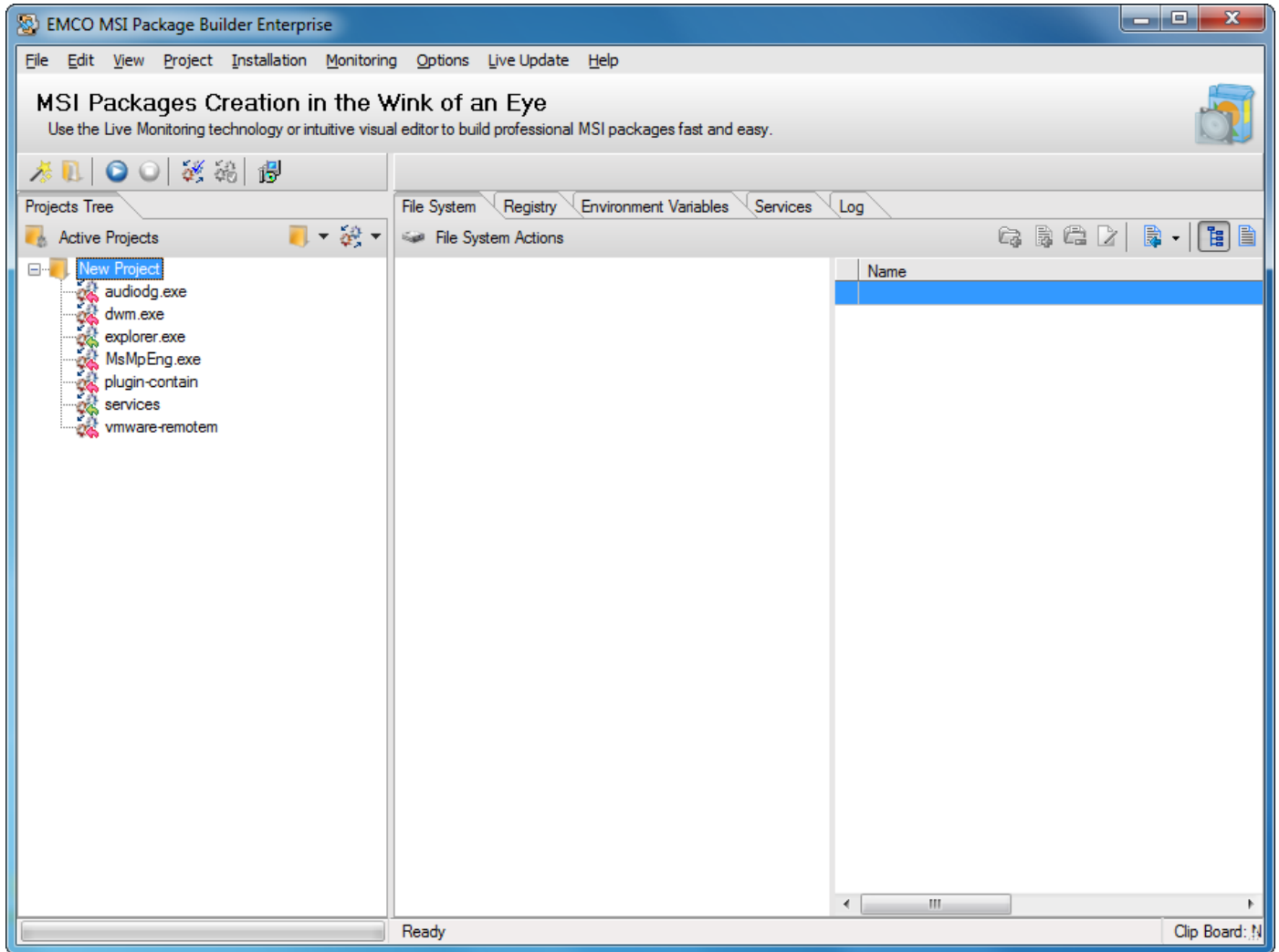


4. Press Ok button.

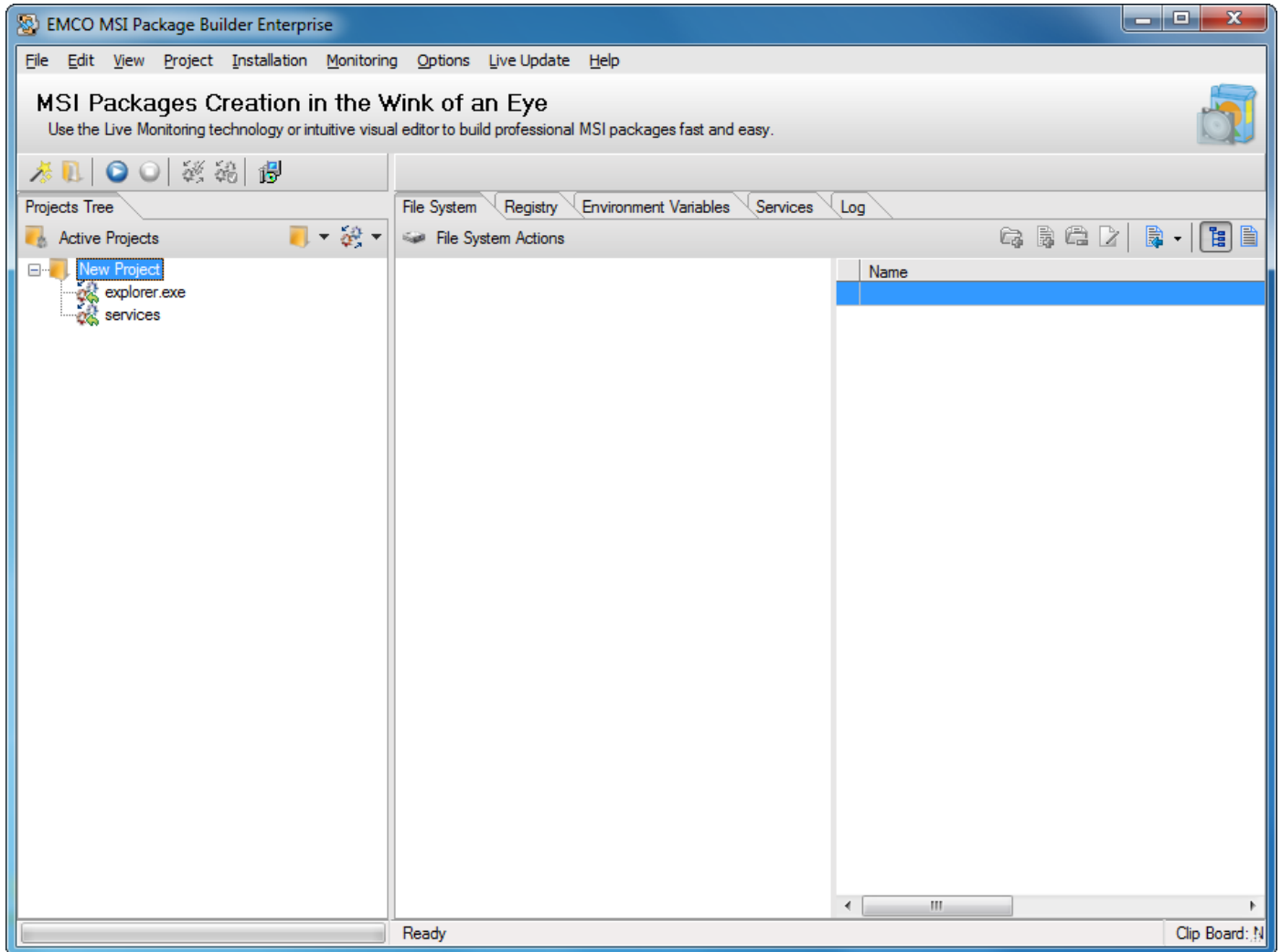
5. Run the installation you want to capture data from.
6. After you finish with your installation; click Stop Monitor button located in the tool bar.



7. The captured information will appear under the project node.



8. Keep the required items and remove the rest.



9. Now you have the required information about your installation.