

Knowledgebase Article

First start with MSI Package Builder

© Copyright 2001-2012 EMCO Software

Introduction to MSI Package Builder

EMCO MSI Package Builder is a gleaming addition to a Network Administrator's toolkit. It allows you to create custom installation MSI packages according to your requirements within a few minutes avoiding any complex scripting. All you need to know is the details on the installation that you want to bundle in a package.

EMCO MSI Package Builder provides a project based interface that makes it easy for you to manage different MSI installation projects and allows you to capture the existing installation file actions and build your customized installation based on it.

Below is the list the benefits that you get from this small yet very useful utility:

- ★ Very simple and easy to use interface
- ★ Visually create MSI installations
- ★ Create new installations or update existing MSI packages
- ★ Capture data from existing packages
- ★ Add files and folders to your installations
- ★ Create directories where required
- ★ Easy navigation for registry and file system items
- ★ Add and Update registry keys
- ★ Easily manage your MSI projects

Do you think your tool kit is complete without this tool?

Main Features of EMCO MSI Package Builder

- ✦ **Simple interface** - **EMCO MSI Package Builder** comes up with a very simple and easy to use interface that allows you to get started within a few minutes. You just need to be familiar with basic windows applications.
- ✦ **Visually create MSI installations** – **EMCO MSI Package Builder** gives you a probability to create your custom MSI installation files visually with just a few mouse clicks - no programming or scripting experience is required.
- ✦ **Create new installations or update existing MSI packages** – You can create new MSI installations using **EMCO MSI Package Builder** or you can update existing MSI installations and customize them according to your needs.
- ✦ **Capture data from existing packages** – **EMCO MSI Package Builder** allows you to capture data from an existing MSI file. So now you can capture data from an already created MSI file and use it in your new MSI files.
- ✦ **Add files to your installations** – **EMCO MSI Package Builder** allows you to easily add files to your MSI installations. All you have to do is locate the files that you want to add to your new MSI installation.
- ✦ **Add folders to your installations** – You can now easily add folders to your MSI installations in **EMCO MSI Package Builder**, just locate the directories that you want to add to your MIS installation and it will be added to your new installation.
- ✦ **Create directories where required** – **EMCO MSI Package Builder** allows you to easily create directories and sub directories where required.
- ✦ **Easy navigation for registry and file system items** – **EMCO MSI Package Builder** comes up with an easy navigation system that makes the whole process of MSI creation more logical and simple.
- ✦ **Add registry keys** – You can easily add registry keys and their values for your MSI installations.
- ✦ **Update registry keys** – You can easily update the already added registry keys in **EMCO MSI Package Builder**.
- ✦ **Easily manage your MSI projects** – **EMCO MSI Packages Builder** provides simple project management that allows you to manage your MSI installation projects more efficiently. Each MSI installation you create is treated as a separate project so that you get a more logical view.

EMCO MSI Package Builder System Requirements

The requirements to the system for normal operation of **EMCO MSI Package Builder** are listed below:

- ✦ Operating system Microsoft Windows 2000, Windows XP, Windows 2003, Windows 2003 x64, Windows Vista, Windows Vista x64, Microsoft Windows 2008, Microsoft Windows 2008 x64
- ✦ 1000 MHz processor
- ✦ 512 Mb of RAM (1024 Mb is recommended)
- ✦ 250 Mb of free space on hard disk

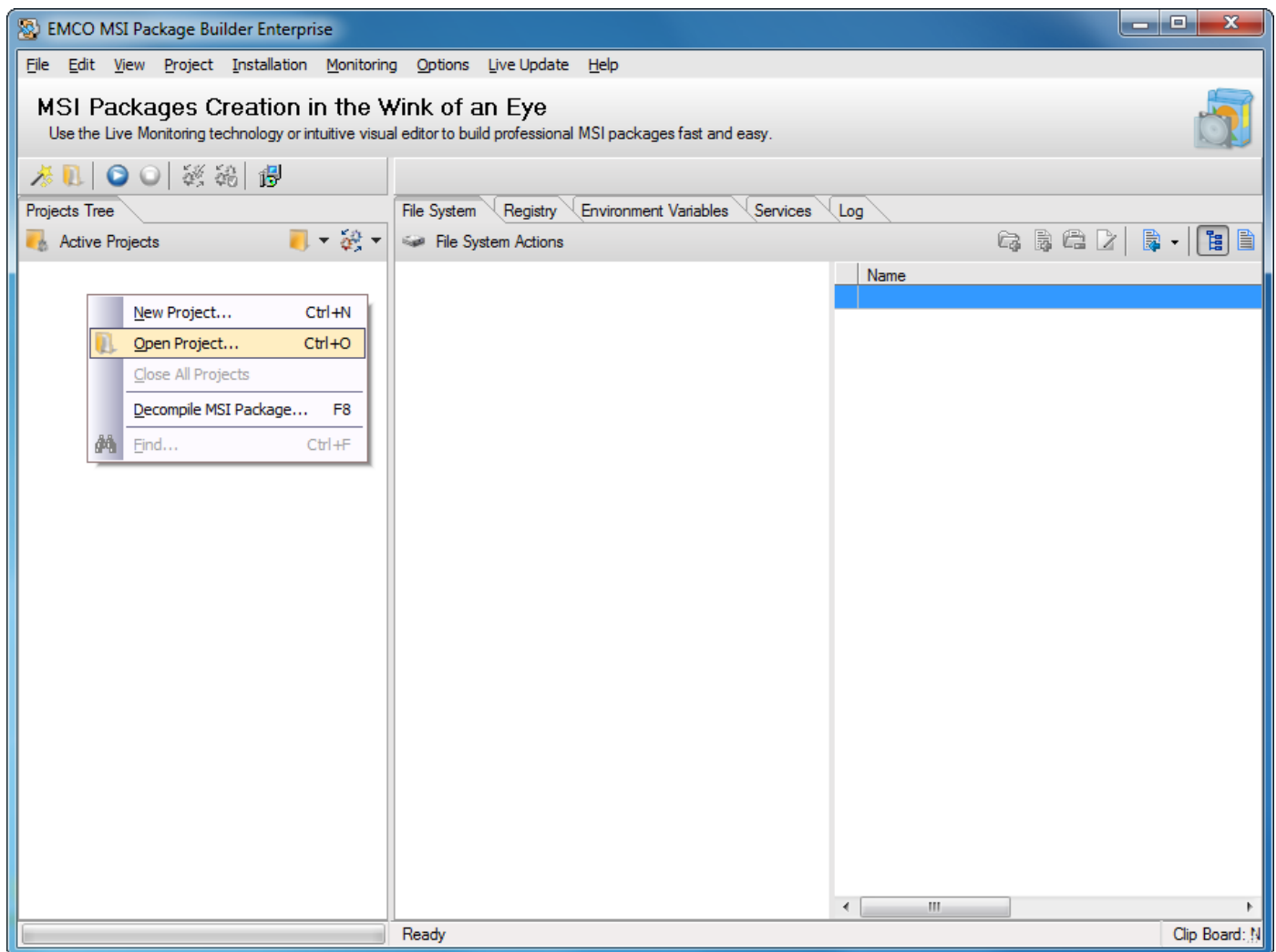
Project Actions

- ▲ Open Project
- ▲ Add New Project
- ▲ Rename Project
- ▲ Delete Project
- ▲ Close Project

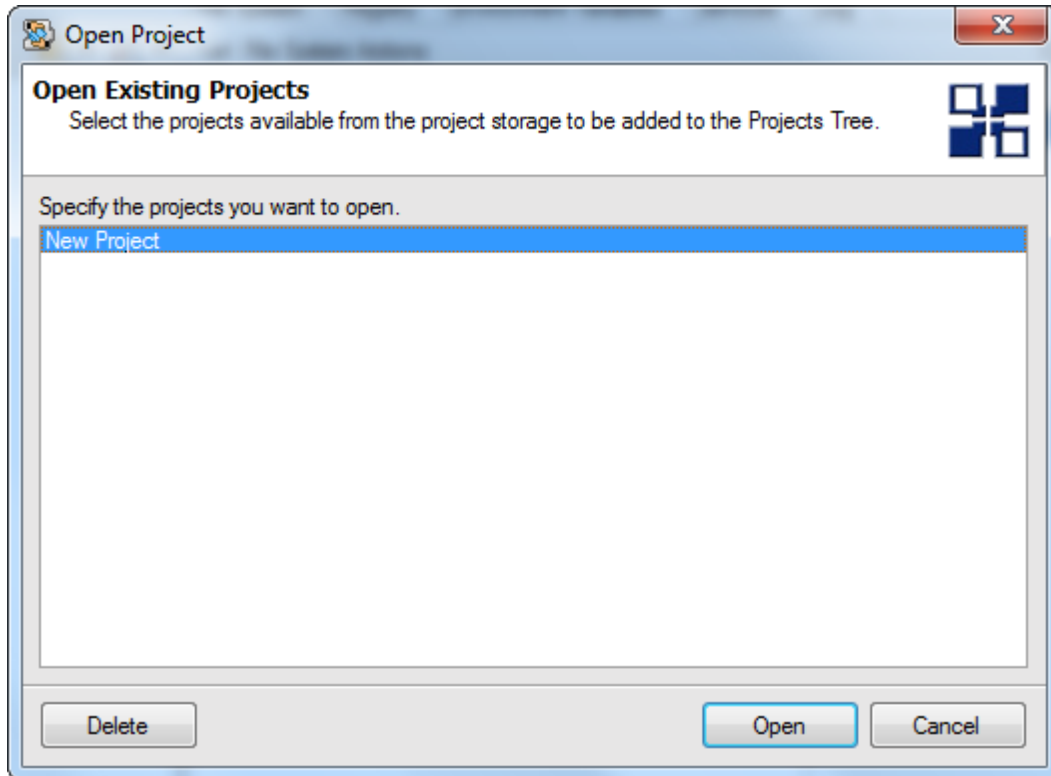
Open Project

To Open a project in EMCO MSI Package Builder perform the following steps:

1. 1. Click Open Project button located in the Projects Tree tool bar or select Open Project... menu item from the Project Tree viewer context menu or under File application menu.

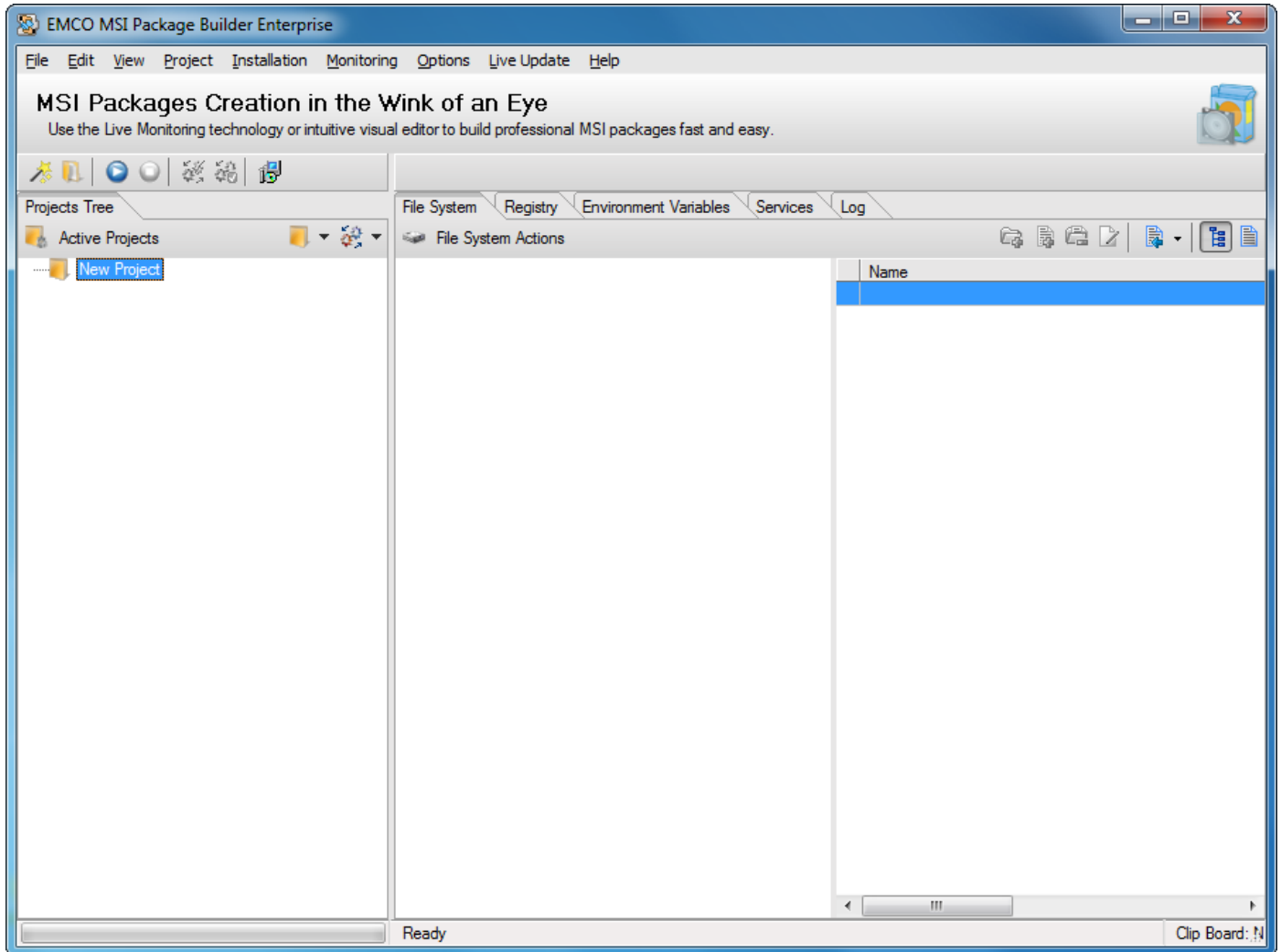


2. Open Project dialog appears on the screen.
3. Select the project you want to open from the projects list.



4. Press Ok button.

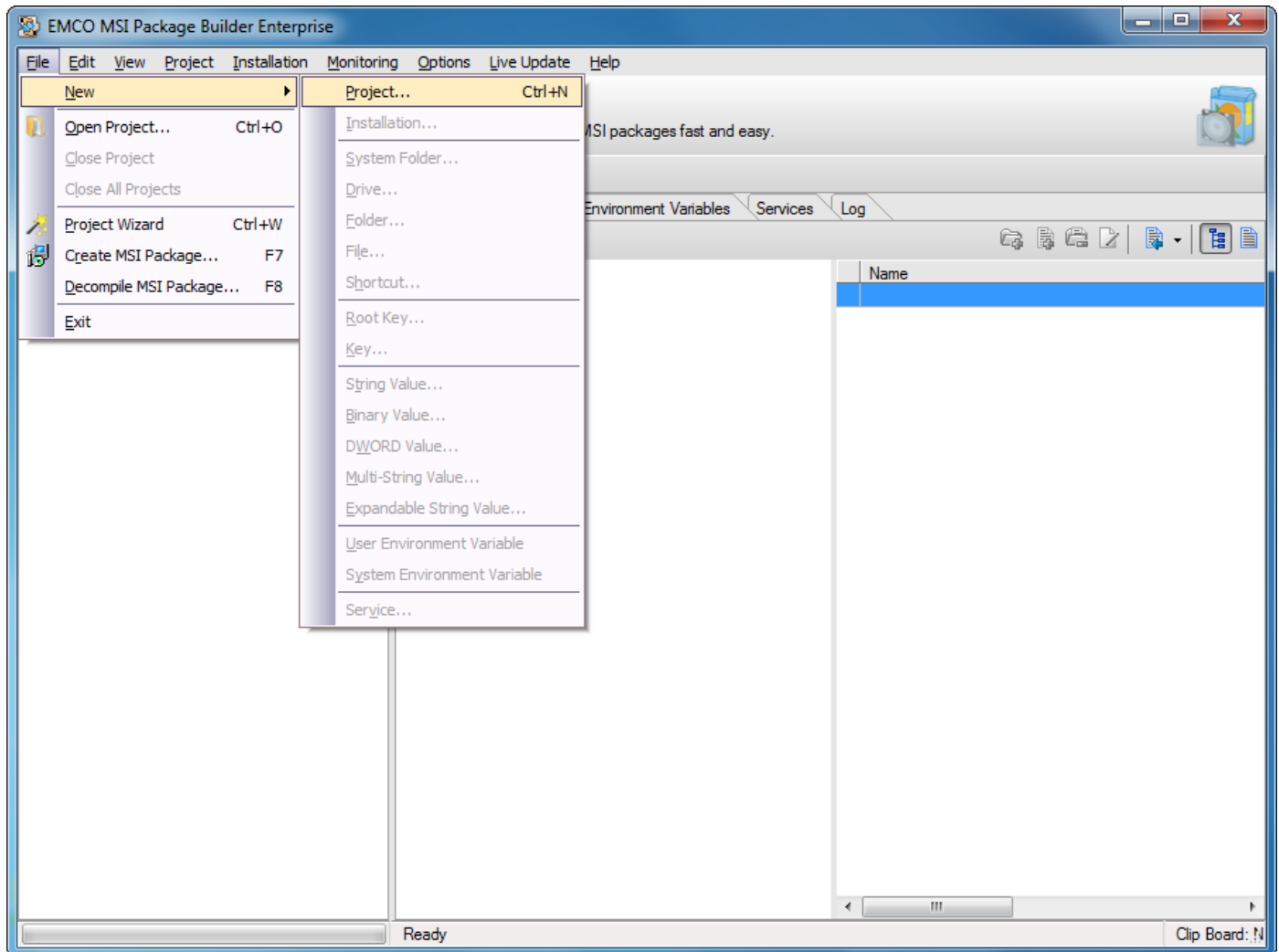
5. This will open the selected project.



Add New Project

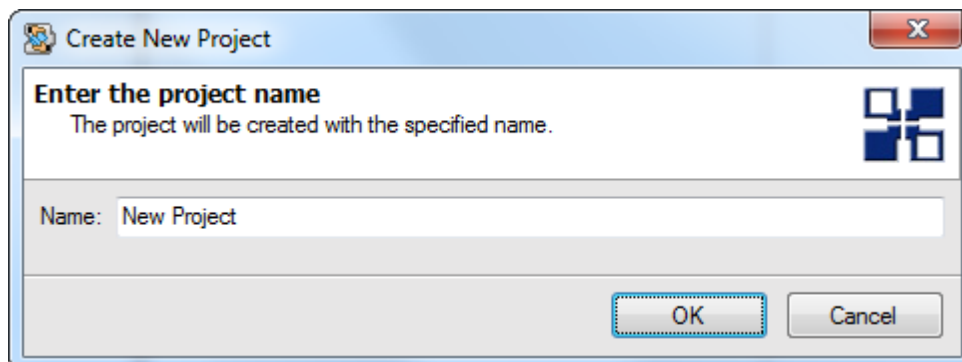
To add a new project in EMCO MSI Package Builder perform the following steps:

1. Right click the Projects Tree viewer part and select New Project from the pop-up menu.



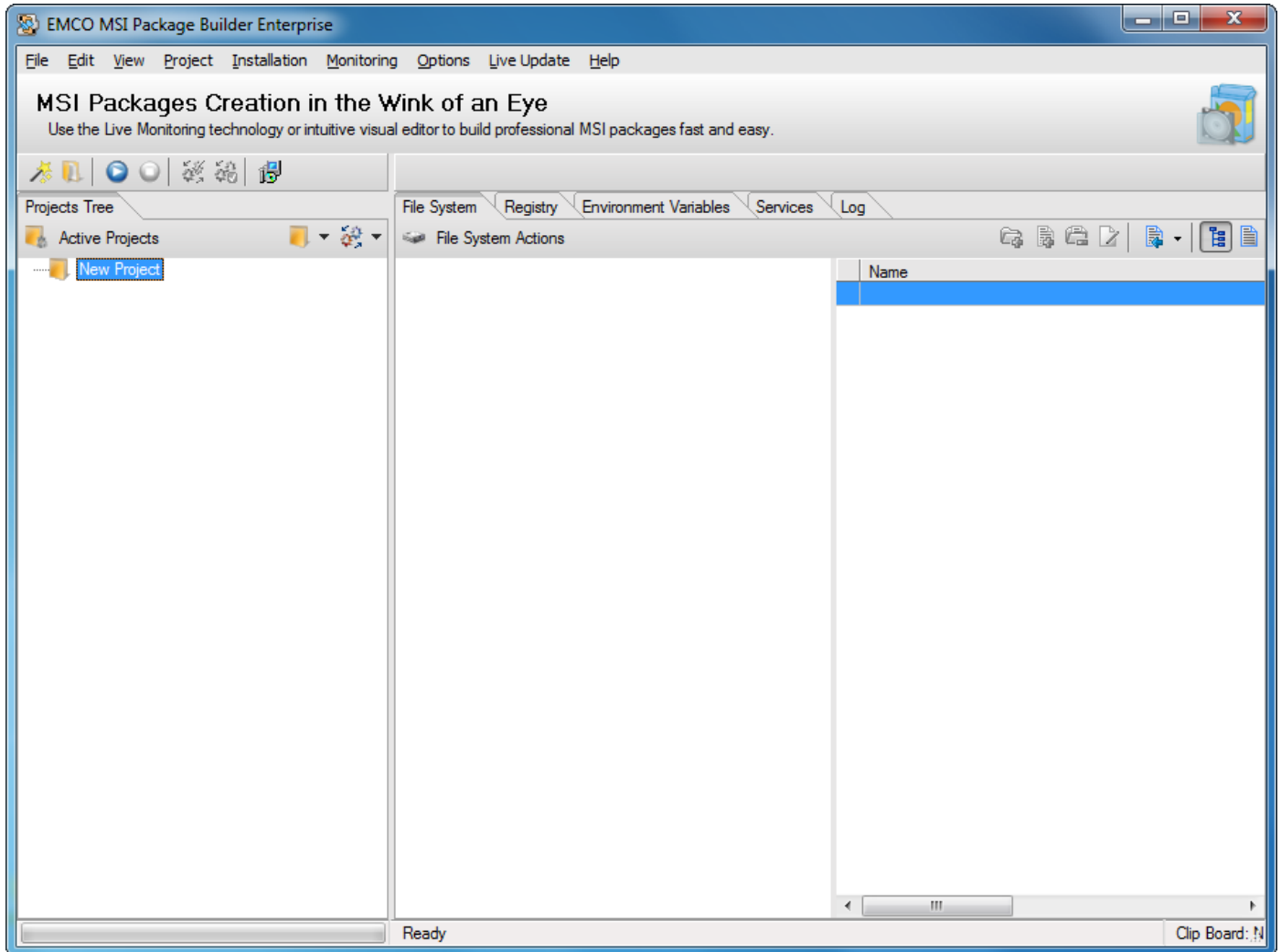
Alternately you can also press Ctrl + N keys combination.

2. Create New Project dialog appears on the screen.
3. Type a project name in the Name field.



4. Press Ok button.

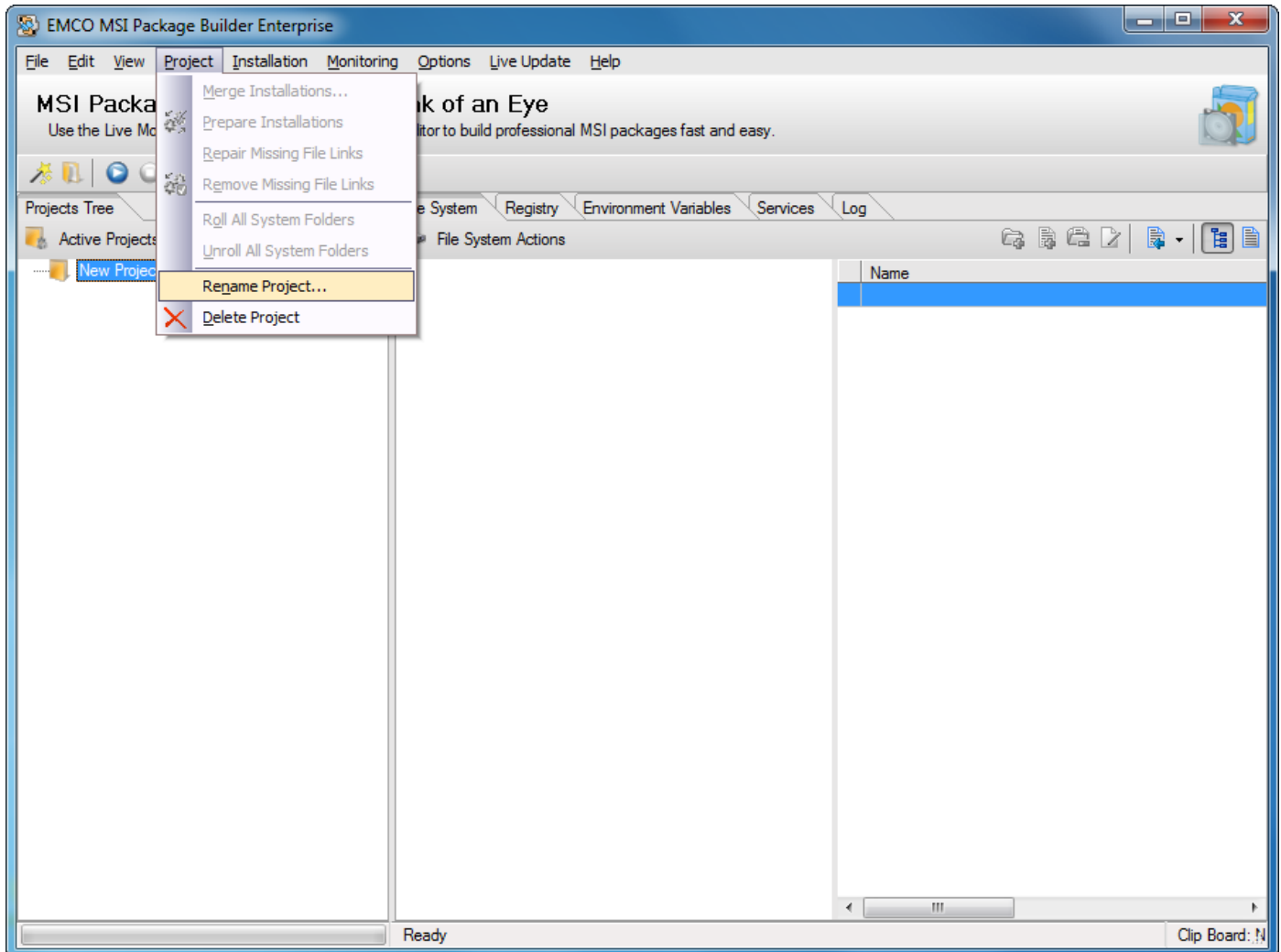
- This will create a new project and it will appear in the Projects Tree.



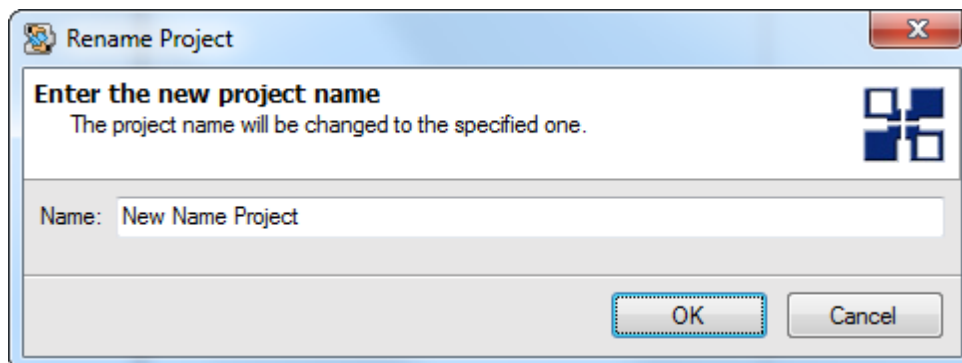
Rename Project

To rename a project in EMCO MSI Package Builder perform the following steps:

1. Select the project you want to rename in a Projects Tree.
2. Right click the project and select Rename Project from the pop-up menu or select Rename Project menu item under Project application menu.

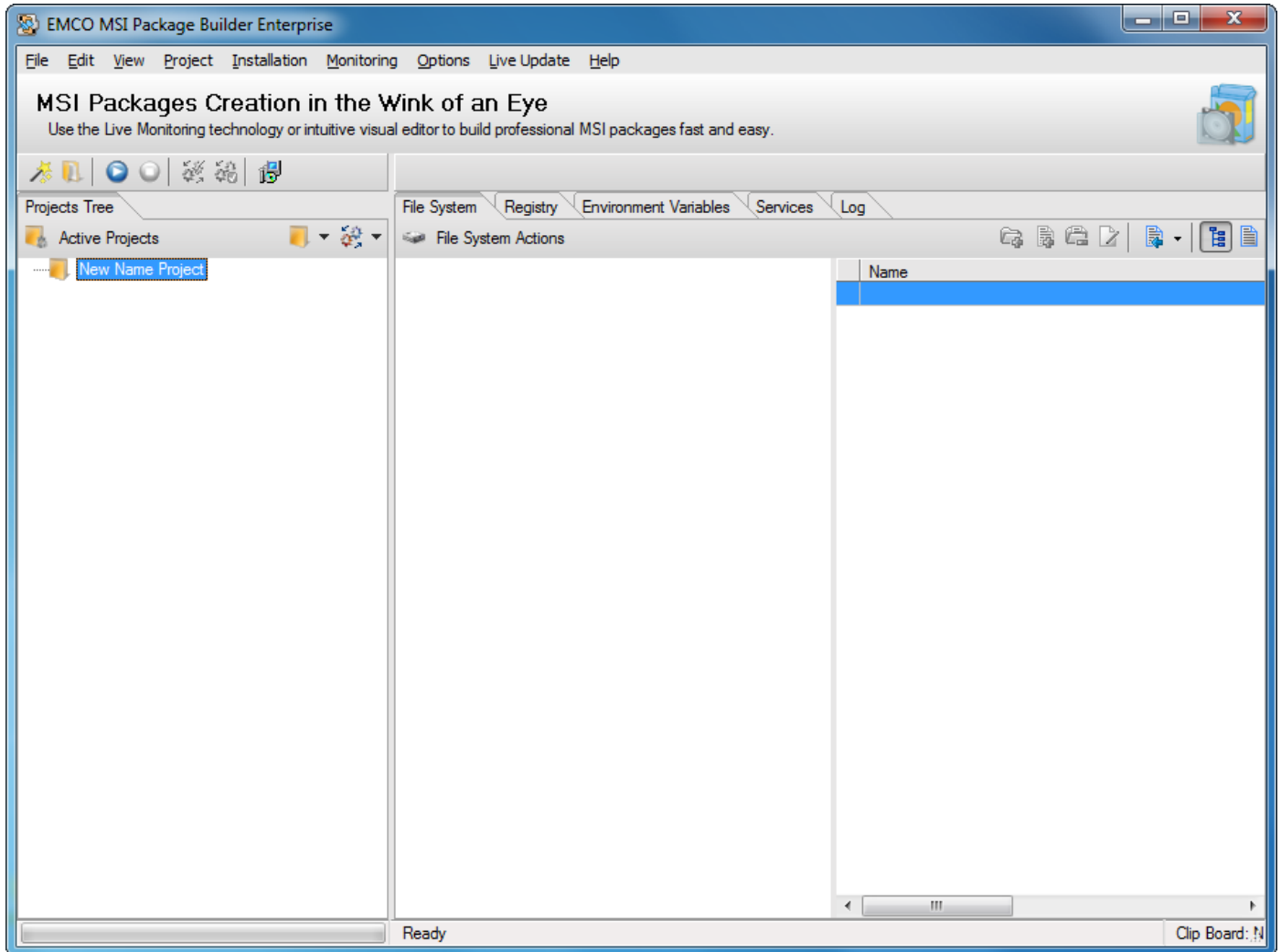


3. Rename Project dialog appears on the screen.
4. Type in new project name in the Name field.



5. Press Ok button.

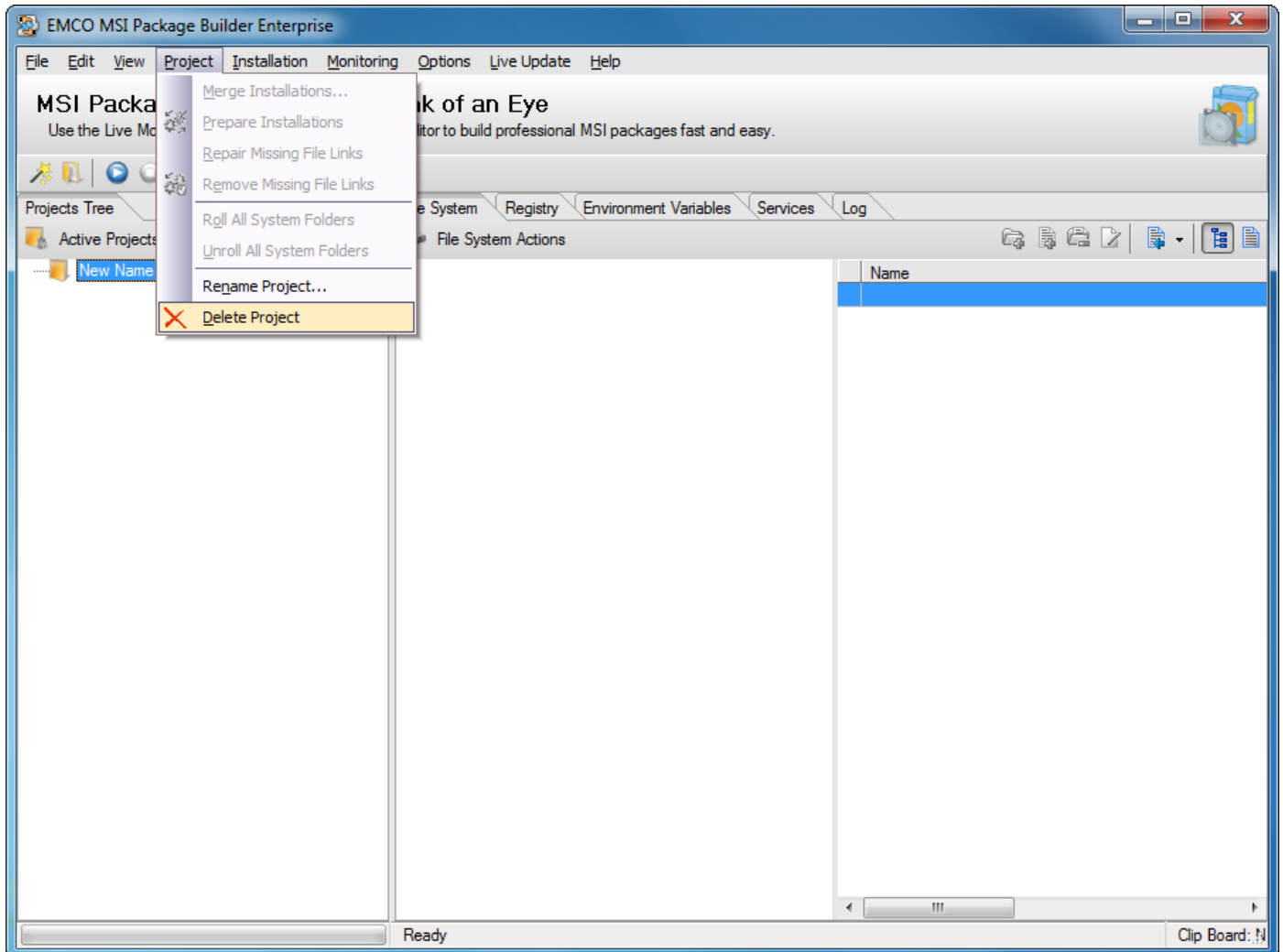
6. This will rename the selected project.



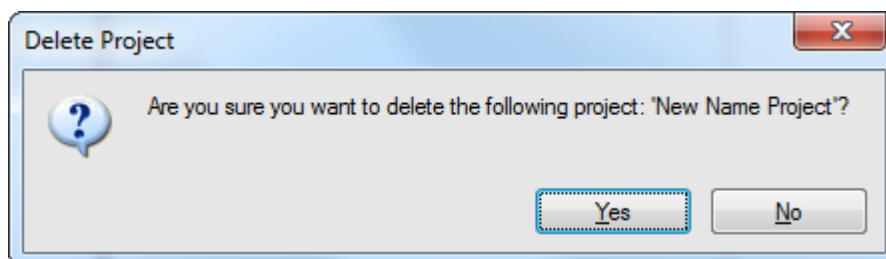
Delete Project

To delete a project in EMCO MSI Package Builder perform the following steps:

1. Select the project you want to delete in a Projects Tree.
2. Right click the project and select Delete Project from the pop-up menu or select Delete Project menu item under Project application menu.

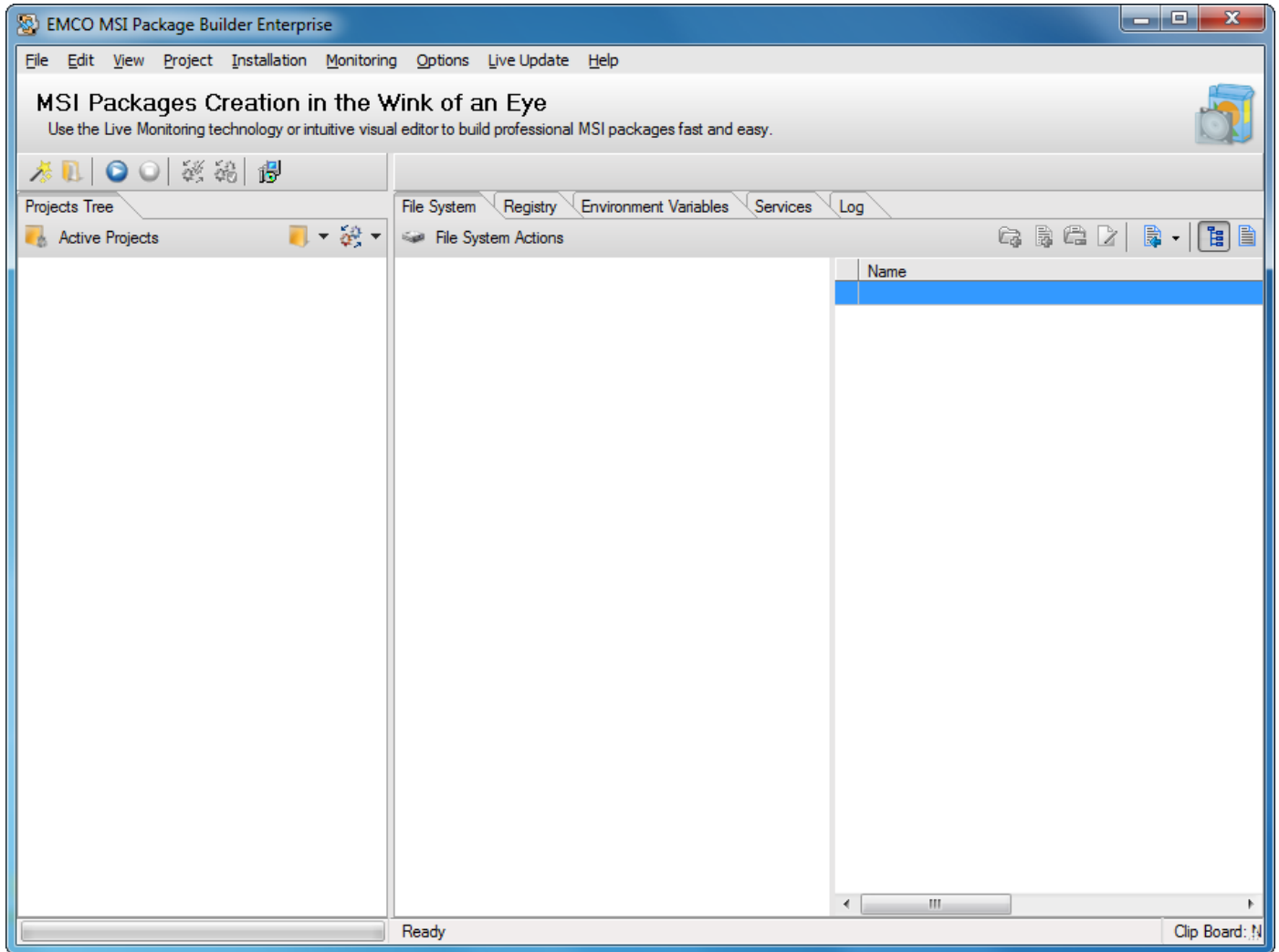


3. A confirmation dialog appears on the screen.



4. Press Yes button.

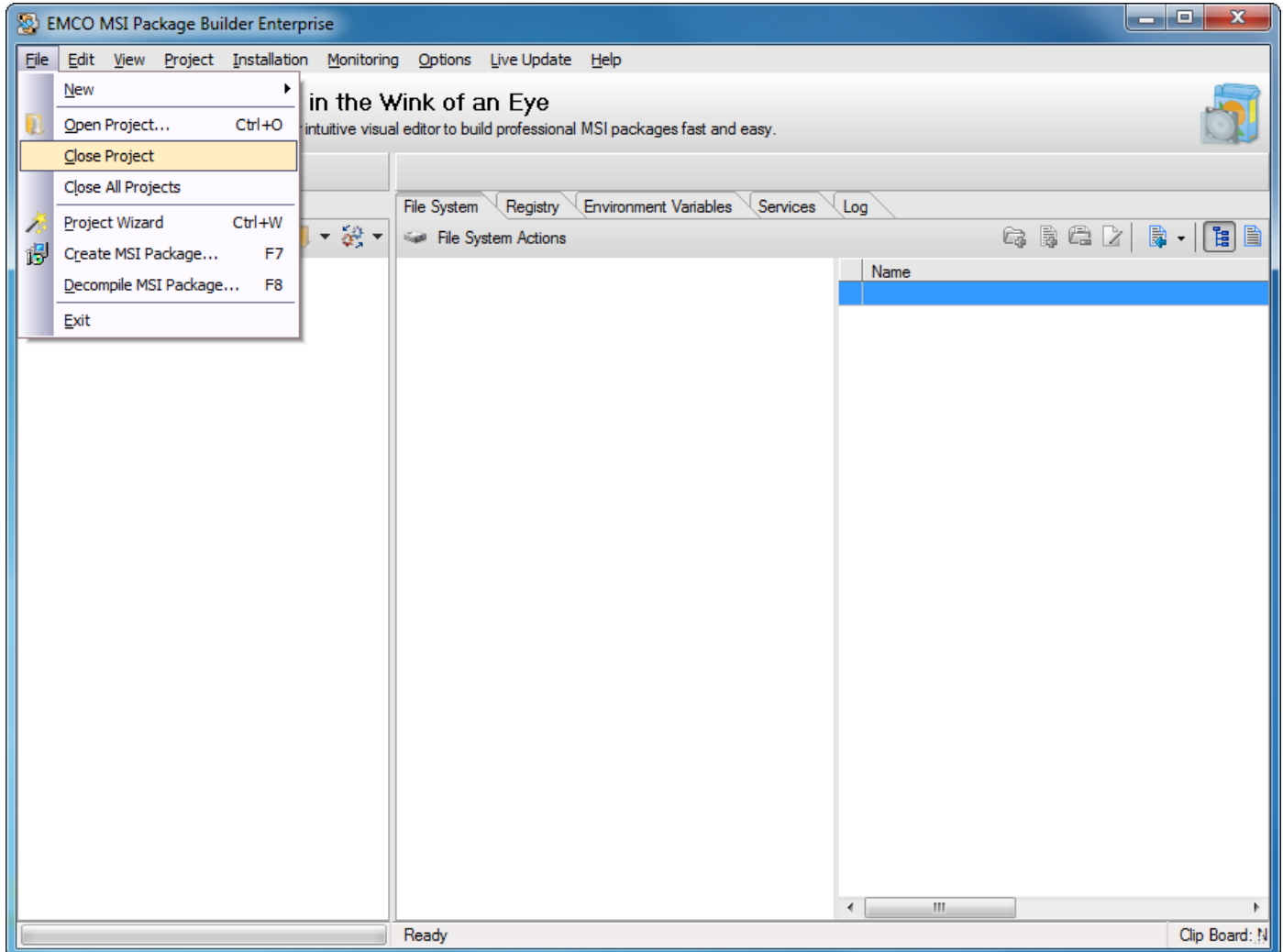
5. This will delete the selected project.



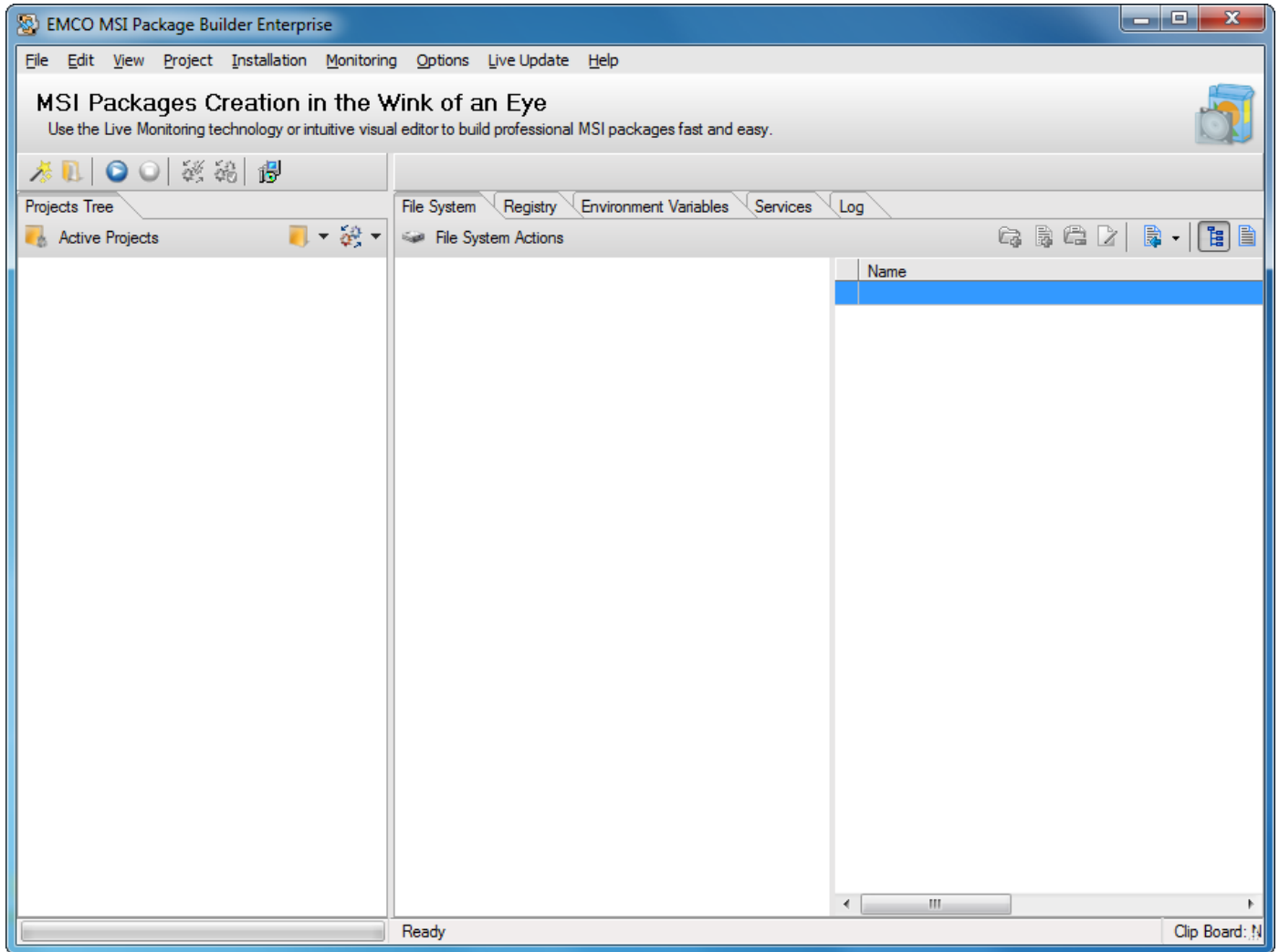
Close Project

To close a project in EMCO MSI Package Builder perform the following steps:

1. Select the project you want to close from the Projects Tree.
2. Select Close Project... menu item from the Project Tree viewer context menu or under File application menu.



- This will close the selected project.



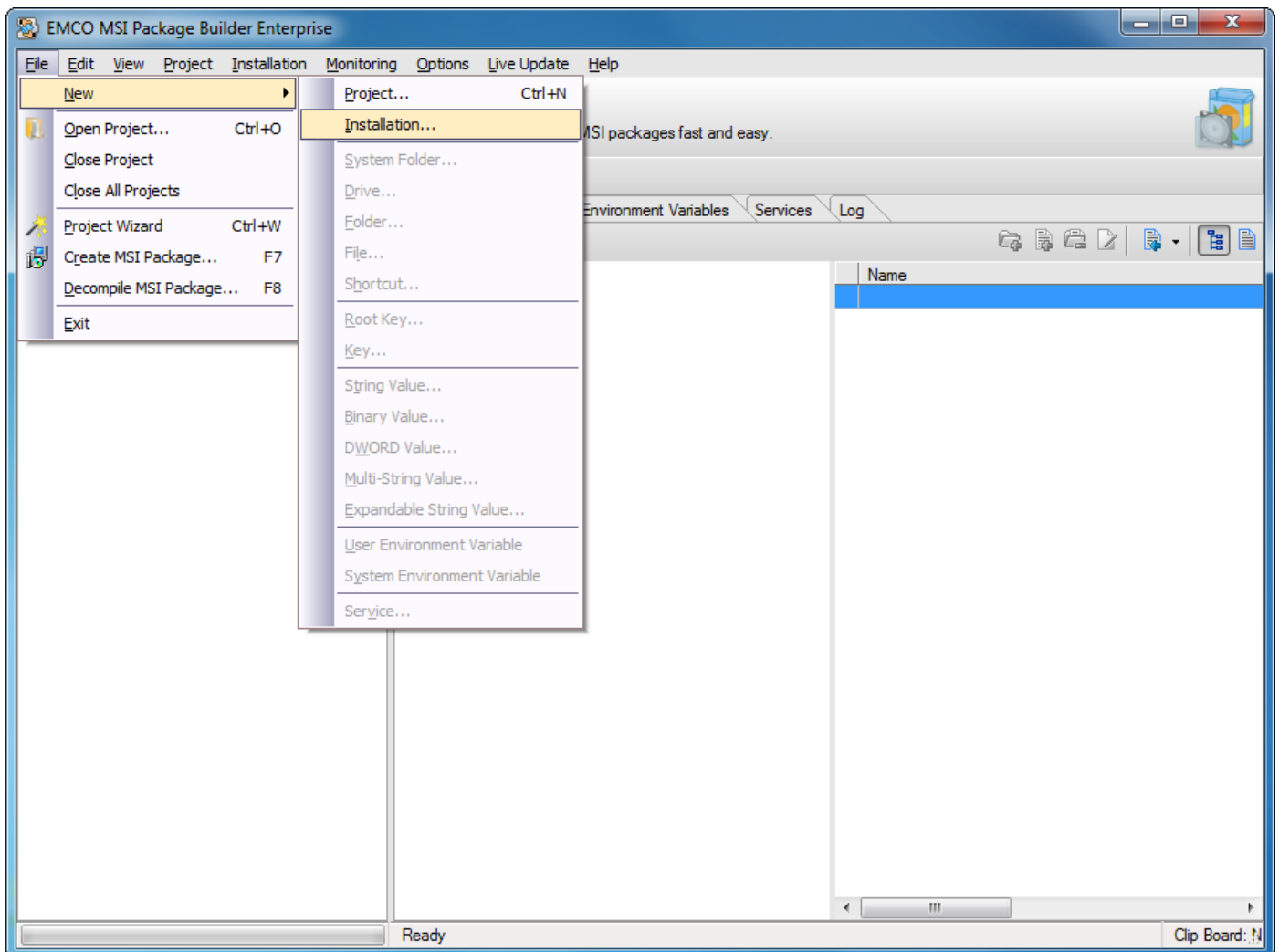
Installations Actions

- Add Installation
- Rename Installation
- Delete Installation

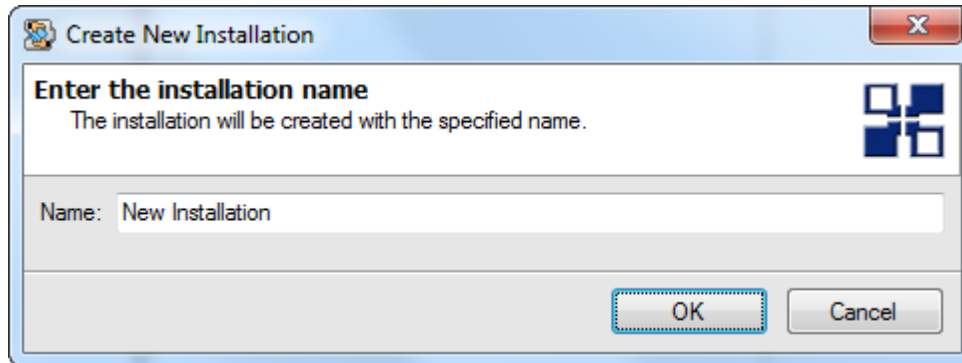
Add Installation

To add a new installation in EMCO MSI Package Builder perform the following steps:

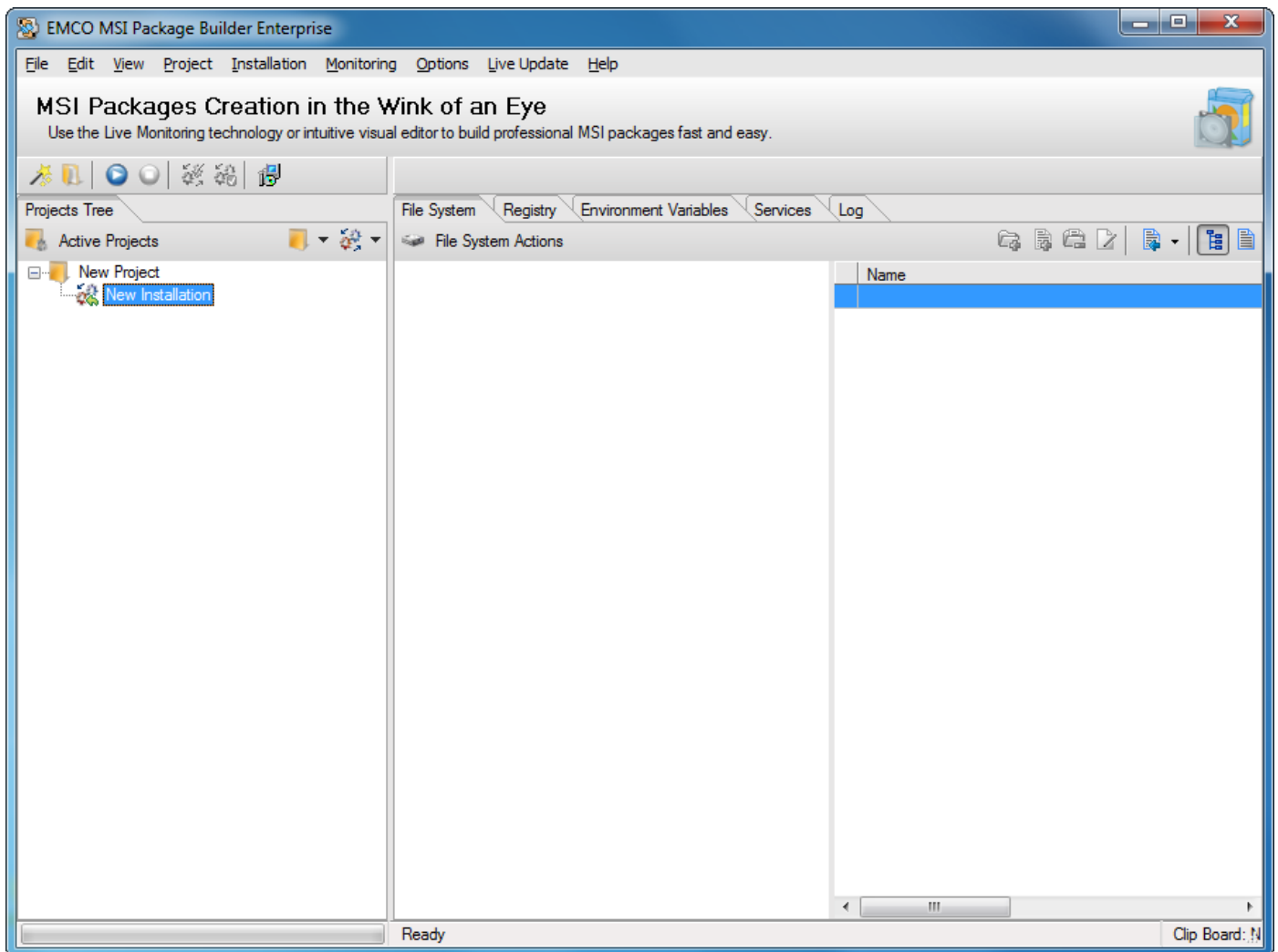
1. Right click the project you want to add installation to from the Projects Tree and select New Installation menu item from the pop-up menu.



2. Create New Installation dialog appears on the screen.
3. Type an installation name in the Name field.



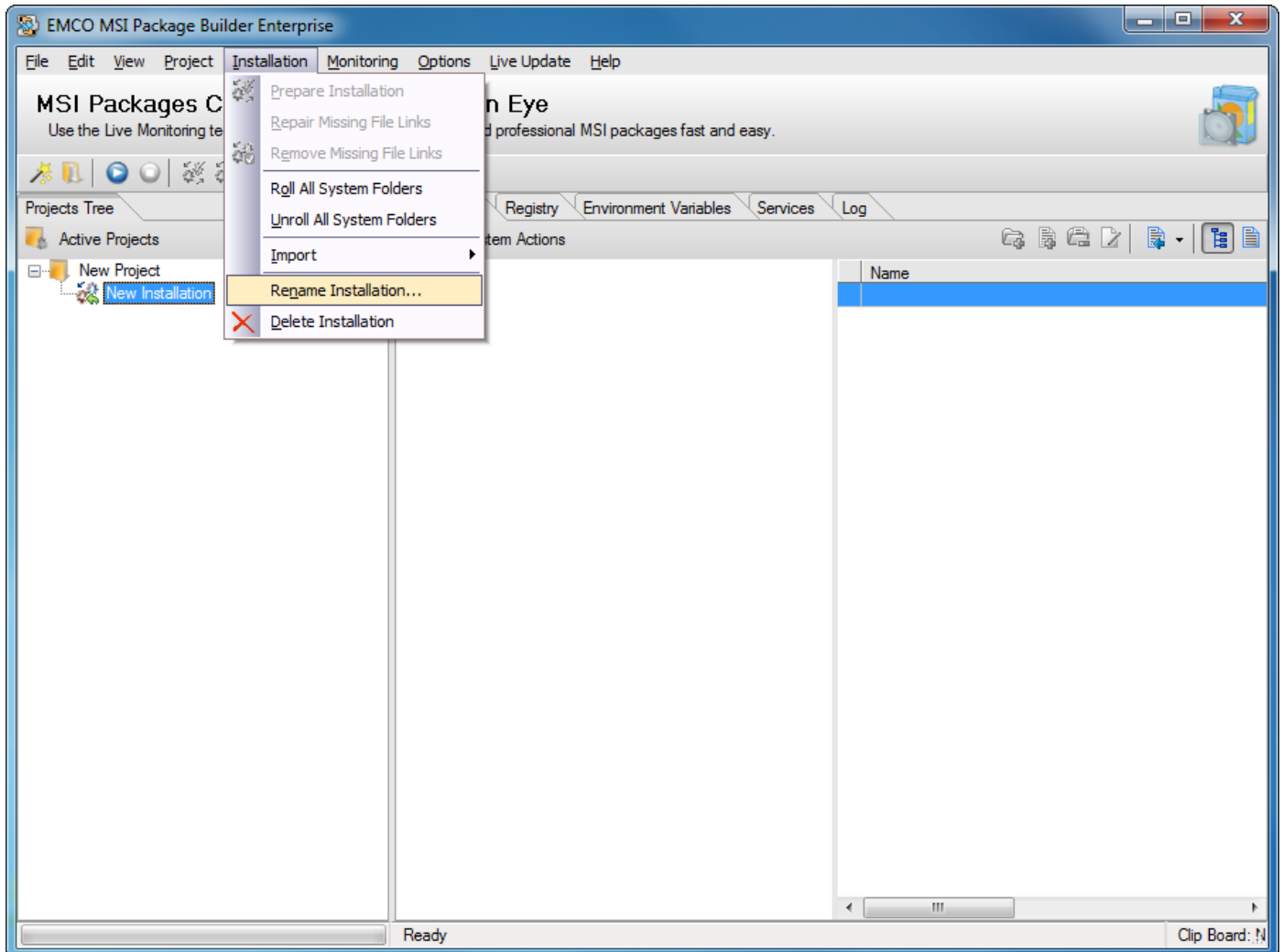
4. Press Ok button.
5. This will create new installation and it will appear in the Projects Tree.



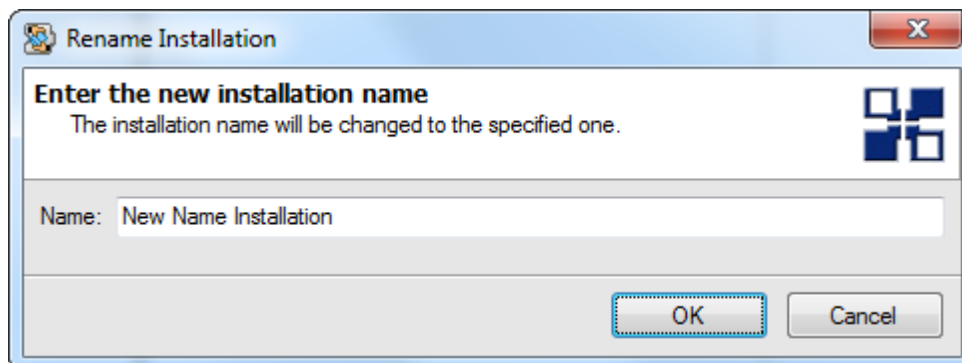
Rename Installation

To rename an installation in EMCO MSI Package Builder perform the following steps:

1. Select the installation you want to rename in the Projects Tree.
2. Right click the selected installation and select Rename Installation menu item from the pop-up menu. Alternately you can select Rename Installation item under Installation main menu.

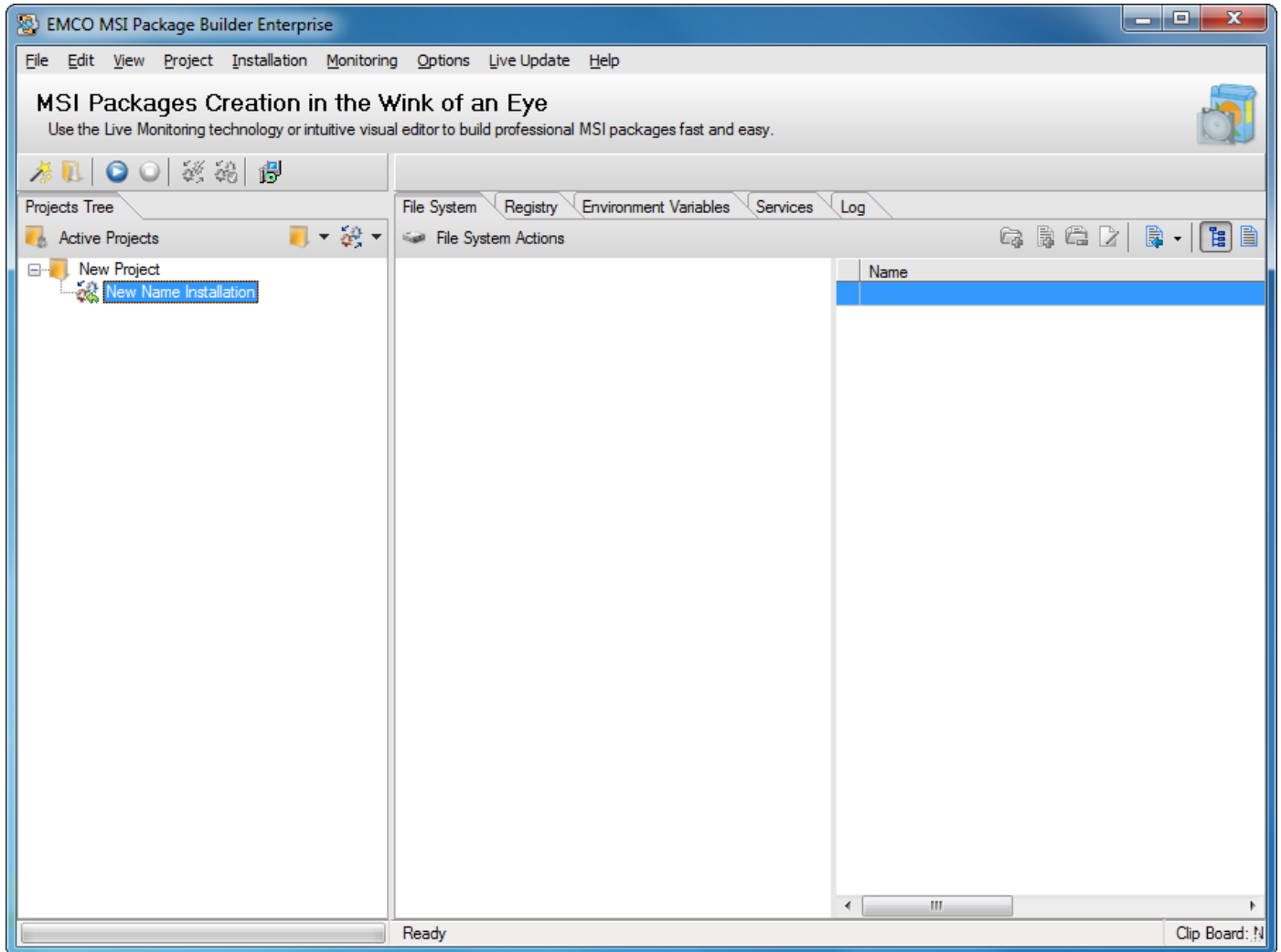


3. Rename dialog appears on the screen.
4. Type in new installation name in the New Name field.



5. Press Ok button.

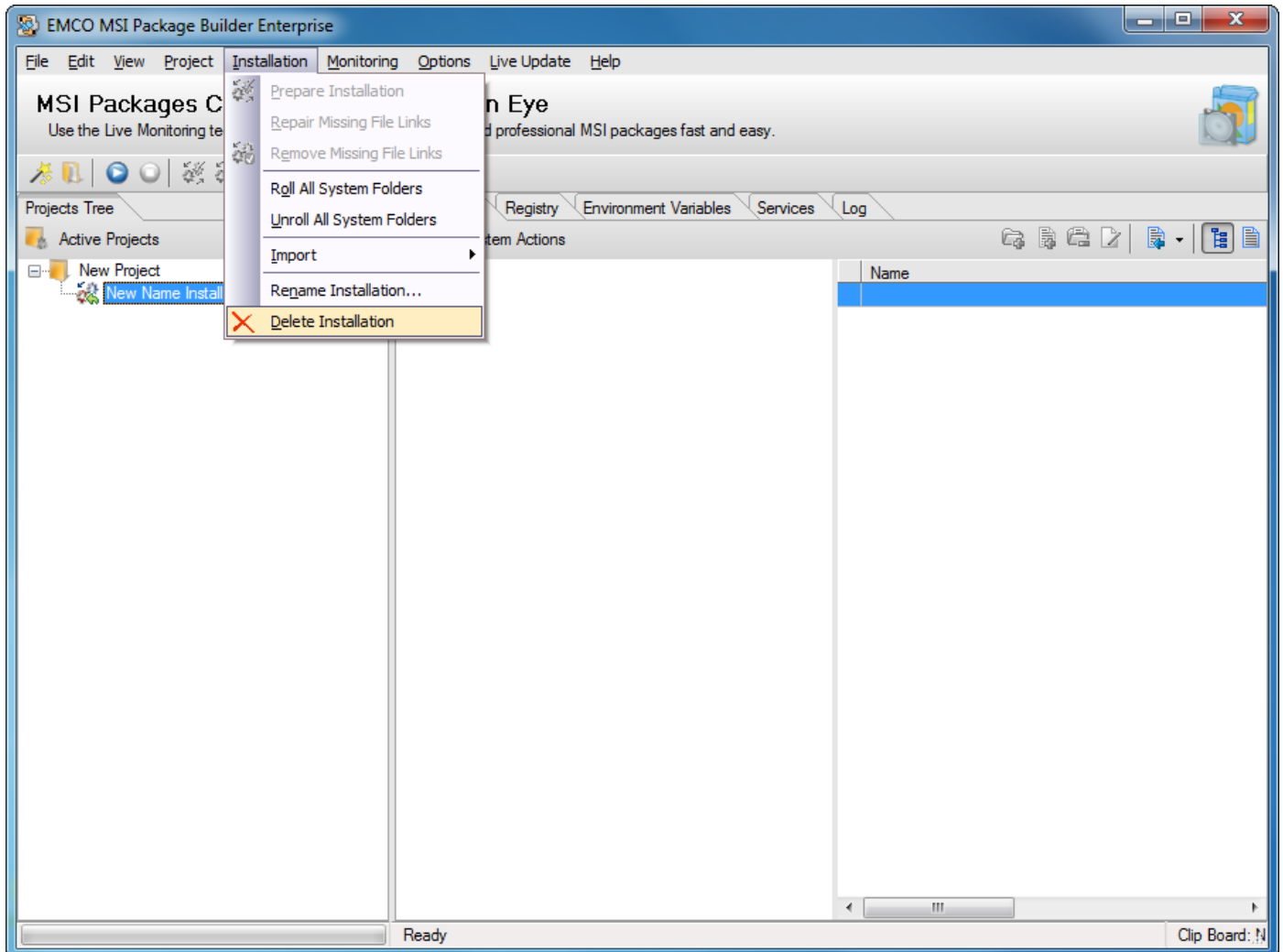
6. This will rename the selected installation.



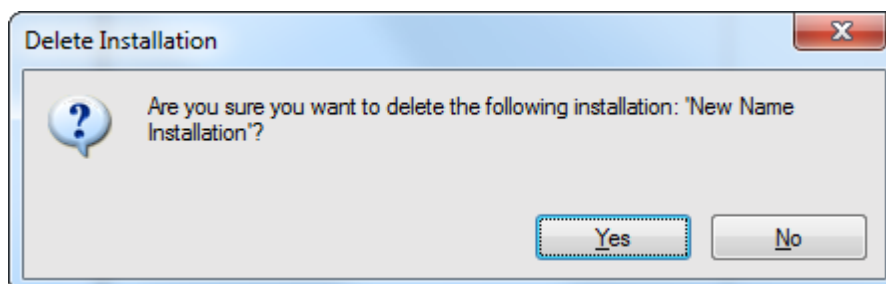
Delete Installation

To delete an installation in EMCO MSI Package Builder perform the following steps:

1. Select the installation you want to delete in the Projects Tree.
2. Right click the selected installation and select Delete Installation menu item from the pop-up menu. Alternately you can select Delete Installation item under Installation main menu.

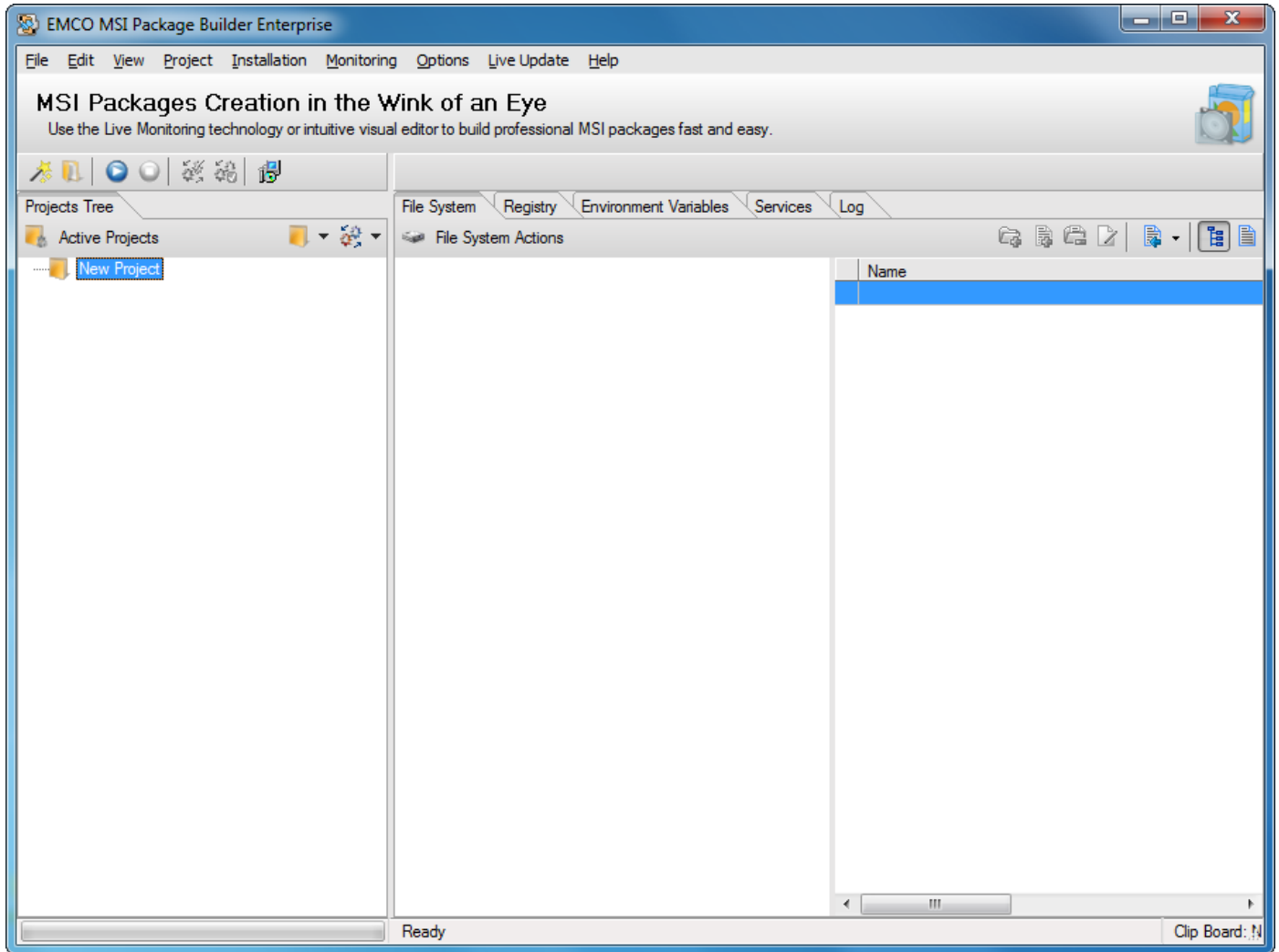


3. A confirmation dialog appears on the screen.



4. Press Yes button.

5. This will delete the selected installation.

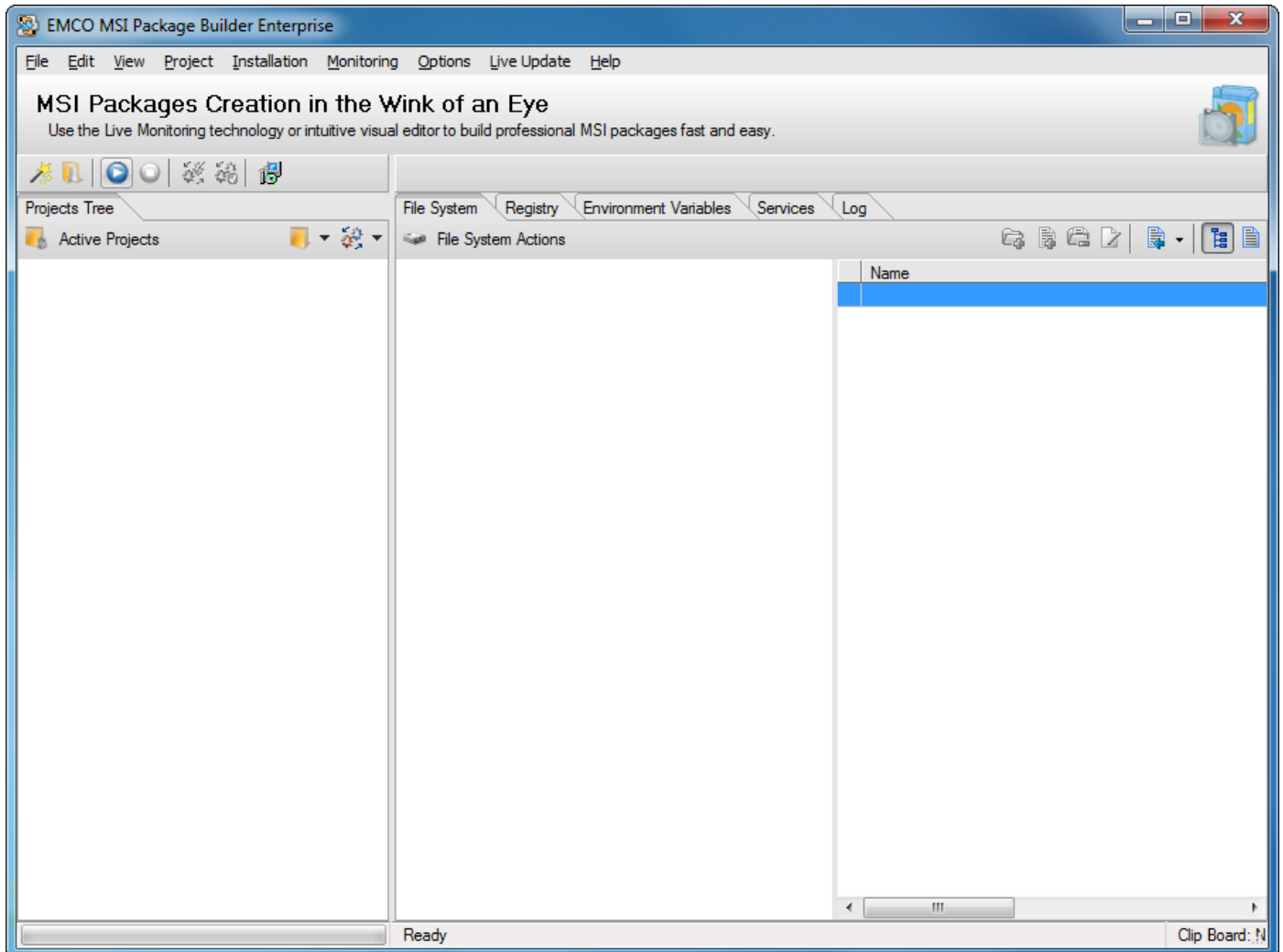


Capture Data from an Existing MSI Installation

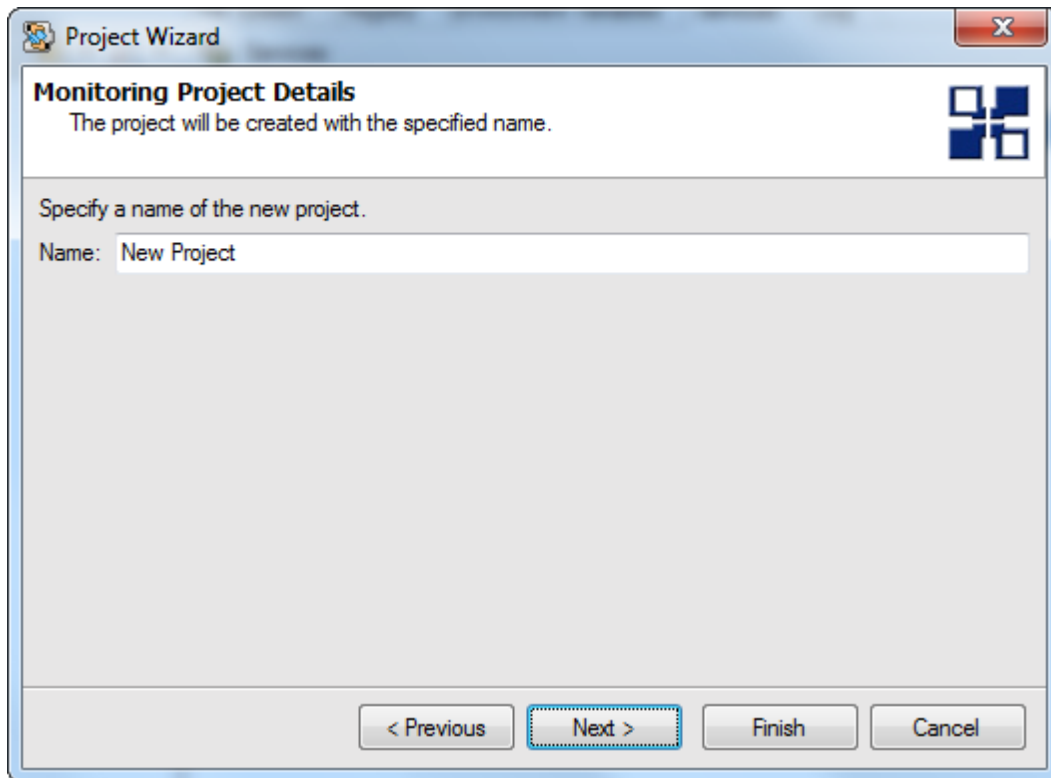
Let's begin with capturing data from an existing installation.

To capture data from an installation in EMCO MSI Package Builder perform the following steps:

1. Click Start Monitor Icon shown button located in the tool bar.

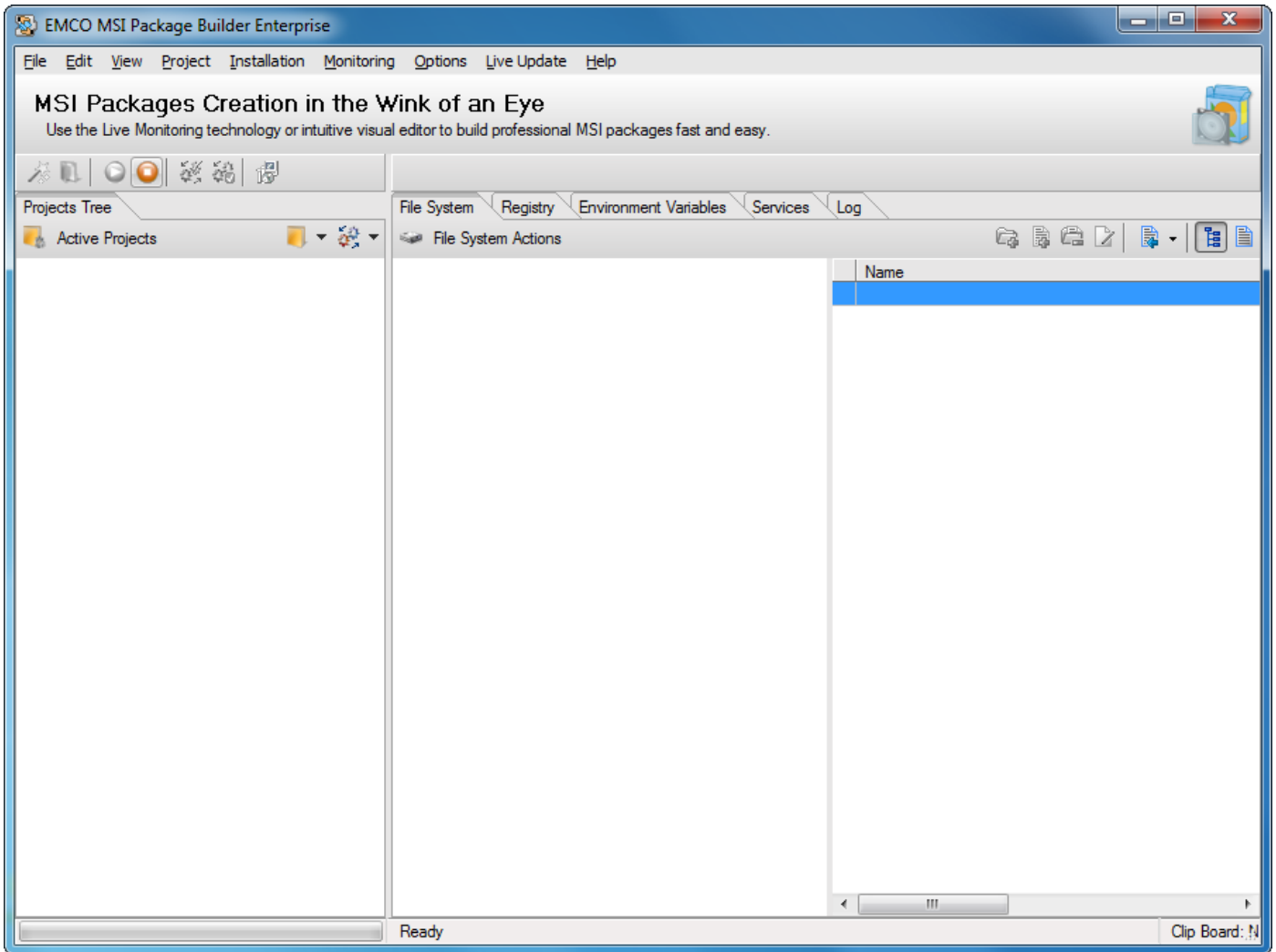


2. New Project Name dialog appears on the screen.
3. Type in the name of your new project in the New Name field.

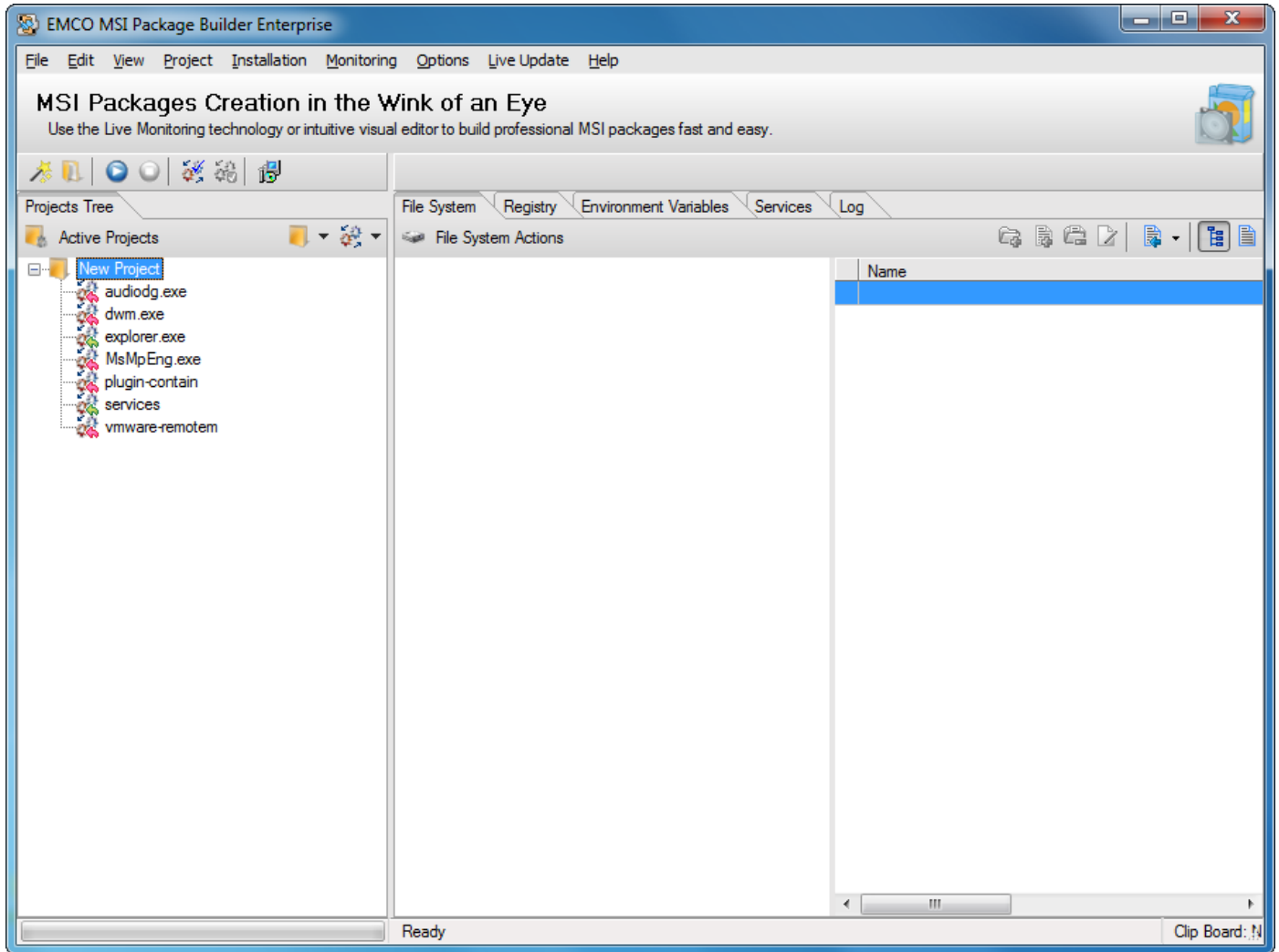


4. Press Ok button.

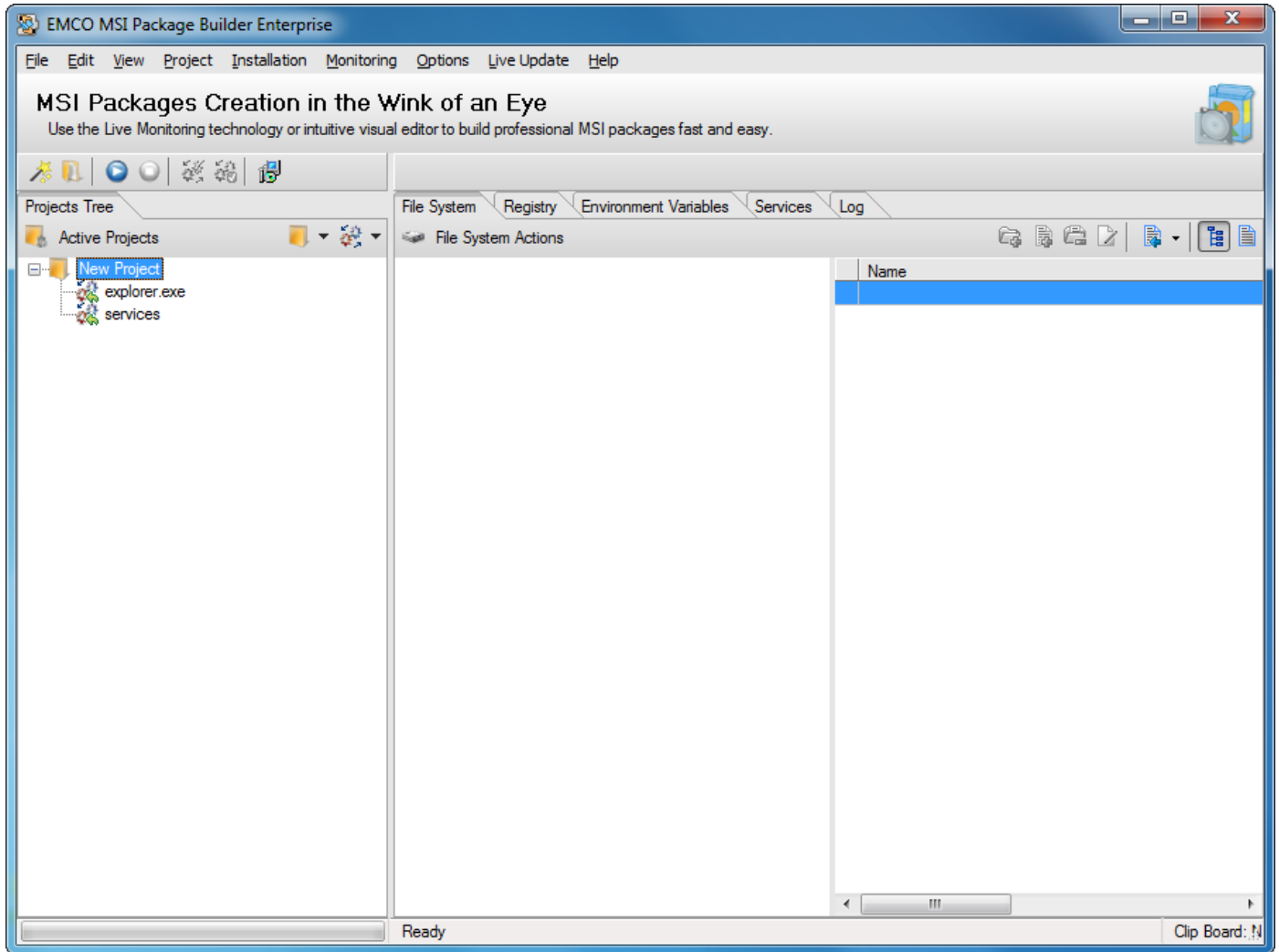
5. Run the installation you want to capture data from.
6. After you finish with your installation click Stop Monitor button located in the tool bar.



- The captured information will appear under the project node.



8. Keep the required items and remove the rest.



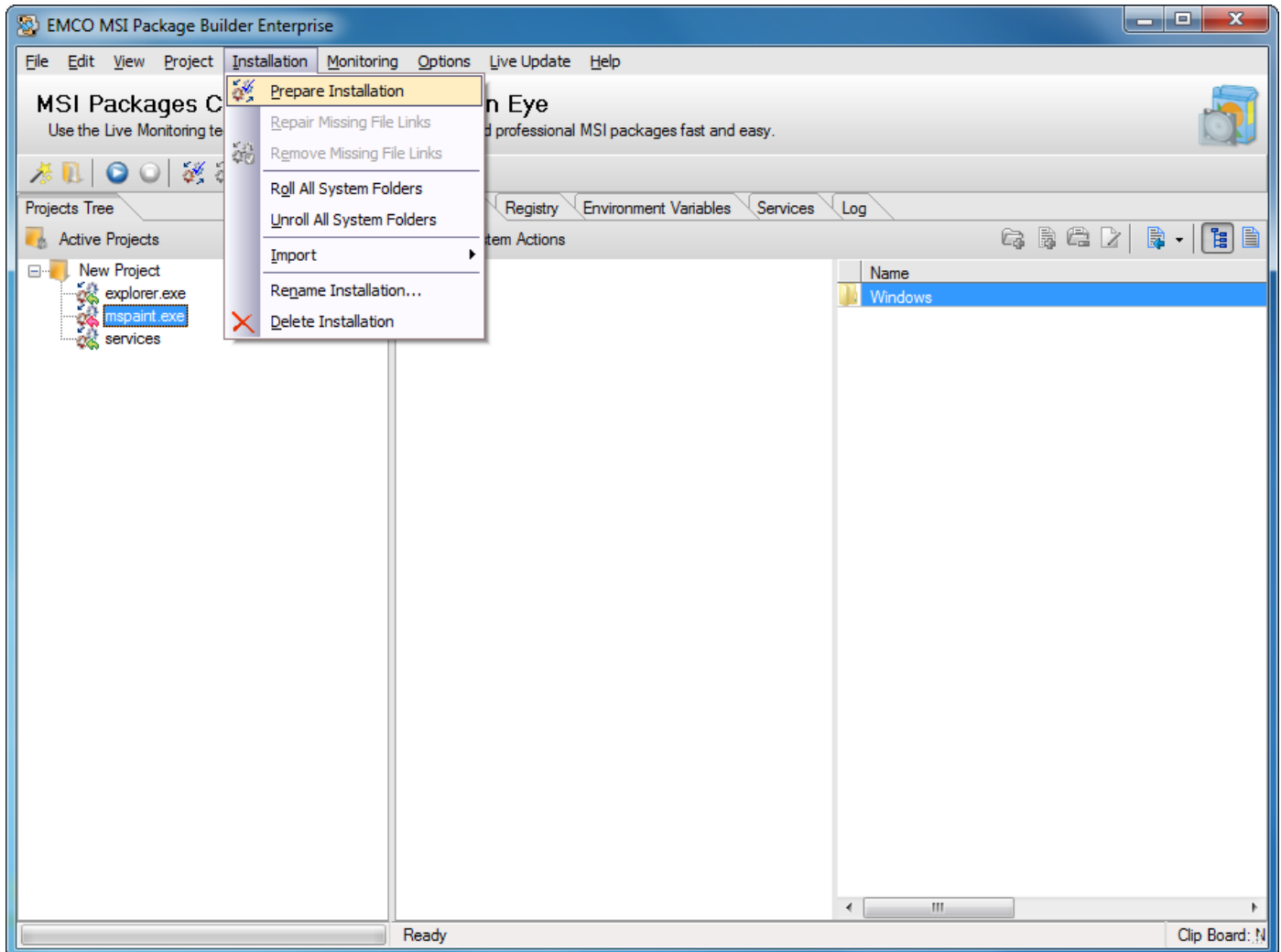
Now you have the required information about your installation.

Prepare Installation

Before we are able to build MSI installation we need to prepare installation.

To prepare installation in EMCO MSI Package Builder perform the following steps:

1. After you have captured the required data from an existing installation click Prepare Installation menu item under Installation menu.



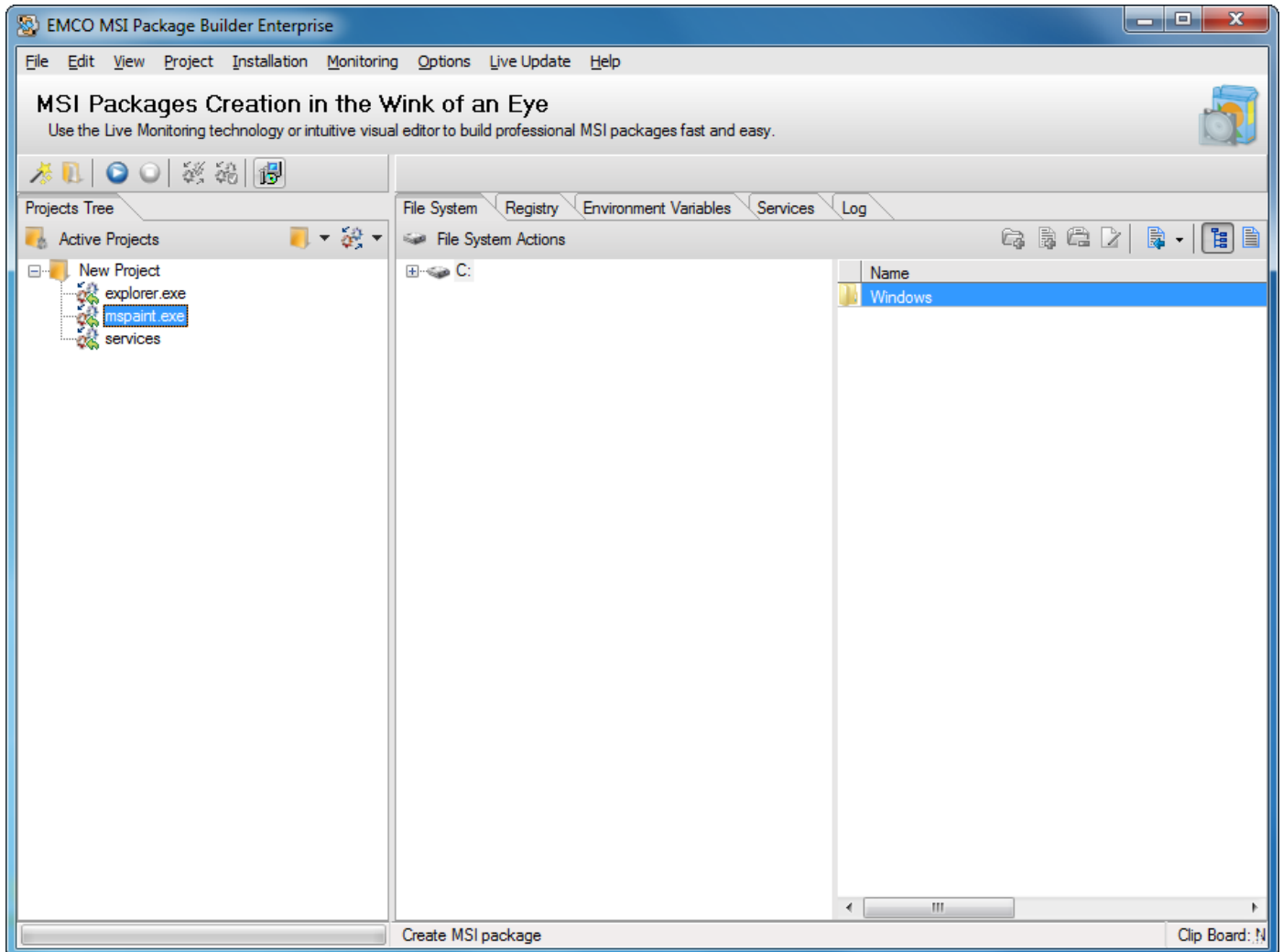
2. This will start preparing the installations.
3. Now you have successfully prepared your installation files.

Build MSI Package

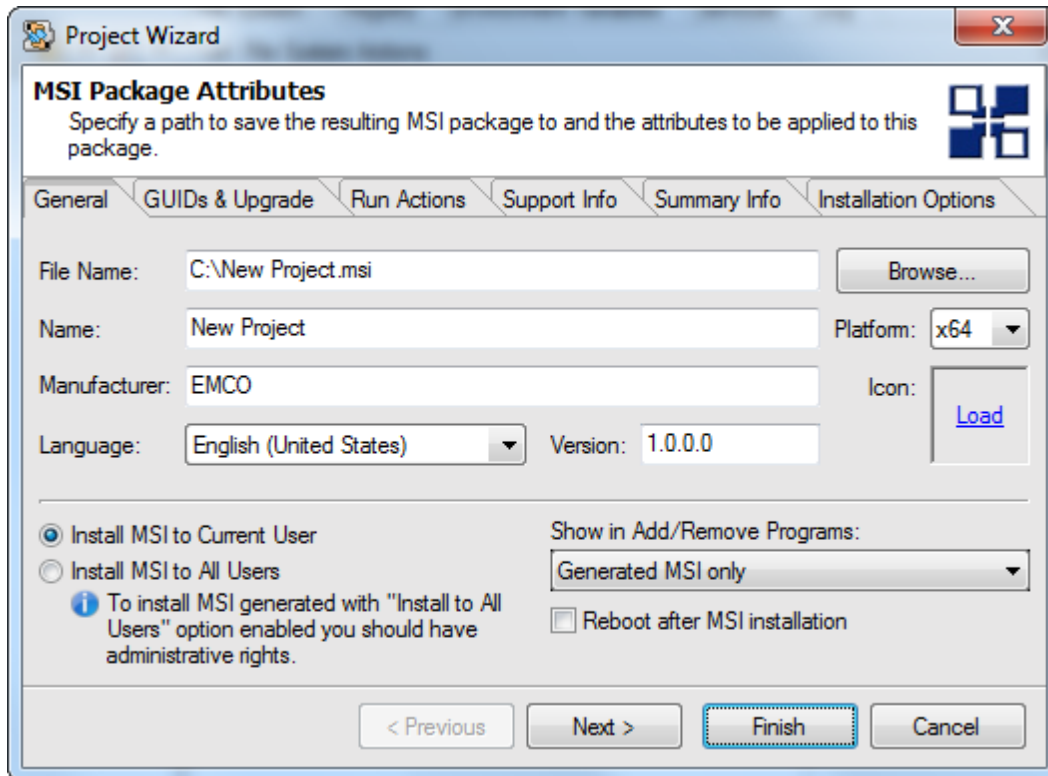
Now we will build MSI Package using the information we captured in the previous section.

To build MSI Package in EMCO MSI Package, perform the following steps:

1. After you have prepared your installation click Create MSI Package button located in the tool bar.



2. Create MSI dialog box will appear on the screen.
3. Type in the name of the file in File Name field.
4. Select the language for your installation.
5. Fill other general information, support information and summary information.
6. If you want to reboot machines after the MSI installation, check the Reboot after MSI installation option.



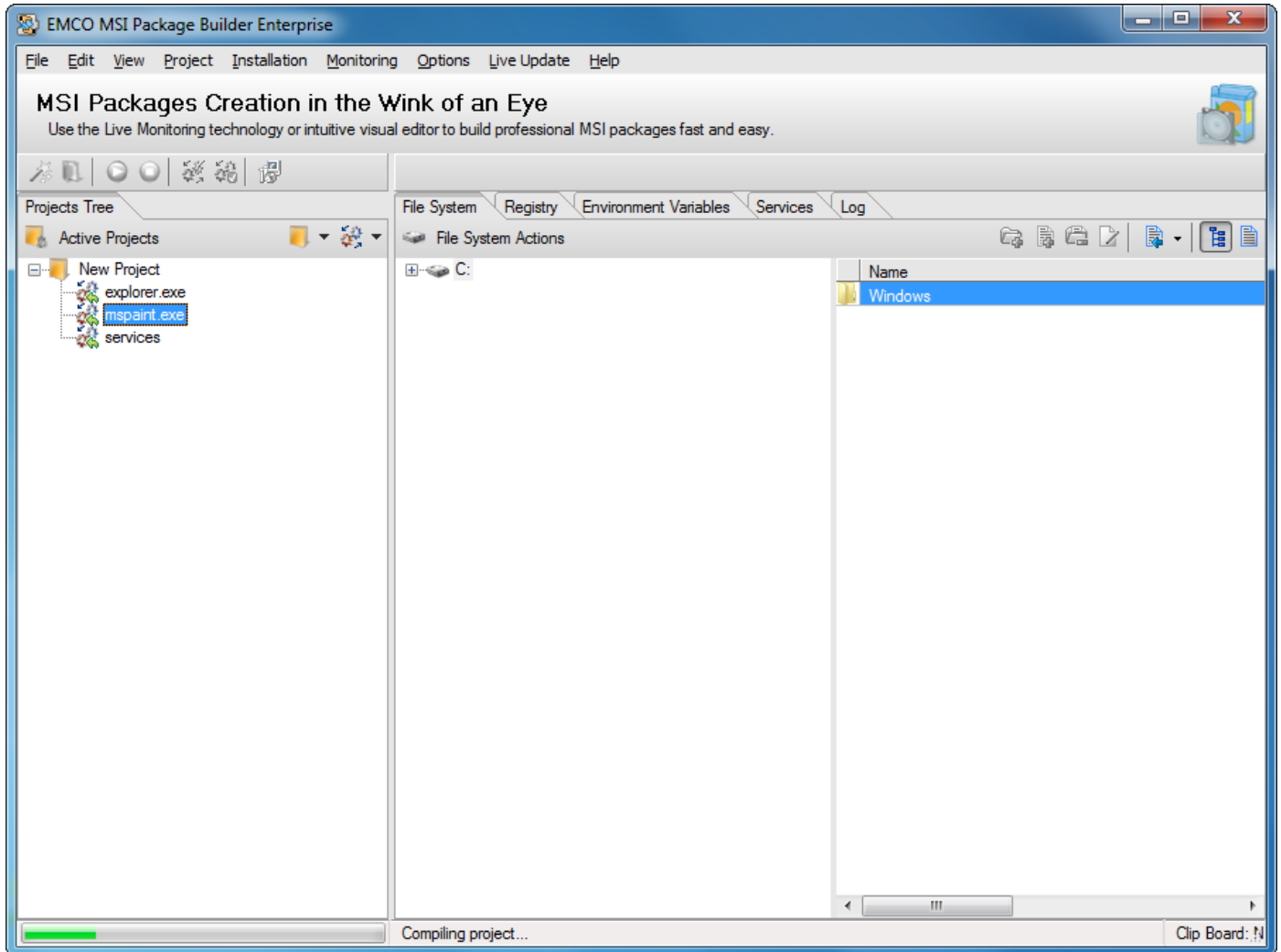
The screenshot shows the 'Project Wizard' dialog box, specifically the 'MSI Package Attributes' tab. The dialog has a title bar with a close button (X) and a help icon. Below the title bar is a subtitle 'MSI Package Attributes' and a brief instruction: 'Specify a path to save the resulting MSI package to and the attributes to be applied to this package.' The dialog is divided into several tabs: 'General', 'GUIDs & Upgrade', 'Run Actions', 'Support Info', 'Summary Info', and 'Installation Options'. The 'General' tab is active. It contains the following fields and options:

- File Name:** C:\New Project.msi (with a 'Browse...' button)
- Name:** New Project
- Manufacturer:** EMCO
- Language:** English (United States) (dropdown menu)
- Version:** 1.0.0.0
- Platform:** x64 (dropdown menu)
- Icon:** Load (button)
- Installation Options:**
 - Install MSI to Current User
 - Install MSI to All Users
 - Reboot after MSI installation
 - Show in Add/Remove Programs:** Generated MSI only (dropdown menu)
 - To install MSI generated with "Install to All Users" option enabled you should have administrative rights.

At the bottom of the dialog are four buttons: '< Previous', 'Next >', 'Finish' (highlighted with a dashed border), and 'Cancel'.

7. Press Finish button.

8. This will start creating MSI installation.



9. This will create you installation and save it to the specified location.