

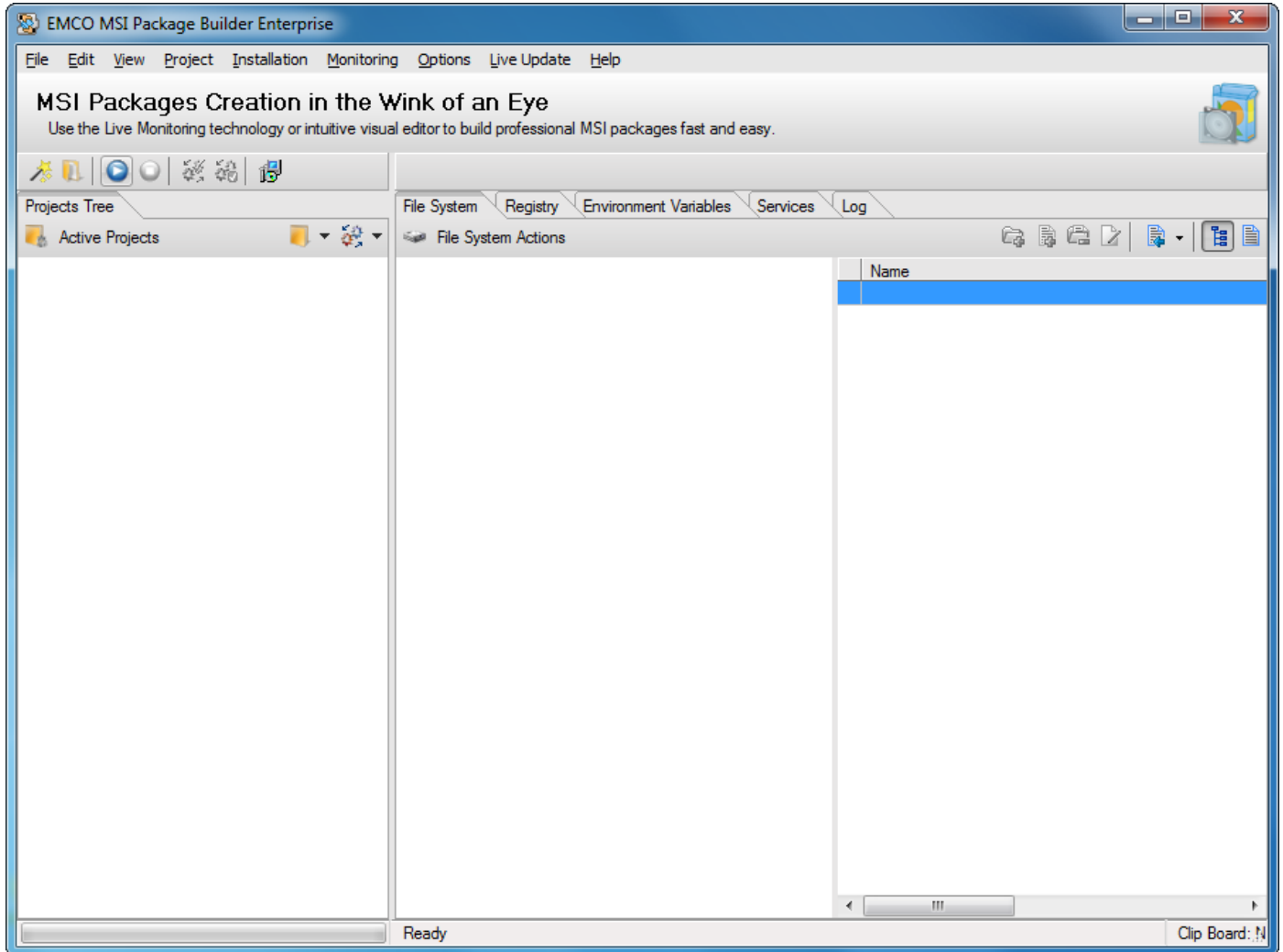
Knowledgebase Article

Monitoring, Capture and creation of MSI package

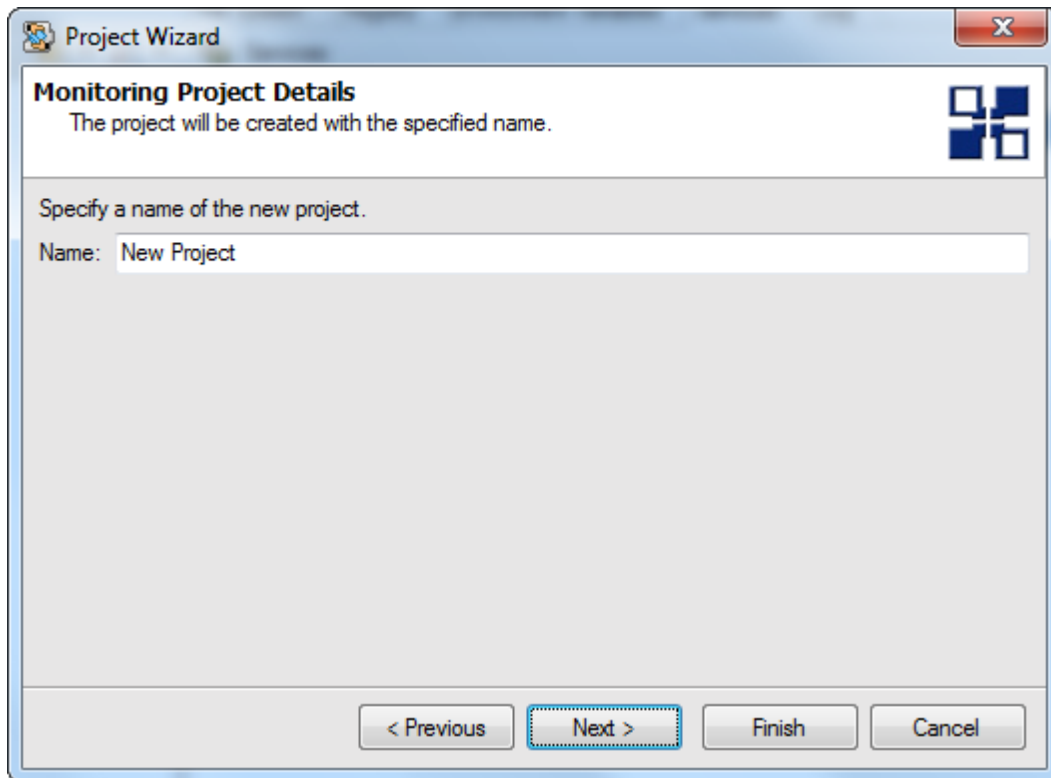
© Copyright 2001-2012 EMCO Software

Monitoring, Capture and creation of MSI package

1. Run MSI Package Builder.
2. Click Start Monitor Icon shown on the toolbar.

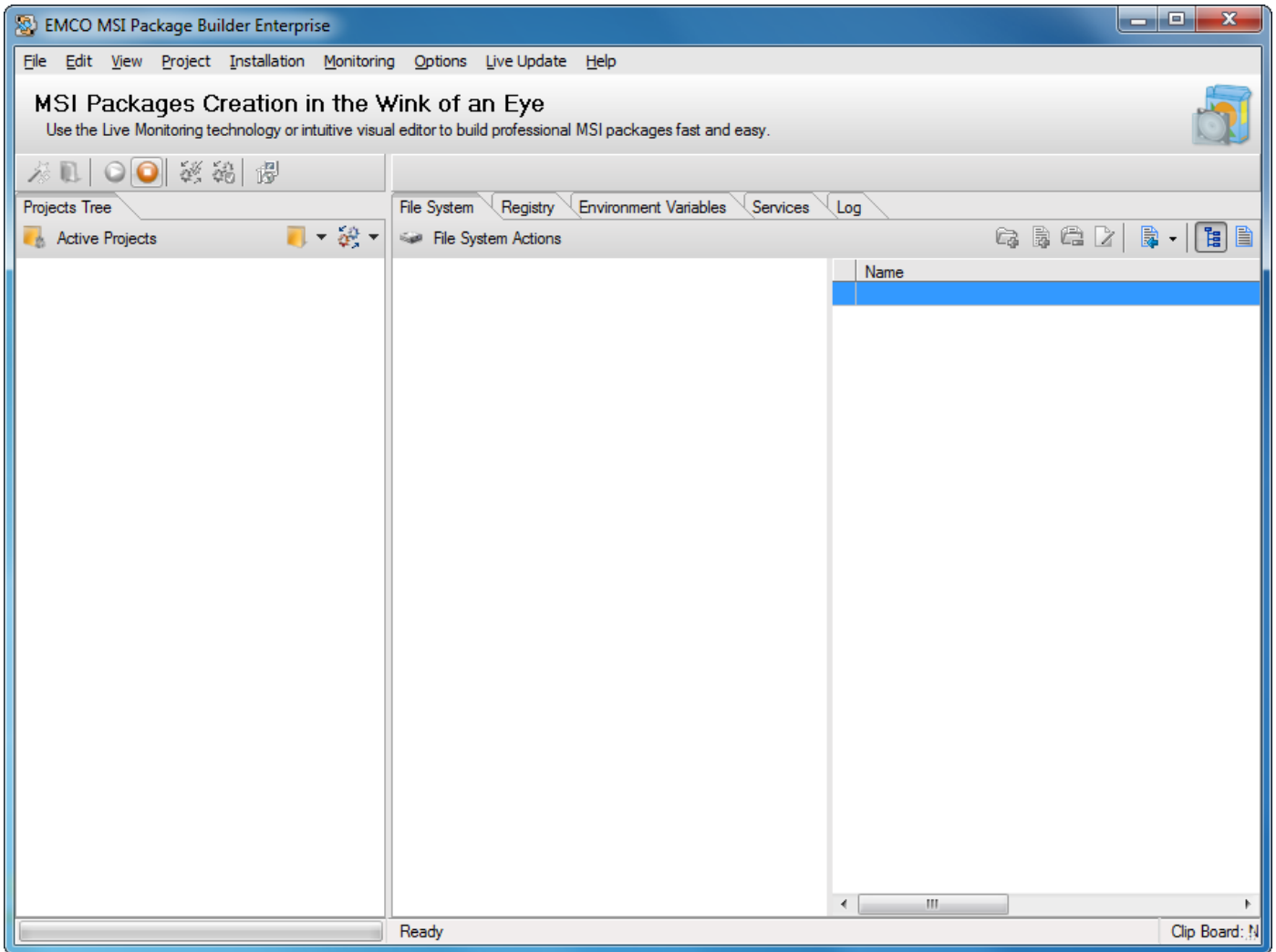


3. New Project Name dialog box will appear on the screen.
4. Type in the name of your new project in the New Name textbox.

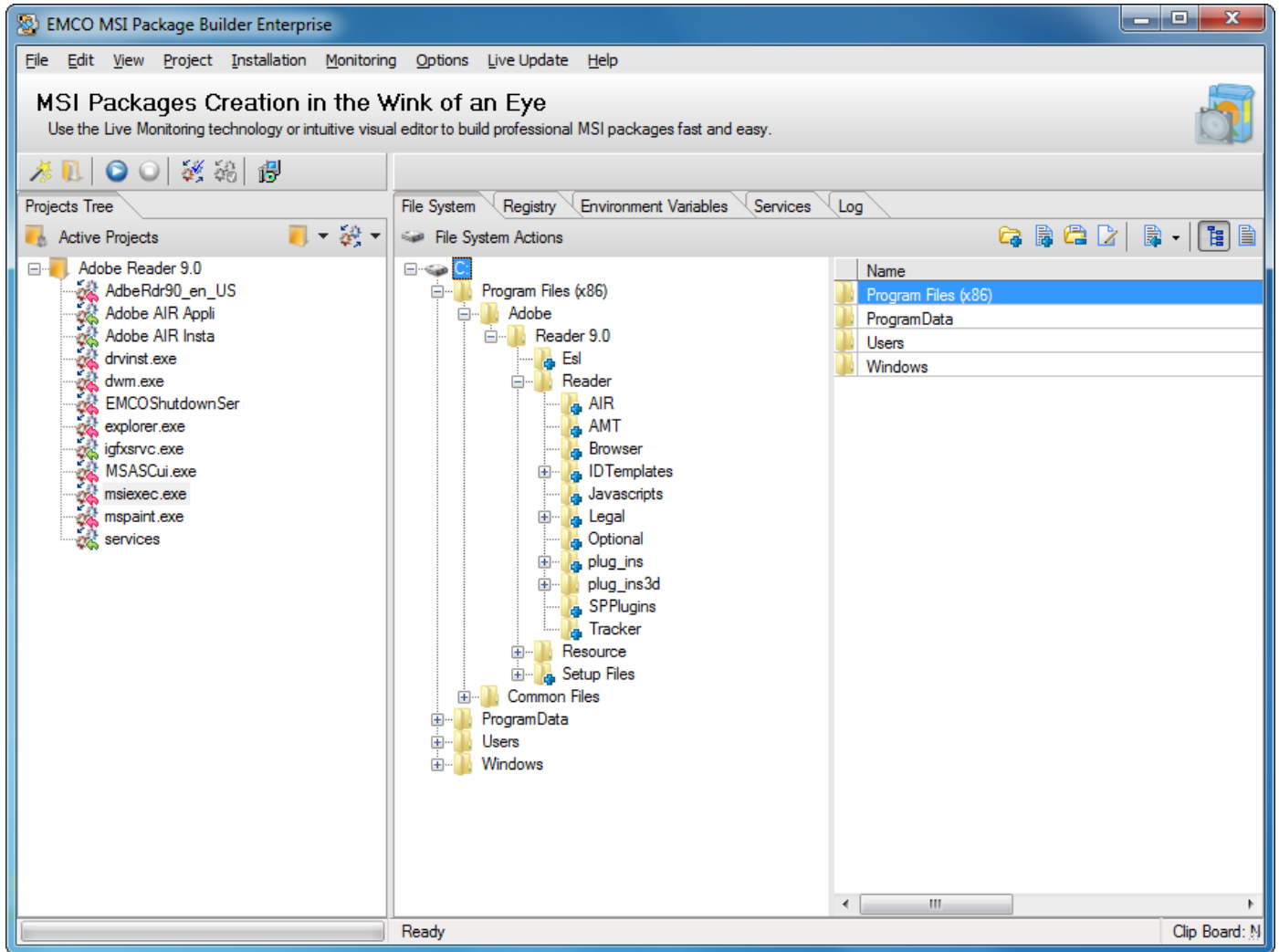


5. Click Ok button.

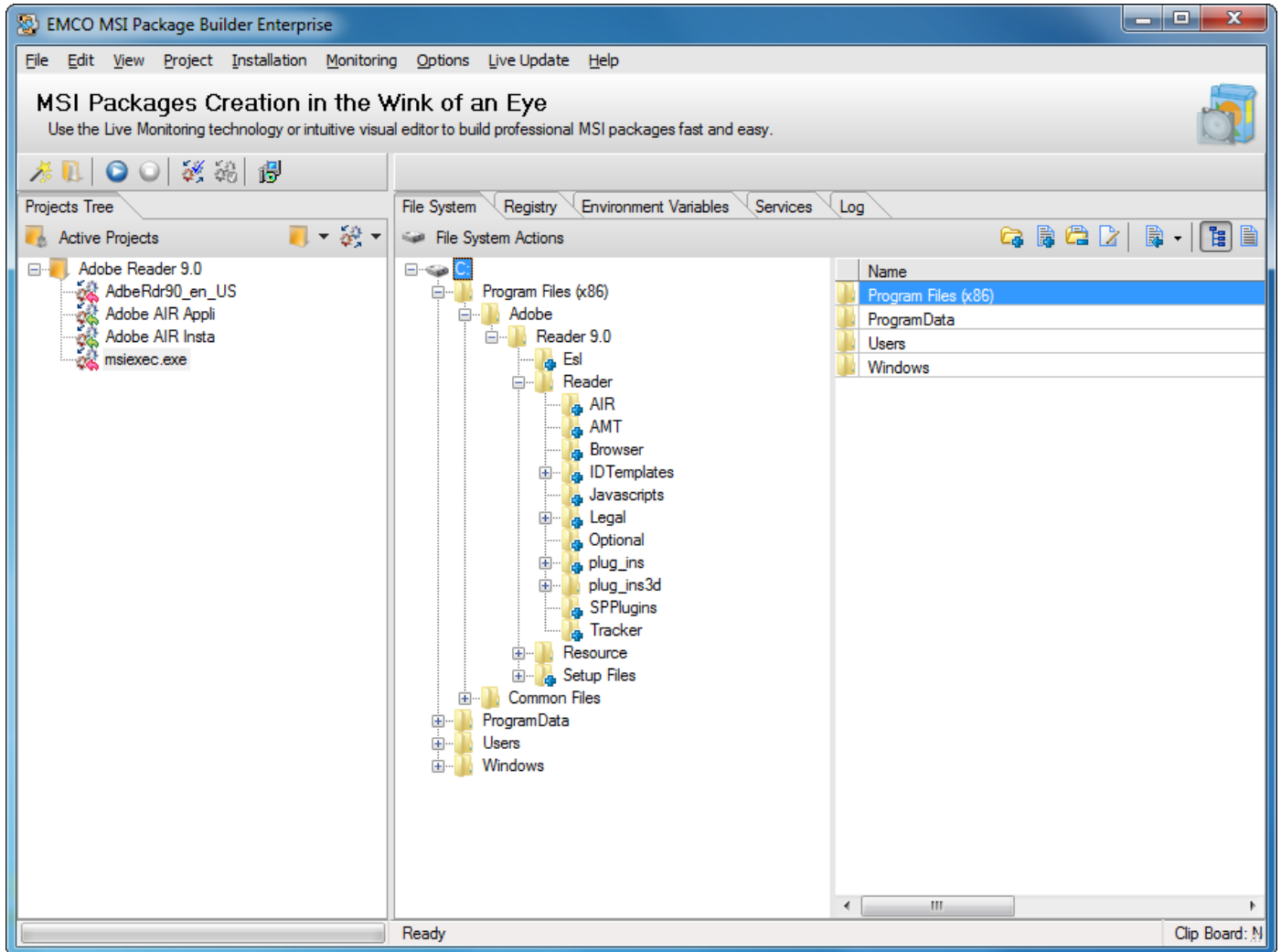
6. Run your required installation.
7. After you finish with your installation; click Stop Monitor icon shown on the toolbar.



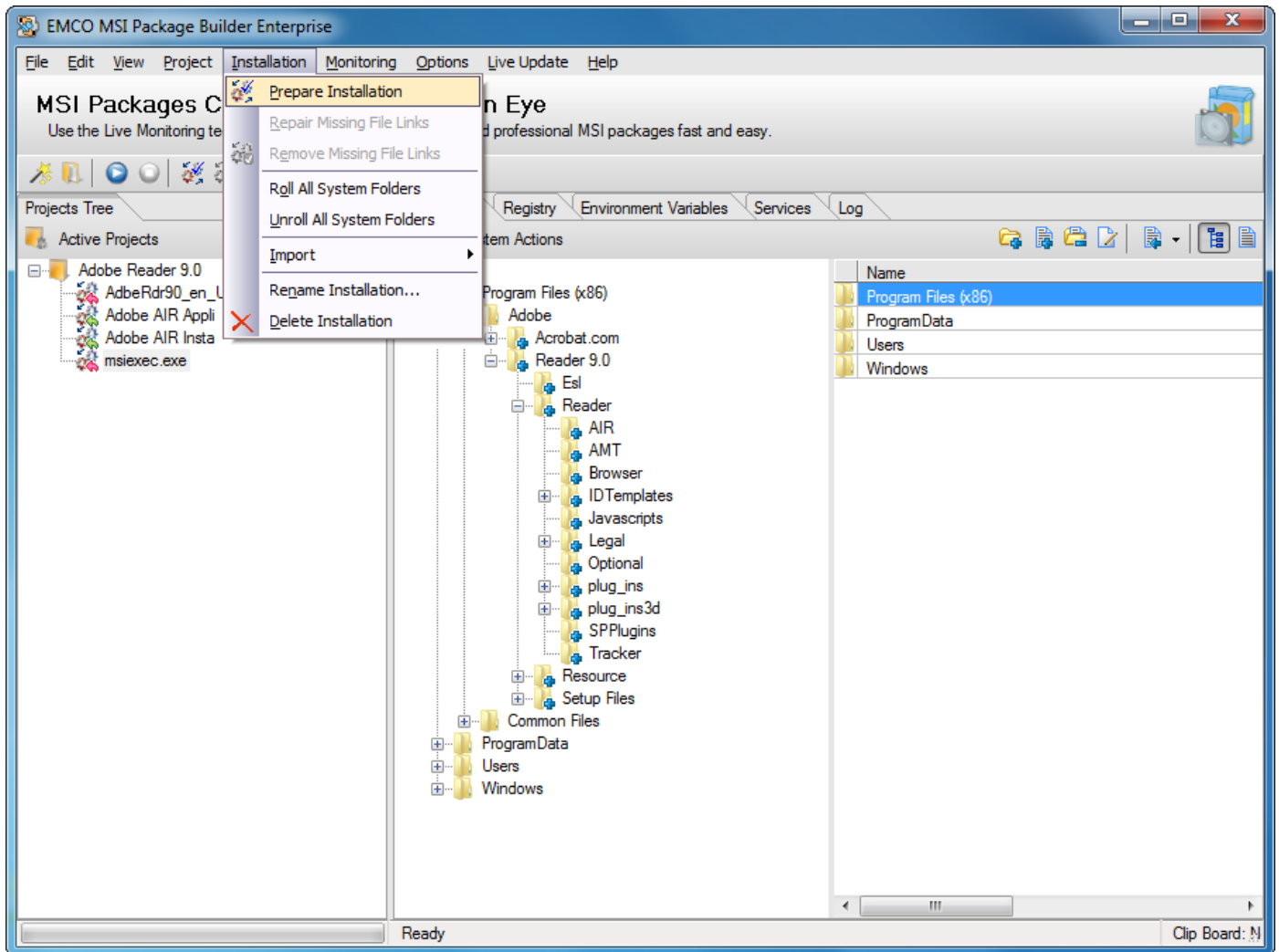
8. The captured information will appear under the project node.



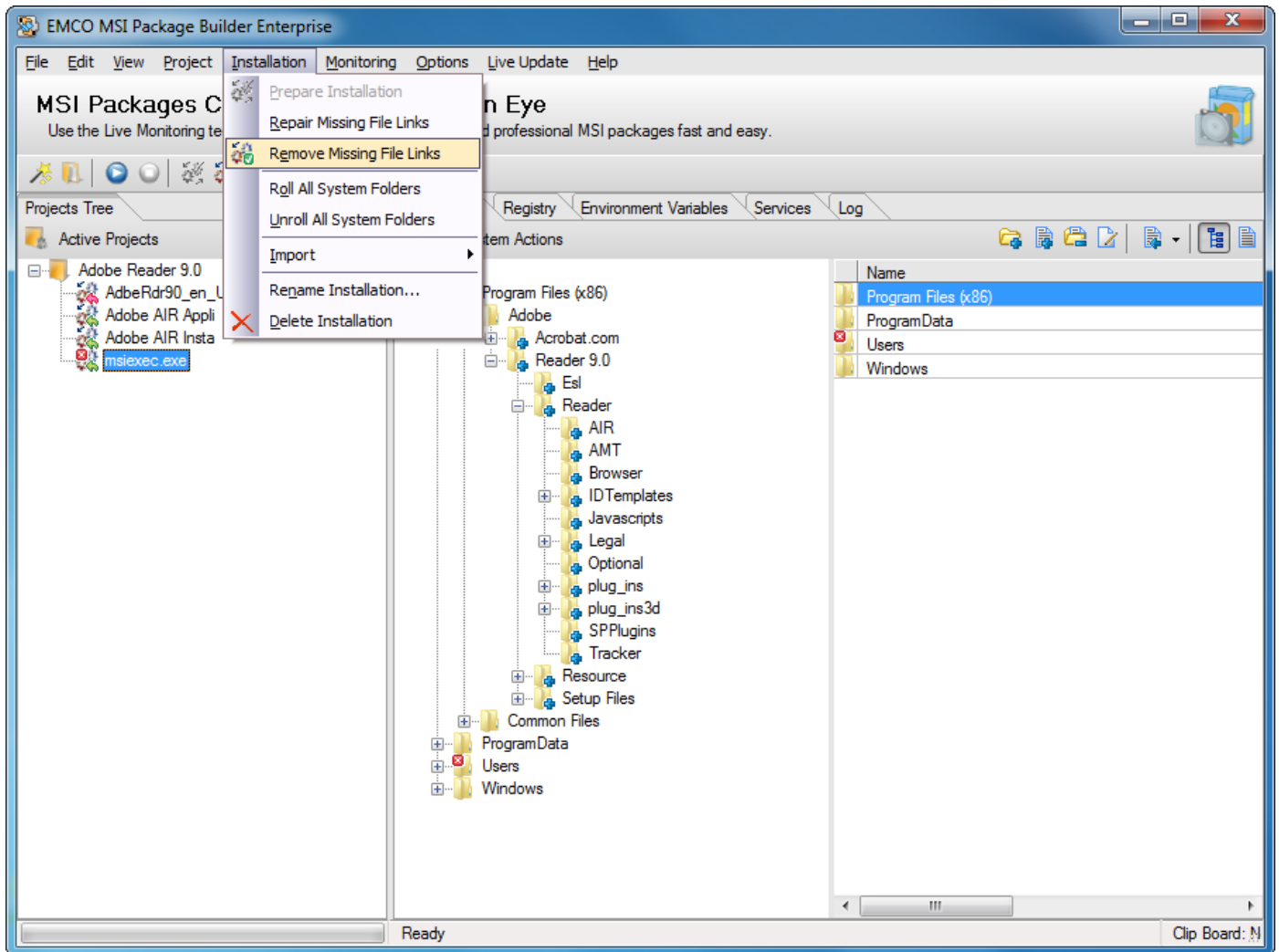
9. Keep the required items and remove the rest.



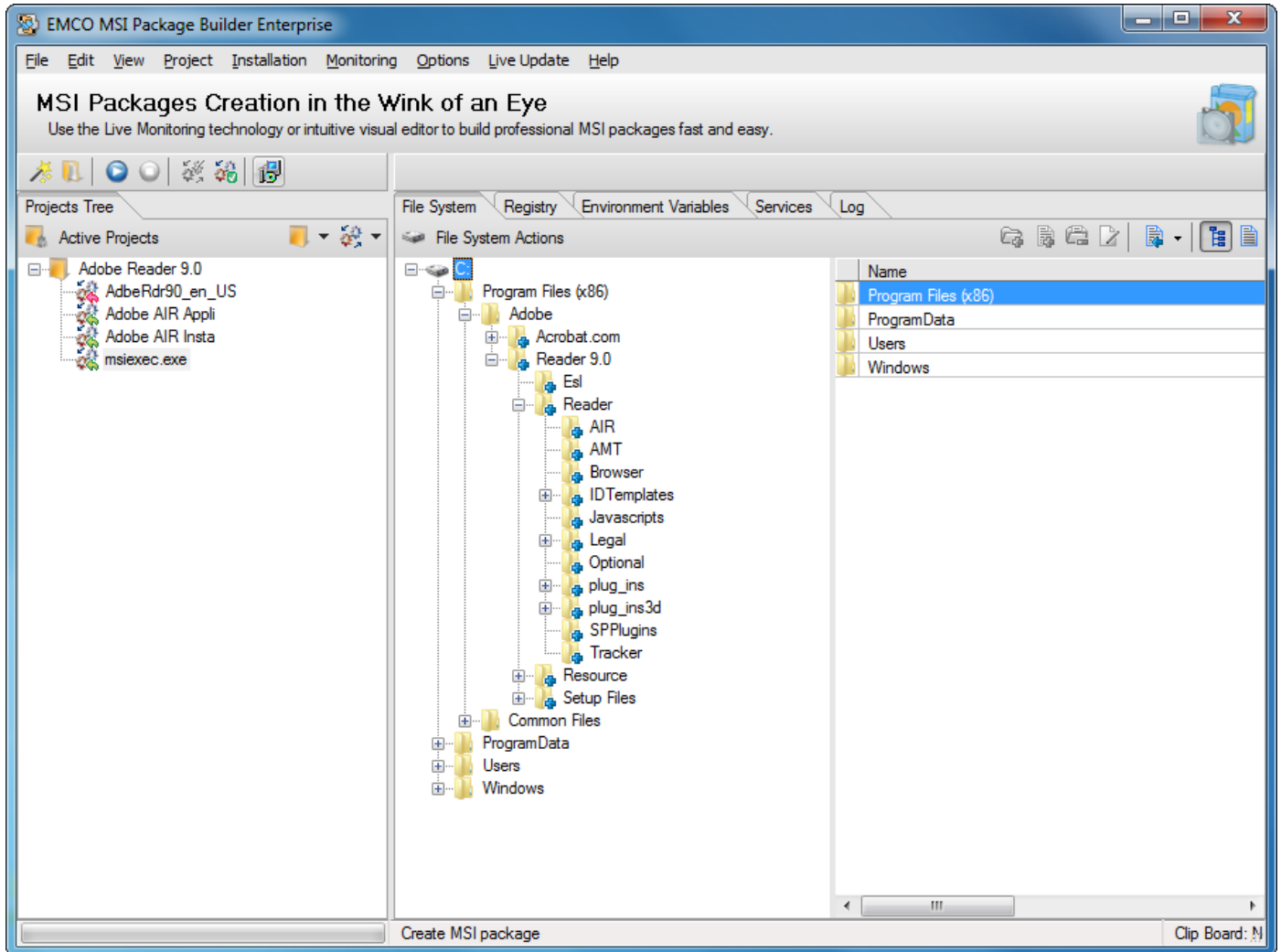
10. After you have captured the required data from an existing installation; click Prepare Installation menu item under Installation menu.



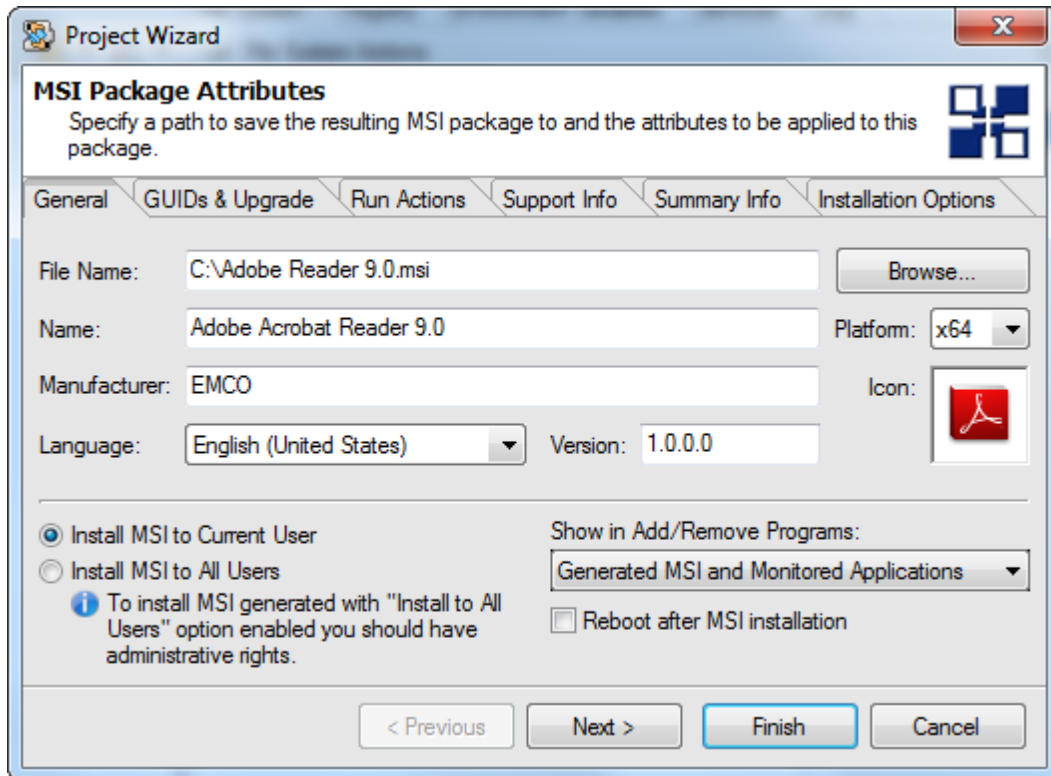
- After you have captured the required data from an existing installation; click Remove Missing File Links menu item under Installation menu.



12. After you have prepared your installation; click Create MSI Package icon shown on the toolbar.



13. Create MSI dialog box will appear on the screen.
14. Type in the name of the file in File Name textbox.
15. Select your required language for your installation.
16. Type the name for the installation in the Name textbox.
17. If you want to reboot machines after the MSI installation, check the Reboot after MSI installation checkbox.



18. Click Finish button.