

# Knowledgebase Article

---

## Fetch only new added computers since last scan

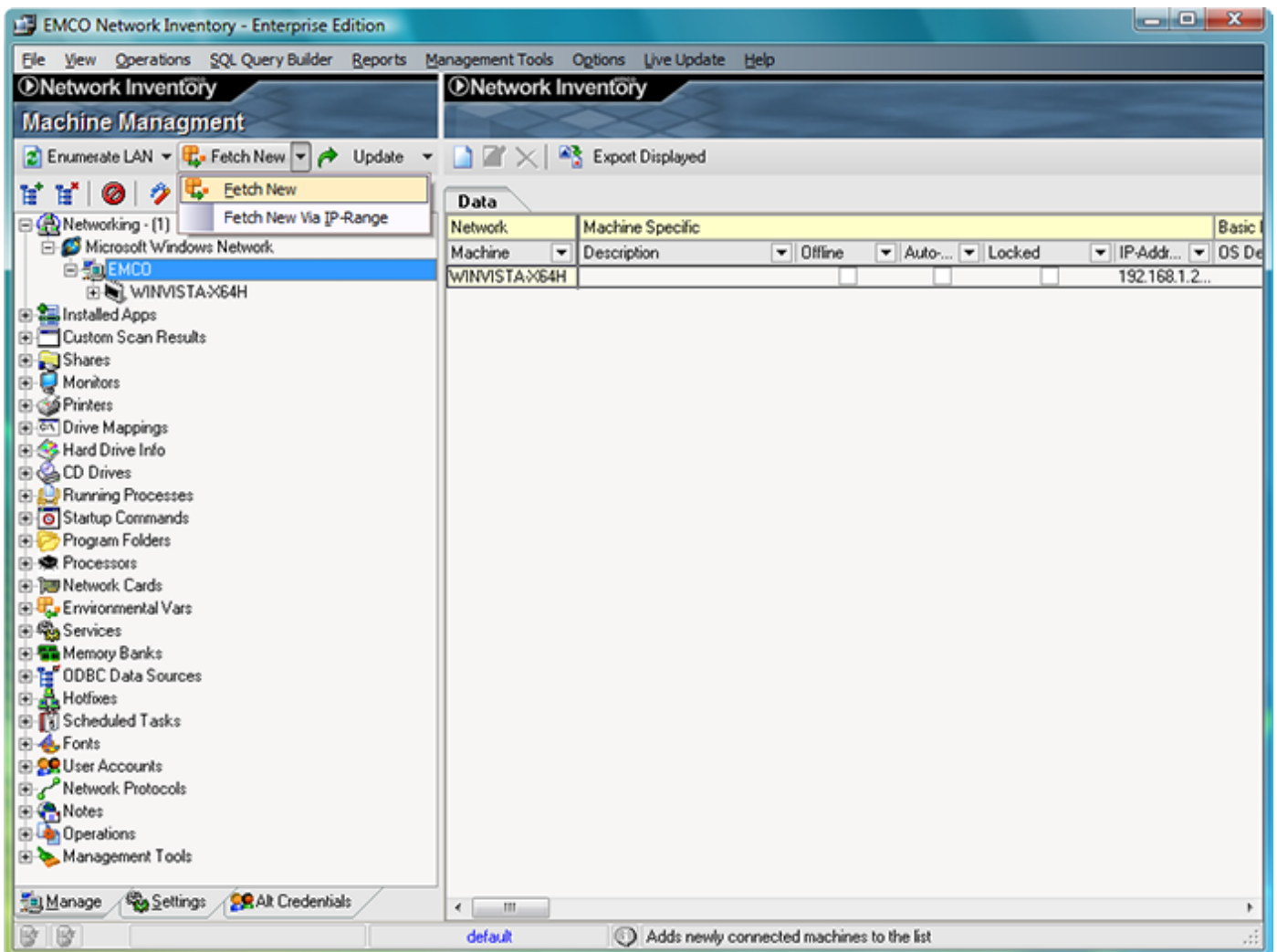
© Copyright 2001-2009 EMCO Software

## Fetch only new added computers since last scan

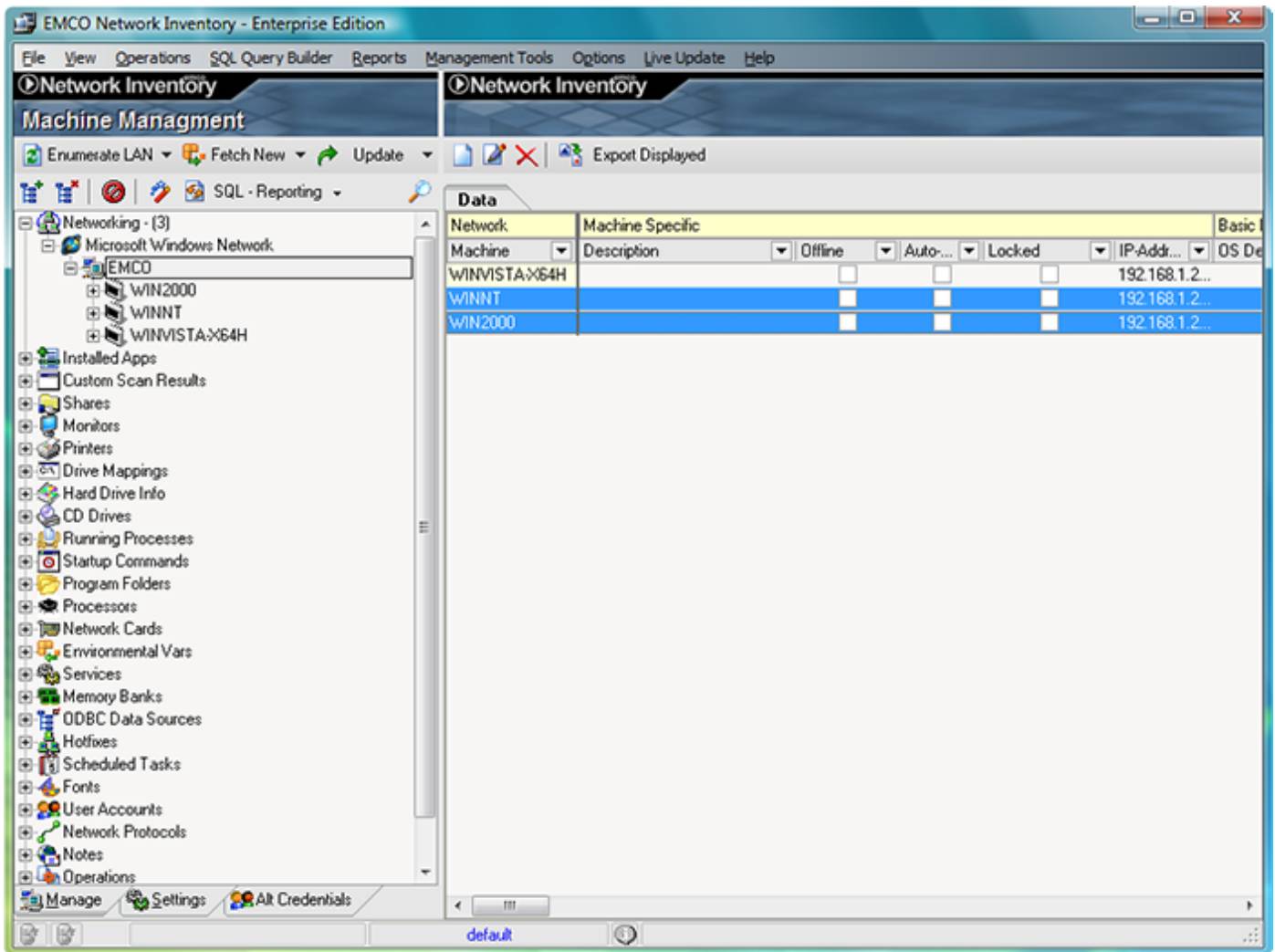
The Fetch New feature in Network Inventory can be very useful when you need to find computers that were not enumerated from the last scan, computers that were not attached to the network, like a laptop for instance. This feature will scan your network for computers similar to the **Enumerate LAN** function but only add computers found that are not existing in your machine tree to the left.

You can either click on the provider to scan all your network for new computers or just click on any domain name for just scan that specific domain.

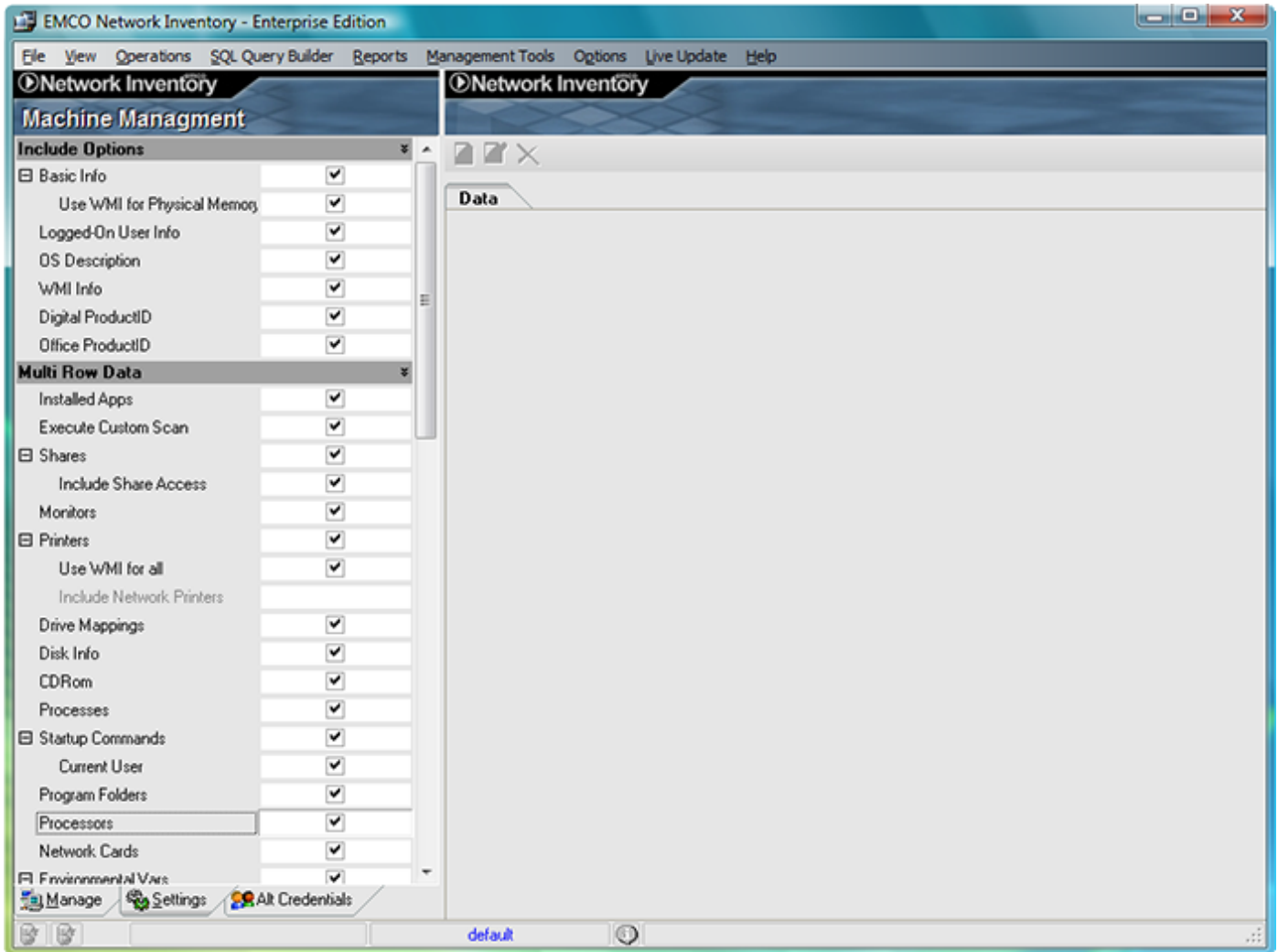
**Fetch New** can be accessed from the machine tree toolbar as this screenshot shows. Click on the **Fetch New** menu button and select the **Fetch New Machines** menu item.



After the click the program will now scan your network and try to find computers that don't exist in your machine tree to the left. When the scanning process has finished it will add them automatically to your machine tree.



From this demo it finds three computers and add them to the machine tree as this screenshot shows. Just remember to have your checkboxes of those informations you want from the program checked before perform this action, then fetch new process will scan and audit them as well.



Like you see this can be very good feature and time saving as well.