

# Knowledgebase Article

---

## How to detect Internet Explorer version using Custom Scan

© Copyright 2001-2009 EMCO Software

## How to detect Internet Explorer version using Custom Scan

### How to detect Internet Explorer version using Custom Scan

The Internet Explorer application is not detected from the default scan in Network Inventory 3.x because it is not displayed under the operating system's Add/Remove dialog or contained in the registry key.

#### **HKEY\_LOCAL\_MACHINE\SOFTWARE\Microsoft\Windows\CurrentVersion\Uninstall**

Most installed applications are registered under the Uninstall key, but for those that are not registered search queries can be created using the Custom Scan Criteria feature in Network Inventory.

This online tutorial will demonstrate how to scan for the Internet Explorer program and fetch its version as well.

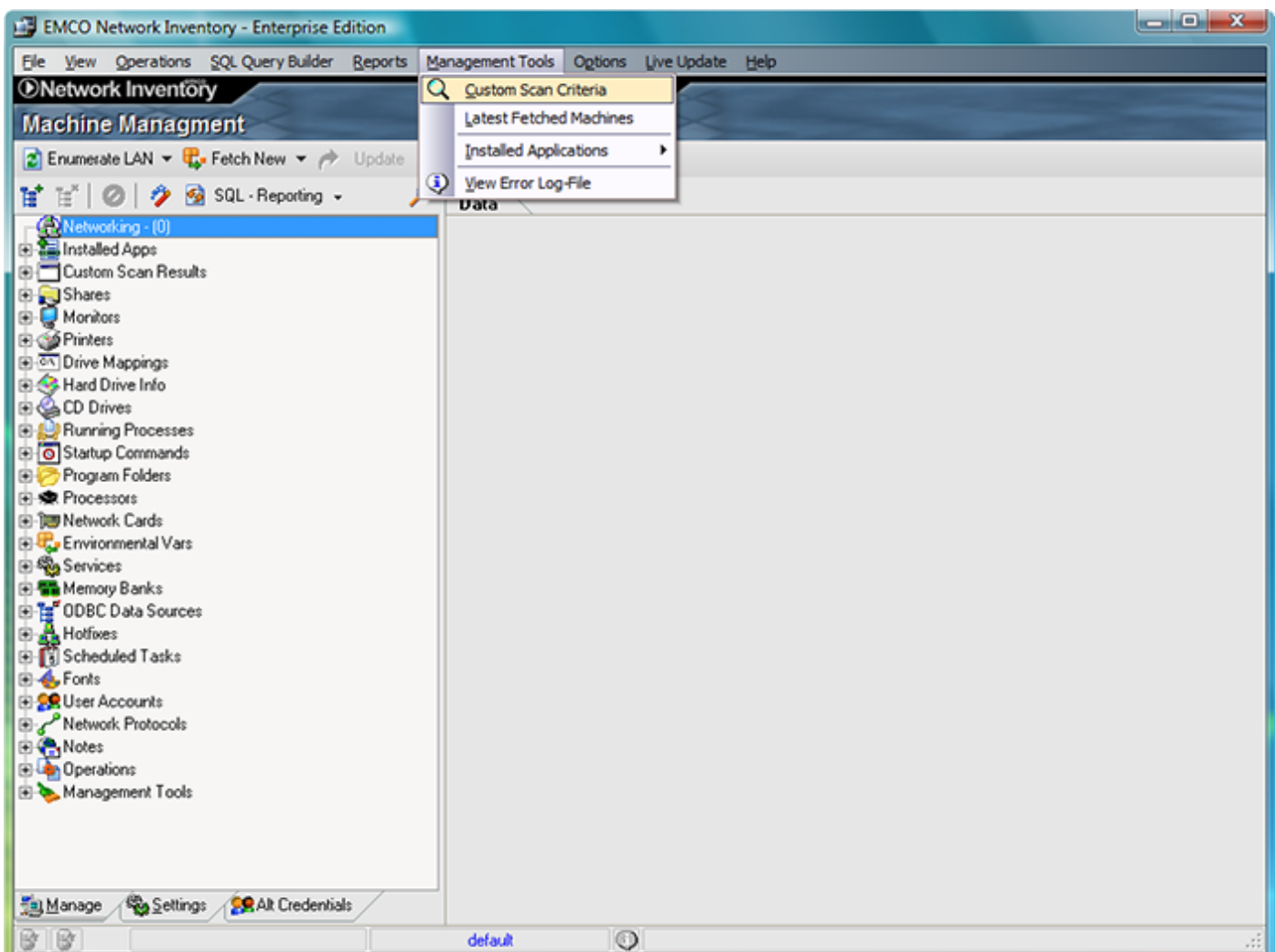
Emco has a Custom Scan export file that can be downloaded with all the latest Internet Explorer versions. Simply download the file below and Import it into the Custom Scan Criteria dialog.

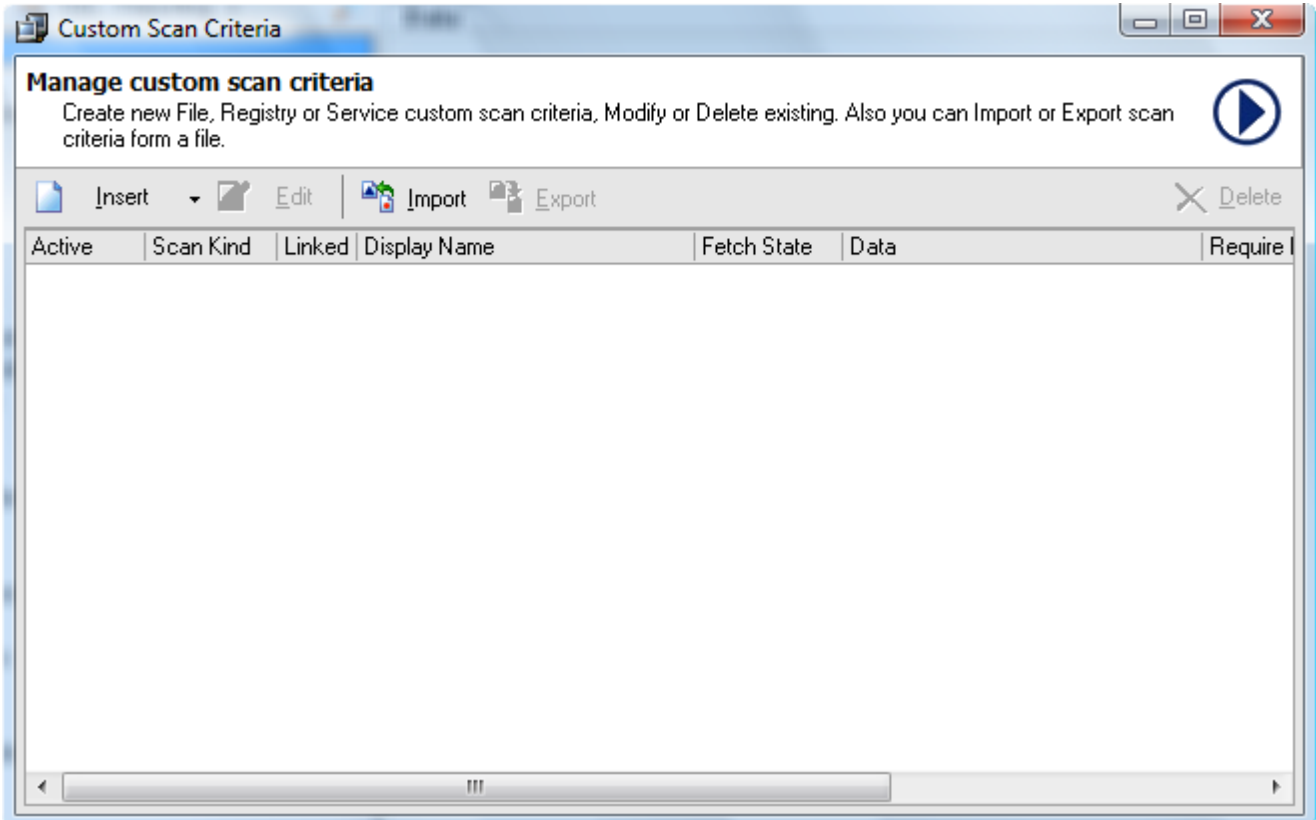
### Internet Explorer Versions – Custom Scan Download Link

<http://www.emco.is/download/support/products/network-inventory/InternetExplorerVersions.csc5x>

After the download, copy this file to your Network Inventory installation folder (which will default to: %programfiles%\EMCO Network Inventory) and then open the main program.

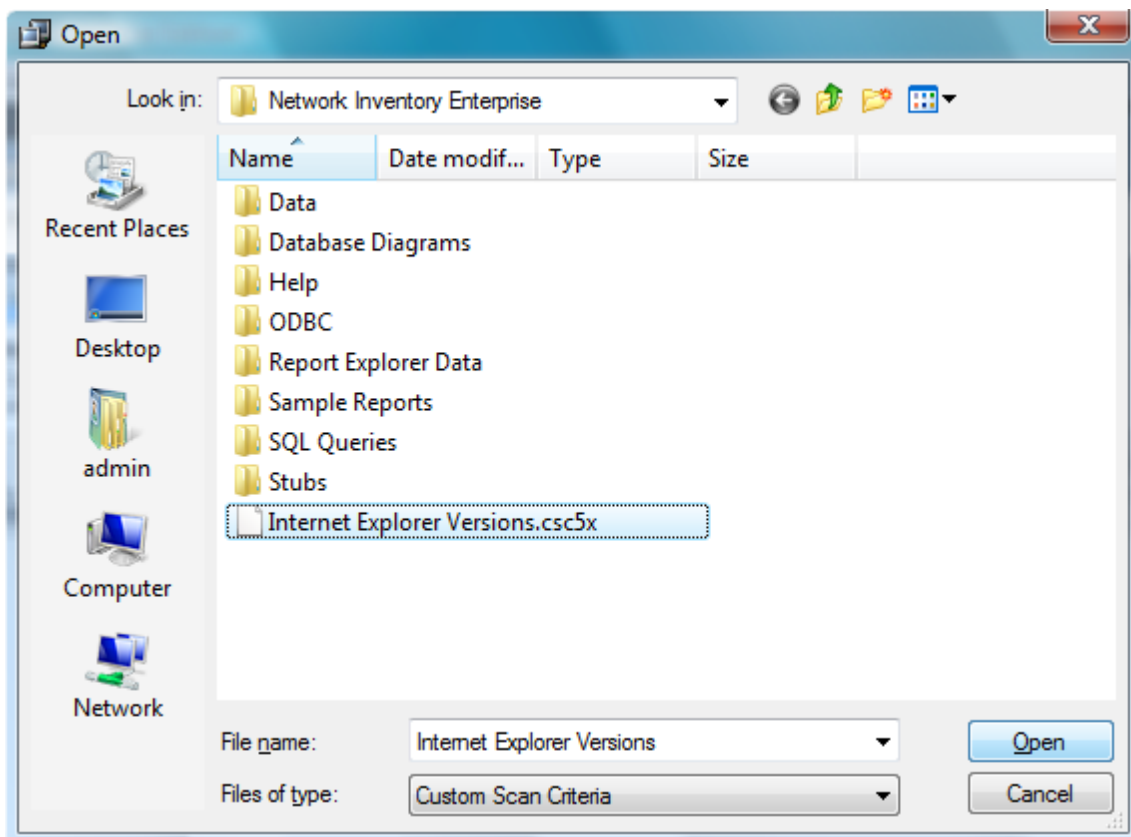
Next, click on the Custom Scan Queries menu and select Custom Scan Criteria. The Custom Scan Criteria dialog box will open, where custom queries can be managed for Files, Registry, Service existence, and more.

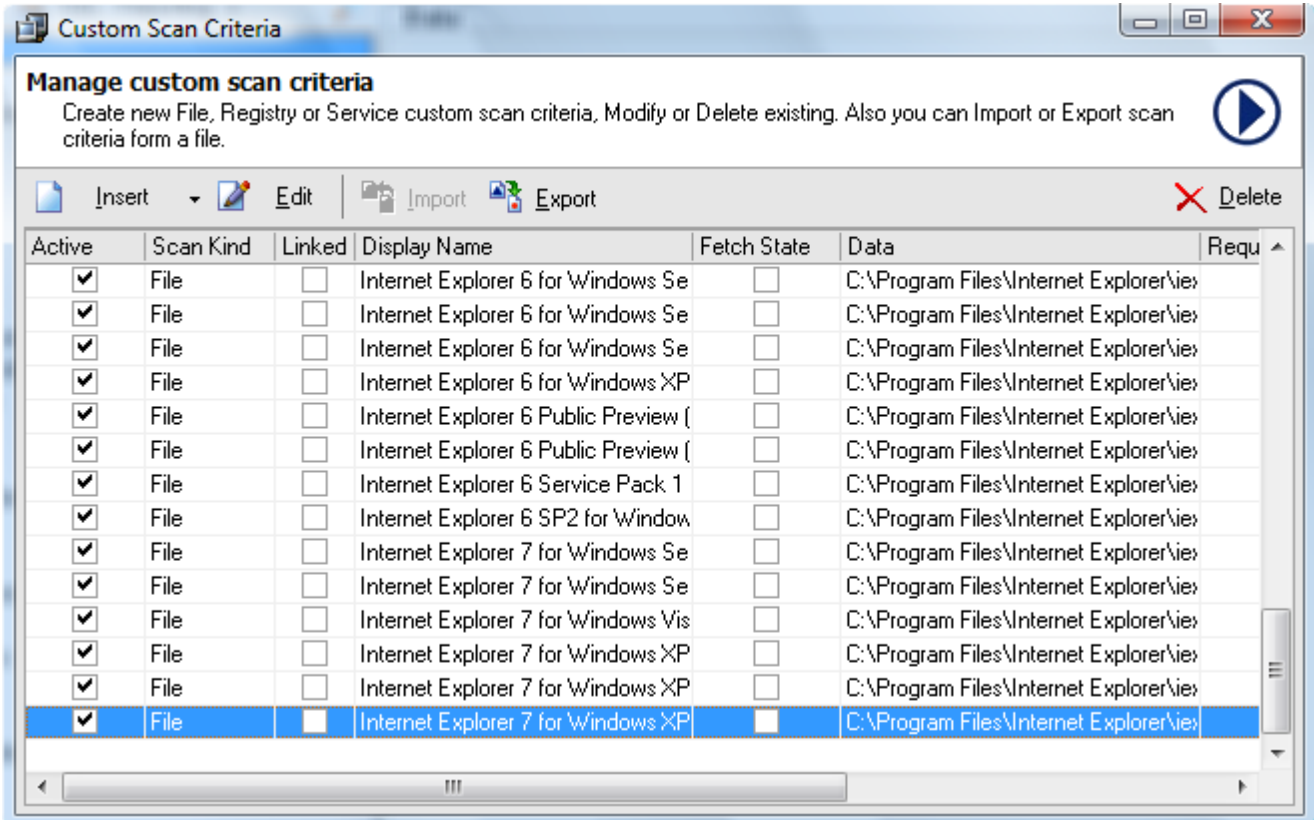




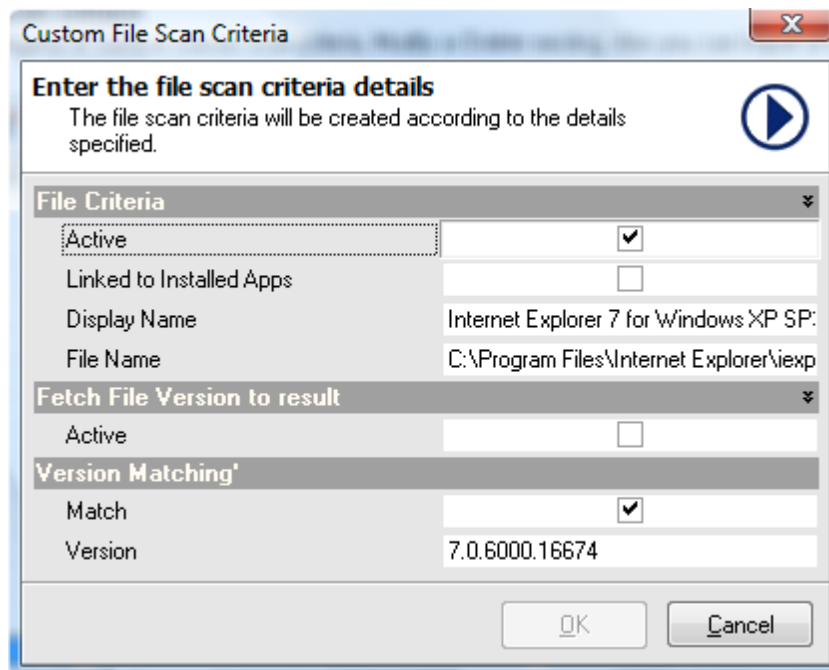
To Import the Internet Explorer Versions file into the Custom Scan dialog, click on the Import button and locate the download file.

Internet Explorer Versions.csc5x

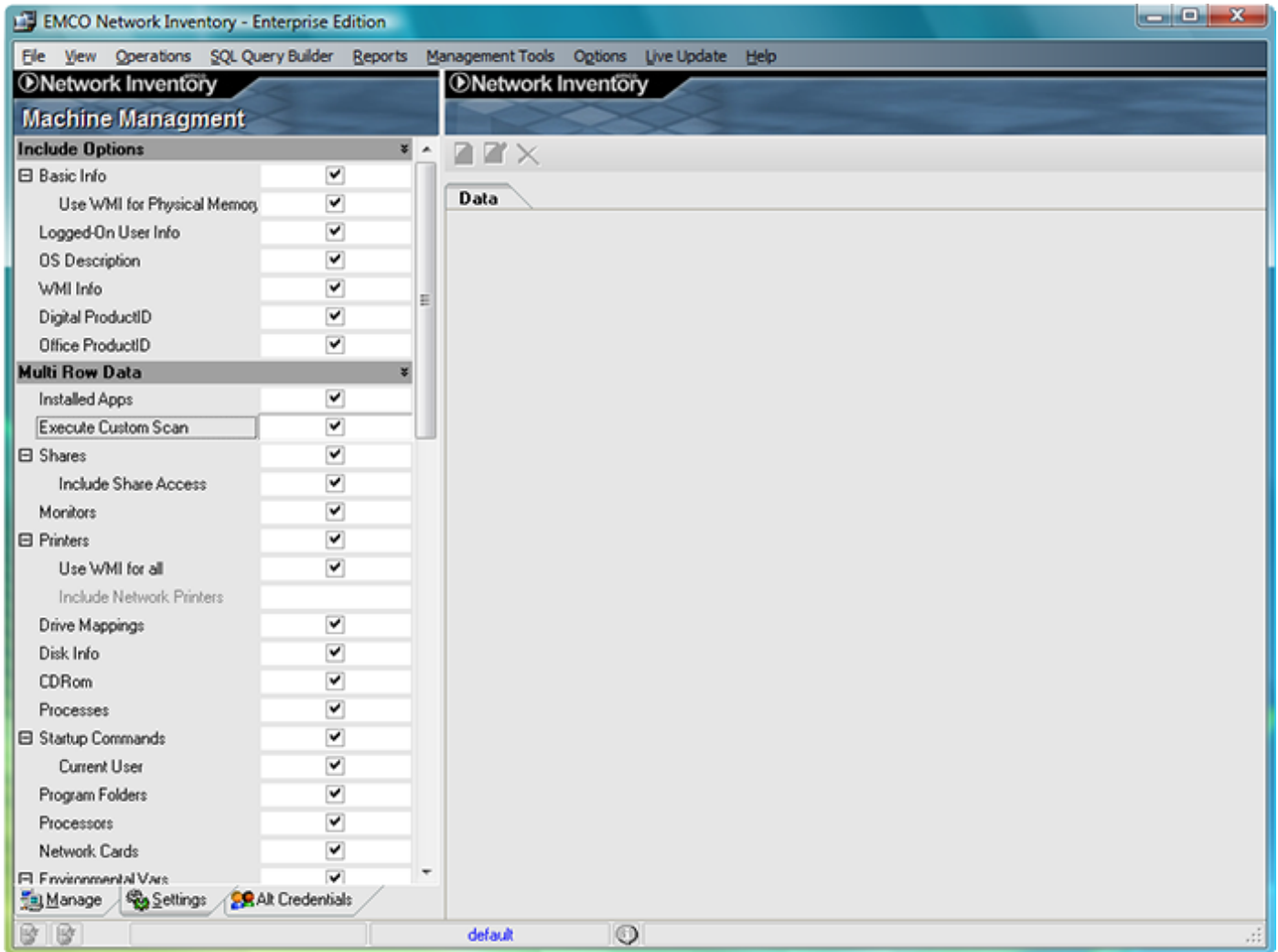




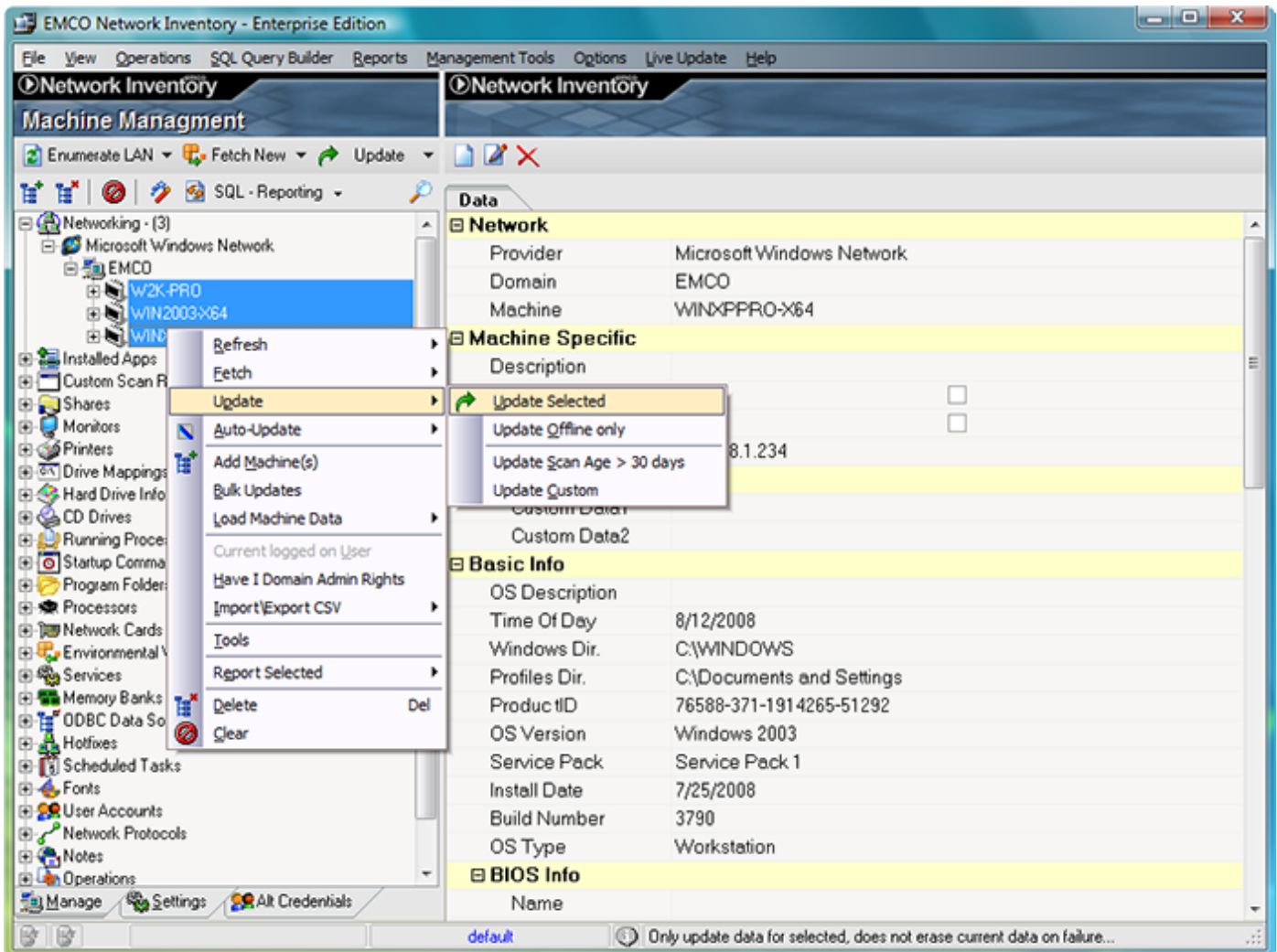
After the Import, Custom Scan items will display in the Custom Scan Criteria dialog box. By double-clicking on any item in the Custom Scan Criteria dialog box, the Customer File Scan dialog box can be displayed, where any of the available values can be modified.



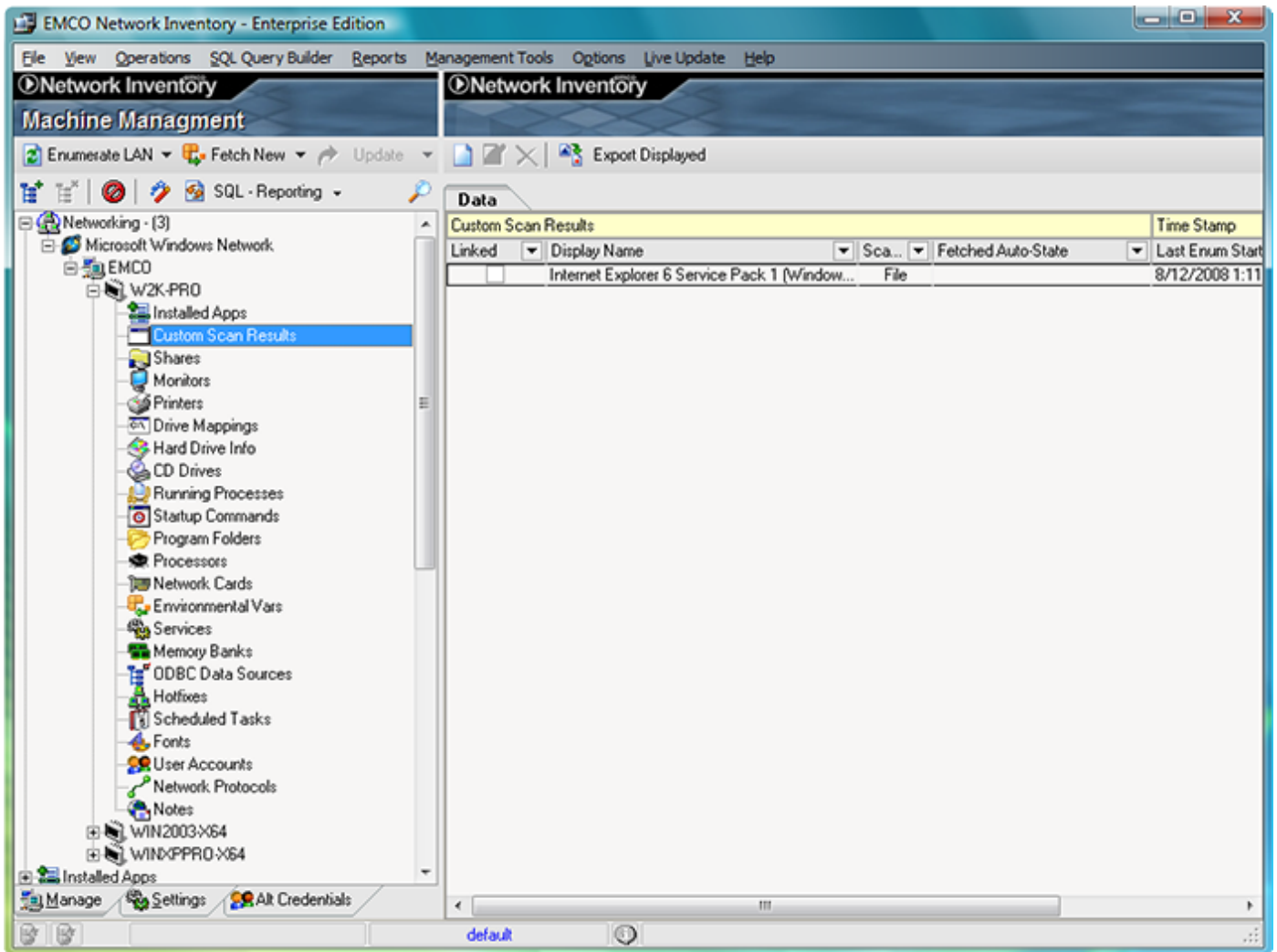
The Execute Custom Scan checkbox must be selected for the Execute Custom Scan to work within the Network Inventory program. The checkbox is located under the Options tab at the bottom of the main form. The scanning process will not execute unless the Custom Scan checkbox is selected.



Next, a simple scan of three computers from the EMCO domain will be demonstrated, and Custom Scan results shown. Right mouse click on the selected computers, and the select Update from the popup menu that displays. Select Update Selected from the resulting submenu. All computers to be scanned must be selected for the scan to be performed.



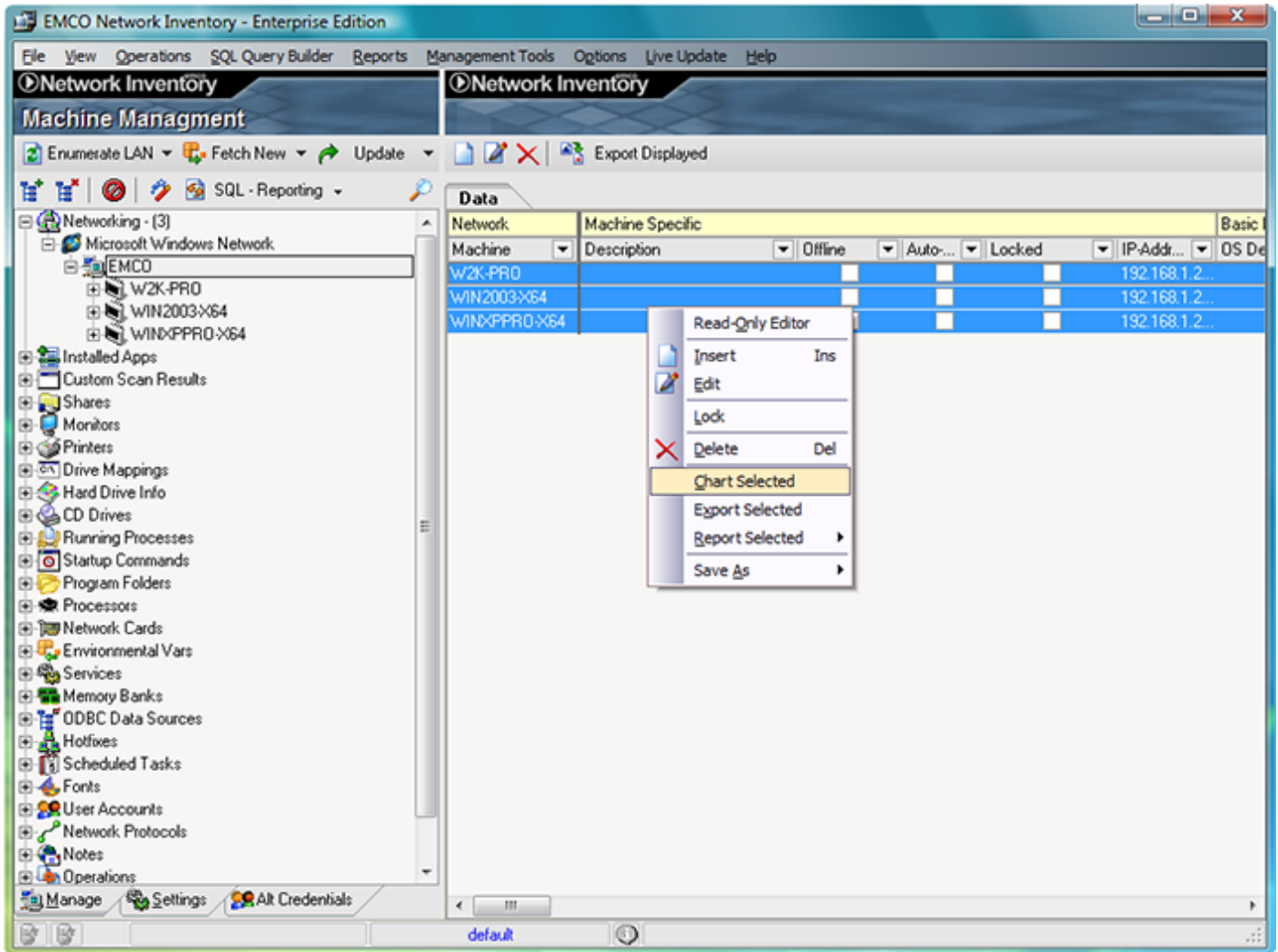
After the scanning process is complete, locate the Custom Scan tab from the right panel to display the scan results.



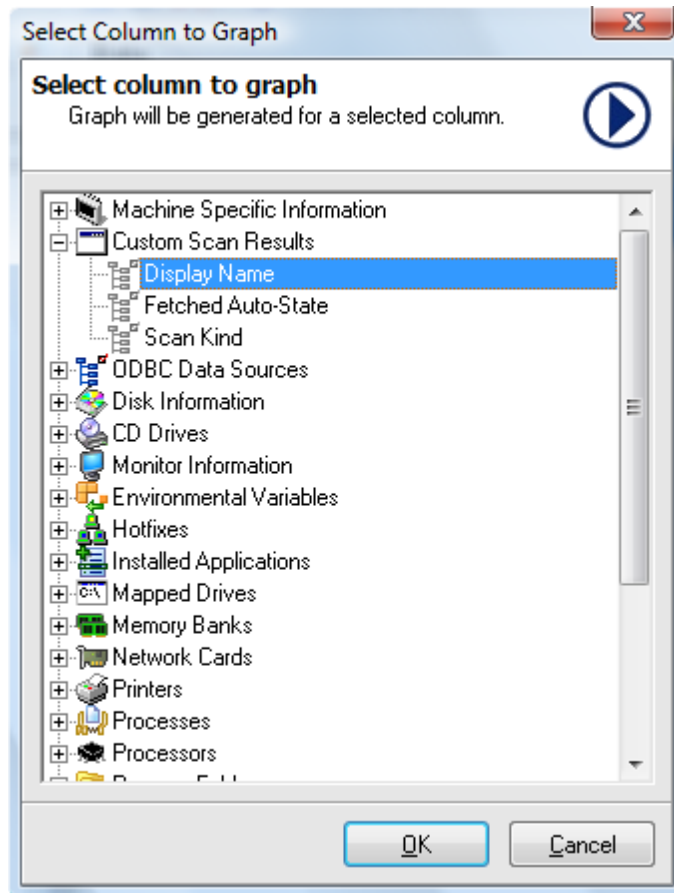
As can be seen in the screen shot above, the Custom Scan Criteria feature in Network Inventory provides options allowing users to scan for any File, Registry Value, and Service Name existence.

Next, the system's ability to Chart the Custom Scan results will be demonstrated to show a better picture of the Internet Explorer versions.

Locate the Machine tab from the right panel and multi select those computers to be charted. Right mouse click to display the pop-up menu and select the Chart Selected menu item. The Select Column to Graph dialog box will display.



After click on Chart Selected menu item you will get this Column selector dialog where you can select the Chart item you want to chart on, we select Display Name and click on the OK button.



Select the item to be charted, select Display Name, and click on the OK pushbutton. The Custom Scan results display in a nice-looking Chart format.



In order to get the count on each item, the results can be exported to Excel by selecting the Export Data item from the File menu.

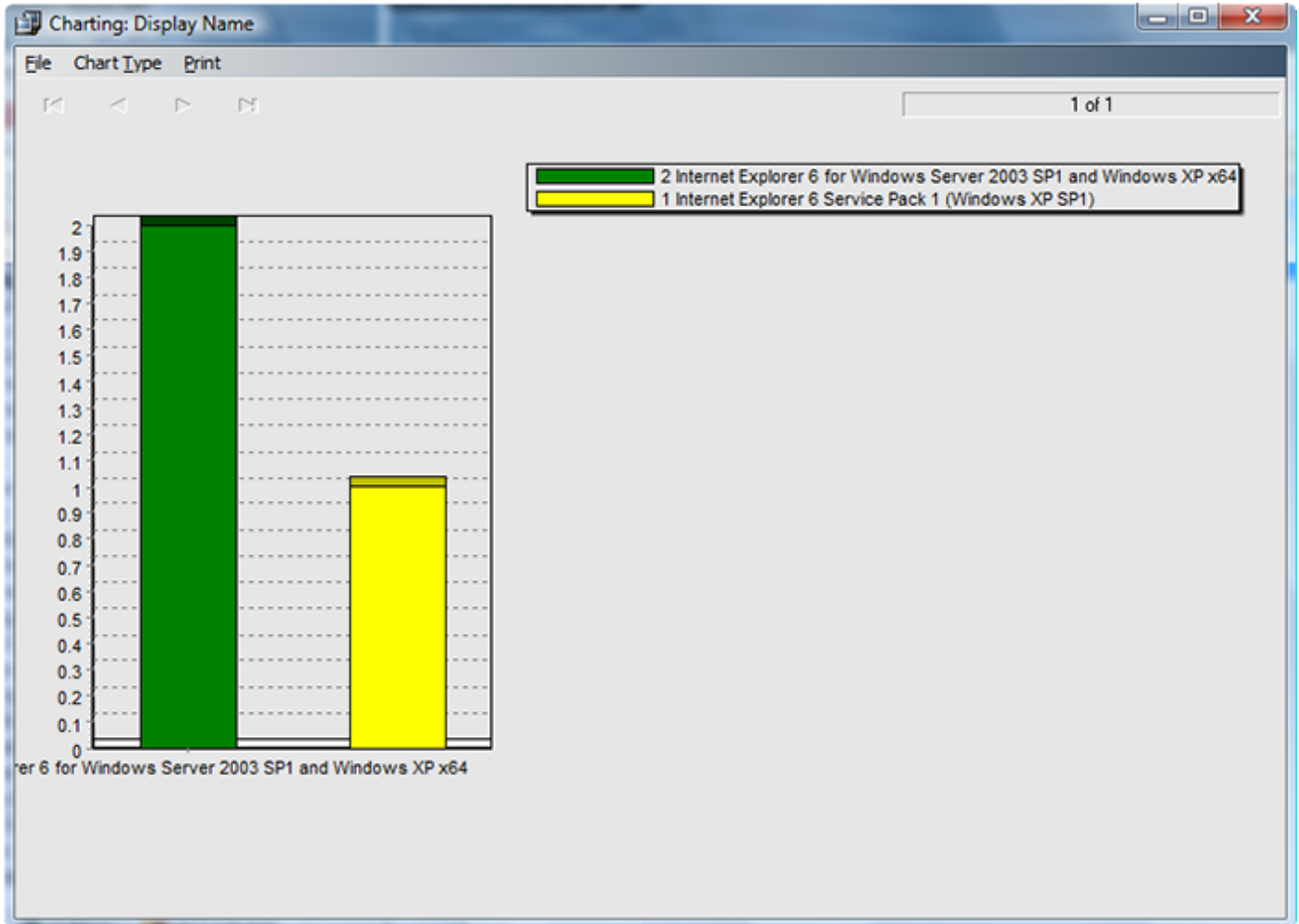
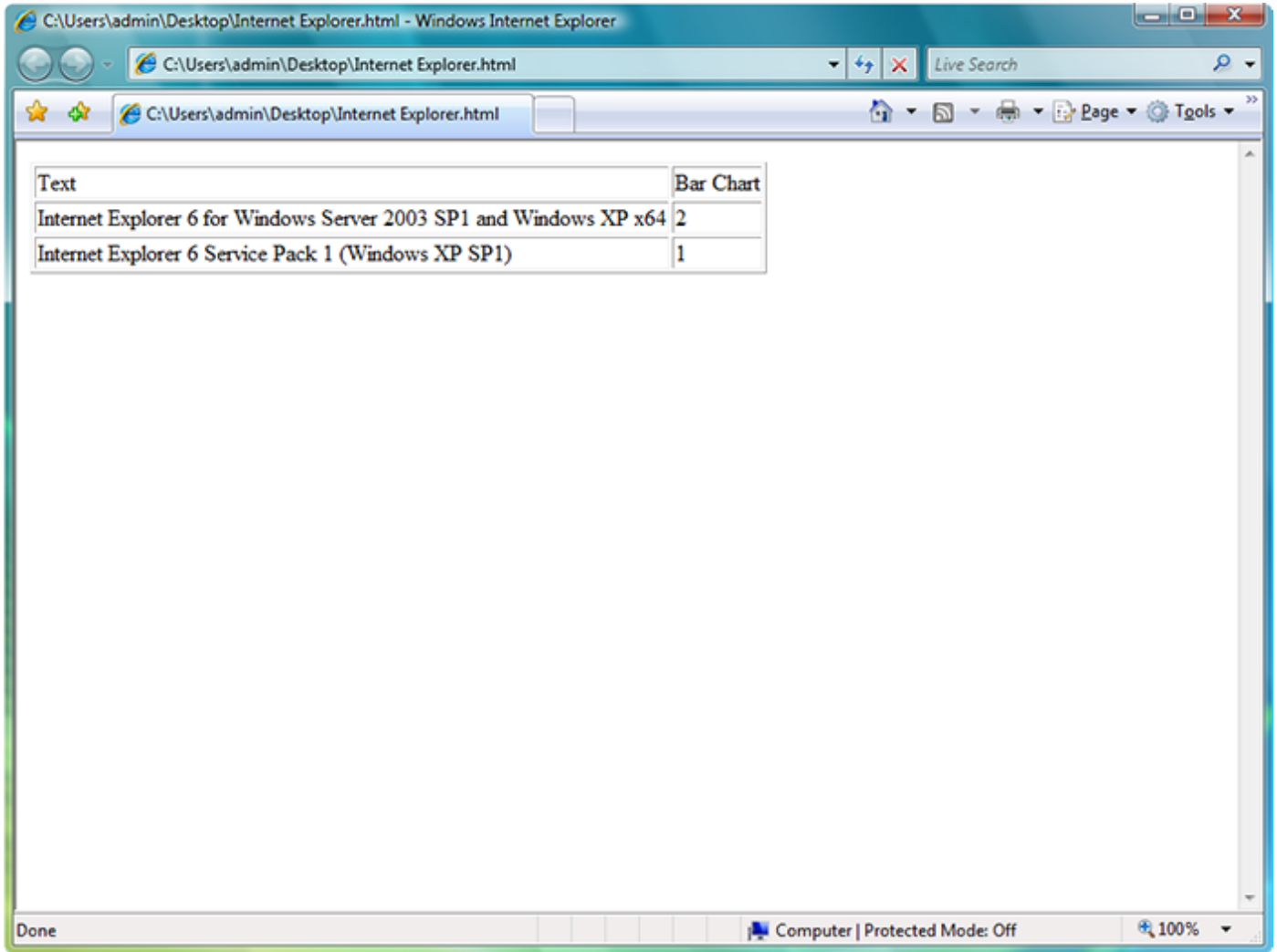


Chart results exported tohtml to get count on each item.



### Reference sites for Internet Explorer version numbers

<http://www.codeproject.com/shell/detectie.asp>

<http://support.microsoft.com/default.aspx?kbid=164539>