

# Knowledgebase Article

---

## How to use SQL Query Builder in NI

© Copyright 2001-2009 EMCO Software

## How to use SQL Query Builder in NI

EMCO Network Inventory 5 provides a built in SQL Query builder that allows you to build more comprehensive SQL queries to fetch your required information for the Network Inventory database. So now you can get the information depending on your requirements.

When you perform a scan operation in EMCO Network Inventory 5 it collects different useful information for available machines on your network and store it in a local database on your machines. Although EMCO Network Inventory provides basic and most used queries as built in queries but some times you may need to collect more detailed and customized information depending on your needs; so here comes EMCO Network Inventory 5's build in SQL Query Builder.

You can either select the tables and the fields that you want to process to generate queries visually or you can type your queries in query builder and click execute button to see results.

In this tutorial we will show how you can benefit form powerful features of built in SQL Query Builder in EMCO Network Inventory 5.

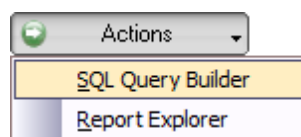
### **The following topics will be covered in this tutorial:**

- ▣ Open database
- ▣ Load Query
- ▣ Save Query
- ▣ Loading SQL query to Query Builder
- ▣ Using Available Queries in EMCO Network Inventory
- ▣ Creating queries using visual Query Builder
- ▣ Execute SQL Query
- ▣ Export scan results

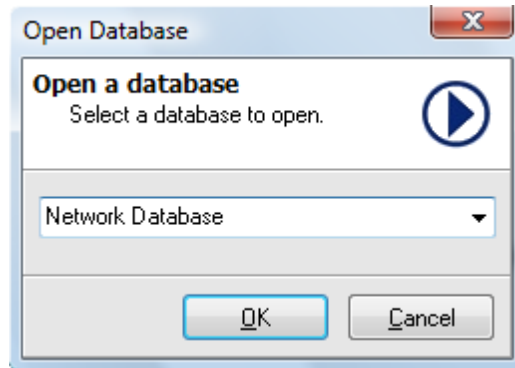
### **Open database**

**To open database in EMCO Network Inventory 5 query builder perform the following steps:**

1. Click down arrow icon shown on the right of SQL Report Explorer.
2. Click the SQL Query Builder menu item form the pop-up menu.



3. Query Builder dialog appears on the screen.
4. Click Open Database button.
5. Open database dialog appears on the screen.
6. Select the required database from the database drop-down list.

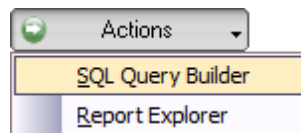


7. Click Ok button.
8. This will load the selected database and all information saved in that database will be available for you.

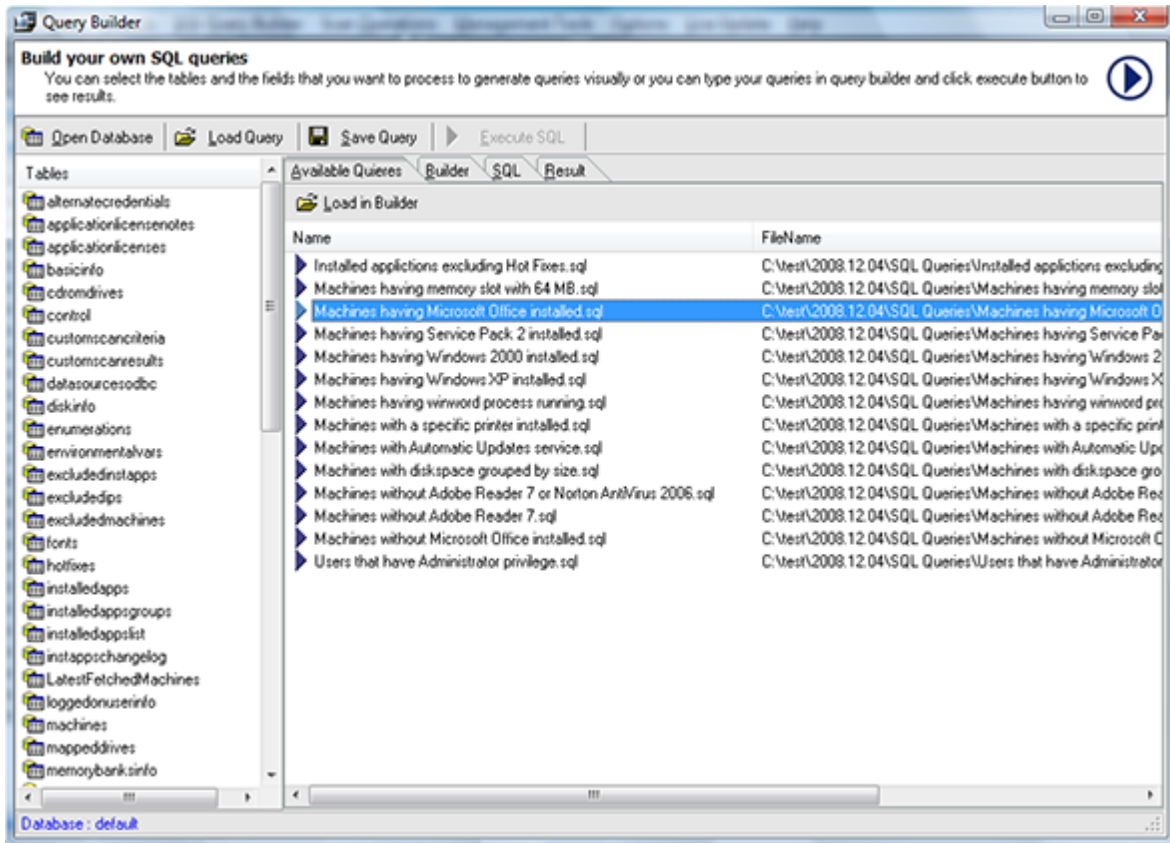
## Load Query

**To load an already saved query in EMCO Network Inventory 5 Query Builder, perform the following steps:**

1. Click down arrow icon shown on the right of SQL Report Explorer.
2. Click the SQL Query Builder menu item form the pop-up menu.



3. Query Builder dialog appears on the screen.
4. Click Load Query button.
5. Load SQL dialog appears on the screen.
6. Browse to the location your SQL file is located, select the required file and click Open button.

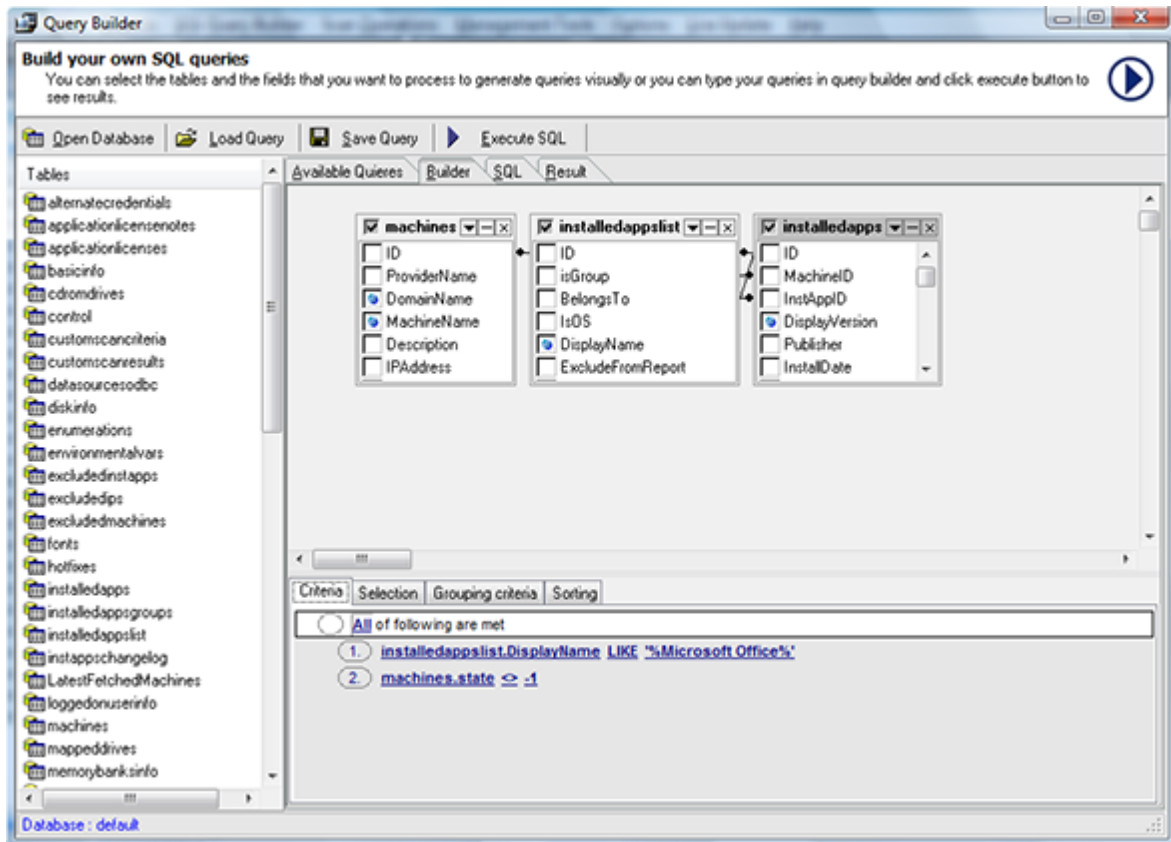


7. This will open the query.

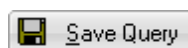
## Save Query

To save a query in EMCO Network Inventory 5 Query Builder, perform the following steps:

1. When you are done with the query click Save Query button in Query Builder dialog.



2. Save SQL File dialog appears on the screen.
3. Type a name for your SQL query file in the File name field.
4. Click Save button.



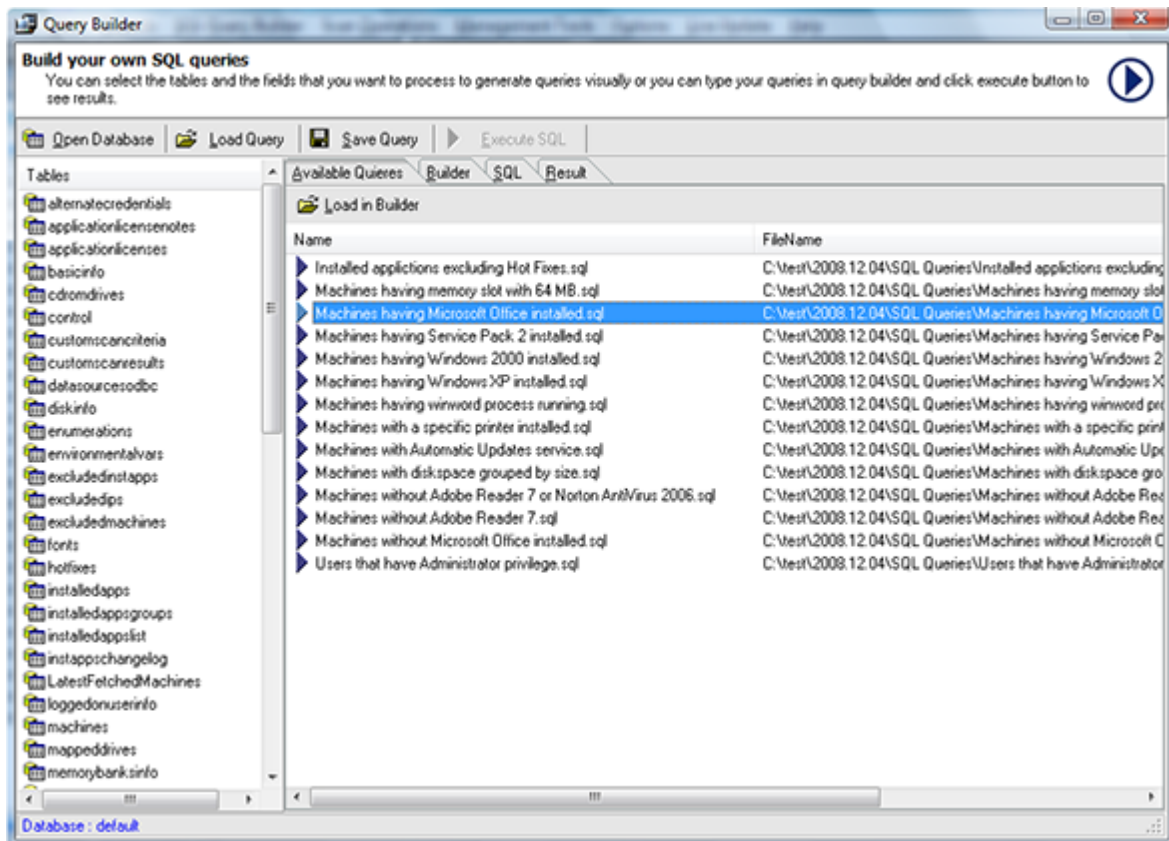
5. This will save your SQL query to the file specified.

## Loading SQL query to Query Builder

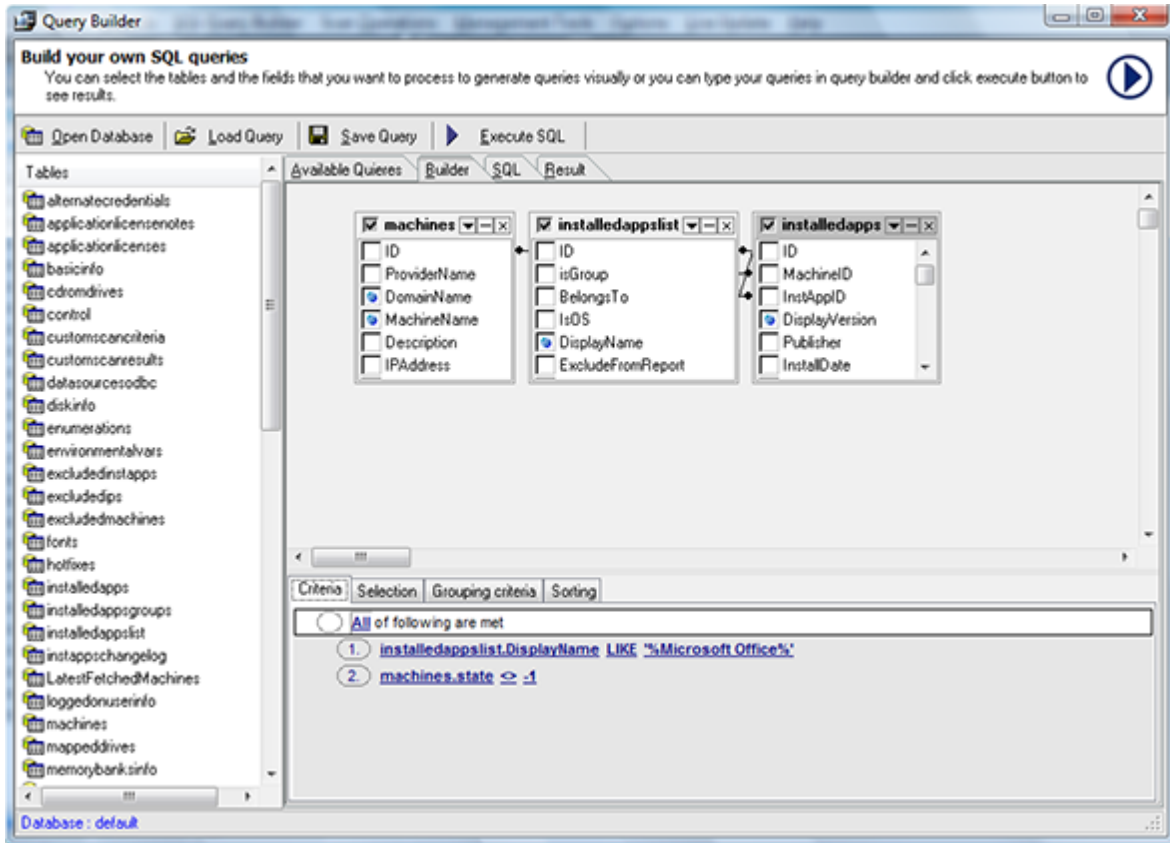
After you have opened your already saved SQL query file in Network Inventory 5 the next step is to load your query to Builder to manipulate or execute it.

**To load SQL Query to Query Builder in EMCO Network Inventory 5 perform the following steps:**

1. After you have opened an already saved SQL query file in Network Inventory 5 switch to Available Queries tab in Query Builder dialog.
2. Select the required SQL Query form the queries list shown under Available Queries tab.
3. Click Load to Builder button located on the tool bar.



4. This will load your selected SQL Query to the Builder.

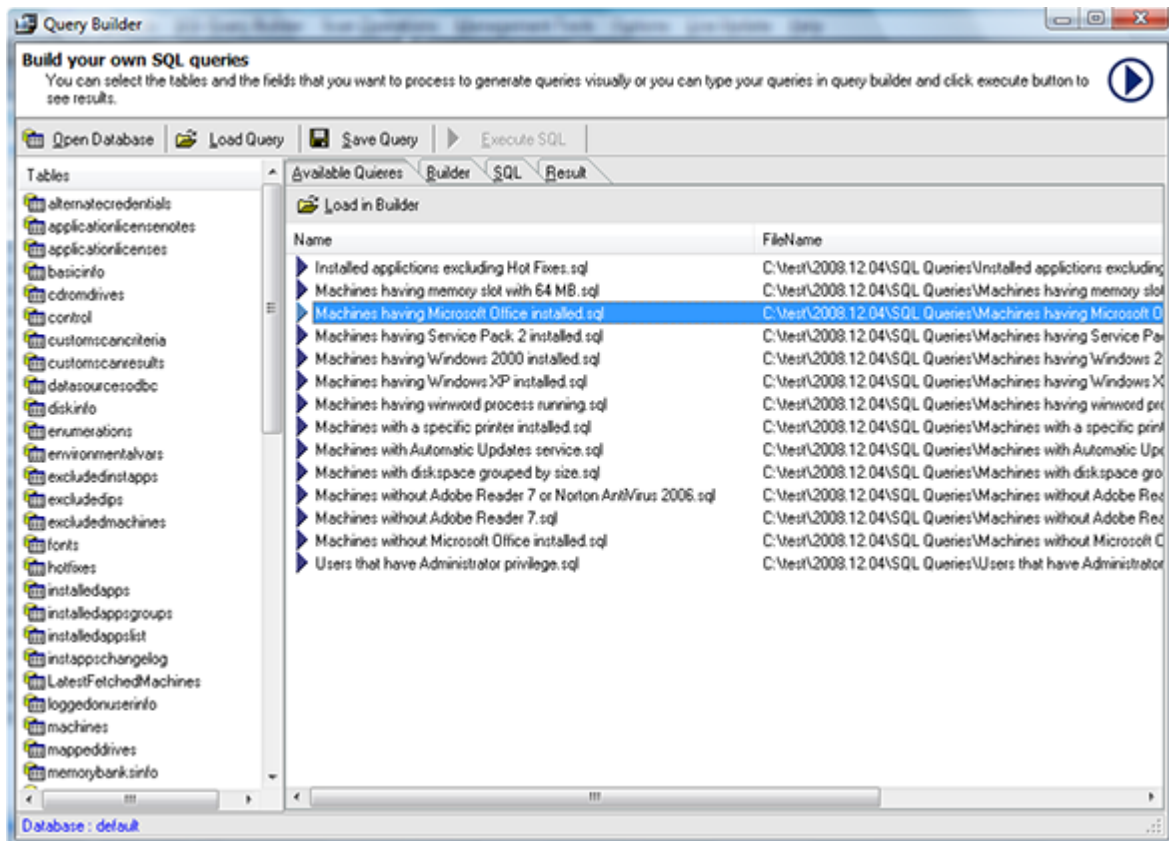


## Using Available Queries in EMCO Network Inventory

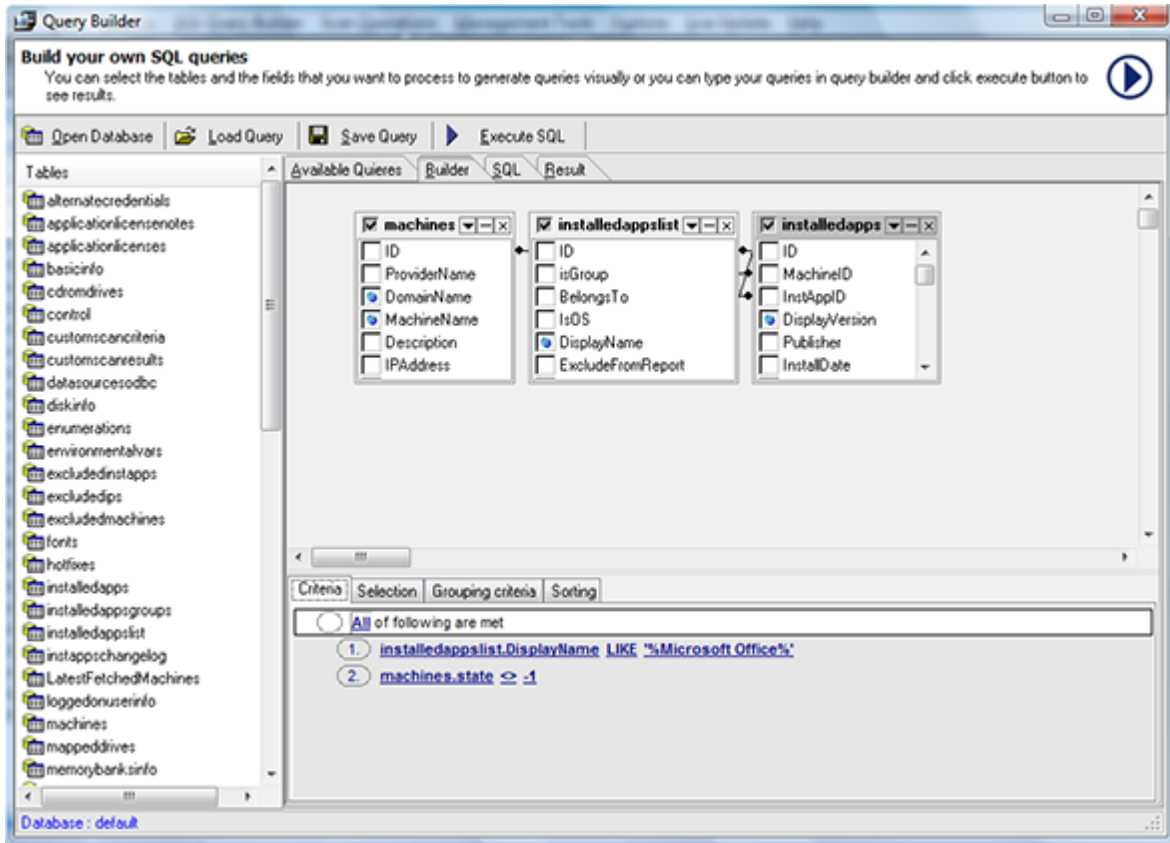
EMCO Network Inventory 5 comes up with basic sample queries that you can use to extract the required information for the database.

**To use available Queries in EMCO Network Inventory 5, perform the following steps:**

1. Switch to Available Queries tab in Query Builder dialog.
2. Select the required SQL Query form the queries list shown under Available Queries tab.
3. Click Load to Builder button located on the tool bar.



4. This will load the selected SQL Query to the Builder.

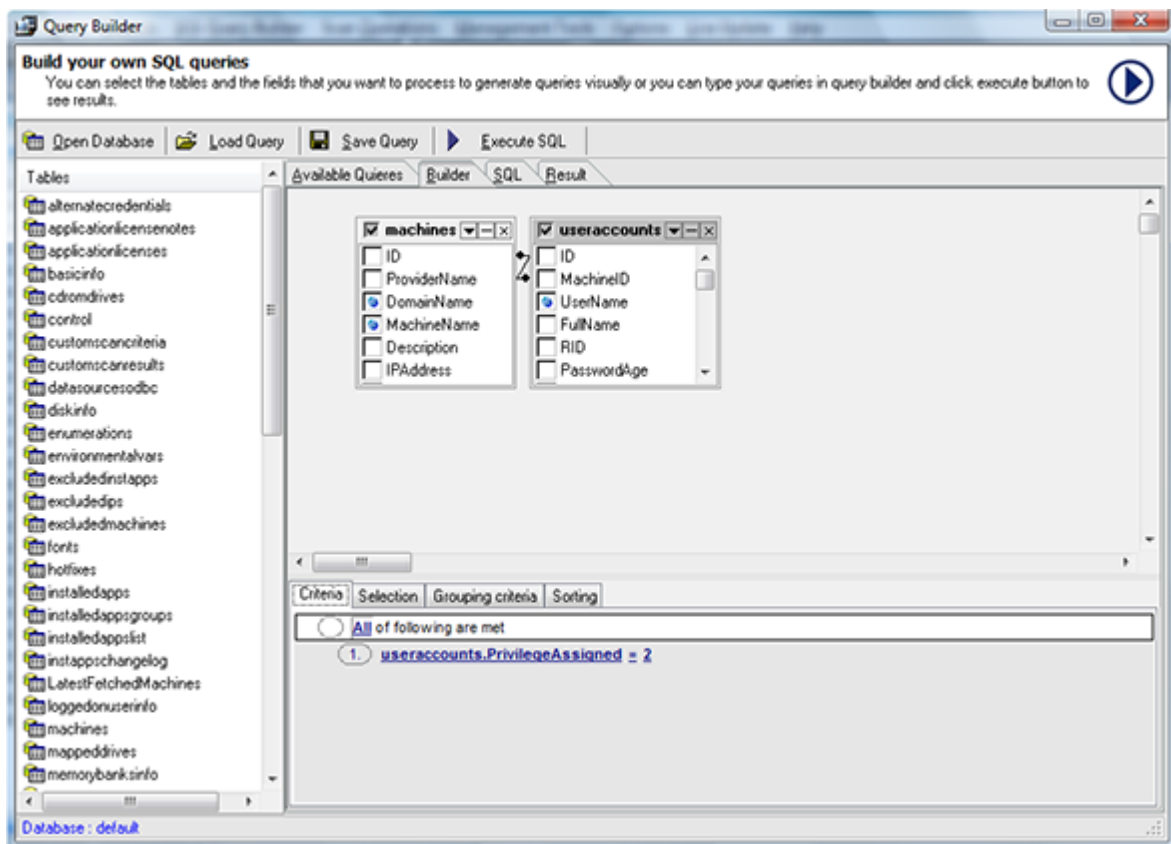


## Creating queries using visual Query Builder

EMCO Network Inventory 5 offers you the built in visual query builder that makes query creation process easy, simple and fast. So now you can create your customized queries to fetch information of your interest without performing any complex operation. Just select the tables that you want to process and the fields that you want to include in the query and you are done.

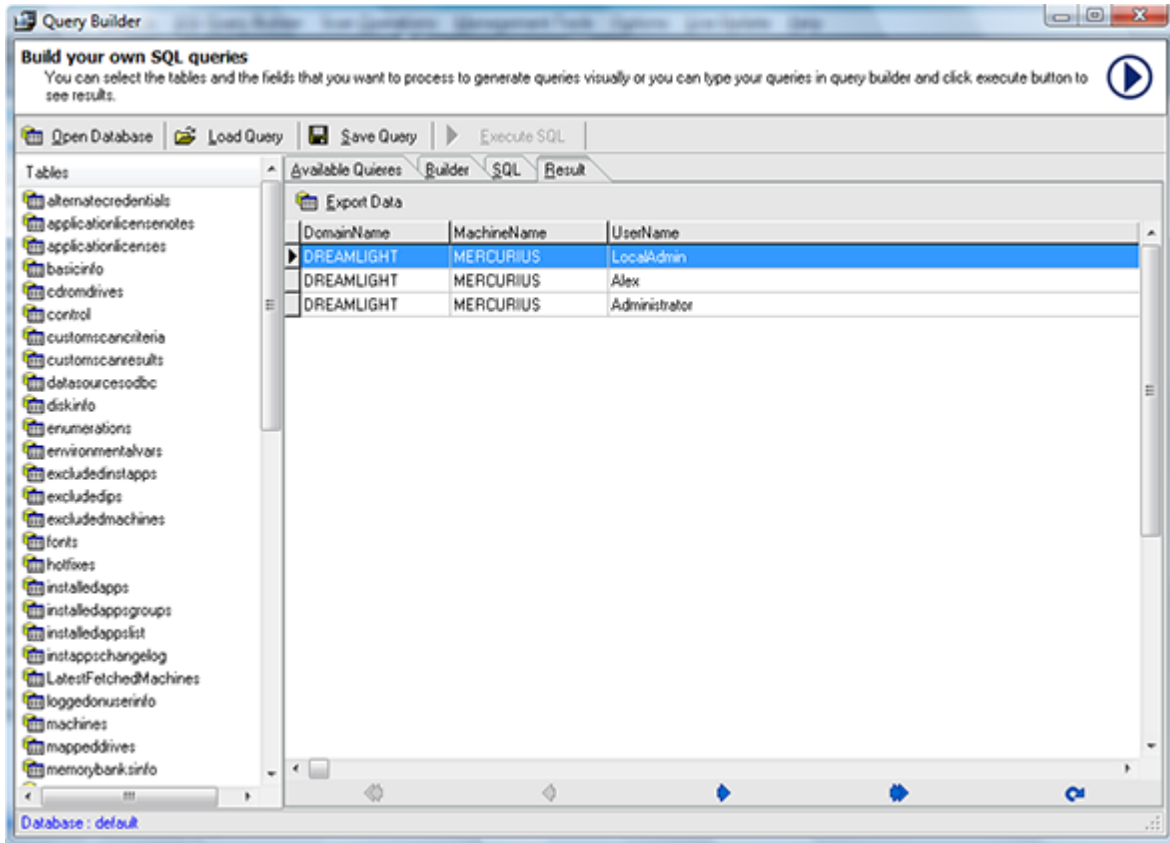
**To create queries using visual Query Builder perform the following steps:**

1. Switch to the Builder Tab in the Query Builder dialog.
2. Select the tables that you want to include in your query by double clicking their names from the tables list shown on the left in Tables Tab.
3. When you double click a table name it appears in the Builder tab.



4. Now you need to specify the fields you want to join the tables. To create a link between the different fields select the required field in one table, drag it over the field of another table you want to link it with and drop it.
5. This will link the tables.
6. To include a table in your query check the check box in that table header just before the table name.
7. Select the fields you want to include in your query by checking the check boxes corresponding to the fields names.
8. After you have created your query click the Execute SQL button to run it.

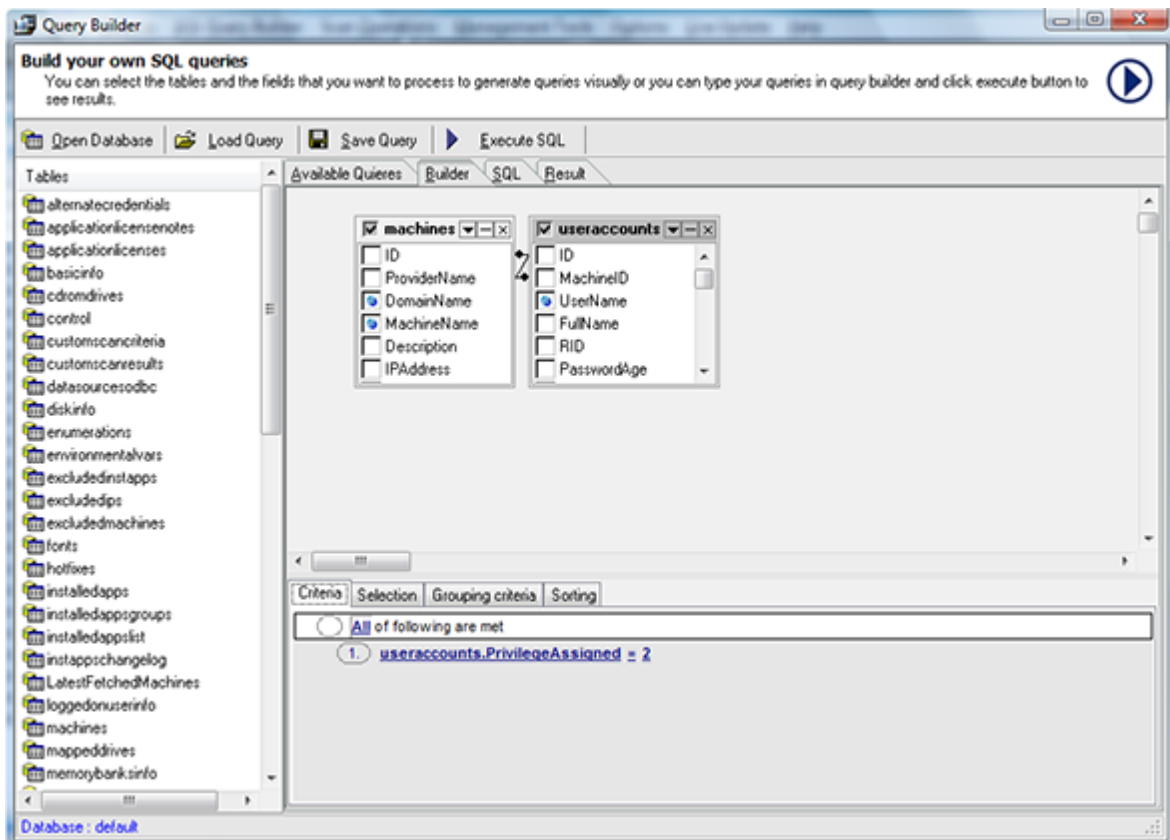
- Switch to the Results tab to see the results of the executed query.



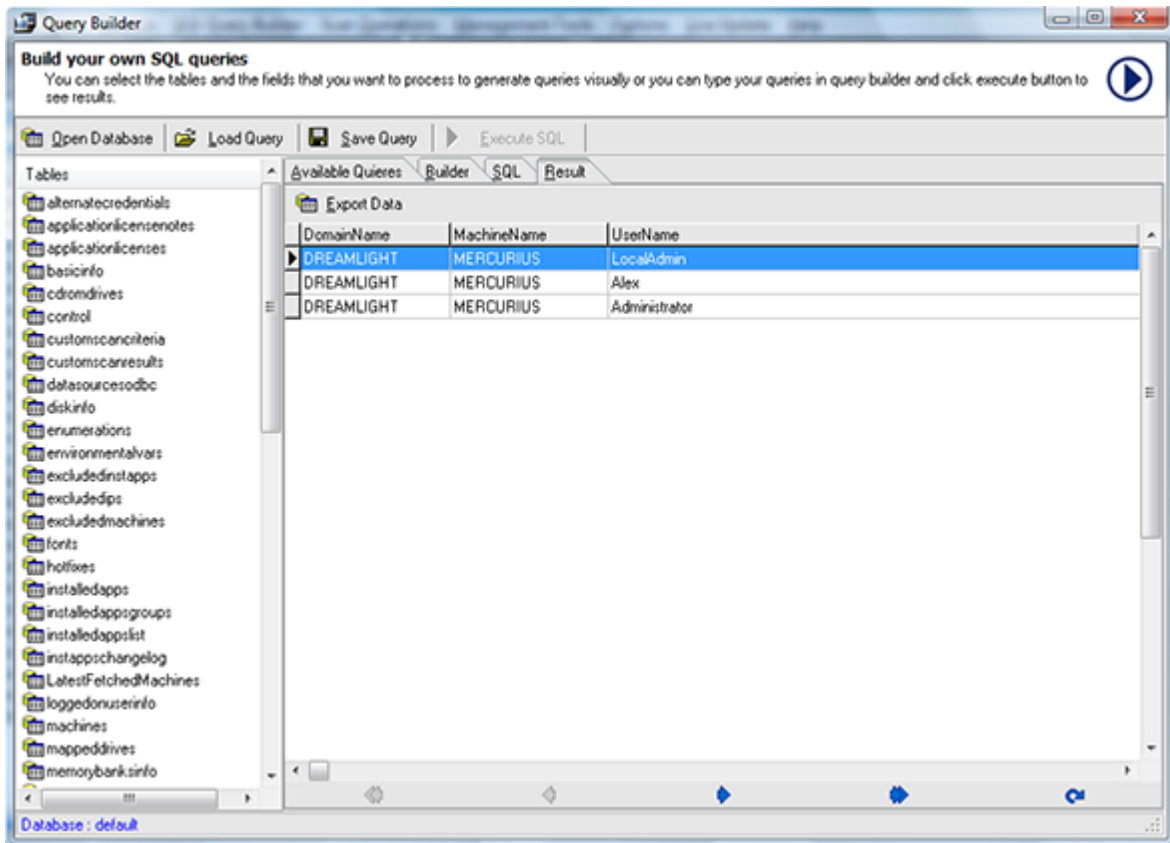
## Execute SQL Query

To execute a SQL query in Query Builder perform the following steps:

- Before executing any query you need to load your query to the Builder.
- After loading the query to the Builder click the Execute SQL button shown on the tool bar.



3. Switch to the Results Tab to see the results of the query.

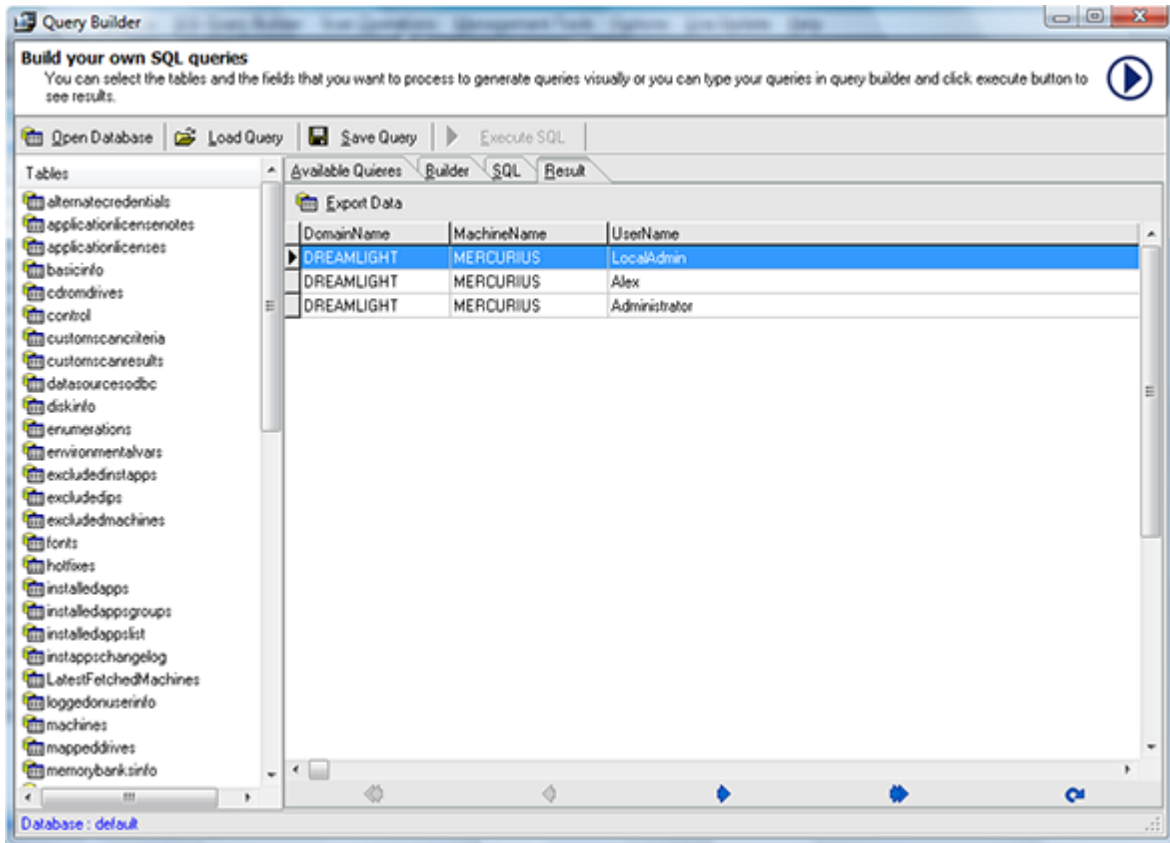


4. The results of your query appear in the results grid.

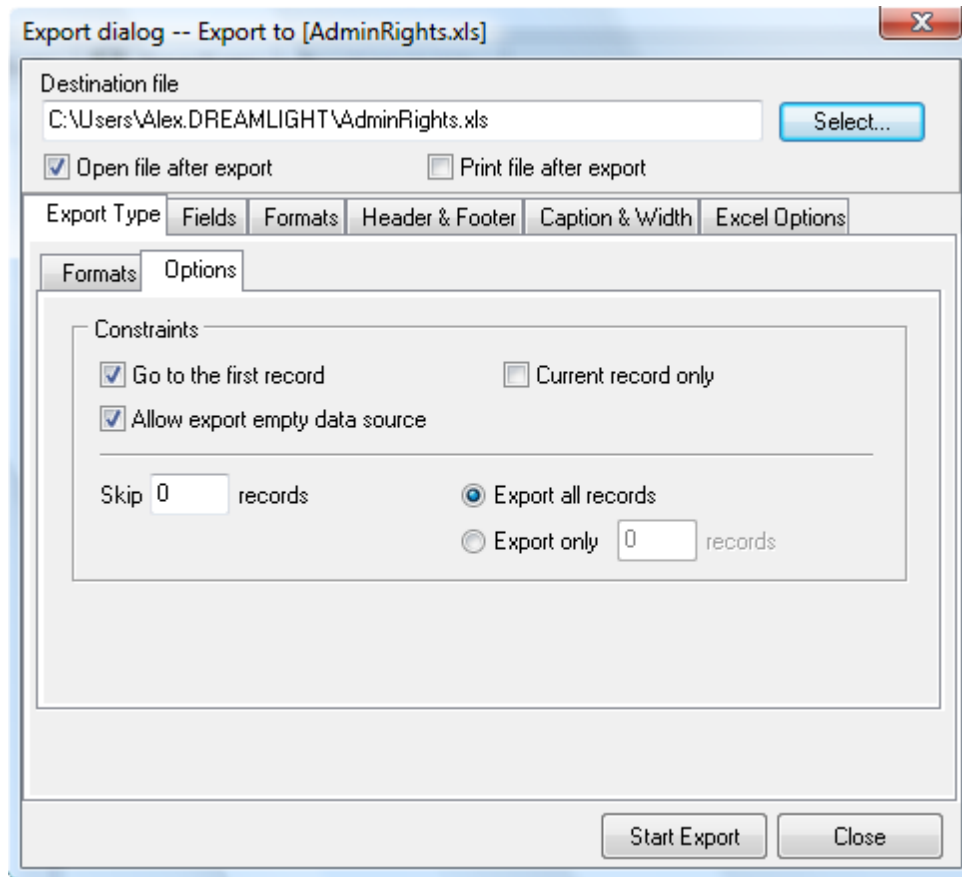
## Export scan results

To export your query results from Query Builder perform the following steps:

1. After you execute your SQL query in Query Builder its results appear in the Results tab.
2. Switch to the Results Tab.

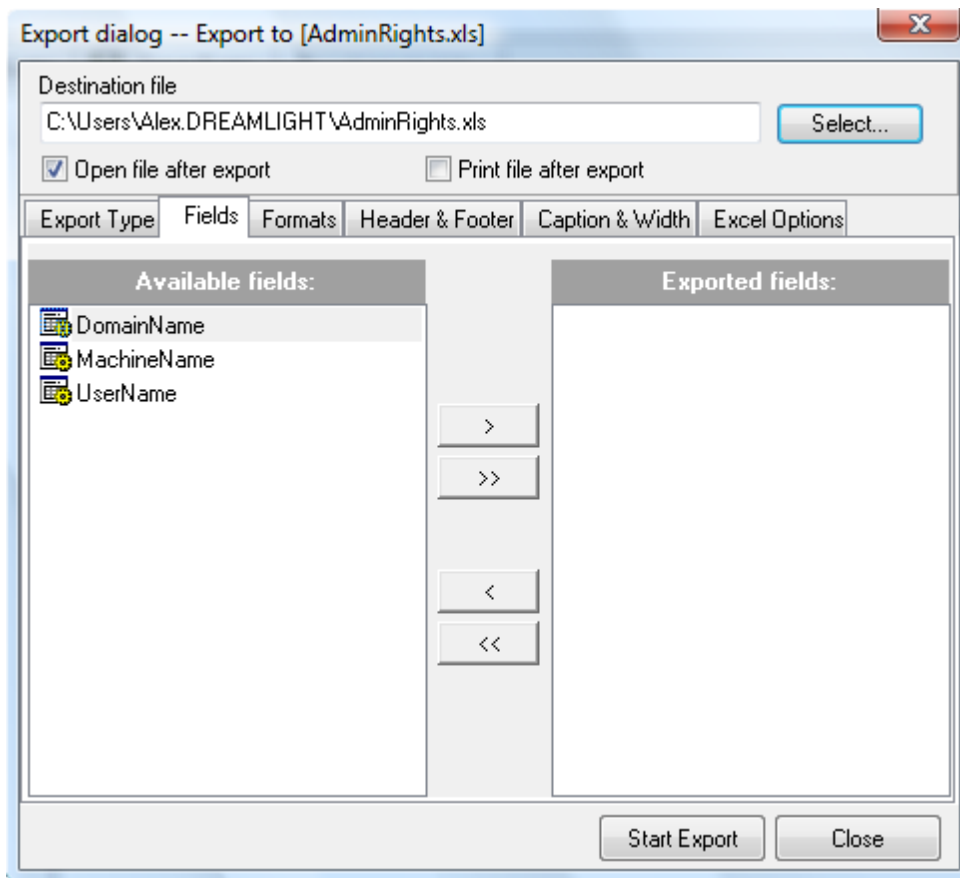


3. Click Export Data button.
4. Export dialog appears on the screen.
5. Switch to Export Type tab.
6. Switch to Formats tab shown under Export Type tab.
7. Select the required file type.



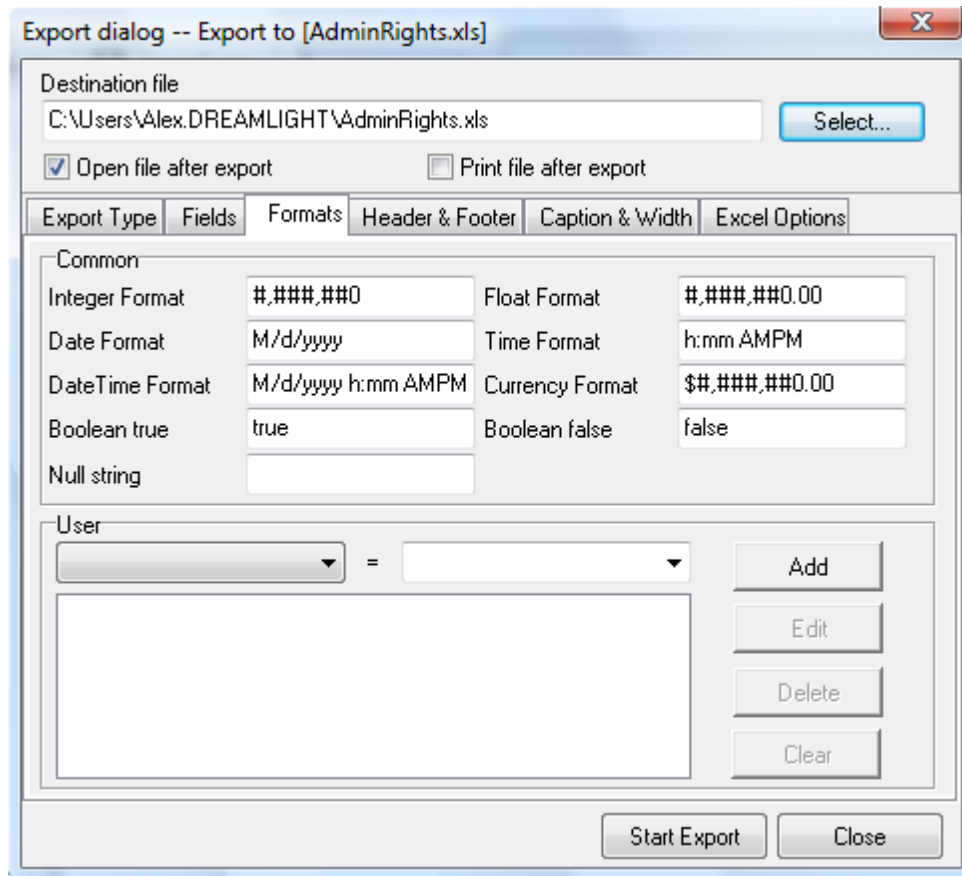
8. Switch to Options tab.

9. Select the required constraints by checking the corresponding check boxes.
10. If you want to skip some record from the scan results type it in the Skip field.
11. To export all records click Export all records radio button.



12. To export selected number of records, click Export only radio button and type the required value in the corresponding field.
13. Switch to the Fields tab.

14. Select the fields that you want to export and click move button.



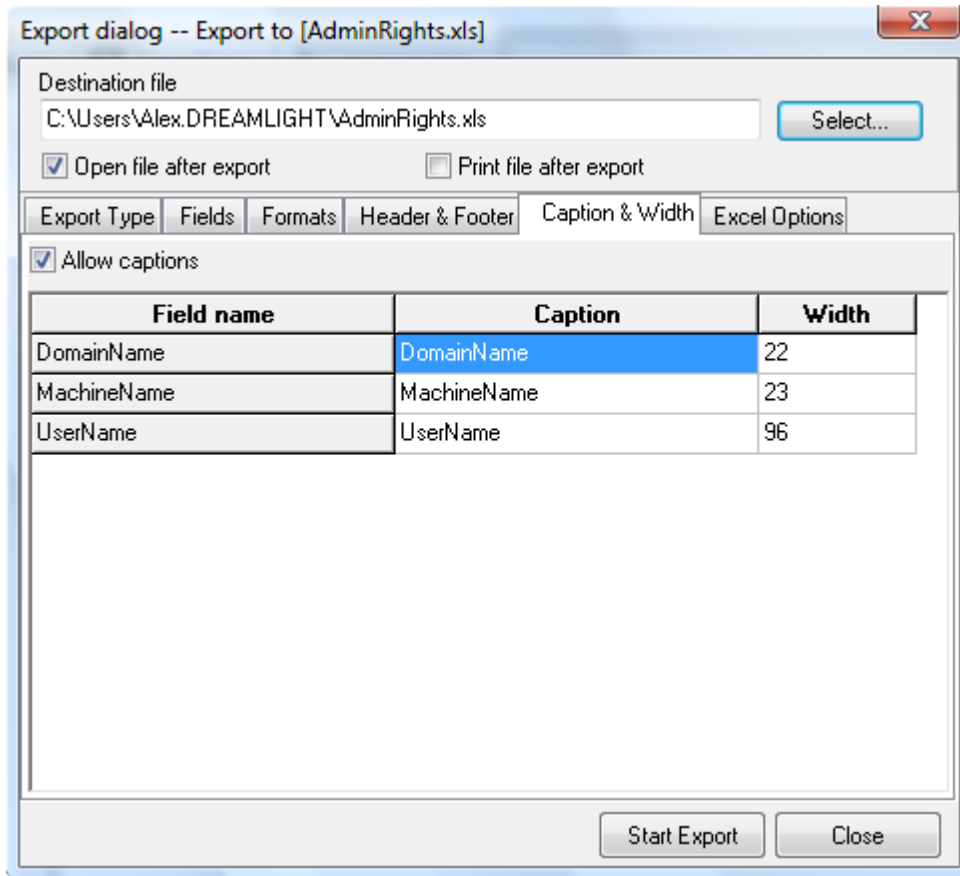
15. Switch to the Formats tab and select your required formats for the data you want to export.

16. Switch to Header and Footer tab.

17. Type in the text for the header and footer of your exported data in the corresponding fields.

18. Switch to the Caption & Width tab.

19. Update the Caption and its Width for the fields that you want to update.
20. Click Select button to specify where you want to export the scan results.



21. Save As dialog appears on the screen.
22. Select the location you want to save the file to and type the name of the file in the File Name field.
23. Click Save button.