

Adding Server in Permissions Audit

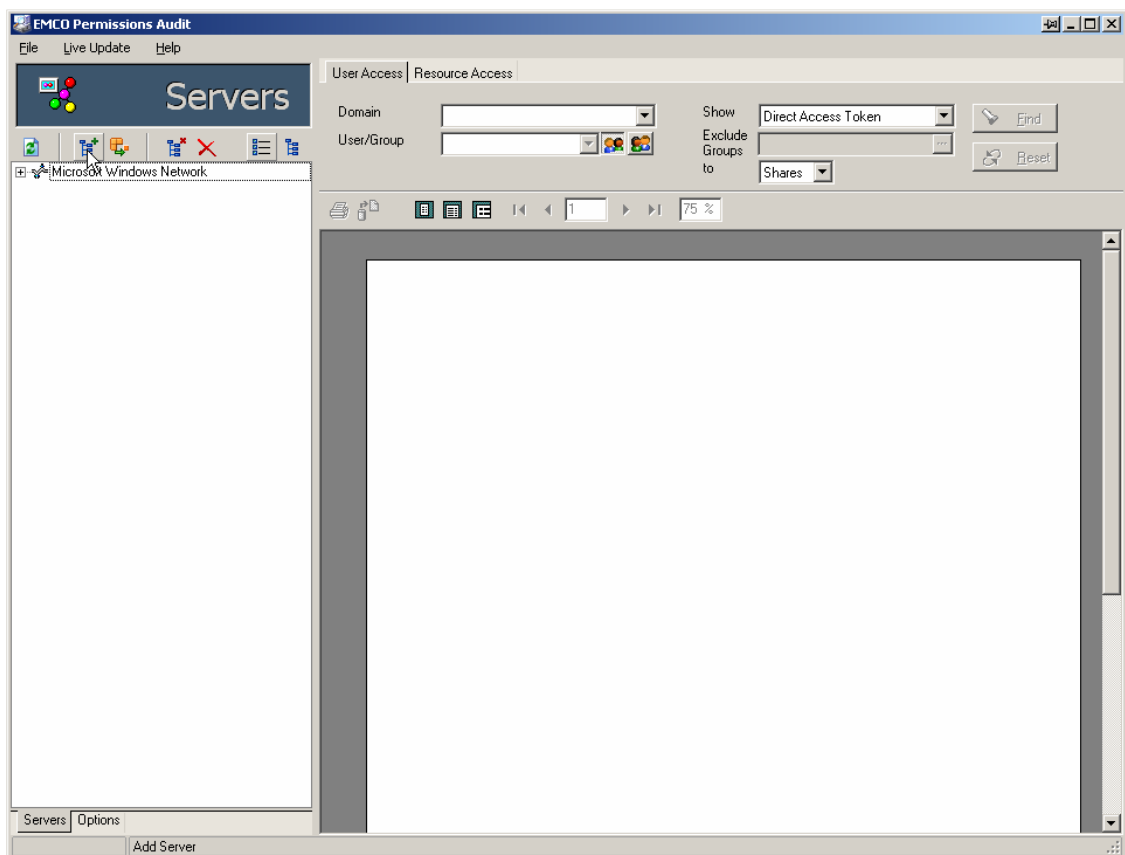
EMCO Permissions Audit provides two different ways to add servers in the machine tree

WAY –I

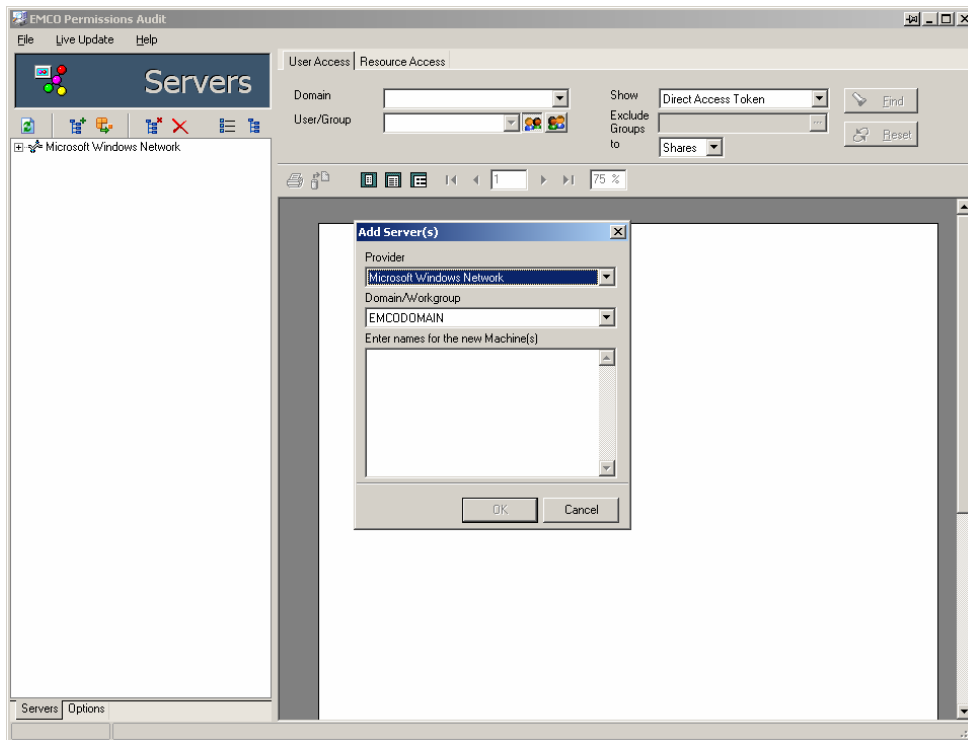
To add server in EMCO Permissions Audit:

To add server in EMCO Permissions Audit perform the following steps:

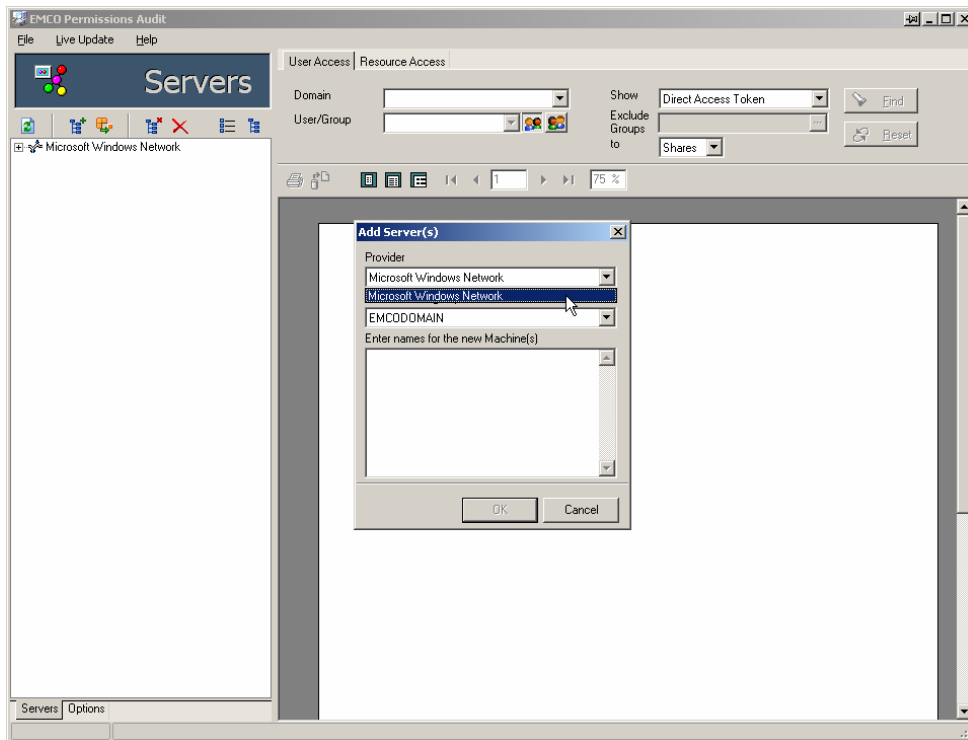
1. Click the **Add** icon on the toolbar in **Servers** Tab.



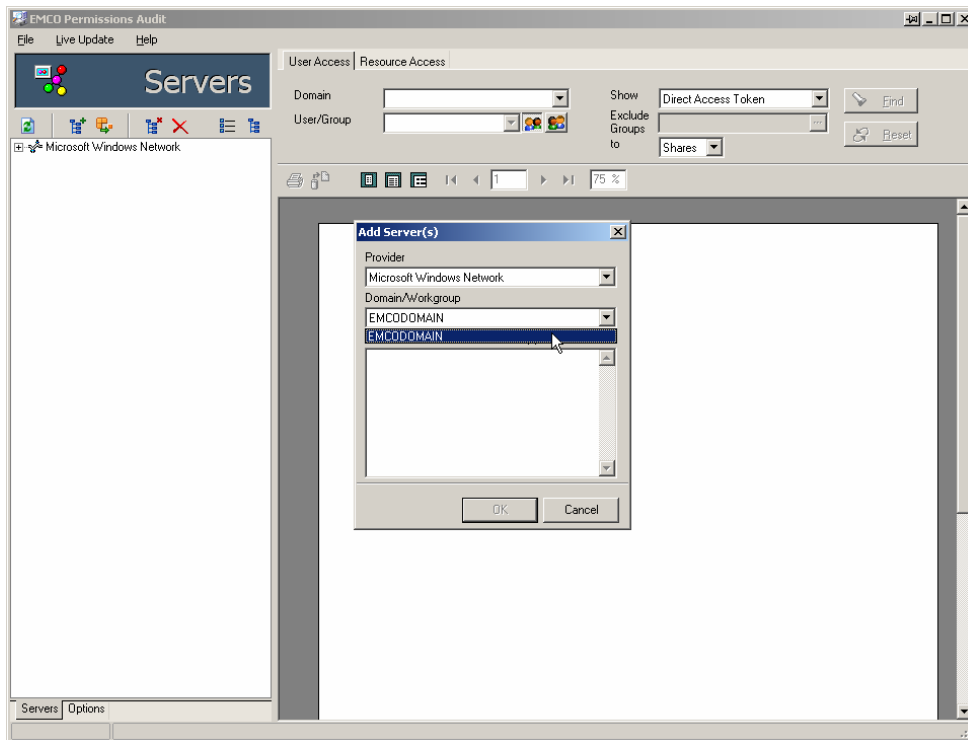
- An **Add Server** dialog box will appear on the screen.



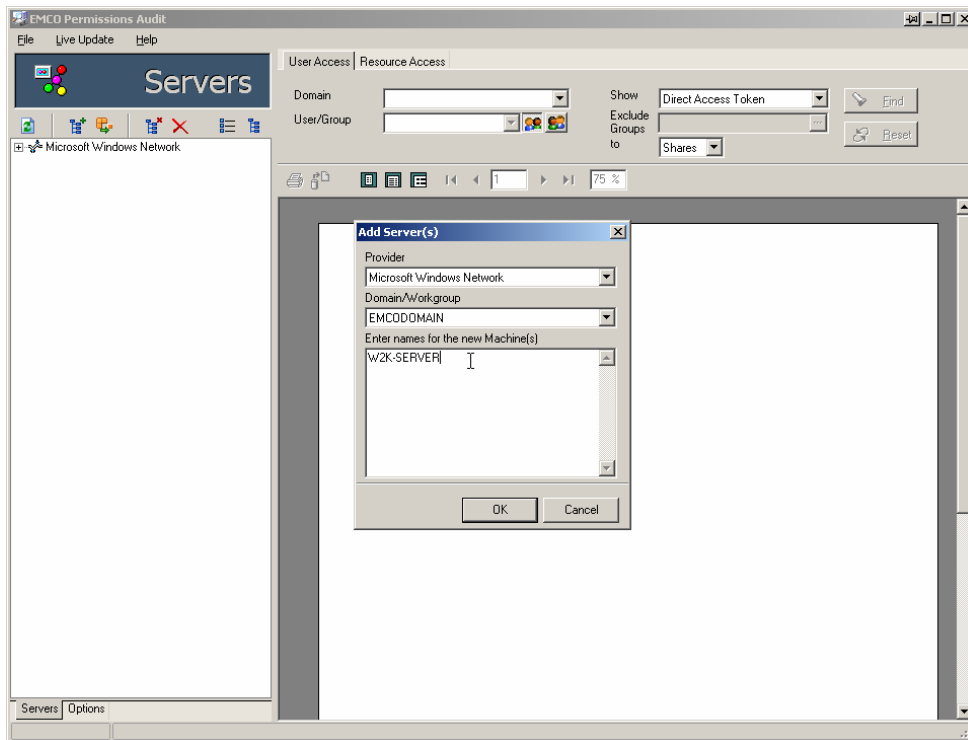
- Select the required type of the network for the **Provider** dropdown list.



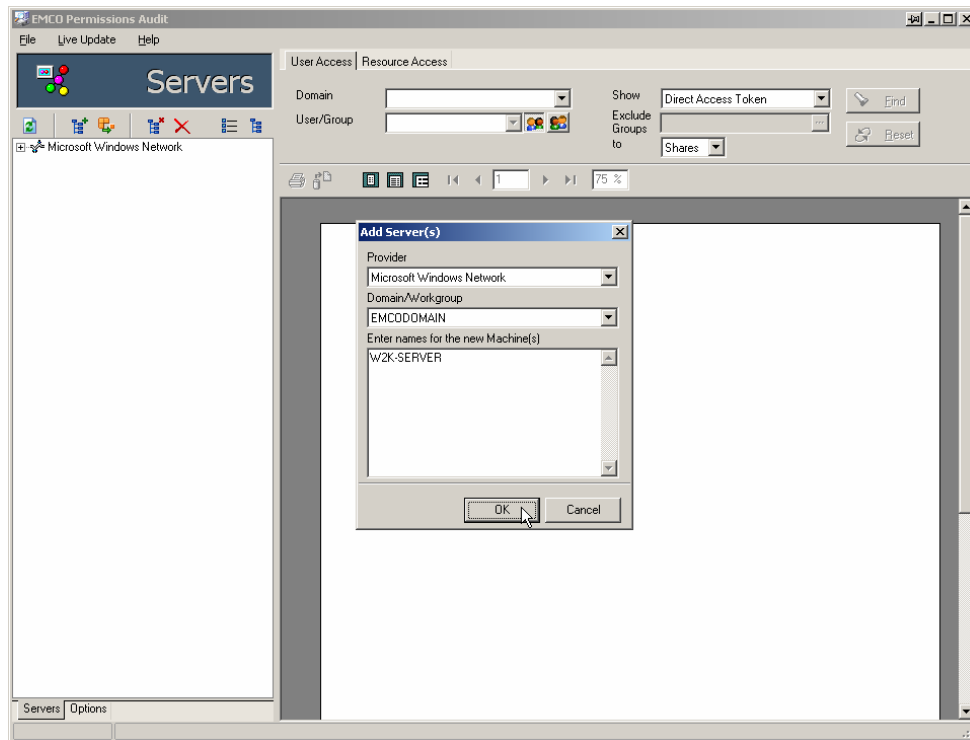
- Select the required domain name from the **Domain/Workgroup** dropdown list.



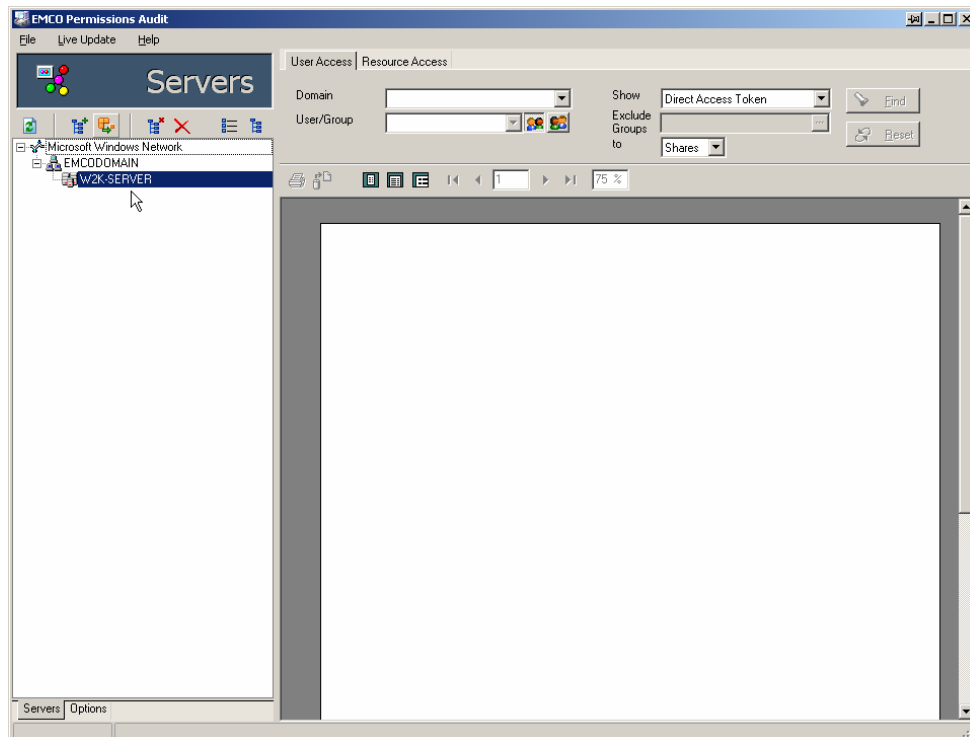
- Type in the name of the server you want to add in the **machines** textbox.



- Click **OK** button to add the server.



- The added server will appear in the **machines tree** in the **Servers** Tab.

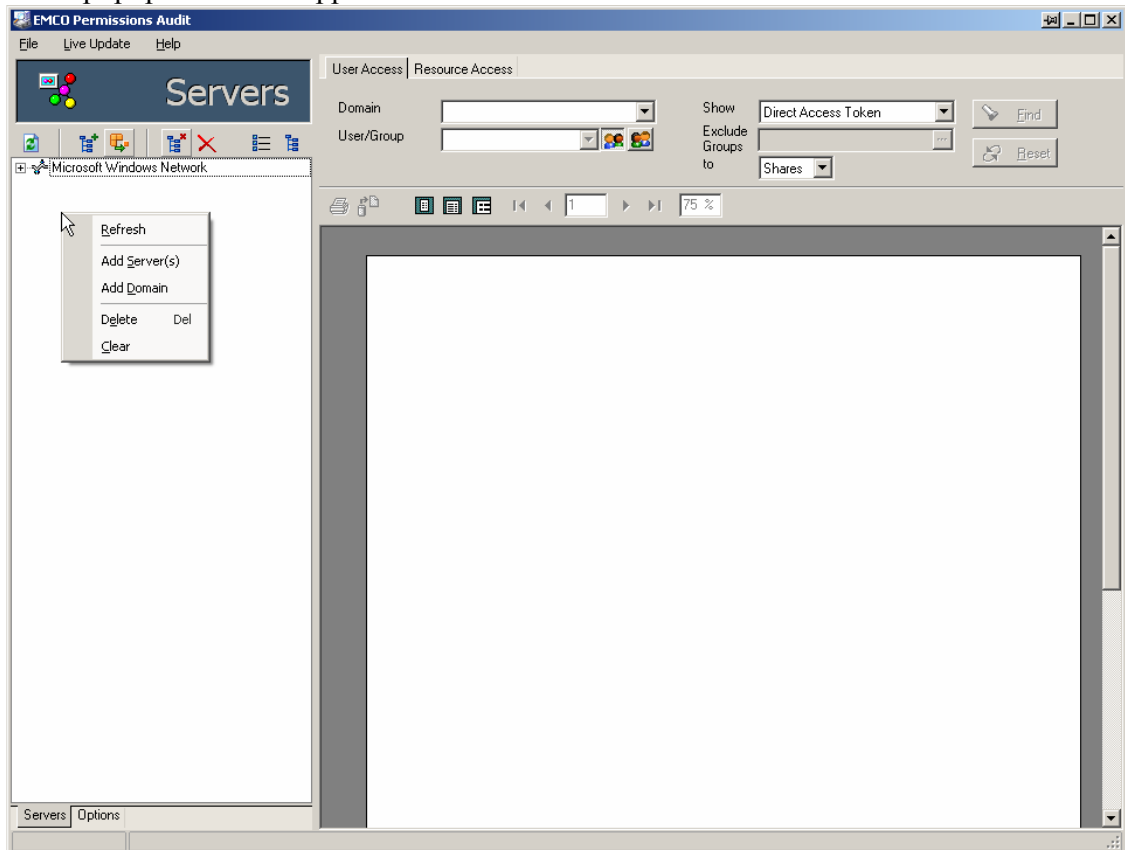


WAY -II

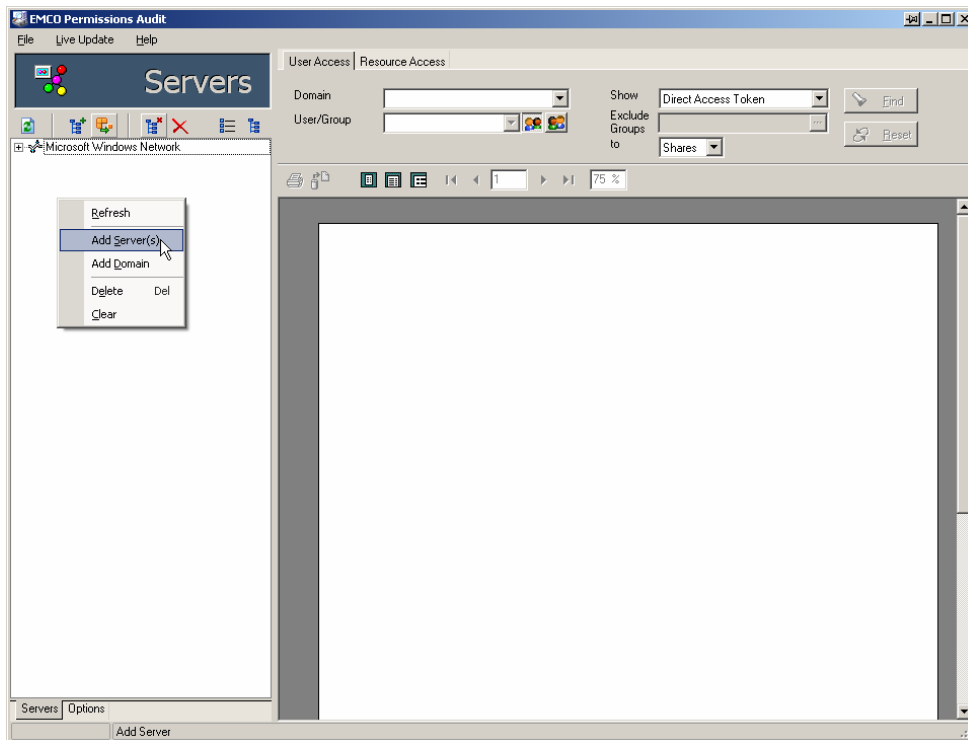
To add server in EMCO Permissions Audit:

To add server in EMCO Permissions Audit perform the following steps:

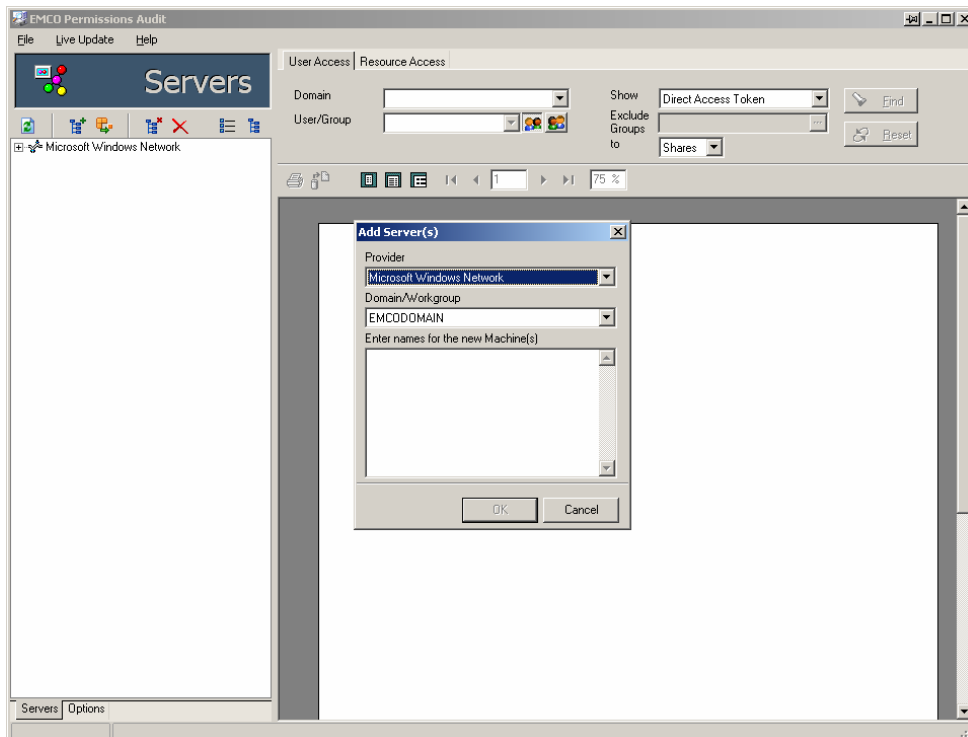
1. Right click on the Servers Tab.
2. A popup menu will appear.



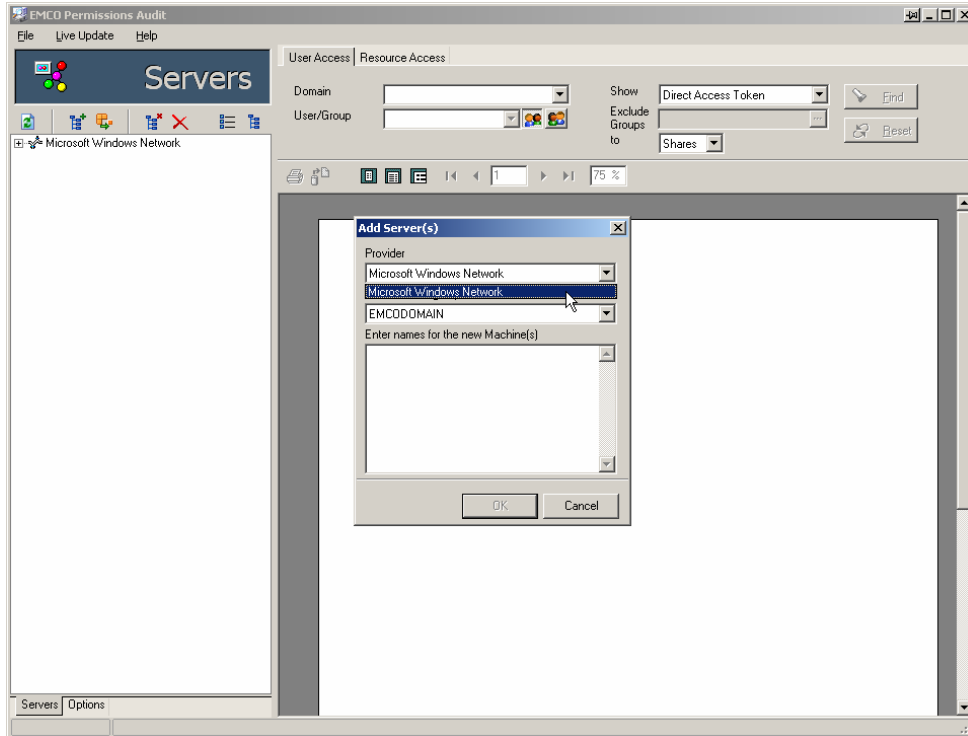
3. Click **Add Server(s)** from the popup menu.



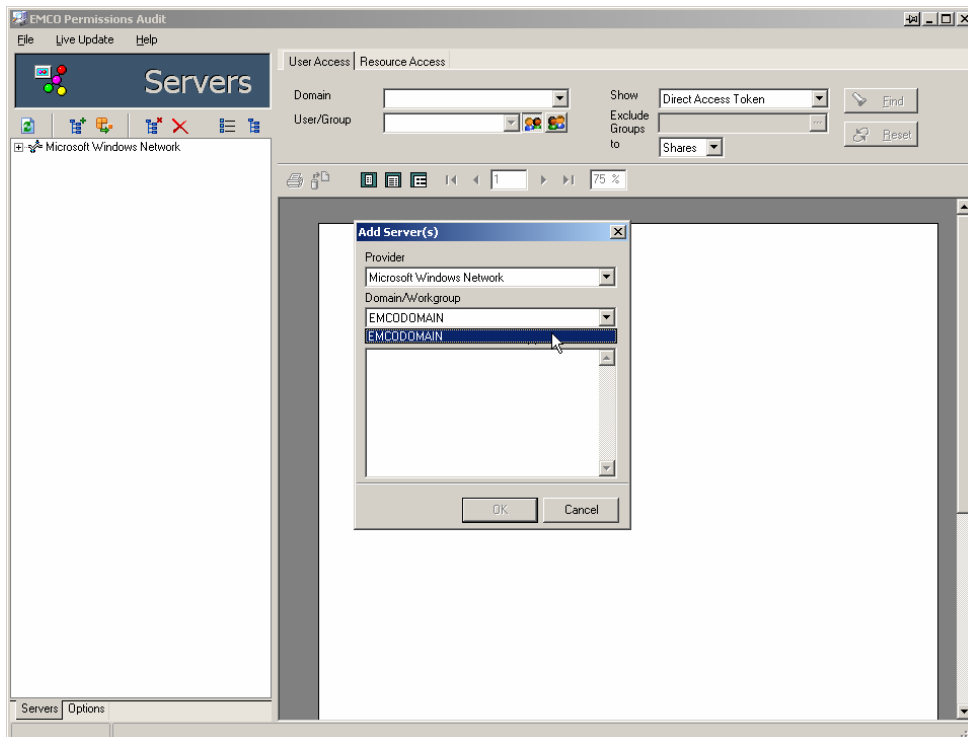
4. An **Add Server(s)** dialog box will appear on the screen.



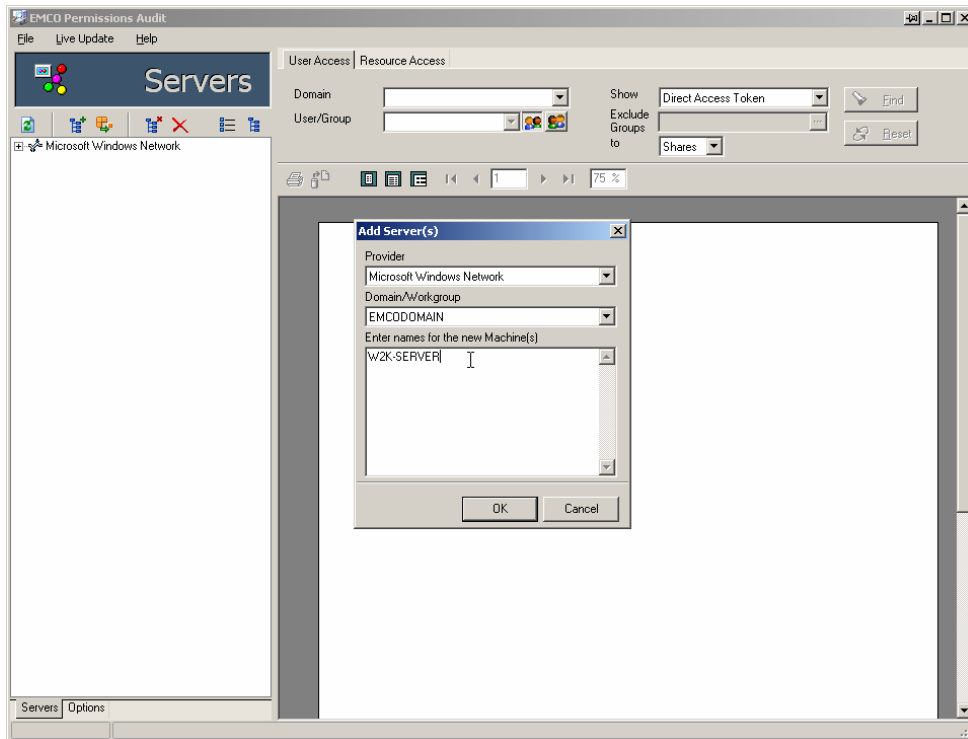
5. Select the required type of the network for the **Provider** dropdown list.



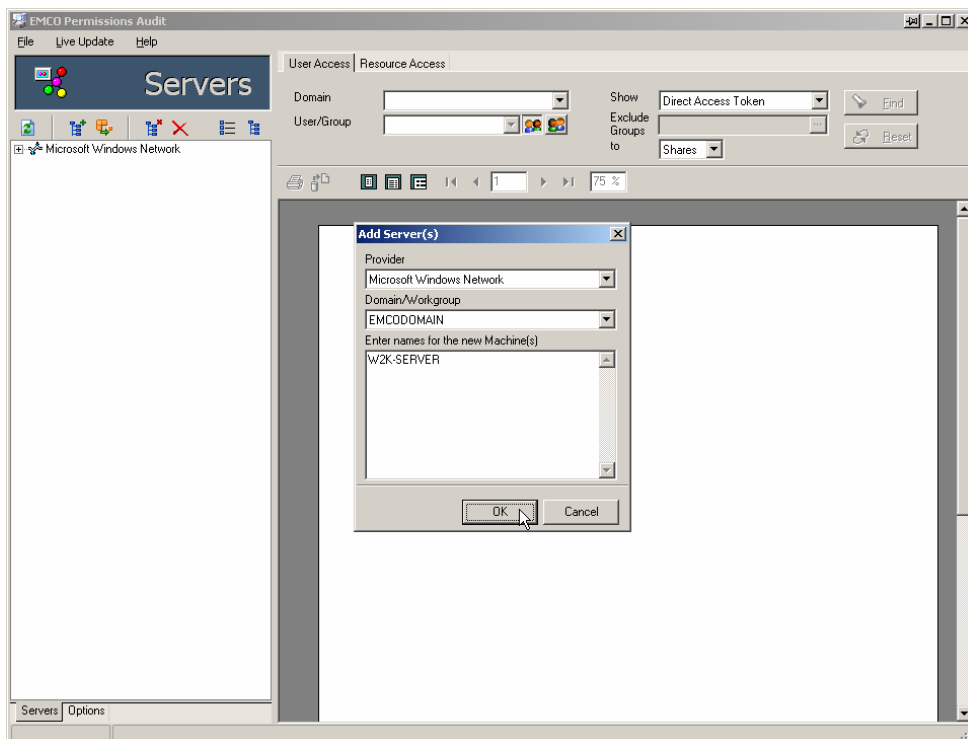
6. Select the required domain name from the **Domain/Workgroup** dropdown list.



7. Type in the name of the server you want to add in the **machines** textbox.



8. Click **OK** button to add the server.



9. The added server will appear in the **machines** tree in the **Servers** Tab.

