

Configuring SQL for Permission Audit

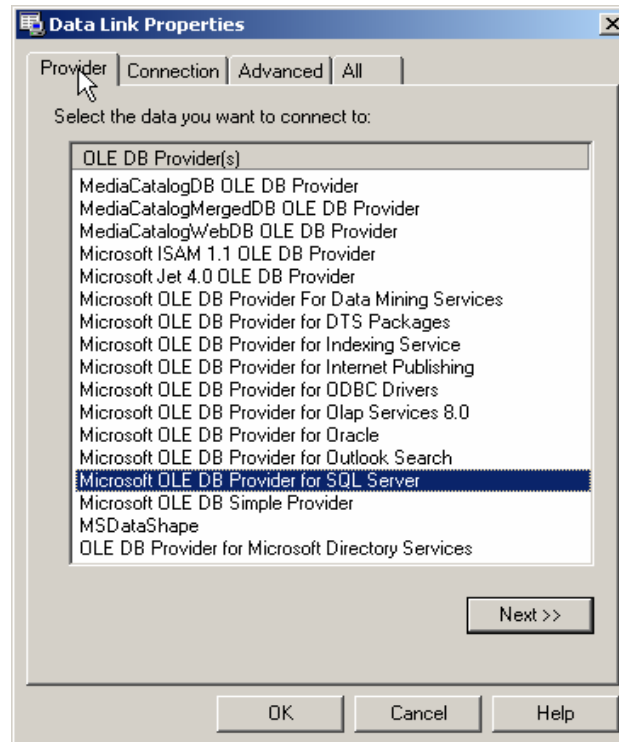
Microsoft SQL Server 2000 Desktop Engine (MSDE 2000) is a data engine built on core SQL Server technology, is a reliable storage engine and query processor for desktop extensions of enterprise applications. MSDE is designed to run in the background, supporting transactional desktop applications, MSDE 2000 does not have its own user interface (UI) or tools. Users interact with MSDE 2000 through the application in which it is embedded. It is an attractive alternative to using the Microsoft Jet database, MSDE 2000 is designed primarily to provide a low-cost option for developers who need a database server that can be easily distributed and installed with a value-added business solution.

To Configure MSDE Desktop Engine

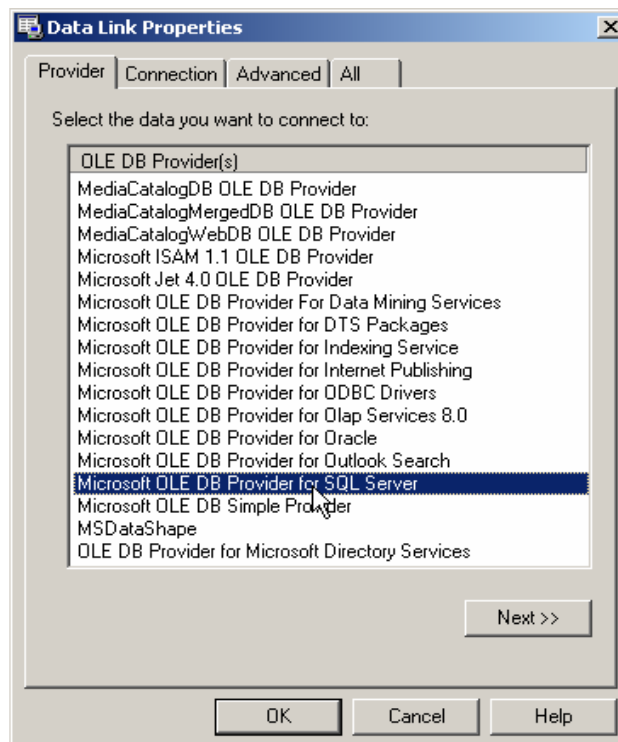
To configure MSDE Desktop Engine perform the following steps:

1. Download MSDE Installation file from Microsoft MSDE download website (<http://www.microsoft.com/sql/msde/downloads/default.asp>)
2. Run command prompt, move to the folder containing installation files of MSDE and type “setup sapwd='your password' other parameters*” (Read MSDE Read me file for more information about setup parameters).
3. Copy all files from **%EMCO Permission Audit % Data File** to **%Microsoft SQL Server % MSSQL % Data**.
4. Open Permissions Audit.udl from **%EMCO Permission Audit%Data** directory.

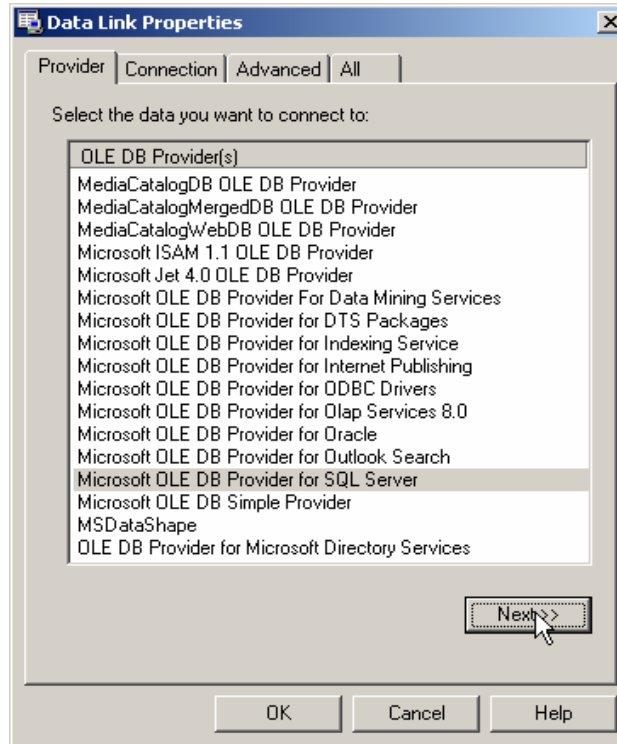
5. Click on the **Provider** Tab.



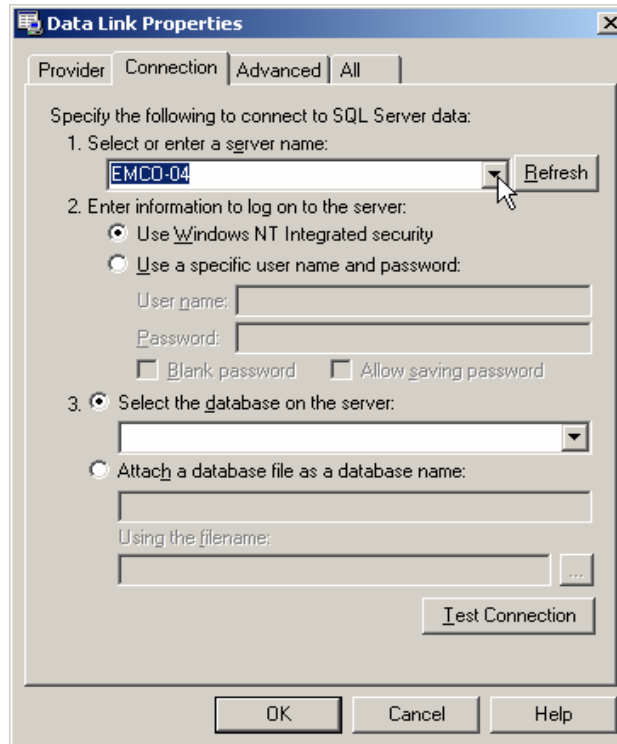
6. Select **Microsoft OLE DB Provider for SQL Server** from the providers list.



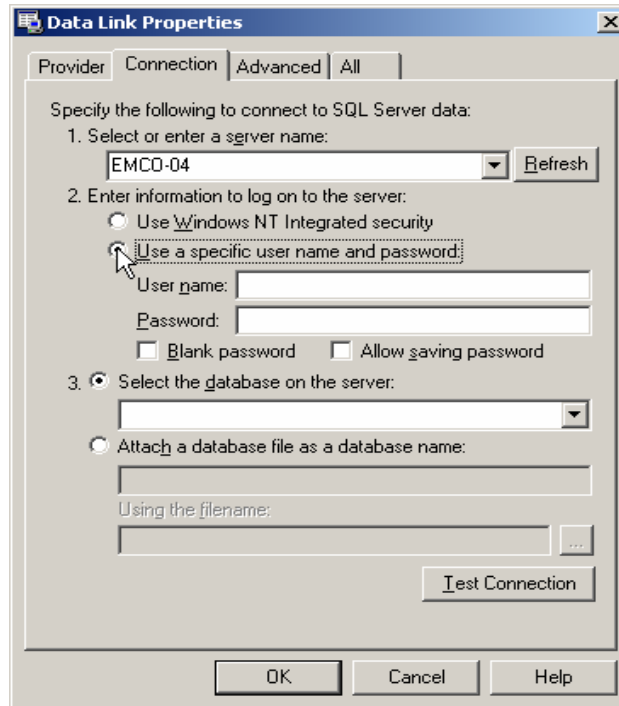
7. Click **Next** or **Connection** Tab.



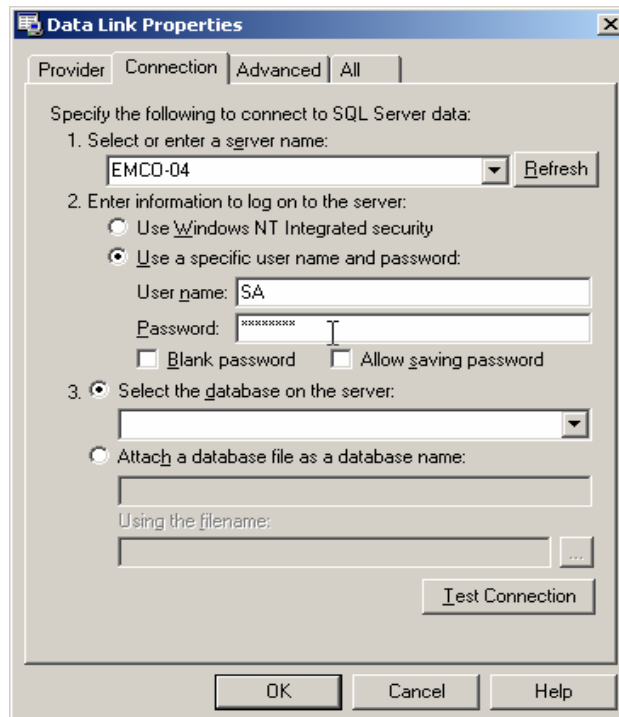
8. Type the server **Name** or select from the Drop Down list.



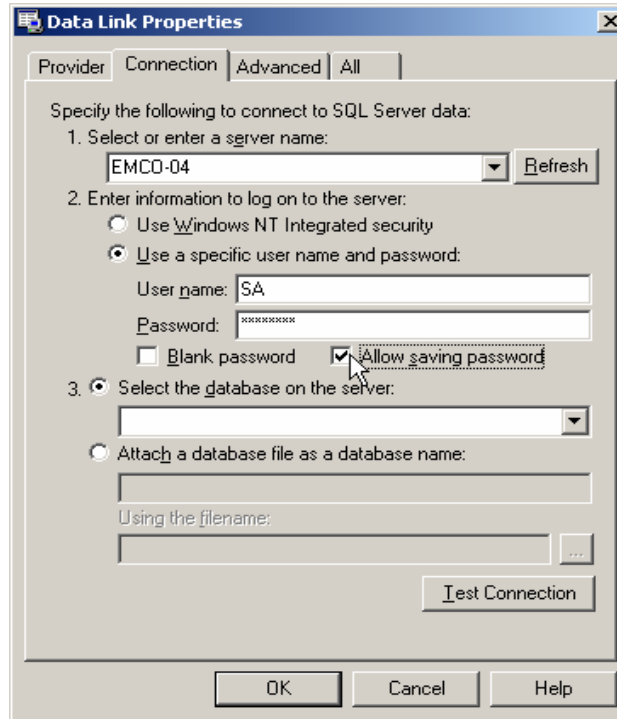
9. Select whether you want to use Windows NT Integrated security or use a specific username and password.



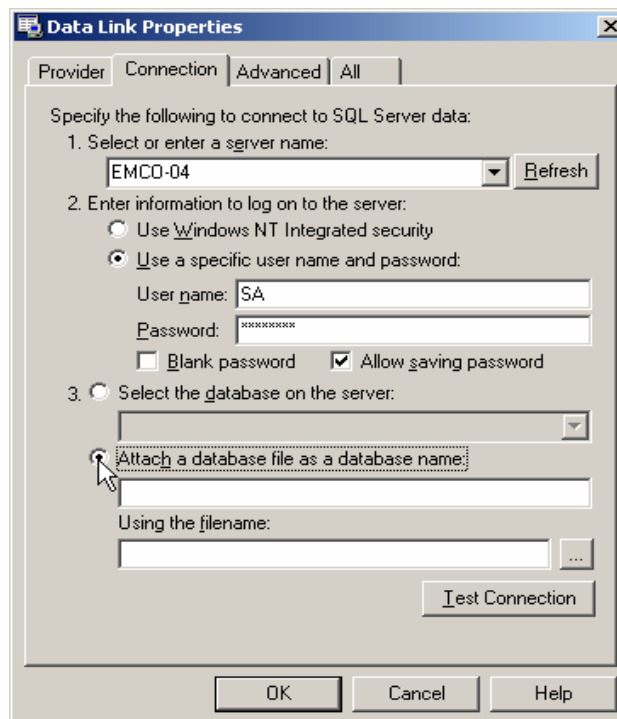
10. If you want to use a specific username and password then type the supplied user name and password to authenticate your logon information to the data source.



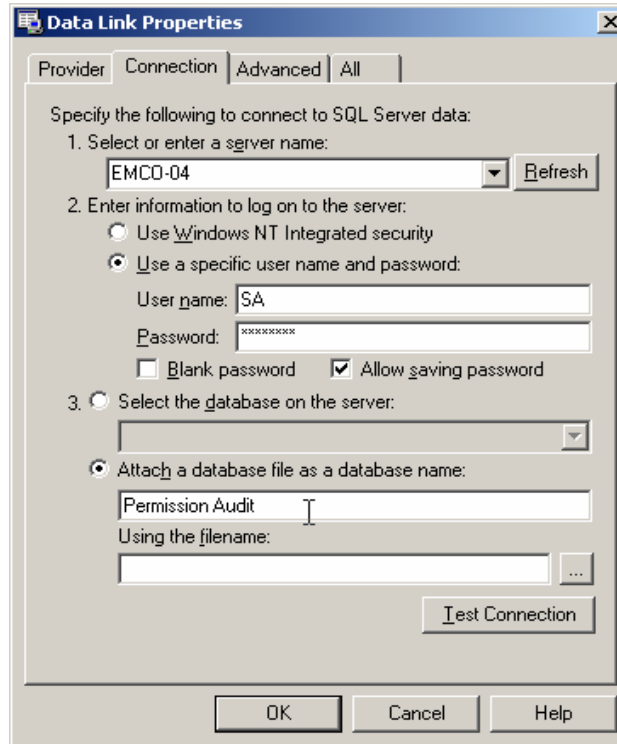
11. To save you password click **Allow saving password** checkbox.



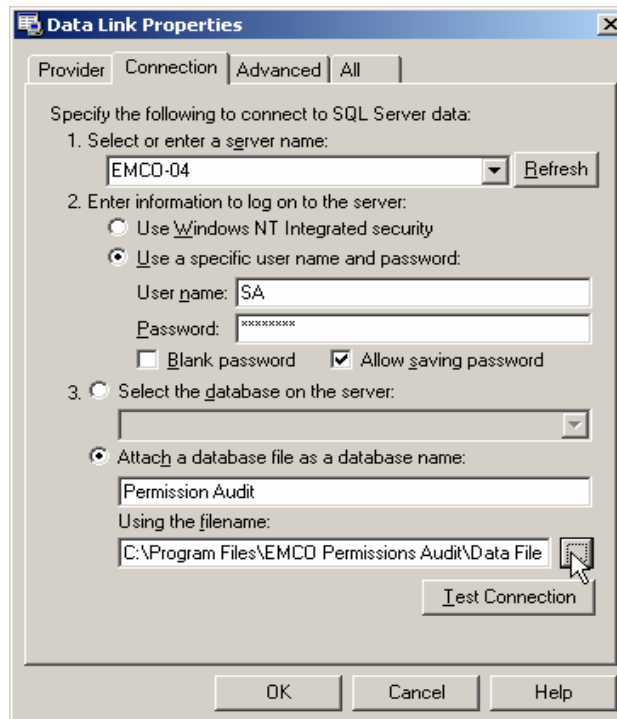
12. To select from the already available database on the server click the **Select Database on he server** and select **Permission Audit Data** from the Database List. To attach a database file click **Attach a Database file as a database name.**



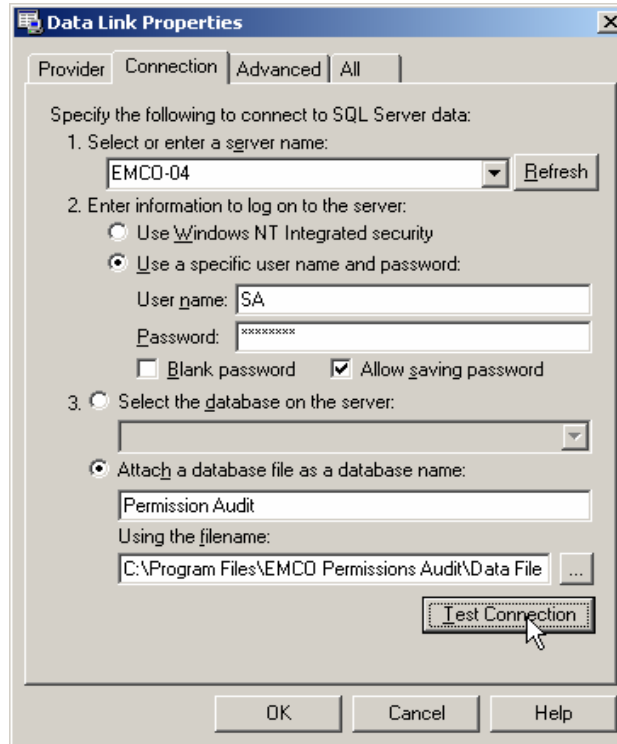
13. Now type the name for the database.



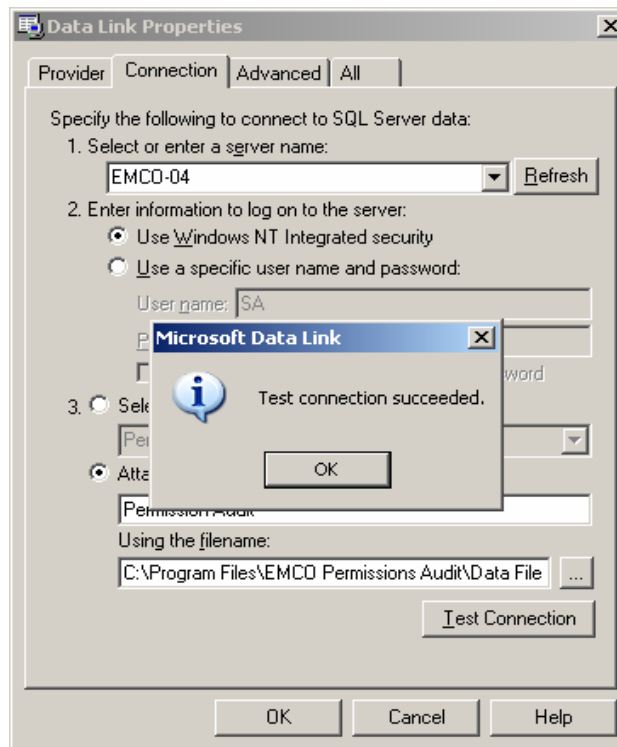
14. Click the browse button and select data file located under **%EMCO Permission Audit%Data File** directory.



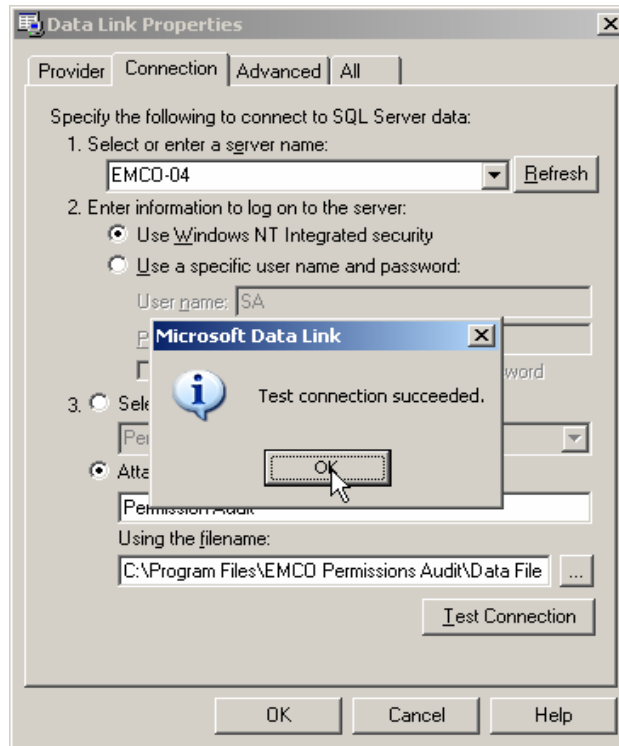
15. Click **Test Connection** button to attempt a connection to the specified data source.



16. On successful connection you will see an information dialog box.



17. Click **OK** button.

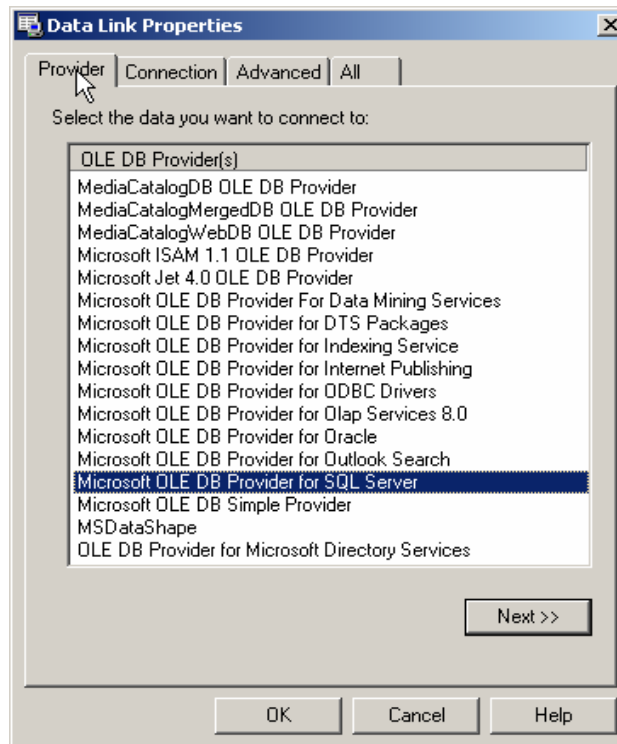


18. If the connection fails, ensure that the settings are correct. For example, spelling errors and case sensitivity can cause failed connections.

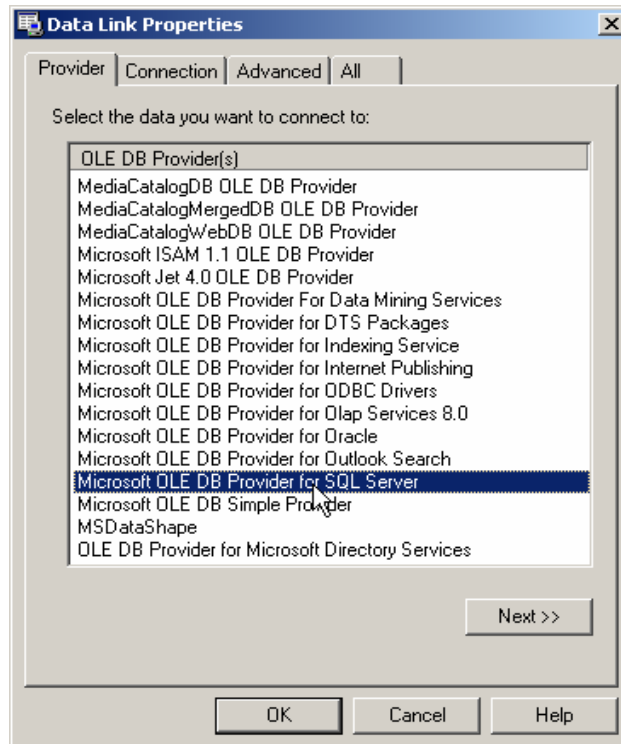
To Configure SQL Server

To configure SQL Server, perform the following steps:

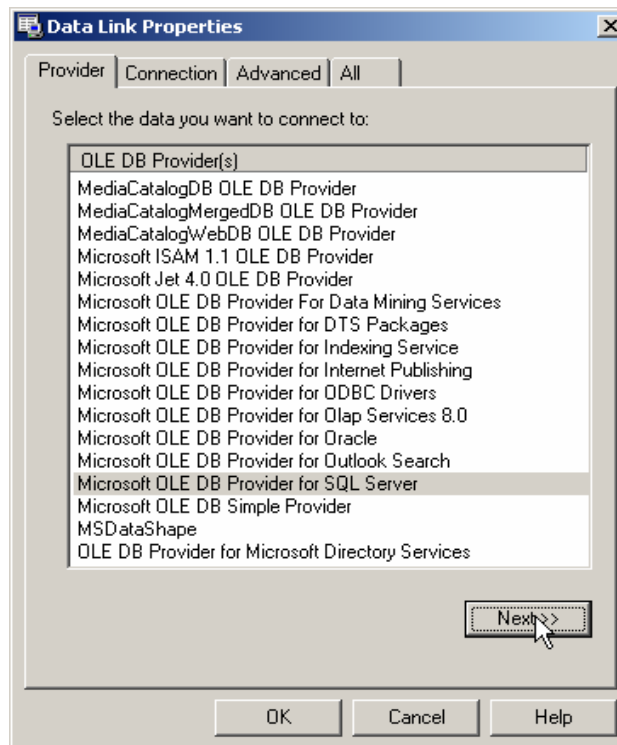
1. Install Microsoft SQL server from the installation CD for the MS SQL server.
2. Copy all files from **%EMCO Permission Audit % Data File** to **%Microsoft SQL Server % MSSQL % Data**
3. Open Permissions Audit.udl from **%EMCO Permission Audit%Data** directory.
4. Click on the Provider Tab.



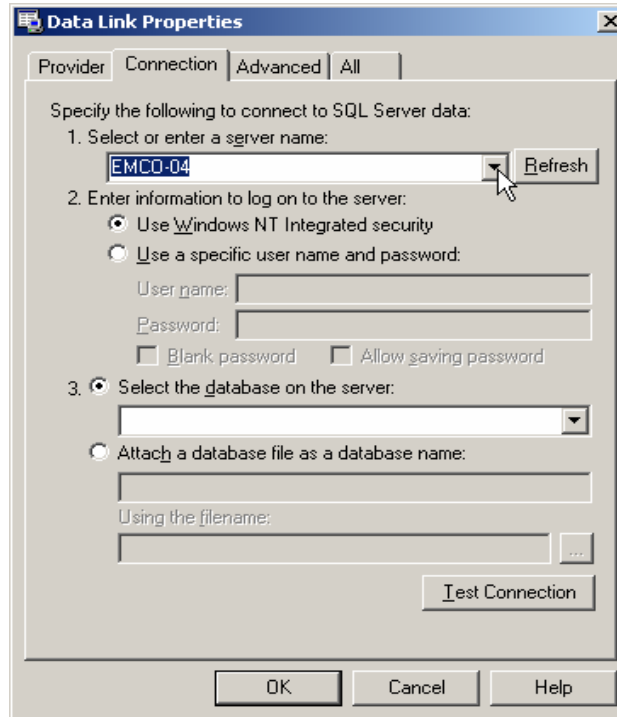
5. Select Microsoft OLE DB Provider for SQL Server.



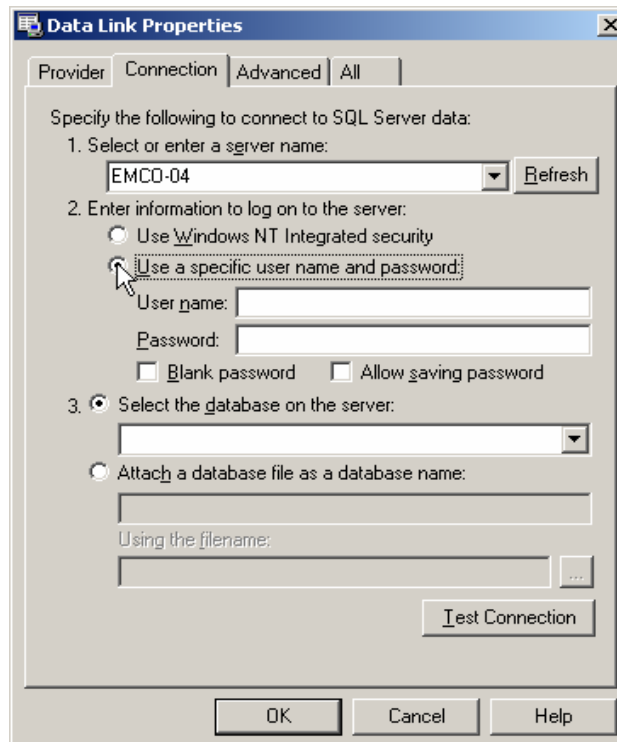
6. Click Next or Connection Tab.



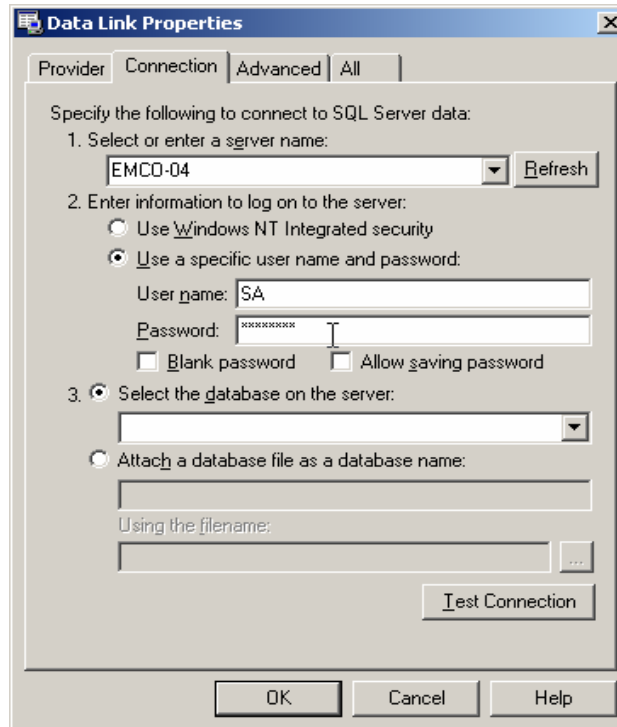
7. Type the server **Name** or select from the Drop Down list.



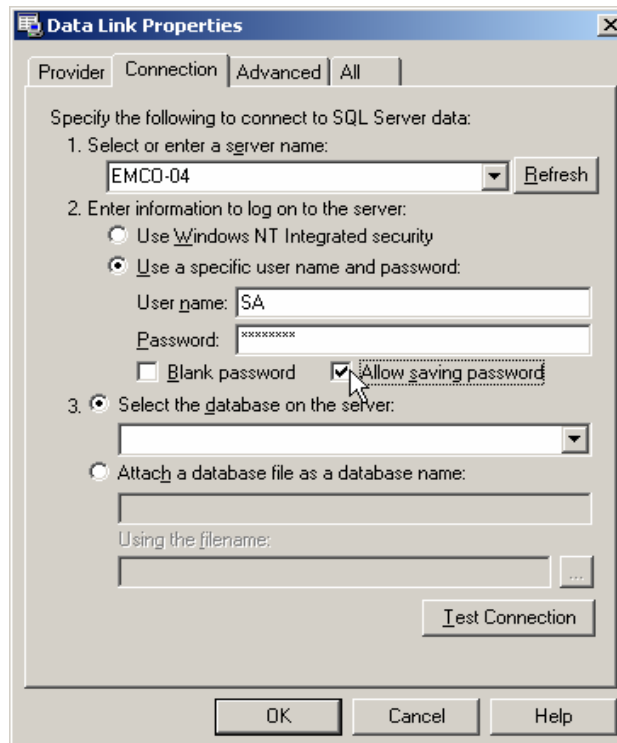
8. Select whether you want to use Windows NT Integrated security or use a specific username and password.



- If you want to use a specific username and password then type the supplied user name and password to authenticate your logon information to the data source.

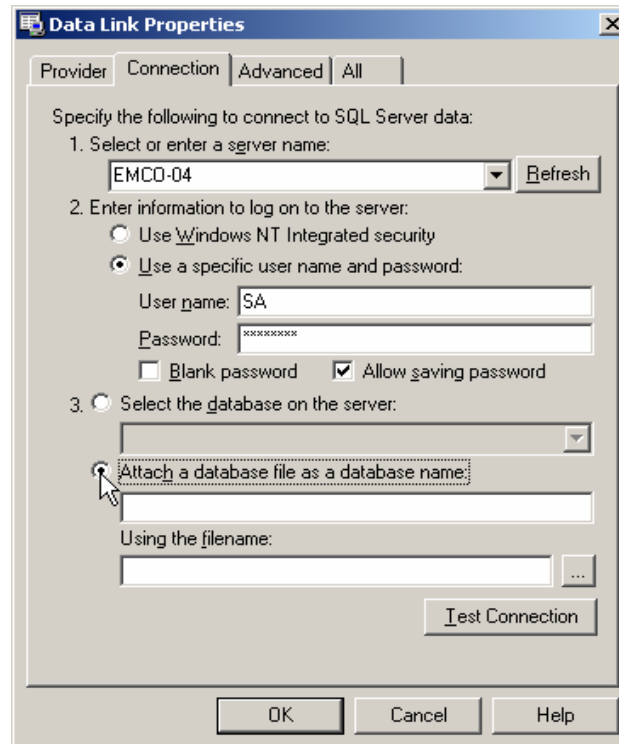


- To save you password click **Allow saving password** checkbox.

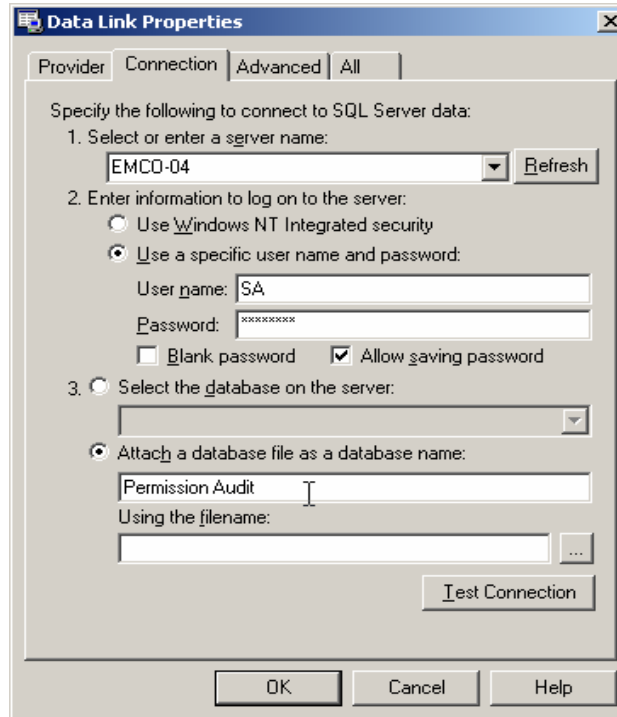


11. To select a database use one of these methods:

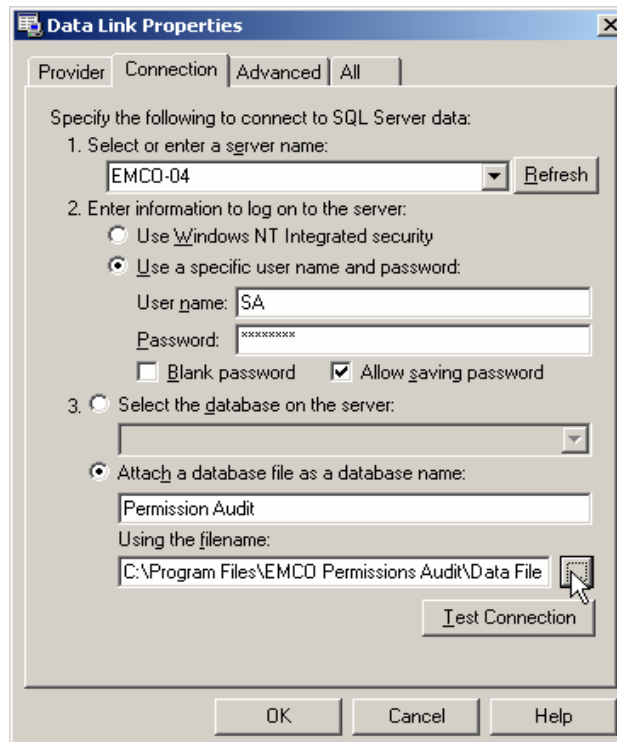
- ✧ For SQL Server 7.0, attach an SQL database file as a database name. Type the database name to use for the attached SQL database file.
- ✧ For SQL Server versions 6.5 and earlier, type the database file name to attach. Then type the name of the single-file database file. To browse for the file, click the button.



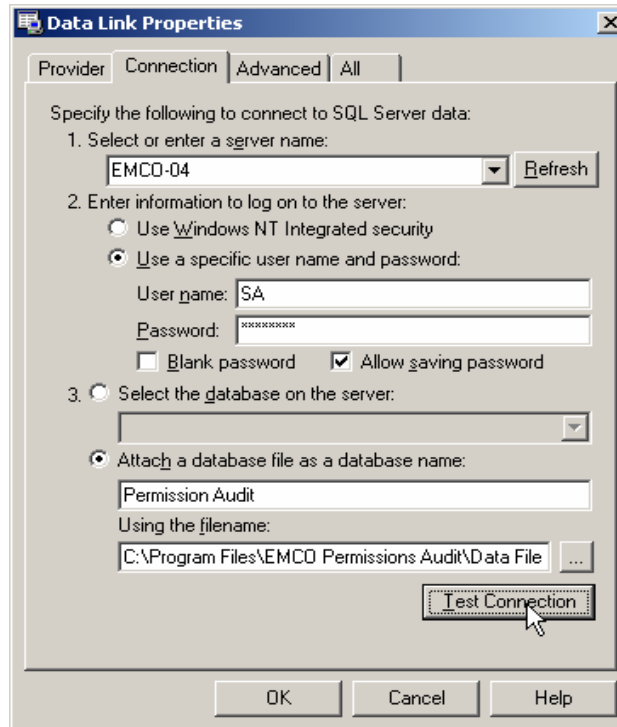
12. Now type the name for the database.



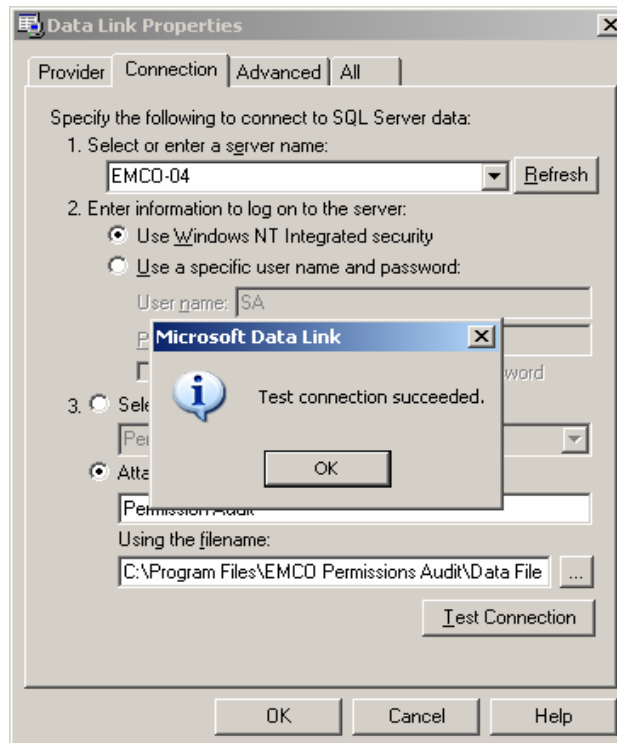
13. Click the browse button and select data file located under **%EMCO Permission Audit%Data File** directory.



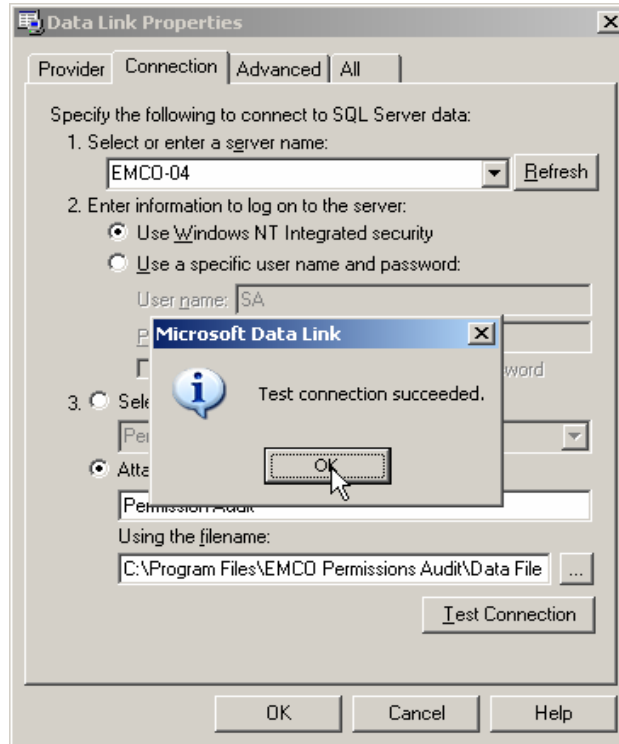
- Click **Test Connection** button to attempt a connection to the specified data source.



- On successful connection you will see an information dialog box.



16. Click **OK** button.



17. If the connection fails, ensure that the settings are correct. For example, spelling errors and case sensitivity can cause failed connections.