

Show which resources can be accessed by which users

EMCO Permissions Audit allows you to see which resources can be access by which users on a domain and what type of access a certain user have on different resources.

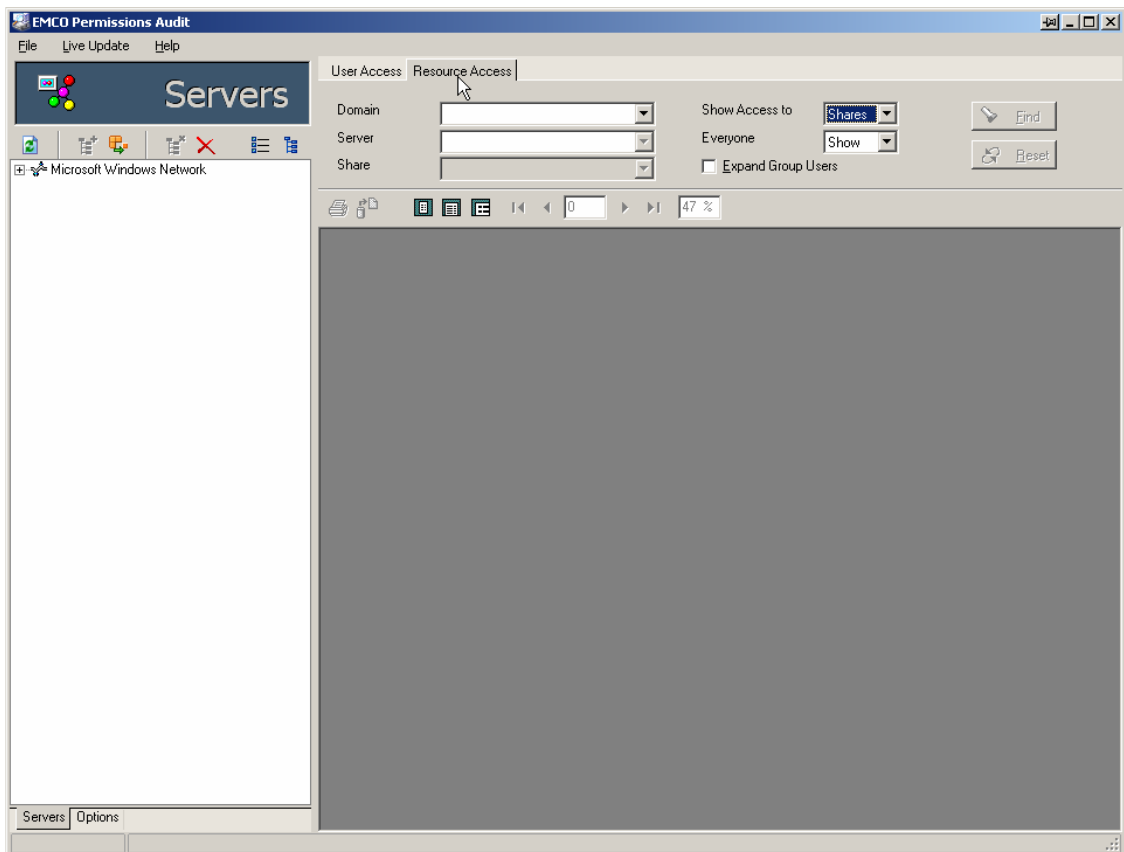
EMCO Permissions Audit provides details about two types of resources:

- ✦ Folders
- ✦ Shares

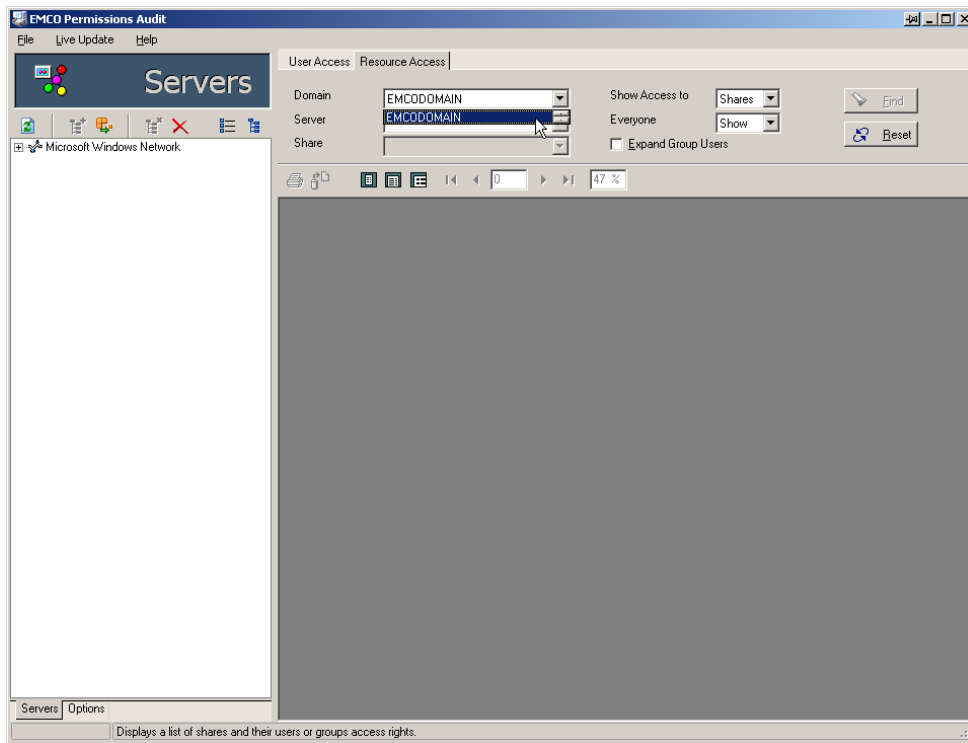
To see which resources can be access by which users:

To see which resources can be access by which users in EMCO Permissions Audit, perform the following steps:

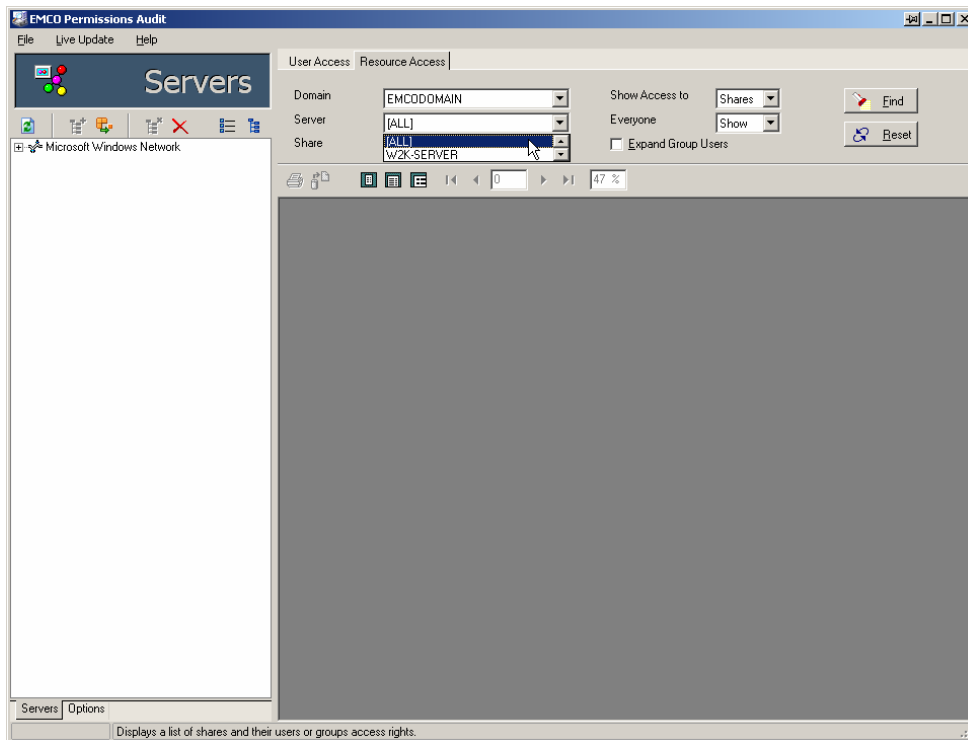
1. Switch to **Resources Access** Tab.



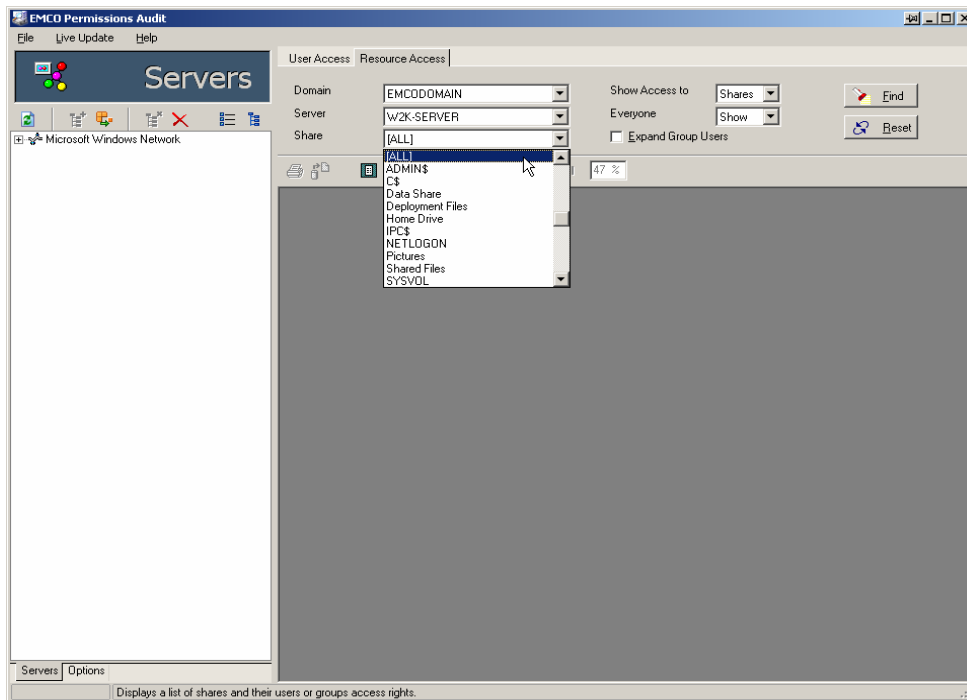
2. Select the required domain name from the **Domain** dropdown list.



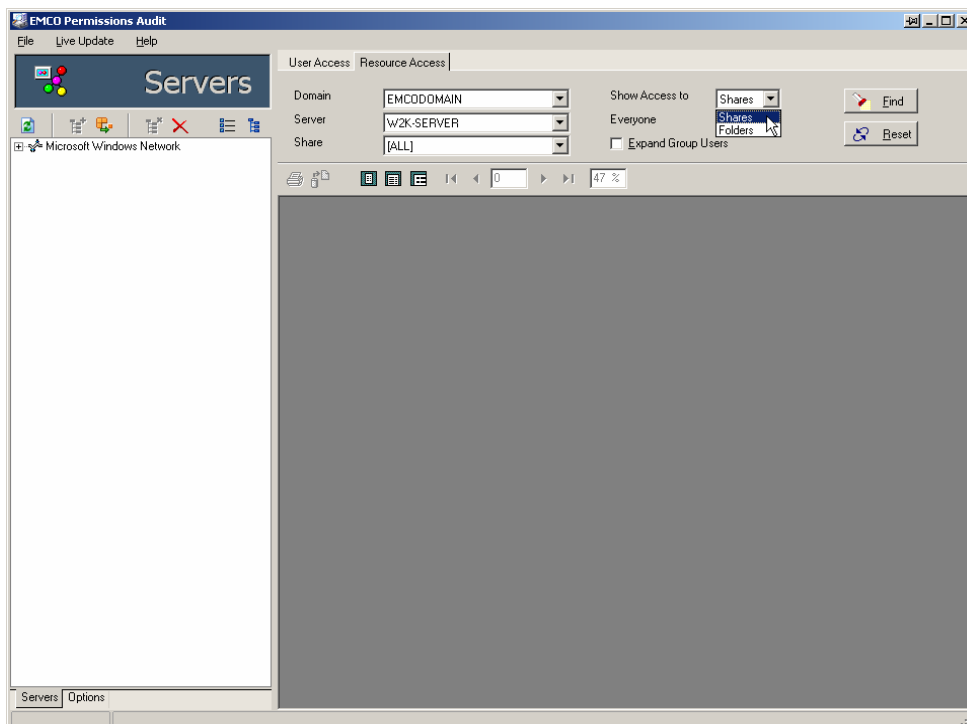
3. Select the required servers from the **Servers** dropdown list.



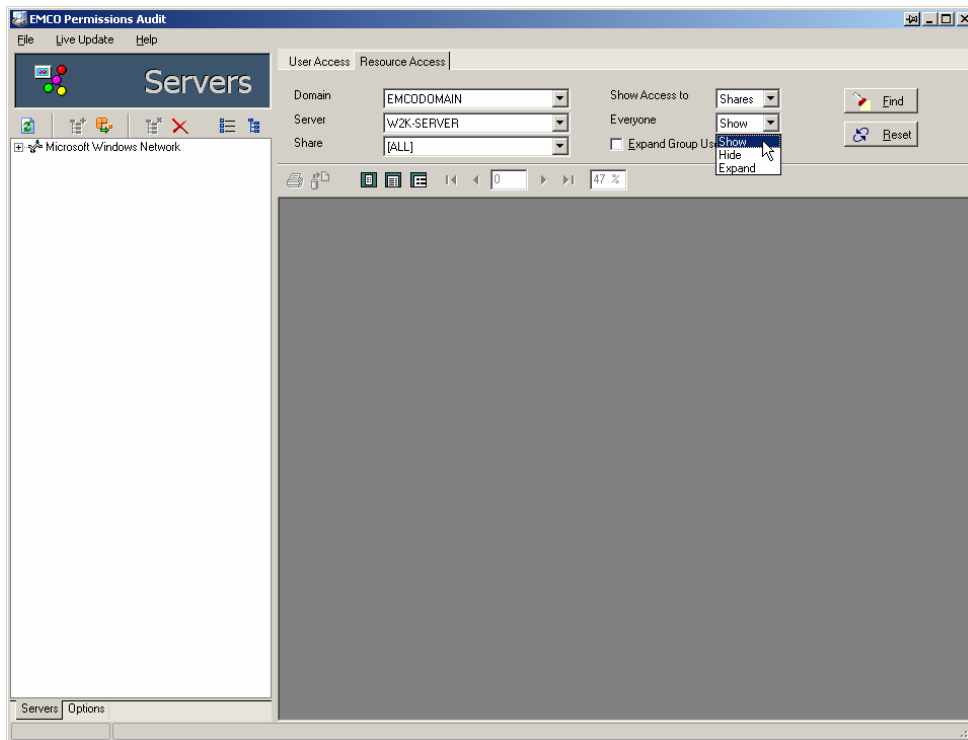
- Select the required shares from the **Shares** dropdown list.



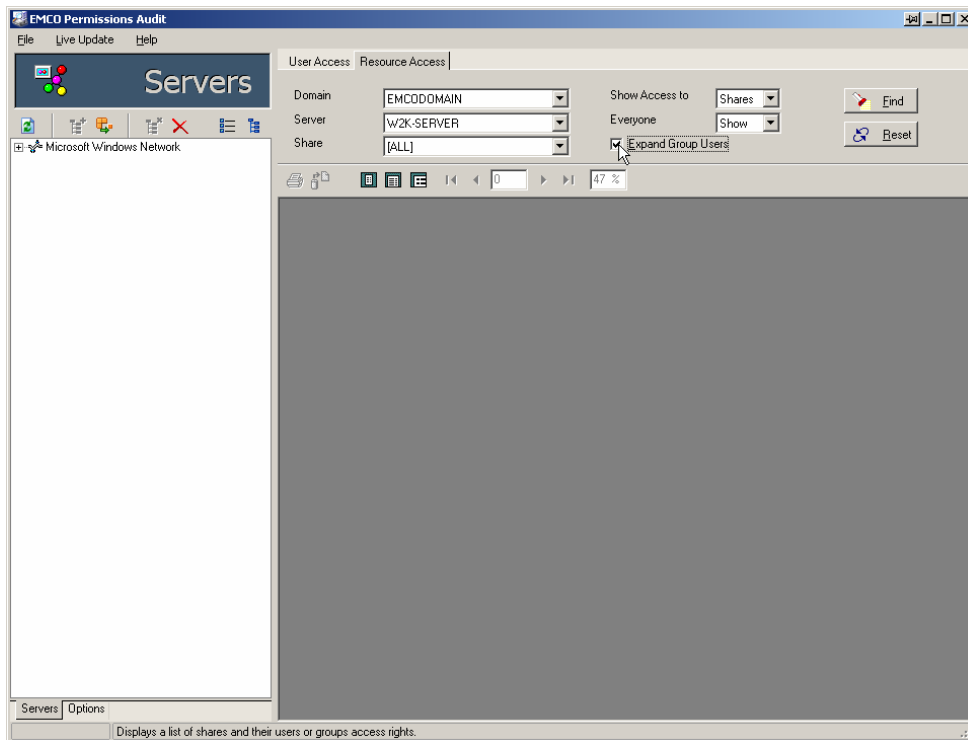
- Select whether you want to scan shares or folders from the **Show Access To** dropdown list.



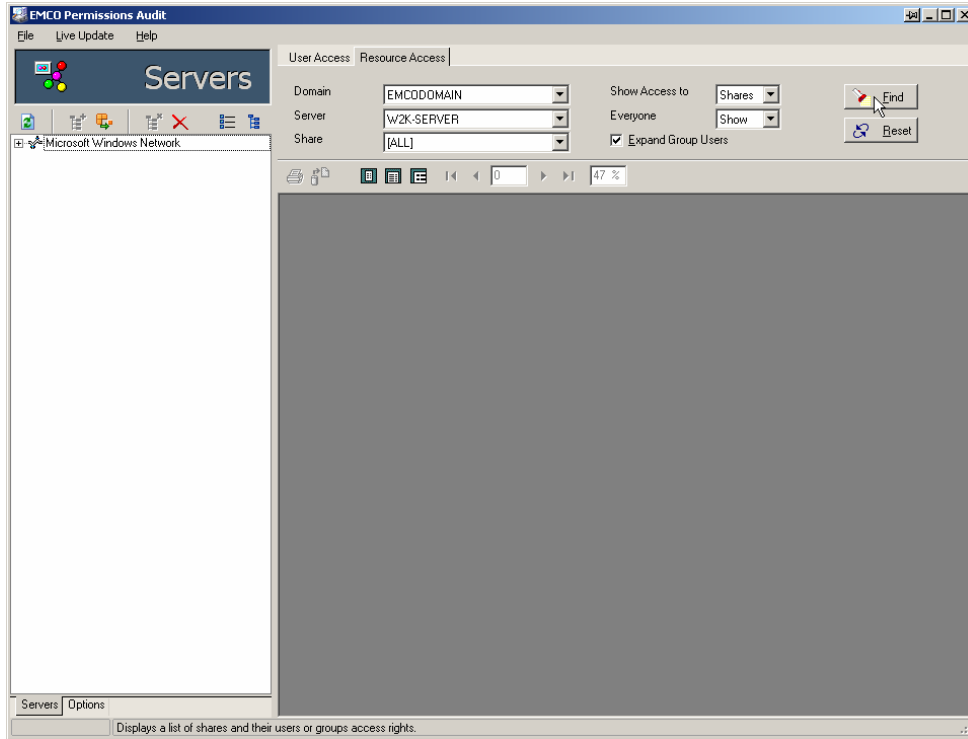
- Select the required option for the **Everyone** dropdown list.



- If you want to expand group users check the **Expand Group Users** checkbox.



8. Click **Find** button.



9. The scanned information will be displayed below.

