

How to audit folder permissions in the EMCO Permissions Audit XML

EMCO Permissions Audit XML allows you to check and manage permissions for shares and folders. You can manage both shares and folders permissions for shared folders in the network. For the rest of folders in the network computers you are able manage folders permissions. This article shows you approach for checking of folders permissions.

Auditing folder permissions for shares

If folder is shared, it's very simple to get its permissions. All what you need to do is just to perform *Manage > Scan Data > Shares and Folders*. After a scan you can see a list of shares and their permissions in the *Shares* tab. Folders, which correspond to shares, and their permissions are displayed in *Folders* tab.

The screenshot shows the 'EMCO Permissions Audit - XML Edition' application window. The 'Shares and Folders Data' window is open, showing a tree view of folders and a table of permissions. The 'Folders' tab is selected, displaying a table with the following data:

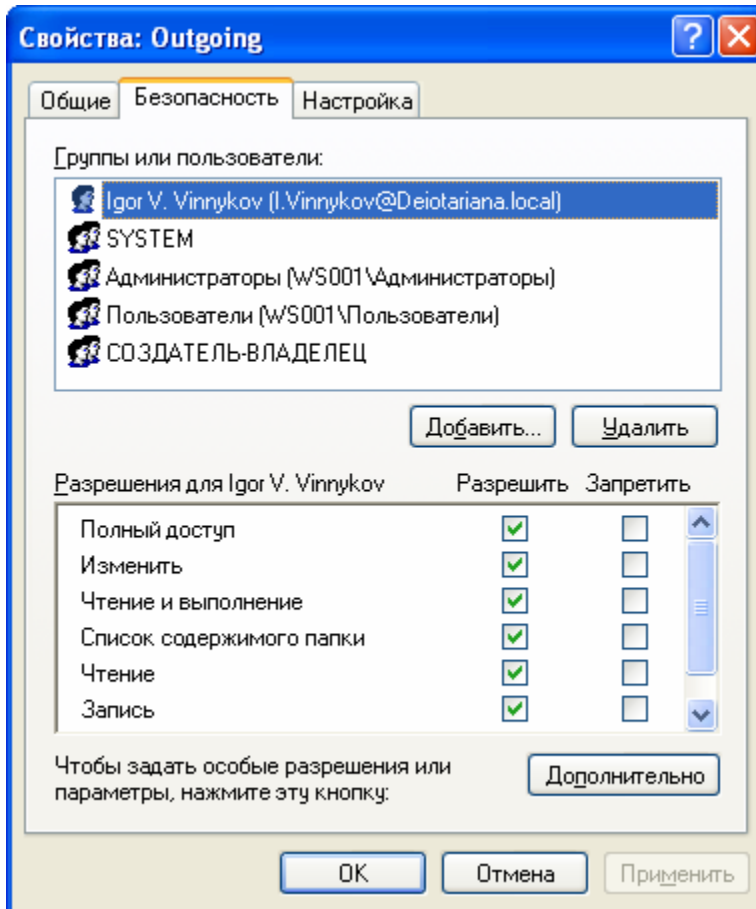
Machine Name	Path To Folder	Allow Full Control	Allow Change	Allow Read
WS001	D:\Outgoing	DEIOTARIANAV.Vinnykov, ...	DEIOTARIANAV.Vinnyko...	DEIOTARIANAV.Vinnyko...
WS001	D:\Incoming	BUILTIN\Администраторы...	BUILTIN\Администратор...	BUILTIN\Администрато...

Below the table, there is a section for 'Users and Groups' with the following permissions:

Users and Groups	Access Permissions
DEIOTARIANAV.Vinnykov	Allow Full Control
NT AUTHORITY\SYSTEM	Allow Full Control
BUILTIN\Администраторы	Allow Full Control
СОЗДАТЕЛЬ-ВЛАДЕЛЕЦ	Allow Full Control
BUILTIN\Пользователи	Allow Change, Allow Read

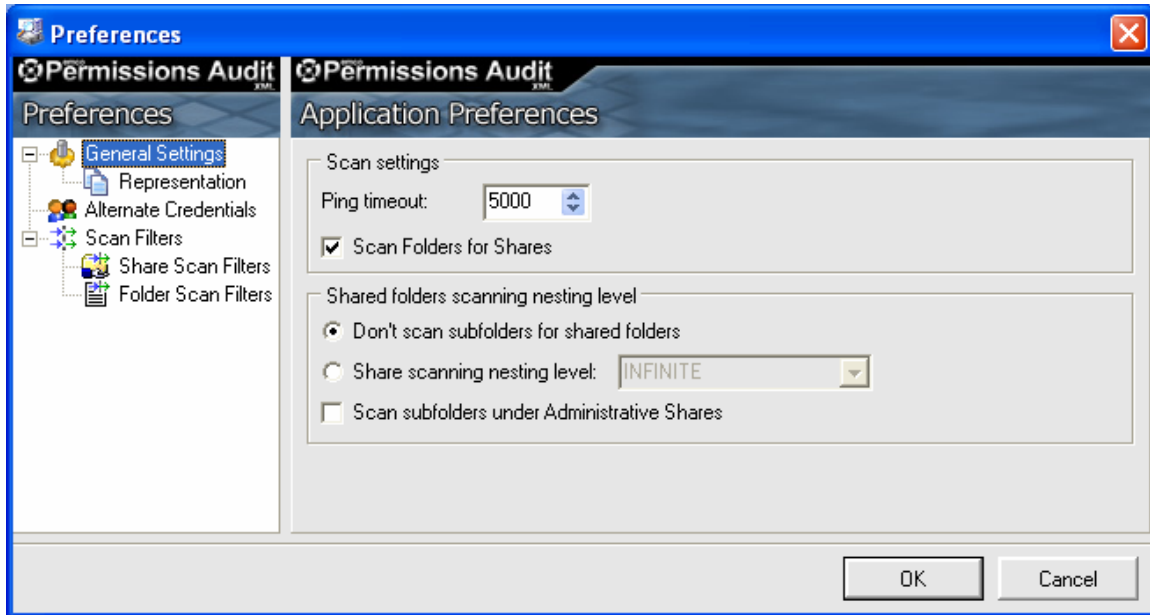
The status bar at the bottom indicates 'Scanning Shares and Folders Complete'.

You can select any folder in the middle table and in context menu select *Folder Permissions...* item, which opens folder *Properties* dialog. It's a standard Windows dialog, which allows seeing or changing permissions in the *Security* tab.



Very often you need to check folder permissions not only for shared folder itself, but also for subfolders in order to find permission differences. Sometimes permissions for parent and child folders can be different, so it potentially causes security problems. In order to simplify finding of such type of problems EMCO Permissions Audit XML have a special settings, which allow scanning subfolder permissions during scan of share. In order to define them go to *Options > Preferences... > General Settings*.

Options in *Shared folders scanning nesting level* define if subfolders will be scanned. By default *Don't scan subfolders for shared folders* option is selected, so you didn't see result of subfolders scan. If you want to scan subfolders, you should select *Share scanning nesting level* option and define depth of scan. Level 1 means that only direct subfolders of shared folders will be scanned. Level 2 means that subfolders of subfolders will be scanned, etc. If you need full scan you can define *INFINITE* level, but please be careful, because scanning of each additional level can significantly decrease scanning performance, because it should scan too many resources.



Auditing permissions for not shared folders

You can check permissions for not shared folder also. But in order to do it you define so-called folder conditions for a folder, which you want to scan. Why we should define folder conditions? Because in opposite case EMCO Permissions Audit XML should scan all folders for all computers in the network, but it's a very time consuming operation. Using folder conditions we can define exact list of folders, for which we need to get information about permissions.

In order to define folder conditions switch to the **Folders** tab and click on the **Folders Conditions View** in the toolbar. You will see a list of defined folder conditions. You can manage this list by adding or removing conditions. Please note that folder conditions list is assigned to node, currently selected in the **Computers** tree. So for example, if **Entire Network** node is selected, defined folders conditions should be assigned with it. When you define some folder condition, you should enter file system path and options for recursive scan. Recursive scan option is similar to recursive option for share scan – it defines do you need information about subfolder permissions or not. File system path define path to folder, which permissions you want to evaluate.

How folder conditions work? When you define for example path C:\Secure, it will be searched in remote computer and if such path exists, permissions for this folder are retrieved. A list of computes, where this path is searched, is defined by node to which folder condition is applied. So if you defined folder condition for **Entire Network** node, it will be searched in all computers in the network. If folder condition is applied to particular computer, it will be searched only in it.

Add Search Condition ✖

Permissions Audit

Search Condition

Path to folder:
 Browse...

Add subfolders recursively Nesting level: INFINITE ▼

OK Cancel