

Scanning Network and using Favorites

The new and improved EMCO Permissions Audit XML Edition comes up with more effective and a faster network scan engine. That detects all available machines over a network and fetch all security related information more quickly then pervious versions.

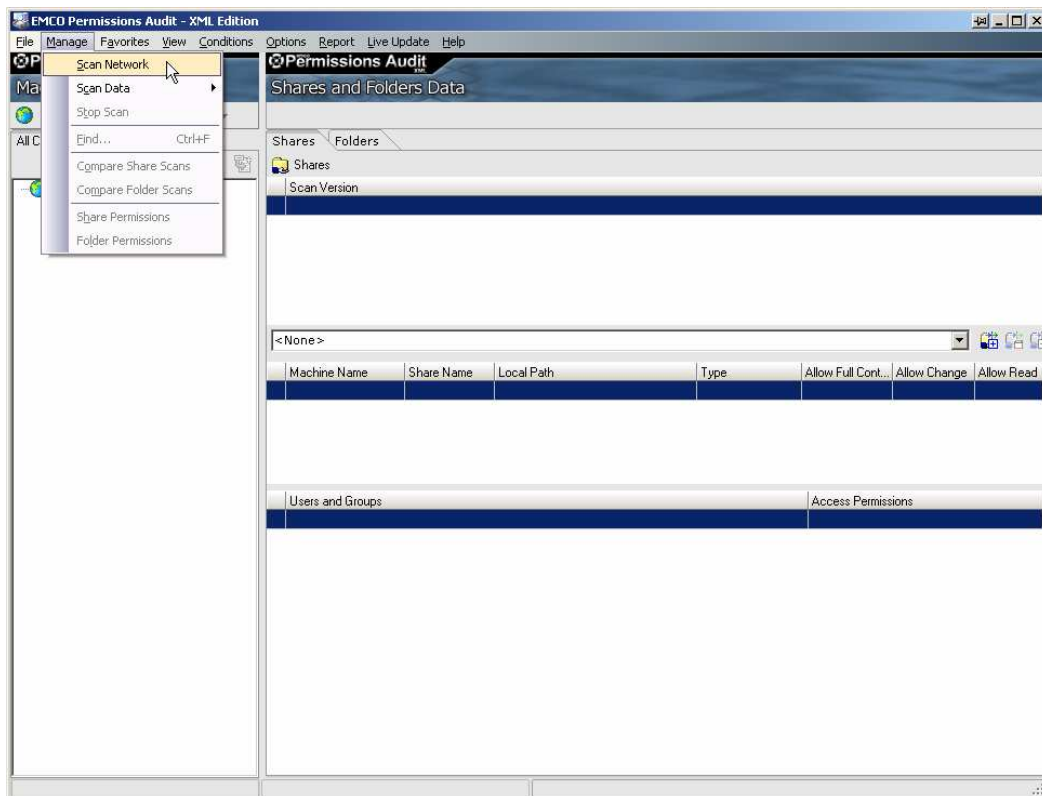
EMCO Permissions Audit XML Edition offers a single click scan options that makes the detection process of available machines, an easy tasks for network administrators.

This tutorial will guide you how you can scan yur network for all available machines.

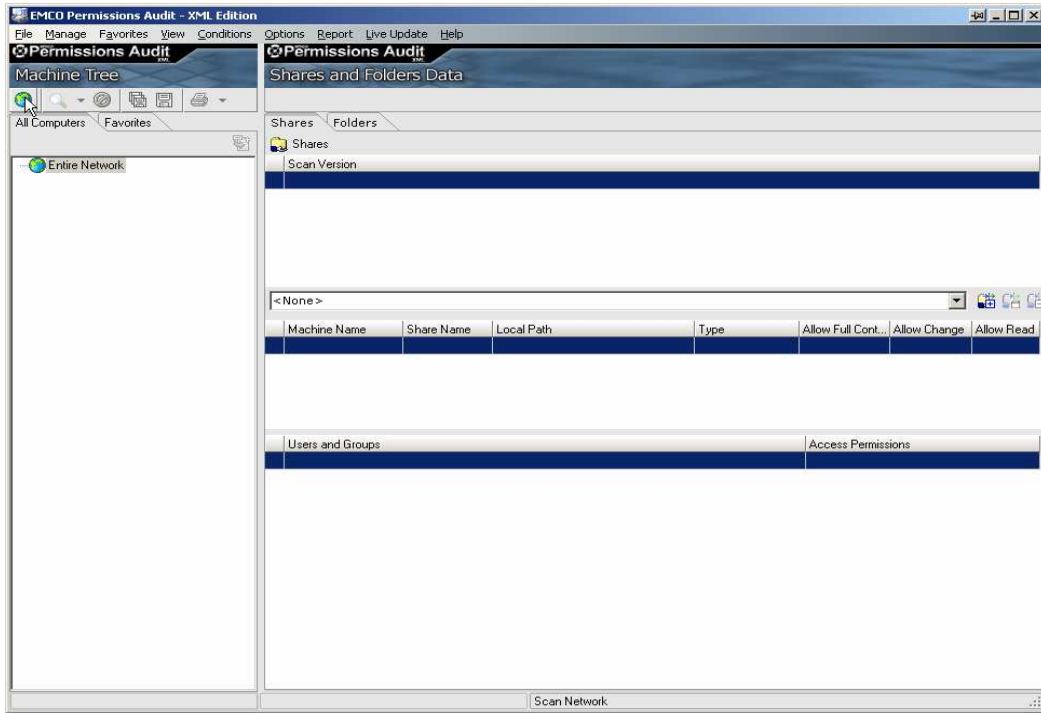
To scan your network:

To scan your network for all available machines in EMCO Permissions Audit XML Edition perform the following steps:

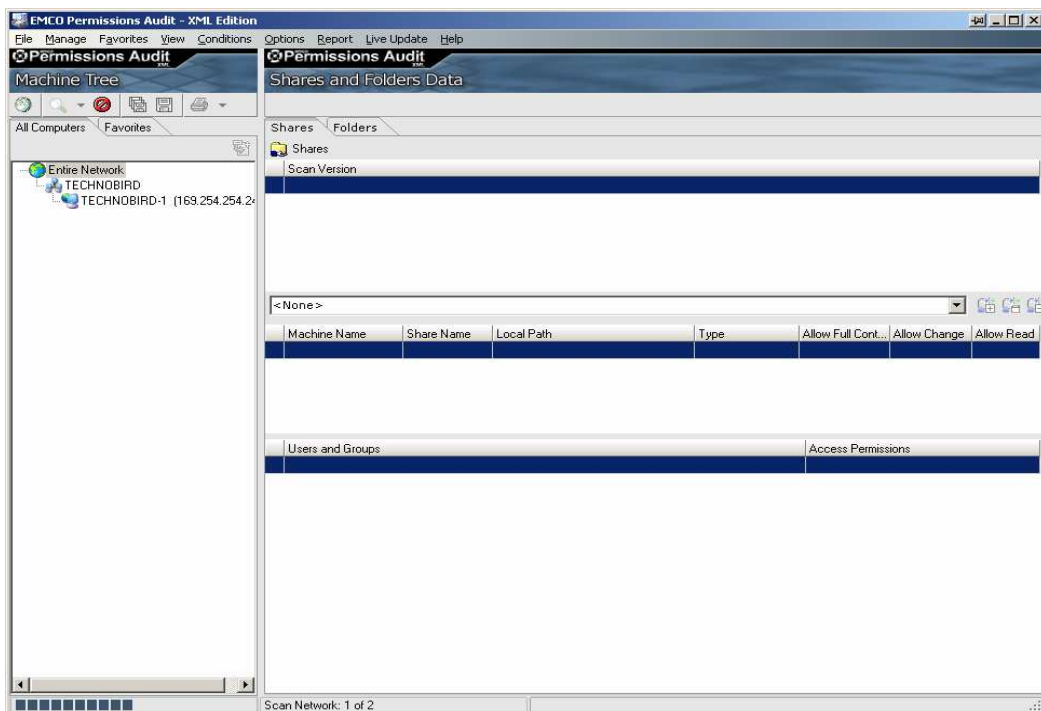
1. Click the **Scan Network** menu item shown under **Manage** menu.



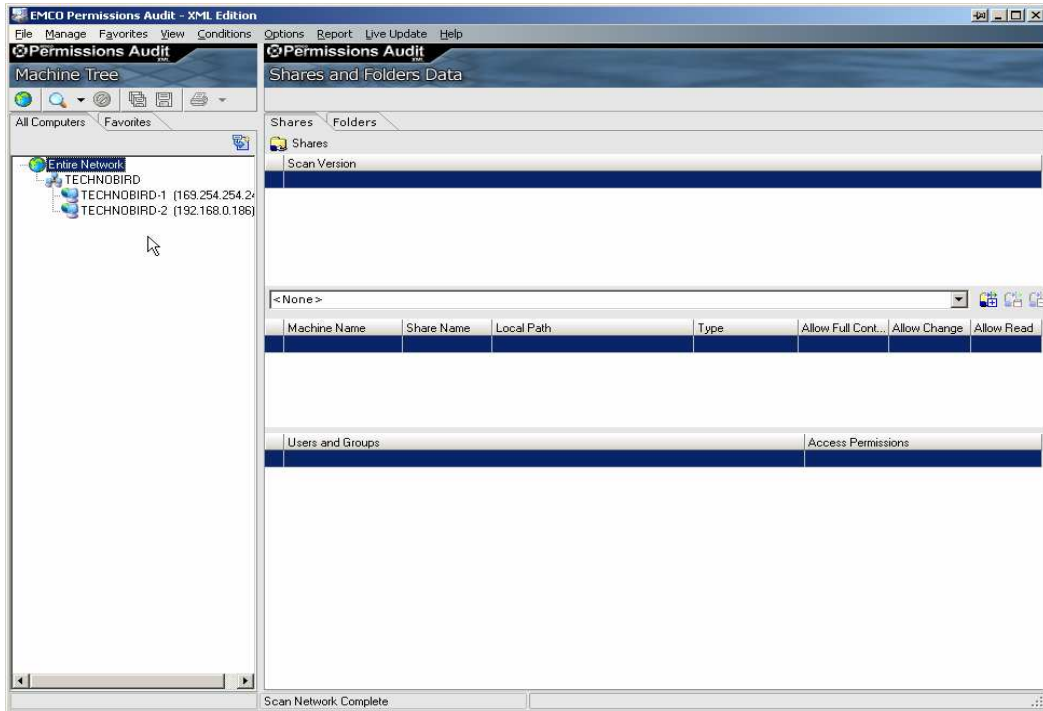
- Alternately you can click the **Scan LAN** icon shown on the toolbar located above **All Computers** tab.



- This will start the scanning all available machines on your network.



- When the scanning process complete all scanned machines will appear in the **All Computers** tab.

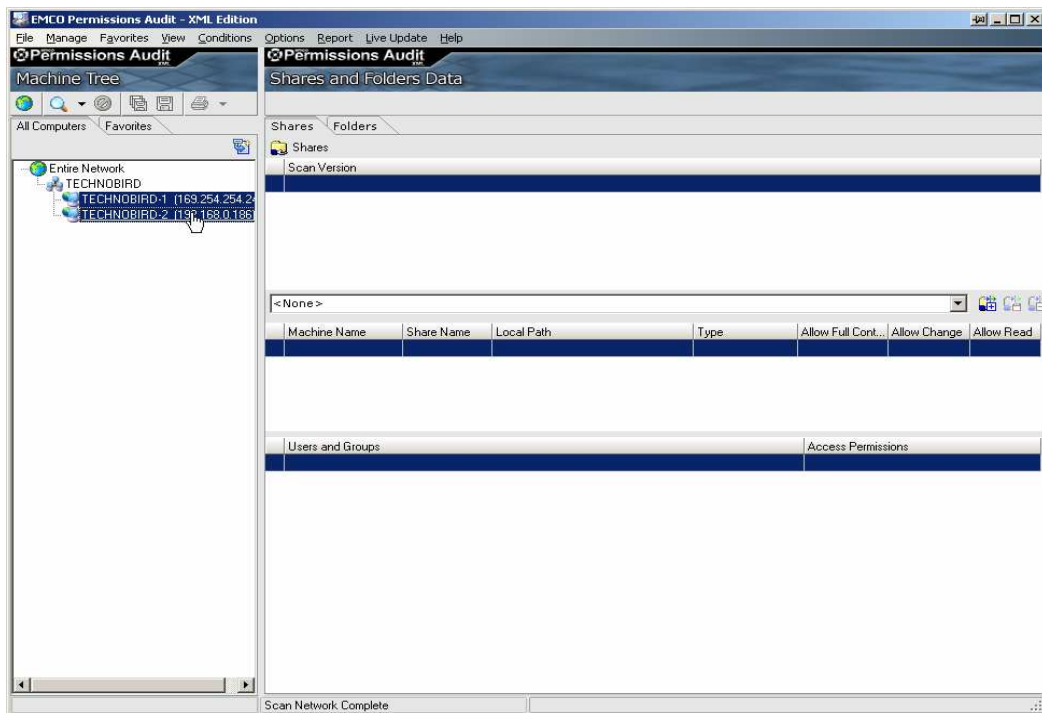


Adding Scanned Machines to Favorites

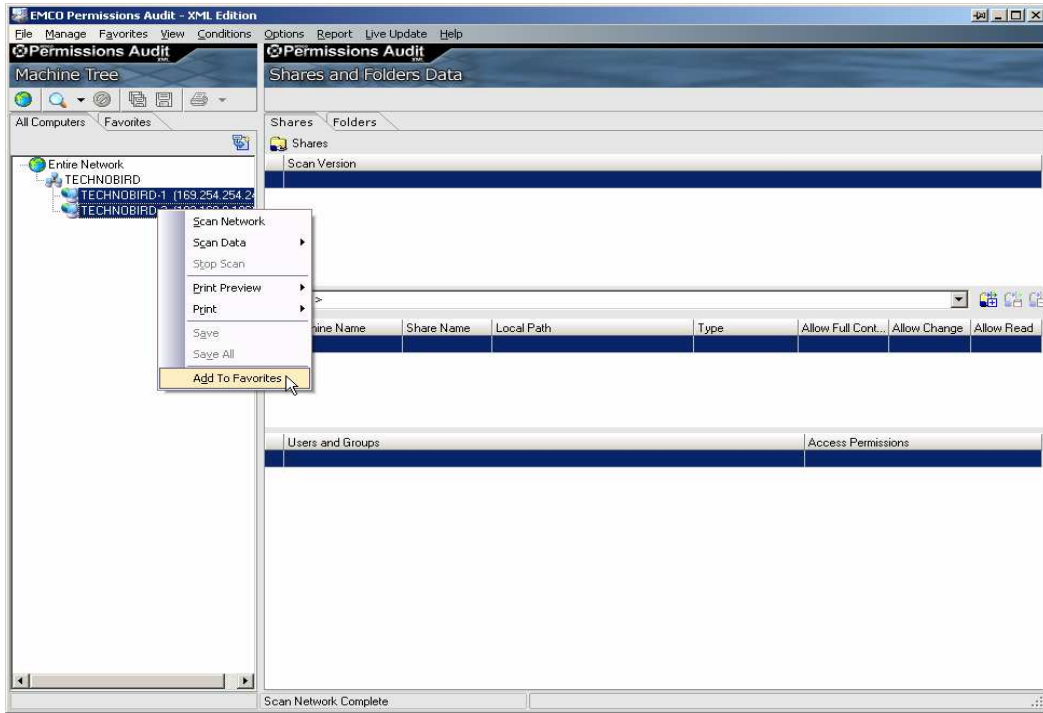
To add scanned machines to favorites:

To add scanned machines to favorites perform the follow steps:

1. Press the **Ctrl** Key and keep it pressed and click the machines that you want to **Favorites**.



- Right click any of the selected machine and select **Add to Favorites** menu item from the popup menu.



- You can now switch to the **Favorites** tab to see all machines that have been added to Favorites.

