

Scanning network for data

EMCO Permissions Audit XML Edition offers a variety of ways to fetch useful network security information from different machines that are available on your network.

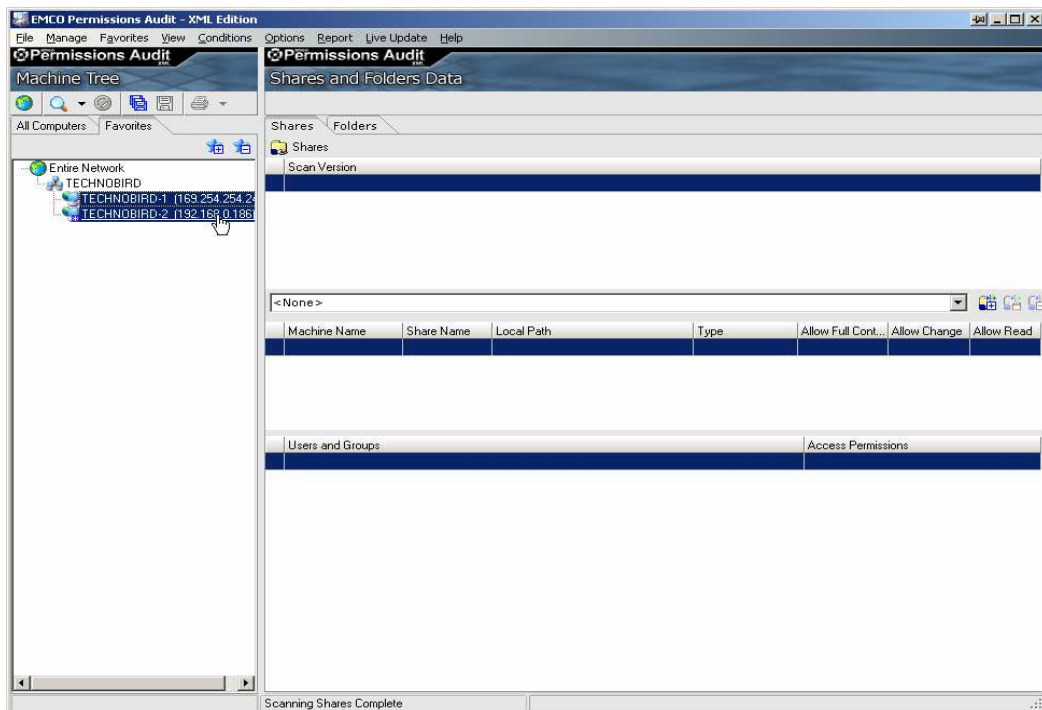
These are the options that are available in EMCO Permissions Audit XML Edition:

- ✦ Scan Share
- ✦ Scan Folder
- ✦ Scan Shares and Folders

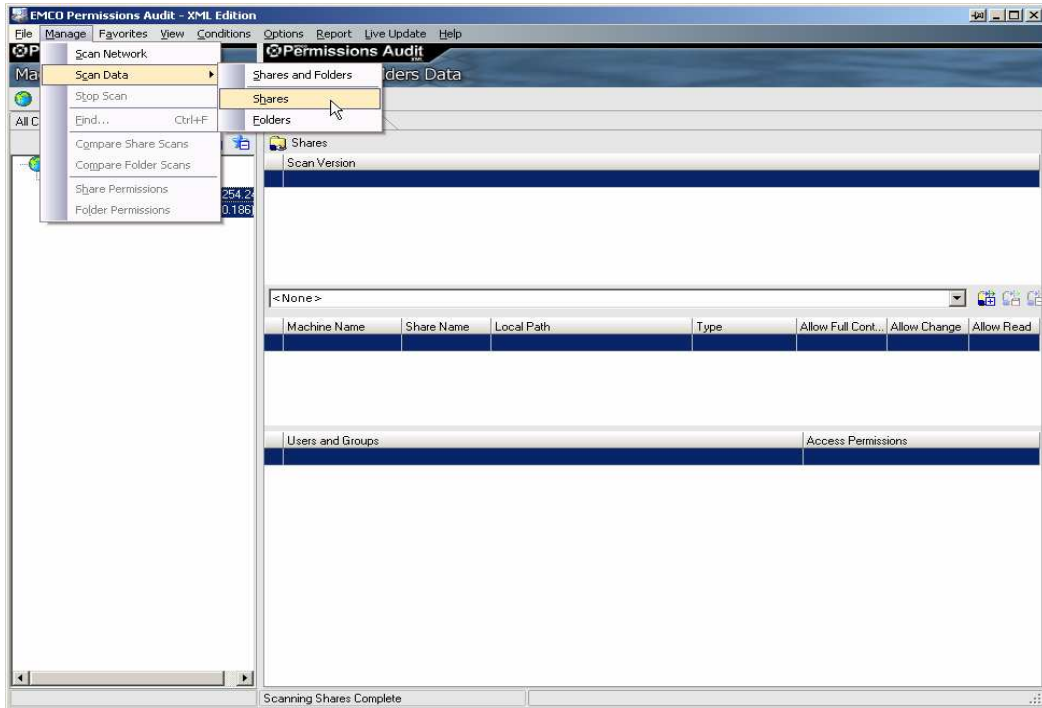
To scan your network for Shares

To scan your network for Shares in EMCO Permissions Audit XML Edition, perform the following steps:

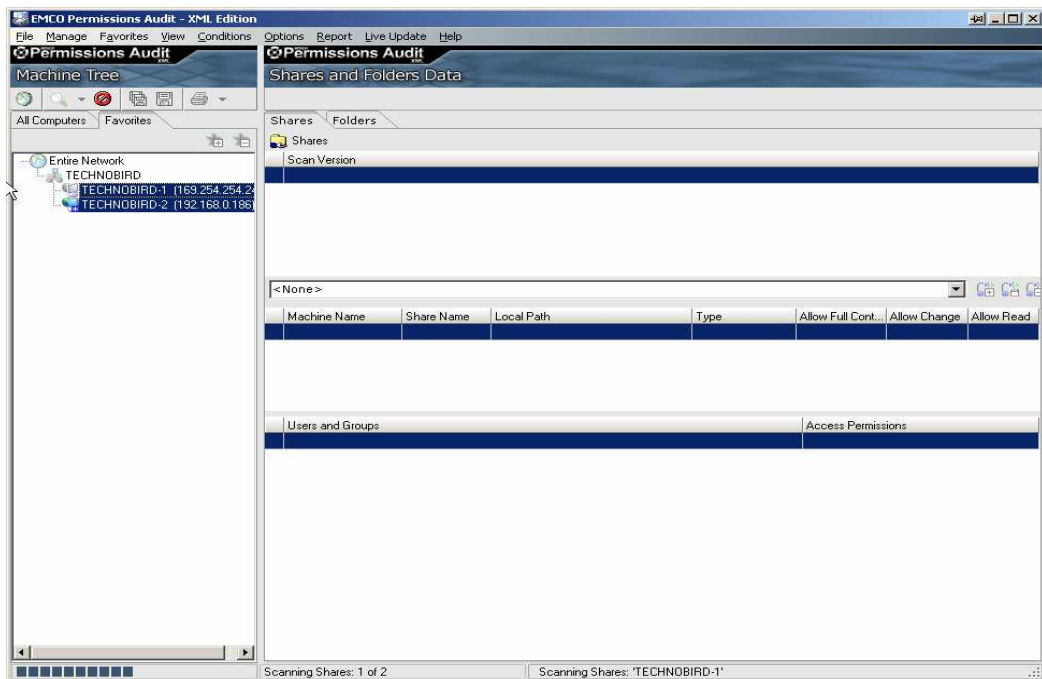
1. Press the Ctrl key and keep it pressed and select the machines that you want to process from **Available Machines** tab.



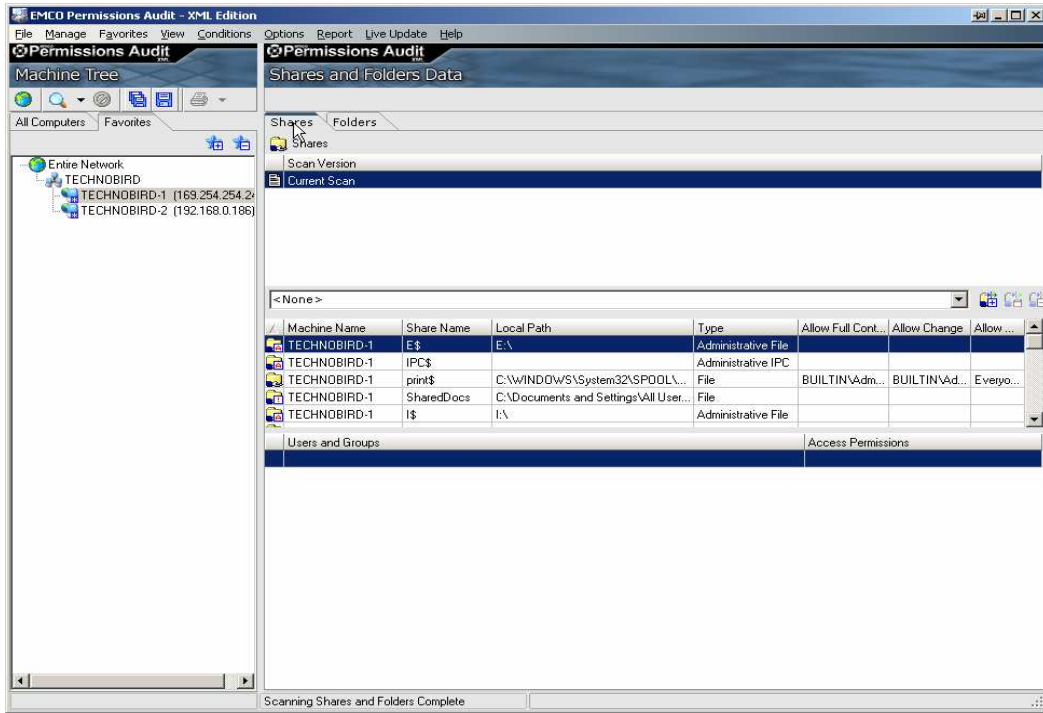
2. Move your mouse over **Scan Data** menu item shown under **Manage** menu and click **Shares** menu item from the popup menu.



3. This will start scanning your selected machines for information about available **Shares**.



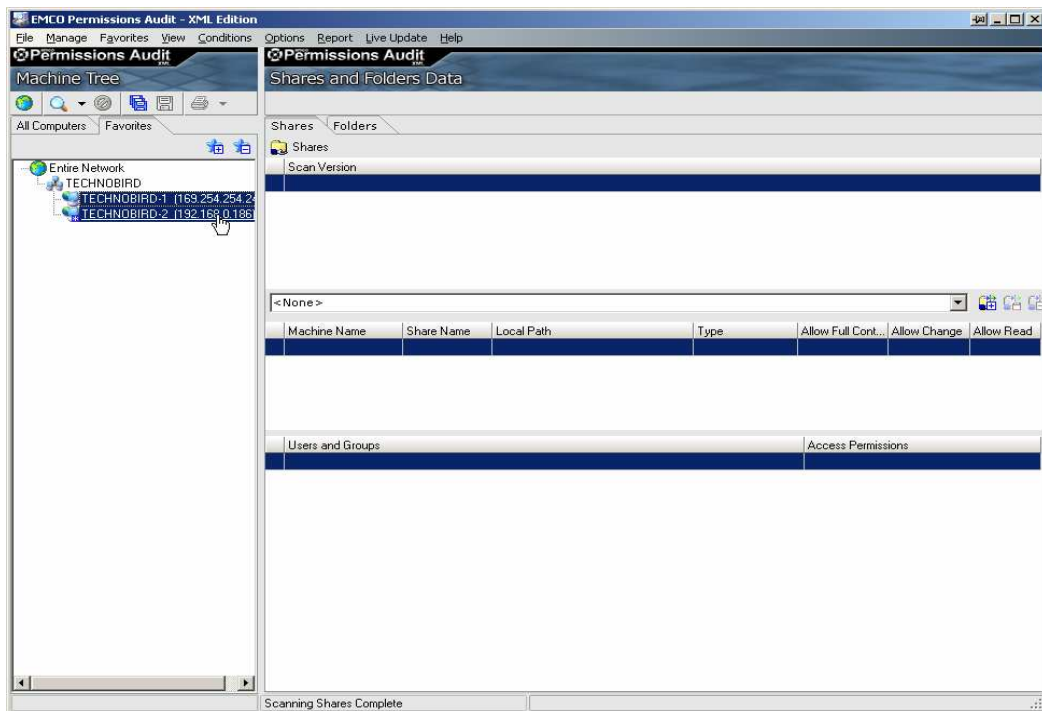
- When the scanning process completes click any of the machines from the available machines tab and switch to **Shares** tab to see the fetched information.



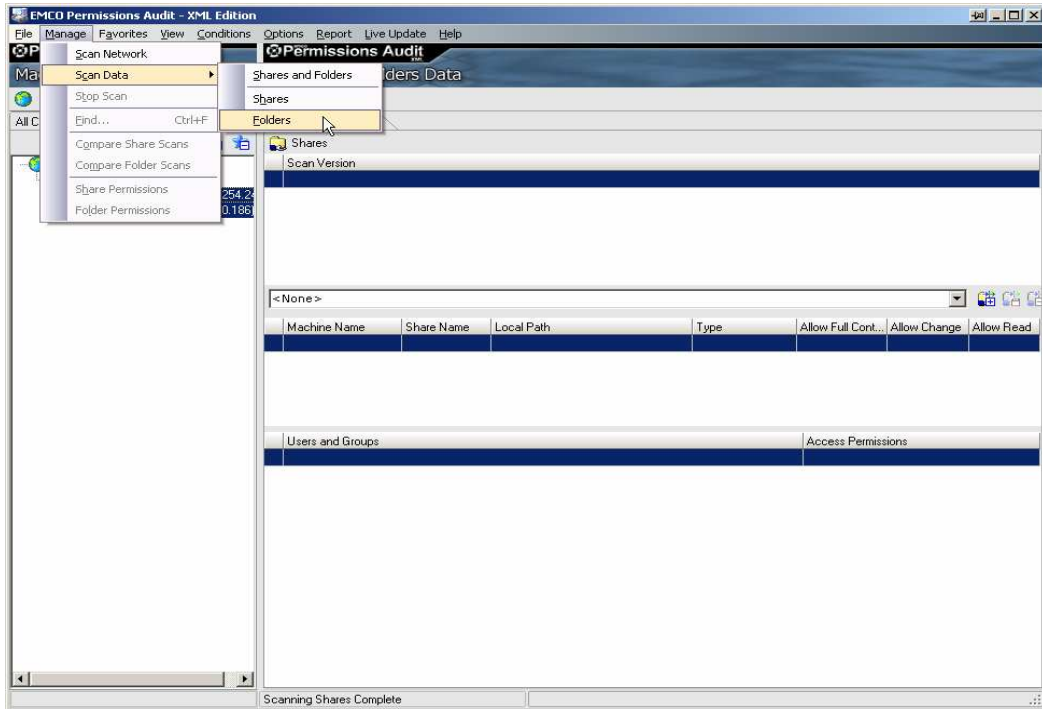
To scan your network for Folders

To scan your network for Folders in EMCO Permissions Audit XML Edition, perform the following steps:

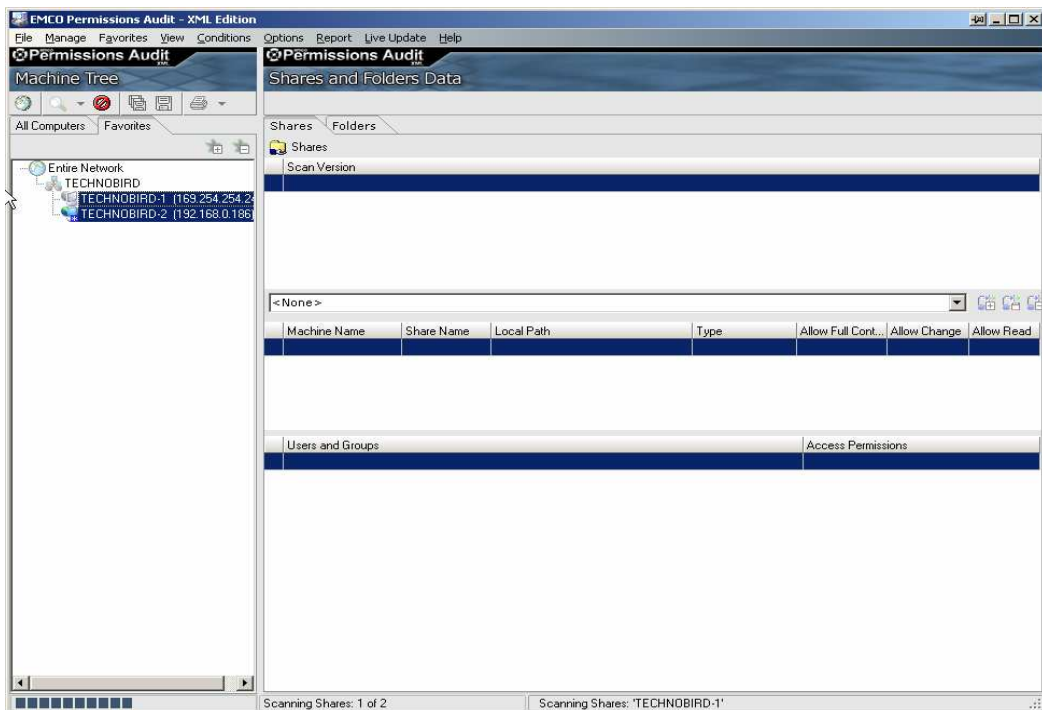
1. Press the Ctrl key and keep it pressed and select the machines that you want to process from **Available Machines** tab.



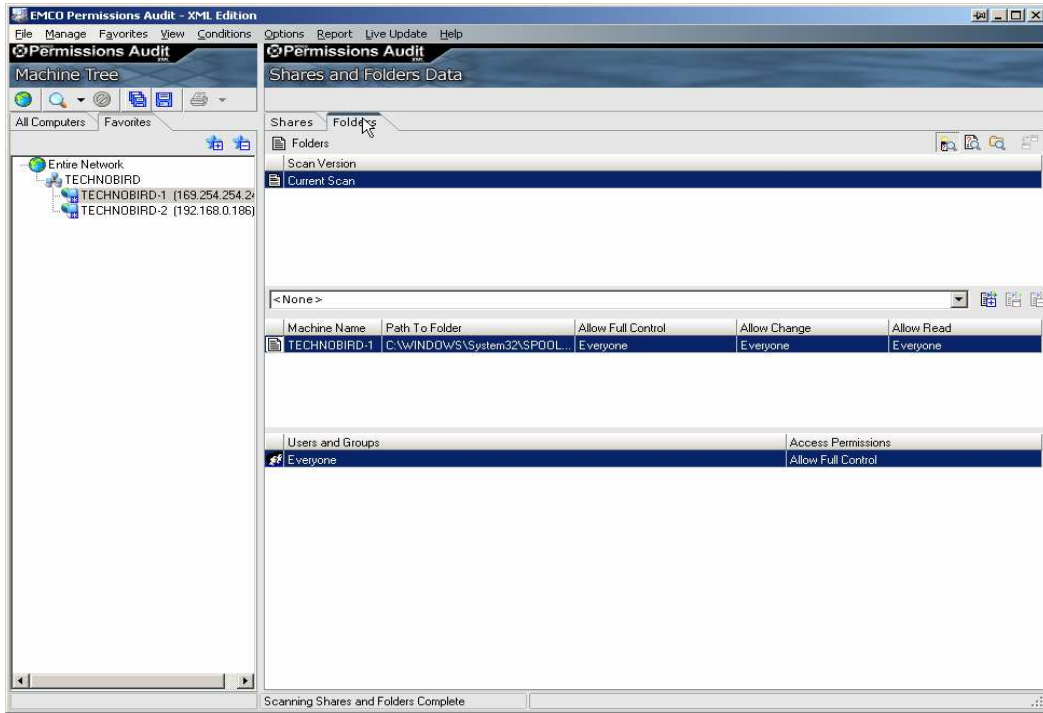
2. Move your mouse over **Scan Data** menu item shown under **Manage** menu and click **Folders** menu item from the popup menu.



3. This will start scanning your selected machines for information about available **Folders**.



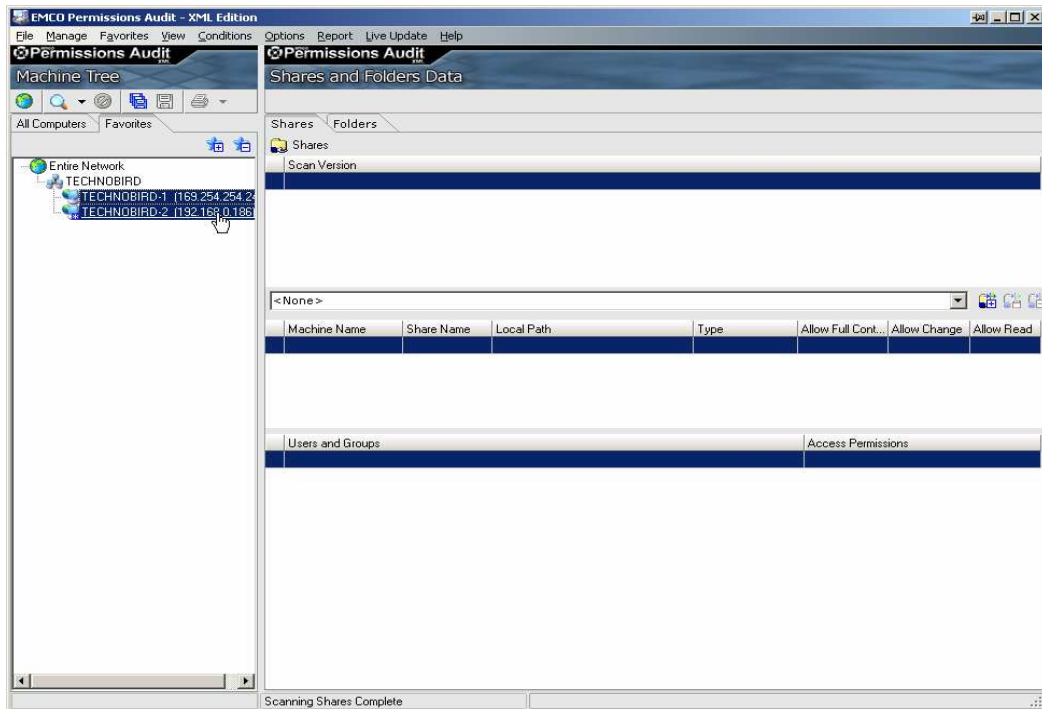
- When the scanning process completes click any of the machines from the available machines tab and switch to **Folders** tab to see the fetched information.



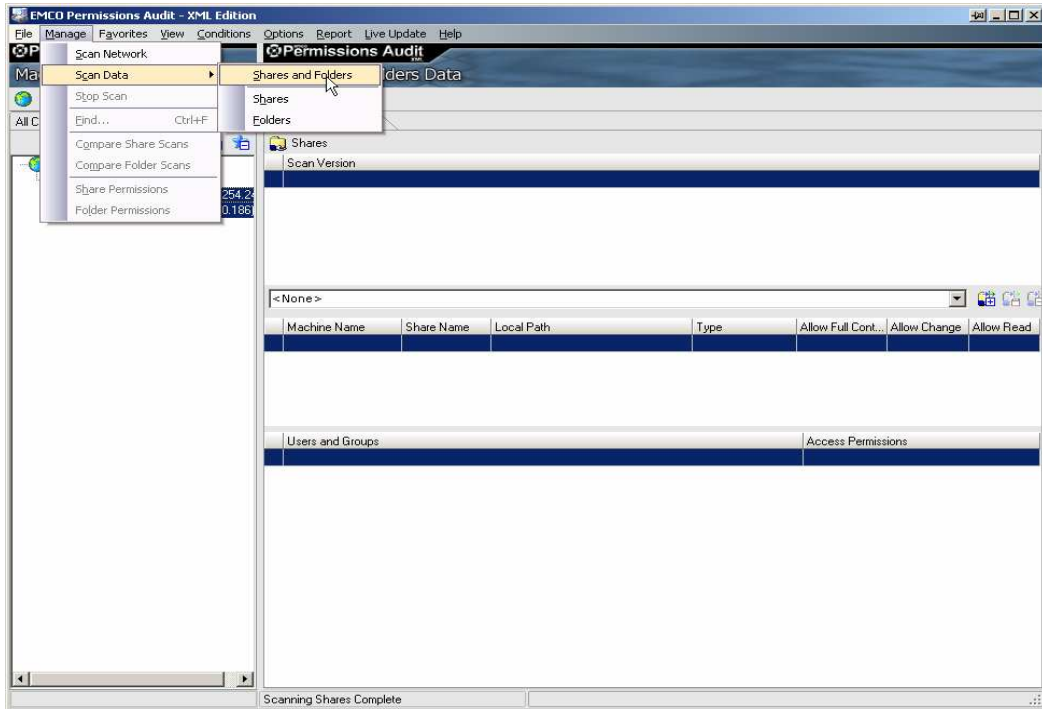
To scan your network for Shares and Folders

To scan your network for Shares and Folders in EMCO Permissions Audit XML Edition, perform the following steps:

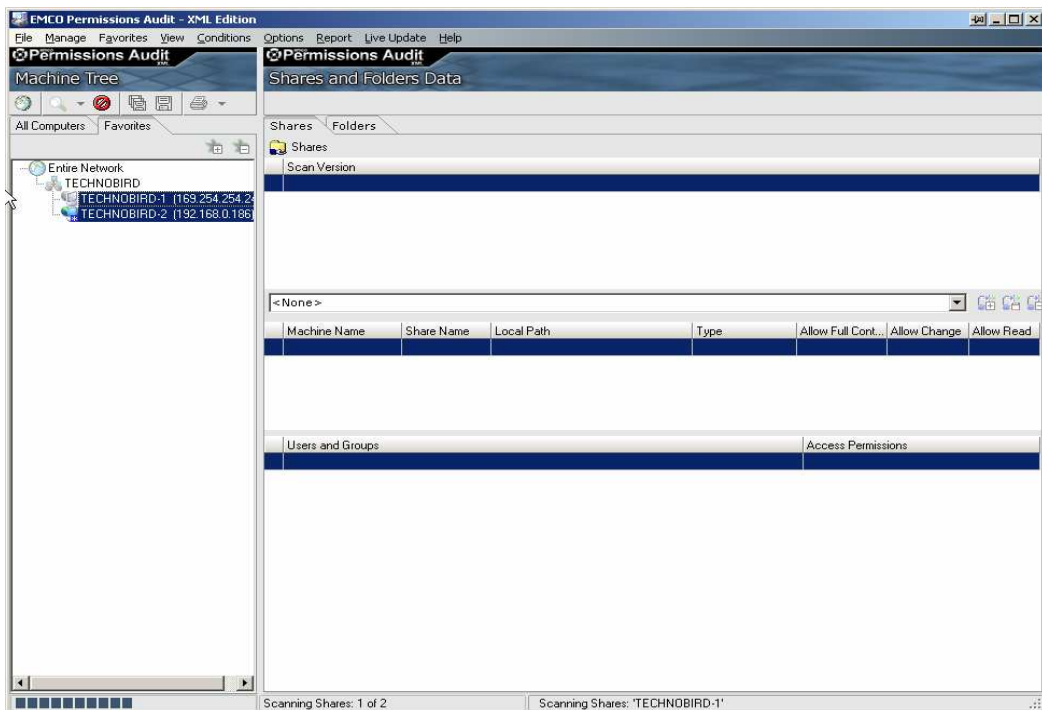
1. Press the Ctrl key and keep it pressed and select the machines that you want to process from **Available Machines** tab.



2. Move your mouse over **Scan Data** menu item shown under **Manage** menu and click **Shares and Folders** menu item from the popup menu.



- This will start scanning your selected machines for information about available **Shares and Folders**.



- When the scanning process completes click any of the machines from the available machines tab and switch to **Shares** or **Folders** tab to see the fetched information.

