

Using Find feature

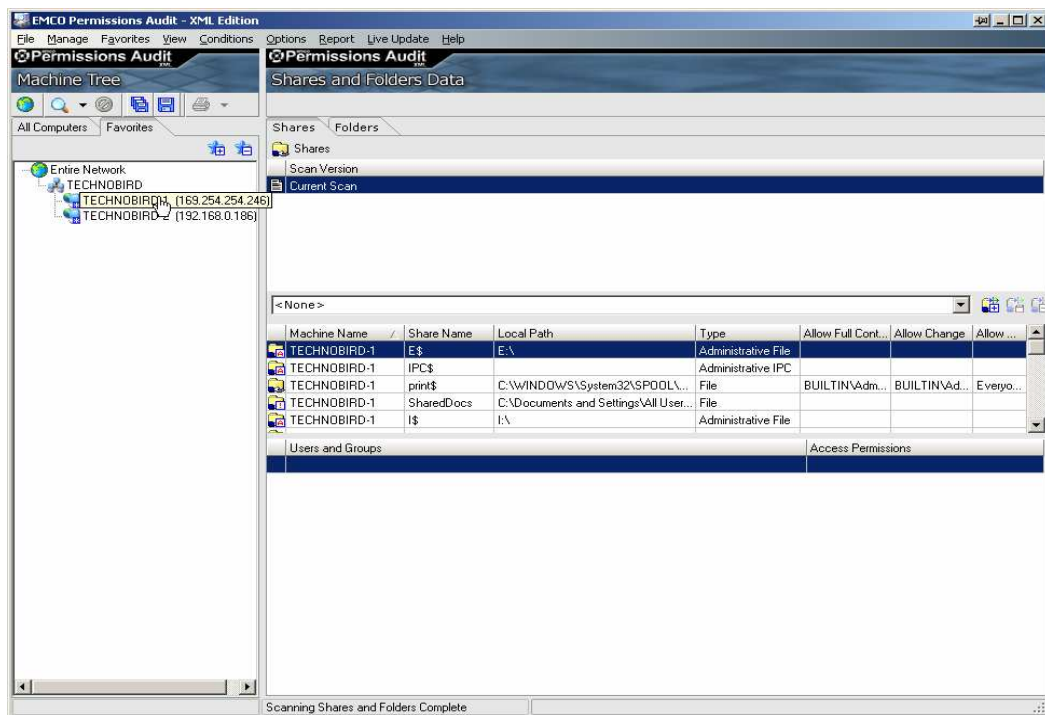
EMCO Permissions Audit XML Edition comes up with a new feature “Find “that enables you to perform a details search operation on your scanned data.

This tutorial will guide you on performing a search operation on your scanned data using a powerful Find feature of EMCO Permissions Audit XML Edition..

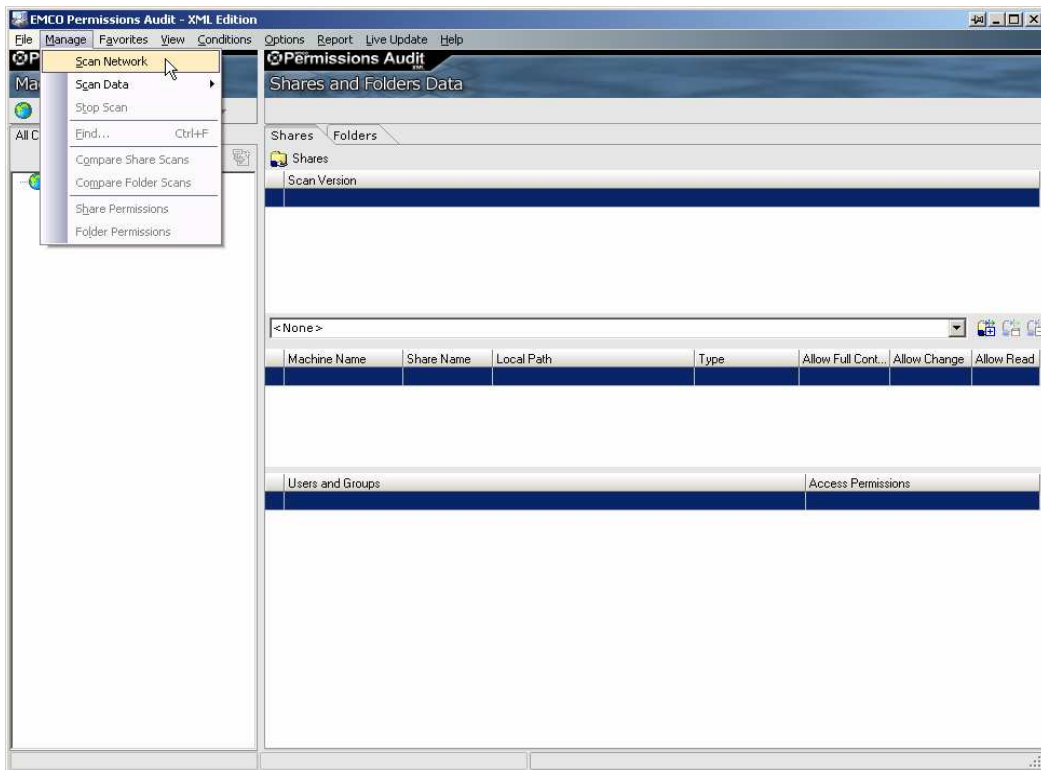
To perform search on your scanned data:

To perform search operation on your scanned data in EMCO Permissions Audit XML Edition perform the following steps:

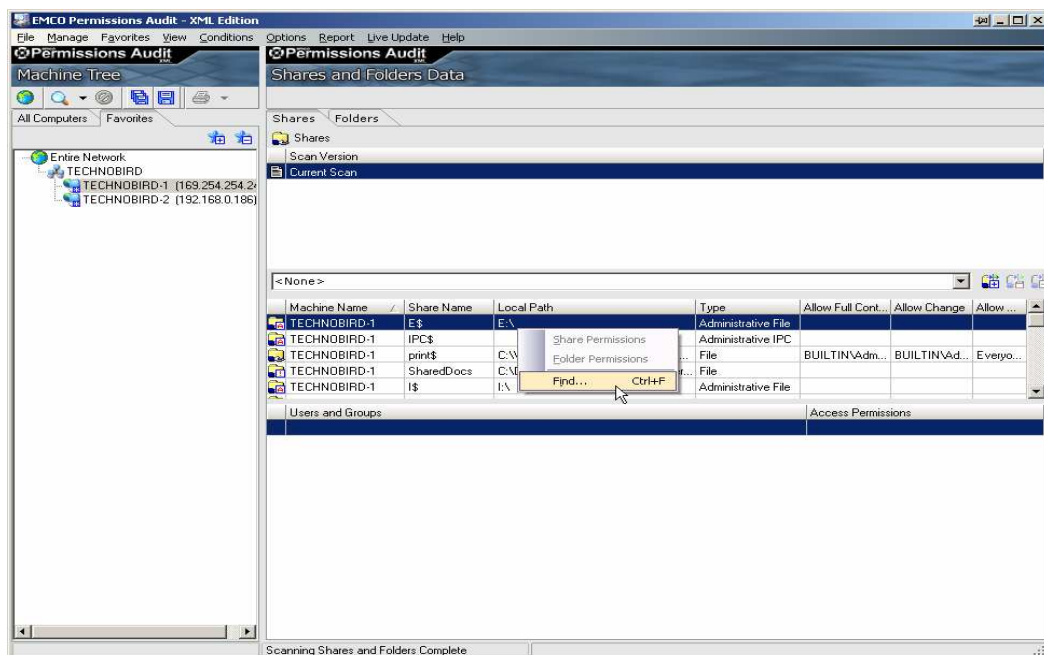
1. Select the machine that you want to process from **Available Machines** tab.



2. Switch to **Shares** or **Folders** tab depending on your requirements.



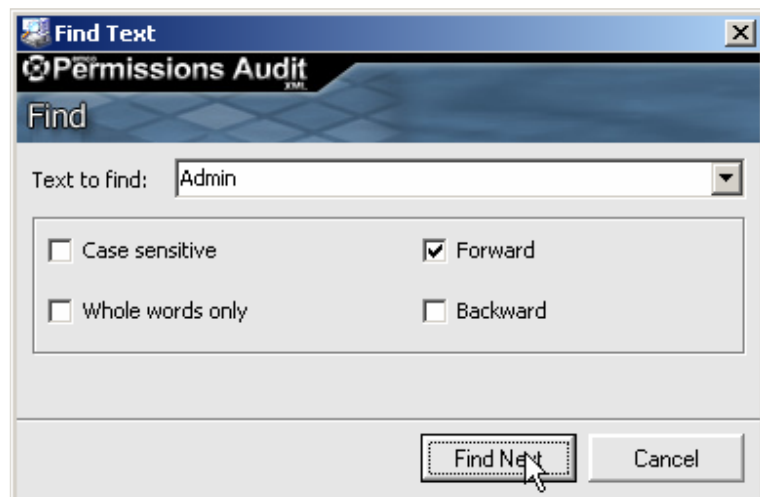
3. Right click on your required scan data and click **Find** menu item form the popup menu.



4. **Find Text** dialog box will appear on the screen.
5. Type in your required string that you want to search on the fetched data in the **Text to Find** textbox.



6. If you want to perform a case sensitive search; check the **Case Sensitive** checkbox.
7. If you want to see only the results that have exact match of the searched string; check the **Whole words only** checkbox.
8. To perform search on the records that follow after the selected record; check the **Forward** checkbox.
9. To perform search on the records that follow before the selected record; check the **Backward** checkbox.
10. Click **Find Next** button to see the next available match for your search.



11. The records matching your selected search criteria will be highlighted.

