

Adding machines manually in Remote Administration 3.0

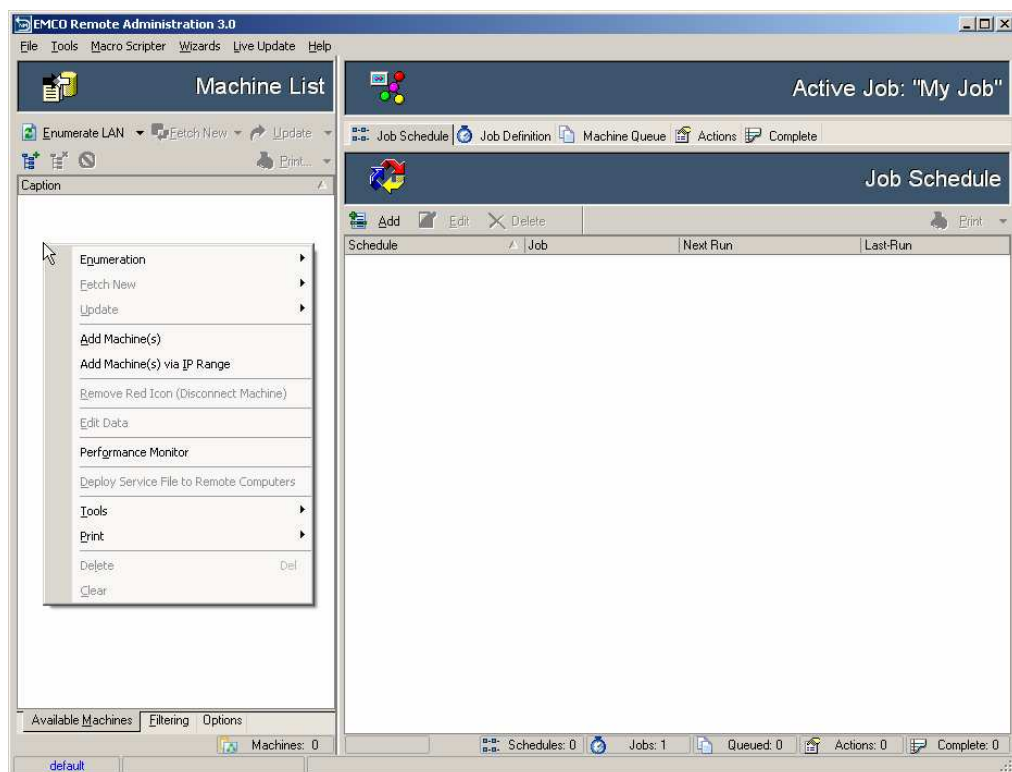
EMCO Remote Administration 3.0 provides two different ways to add machines manually.

WAY I

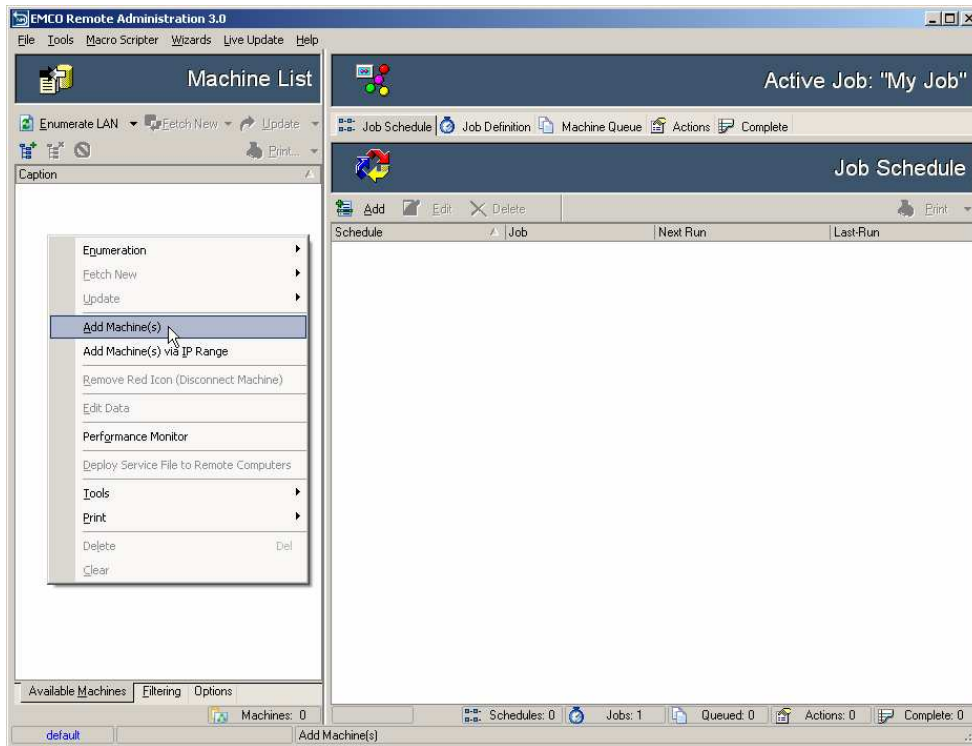
To add machines manually:

To add machines manually in EMCO Remote Administration 3.0 perform the following steps

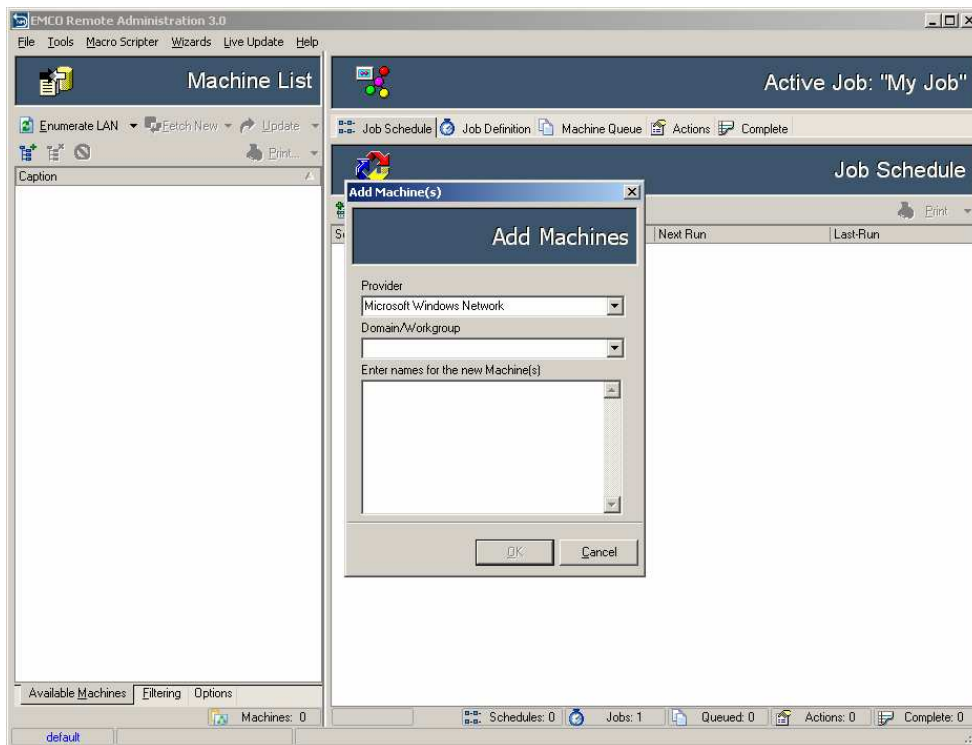
1. Right click on the machine tree in machine Tab, a popup menu will appear.



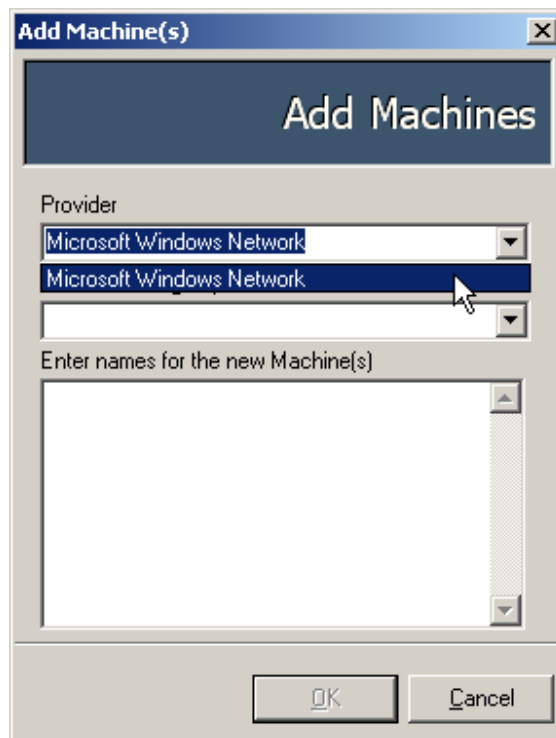
2. Select the **Add Machine(s)** menu item from the popup menu.



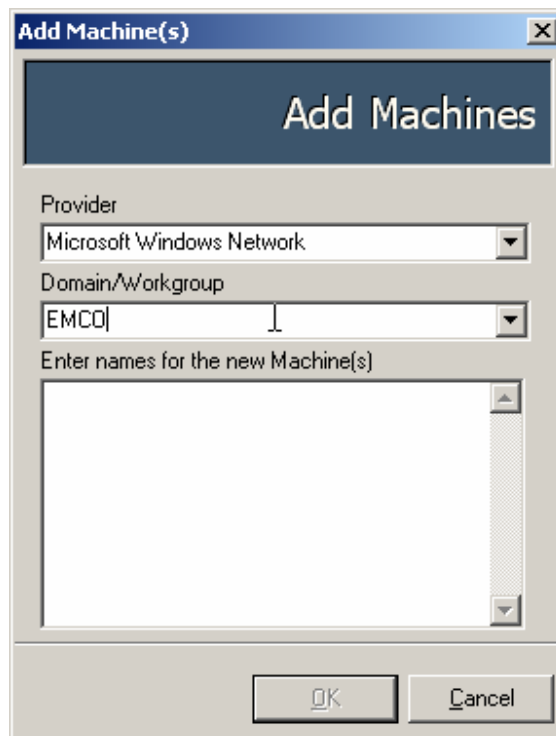
3. An **Add Machine(s)** dialog box will appear on the screen.



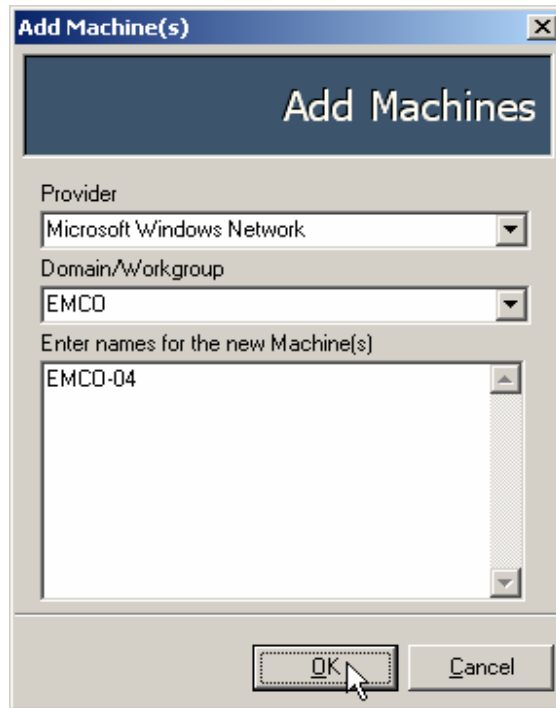
4. Select the provider of your network from the **Network Provider** drop down list.



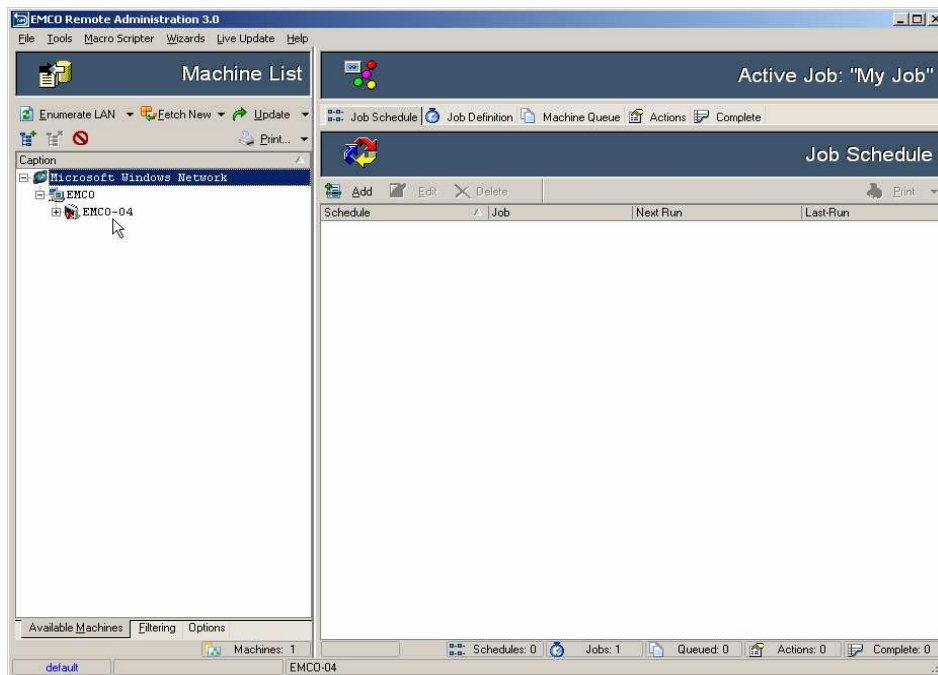
5. Type or select the **Domain/Workgroup** name from the drop down list.



6. Type the Machines name in the **Machines** Textbox and click the OK button.



7. The Scanned machines will appear in the **LAN tree** in the Available Machines Tab. You will see a Red mark with the name of the newly added machine. Please read the last section of this document to see the more information about that read mark and on how you can remove that red mark.

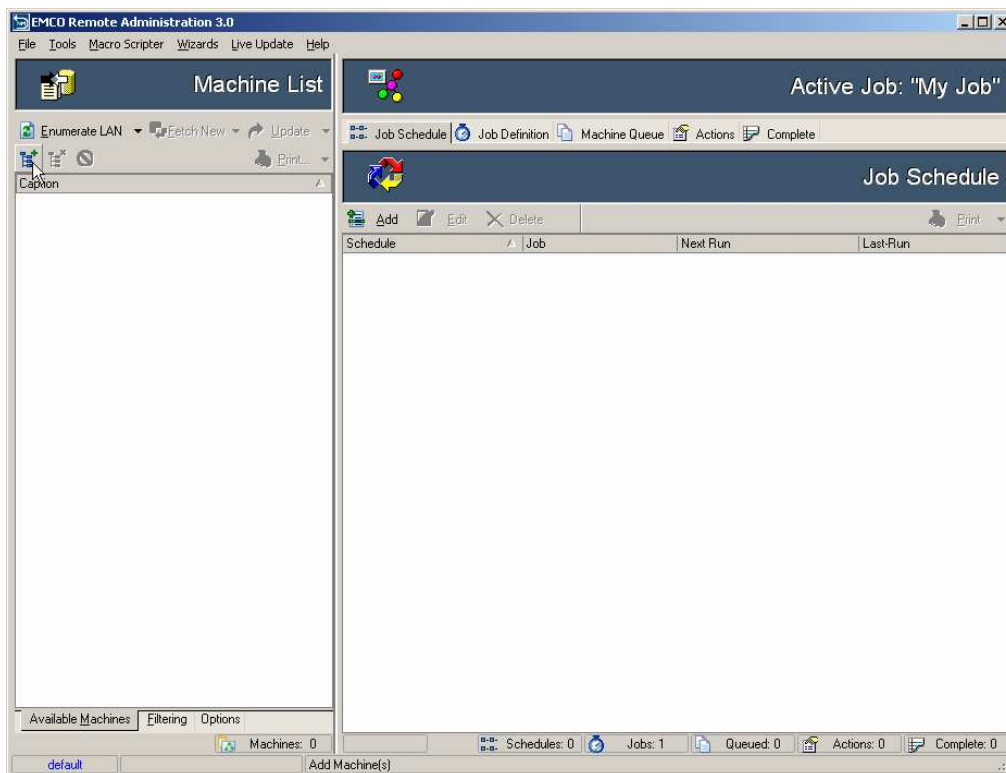


WAY II

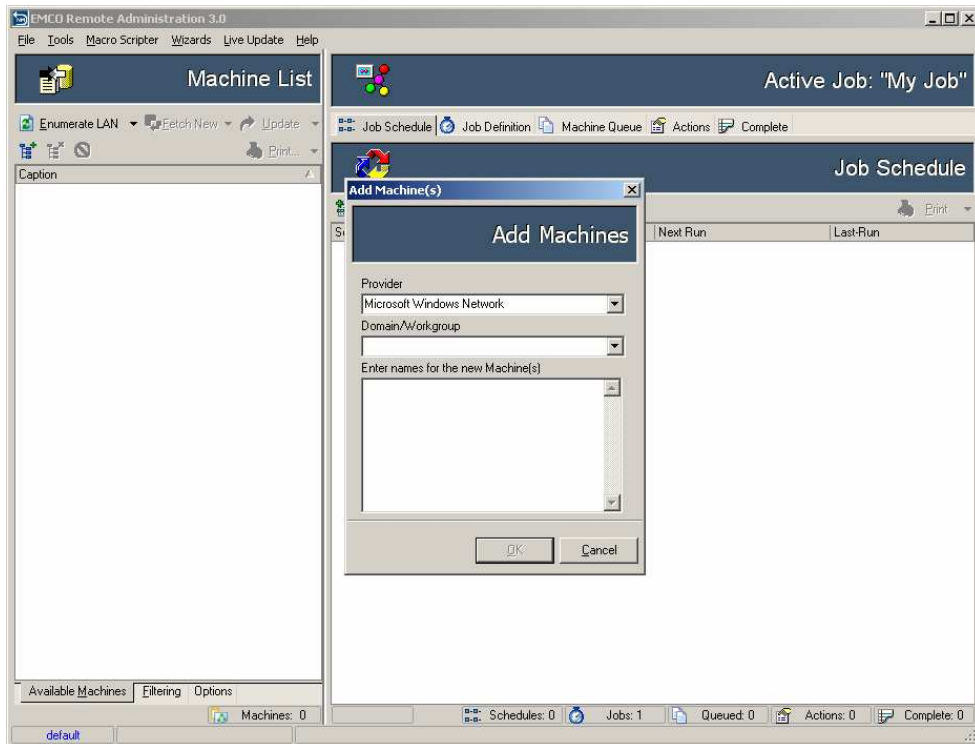
To add machines manually:

To add machines manually in EMCO Remote Administration 3.0 perform the following steps:

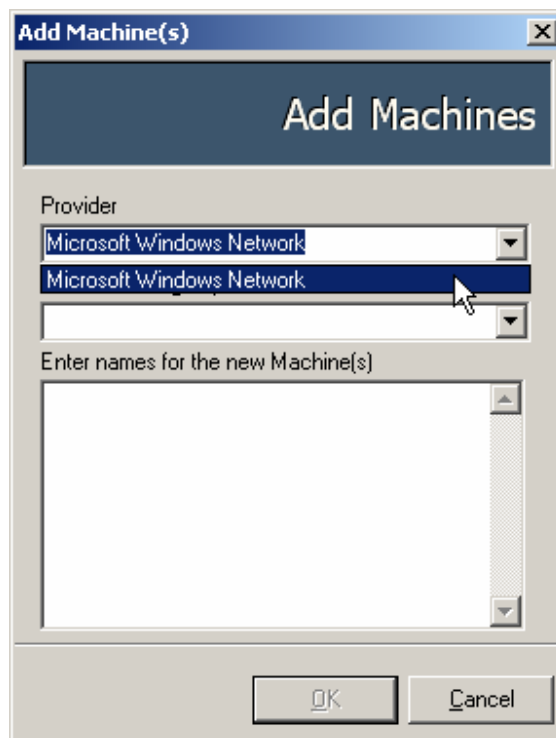
1. Click the **Add** button to add new machine manually in EMCO Remote Administration 3.0.



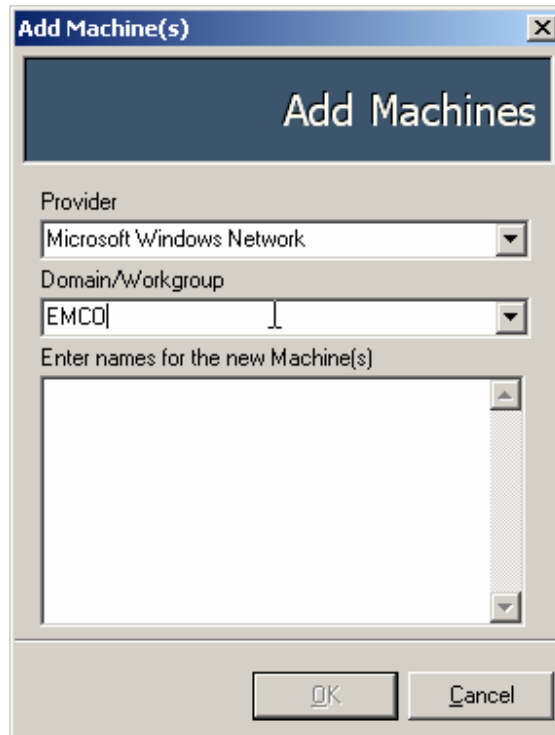
- An **Add Machine(s)** dialog box will appear on the screen.



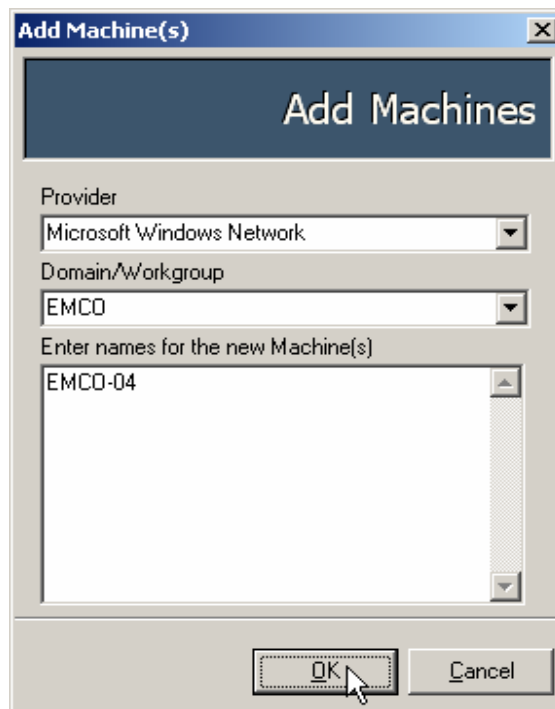
- Select the provider of your network from the **Network Provider** drop down list.



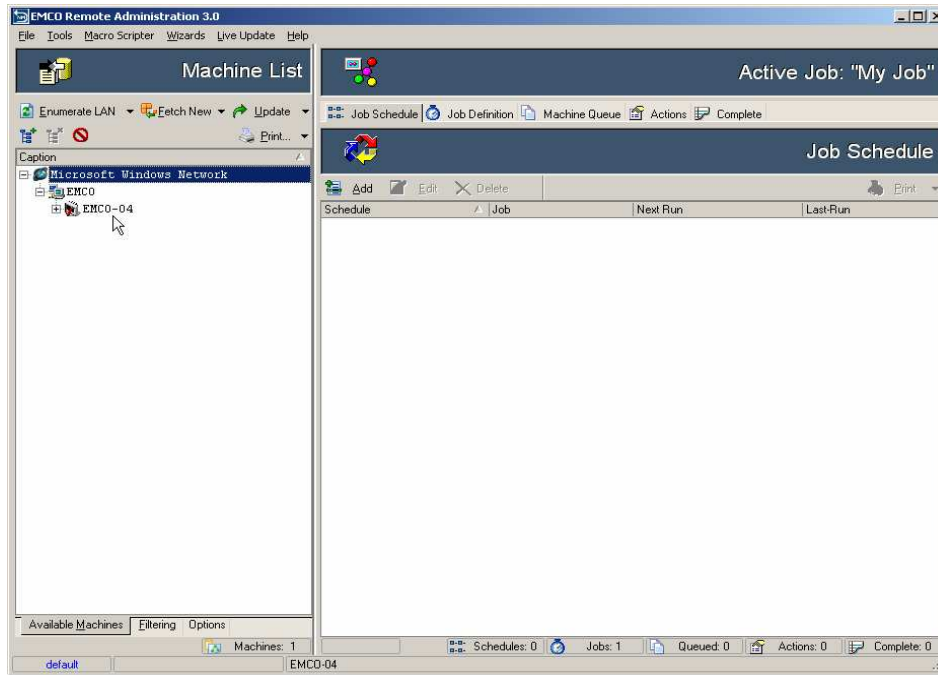
4. Type or select the **Domain/Workgroup** name from the drop down list.



5. Type the Machines name in the **Machines** Textbox and click the OK button.



6. The Scanned machines will appear in the **LAN tree** in the Available Machines Tab. You will see a Red mark with the name of the newly added machine. Please read the last section of this document to see the more information about that red mark and on how you can remove that red mark.



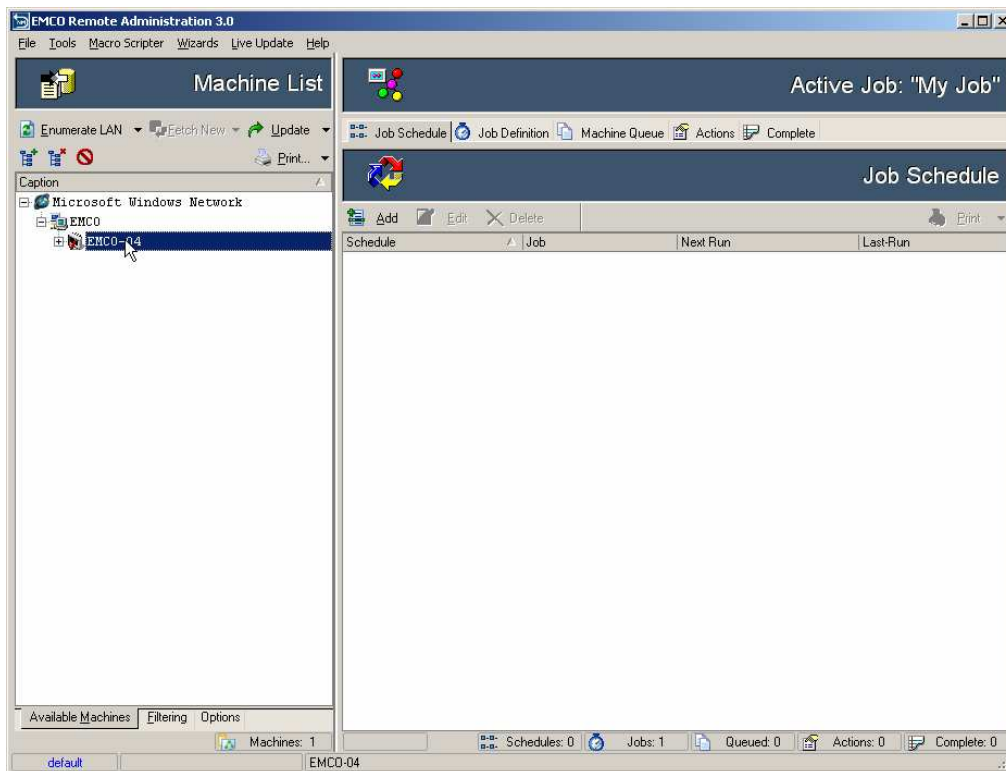
Removing red mark from the manually added machines

When you add machines manually in EMCO Remote Administration 3.0, a red mark is placed with the newly added machines.

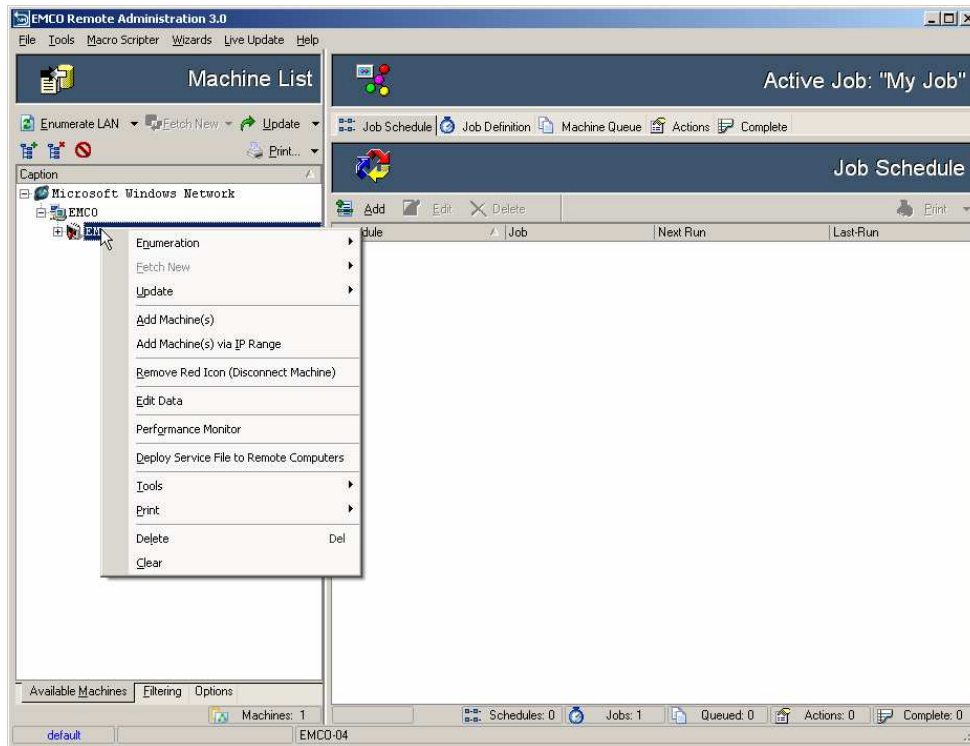
To remove Read Marks:

To remove the red marks from the manually added machines in EMCO Remote Administration 3.0 perform the following steps:

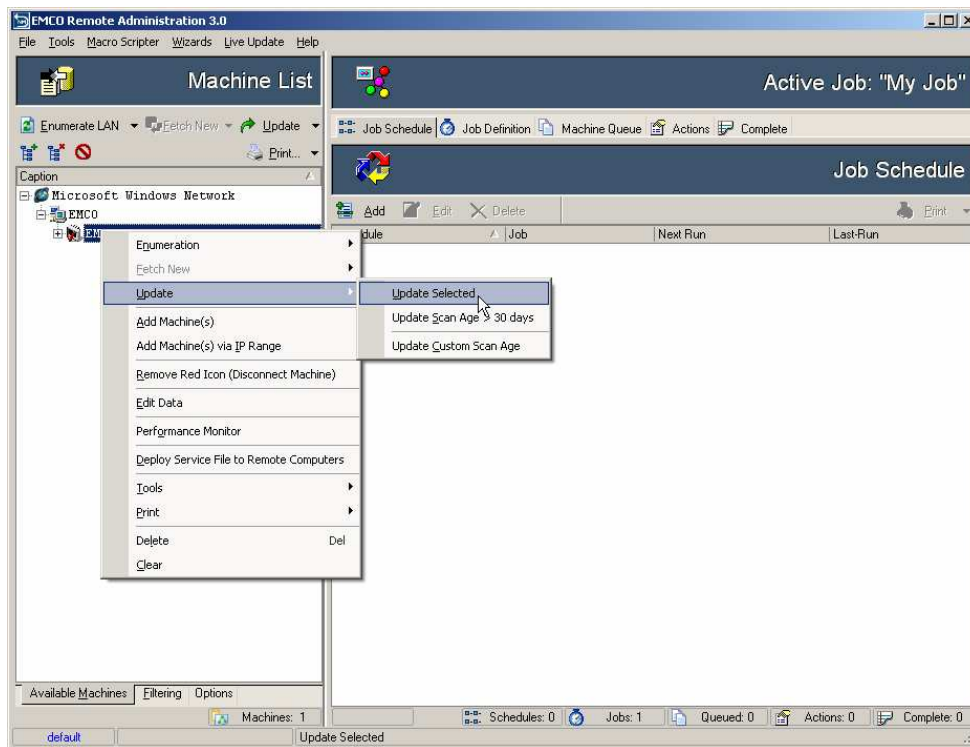
1. Press the Ctrl key and keep it pressed and select the machines from which you want to remove the red marks in the **LAN tree** on **Available Machines Tab**.



- Right Click any of the selected machines a popup menu will appear.



- Select the **Update Selected** menu item under **Update** popup menu.



4. The scanning process will begin, and it will collect the updated data from the machines.
5. When the scanning process finishes the red marks will be removed from the selected machines.

