

Enumerating LAN in EMCO Remote Administration 3.0

EMCO Remote Administration 3.0 provides three ways to scan your network:

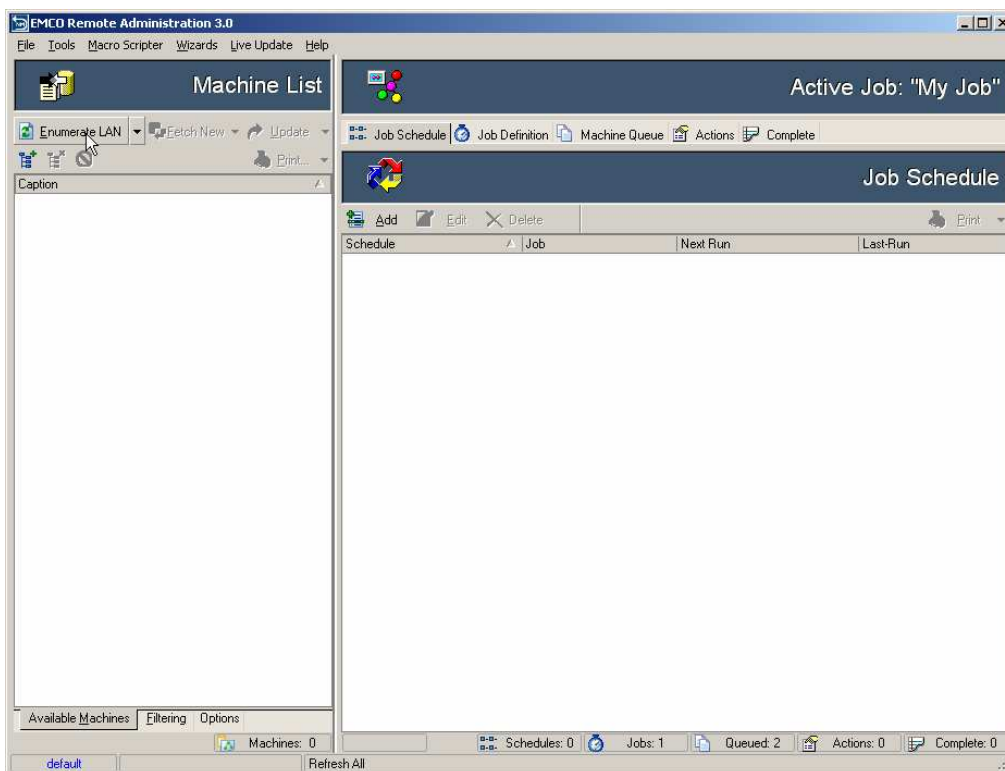
- ✧ Enumerate LAN for all Computers
- ✧ Enumerate LAN for Computers via Domain Name
- ✧ Enumerate LAN for Computers via range of IP addresses

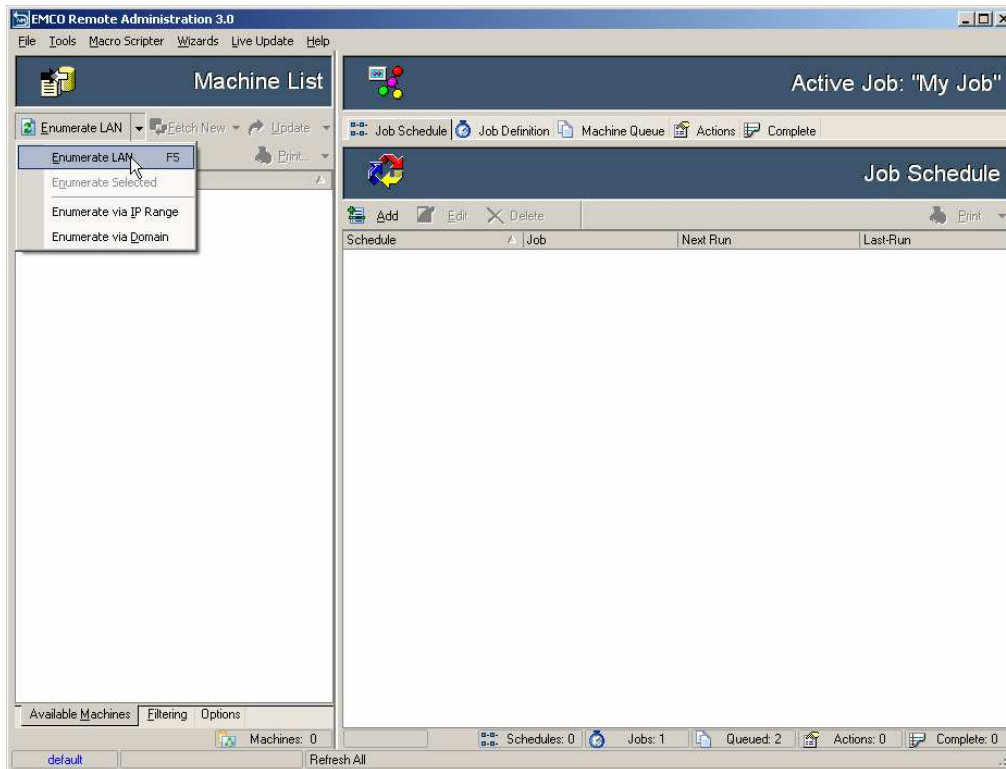
Enumerating LAN for All Machines

To Enumerate LAN for all Computers:

To enumerate all computers on your LAN perform the following steps:

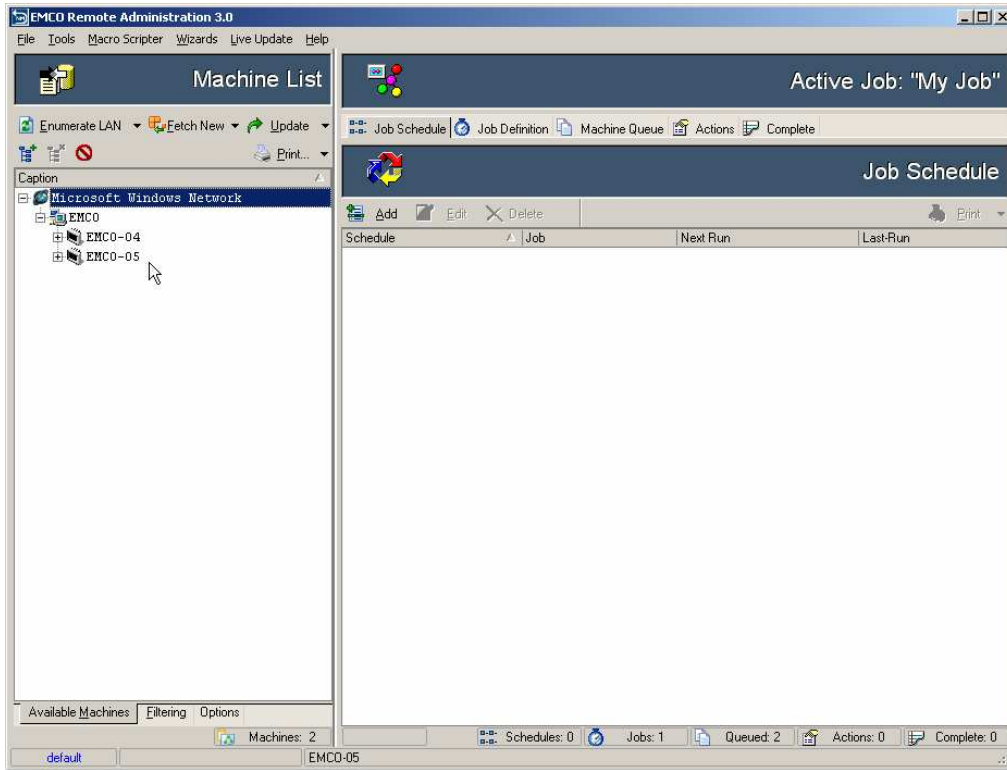
1. Click Enumerate LAN button from the toolbar or click the down arrow shown on the right of the Enumerate LAN button and select Enumerate LAN for computers.





2. Scanning process will begin.
3. To cancel scanning process, click the **Cancel** button shown at the lower left corner of the main window of the EMCO Remote Administration 3.0.

- When the scanning process will complete you will see the list of the scanned machine in the Machine tree in **Available Machines** Tab.

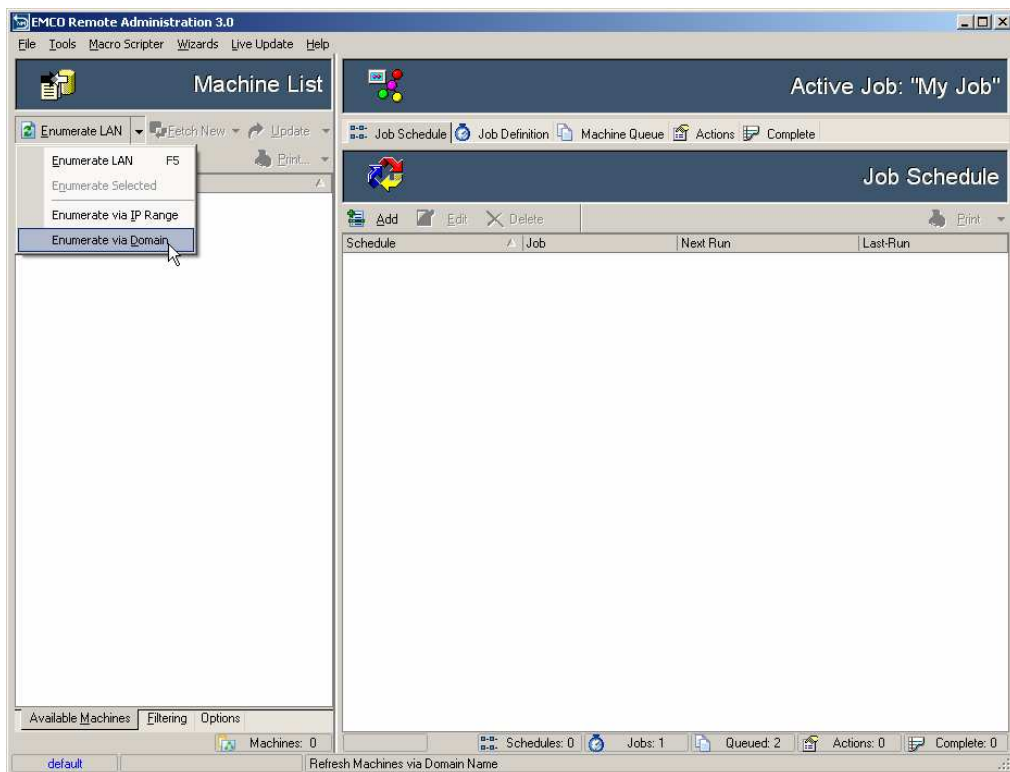


Enumerating LAN via Domain Name

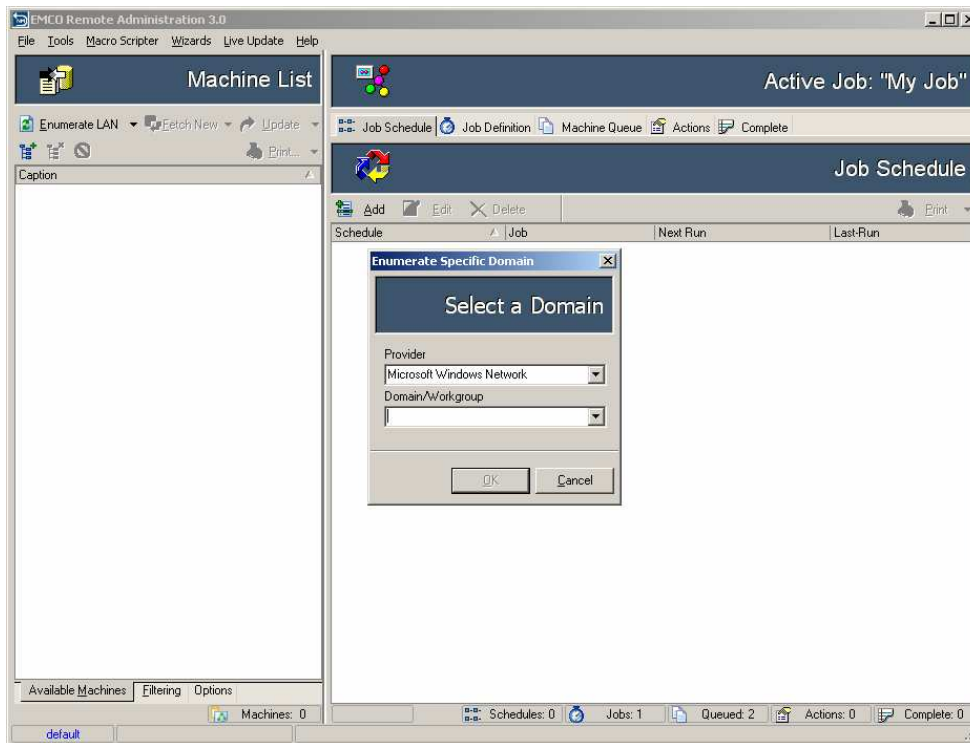
To Enumerate LAN for Computers via Domain Name:

To Enumerate LAN for Computers via Domain Name perform the following steps:

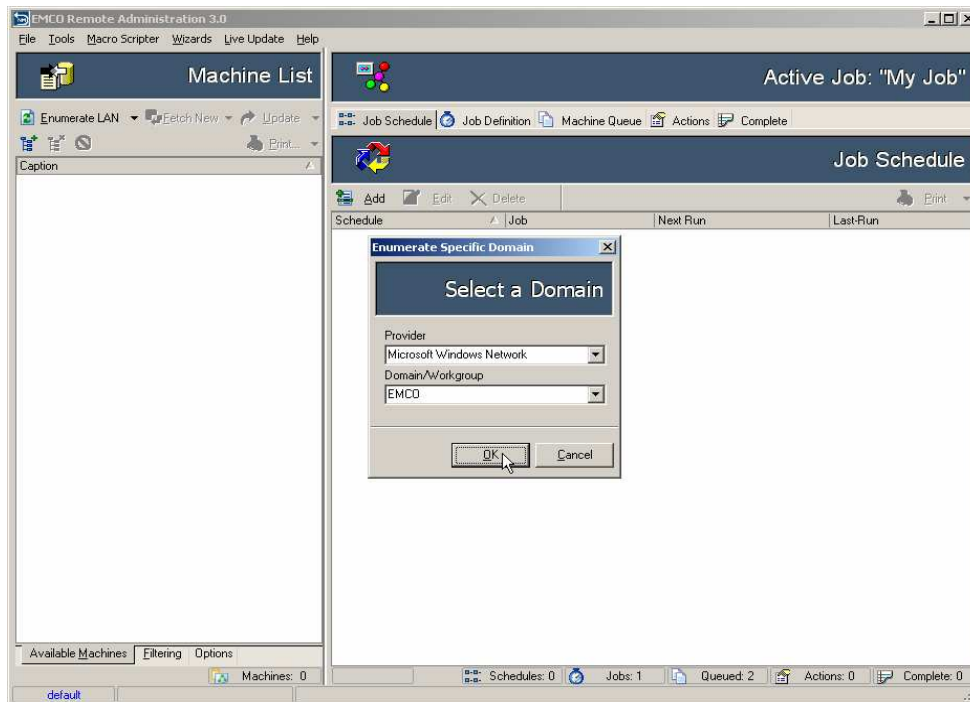
1. Click the down arrow shown on the right of the **Enumerate LAN** button and select **Enumerate LAN via Domain Name**.



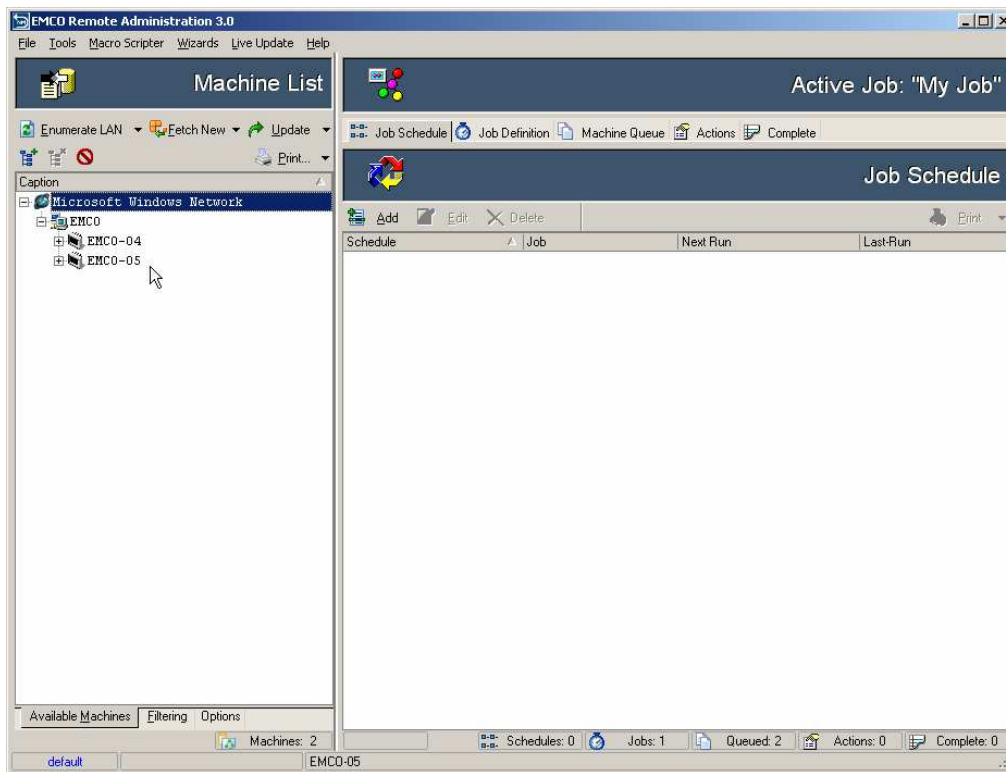
2. A **Select/Enter Domain** dialog box will appear.



3. Type the **Provider** of the Network and the **Domain/Workgroup** in their respective box and click **OK** button.



4. The scanning process will begin.
5. To cancel scanning process, click the **Cancel** button shown at the lower left corner of the main window of the EMCO Remote Administration 3.0.
6. When the scanning process will complete you will see the list of the scanned machine in the Machine tree in **Available Machines** Tab.

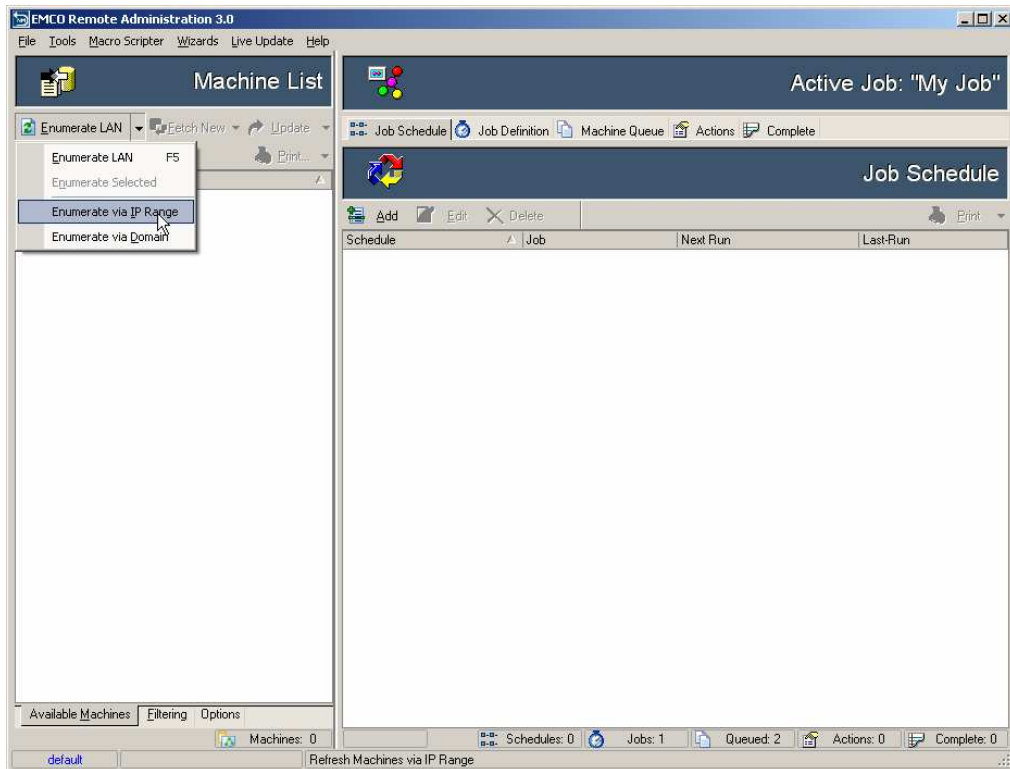


Enumerating LAN via Range of IP addresses

To Enumerate LAN for Computers via IP Range:

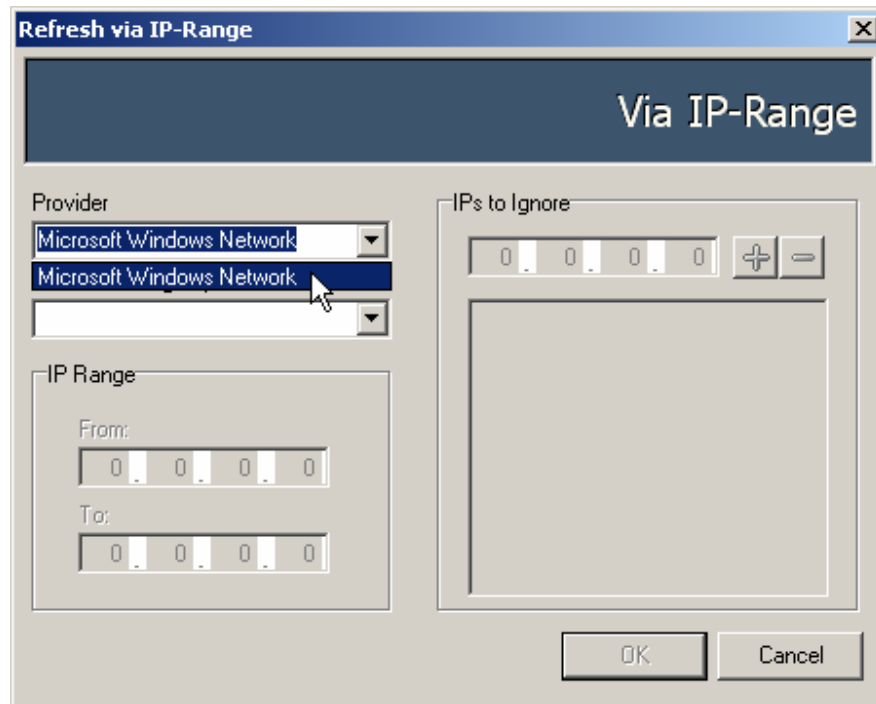
To Enumerate LAN for Computers via IP Range perform the following steps:

1. Click the down arrow shown on the right of the **Enumerate LAN** button and select **Enumerate LAN via IP Range**.

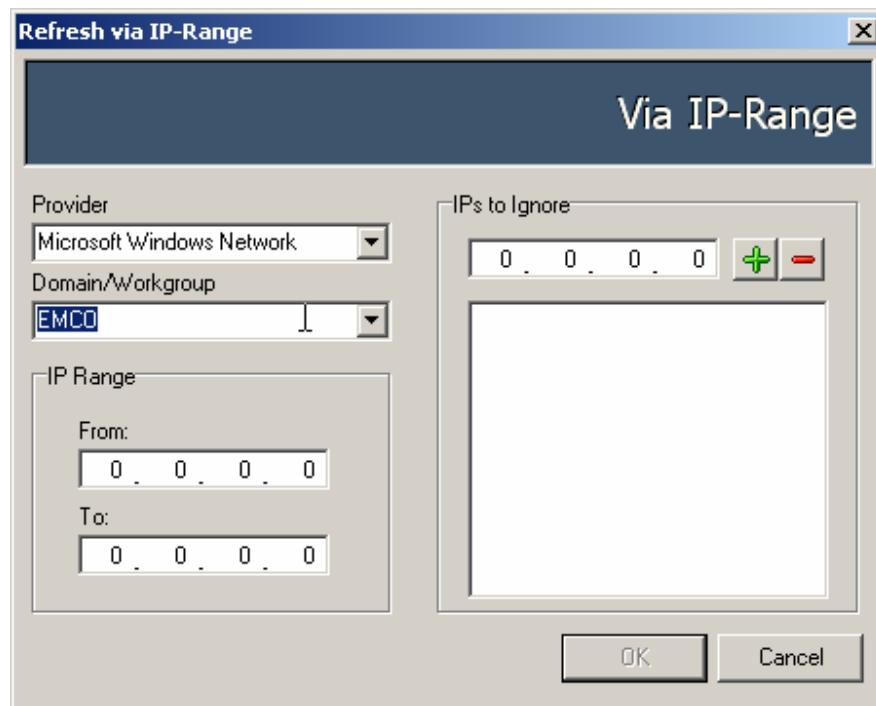


2. A **Refresh Via IP Range** dialog box will appear.

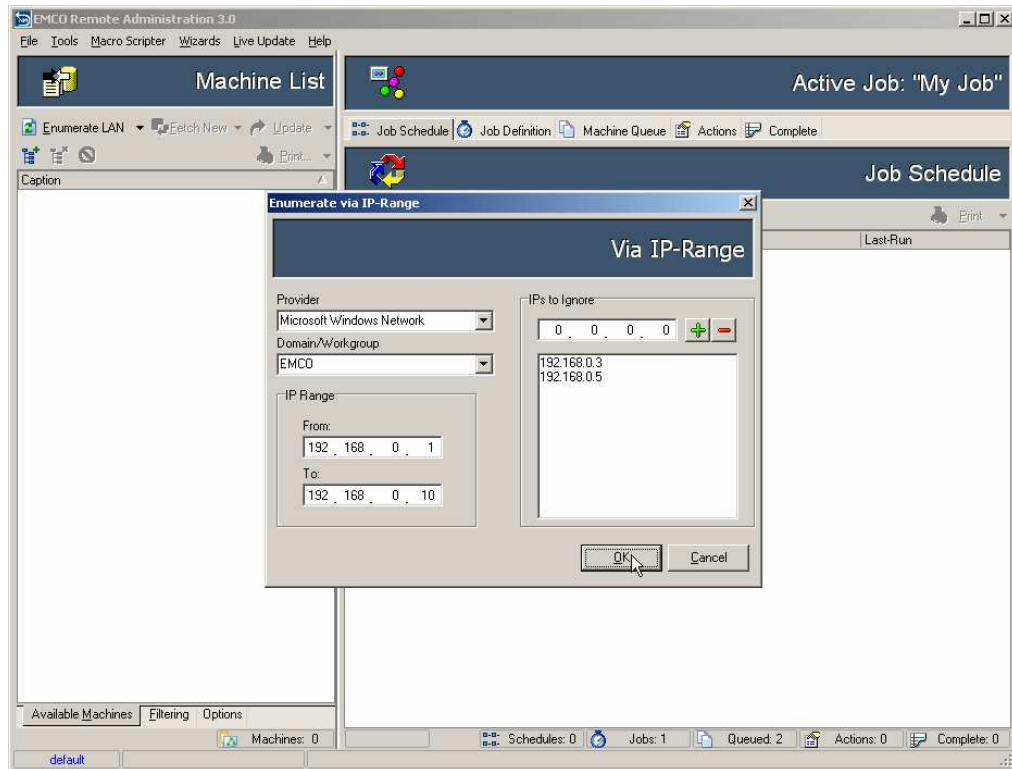
3. Select the **Provider of your Network** from the dropdown list.



4. Select or type the **Domain workgroup** that you want to scan.



5. Type in the range of the starting range of IP addresses in **From** textbox and last IP address in the **To** textbox and click **OK** button.



6. The scanning process will begin.
7. To cancel scanning process, click the **Cancel** button shown at the lower left corner of the main window of the EMCO Remote Administration 3.0.

8. When the scanning process will complete you will see the list of the scanned machine in the Machine tree in **Available Machines** Tab.

