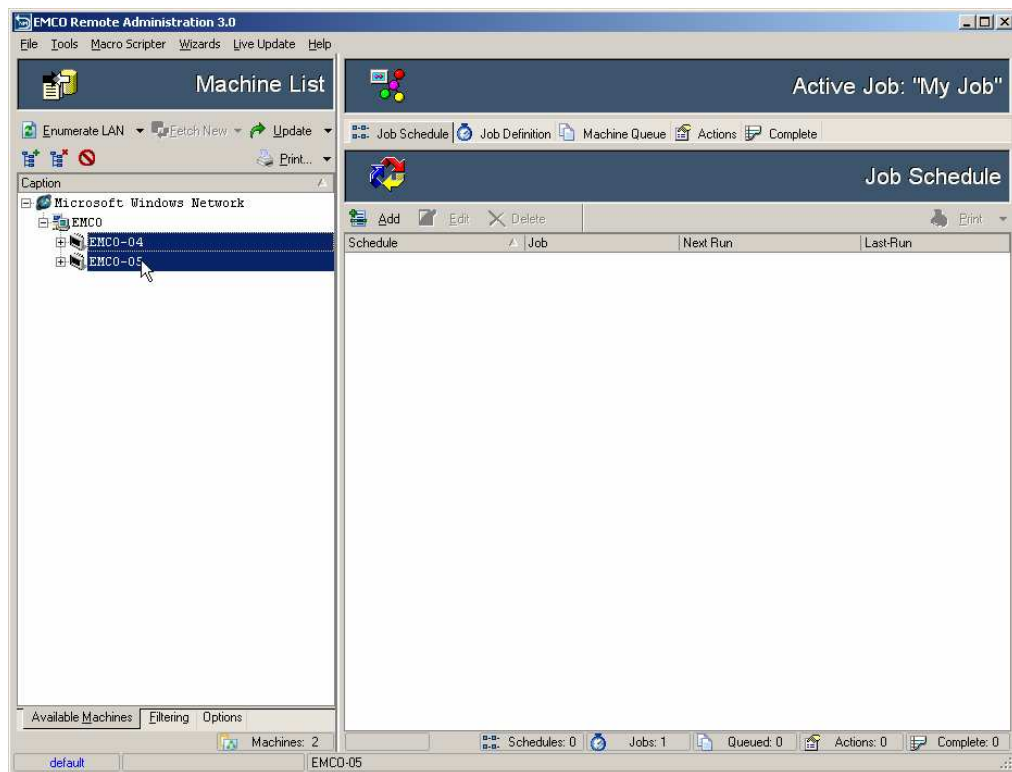


Moving selected machines from Machine Tree to Machine Queue

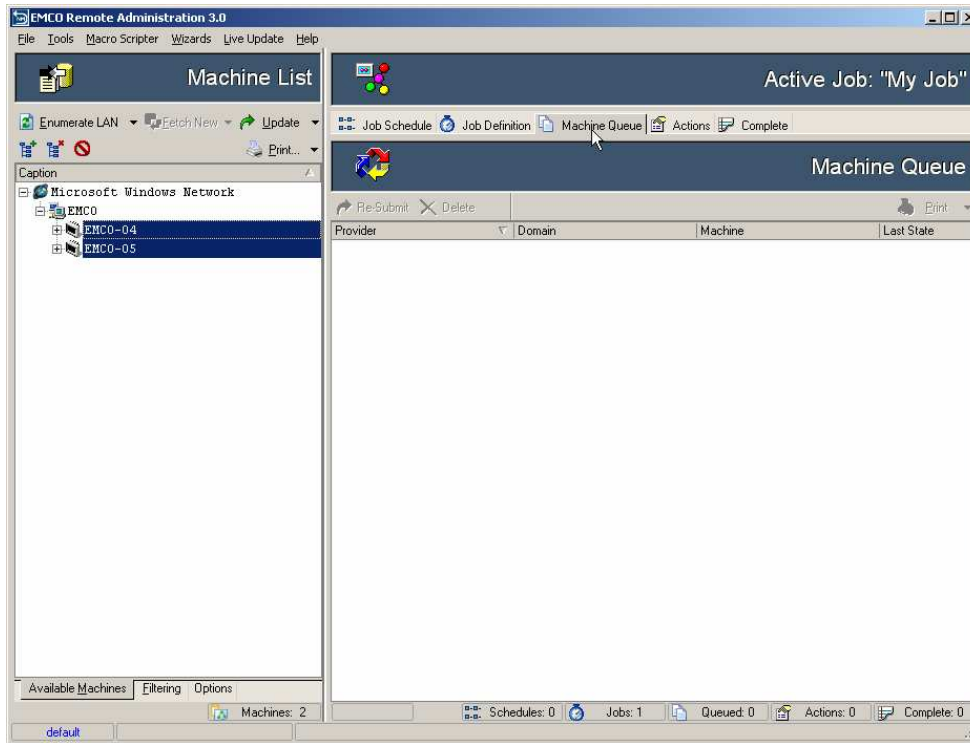
To move selected machines from Machines Tree to Machine Queue:

To move selected machines from Machines Tree to Machine Queue perform the following steps:

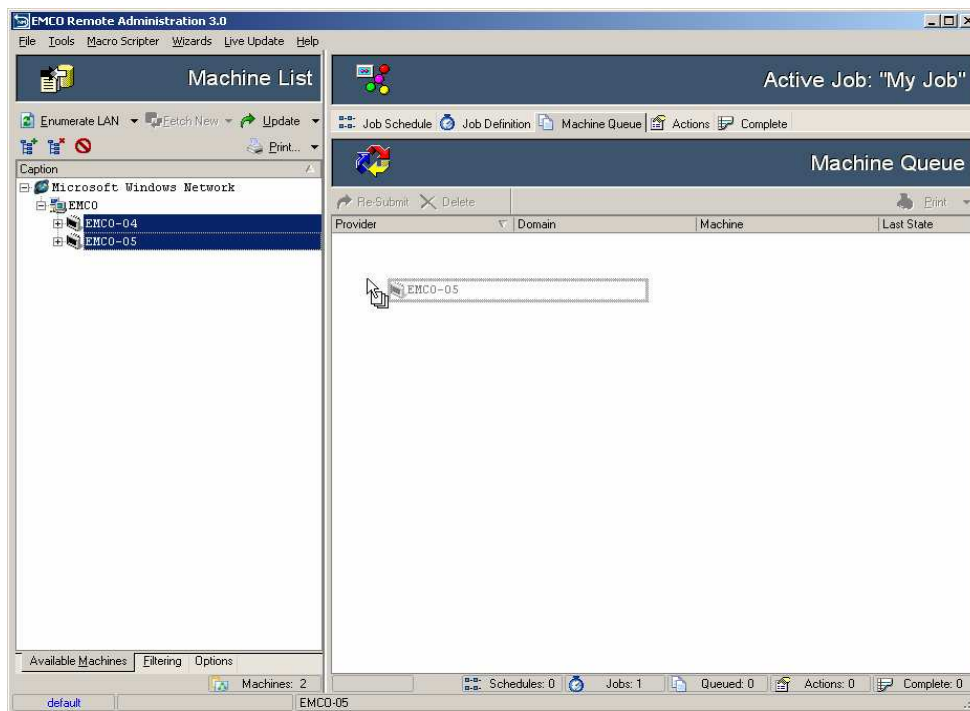
1. Press the **Ctrl** Key and keep it pressed and click the machines that you want to process.



- Switch to **Machines Queue** Tab. Please make sure that you have added a job definition in Job Definition Tab before switching to Machines Queue Tab.



- Click any of the selected machines and drag it to the **Machines Queue** Tab.



4. The selected machines will appear in the **Machines Queue Tab**.

