

Knowledgebase Article

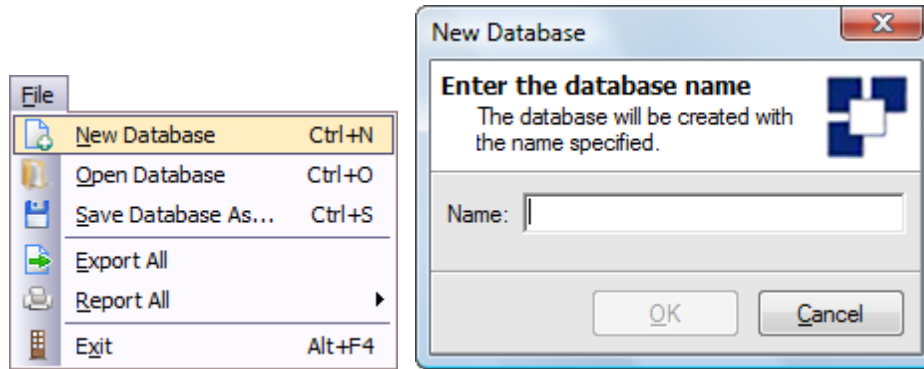
Create a new database and other related features

© Copyright 2001-2009 EMCO Software

Create a new database and other related features

Remote Desktop uses a database called DBISAM which is a local database storage. The program can create as many databases as you need. It is perfect if you need to manage multiple domains but don't want to fix it together.

To create a new database simply click on the File menu and select New Dabat as menu item as the screenshot below shows.



After this you will have this dialog up where you can enter any name you wish to use for the new database. We will write NEW_DATABASE into the edit field and click on the OK button.

Now you can see your new database name at the bottom of the main screen marked blue.

Now you are ready to work with the database created - all the data will be stored there.



You can also open any of your created databases from the File – Open Database menu item. See screenshot below.

