

# Knowledgebase Article


---

## Enumerate functions in Remote Desktop

© Copyright 2001-2009 EMCO Software

## Enumerate functions in Remote Desktop

The Emco Remote Desktop has three built-in auto enumerate LAN process functions that can scan your network for machines.

 The machine tree is the tree to the left of the main Remote Desktop screen.

### Enumerate LAN

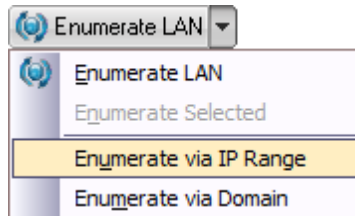
This function is the main enumerate function in the program, and it will scan all available networks within Network Neighborhood and fetch all computers from those networks into the program.

Click on the Enumerate menu button and select the Enumerate LAN menu item:


### Enumerate

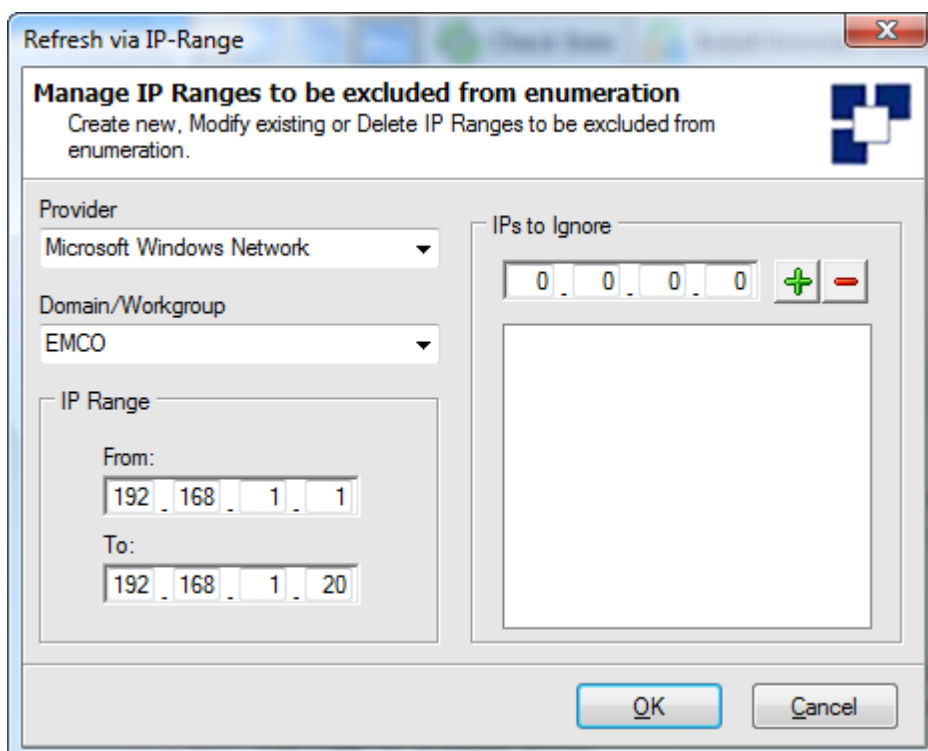


### Enumerate LAN via IP-Range



This function can fetch computer names from a range of IP addresses and can be very useful when adding computers from another range or another Network/WAN.

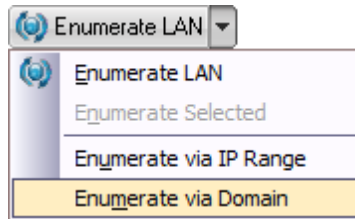
 The program will always add computer names as HostName. It is required from the computer where the Remote Desktop program is run that computer names can be pinged by HostName. Computers can also be added manually as IP addresses using the Add Machine(s) dialog



### How to add computers manually

<http://www.emco.is/whitepaper/remotedesktop/v4/How to add computers manually.pdf>

## Enumerate LAN via Domain Name



This function can fetch computers only from a specific domain name written into the domain field. For the function to successfully scan and fetch the computers, full access to the specific domain from which computers are being fetched is required.

