

# Knowledgebase Article

---

## How to File Transfer in Remote Desktop

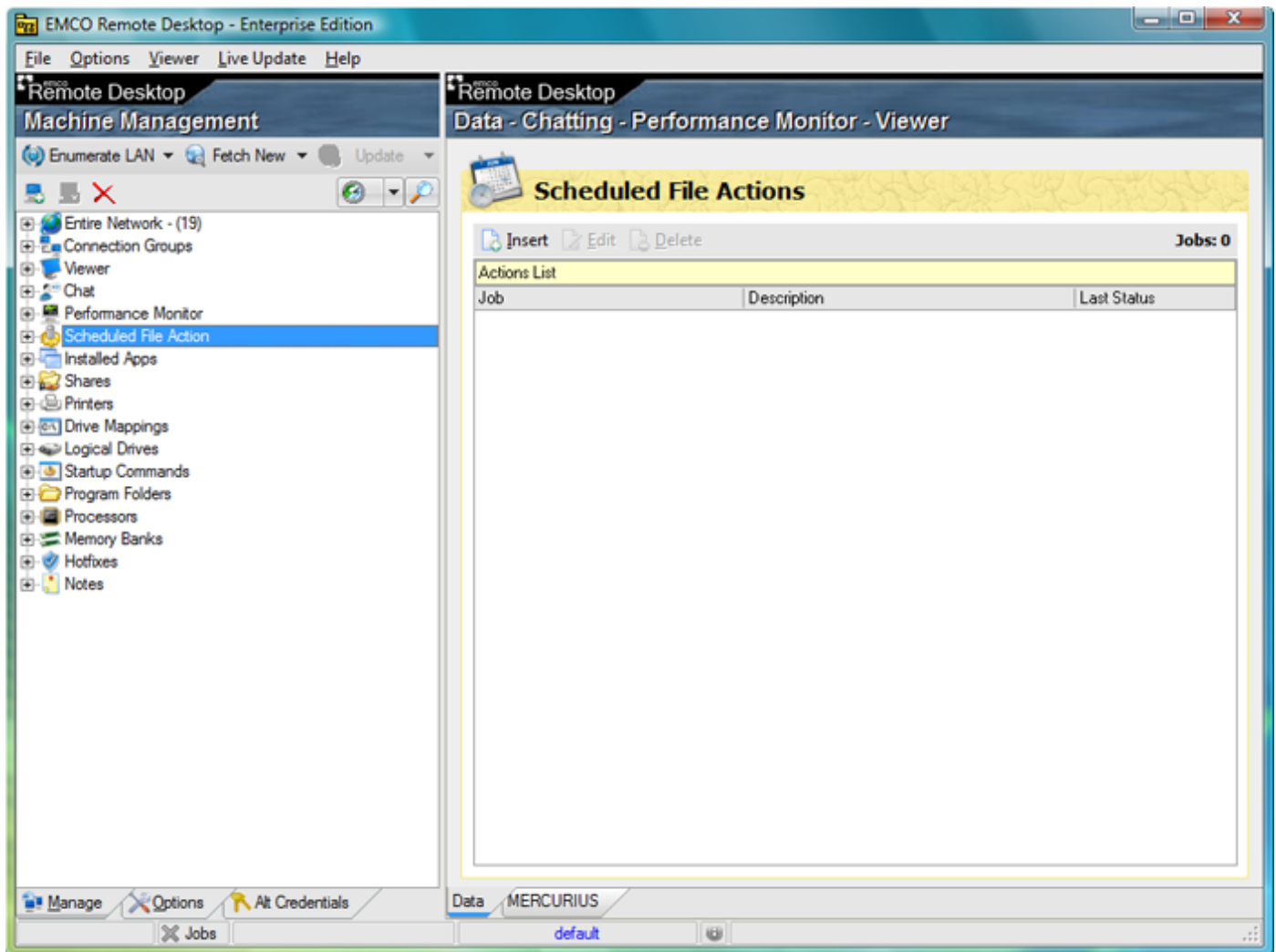
© Copyright 2001-2012 EMCO Software

## How to File Transfer in Remote Desktop

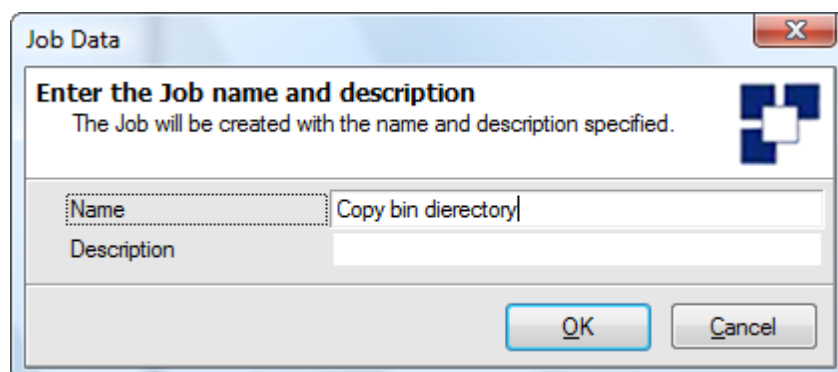
Remote Desktop supports the File Transfer feature. In this document we will guide you the steps needed.

Before you can setup your File Transfer you will need to have some computers available in the program Machine Tree.

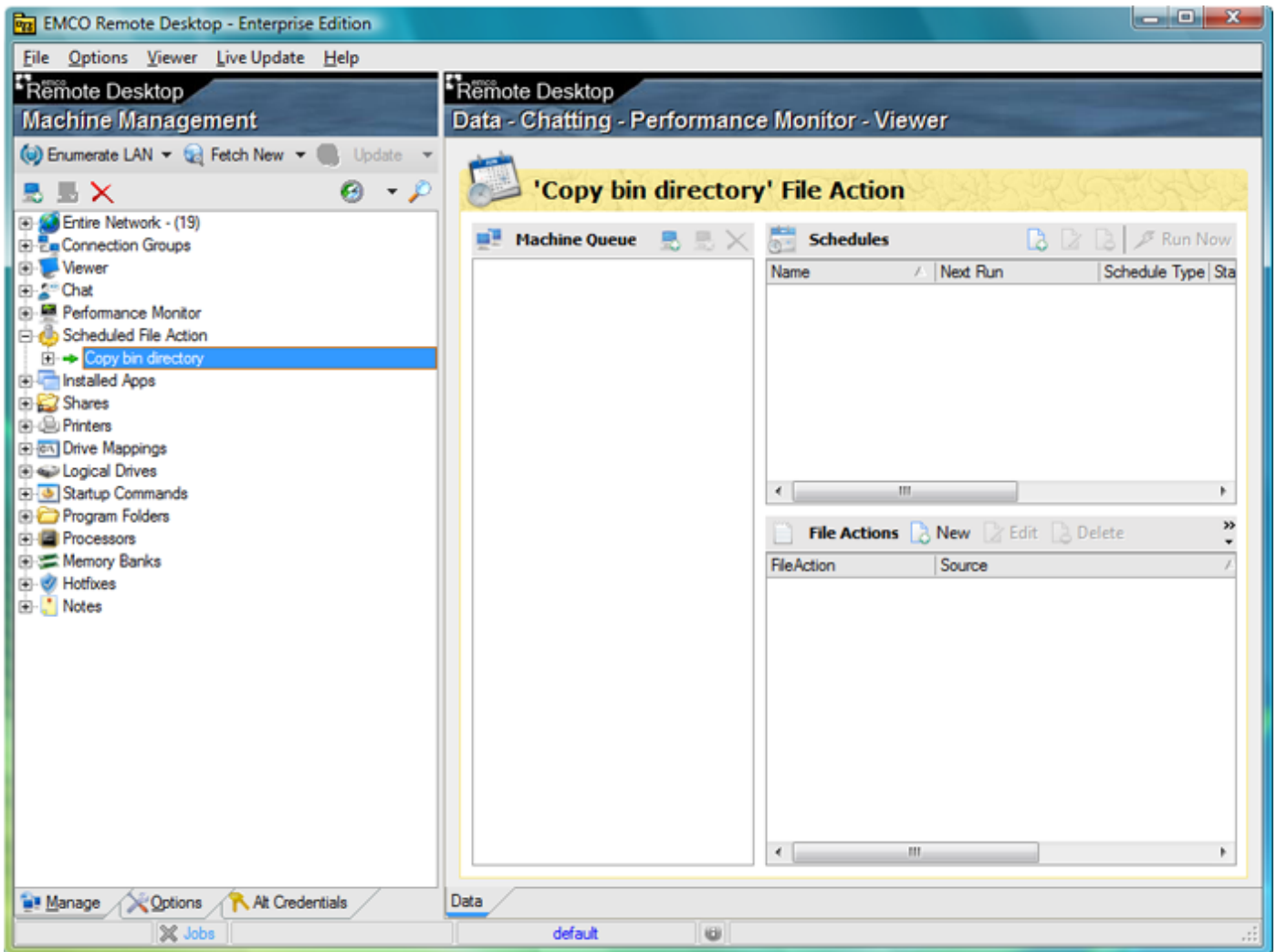
**Machine Tree is always located to the left, Scheduled File Action can be found near the bottom of the tree as you can see from the picture below.**




To setup File Transfer we simply click on the Scheduled File Action tree label in Machine Tree and then next click the New button top of the DATA tab as you can see from the picture below. This will open the Job Data dialog where you can enter your file transfer action name. Click next on OK button.



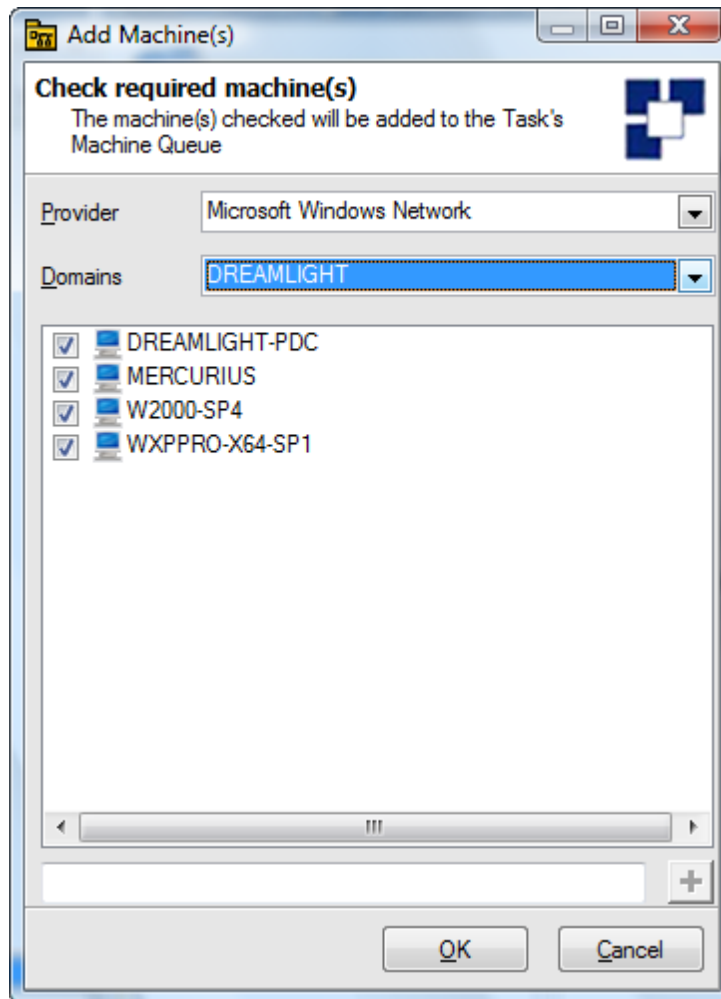
After assigning your file transfer action name, the program will display this screen where you can manage and setup your destination computers, files to copy/move etc...



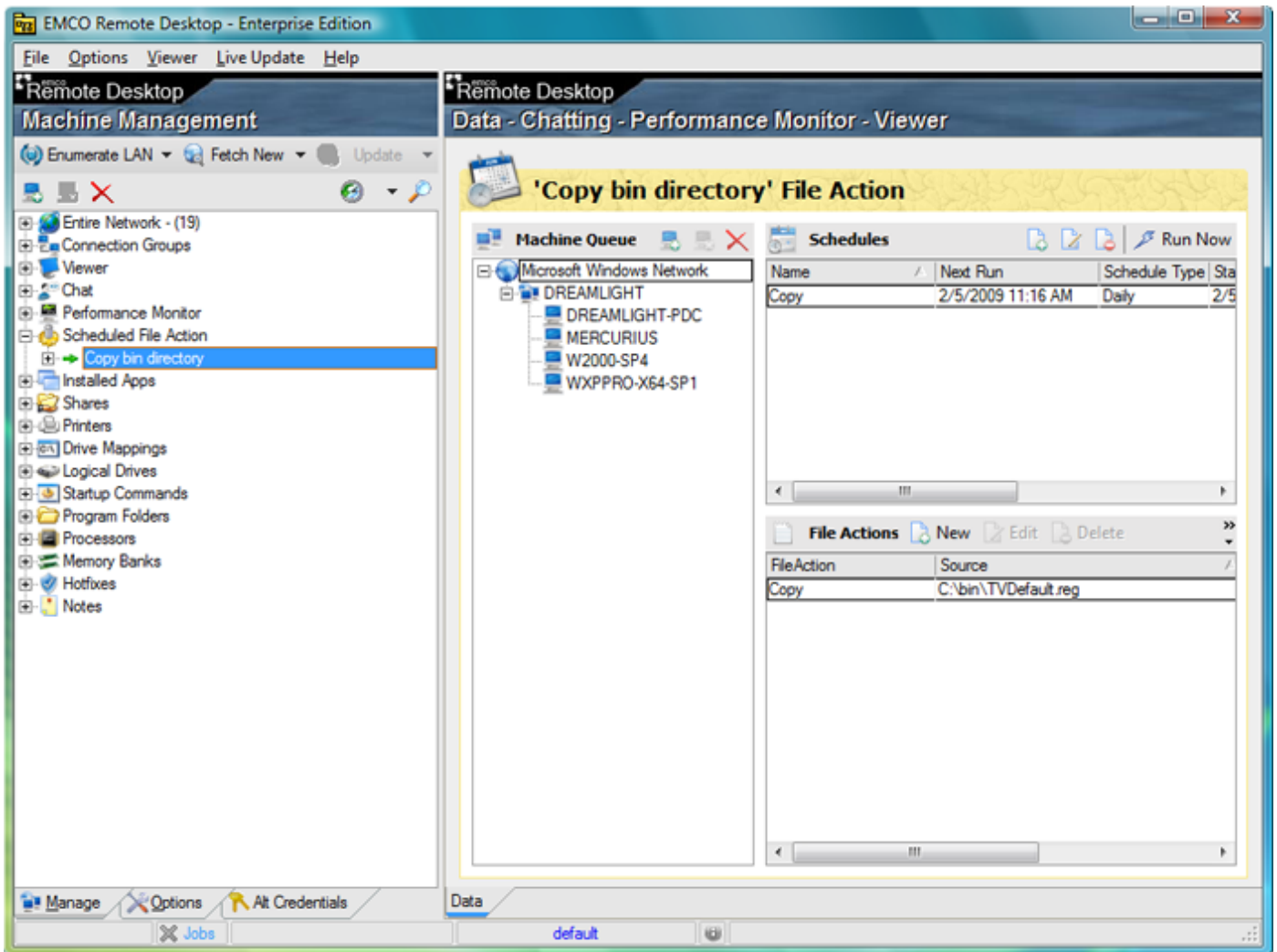
Next we need to add computers to our File Transfer queue, simply click the  button under the DATA tab highlighted below.

Next select "Microsoft Windows Network" from the Provider field, and from the Domain field you will select the domain name your computers are available.

Now you should see your computers available in the Add Machine(s) list. Check those computers you want to add and press OK button.



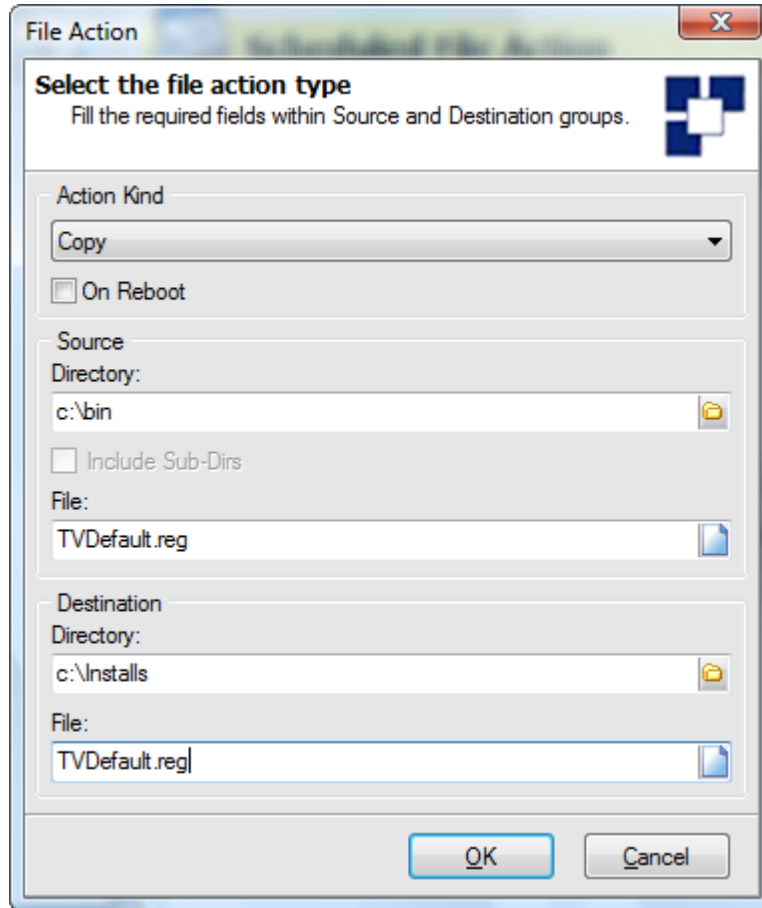
Now you can see your selected computers available in the File Transfer machine queue and you are ready to add your File Transfer action.



To add File Transfer file actions simply click on the  button highlighted from the File Actions group.

From the File Action dialog you can manage and setup your File Transfer criteria. Three Action Kind are available, Copy, Copy with Version Check and Delete. If check the On Reboot option you can control whether your File Action will be performed on next remote machine reboot. This can be very useful when you need to Delete some files that may be in used and are locked.

Our simple File Transfer action.



**Action Kind :** Copy

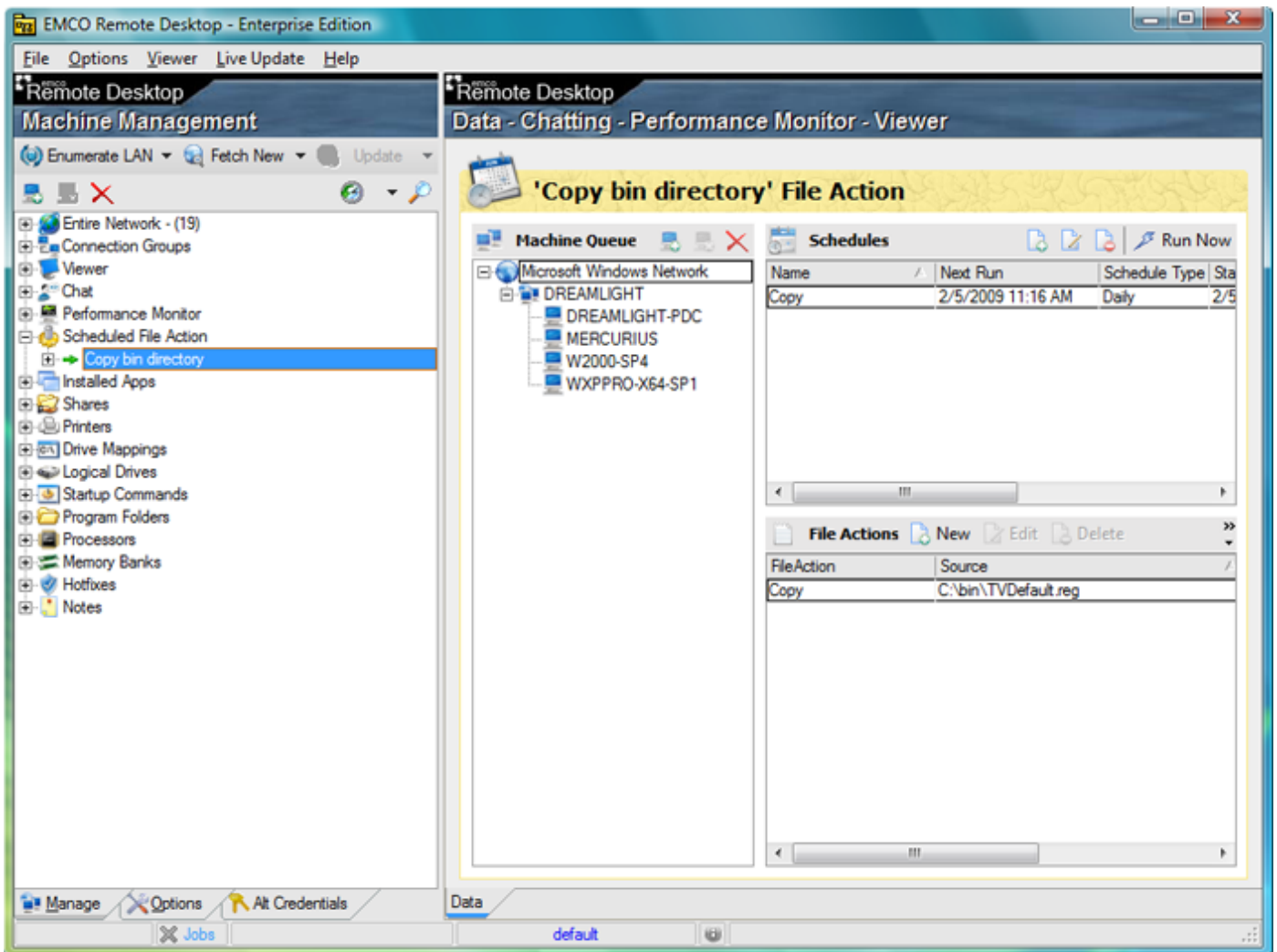
**Source Directory :** C:\bin

**Source File :** TVDefault.reg

**Destination Directory :** C:\bin

**Destination File :** TVDefault.reg

Now you can see your File Transfer action added below and the program is ready to perform your file transfer over to these three added computers.

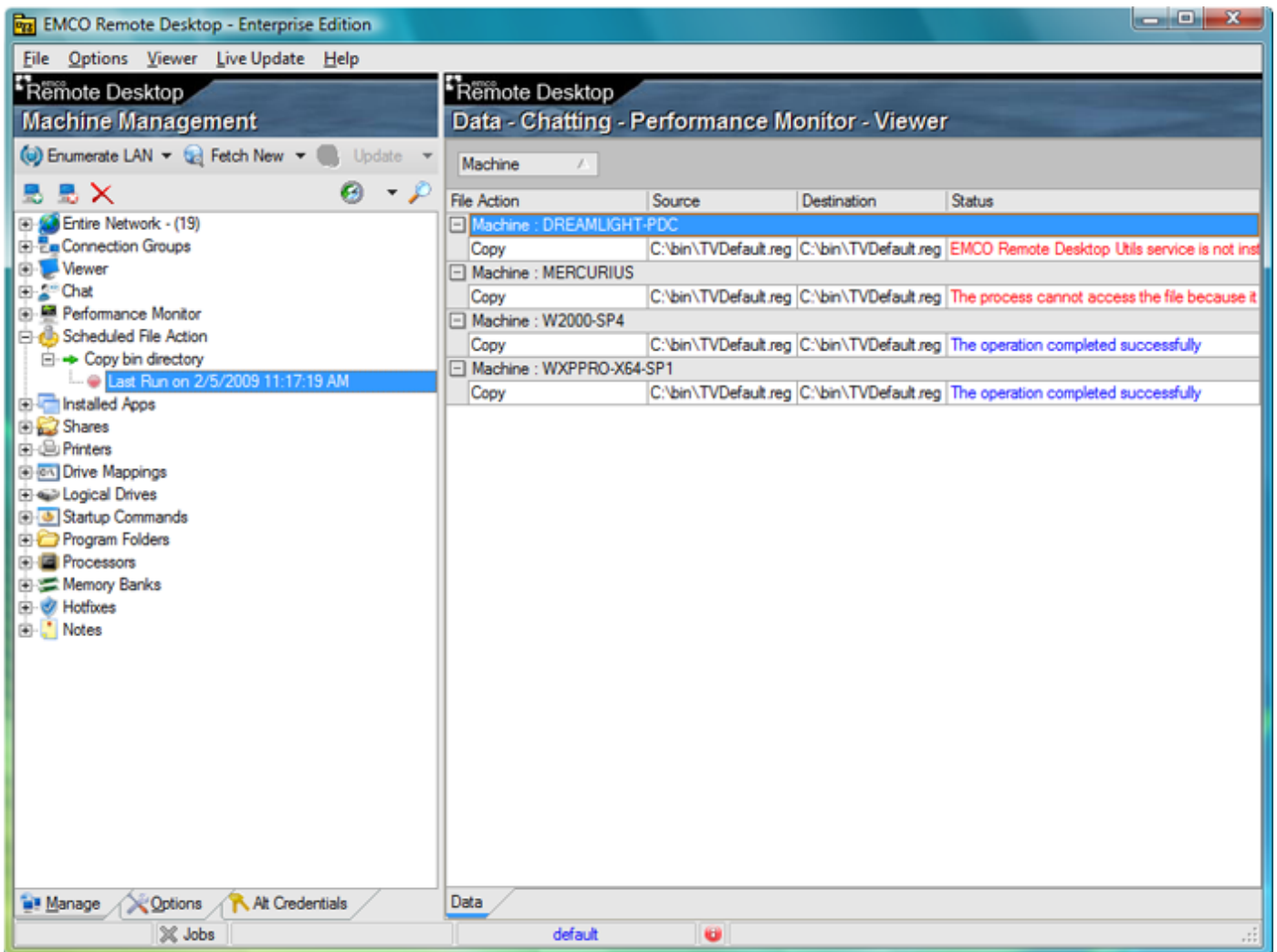


To start File Transfer simply click the **Run Now** button highlighted.

Run Now will immediately start the file transfer process but you have also the option to schedule your File Transfer from the Schedules NEW button.

You can see NetUtilities service is not installed on POWER. This service is required for the File Transfer to work. NetUtilities service can be installed from the "Install\Uninstall Service..." machine tree menu item.

Host name WXPPRO-X64-SP1 has the NetUtilities service installed and everything is working fine there as you can see from the Status display.



### How to deploy the Remote Desktop service

[http://emcosoftware.com/whitepaper/remotedesktop/v4/How to deploy the Remote Desktop service.pdf](http://emcosoftware.com/whitepaper/remotedesktop/v4/How%20to%20deploy%20the%20Remote%20Desktop%20service.pdf)

### More online documents

<http://emcosoftware.com/remote-desktop/tutorials>