

Knowledgebase Article

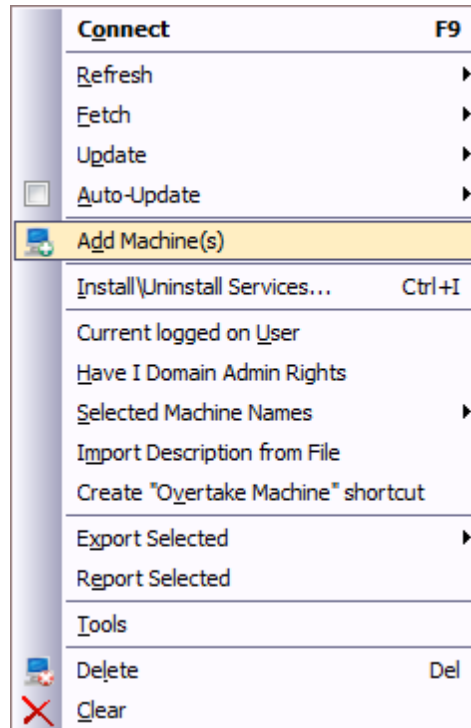
How to add computers manually

© Copyright 2001-2009 EMCO Software

How to add computers manually

In Remote Desktop, you can add computers manually into the machine tree if the program cannot enumerate some computers or you need to add computers another Network/WAN.

Right clicking on the Networking node will display the programs popup menu where you can locate and select the Add Machine(s) menu item as the screenshot below shows.




After clicking on the menu item you will get the Add Machine(s) dialog up where you can manage select DOMAIN name you want the manually added computers to be added to.

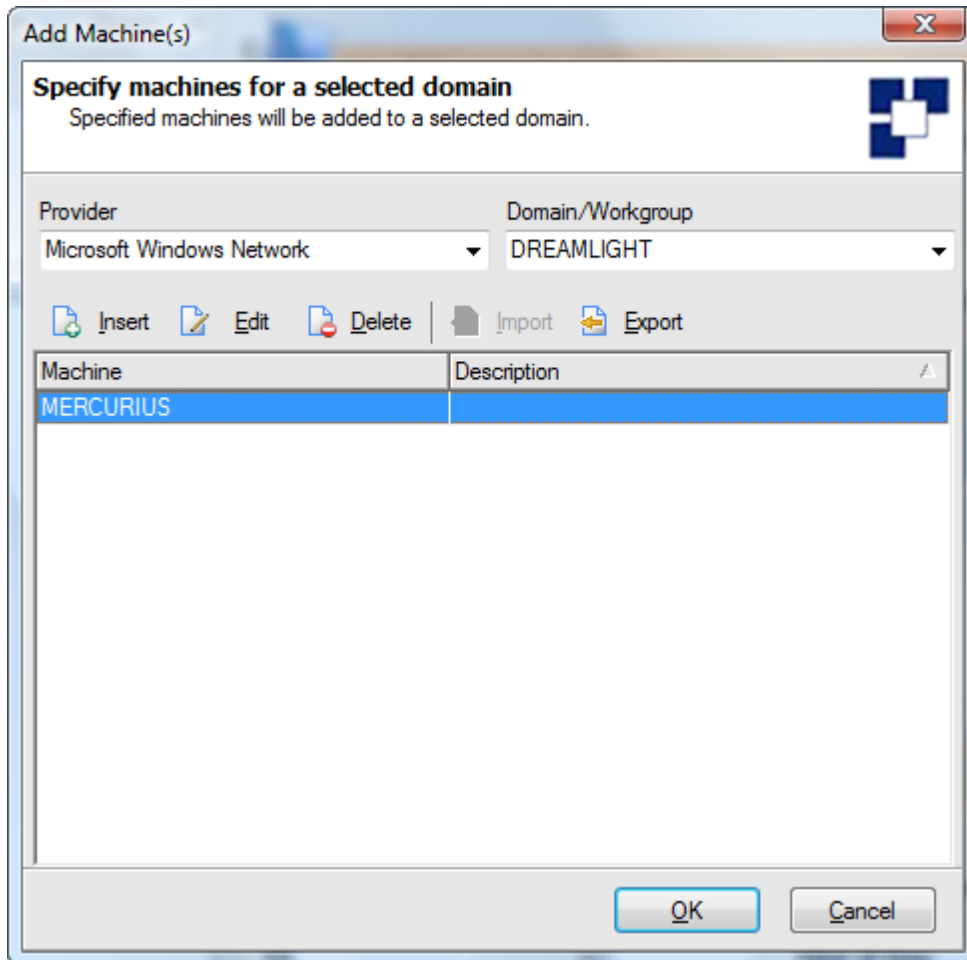


If the Domain/Workgroup field is empty then the OK button is grayed out and you cannot add them, the field is required for the machine tree.

Default steps:

1. Add the Domain name into the Domain/Workgroup field.
2. Click the Insert button to open the Machine name dialog.

 You can add as many computers as you need.



Now we have added two new computers into the machine tree and they are ready to be used in Remote Desktop. See screenshot below.

