

Knowledgebase Article

How to deploy the Remote Desktop service

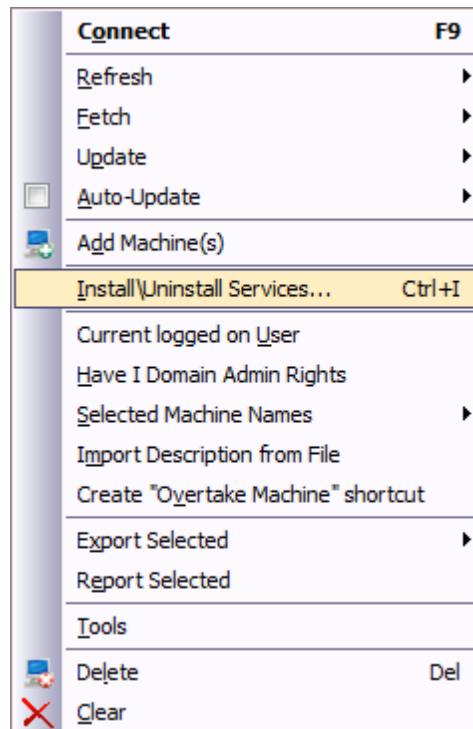
© Copyright 2001-2009 EMCO Software

How to deploy the Remote Desktop service

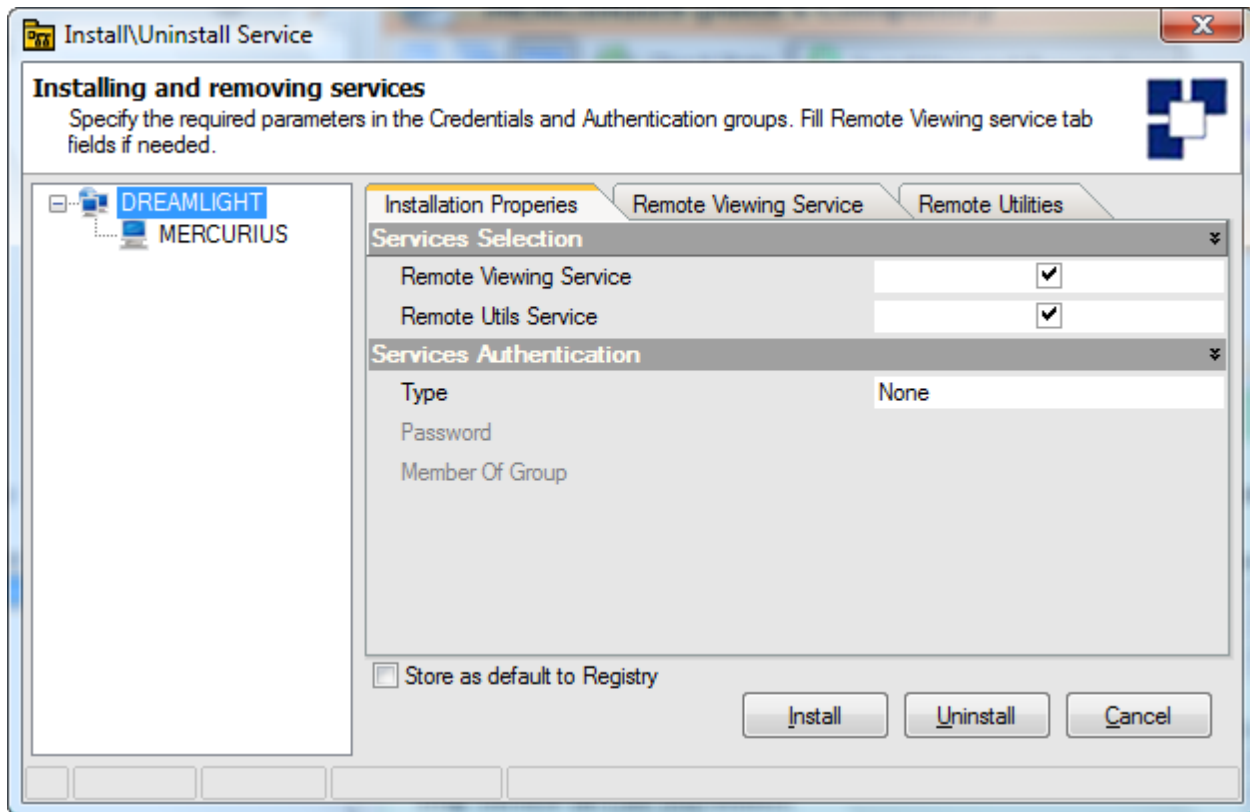
The Emco Remote Desktop program has a built-in installation tool that can be very useful when there is a need to install service programs across multiple computers in one shot rather than in steps.

Right click on any main network tree node or the domain(s) / computer(s), to which the service program will be deployed.

Select the Deploy Remote Desktop Client (Multi Install) from the pop-up menu:



The Remote Service Install dialog will display:

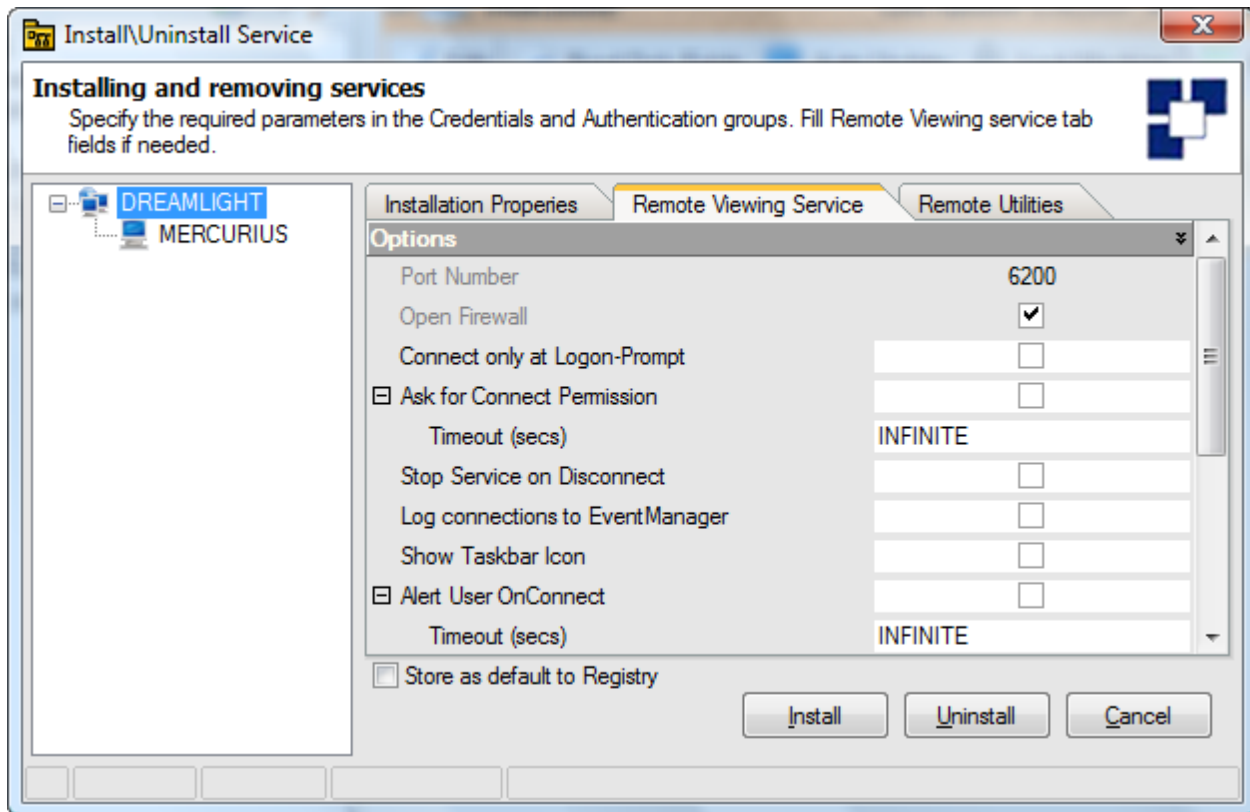


Computers available for service installation will be displayed in the Remote Service Install window.

In the Select the service(s) to install or remove group box, select the Remote Viewing Service checkbox to install the main Remote Desktop service, and select the Remote Utilities checkbox to install the Utilities service for the program.

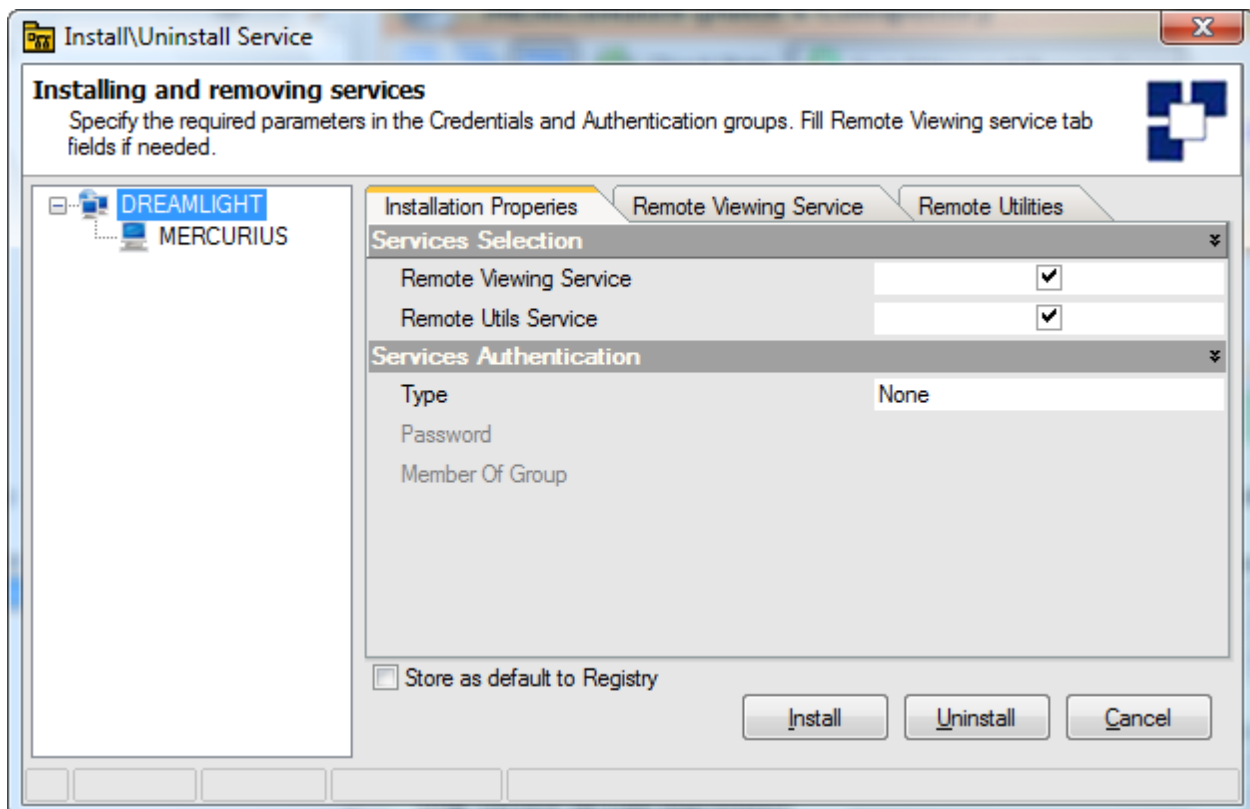
The Utilities service is only used for the Chat and Performance Monitor feature. If neither of these features will be in use, there is no need to install the Utilities service.

You can configure Remote Viewing Service options on Remote Viewing Service tab:



Press Install button. The service program will be deployed to all remote computers listed in the Remote Service Install window.

Select on the Install pushbutton. The service program will deploy to all remote computers listed in the Remote Service Install window:



To uninstall the service program from all computers listed in the Remote Service Install window, select the Uninstall button.