

Knowledgebase Article

How to fetch useful audit informations from computers

© Copyright 2001-2012 EMCO Software

How to fetch useful audit informations from computers

In Remote Desktop you can scan your remote computers for some useful audit informations like OS Version, Service Pack, Installed Applications etc... and in this document we will show you how you can fetch this useful information from your network computers and export/report them to several popular formats.

Make sure we have some computers available in the Machine Tree.

Before we can make the audit scan, we need to have the computers we want to make the scan in the Machine Tree. The program has built-in functions to scan your network for computers. Online documents can be found here.

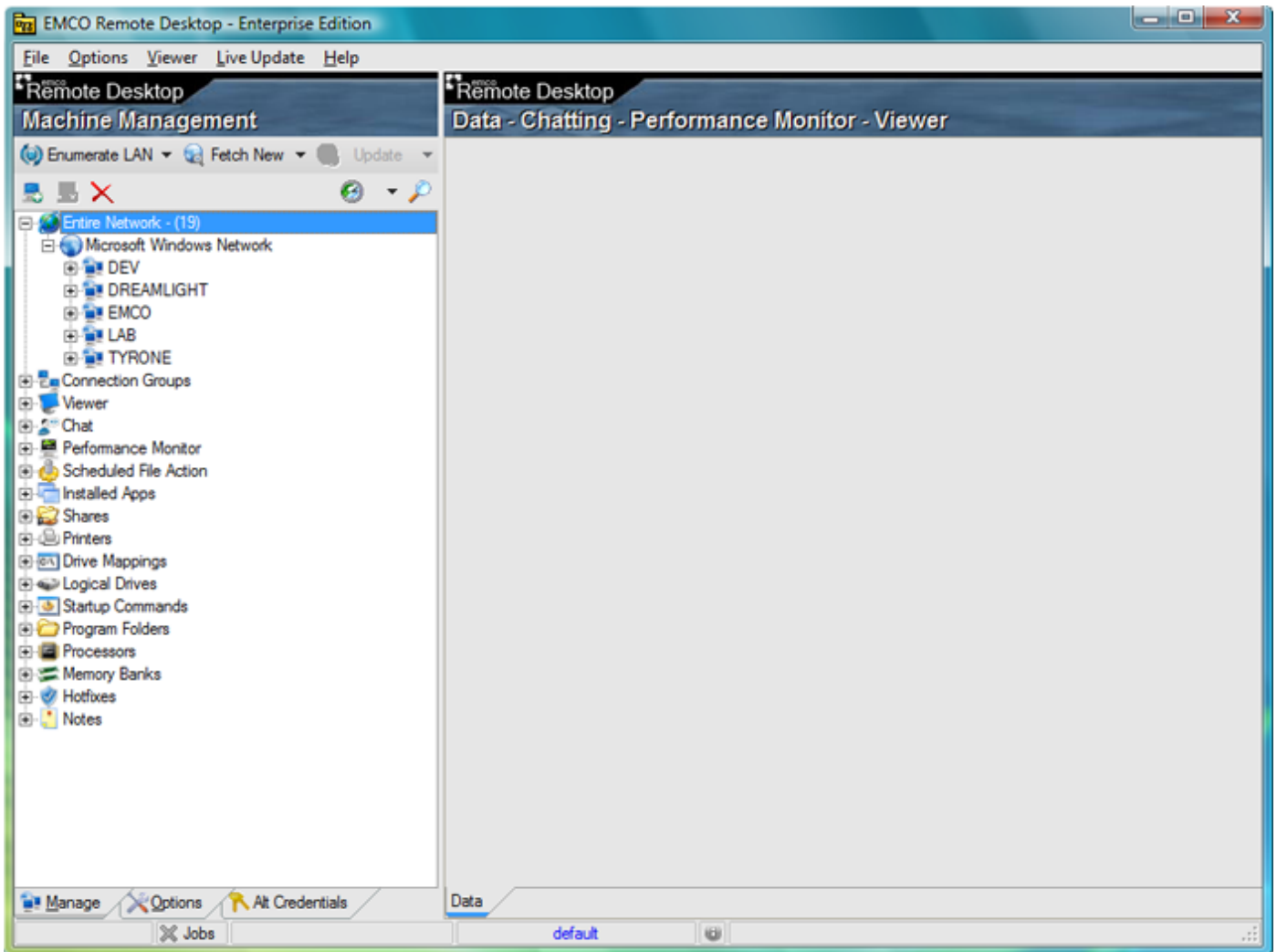
Enumerate functions in Remote Desktop

[http://emcosoftware.com/whitepaper/remotedesktop/v4/Enumerate functions in Remote Desktop.pdf](http://emcosoftware.com/whitepaper/remotedesktop/v4/Enumerate%20functions%20in%20Remote%20Desktop.pdf)

How to add computers manually

[http://emcosoftware.com/whitepaper/remotedesktop/v4/How to add computers manually.pdf](http://emcosoftware.com/whitepaper/remotedesktop/v4/How%20to%20add%20computers%20manually.pdf)

Screenshot from the main screen showing the computers available in the Machine Tree.

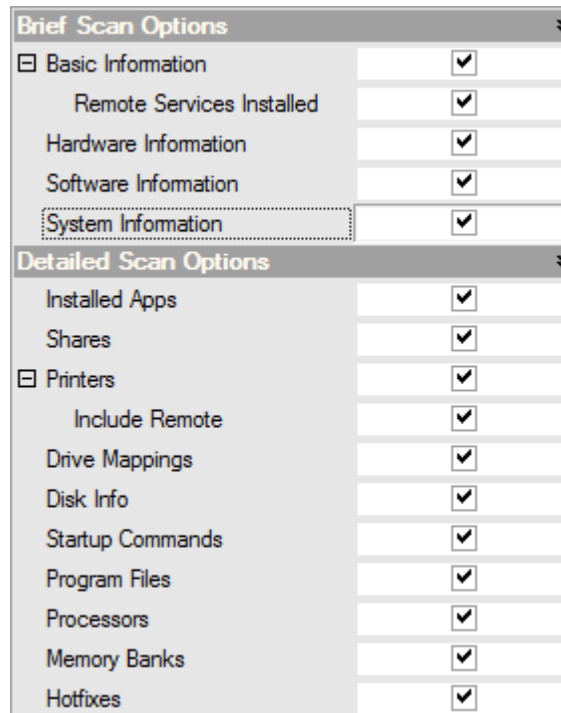


Assign the audit settings before scanning your remote computers.

Before we make the audit scan against the computers available in the Machine Tree we need to make sure we have the settings we want from the Options tab.

Brief Scan Options	
<input type="checkbox"/> Basic Information	<input type="checkbox"/>
Remote Services Installed	<input type="checkbox"/>
Hardware Information	<input type="checkbox"/>
Software Information	<input type="checkbox"/>
System Information	<input type="checkbox"/>
Detailed Scan Options	
Installed Apps	<input type="checkbox"/>
Shares	<input type="checkbox"/>
<input type="checkbox"/> Printers	<input type="checkbox"/>
Include Remote	<input type="checkbox"/>
Drive Mappings	<input type="checkbox"/>
Disk Info	<input type="checkbox"/>
Startup Commands	<input type="checkbox"/>
Program Files	<input type="checkbox"/>
Processors	<input type="checkbox"/>
Memory Banks	<input type="checkbox"/>
Hotfixes	<input type="checkbox"/>

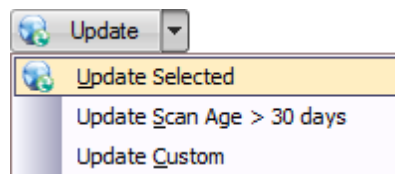
As you can see the program comes by default with no audit settings marked. Now check the options you want to take part in audit scan process. In this demo we will check all audit options available. See picture below for the results.



After this we are ready to make the audit.

Start the audit scanning against Machine Tree computers.

Now we are ready to scan our computers for the audit informations. Select the computers you want to get this data in Machine Tree. See picture below.



As you can see we have five computers available in the Machine Tree, but only four of them are selected. Right click the selection with our mouse and select Update – Update Selected menu item from the pop-up menu. This will start the audit scan process. See picture below.

Processing Machine MERCURIUS fetchinh extra informations...

You can always see the audit scanning status from the main statusbar located on the main screen bottom.

The screenshot displays the EMCO Remote Desktop interface. On the left, the 'Machine Management' pane shows a network tree with 'MERCURIUS' selected. The main window displays the 'Data - Chatting - Performance Monitor - Viewer' for the selected machine.

MERCURIUS Last Update: 2/5/2009 Scan Date: 2/5/2009 10:46:03 AM

Machine: MERCURIUS IP-Address: 192.168.1.10
 Domain\Workgroup: DREAMLIGHT MAC Address: 00-18-F3-7F-1C-ID
 Description: Alex's Computer
 Viewing Svc Installed: Utilities Svc Installed:

Hardware Information

Software Information

Operating System		Other	
OS Name:	Windows Vista	Product ID:	
OS Type:	Workstation		
Service Pack:	Service Pack 1		
Build Number:	6001		
Install Date:	2008-08-07		

System Information

Shares		Other	
ADMIN\$	C:\Windows	BIOS Serial Number:	SYS-1234567890
C\$	C:\	Current Users:	Alex
D\$	D:\	Time of Day:	2009-02-05 10:46:03
IPC\$			
Public	C:\Users\Public		

At the bottom of the window, the status bar shows 'Data' and 'default'.

Now the audit scan process is complete and you can see the information gathered. The picture below shows results for Installed Applications.

The screenshot displays the EMCO Remote Desktop interface. The left pane shows a tree view of network resources, with 'DREAMLIGHT' selected under 'Installed Apps'. The right pane, titled 'Data - Chatting - Performance Monitor - Viewer', shows a table of installed applications for the machine 'DREAMLIGHT-PDC'.

Machine	Display Name	V...	Install L...	Uninstall String	Ti...
DREAMLIGHT-PDC	Total Commander (Remove or Repair)			c:\totalcmd\totalinst.exe	2/5/2
MERCURIUS	Adobe AIR	1.0.49	D:\	C:\Program Files (x86)\	2/5/2
MERCURIUS	Acrobat.com	1.1.37	C:\Program Fil	C:\Program Files (x86)\	2/5/2
MERCURIUS	EMCO MSI Package Builder Enterprise			"C:\Program Files (x86)"	2/5/2
MERCURIUS	EMCO MSI Package Builder Professiona			"C:\Program Files (x86)"	2/5/2
MERCURIUS	EMCO Network Inventory Enterprise			"C:\Program Files (x86)"	2/5/2
MERCURIUS	EMCO Remote Administration Profession			"C:\Program Files (x86)"	2/5/2
MERCURIUS	EMCO Remote Desktop Professional			"C:\Program Files (x86)"	2/5/2
MERCURIUS	EMCO Remote Installer Professional			"C:\Program Files (x86)"	2/5/2
MERCURIUS	EMCO Remote Shutdown Professional			"C:\Program Files (x86)"	2/5/2
MERCURIUS	LiveUpdate 3.2 (Symantec Corporation)	3.2.0.f	"C:\Program F	"C:\Program Files (x86)"	2/5/2
MERCURIUS	Adobe AIR	1.0.8.4		MsiExec.exe /I{002036	2/5/2
MERCURIUS	EMCO Remote Screenshot 2.x			C:\Program Fil "C:\Program Files (x86)"	2/5/2
MERCURIUS	Acrobat.com	0.0.0		MsiExec.exe /I{77DCD	2/5/2
MERCURIUS	Adobe Reader 9	9.0.0	C:\Program Fil	MsiExec.exe /I{AC76B}	2/5/2
MERCURIUS	Hotfix for Microsoft .NET Framework 3.5 1			C:\Windows\SysWOW	2/5/2
MERCURIUS	VMware Remote Console Plug-in	2.5.0.1		MsiExec.exe /X{D2F28	2/5/2



If you need to see all the Installed Applications for a specific domain select it in the tree. The picture below shows the result Installed Apps.

The Remote Desktop program has another powerfull feature for all audit information gathered from your computers. That is to export / report your results to many popular formats.

Please follow the next step on how to Export / Report your audit results.

Export / Report your audit results.

To export / report your audit results you simply click the File – Export All or File – Report All menu items. "ALL" means all available computers. If there is a need to only export / report selected computers you can do it from the Machine Tree popup menu.

Just select those computers you want via your left mouse button while holding down the CTRL key on your keyboard and then next right click on them via your right mouse button. See picture below of it's result.

