

# Knowledgebase Article

---

## How to use the Performance Monitor

© Copyright 2001-2012 EMCO Software

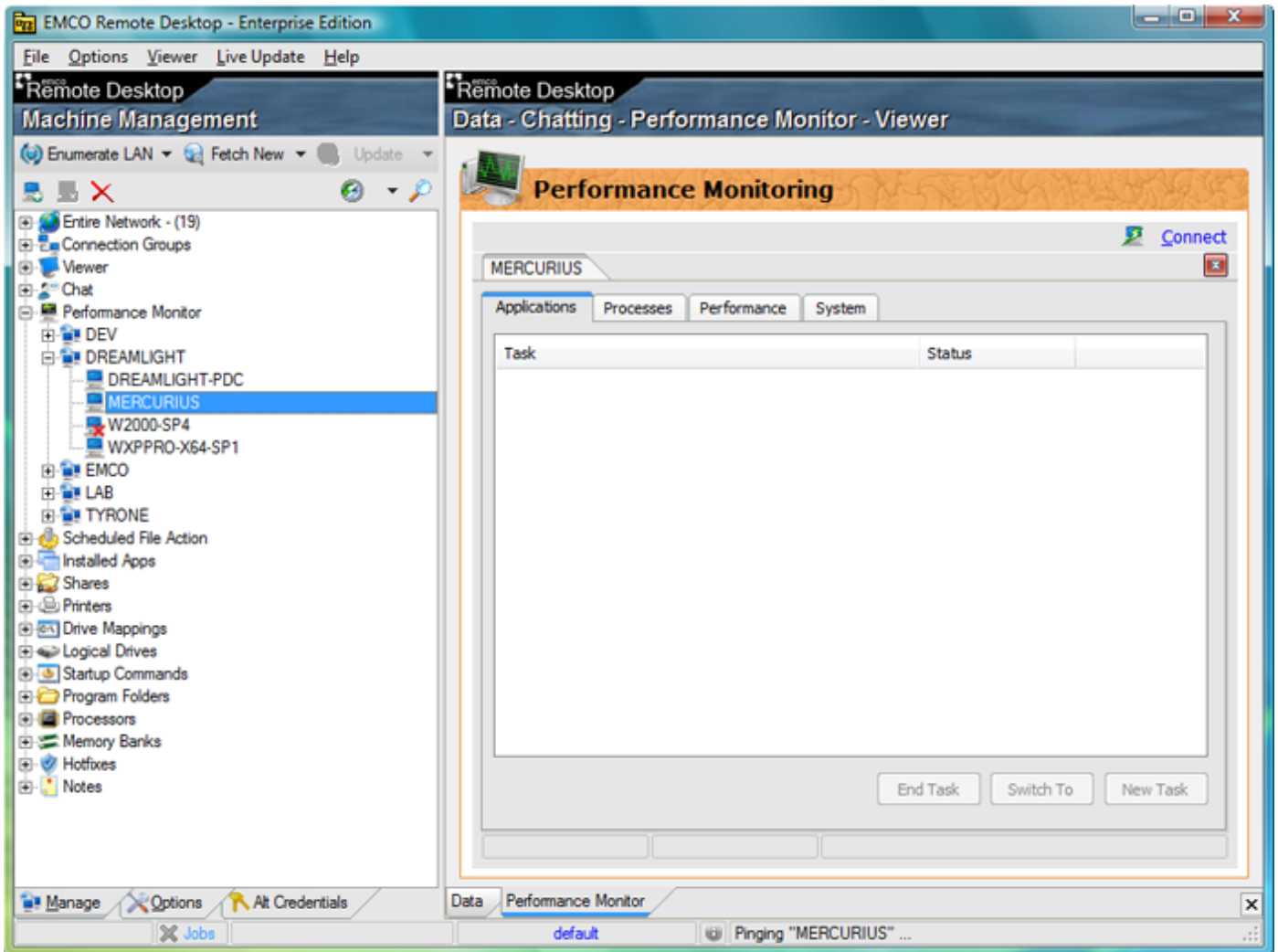
## How to use the Performance Monitor

EMCO Remote Desktop has a built-in Performance Monitor tool, similar to the Windows Task Manager. The Performance Monitor's main feature is that it can connect to any remote computer in the machine tree.



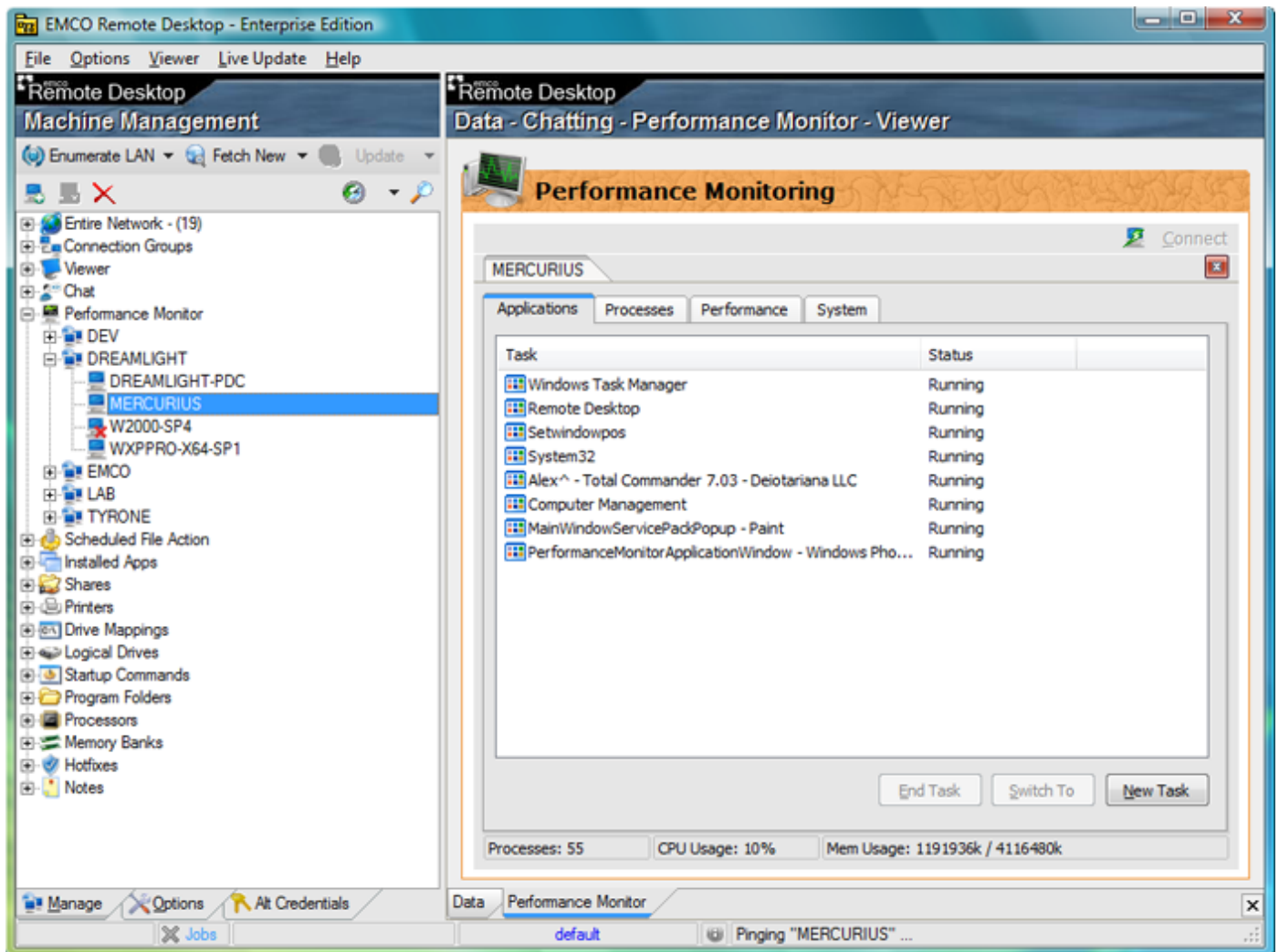
This feature can be very useful when there is a need to manage processes on remote computers within the network etc..

To access the Performance Monitor on remote client, select the Performance Monitor label from the machine tree as shown on the screen shot below:



Press Connect button to establish a connection to your selected computer.

## Applications tab



Select the Applications tab to open the Applications view. The Applications view lists the tasks that are currently open on the selected remote computer, along with the status of the listed tasks.

## Processes tab

The screenshot shows the EMCO Remote Desktop interface. On the left is the Machine Management tree with 'MERCURIUS' selected. The main window displays the Performance Monitoring tool for 'MERCURIUS'. The 'Processes' tab is active, showing the following data:

Process	PID	CPU	CPU Time	Mem Usage
System Idle Process	0	82	01:38:33	24 K
System	4	00	00:00:22	2896 K
smss.exe	424	00	00:00:00	984 K
csrss.exe	492	00	00:00:00	6268 K
wininit.exe	528	00	00:00:00	4980 K
csrss.exe	548	00	00:00:05	8560 K
services.exe	584	00	00:00:03	10208 K
lsass.exe	596	00	00:00:13	4692 K
lsm.exe	604	00	00:00:00	6532 K
winlogon.exe	680	00	00:00:00	7420 K
svchost.exe	808	00	00:00:01	7288 K
svchost.exe	868	00	00:00:00	9904 K
svchost.exe	904	00	00:00:24	42336 K
svchost.exe	1012	00	00:00:01	15948 K
svchost.exe	292	00	00:00:07	48616 K
svchost.exe	360	00	00:00:02	36140 K

Summary statistics at the bottom of the Performance Monitor window:

- Processes: 55
- CPU Usage: 10%
- Mem Usage: 1187840k / 4116480k

Select the Processes tab to open the Processes view. The Processes view lists the processes that are currently running on the selected remote computer, along with details related to those processes.

## Performance tab

The screenshot shows the EMCO Remote Desktop - Enterprise Edition interface. On the left, the 'Machine Management' pane shows a tree view of network resources, with 'MERCURIUS' selected under the 'DREAMLIGHT' group. The main window displays the 'Performance Monitoring' view for 'MERCURIUS'. The 'Performance' tab is selected, showing the following data:

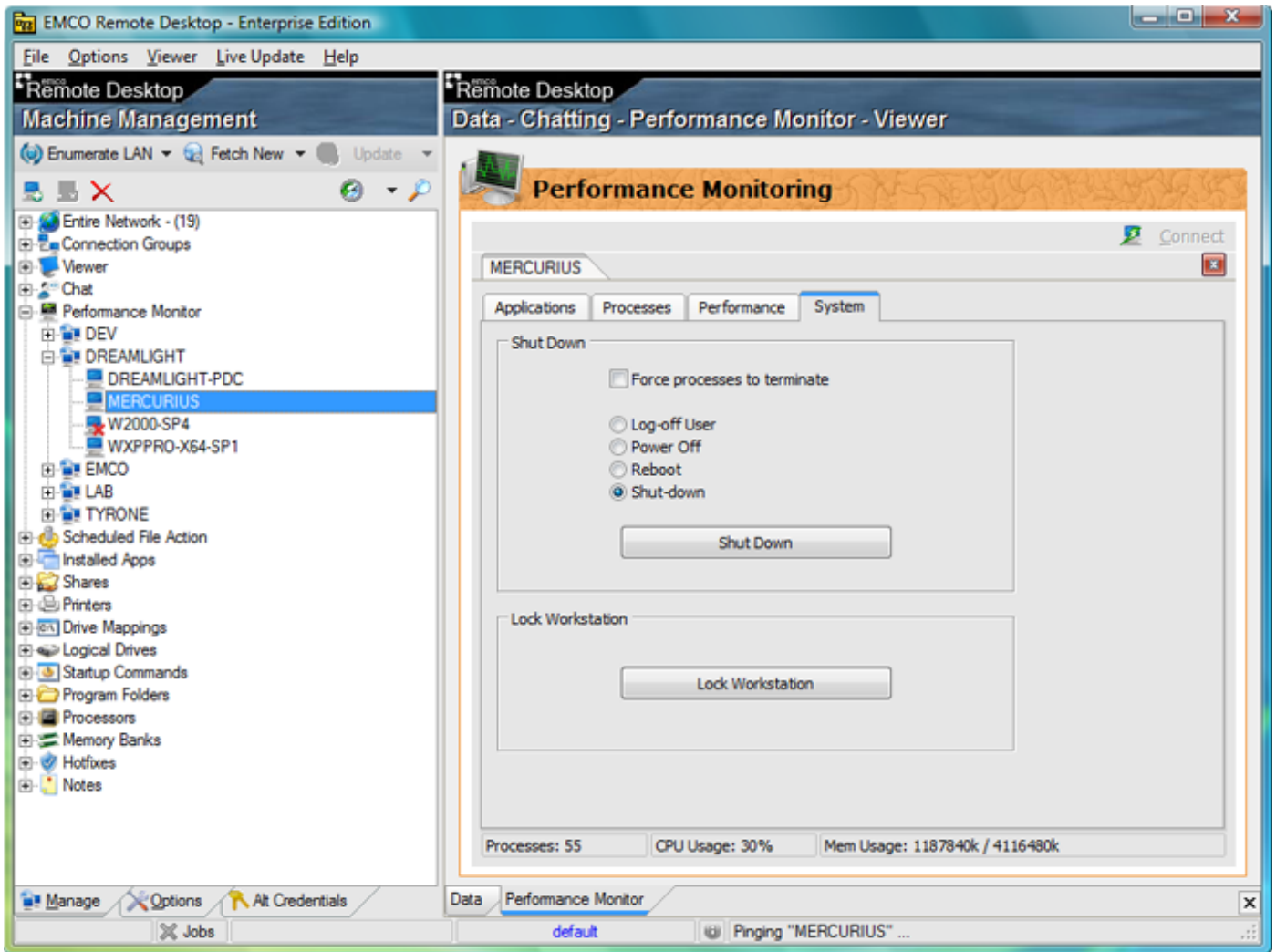
Totals		Physical Memory (K)	
Handles	16064	Total	2084864
Threads	664	Available	1007616
Processes	55	System Cache	737280
Commit Charge (K)		Kernel Memory (K)	
Total	1187840	Total	167936
Limit	4116480	Paged	135168
Peak	1224704	Nonpaged	32768

Summary statistics at the bottom of the Performance view:

- Processes: 55
- CPU Usage: 20%
- Mem Usage: 1187840k / 4116480k

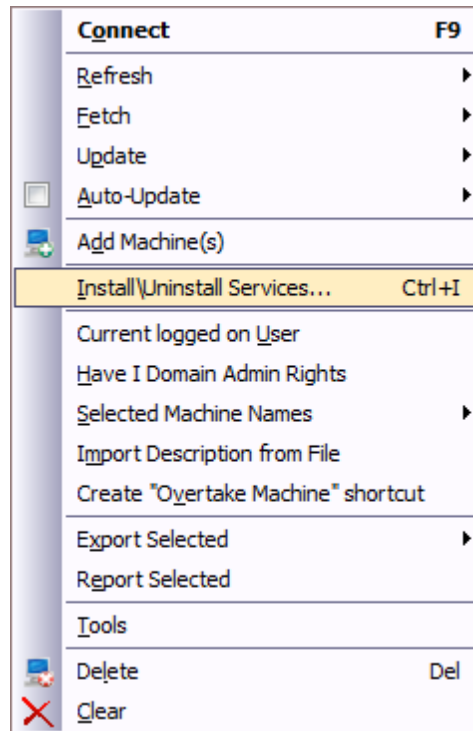
Select the Performance tab to open the Performance view. The Performance view provides the performance information of the selected remote computer.

## System tab

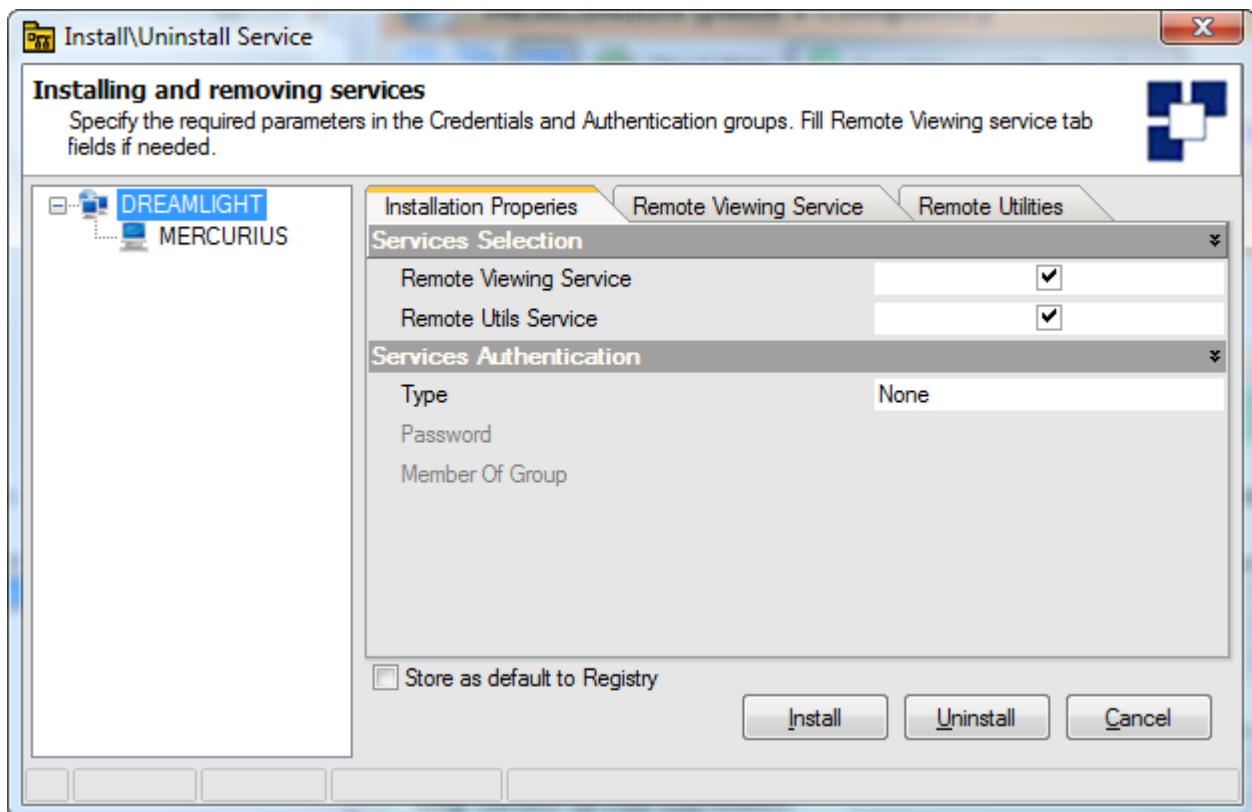


Select the System tab to open the System view. The System view includes two group boxes: the Shut Down group box and the Lock Workstation group box. The Shut Down group box contains tools that can be used to terminate processes, log off the current remote user, reboot, or shut down the selected remote computer. The Lock Workstation group box can be used to lock the selected remote computer.

Before using either the Performance Monitor or the Chat in Remote Desktop, the Remote Utilities service to the remote computer must be installed. This can be done from the Remote Service Install dialog box. To access the Remote Service Install, right click on the name of any computer in the Domain tree node or any Domain for multiple service installation. Select Deploy Remote Utility Desktop Client from the pop-up menu.



The Remote Service Install dialog appears:



Select the Remote Utilities check box and click on the Install button to deploy the service file to the computer(s).