

Knowledgebase Article

Manually Install Client on Computers

© Copyright 2001-2009 EMCO Software

Manually Install Client on Computers

EMCO Remote Desktop provides two services that can be installed on remote machines: one for viewing remote machines, and one for using the Performance Monitor, Chat, and Scheduled File Action functions. You can install these services on one or many machines, as required.

EMCO Remote Desktop provides two ways to install these services:

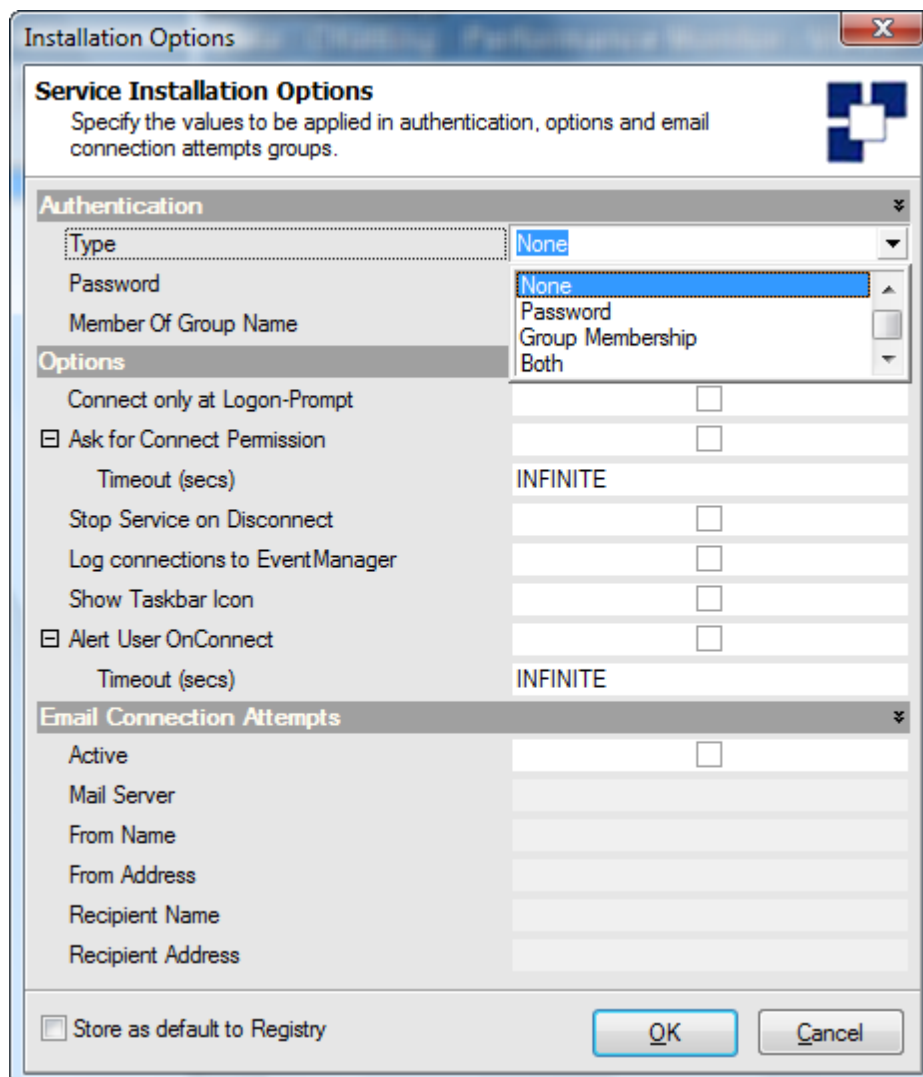
- ▣ [Install services through Remote Desktop](#)
- ▣ [Installing NetRemotingUtils service manually](#)

This document describes the manual installation of these services in detail.

Install services through Remote Desktop

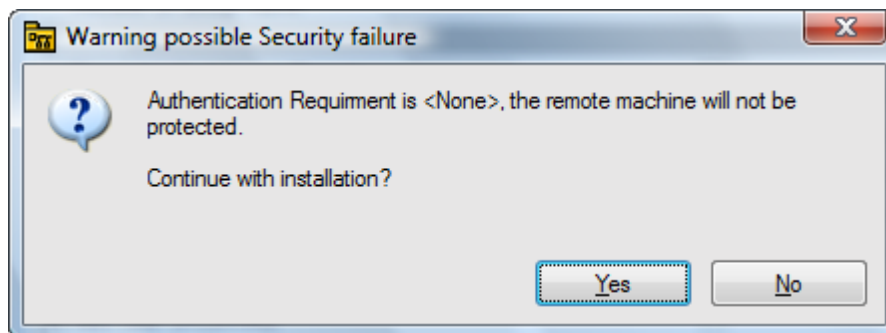
To Manually Install NetServer Service perform the following steps:

1. Select Viewer->Make Install File menu item. A dialog appears.
2. Select the type of the connection from the Type drop-down list.
3. If you select Password in type of the connection then, password field will be activated, please type the password for that connection in the Password text field. If you select Group Membership then type the group name in the Member of Group text field.

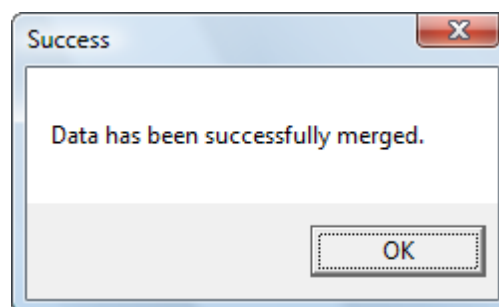


4. If you want to connect only on system log on then check the Connect only at logon-Prompt option.

5. If you want to be prompted for the permission to connect then check the Ask for Connect Permission option, type the timeout for this in Timeout text field.
6. If you want this service to be stopped on disconnection then check the Stop Service on Disconnect option.
7. If you want to log connection to Event manager then check the Log Connection to Event Manager option.
8. If you want to display an icon in the task bar while running this service, please check the Show Taskbar Icon option.
9. If you want to alert user on establishment of connection check the Alert User On Connect option and type the timeout for this in the Timeout text field.
10. Click OK button
11. If you select None as connection type then a message box will appear saying that the authentication type is None, if you want to continue, click Yes otherwise click No and select another connection type.



12. A Save File dialog box will appear asking the location and file name to save the Install file. Enter the file name and click the Save button.
13. Run command prompt (type CMD in Run under Start menu and click ok button)
14. Move to directory %EMCO Remote Desktop
15. Type Netserver/Install. If you get any error message then please check you have typed the command correctly or that the service isn't already running on this machine.
16. Now type .MergeSettings Install file name .VIF. on the command prompt. A message box will appear saying that the Data has been successfully merged.



17. And you are done, Now NetServer Service is successfully installed on this machine.

Installing NetRemotingUtils service manually

To Install NetRemotingUtils perform the following steps:

1. Run command prompt (type CMD in Run under Start menu and click ok button)
2. Move to directory %EMCO Remote Desktop
3. Type NetRemotingUtils/install on the command prompt. A message box will appear saying that the service installed successfully.
4. Click the Ok button, Now the NetRemotingUtil services has been installed on this machine.
5. To start NetRemotingUtils type NetRemotingUtils/start on the command prompt, this will start the NetRemotingUtils service on this system.