

Knowledgebase Article

Running Remote Desktop with XP Pro SP2

© Copyright 2001-2012 EMCO Software

Running Remote Desktop with XP Pro SP2

This tutorial will guide you on running Remote Desktop. For this you have to configure Firewall on a machine on which you want to install Remote Desktop. Windows XP service Pack 2 comes up with a built in firewall to minimize the chance of attacks on your machine.

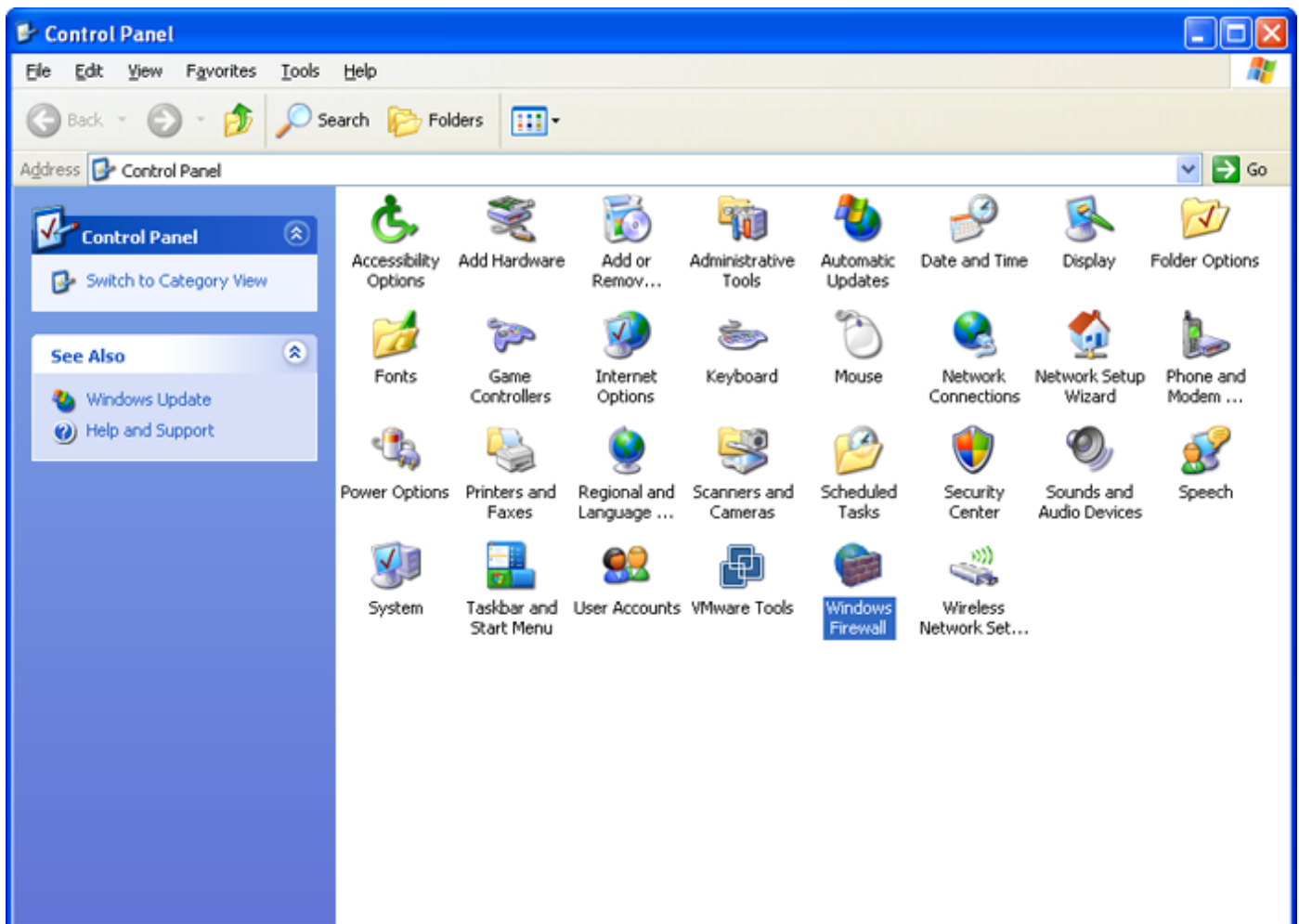
To run EMCO Remote Desktop on your machine perform the following steps:

1. Install EMCO Remote Desktop on your machines.
2. Configure Firewall on your machines(Please see the next session for more information about configuring Firewall on your machine)

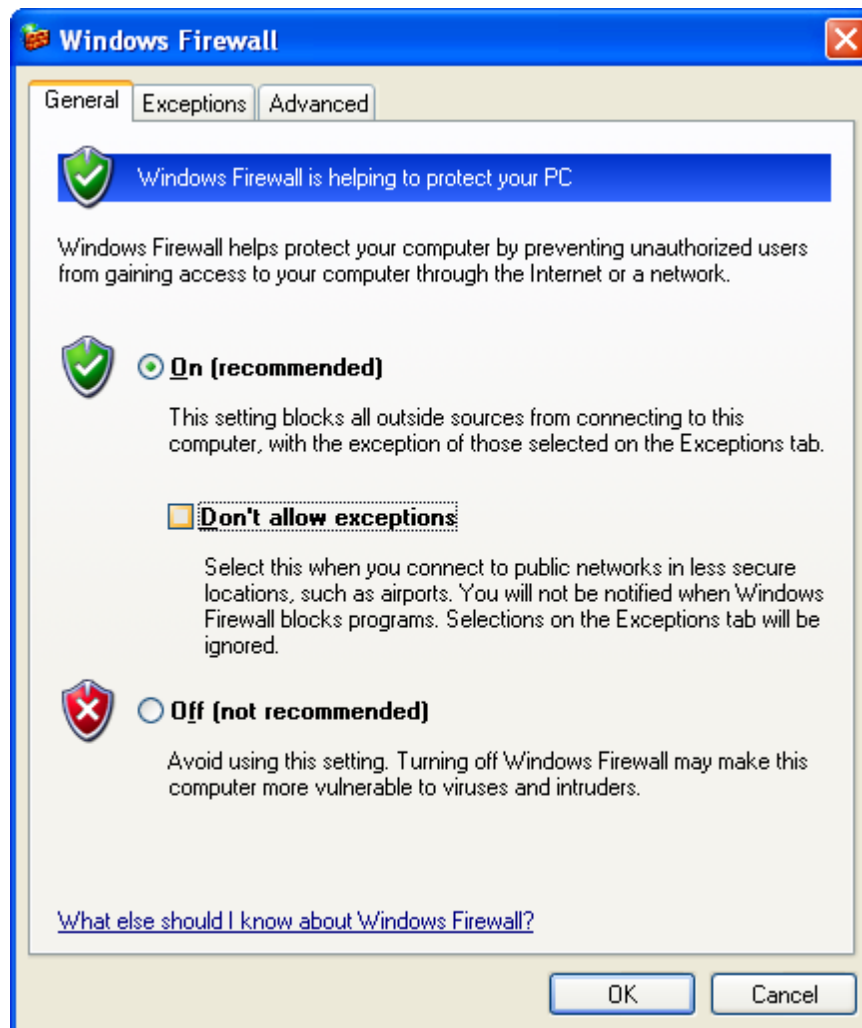
Configure Firewall

To configure Firewall on your machines perform the following steps:

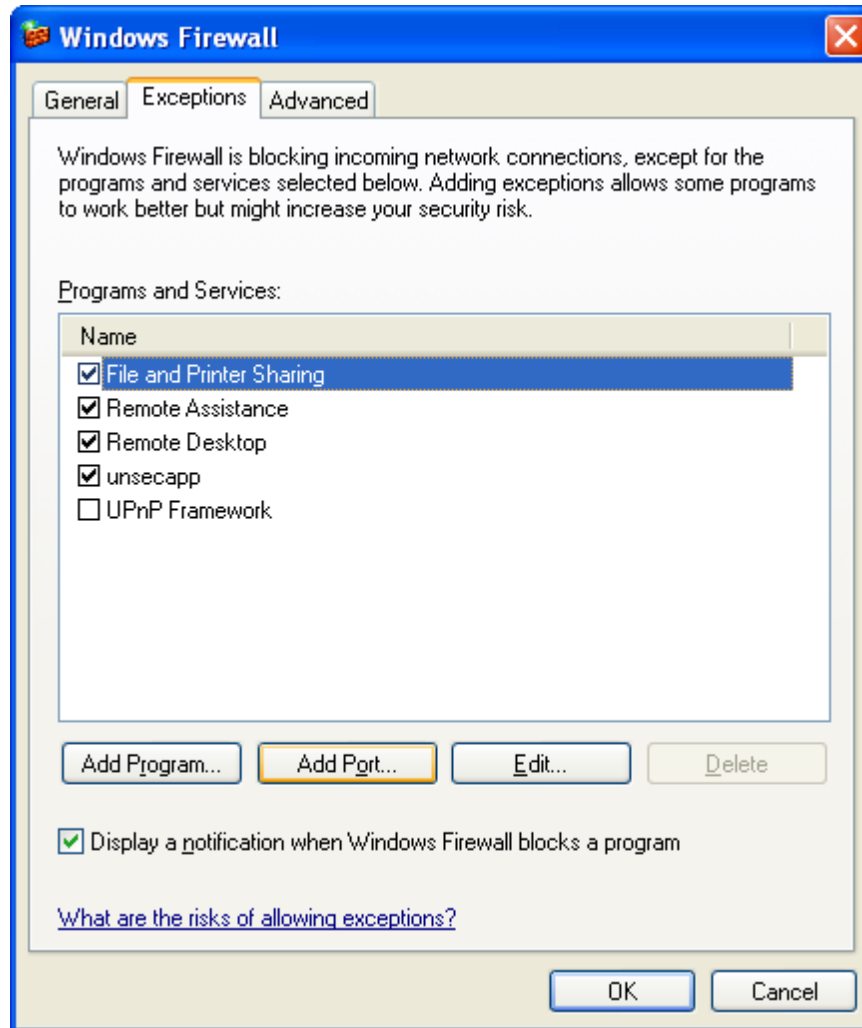
1. Move to Control Panel.
2. Double click the Windows Firewall icon located in the Control Panel to launch the Windows Firewall applet.



3. Windows Firewall dialog box will appear on the screen.
4. Switch to the General Tab.
5. If Firewall is turned on; make sure Don't allow exceptions check box is unchecked.

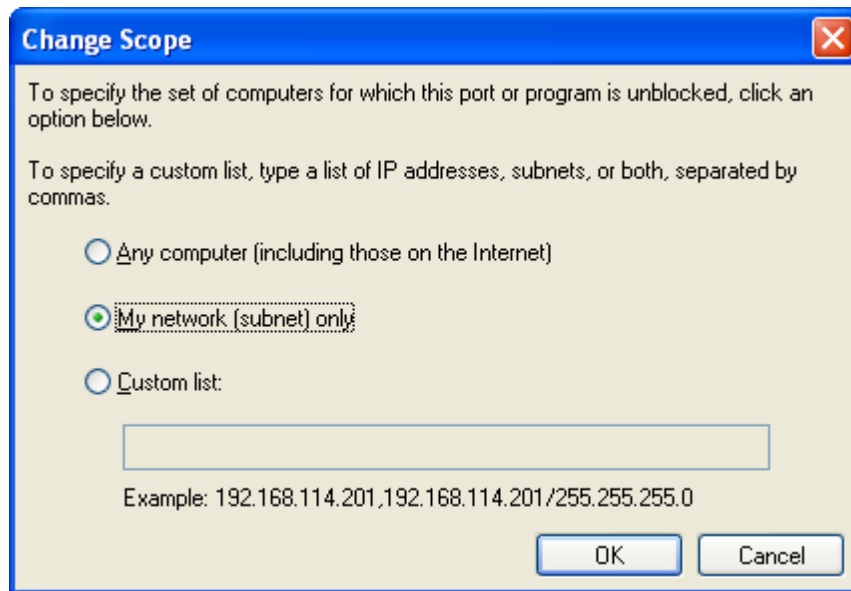


6. Switch to Exceptions tab.
7. Check the File and Printer Sharing checkbox.



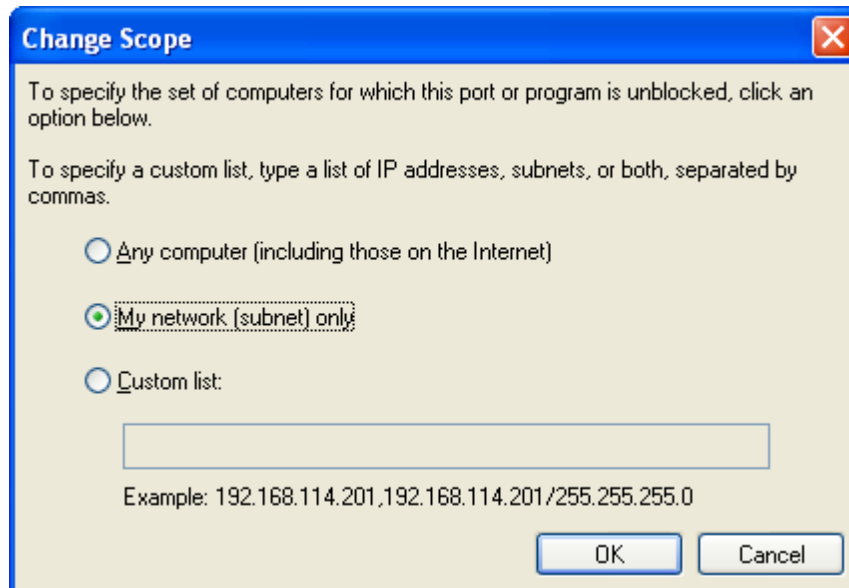
8. Click the Add Program button.

9. Add Program dialog box will appear on the screen.
10. Click the Browse button.
11. File open dialog box will appear on the screen.
12. Locate the NetRemotingUtils.exe in %SYSTEM32% and click Open button.
13. Click Change Scope button.
14. Change Scope dialog box will appear on the screen.
15. Click the My network (subnet) only radio button.

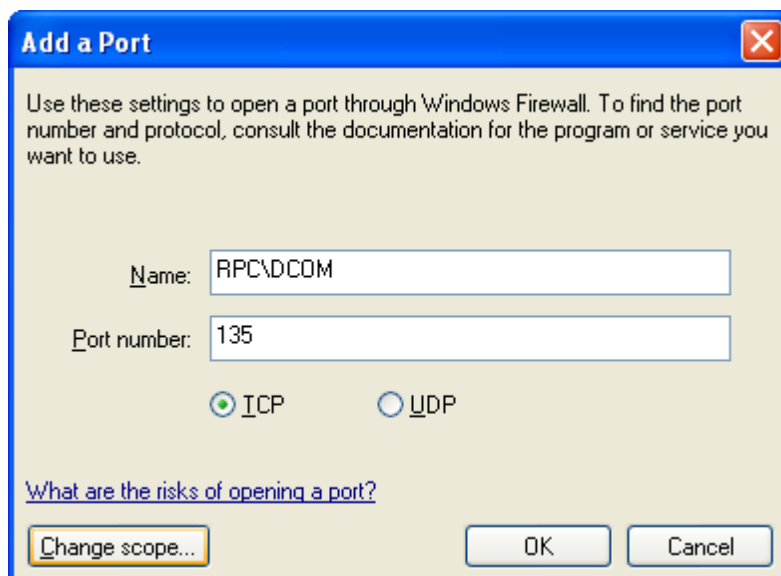


16. Click OK button.

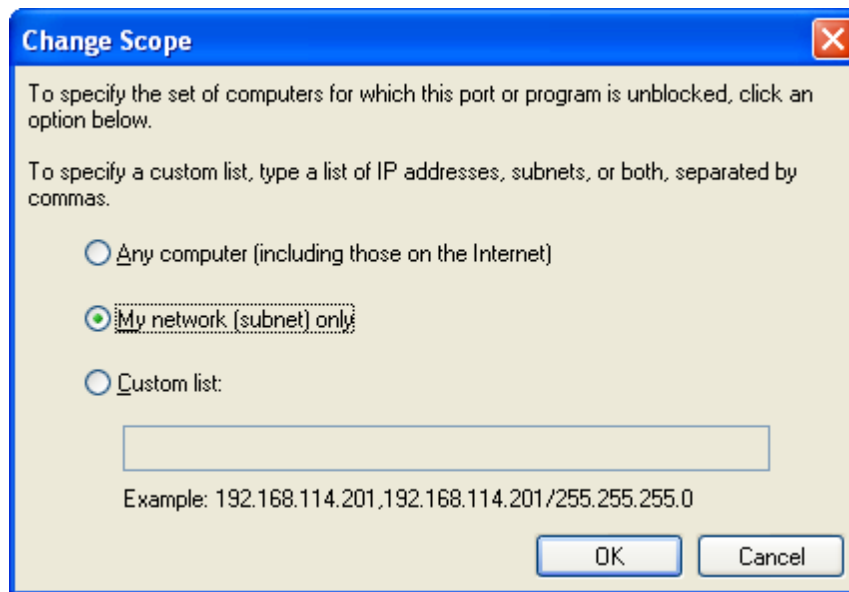
17. Click the Add Program button.
18. Add a Program dialog box will appear on the screen.
19. Click the Browse button.
20. File open dialog box will appear on the screen.
21. Locate the NetServer.exe in %SYSTEM32% and click Open button.
22. Click Change Scope button.
23. Change Scope dialog box will appear on the screen.
24. Click the My network (subnet) only radio button.



25. Click OK button.
26. Click OK again in Add a Program dialog box.
27. Click Add Port button.
28. Add a Port dialog box will appear on the screen.
29. Type RPC\DCOM in the Port Name textbox.
30. Type 135 in the Port Number textbox.
31. Click TCP radio button to select it.



32. Click Change Scope button to set the scope of this port.
33. Change Scope dialog box will appear on the screen.
34. Click the My network (subnet) only radio button.



35. Click OK button.
36. Please repeat the steps from 29 to 36 to add the following ports as well:
 - a. 136
 - b. 139
 - c. 445
 - d. 6200
37. Click OK button again in Add a Port dialog box.
38. Click the OK button in the Windows Firewall dialog box.
39. You are now ready to run Remote Desktop on this machine.

System Requirements for Remote Desktop

<http://emcosoftware.com/remote-desktop/requirements>