

Knowledgebase Article

The Create Overtake Machine Shortcut

© Copyright 2001-2012 EMCO Software

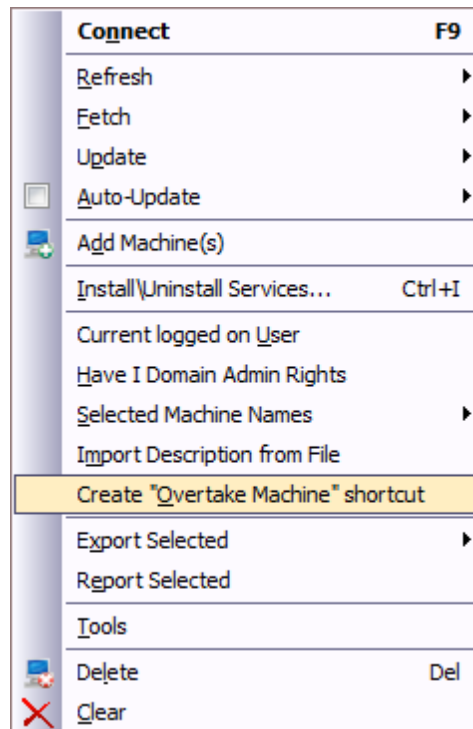
The Create Overtake Machine Shortcut

The Remote Desktop program has a feature you can let it create a desktop shortcut to any computer you want available from the machine tree.

And on double click it will execute the Remote Desktop program and immediately try to connect to the computer it is assigned to.

Right click on any computer you want to create the shortcut to and select the Create "Overtake Machine" shortcut menu item.

See screen shot below.



Just that easily, the Remote Desktop program will have the Machine desktop shortcut created. Double-clicking the shortcut will execute the Remote Desktop program and immediately connect to the remote computer.

