

Knowledgebase Article

The Options tab in Remote Desktop

© Copyright 2001-2012 EMCO Software

The Options tab in Remote Desktop

The Options tab in the Emco Remote Desktop allows the user to select settings governing what information can be gathered from the remote clients, auto fetching new computers into the machine tree, auto updating of a remote computer's information, and many other options critical to the effective and efficient operation of the program.

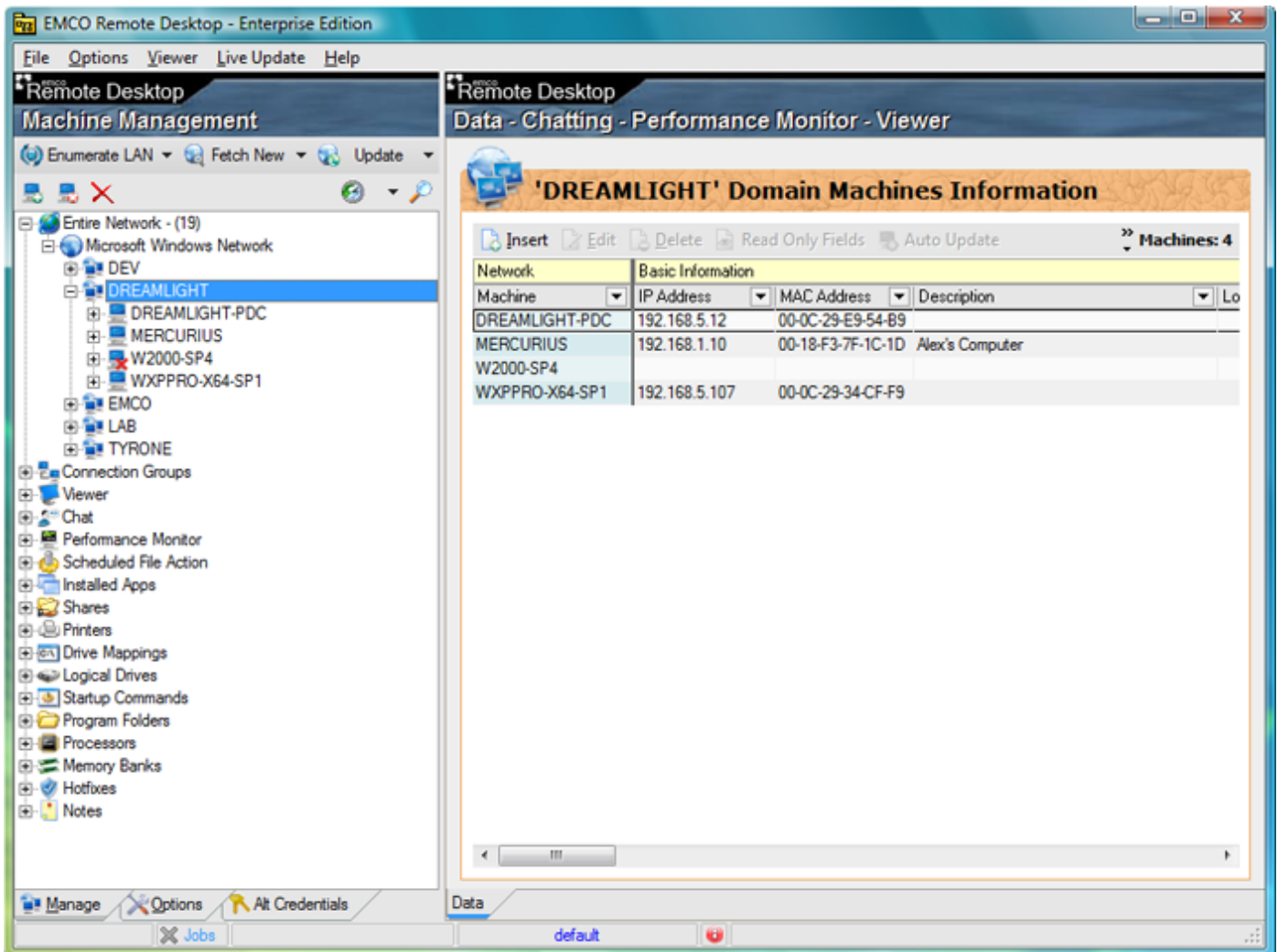
The Option settings in the Remote Desktop program are empty by default, but upon option selection, options will be maintained and be reloaded upon restart of the program.

Before querying remote computers for audit information, configure the options governing what information can be gathered from the remote clients as in the example below:

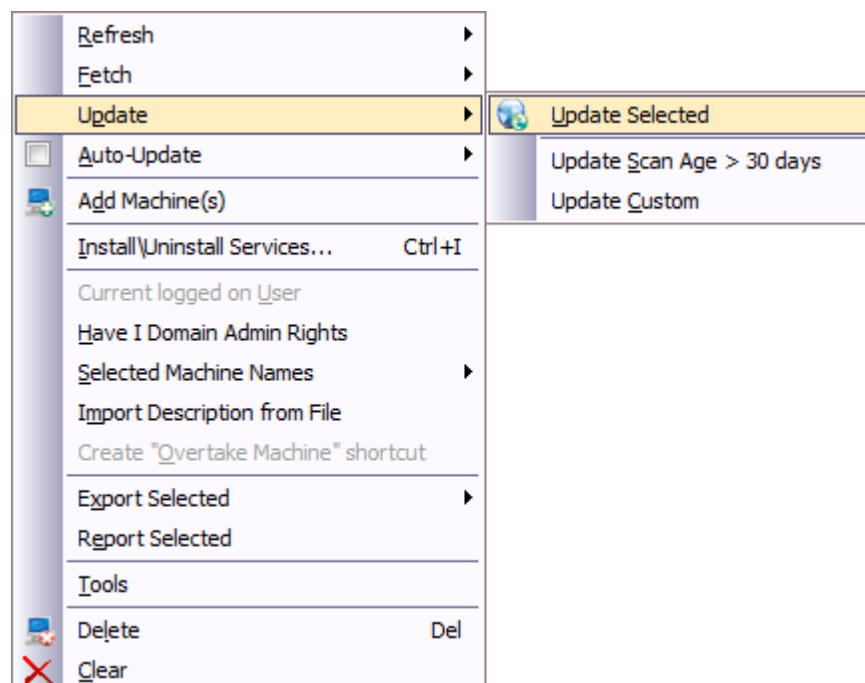
Brief Scan Options	
<input checked="" type="checkbox"/> Basic Information	<input checked="" type="checkbox"/>
Remote Services Installed	<input checked="" type="checkbox"/>
Hardware Information	<input checked="" type="checkbox"/>
Software Information	<input checked="" type="checkbox"/>
System Information	<input checked="" type="checkbox"/>
Detailed Scan Options	
Installed Apps	<input checked="" type="checkbox"/>
Shares	<input checked="" type="checkbox"/>
<input checked="" type="checkbox"/> Printers	<input checked="" type="checkbox"/>
Include Remote	<input checked="" type="checkbox"/>
Drive Mappings	<input checked="" type="checkbox"/>
Disk Info	<input checked="" type="checkbox"/>
Startup Commands	<input checked="" type="checkbox"/>
Program Files	<input checked="" type="checkbox"/>
Processors	<input checked="" type="checkbox"/>
Memory Banks	<input checked="" type="checkbox"/>
Hotfixes	<input checked="" type="checkbox"/>
Auto Processing	
Auto Fetch	
Active	<input type="checkbox"/>
Interval Frequency	1 minutes
Provider	
Domain	
Auto Update	
Active	<input type="checkbox"/>
Interval Frequency	1 minutes

After configuring options using the Options tab, select the Manage tab from the bottom of the main form.

By selecting the Domain tree, the computers in the tree will appear:



By selecting the computers from the Domain tree node from which audit information is required and right clicking on them, a popup menu will appear. Select Update from the main pop-up menu, and Update Selected from the sub-menu:



The program will start the query process and will fetch information from the selected computers based on the preferences configured on the Options tab.

After the scanning process, the main tree node will close. This means the scanning process has concluded. Re-open the Networking tree node, the Microsoft Windows Network tree node, and select the Domain name under which the audited computers reside.

The audited computers appear under the selected Domain. Select the computer on which audit information is desired. Information will appear in the Data window to the right of the main screen. The type of information displayed is linked to the Options as configured in the Options tab.

The screenshot shows the EMCO Remote Desktop - Enterprise Edition interface. The left pane displays a tree view of the network structure, with 'MERCURIUS' selected under the 'Microsoft Windows Network' > 'DREAMLIGHT' domain. The right pane, titled 'Data - Chatting - Performance Monitor - Viewer', displays detailed information for the selected machine.

MERCURIUS Last Update: 2/5/2009 Scan Date: 2/5/2009 10:46:03 AM

Machine: MERCURIUS IP-Address: 192.168.1.10
 Domain\Workgroup: DREAMLIGHT MAC Address: 00-18-F3-7F-1C-ID
 Description: Alex's Computer
 Viewing Svc Installed: Utilities Svc Installed:

Hardware Information

Software Information

Operating System		Other	
OS Name:	Windows Vista	Product ID:	89529-970-020000-9
OS Type:	Workstation		
Service Pack:	Service Pack 1		
Build Number:	6001		
Install Date:	2008-08-07		

System Information

Shares		Other	
ADMIN\$	C:\Windows	BIOS Serial Number:	SYS-1234567890
C\$	C:\	Current Users:	Alex
D\$	D:\	Time of Day:	2009-02-05 10:46:03
IPC\$			
Public	C:\Users\Public		

After audit data from the remote computer is retrieved, it is possible perform export/report functions, retrieve installed applications count results, perform license tracking, and filter results to determine which of the remote computers have specified audit information installed.

For example, by selecting the Installed Apps node, the Installed Applications of the selected remote computer can be displayed. To see Installed Applications on all computers from a specific Domain available in the machine tree, simply select the Domain.

The screenshot shows the EMCO Remote Desktop interface. On the left, the 'Machine Management' tree is visible with 'DREAMLIGHT' selected under the 'EMCO' domain. The main window displays the 'Installed Apps' for the selected machine, listing 17 applications with columns for Name, Version, Install Location, and Uninstall String.

Machine	Display Name	V...	Install L...	Uninstall String	Ti...
DREAMLIGHT-PDC	Total Commander (Remove or Repair)			c:\totalcmd\curinst.exe	2/5/2
MERCURIUS	Adobe AIR	1.0.49	D:\	C:\Program Files (x86)\	2/5/2
MERCURIUS	Acrobat.com	1.1.37	C:\Program Fil	C:\Program Files (x86)\	2/5/2
MERCURIUS	EMCO MSI Package Builder Enterprise			"C:\Program Files (x86)"	2/5/2
MERCURIUS	EMCO MSI Package Builder Professiona			"C:\Program Files (x86)"	2/5/2
MERCURIUS	EMCO Network Inventory Enterprise			"C:\Program Files (x86)"	2/5/2
MERCURIUS	EMCO Remote Administration Profession			"C:\Program Files (x86)"	2/5/2
MERCURIUS	EMCO Remote Desktop Professional			"C:\Program Files (x86)"	2/5/2
MERCURIUS	EMCO Remote Installer Professional			"C:\Program Files (x86)"	2/5/2
MERCURIUS	EMCO Remote Shutdown Professional			"C:\Program Files (x86)"	2/5/2
MERCURIUS	LiveUpdate 3.2 (Symantec Corporation)	3.2.0.f	"C:\Program F	"C:\Program Files (x86)"	2/5/2
MERCURIUS	Adobe AIR	1.0.8.4		MsiExec.exe /I{002036	2/5/2
MERCURIUS	EMCO Remote Screenshot 2x		C:\Program Fil	"C:\Program Files (x86)"	2/5/2
MERCURIUS	Acrobat.com	0.0.0		MsiExec.exe /I{77DCD	2/5/2
MERCURIUS	Adobe Reader 9	9.0.0	C:\Program Fil	MsiExec.exe /I{AC76B	2/5/2
MERCURIUS	Hotfix for Microsoft .NET Framework 3.5 1			C:\Windows\SysWOW	2/5/2
MERCURIUS	VMware Remote Console Plug-in	2.5.0.1		MsiExec.exe /X{D2F28	2/5/2