

Knowledgebase Article

The machine tree popup menu features

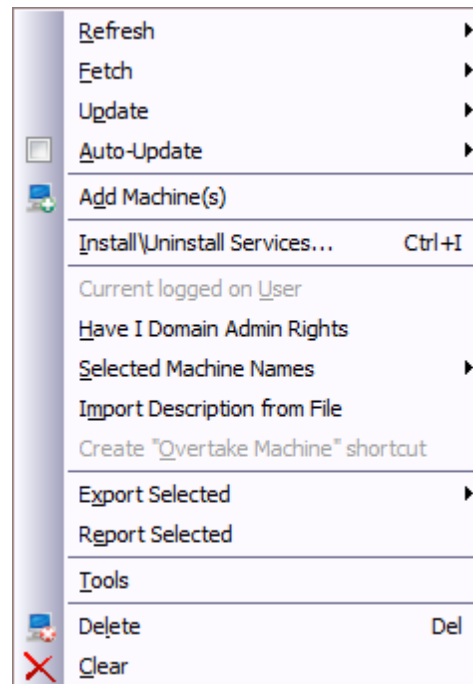
© Copyright 2001-2012 EMCO Software

The machine tree popup menu features

The Remote Desktop program has many important features available from the machine tree pop-up menu and it is very important for users to know about them in detail. In this document we will talk about every feature each menu item perform in this program.

To access this menu you need to right click on any tree available in the machine tree to the left on the main screen as the picture below shows.

Machine Tree – Pop-up Menu.



If any of the menu items are disabled on right click that means you cannot perform the selected action on that spot you right click.

Description of each item explained below.

Enumerate

From this menu item you can perform all actions for scanning your network to fetch computers into the machine tree for later use in the program.

It includes these features for scanning a LAN/WAN. "Enumerate LAN" will try to scan all your available networks from the Network Neighborhood list and fetch them into the machine tree. "Enumerate LAN via IP-Range" gives you the opportunity to fetch computers from a range of IP addresses, a really useful feature if you need to add computers from another LAN/WAN. "Enumerate LAN via Domain Name" lets you fetch all available computers from a specific domain.

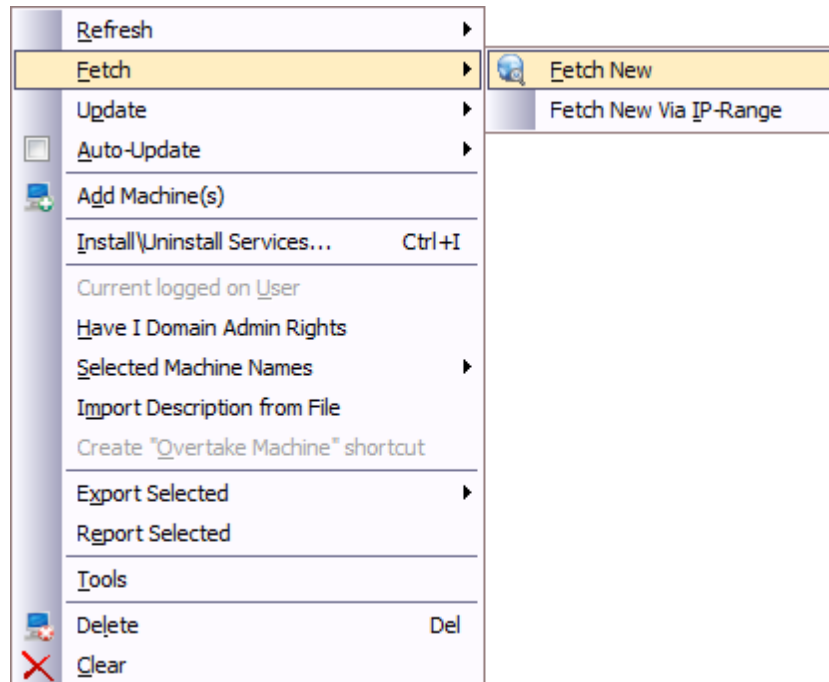
Fetch

From this menu item you can perform the Fetch New Machine function in the program. The Fetch New Machines item allows you to fetch all new computers into the machine tree since last scan, can be very useful when there is a need to get all laptop's etc... Fetch New Machines via IP-Range allows you to fetch new computers added to the network from a range of IP addresses.

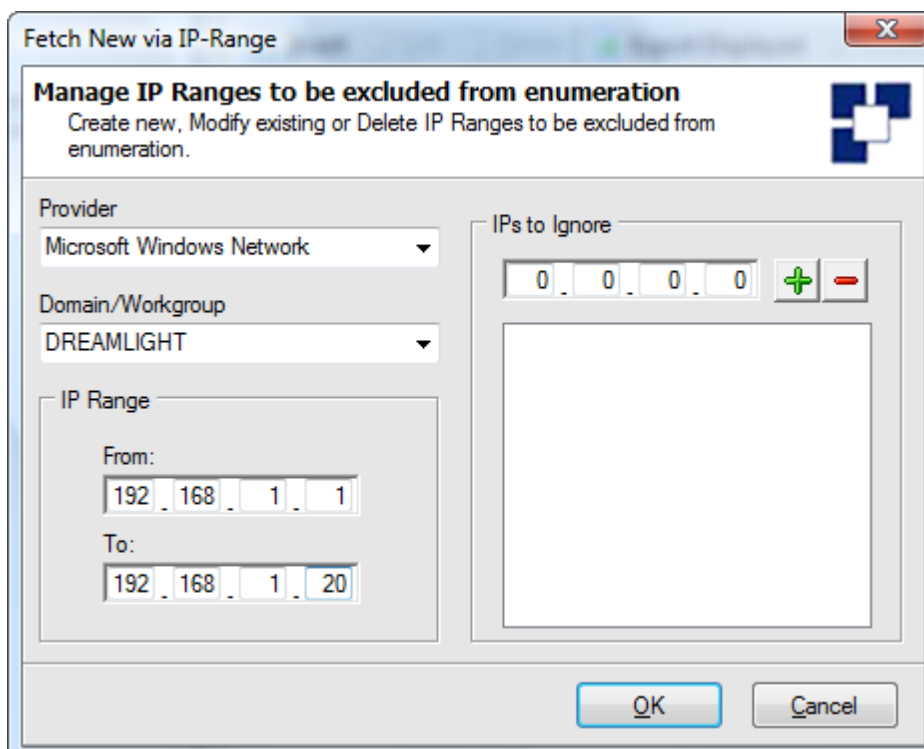
Feel free to read this online document about the Fetch feature.

How to use the Fetch New feature

<http://emcosoftware.com/whitepaper/remotedesktop/v4/How to use the Fetch New feature.pdf>



Fetch New Machines via IP-Range dialog.



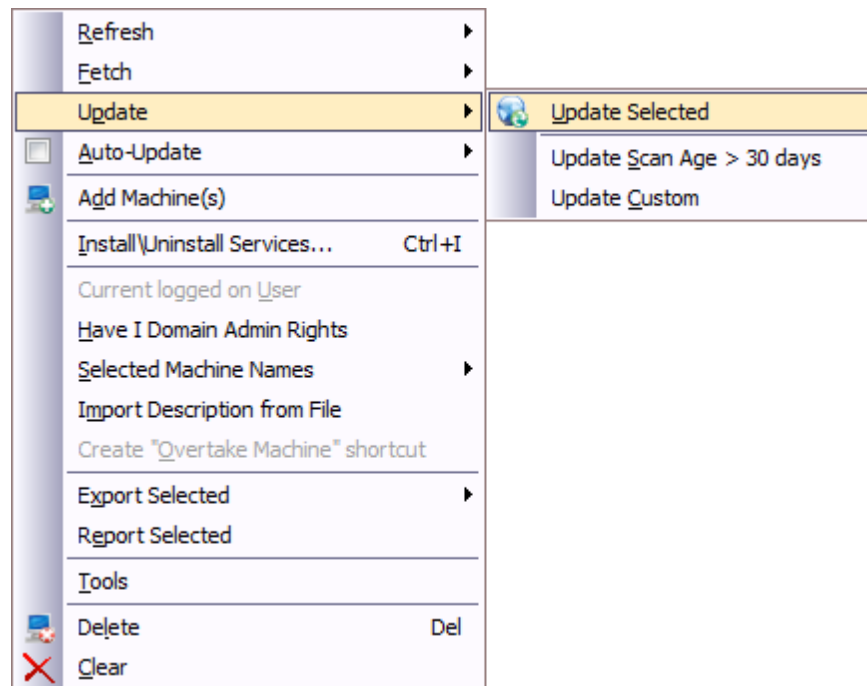
Update

From the Update menu you can perform all the Update tasks in the Remote Desktop program. The Update – Update Selected menu item will perform the update scanning process on selected computers or domain(s). The update process will try to scan each computer for detailed iformations specified in the Options tab located on the main form below.

Screen shot of the Options tab.

Brief Scan Options	
<input checked="" type="checkbox"/> Basic Information	<input checked="" type="checkbox"/>
Remote Services Installed	<input checked="" type="checkbox"/>
Hardware Information	<input checked="" type="checkbox"/>
Software Information	<input checked="" type="checkbox"/>
System Information	<input checked="" type="checkbox"/>
Detailed Scan Options	
Installed Apps	<input checked="" type="checkbox"/>
Shares	<input checked="" type="checkbox"/>
<input checked="" type="checkbox"/> Printers	<input checked="" type="checkbox"/>
Include Remote	<input checked="" type="checkbox"/>
Drive Mappings	<input checked="" type="checkbox"/>
Disk Info	<input checked="" type="checkbox"/>
Startup Commands	<input checked="" type="checkbox"/>
Program Files	<input checked="" type="checkbox"/>
Processors	<input checked="" type="checkbox"/>
Memory Banks	<input checked="" type="checkbox"/>
Hotfixes	<input checked="" type="checkbox"/>
Auto Processing	
Auto Fetch	
Active	<input type="checkbox"/>
Interval Frequency	1 minutes
Provider	
Domain	
Auto Update	
Active	<input type="checkbox"/>
Interval Frequency	1 minutes

The screen shot below shows how you can run the Update process on selected computers, but remember you can run it to any domain name instead of computers.



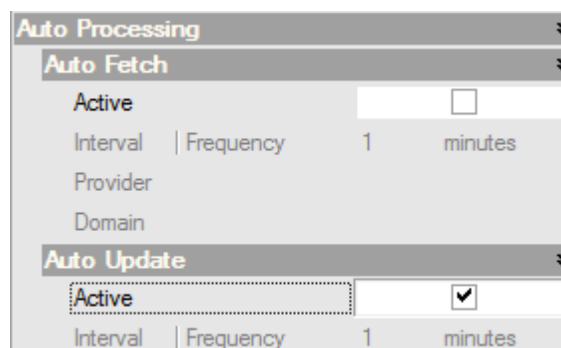
Auto-Update

From the Auto-Update menu you have two functions available for your remote computer(s) or domain(s). The Auto-Update feature in the program allows you to have your computer(s) auto update the audit information regarding the settings from the Options tab. This feature can be very useful when there is a need to always scan your remote computers for some detailed audit informations.

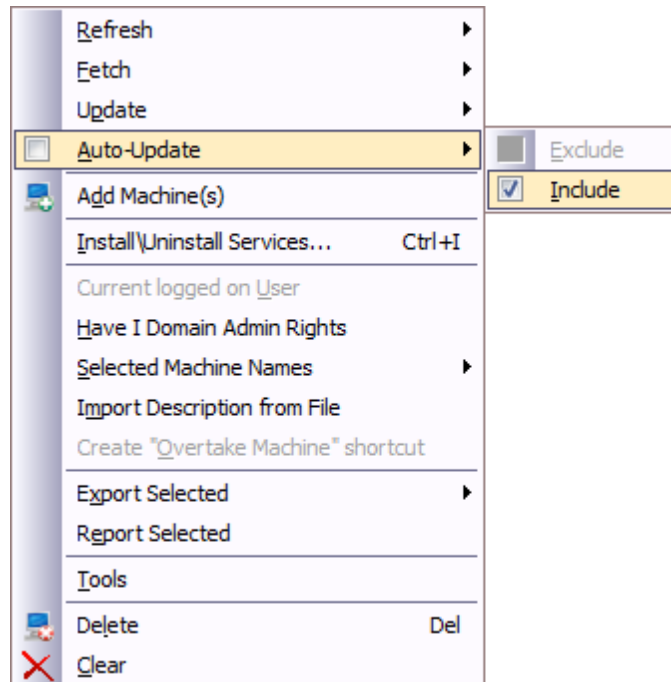
- ★ **Include** - This menu item will mark all your selected computers or domain(s) to be included to the Auto-Update process on next interval.
- ★ **Exclude** - This menu item will un-mark your selected computers or domain(s) to be included to the Auto-Update process.

 The Remote Desktop program allows you to export/report this audit information any time you want from the File – Export / Report menu item.

Screen shot of the Auto-Update settings in the Options settings.



The screen shot below shows how to access this feature in the program. Just right click on any computers (multi select support) or right click on your domain(s) then all computers under the selected domain will be selected as well.

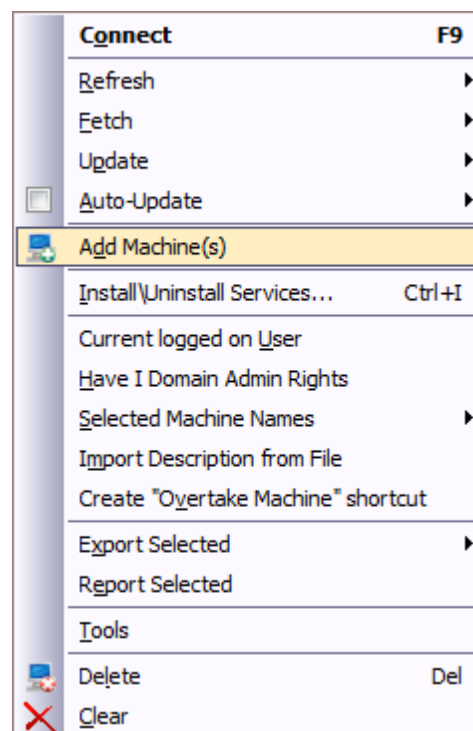


Add Machine(s)

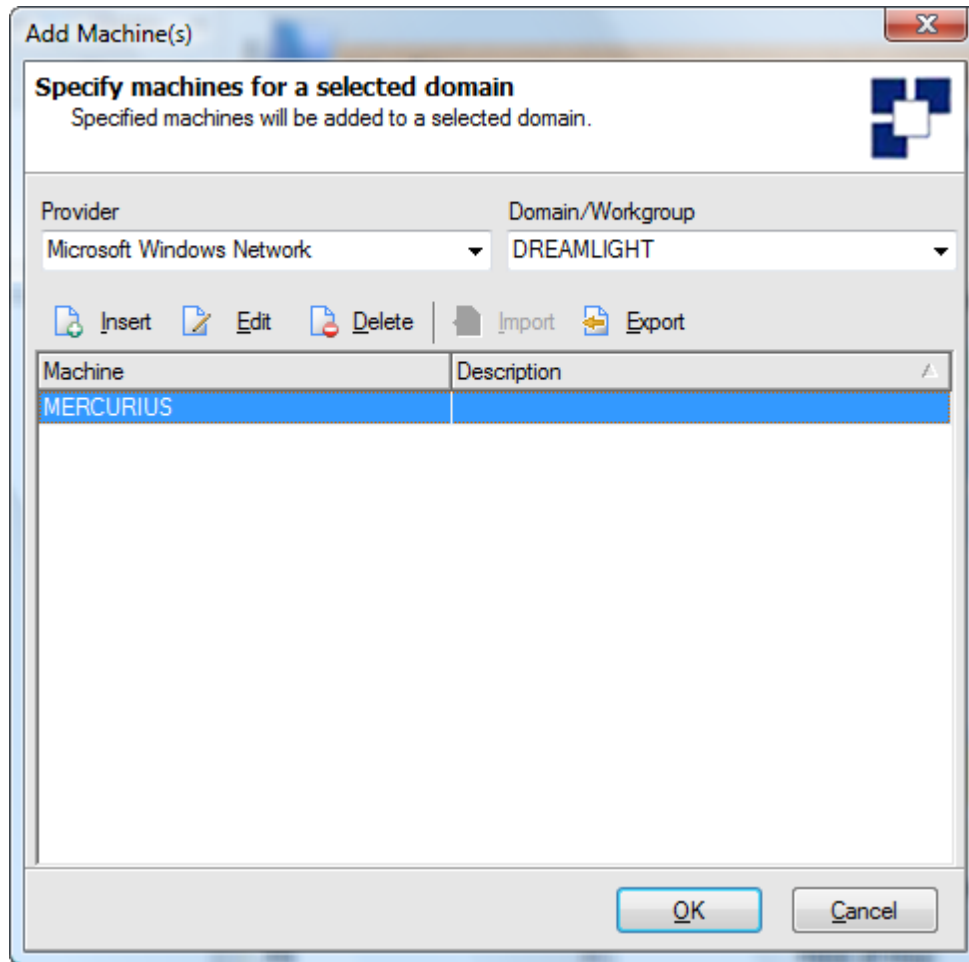
From the Add Machine(s) menu item you can add any computer(s) manually by name/IP address into the machine tree, can be useful when you need computers from another networks or WAN present into the machine tree.



You always need to have Administrator privilege on remote computers to be able to use them in the Remote Desktop program.



When you click on the Add Machine(s) menu item the program will open this dialog.



Read this document to learn more about how to use the Add Machine(s) dialog.

How to add machines manually

<http://emcosoftware.com/whitepaper/remotedesktop/v4/How to add computers manually.pdf>

Install/Uninstall Service

EMCO Remote Desktop can install two services on remote machines: one for viewing remote machines, and one for using the Performance Monitor, Chat, and Scheduled File Action functions (refer to Using the Performance Monitor, Using the Chat function, and Using Scheduled File Actions for more information).

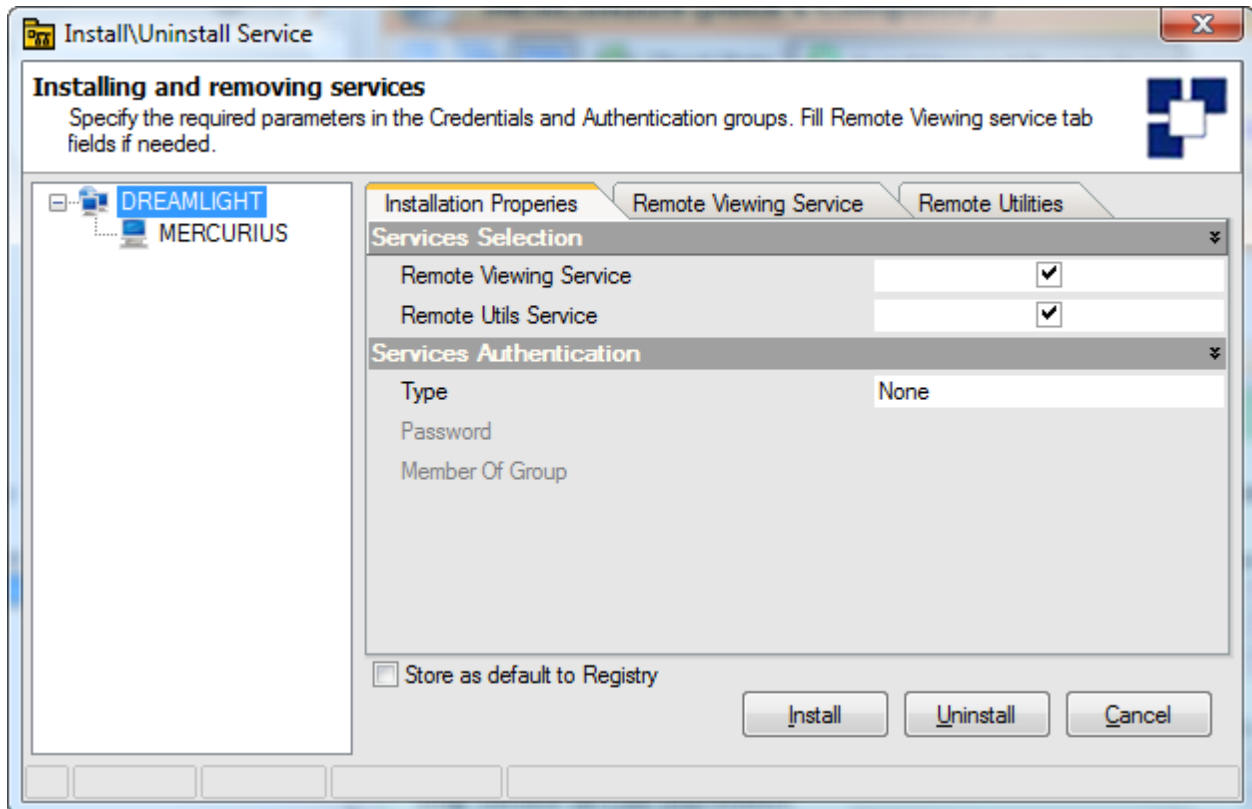
The following options are available when installing the Remote Viewer service:

- ✦ Type - Choose one of the following authentication methods from the drop-down list:
 - None - No authentication is required.
 - Password - Password authentication is required. Enter the required password in the following Password field.
 - Group Membership - The connecting user needs to belong to a particular log on group. Select the required log on type from the Member Of Group Name drop-down list.
 - Both - Both Password and Group Membership authentication is required. Enter the required password in the following Password field and select the required log on type from the Member Of Group Name drop-down list.
- ✦ Connect only at Logon-Prompt - Only allow connections at the log on prompt on the remote machine.
- ✦ Ask for Connection Permission - Opens a dialog box on the remote machine which must be accepted in order for EMCO Remote Desktop to connect. Enter the number of seconds that the message is displayed for in the following Timeout field (enter -1 to permanently display the message).
- ✦ Stop Service on Disconnect - Stops the Remote Viewer service when the connection to the remote machine is closed.
- ✦ Log Connections to EventManager - Log all Remote Viewer connections to the Event Manager.
- ✦ Show Taskbar Icon - Displays an EMCO Remote Desktop icon in the remote machine's task bar when connected.
- ✦ Alert User OnConnect - Sends a message to the user of the remote machine when it is connected to by EMCO Remote Desktop. Enter the number of seconds that the message is displayed for in the following Timeout field (enter -1 to permanently display the message).

To install services on remote machines:

1. If you only want to install the Remote Viewer service on one machine:
 - a. Click on the machine that you want to install the Remote Viewer service on in the Viewer portion of the Machine Management area.
 - b. Click on the Install the Remote Desktop Server link.
 - c. If you need to temporarily log on as another user, select Use Temporary Credentials option and enter the required user name and password in the User and Password fields.
 - d. Click on the Install button.
 - e. Set the install options as described at the beginning of this topic.
 - f. Click on the OK button. The service is now installed on the remote machine.
2. If you want to install the Remote Viewer service on more than one machine, or you want to install the Remote Utilities service (to enable the Performance Monitor and Chat functions):
 - a. Click on all of the machines that you want to install on in the Viewer portion of the Machine Management area.
 - b. Right-click and click on the Deploy Remote Desktop Client menu option.
 - c. Select the appropriate options for the services that you want to install.

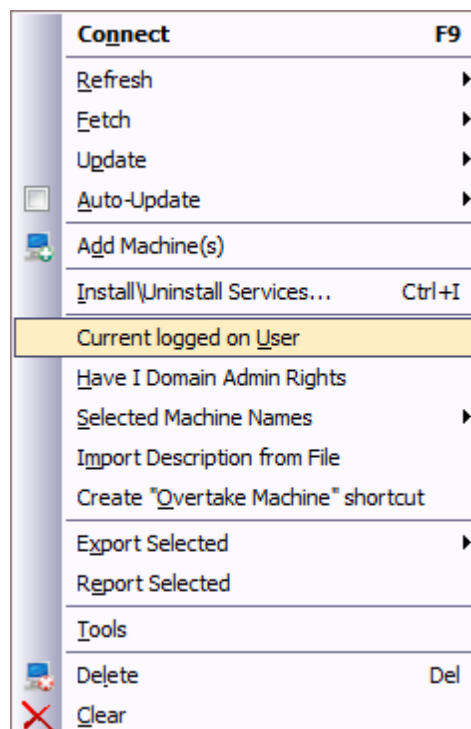
- d. If you need to temporarily log on as another user, select Use Temporary Credentials tick option and enter the required user name and password in the User and Password fields.



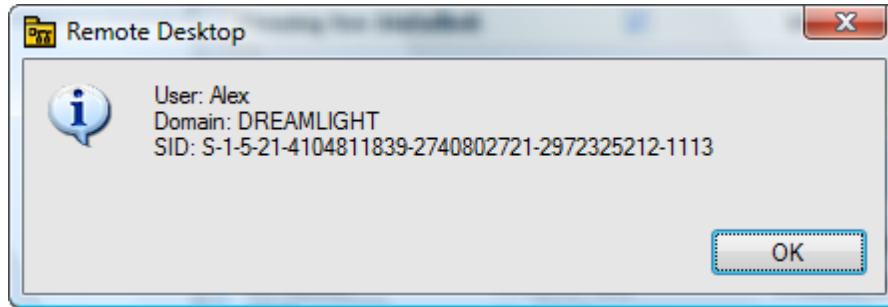
- e. Click on the Install button.
- f. If you are installing the Remote Viewer service, set the install options as described at the beginning of this topic.
- g. Click on the OK button. The services are now installed on the remote machine(s).

Current logged on User

This menu item you can let the program scan the selected computer for any logged on user information. Info that is returned back is the username and the user's SID number.

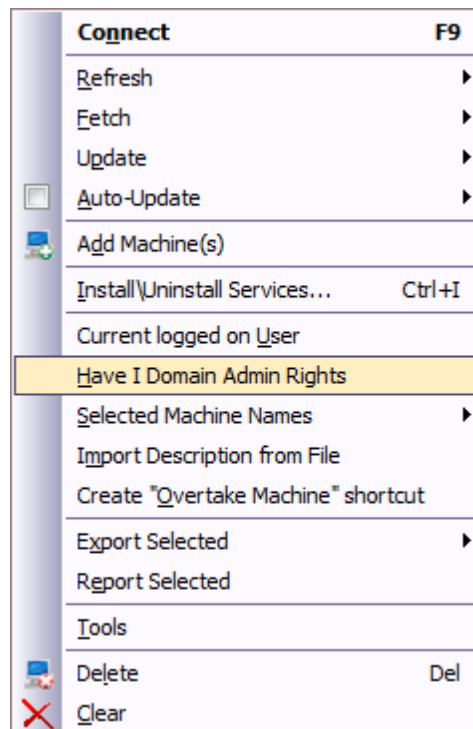


Screen shot of the Current logged on User dialog.

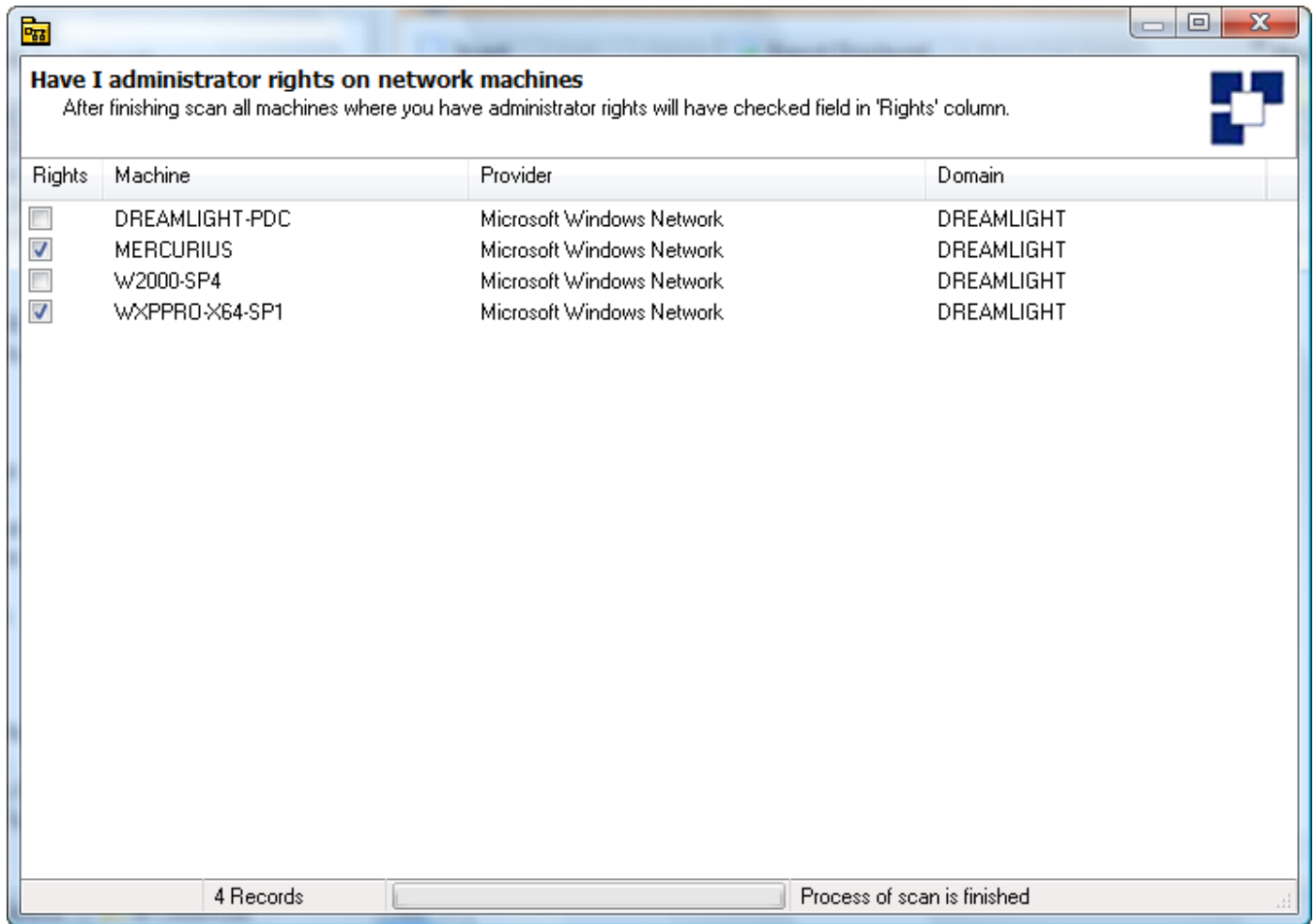


Have I Domain Admin Rights

From this menu you can check whether you have Administrator privilege to remote computers you have selected from the machine tree. Can be very useful feature when there is a need to check for enough privilege to your network computers before using them in the program.

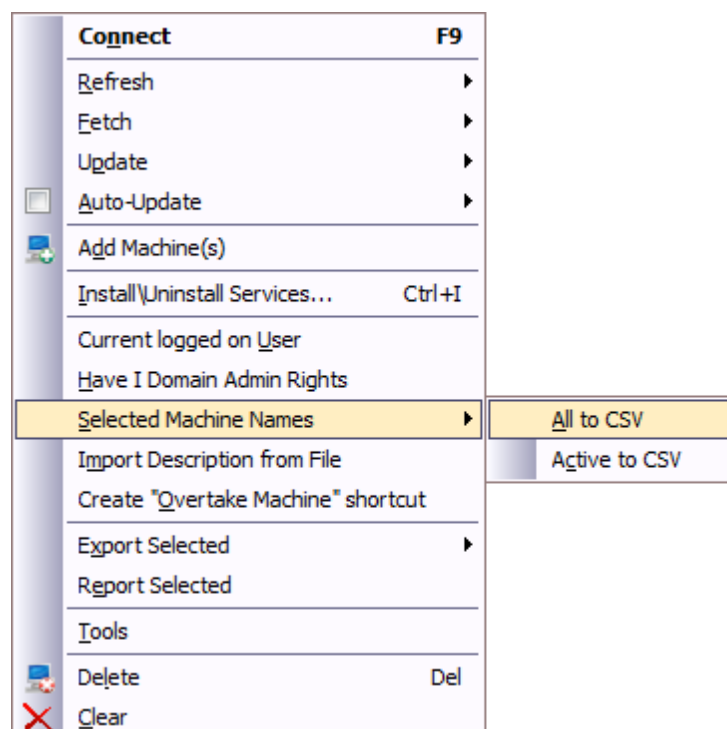


Screen shot of the Have I Administrator Right dialog.



Selected Machines Names

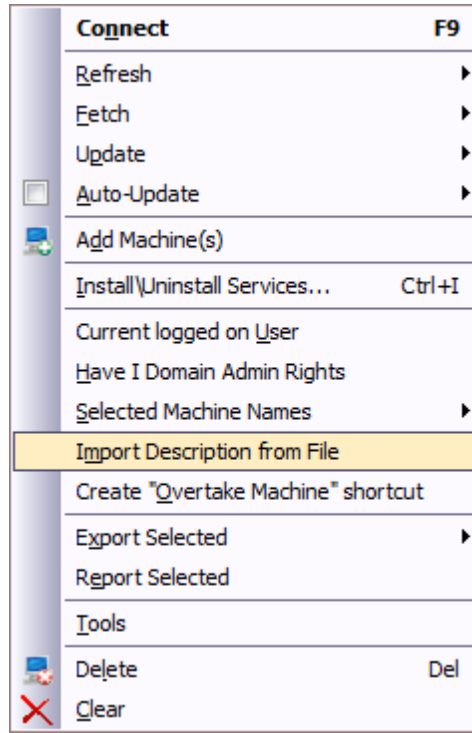
From this menu you can export all computer names to CSV type, and you can export only Active computers to this export type as well if selected.



Import Description from File

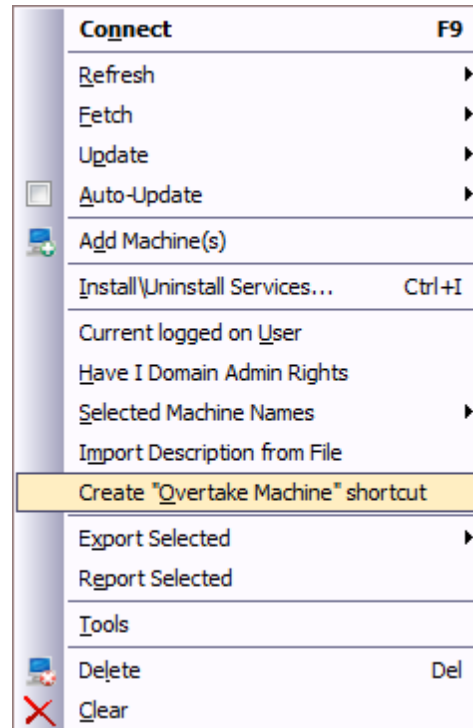
From this menu you can let the program import some descriptions to your computers from a file in CSV format. This is the rule that should be in the file.

ComputerName,Description



Create "Overtake Machine" shortcut

From this menu you can let the program create a direct Desktop shortcut icon, and on double click it will execute the Remote Desktop program and immediately try to connect to the Viewer process. This feature can be very useful and time saving as well.



Feel free to read this online document about this feature.

The Create Overtake Machine Shortcut menu item

<http://emcosoftware.com/whitepaper/remotedesktop/v4/The Create Overtake Machine Shortcut.pdf>

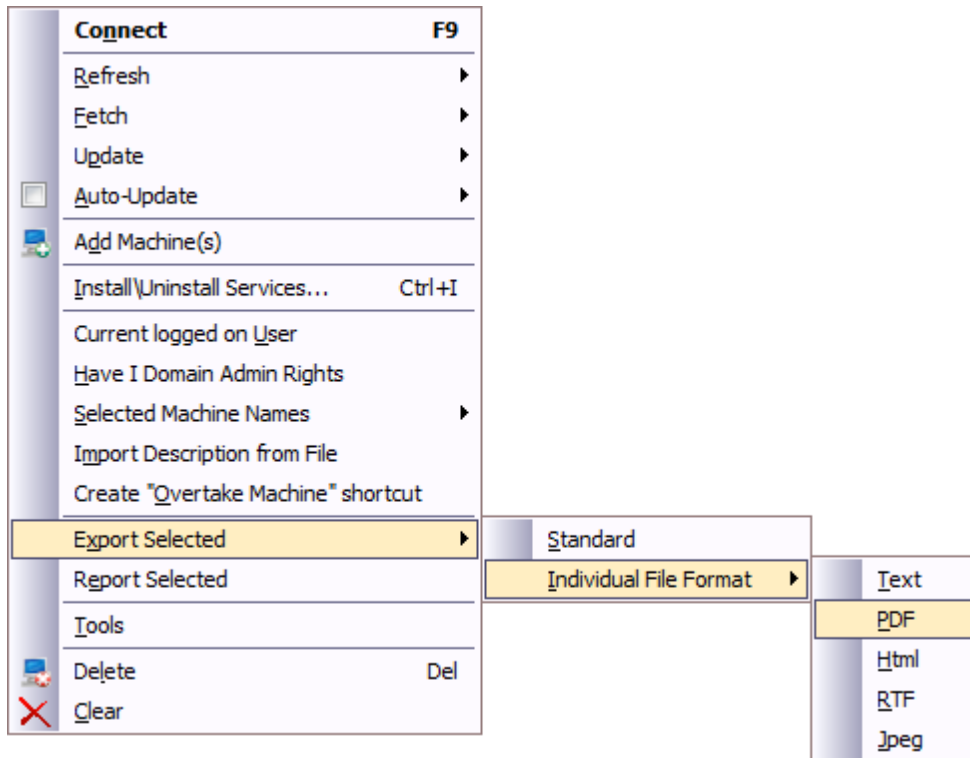
Export Selected

From this menu you have options to export your computers audit data to popular formats including EXCEL, ACCESS, TEXT, PDF, HTML, RTF, JPEG. Standard and Individual Format are supported.

- ★ **Standard** - Will let you export the audit data to EXCEL or ACCESS.
- ★ **Individual Format** - Will let you export selected computers to each individual files of the format you choose from.



Before using this action you first need to audit your network computers from the Update – Update Selected process, and have some of the options checked under Options tab



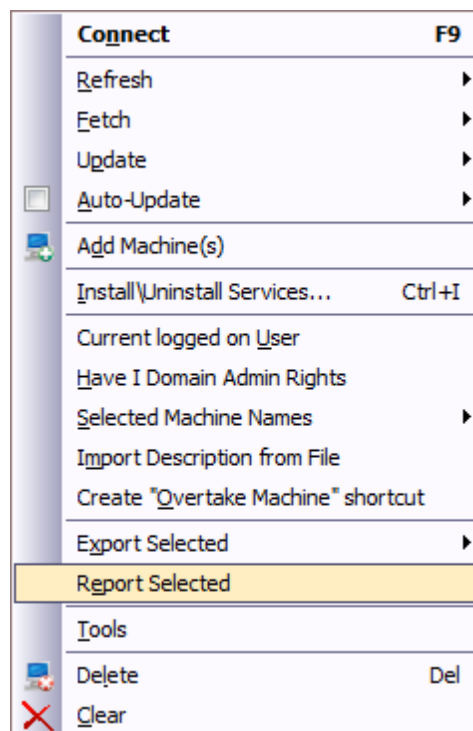
Feel free to read this online document that refers to this feature.

The Options tab in Remote Desktop

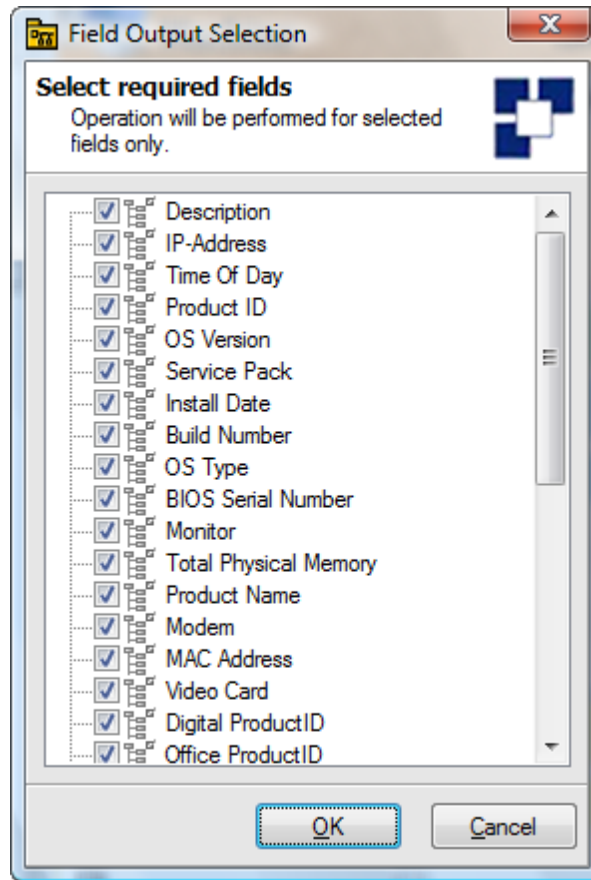
[http://emcosoftware.com/whitepaper/remotedesktop/v4/The Options tab in Remote Desktop.pdf](http://emcosoftware.com/whitepaper/remotedesktop/v4/The%20Options%20tab%20in%20Remote%20Desktop.pdf)

Report Selected

From this menu you can let the program report any of the audit information available from your network computers. Can be useful when you need the audit data directly to your printer.



On click you will get this dialog up where you can check/uncheck the audit information you want to include into report.



Screen shot of the Print Preview dialog.

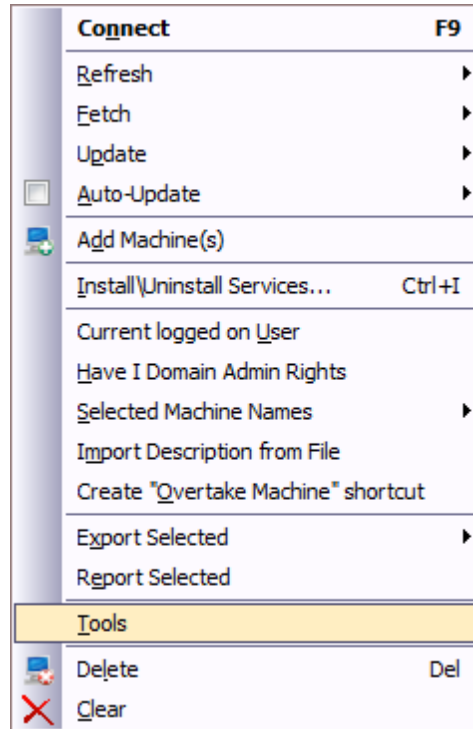
The screenshot shows a 'Print Preview' window with a toolbar at the top containing icons for print, zoom (106%), navigation, and a 'Close' button. The main content area displays system information for a computer named 'MERCURIUS' on the 'DREAMLIGHT' network. The information is organized into several sections:

- Microsoft Windows Network:** DREAMLIGHT \ MERCURIUS, Scan Date 2/5/2009
- Basic Information:**
 - Machine: MERCURIUS, IP-Address: 192.168.1.10
 - Domain\Workgroup: DREAMLIGHT, MAC Address: 00-18-F3-7F-1C-1D
 - Description: Alex's Computer
- Summary Hardware Information:**
 - Mother Board & Processor:**
 - System Name: USTek Computer INC. P5GZ-MX
 - Processor: Intel(R) Core(TM)2 CPU 4300 @ 1.80GHz
 - Processor #2: Intel(R) Core(TM)2 CPU 4300 @ 1.80GHz
 - Logical Drives:**
 - Local Disk D: 39% full, 44.11 GB of 72.73 GB free
 - Local Disk C: 77% full, 8.81 GB of 39.06 GB free
 - Memory:**
 - Total Memory: 1.99 GB
 - Memory Slot 0/2: 1.00 GB installed, Capacity 4.00 GB
 - Memory Slot 1/2: 1.00 GB installed, Capacity 4.00 GB
 - Video System:**
 - Monitor: SyncMaster 940N, SyncMaster Magic CX915N/CX916I
 - Video Card: Intel(R) 82945G Express Chipset Family
 - Other:**
 - Printer: Fax
 - Printer #2: Microsoft XPS Document Writer
- Summary Software Information:**
 - Operating System:**
 - OS Version: Windows Vista
 - OS Type: Workstation
 - Service Pack: Service Pack 1
 - Build Number: 6001
 - Install Date: 8/7/2008 9:38:24 AM
 - Other:**
 - Product ID: [REDACTED]

The bottom left corner of the window shows 'Page 1'.

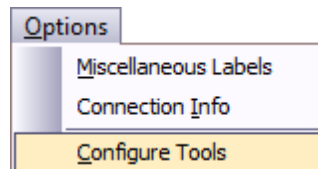
Tools

From this menu you have access to any tools programs you specify from the Configure Tools dialog.



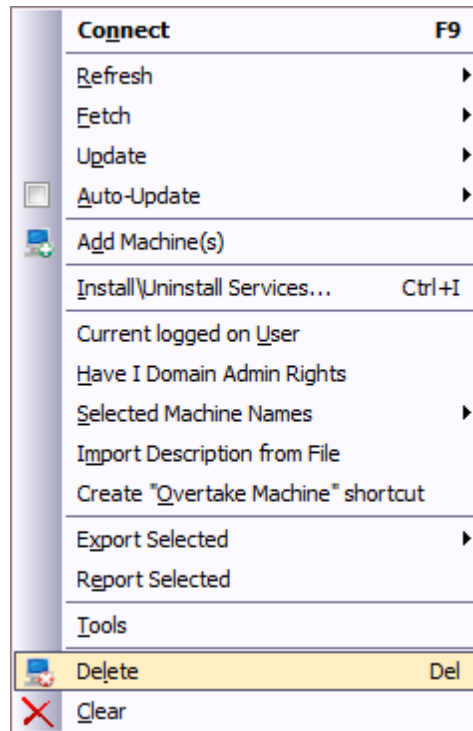
Configure Tools dialog is available from the Options menu as the screen shot below shows. Click on the menu item to open this dialog and assign your Tools settings.

This feature can be useful when there is a need to execute some program with the computer name as the parameter. Quick access feature.

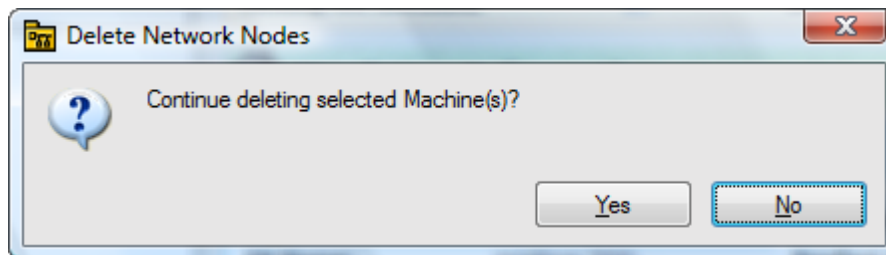


Delete

From this menu you can delete any computer(s) / domain(s) from the machine tree, multi select is supported.

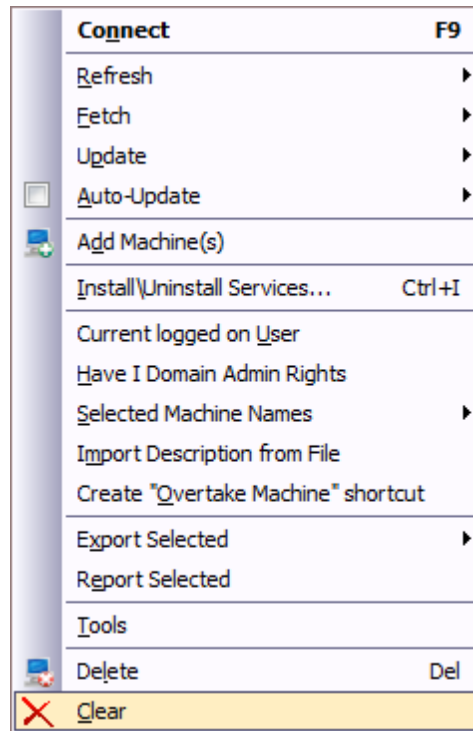


You will always get up this confirmation dialog.



Clear

From this menu you can Clear any of the computer data.



You will always get up this confirmation dialog.

