

Knowledgebase Article

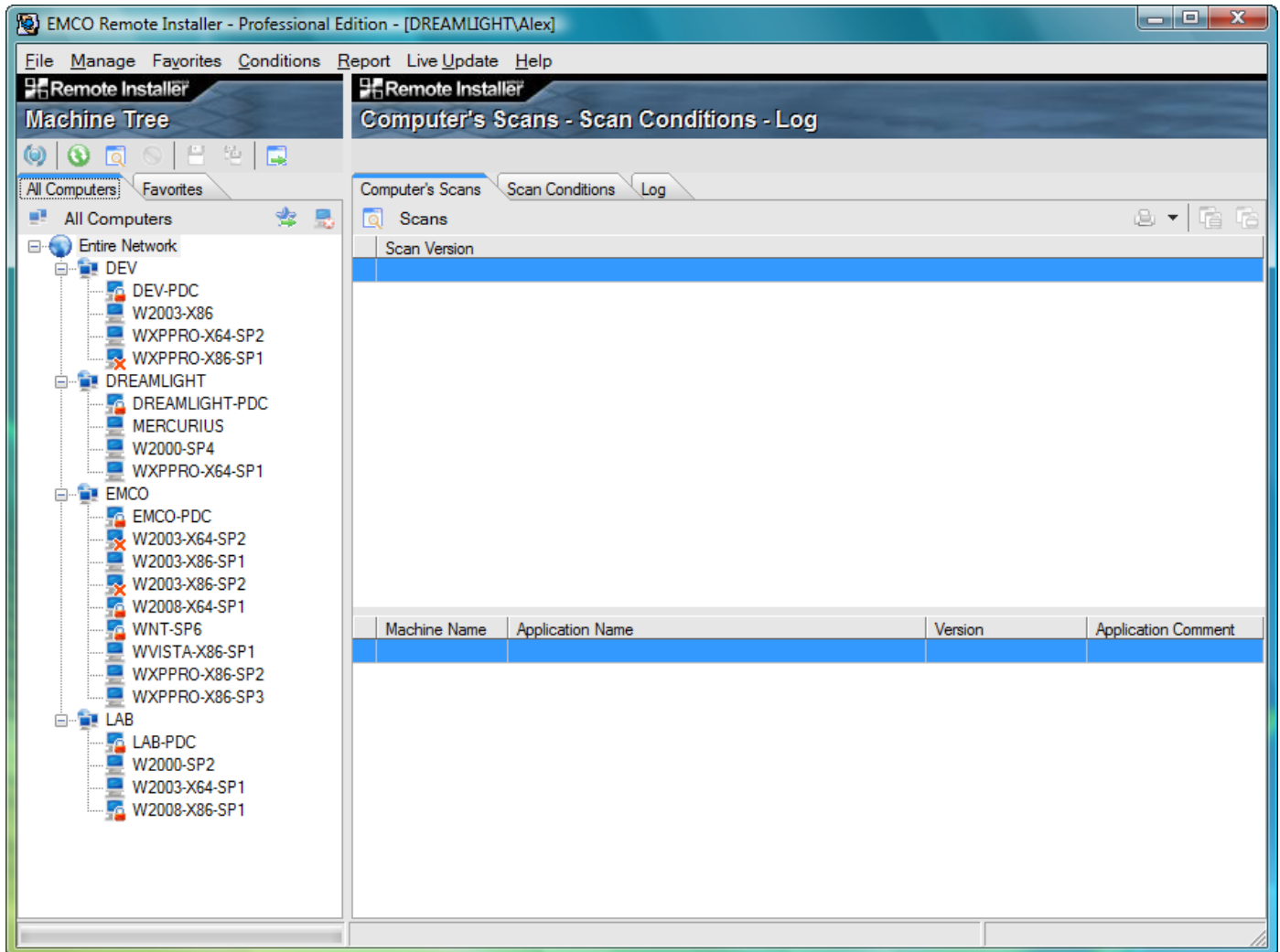
Add Machines to Favorites in Remote Installer

© Copyright 2001-2009 EMCO Software

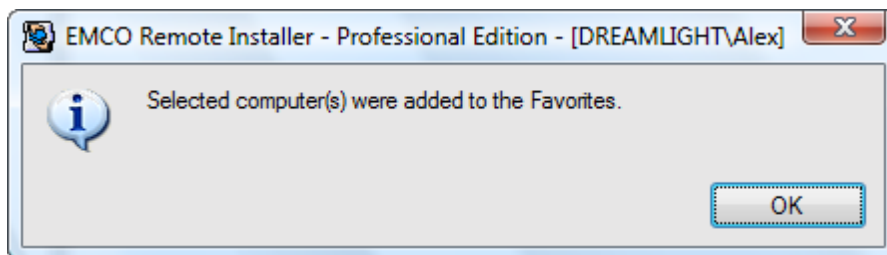
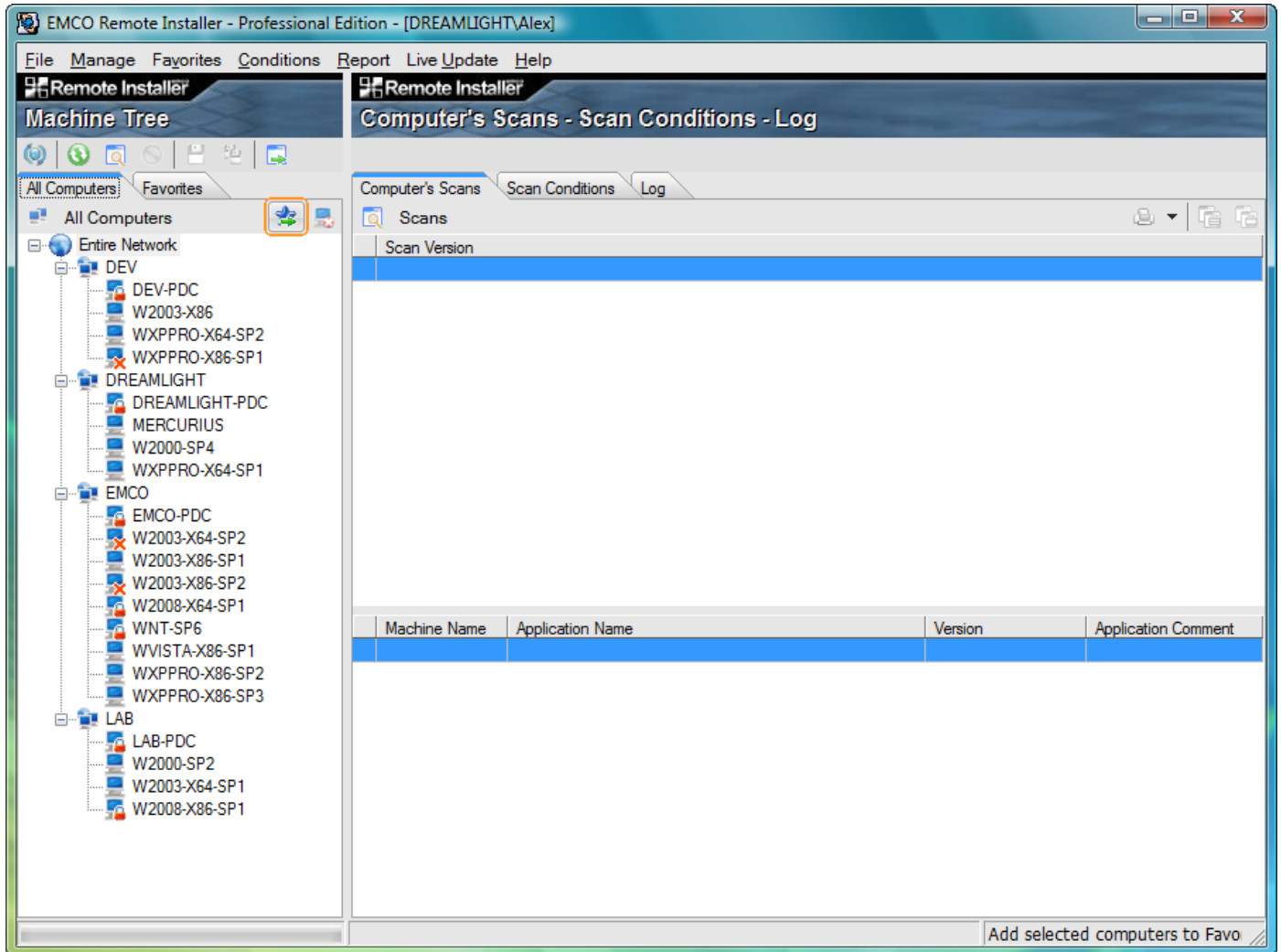
Add Machines to Favorites in Remote Installer

To add machines to favorites perform the following steps:

1. Expand the Entire Network node to see the list of available domains.
2. Expand the appropriate domain node to see the list of machines from this domain.
3. Select the machine you want to add to favorites from the machines list.



4. Click Add to Favorites button to add the selected machine to the favorites.



5. This will add your machines to the favorites. Now switch to the Favorites tab.
6. The added machine is now displayed in the machines list.

