



# Knowledgebase Article

---

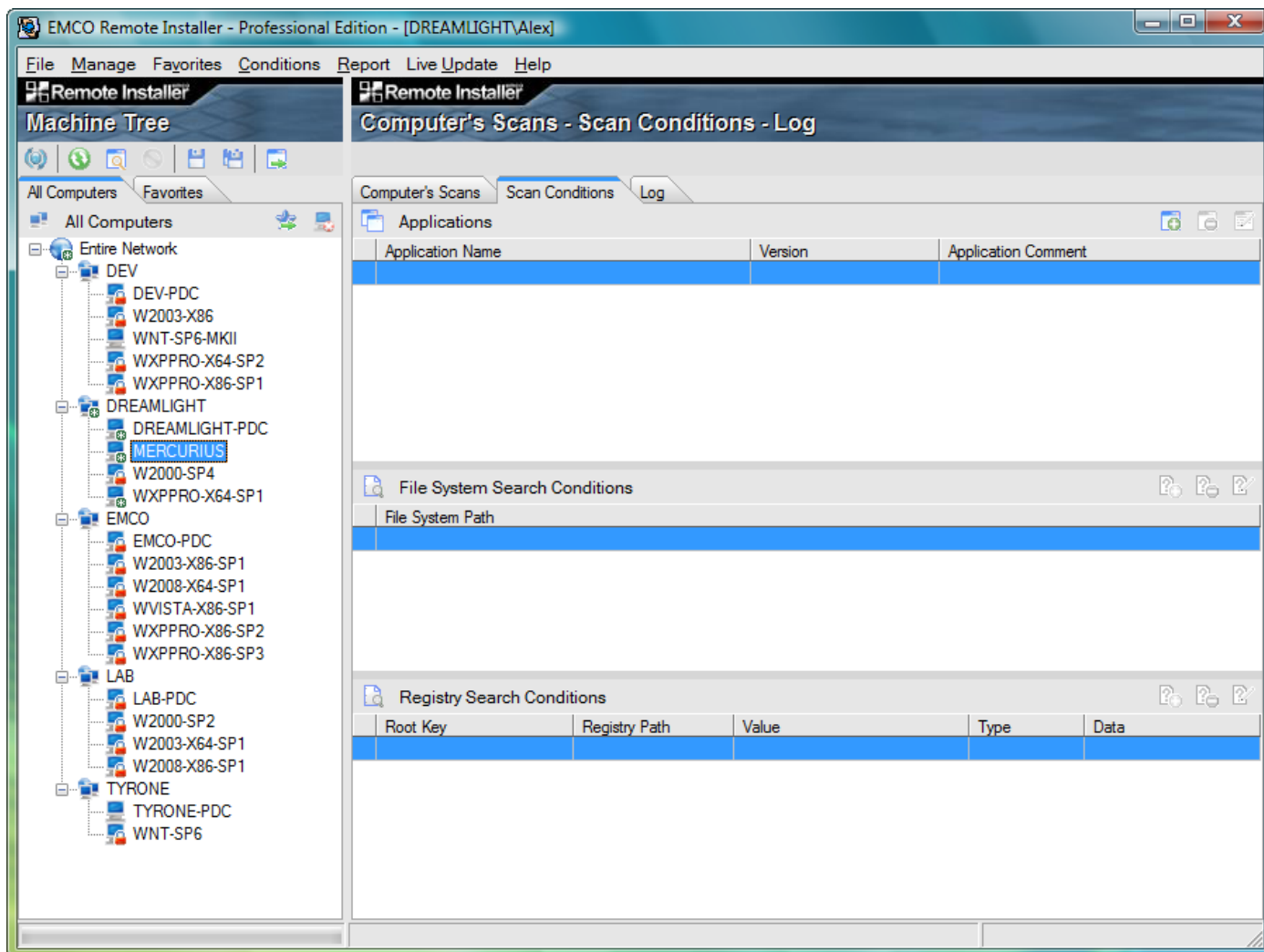
## Adding Applications in Custom Scan in Remote Installer

© Copyright 2001-2012 EMCO Software

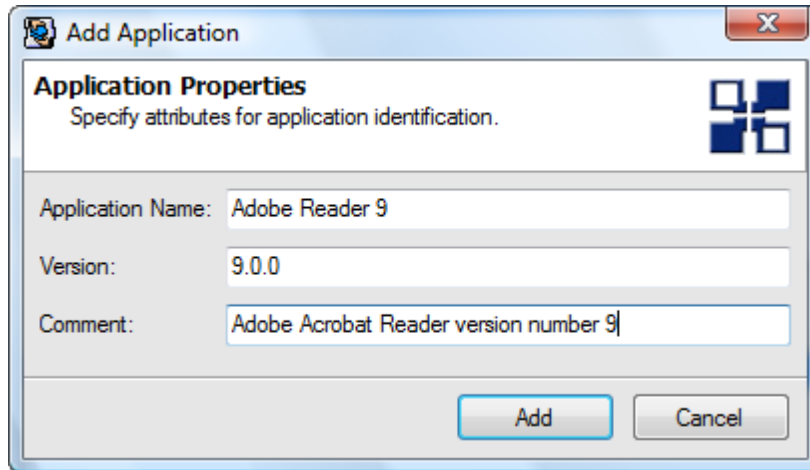
## Adding Applications in Custom Scan in Remote Installer

To perform Custom Scan operation on different machines on your network, perform the following steps:

1. Switch to the Scan Conditions tab.
2. Click Add Application icon shown on the right top corner of Scan Conditions tab.



3. Add Application dialog appears on the screen.
4. Type the required application name in the Application Name field.
5. Type the required version in the Version field.
6. If you want to add some comment just type it in Comments text field.



7. Press Add button to add the application.
8. The added application appears in the applications list.

