

Knowledgebase Article

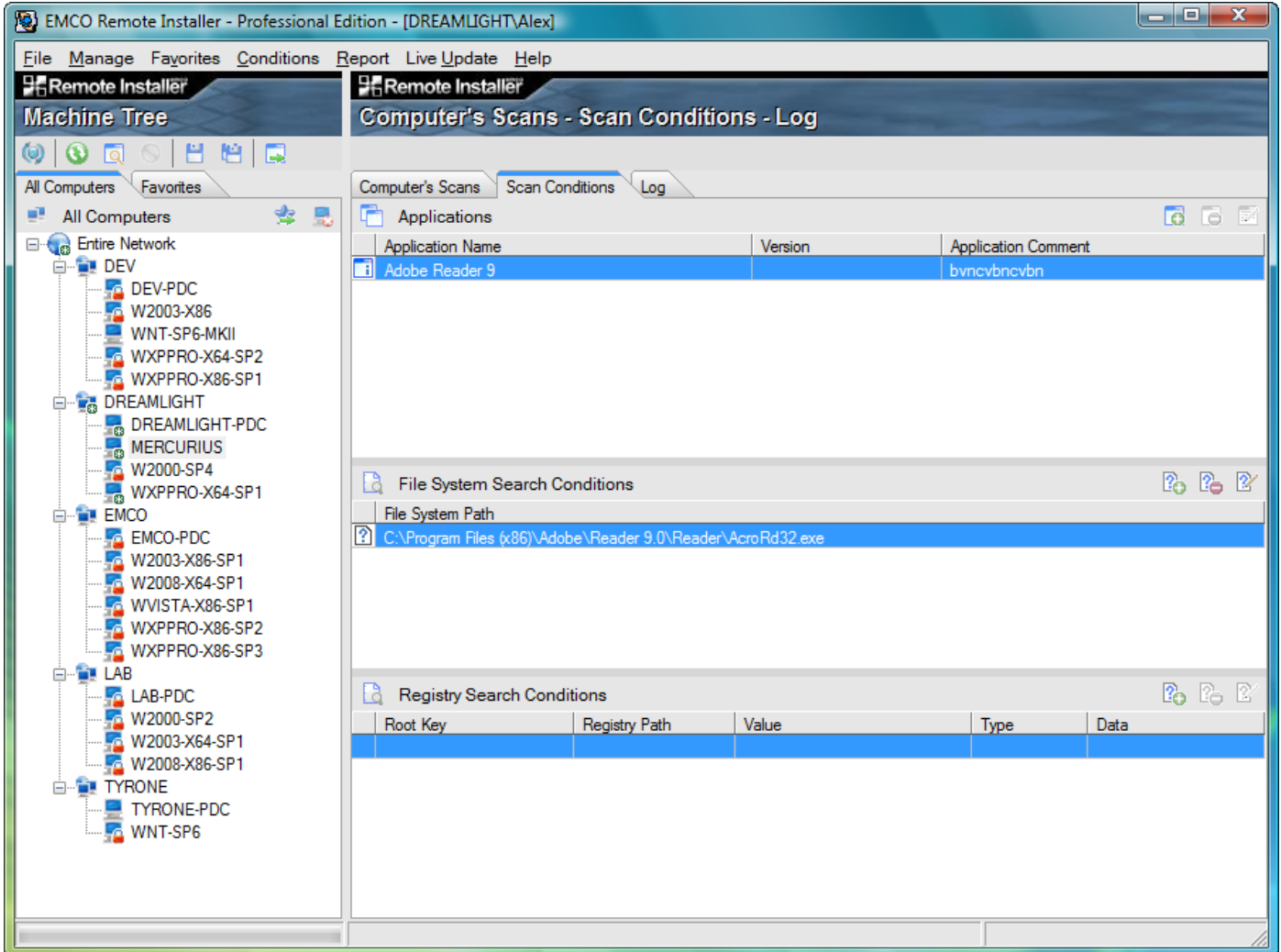
Adding Registry Search Conditions in Remote Installer

© Copyright 2001-2009 EMCO Software

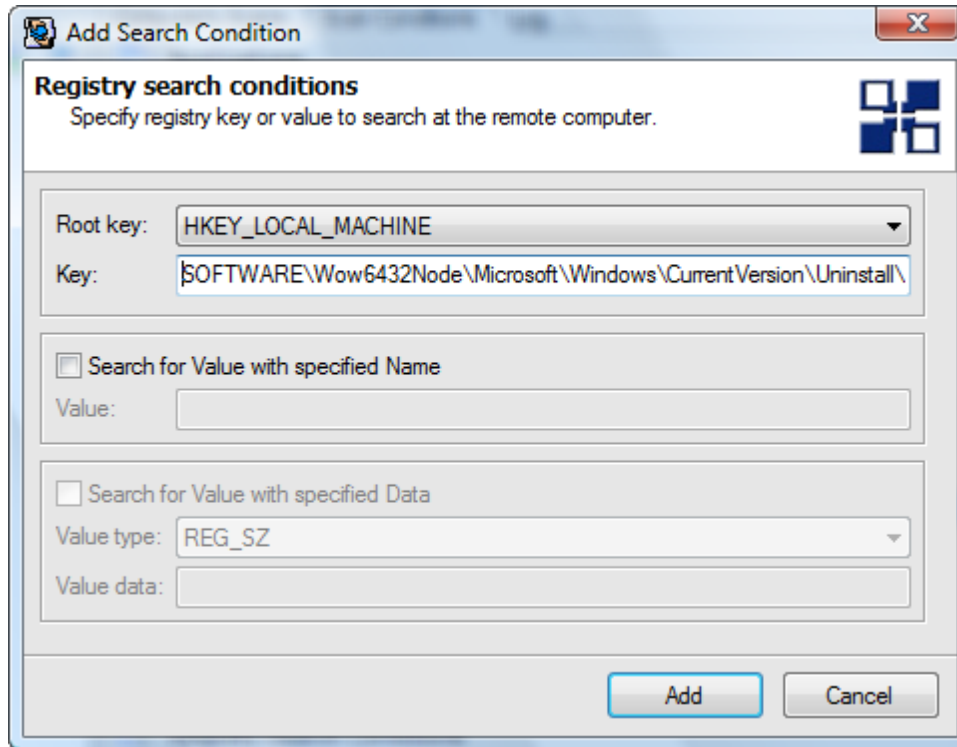
Adding Registry Search Conditions in Remote Installer

To Add Registry Search Conditions perform the following steps:

1. Click Add Condition button in the Registry Search Conditions tool bar.



2. Add Search Condition dialog appears on the screen.
3. Select the required registry hive and input the required registry key path.
4. To search the specific value name check Search for Value with specified Name option and input the name required to the Value field.
5. To search for the value with the specific data stored check Search for Value with specified Data option, select the data type from Value type drop-down and input the value data to the Value data field.



6. Press Add button.

7. The added registry condition appears in the Registry Search Conditions List.

The screenshot shows the EMCO Remote Installer interface. On the left is a 'Machine Tree' showing a network of computers. The main window is titled 'Computer's Scans - Scan Conditions - Log' and has three tabs: 'Computer's Scans', 'Scan Conditions', and 'Log'. The 'Scan Conditions' tab is active and contains two sections:

- File System Search Conditions:** A table with one entry:

File System Path
C:\Program Files (x86)\Adobe\Reader 9.0\Reader\AcroRd32.exe
- Registry Search Conditions:** A table with five columns: Root Key, Registry Path, Value, Type, and Data. It contains one entry:

Root Key	Registry Path	Value	Type	Data
HKEY_LOCAL_MACHINE	SOFTWARE\Wow...		REG_SZ	