

# Knowledgebase Article

---

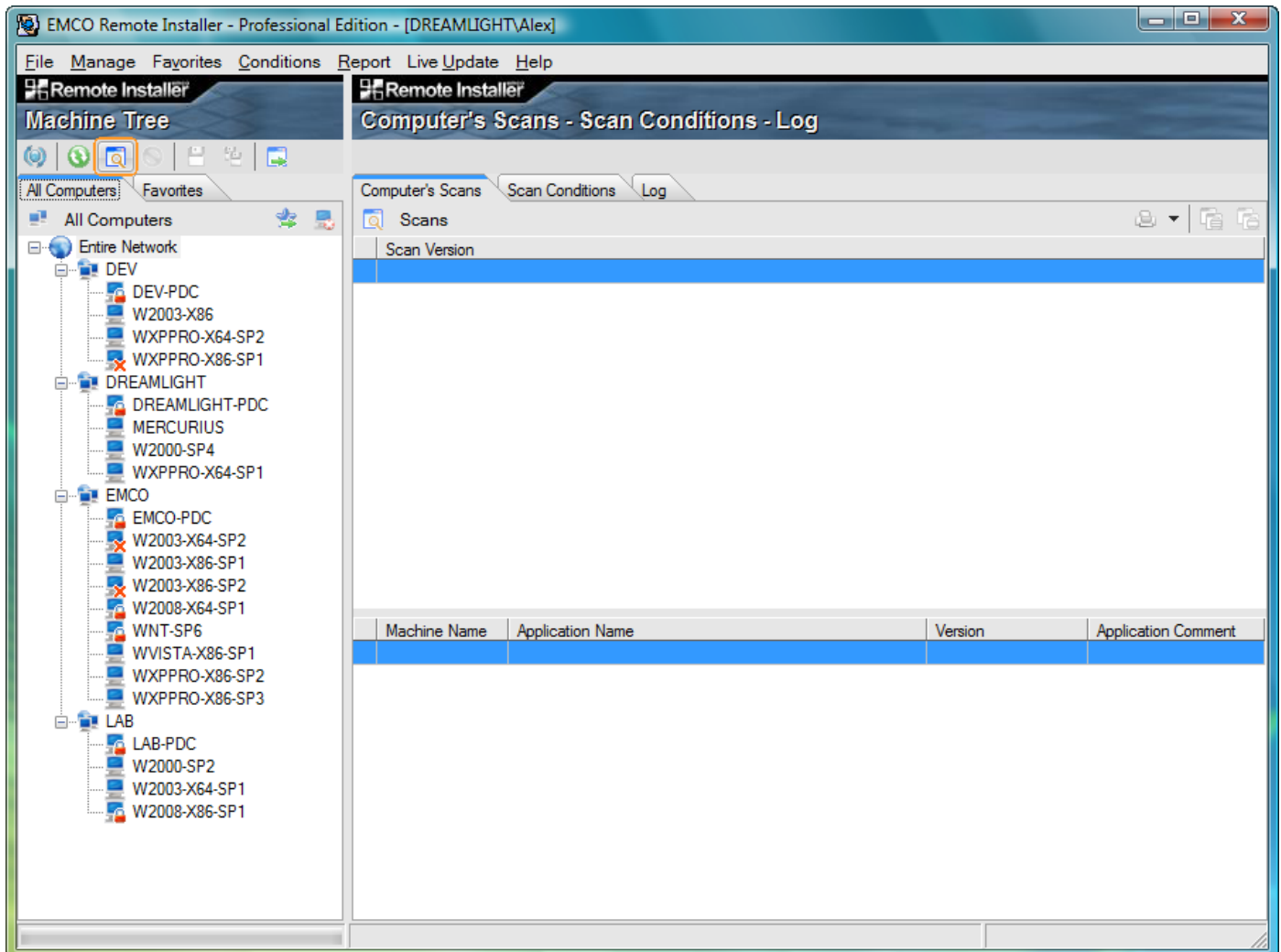
## One Click Scan in Remote Installer

© Copyright 2001-2009 EMCO Software

## One Click Scan in Remote Installer

**To perform One Click Scan operation on your network, perform the following steps:**

1. Select the Entire Network node and click Scan Applications button in the tool bar located over the Machines Tree.



2. The scanning process will now begin.
3. When the scanning process is finished all Machines in the Machine Tree will have the information on the installed applications.
4. To review the information on all installed Applications over your network select the Entire Network node and switch to Computer's Scans tab.
5. To review the information on all installed Applications over the specific domain select it in the Machine Tree and switch to Computer's Scans tab.
6. To review the information on all installed Applications over the specific machine select it in the Machine Tree and switch to Computer's Scans tab.

