

# Knowledgebase Article

---

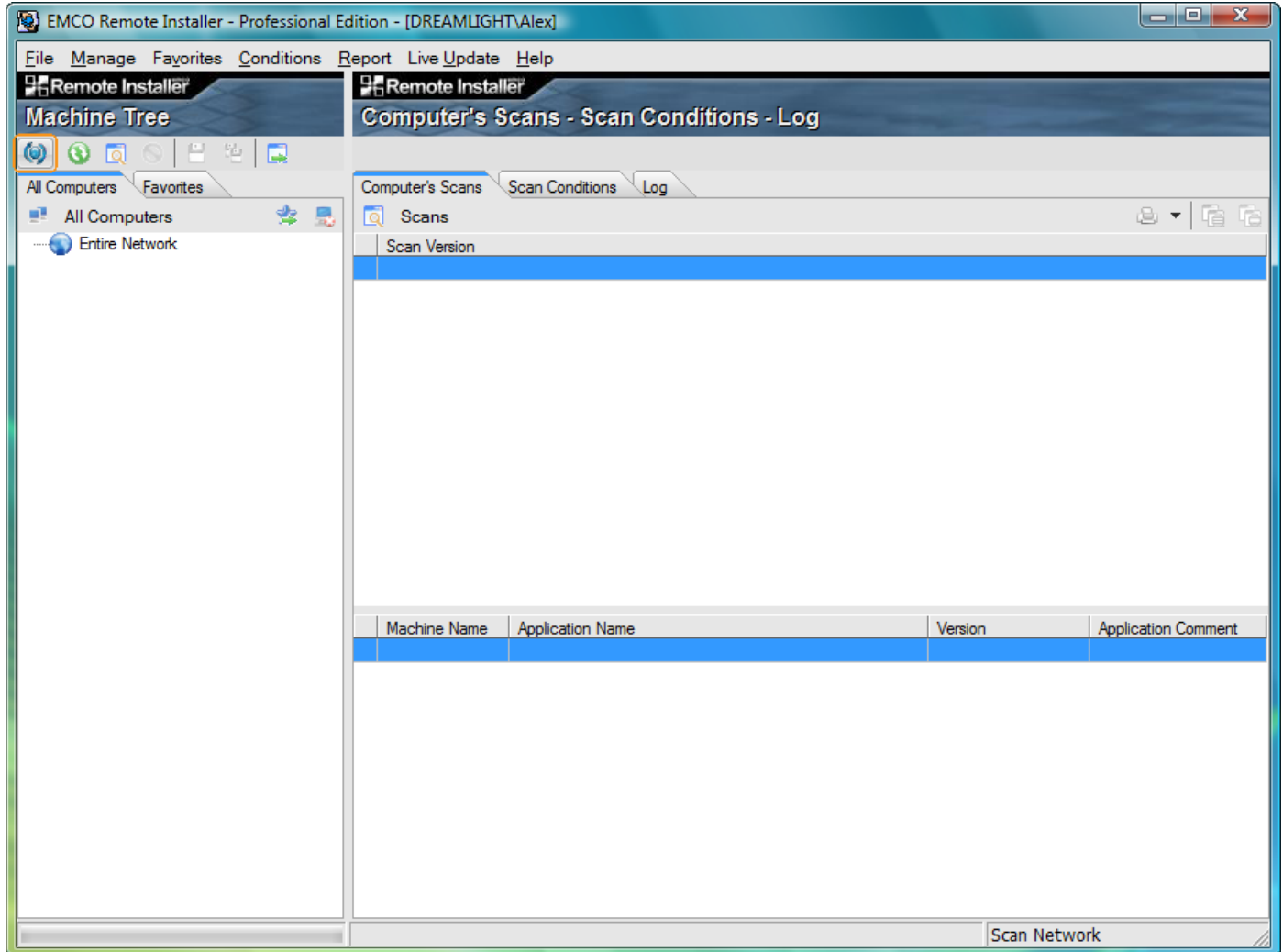
## Scan LAN for available machines in Remote Installer

© Copyright 2001-2012 EMCO Software

## Scan LAN for available machines in Remote Installer

To scan your network for all available machines perform the following steps:

1. Click Scan Network button in the tool bar located over the Machines Tree.



2. The scanning process will now begin.
3. When the scanning process finishes the scanned machines will be available in the machines tree.
4. Expand the Entire Network node to see the list of available domains.
5. Expand the appropriate domain node to see the list of machines from this domain.

