

Knowledgebase Article

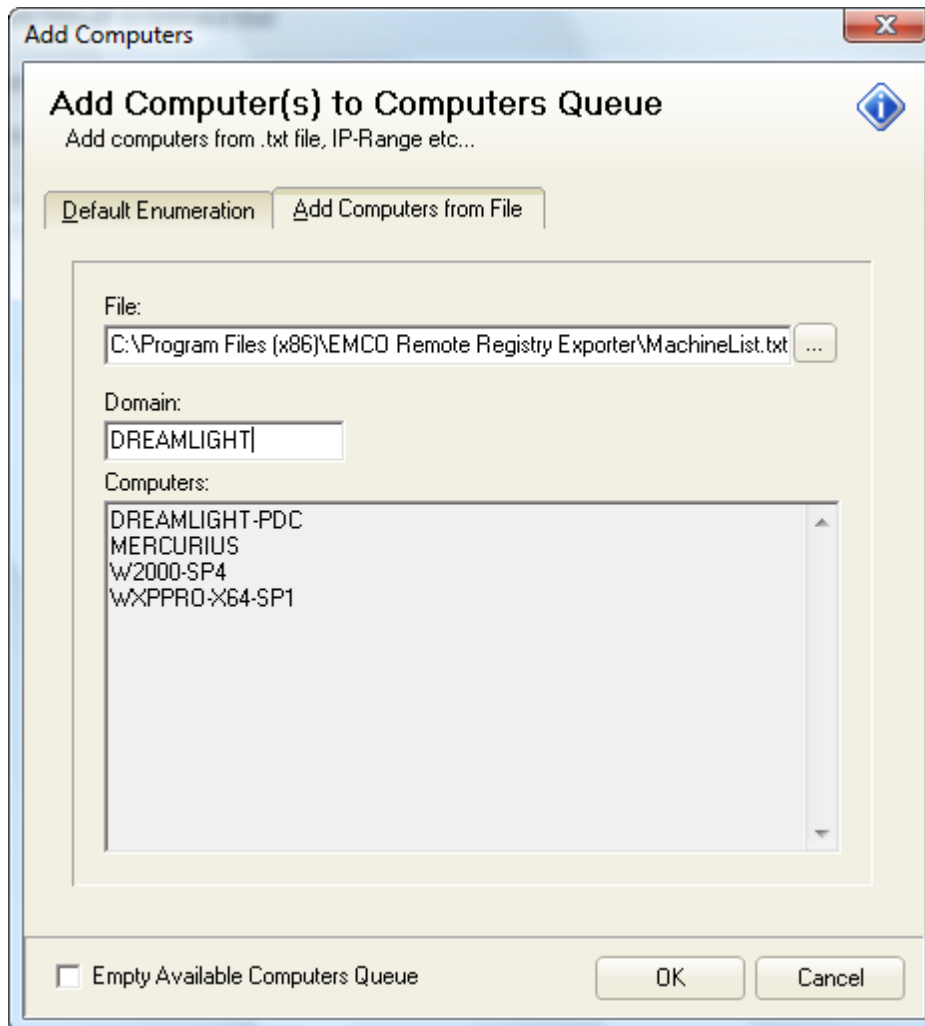
Add Computers from File in EMCO Remote Registry Exporter

© Copyright 2001-2009 EMCO Software

Add Computers from File in EMCO Remote Registry Exporter

To Add Computers from File in EMCO Remote Registry Exporter perform the following steps:

1. Switch to Available Computers Tab.
2. Click Add Computers icon shown on the toolbar.
3. Add Computers dialog box will appear on the screen.
4. Switch to Add Computers from File tab.
5. Select your required file from which you want to import the machines.



6. Type in your required domain name in the Domain textbox.
7. Click Ok button.

8. The scanned machines will appear in the machines queue.

