

Knowledgebase Article

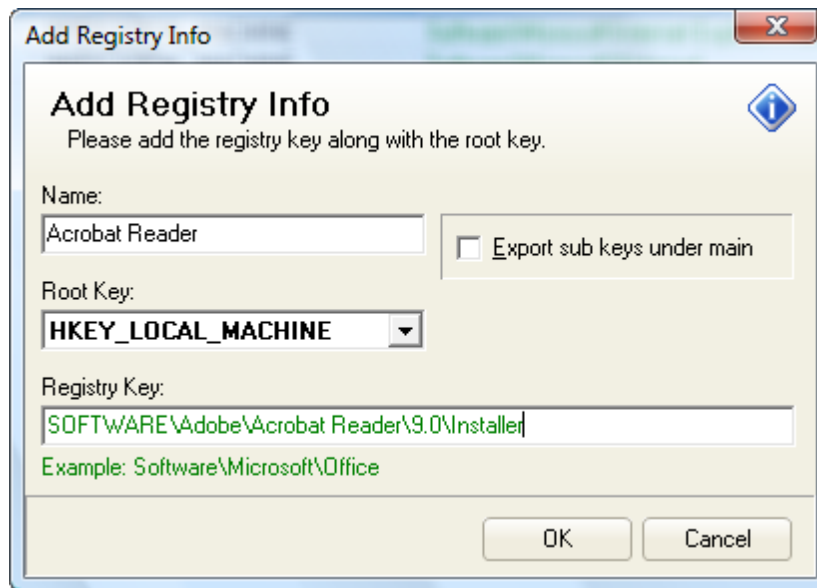
Add Registry Info in EMCO Remote Registry Exporter

© Copyright 2001-2009 EMCO Software

Add Registry Info in EMCO Remote Registry Exporter

To Add Registry Information in EMCO Remote Registry Exporter, perform the following steps:

1. Switch to Registry Info Tab.
2. Click Add Registry Info icon shown on the toolbar..
3. Add Registry Info dialog box will appear on the screen.
4. Type in the name for the registry info in the Name textbox.
5. Select your required Root Key from the dropdown list.
6. Type in your required registry key in the Registry Key textbox.



7. Click Ok button.

8. The added registry info will appear in the registry info list.

