

Knowledgebase Article

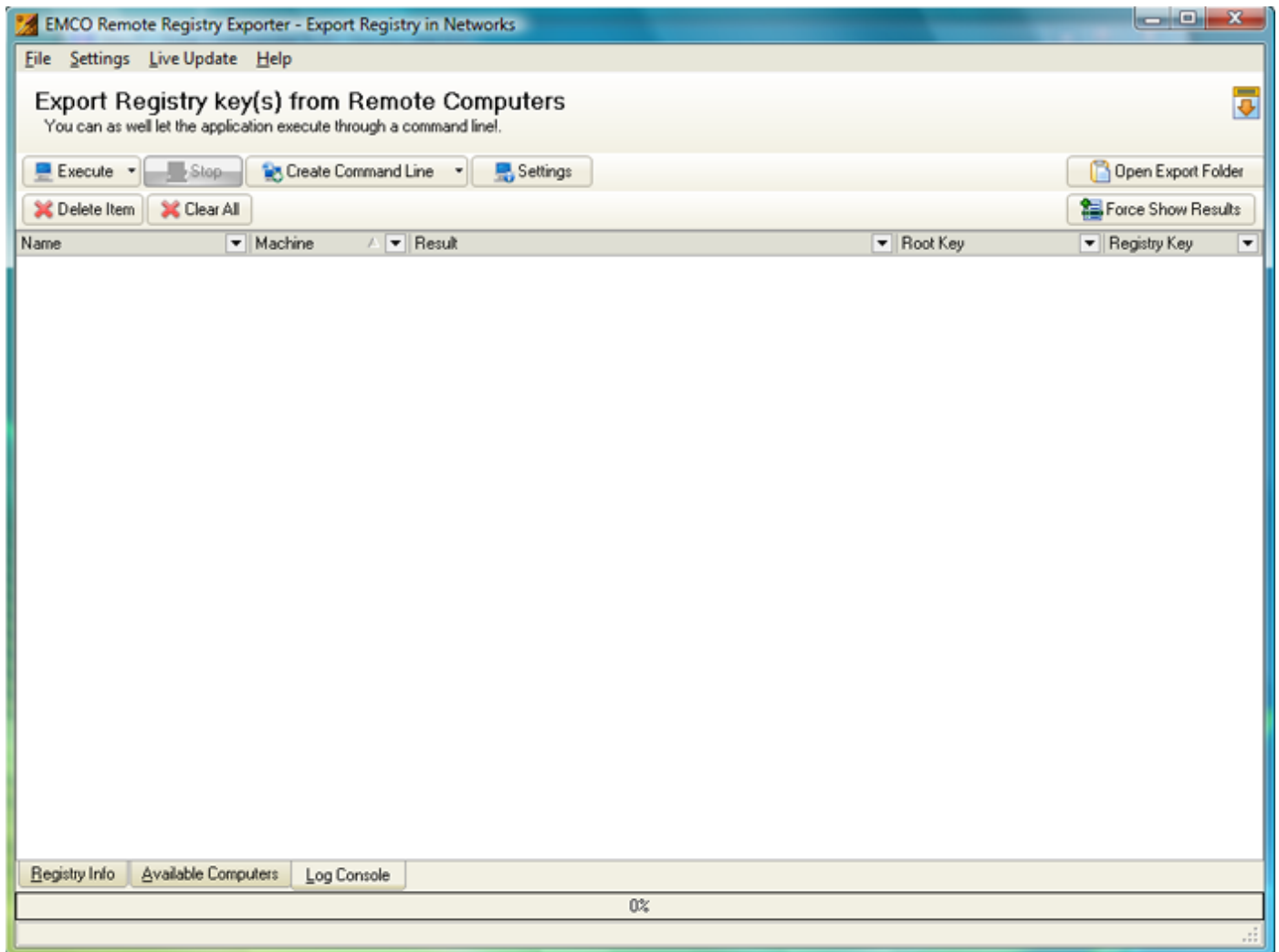
Check Log Console in EMCO Remote Registry Exporter

© Copyright 2001-2009 EMCO Software

Check Log Console in EMCO Remote Registry Exporter

To Check Log Console in EMCO Remote Registry Exporter performs the following steps:

1. After executing Registry Export operation on your selected machines you can check Log Console to see the results.
2. Switch to Log Console Tab.



3. Expand a node to see the scan results.

The screenshot shows the EMCO Remote Registry Exporter application window. The title bar reads "EMCO Remote Registry Exporter - Export Registry in Networks". The menu bar includes "File", "Settings", "Live Update", and "Help". The main area is titled "Export Registry key(s) from Remote Computers" and includes a sub-note: "You can as well let the application execute through a command line." Below this are several buttons: "Execute", "Stop", "Create Command Line", "Settings", "Delete Item", "Clear All", "Open Export Folder", and "Force Show Results".

The main data area is a table with columns: "Name", "Machine", "Result", "Root Key", and "Registry Key". The table is filtered by "Date : 3/4/2009". The results are as follows:

Name	Machine	Result	Root Key	Registry Key
Notepad	DREAMLIGHT-PDC	Registry Key does not Exist	HKEY_LOCAL_MACHINE	Software\Microsoft\Nc
Acrobat Reader	DREAMLIGHT-PDC	No Interactive Logon - Loading last logged in user registry hive before p	HKEY_LOCAL_MACHINE	SOFTWARE\Adobe\A
IE Toolbar	DREAMLIGHT-PDC	Registry Key does not Exist	HKEY_LOCAL_MACHINE	Software\Microsoft\Int
Acrobat Reader	DREAMLIGHT-PDC	Registry Key does not Exist	HKEY_LOCAL_MACHINE	SOFTWARE\Adobe\A
Acrobat Reader	MERCURIUS	Registry Exported	HKEY_LOCAL_MACHINE	SOFTWARE\Adobe\A
Acrobat Reader	MERCURIUS	Registry Exported	HKEY_LOCAL_MACHINE	SOFTWARE\Adobe\A
Notepad	MERCURIUS	Registry Exported	HKEY_LOCAL_MACHINE	Software\Microsoft\Nc
IE Toolbar	MERCURIUS	Registry Exported	HKEY_LOCAL_MACHINE	Software\Microsoft\Int
Notepad	W2000-SP4	Registry Key does not Exist	HKEY_LOCAL_MACHINE	Software\Microsoft\Nc
Notepad	W2000-SP4	No Interactive Logon - Loading last logged in user registry hive before p	HKEY_LOCAL_MACHINE	Software\Microsoft\Nc
IE Toolbar	W2000-SP4	Registry Key does not Exist	HKEY_LOCAL_MACHINE	Software\Microsoft\Int
Acrobat Reader	W2000-SP4	Registry Key does not Exist	HKEY_LOCAL_MACHINE	SOFTWARE\Adobe\A
Acrobat Reader	w\XPPRO-X64-SP1	Registry Exported	HKEY_LOCAL_MACHINE	SOFTWARE\Adobe\A
Notepad	w\XPPRO-X64-SP1	Registry Key does not Exist	HKEY_LOCAL_MACHINE	Software\Microsoft\Nc
IE Toolbar	w\XPPRO-X64-SP1	Registry Exported	HKEY_LOCAL_MACHINE	Software\Microsoft\Int
Notepad	w\XPPRO-X64-SP1	No Interactive Logon - Loading last logged in user registry hive before p	HKEY_LOCAL_MACHINE	Software\Microsoft\Nc

At the bottom of the window, there are tabs for "Registry Info", "Available Computers", and "Log Console". The "Log Console" tab is active, showing a progress bar at 0%.