



Knowledgebase Article

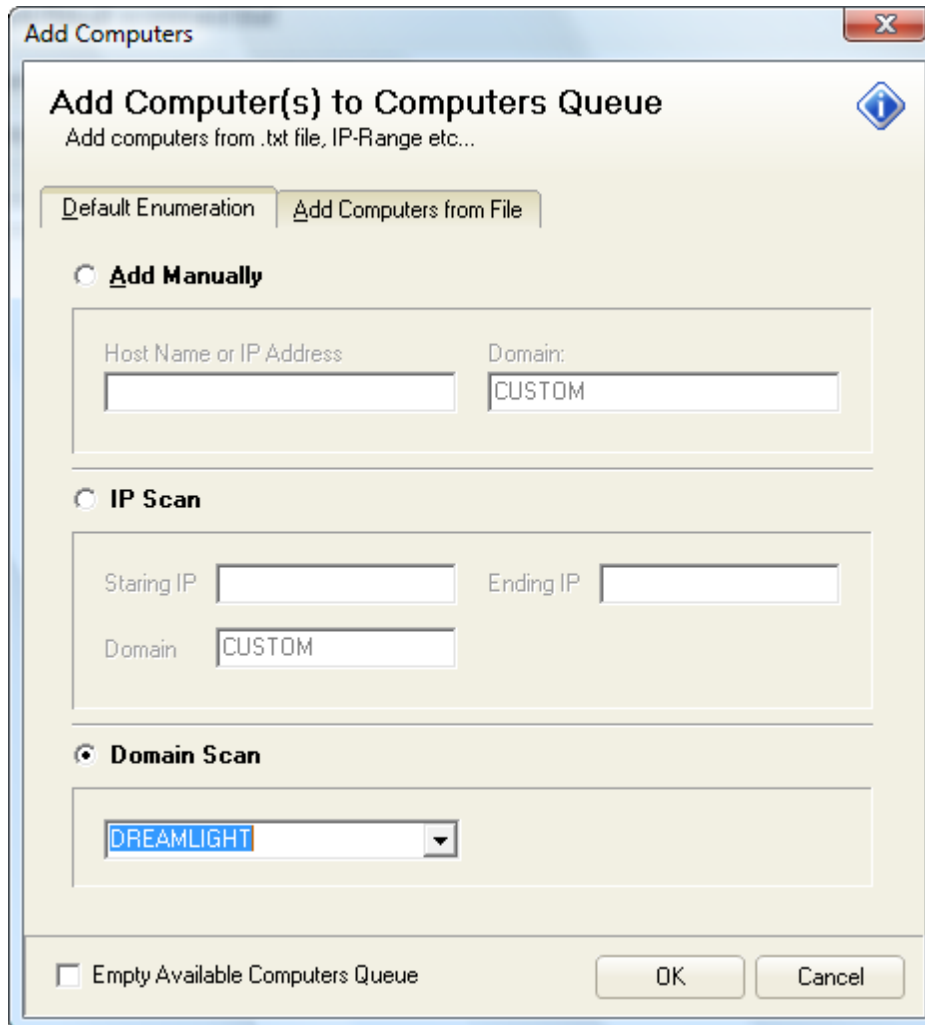
Domain Scan in EMCO Remote Registry Exporter

© Copyright 2001-2009 EMCO Software

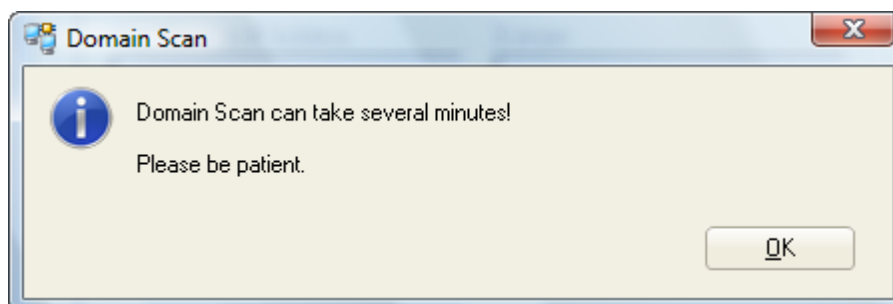
Domain Scan in EMCO Remote Registry Exporter

To perform Domain Scan in EMCO Remote Registry Exporter follow the steps shown below:

1. Switch to Available Computers Tab.
2. Click Add Computers icon shown on the toolbar.
3. Add Computers dialog box will appear on the screen.
4. Select Domain Scan option.



5. You will be informed that the scanning process will now begin.



6. Click Ok button.
7. When the scanning process finishes, select your required domain from the Domains dropdown list.
8. Click Ok button.

9. The scanned machines will appear in the machines queue.

