

Knowledgebase Article

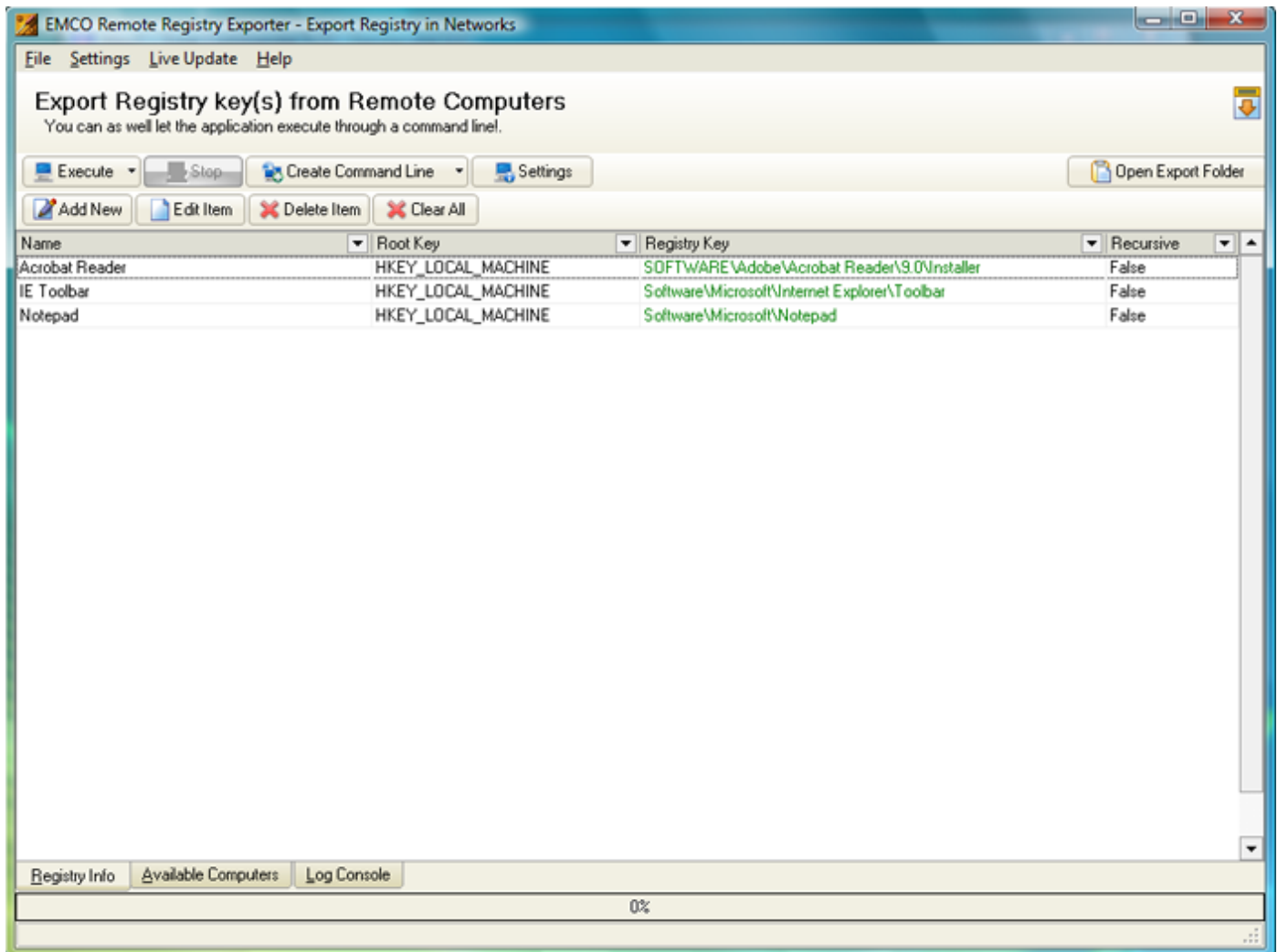
Export Registry Keys in EMCO Remote Registry Exporter

© Copyright 2001-2009 EMCO Software

Export Registry Keys in EMCO Remote Registry Exporter

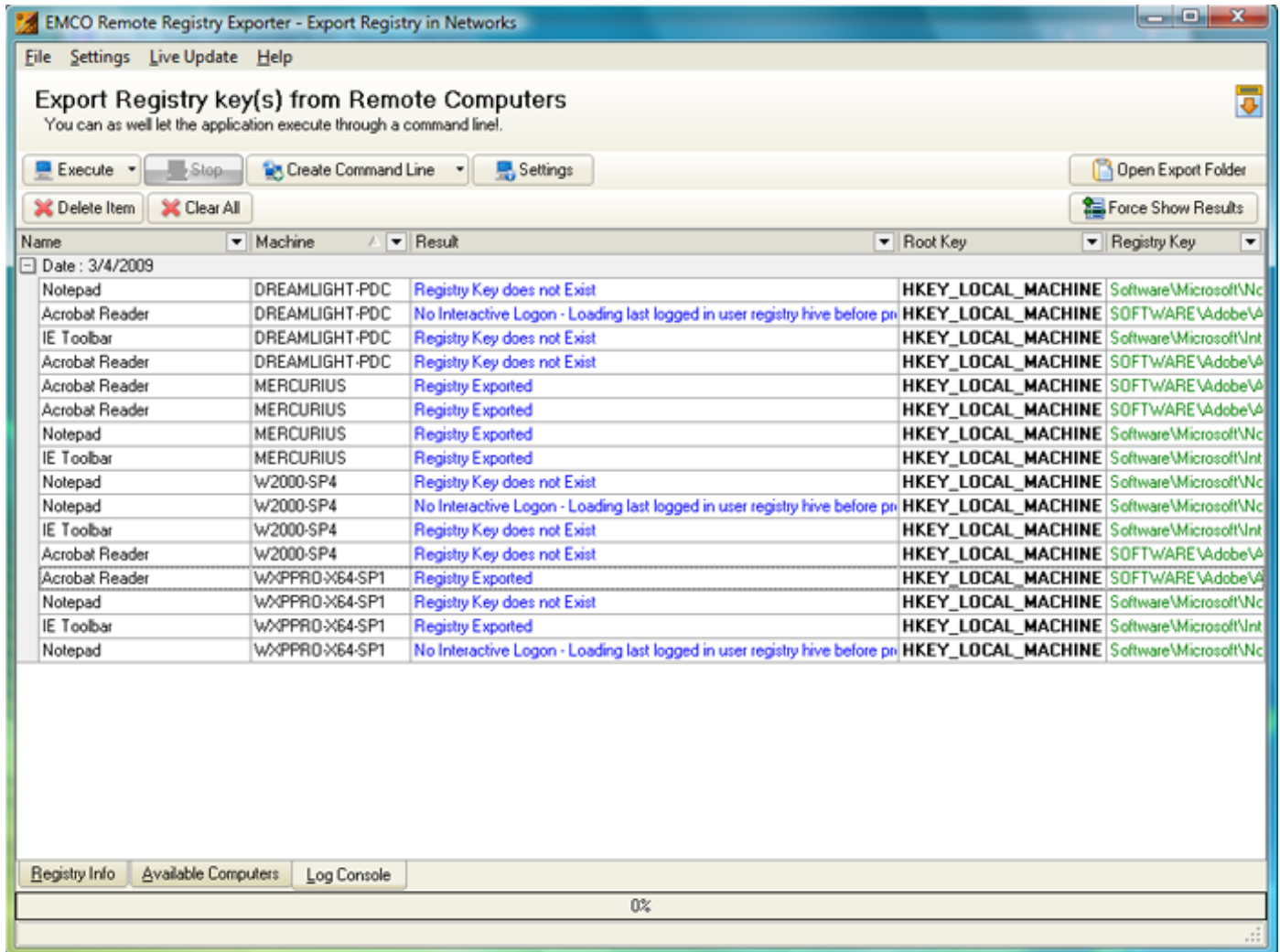
To Export Registry Keys in EMCO Remote Registry Exporter perform the following steps:

1. Switch to Registry Info Tab.
2. Add your required registry keys information as mentioned in the previous section.



3. Switch to Available Computers Tab.
4. Press the Ctrl key and select the machines that you want to process.
5. Click Execute button.

6. Switch to Log Console tab to see the results.
7. Expand a node to see its results.



EMCO Remote Registry Exporter - Export Registry in Networks

File Settings Live Update Help

Export Registry key(s) from Remote Computers
You can as well let the application execute through a command line.

Execute Stop Create Command Line Settings Open Export Folder
Delete Item Clear All Force Show Results

Name	Machine	Result	Root Key	Registry Key
Date : 3/4/2009				
Notepad	DREAMLIGHT-PDC	Registry Key does not Exist	HKEY_LOCAL_MACHINE	Software\Microsoft\Nc
Acrobat Reader	DREAMLIGHT-PDC	No Interactive Logon - Loading last logged in user registry hive before pr	HKEY_LOCAL_MACHINE	SOFTWARE\Adobe\A
IE Toolbar	DREAMLIGHT-PDC	Registry Key does not Exist	HKEY_LOCAL_MACHINE	Software\Microsoft\Int
Acrobat Reader	DREAMLIGHT-PDC	Registry Key does not Exist	HKEY_LOCAL_MACHINE	SOFTWARE\Adobe\A
Acrobat Reader	MERCURIUS	Registry Exported	HKEY_LOCAL_MACHINE	SOFTWARE\Adobe\A
Acrobat Reader	MERCURIUS	Registry Exported	HKEY_LOCAL_MACHINE	SOFTWARE\Adobe\A
Notepad	MERCURIUS	Registry Exported	HKEY_LOCAL_MACHINE	Software\Microsoft\Nc
IE Toolbar	MERCURIUS	Registry Exported	HKEY_LOCAL_MACHINE	Software\Microsoft\Int
Notepad	W2000-SP4	Registry Key does not Exist	HKEY_LOCAL_MACHINE	Software\Microsoft\Nc
Notepad	W2000-SP4	No Interactive Logon - Loading last logged in user registry hive before pr	HKEY_LOCAL_MACHINE	Software\Microsoft\Nc
IE Toolbar	W2000-SP4	Registry Key does not Exist	HKEY_LOCAL_MACHINE	Software\Microsoft\Int
Acrobat Reader	W2000-SP4	Registry Key does not Exist	HKEY_LOCAL_MACHINE	SOFTWARE\Adobe\A
Acrobat Reader	WXPFR0-X64-SP1	Registry Exported	HKEY_LOCAL_MACHINE	SOFTWARE\Adobe\A
Notepad	WXPFR0-X64-SP1	Registry Key does not Exist	HKEY_LOCAL_MACHINE	Software\Microsoft\Nc
IE Toolbar	WXPFR0-X64-SP1	Registry Exported	HKEY_LOCAL_MACHINE	Software\Microsoft\Int
Notepad	WXPFR0-X64-SP1	No Interactive Logon - Loading last logged in user registry hive before pr	HKEY_LOCAL_MACHINE	Software\Microsoft\Nc

Registry Info Available Computers Log Console

0%