

Knowledgebase Article

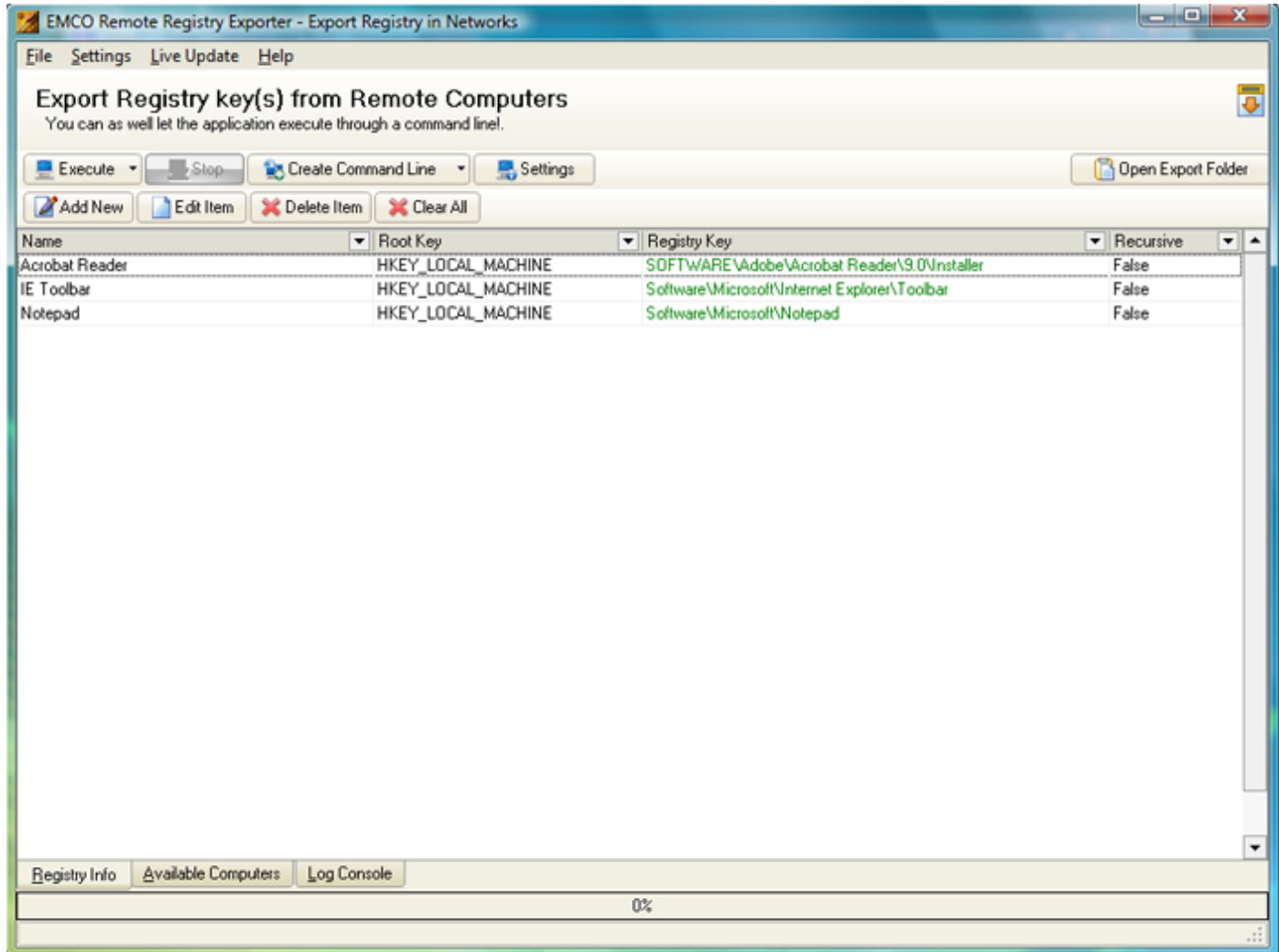
Using EMCO Remote Registry Exporter via Command Line

© Copyright 2001-2009 EMCO Software

Using EMCO Remote Registry Exporter via Command Line

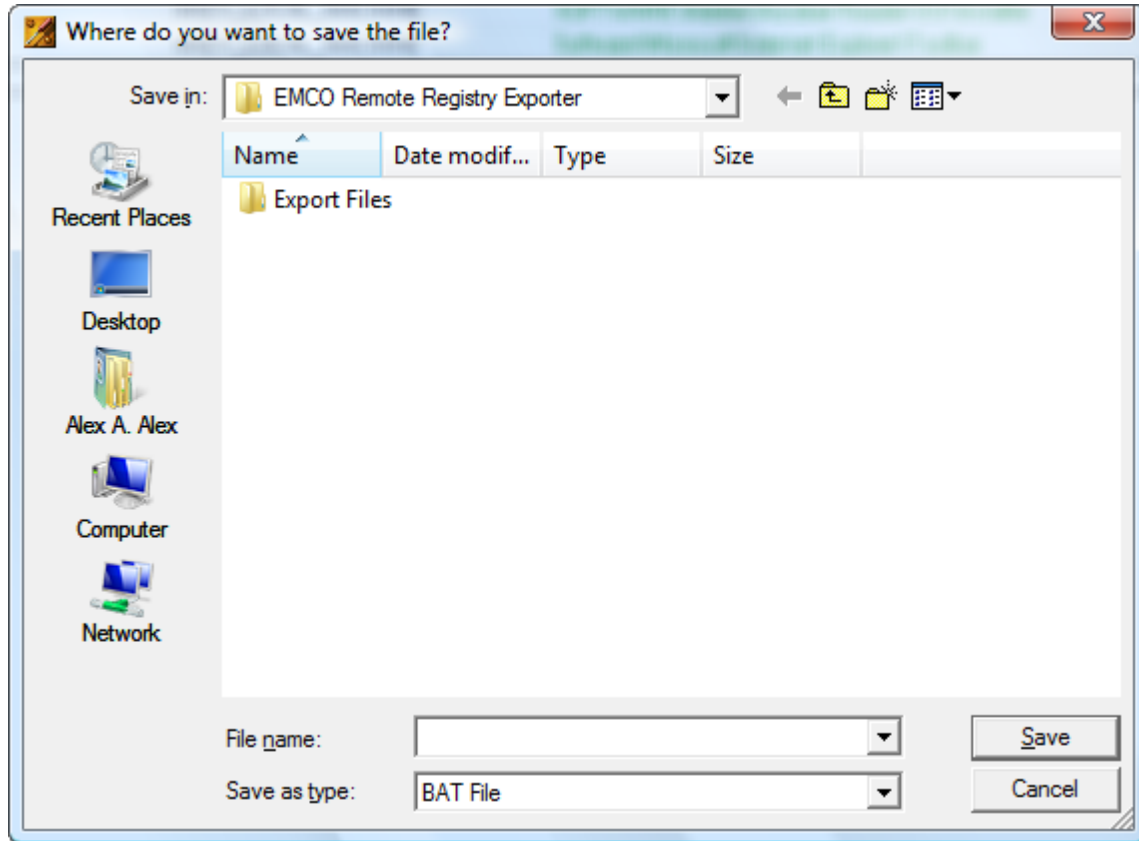
To use EMCO Remote Registry Exporter via Command Line perform the following steps:

1. Click down arrow shown on the right of the Create Command Line button available on the toolbar.



2. Select Create Command Line to use with Task Scheduler etc. menu item from the popup menu.

3. File Save dialog box will appear on the screen.



4. Select the location where you want to save the file.
5. Type in the name of the file and click Save button.

This will save your file on your specified location. You can now schedule this file to be executed automatically on the specified time using Task Scheduler. Or you can also manually execute this file via command line.