

# Knowledgebase Article

---

## Drag and drop Operations in Remote Registry Merge

© Copyright 2001-2009 EMCO Software

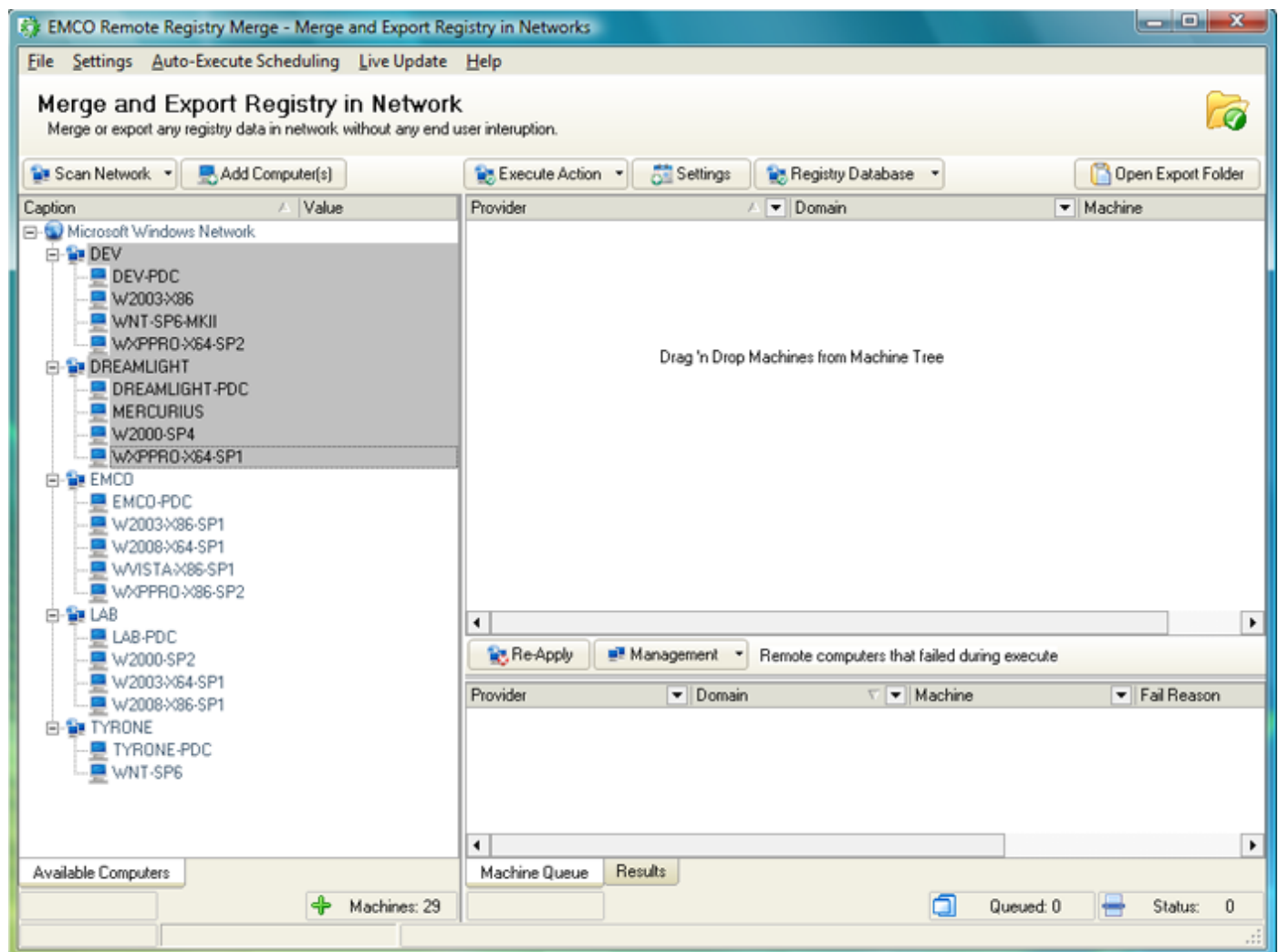
## Drag and drop Operations in Remote Registry Merge

Drag-and-drop operations include moving and linking selected objects by dragging them from one location and dropping them over another. These operations provide a convenient and intuitive way to perform many tasks using direct manipulation.

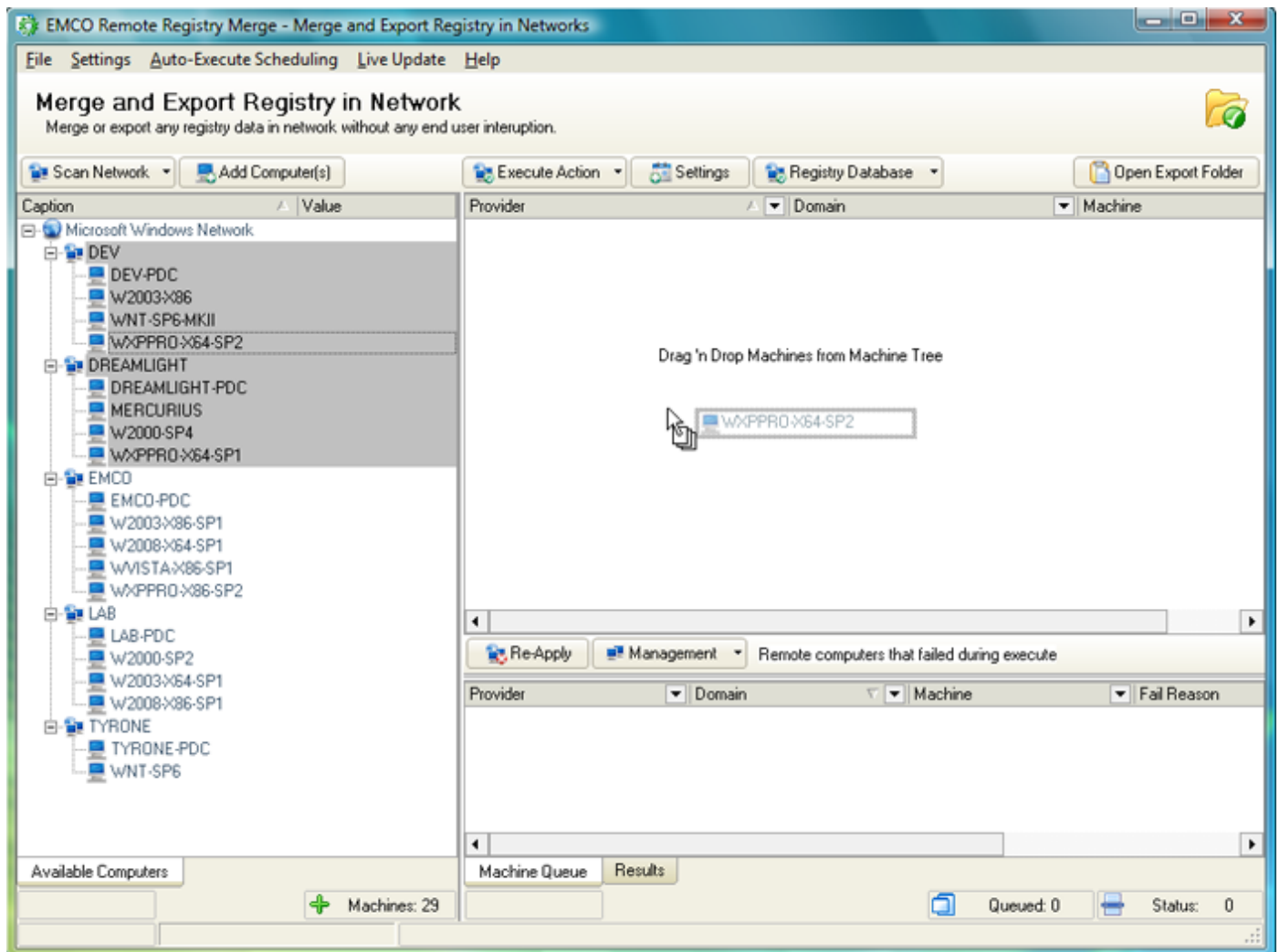
Users can Drag-and-drop required machines or domains from the Available Machines Tab to the Machine Queue tab.

**To Drag a machine from the Available Machine Tab and Drop it to the Machine Queue perform the following steps:**

1. Press the Ctrl key and keep it pressed and click the machines you want to select from the Available Machine Tab shown on the left.



- Click any of the selected machines, keep the left mouse button down and move mouse to the Machine Queue Tab shown on the right and release the mouse.



3. The selected machines will appear in the Machines Queue.

