

Knowledgebase Article

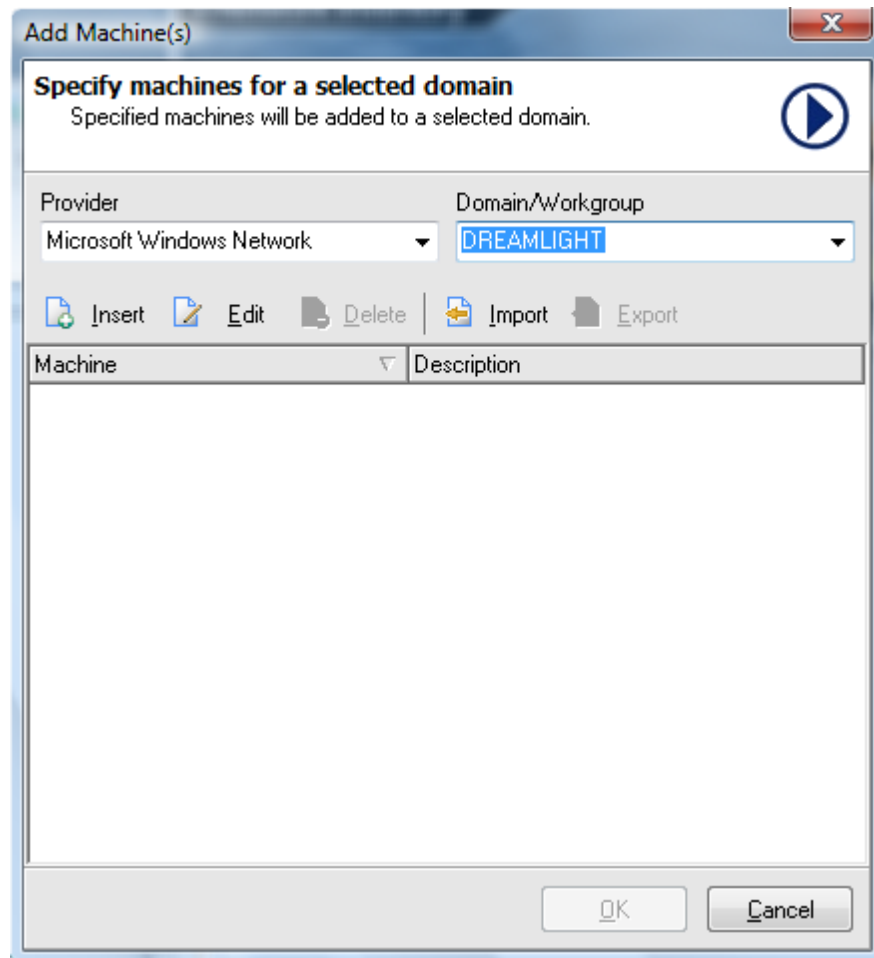
Adding Machines Manually in NI

© Copyright 2001-2012 EMCO Software

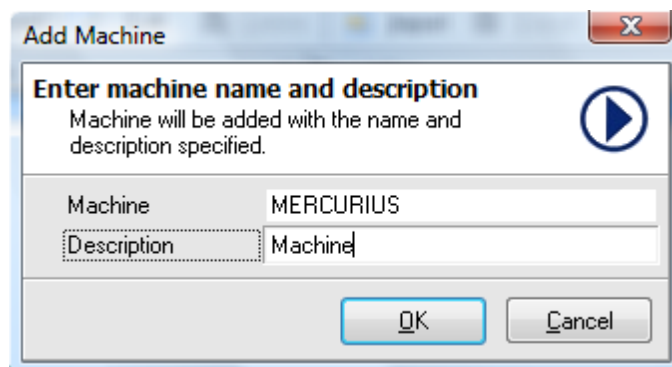
Adding Machines Manually in NI

To add machines manually in EMCO Network Inventory perform the following steps:

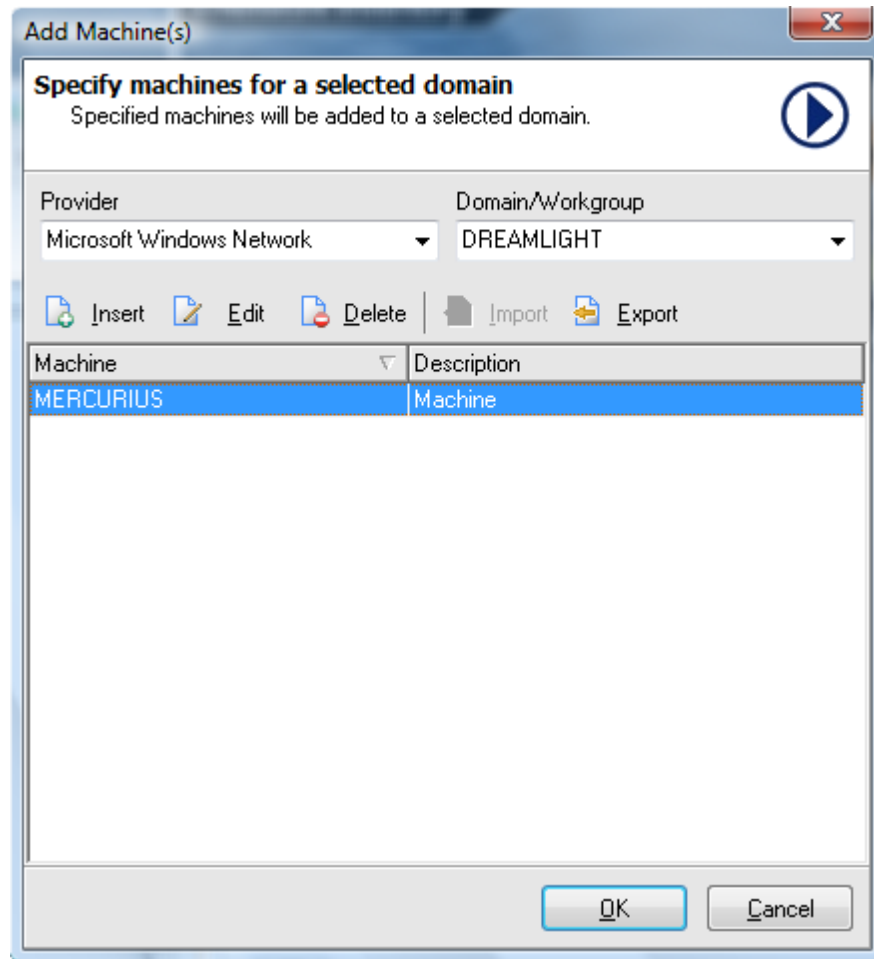
1. Click **Add Machine** icon available in **Manage** Tab.
2. **Add Machines** dialog appears on the screen.
3. Select the network provider from the **Provider** drop-down list.
4. Select the required domain from the **Domain** drop-down list.
5. Click **Insert** button.



6. **Machine Details** dialog appears on the screen.
7. Type the name of the machine in the **Machine** field.
8. Type its description in the **Description** field.



9. Click **Ok** button.



10. Click **Ok** button.

11. This will add your machine to the machines list.

