

Knowledgebase Article

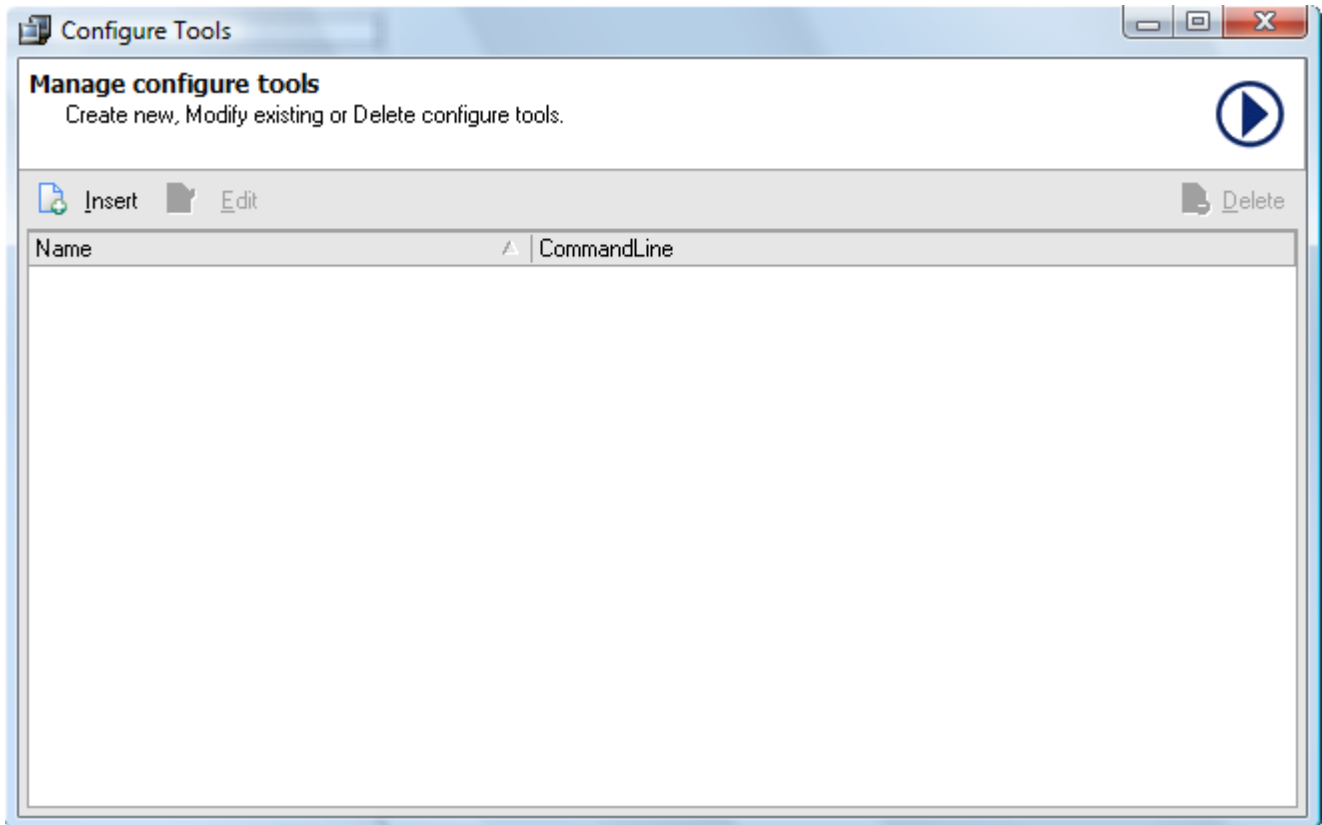
Configuring Tools in NI

© Copyright 2001-2012 EMCO Software

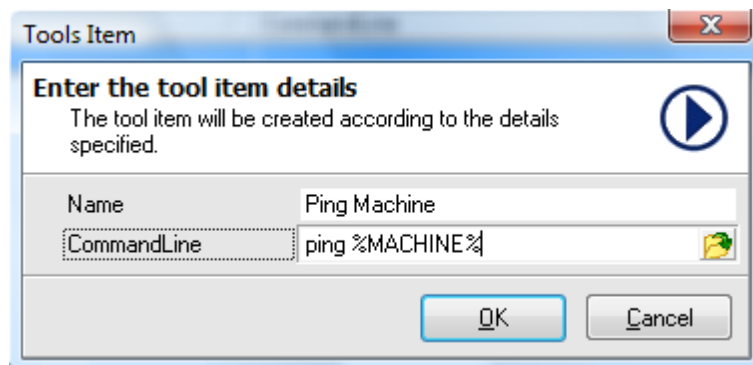
Configuring Tools in NI

To configure tools in EMCO Network Inventory 5 perform the following steps:

1. Select **Configure Tools** menu item under **Options** menu.
2. **Configure Tools** dialog appears on the screen.



3. Click **Insert** button to create a new tool.
4. **Tools Item** dialog box will appear on the screen.
5. Type in the tools name in the **Name** field.
6. Type in the Command %Machine% in the **CommandLine** textbox where %Machine% will pass the machine name as a parameter for this command.



7. Click **Ok** button.

- The added tool will appear in the tools list.

