

Knowledgebase Article

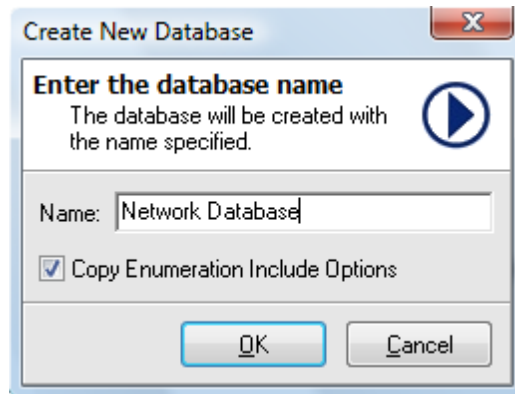
Creating New Database in Network Inventory

© Copyright 2001-2012 EMCO Software

Creating New Database in Network Inventory

To create a new database in EMCO Network Inventory, perform the following steps:

1. Select **New Database** menu item under File menu.
2. **New Database** dialog appears on the screen.
3. Type in the database name in the Database field.
4. To copy all existing enumeration Include Options to the new database check Copy Enumeration Include Options check box.



5. Click **OK** button.
6. This will create a New database.