

# Knowledgebase Article

---

## How to Custom Scan Windows Media Player Version in NI

© Copyright 2001-2012 EMCO Software

## How to Custom Scan Windows Media Player Version in NI

This tutorial will highlight the power of EMCO Network Inventory Custom Scan Criteria.

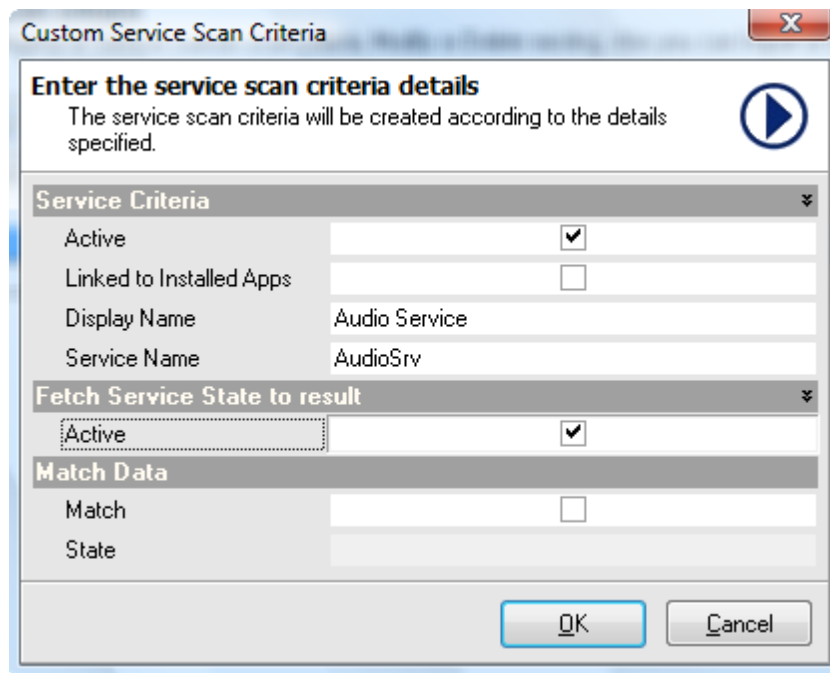
In this tutorial we will show you how to use custom scan criteria to get the version of Windows Media Player from the remote Machines.

### To do it let us perform the following steps:

1. Switch to Options tab.
2. Check Execute Custom Scan check box shown under Multi row Data node.

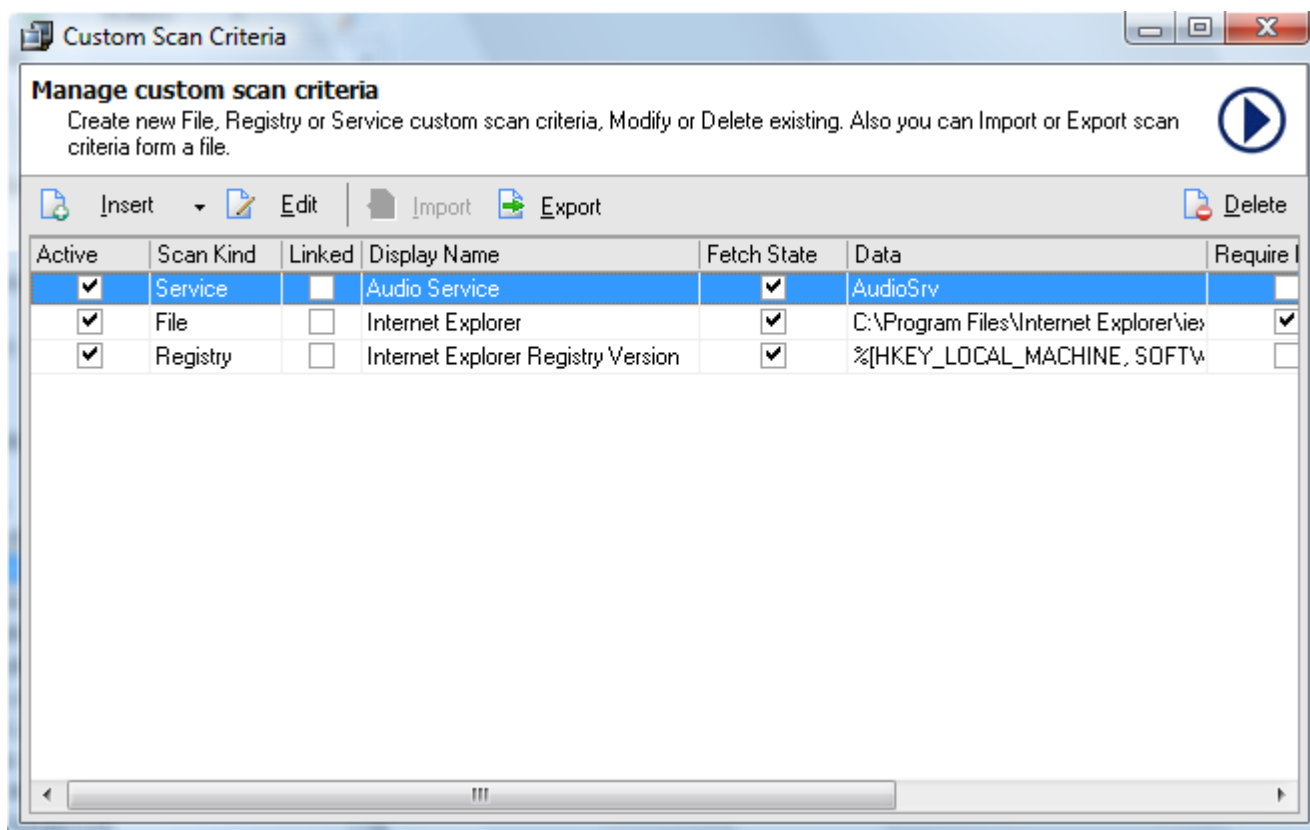


3. Switch back to Manage tab and select and select Custom Scan Criteria menu item show under Management menu.
4. Custom Scan Criteria dialog appears on the screen.
5. Click Insert and select File menu item form the pop-up menu.
6. Custom File Criteria dialog appears on the screen.
7. Check Active check box to make it active.
8. Type "Windows Media Player - Version" in the Display Name field.
9. EMCO Network Inventory allows you to fetch the version of tje specified file. Click the browse button located on the right of the File name field. Move to C:\Program Files\Windows Media Player and select mpvis.dll.
10. Check the Active check box under Fetch File Version to results.



11. Click Ok button.

12. The select Files scan will be added to the Custom Scan Criteria list.



13. Switch to the Manage tab.

14. Expand the Networking node shown under Machines management tab.

15. Expand the required Domain/Workgroup node.

16. Press the Ctrl key and select the required machines.

17. Click Update button from the toolbar.



18. Expand the Custom Results node shown in manage tab to see the machines matching your specified custom scan criteria.

19. Select a domain/workgroup to see available machines in it. You will see the currently installed version of Windows Media Player that EMCO Network Inventory has automatically fetched for you.